



RISHWORTH SCHOOL

**FINANCIAL STATEMENTS
FOR THE YEAR ENDED
31 JULY 2019**

**Charity registered number: 1115562
Registered Company number: 05855479 (England & Wales)**

CONTENTS

Legal and Administrative Information	2-3
Annual Report of the Governors	4-19
Parent Statement of Financial Activities	20
Consolidated Statement of Financial Activities	21
Parent Balance Sheet	22
Consolidated Balance Sheet	23
Consolidated Cash Flow Statement	24
Notes forming part of the Financial Statements	25-35
Independent Auditors' Report	36-38

RISHWORTH SCHOOL

Legal and Administrative Information

Reference and Administrative Information

Charity Name	Rishworth School
Charity Registration Number	1115562
Company Registration Number	05855479
Registered Office and Operational Address	Rishworth School Rishworth HX6 4QA
Operational address for Heathfield School	Heathfield School Rishworth HX6 4QF
Web Address	www.rishworth-school.co.uk

Governors

The Governing Body consists of not fewer than five and not more than twelve members (the Governors). New Governors are co-opted by existing Governors. The Governors have all served in office throughout the year, except where indicated.

Reverend Canon H Barber (Chair)
Mrs D M Whitaker (Vice Chair, until 26 March 2019)
Mr T M Wheelwright
Mrs J C Slim
Mrs F J Ellam (professional name Dr Woodhouse, joint Vice Chair from 26 March 2019)
Mrs M Garbett (joint Vice Chair from 26 March 2019)
Mr P J Hudson
Ms V Stevens (retired 26 March 2019)
Mr C Bell
Dr C A G Brooks (resigned 11 October 2018)
Mr BM Moore (appointed 1 July 2019)

Officers

Acting Head (until 6 January 2019)	Mr P Seery BSc, MEd
Head (from 6 January 2019)	Dr P Silverwood MA (Cantab), PhD, CChem
Deputy Head (and Head of Heathfield)	Mr A Wilkins MA, BA
Bursar, Clerk to the Governors and Company Secretary	Ms J Clague BA, FCA, CTA

RISHWORTH SCHOOL

Legal and Administrative Information

Bankers	Lloyds TSB Bank Plc 14/16 High Street Huddersfield West Yorkshire HX1 2LE
Solicitors	Schofield Sweeney Springfield House 76 Wellington Street Leeds West Yorkshire LS1 2AY Eaton Smith 14 High Street Huddersfield West Yorkshire HD1 2HA
Auditors	Sleigh & Story Ltd Chartered Certified Accountants and Statutory Auditors Thornhill Brigg Mills Thornhill Beck Lane Brighouse West Yorkshire HD6 4AH
Investment Advisors	Cardale Asset Management Limited 2 Greengate Cardale Park Harrogate HG3 1GY

RISHWORTH SCHOOL

Annual Report of the Governors for the year ended 31st July 2019

The Governors are pleased to present their Annual Report for the year ended 31st July 2019, together with the audited financial statements for the year. The Governors' report contains a group director's report relating to the company and the subsidiary. We confirm that the financial statements comply with the requirements of the Charities Act 2011, the Trust Deed, the Charities SORP (FRS 102) and the Companies Act 2006. The Governors have complied with the duty in Section 4 of the 2011 Charities Act to have due regard to guidance published by the Charity Commission, including public benefit guidance.

1. Accounting Period

The Company was incorporated on 22nd June 2006. Activity commenced through this Company on 1st August 2006, as explained below.

2. Reference and Administrative Details

The School was originally founded in 1724 and registered as a charity with the Charities Commission under a scheme dated 30 July 1928 and as amended by subsequent schemes made on 13 November 1953, 28 August 1968 and 26 July 2006. On 31 July 2006 the expendable assets of the Rishworth School Trust (529161) were transferred to Rishworth School, a company limited by guarantee (Company Number 05855479) and registered with the Charities Commission under Charity Number 1115562. Under a direction made by the Charities Commission on 26 July 2006, Rishworth School Trust and its remaining associated funds (Rishworth School Trust, The Stocks Prize, Gaukrodger Scholarship, The Mabel and Dorothy Fielding Scholarship and The Cockcroft and Wadsworth Scholarship) are to be treated as forming part of the company for the purposes of Part IV (registration) and Part VIII (accounting) of the Charities Act 2011. The Rishworth School Governors, executive officers and principal addresses of the Charity are as listed on page 2. Particulars of the Charity's professional advisers are given on page 3.

Rishworth School Trading Limited (06637465) is a wholly owned subsidiary of Rishworth School Limited (1115562). Their accounts for the year ended 31 July 2019 are consolidated into these financial statements. The principal activity of the Company during the period was the provision of sports facilities to the general public. Prior to the covenanted donation, the company made a profit of £38,513 for the year ended 31 July 2019. Forecasts for the year to 2020 show the company should continue to make a similar positive contribution to the School's reserves.

3. Structure, Governance and Management

Governing Document

Rishworth School, a company limited by guarantee, is governed by Memorandum and Articles of Association incorporated on 22 June 2006 and registered as a Charity on 25 July 2006. Rishworth School is the sole trustee of Rishworth School Trust which is governed by its Trust Deed constituted under a revised scheme made in 1928 (amended 1953, 1968 and 2006).

Structure of the Schools

Rishworth School provides education for pupils between the ages of 3 and 18 years. Pupils aged between 3 and 11 are educated at Heathfield, the Preparatory School to Rishworth School, (referred to as "Heathfield").

RISHWORTH SCHOOL

Annual Report of the Governors for the year ended 31st July 2019

3. Structure, Governance and Management (Continued)

Heathfield also incorporates a nursery for pupils aged between 3 and 4 years. The Senior School (referred to as "Rishworth") caters for pupils between the ages of 11 and 18.

Governing Body

The Charity is led by a Governing Body whose members are listed on Page 2 of this document.

Recruitment and Training of Governors

Our aim is to have and, as a vacancy arises, to recruit, responsible people who are actively interested in our charity and who can give the necessary time commitments. New Governors are inducted into the workings of the Charity, including board policy and procedures. On-going training is provided through external and internal training courses, through the observation of normal school operations and attendance at school events.

Organisational Management

Governors are appointed for a term of three years and are eligible for re-election at the end of that time. The Governors, who set the overall policy for the running of the School in consultation with the Head, hold board meetings usually four times a year. A Finance and General Purposes Committee (redesignated as the Business Committee from September 2019), which usually holds meetings a few weeks before each full board meeting, reports to the Board. The Business Committee is made up of six Governors, the Head, Deputy Head (Head of Heathfield) and Bursar. Specialist committees of Governors and school staff meet termly and comprise the Pastoral Committee, Education Committee and Development Committee. Other ad hoc committees are formed from time to time according to need to report to the full Board.

The Governors delegate the educational running and development of the School to the Head who does so in consultation with the Deputy Head (Head of Heathfield), Deputy Head (Academic), Deputy Head (Pastoral) and Bursar. The Bursar, in conjunction with the Head, is responsible to the Governors for the financial and non-academic administration of the School.

Risk Management

The Board of Governors is responsible for the management of the risks faced by the School. Risks have been identified and assessed. The assessment considered possible consequences, existing controls, severity and risk reduction. This is reviewed regularly.

Risk areas were identified under the following headings:

- Governance and management
- Pupil attraction and retention
- Finance
- Operations

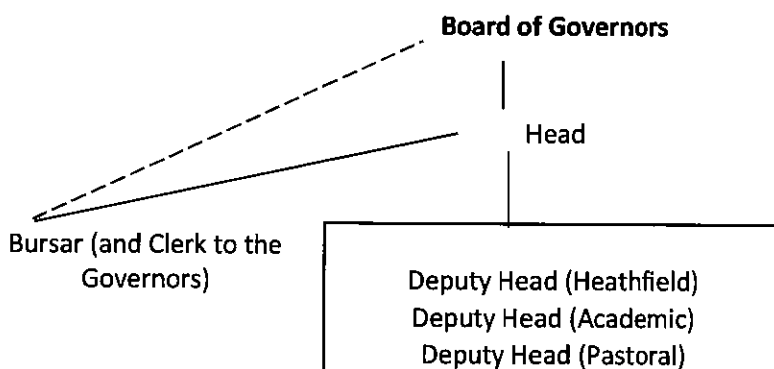
Through the risk management processes established for the School, the Governors are satisfied that the major risks identified have been adequately mitigated. It is recognised that systems can provide reasonable but not absolute assurance that major risks have been managed.

RISHWORTH SCHOOL

Annual Report of the Governors for the year ended 31st July 2019

3. Structure, Governance and Management (Continued)

Summary of the School - Organisational Chart (from 1 September 2019)*



Pay and Remuneration of Key Management Personnel

The review and setting of remuneration for key management personnel is undertaken annually by a committee of Governors which comprises the Chair and Vice Chair. Pay and remuneration is determined by reference to achievement of objectives and independent benchmarking data that is available for the sector.

4. Strategic Report; Objectives, Activities, Achievements and Performance

Charitable Objects

The objects of the Charity are to carry on a school or college or schools and colleges for the provision of education.

Aims and Intended Impact

Within these objectives the School aims to provide a first-class independent education, both through strong academic tuition, and through wider personal development. The School intends to provide an environment where each pupil can develop and gain the personal skills and confidence to achieve their potential.

A high level of individual attention combined with a broad curriculum and varied extra-curricular activities ensure that every student finds areas in which to contribute. The ethos of the School is to encourage pupils to develop a respect and understanding of the views and beliefs of others.

The Public Benefit

The School's objects (above) fall under the heading "advancement of education" (included within the Charities Act 2011 as part of a list of recognised charitable purposes). The trustees also have regard to the Charity Commission's guidance on public benefit.

RISHWORTH SCHOOL

Annual Report of the Governors for the year ended 31st July 2019

4. Strategic Report; Objectives, Activities, Achievements and Performance (Continued)

During the year the School educated 428 pupils. There is a clear national benefit to be gained from well-educated members of society and the maintenance of academic and social standards. A further, and perhaps more direct benefit, lies in the savings made to the taxpayer by educating pupils in the independent sector. The number of pupils we educate relieves pressure on local state schools with no claim on the State for the subsidy provided for each place at a maintained school. The money saved by the State can be used across all sectors of society to universal benefit. Added to this, the School is a major local employer; with 116 members of staff, many of whom live in the immediate vicinity of the School.

Rishworth's public benefit extends well beyond the classroom.

- Rishworth operates a means-tested bursary scheme to provide access to as wide a section of society as possible. The public's attention is drawn to the scheme via press advertisements, the school website and directly to all those who make admissions enquiries. The scheme awards bursaries for tuition fees according to need. In 2016 the scholarship programme was extended to include Choral Scholarships working alongside Halifax Minster.
- The Old Rishworthians Society has a Scholarship Fund that is used to support individuals who might otherwise not be able to benefit from a Rishworth education during their time at the School. The Old Rishworthians is an organisation that operates across the globe and organises a number of events that help generate funds re the above, in addition to a thriving Old Rishworthians Golf Club.
- During the year, academic departments provided local state schools' pupils with opportunities for subject-specific learning from our specialist staff using our facilities and also paying reciprocal visits to the primary schools' in question (English, Mathematics, Science, Food and Nutrition, Drama, History, Geography, DT, PE, Music, Computer Science and Modern Foreign Languages).
- Heathfield and Rishworth School hosted students from local schools on work placements and is delighted to have formed a formal partnership with Huddersfield University to provide ongoing student teacher placements.
- Heathfield and Rishworth School support a range of charities throughout the year, decided upon by the School Council and / or the Charities Council, with particular links developed with local charities such as Calderdale SmartMove and Overgate Hospice, in which senior pupils have gone on to participate and support independently. Other Heathfield and Rishworth charity events raised funds for The Royal British Legion, Children in Need, The Laura Crane Trust and 42nd Street, Endeavour, Comic Relief, Martin House, Sports Aid and Macmillan; all in all raising over £5,300 to support worthy causes. In the summer of 2019 students helped with charitable work in a remote community in The Sacred Valley.
- Rishworth Pupils have been actively involved in the local community over the past year in events such as the Christmas tree festival at Halifax Minster and Ripponden in Bloom. Members of the School also joined the local Act of Remembrance which includes a commemoration of the sacrifice of soldiers at various monuments as part of a communal walk through the local villages. A memorial was also created in Rishworth's own grounds, and ceremonies held at both sites.
- The School has agreed to support a local state primary school by assisting with temporary emergency accommodation should the need arise, as part of their critical incident planning.
- Three local swimming providers offer swimming lessons to children from the local community using the school's facilities.
- Heathfield acts as a hub for academically able groups from local primary schools.

RISHWORTH SCHOOL

Annual Report of the Governors for the year ended 31st July 2019

4. Strategic Report; Objectives, Activities, Achievements and Performance (Continued)

- Sports coaches from Rishworth are deployed in local schools as volunteer coaches in rugby and cricket to help with primary sports, supporting the Government's well-being programme, aimed at combatting obesity in children. Older students are able to take on Sports Leadership roles and coach others external to the school as part of their BTEC Sports studies.
- The badminton academy continues to grow in popularity and is open to both members of the local community and pupils. Via this the School has forged a performance pathway and talented students are performing at a regional level.
- The School works closely with many groups. There has been particular focus on this area in order that local organisations can access the Rishworth School facilities at a low cost. As a result there are now links with more than twenty five local organisations - Old Rishworthians RUFC, Sowerby Bridge Cricket Club, Stones Cricket Club, The Cricket Asylum, Rugby Tots, a Badminton Academy, Academy Divers and Barkisland Cricket Club to name but a few. The groups use the School's facilities for the direct educational benefit of local young people across all sectors of society. The facilities are also used by local primary schools and junior sports clubs and Rishworth is delighted to host local school swimming galas in the swimming pool. Rishworth has a strategy of keeping hire charges as low as possible for such groups in order to encourage local primary schools to also use this facility.
- The School has continued its week long Summer Activity Camp with the emphasis being on having fun and being active whilst being mindful of keeping the cost low so that it is accessible to as many as possible. This camp was open to all local primary schools and was well attended by local children. Wrap-around care is provided for children from 3 – 11 in designated Out-of-School-Care facilities.
- The School, via its Ford Rugby Academy, Cricket and Badminton pathways, has helped in the development of young players. Guest coaching is a feature, combined with specialist in-house coaching from specialists in different positional play. This is complemented by the Athletic Development Program which aims to maximise the athletic potential of the most talented athletes, with protocols designed by the Head of Human Performance for England Rugby League. The school offers to run tournaments for local primary schools and scholarships to pupils with talent and these combined with the bursary programme enables those with potential to access the programme without financial barriers.
- As a Trinity Examinations centre, the School hosts children from a range of local schools for examinations in music. Also in Speech and Drama; Communications and Acting in Pairs, when the school can also be an examination centre.
- Local primary schools visited Rishworth on numerous occasions during the academic year, for example experiencing plays and productions. Added to this, Rishworth also ran the highly popular Rishworth Experience Days in the summer term for local schools to participate in and accessed by over 200 children.
- Nursery children at Heathfield have continued their links with The Ark Nursery this year, and Year 4 continued an association with Bent's Farm Nursery. As well as welcoming new friends, building confidence and social skills, both sets of Nursery children have also thoroughly enjoyed the access to our facilities and the opportunity to play and learn together.
- In 2019 the School once again hosted the Calderdale Safer Recruitment training in our Performing Arts Centre and hopes to do so at regular intervals in future.
- Rishworth and Heathfield Schools are very proud of their active PTA's. As well as raising funds that enable the School to purchase facilities and equipment for the benefit of the pupils, the Committee is very active in making charitable donations.

RISHWORTH SCHOOL

Annual Report of the Governors for the year ended 31st July 2019

4. Strategic Report; Objectives, Activities, Achievements and Performance (Continued)

- Heathfield children once again joined the local community to celebrate the Harvest Festival in Halifax Minster. The choir sang and led a part of the service, children led prayers and made readings. Students from Rishworth decorated a Christmas tree at Halifax Minster as part of the community celebrations there.
- Rishworth is a lead school in the Network of Teaching Excellence in Computer Science. Inset training is provided by Rishworth staff for state school computer science teachers and in 2019 we were delighted to host regional school representatives at a STEAM conference.

Objectives for the Year and Strategies for their Achievement

This year the focus was:

1. Teaching and learning focus – assessment and learning in order to maximise pupils' progress

In addition to the GL Assessments previously carried out, we have also introduced CAT4 testing of cognitive ability, a group reading test and a pupil attitude to Learning Survey. Colleagues have been able to use all of this information to inform better judgements about children and how to tailor the academic programmes for individual strengths and weaknesses.

The ongoing commitment to pastoral care has seen further colleagues trained as Designated Safeguarding Leads and taking a part in safeguarding processes, and other colleagues across both sections of the school receiving training in mental health first aid, supplementing colleagues with previous training.

2. Teaching and learning focus – staff professional development including that of the senior team. Included within this area will be focus on the smooth transition to new Headship as Mr Seery approaches his retirement.

In January 2019 the School welcomed Dr Paul Silverwood who returns to his native Yorkshire having been the Headmaster of Queen Margaret's York, Hartland International School in the UAE and, most recently, Chase Grammar School with Chase International Study Centre in Staffordshire. He brings with him a wealth of experience of independent education across all age ranges, for boarders and day students, in the UK and overseas. Educated at QEGS Wakefield and the University of Cambridge, Paul has excellent academic qualifications and his broad interests in Current Affairs, the Arts, Sport and Technology demonstrate his belief in the benefits of an all-round education. Before becoming a teacher, Paul worked in the field of Scientific Research for BNFL, the MoD and ICI, receiving his PhD in Nuclear and Radiochemistry from the University of Manchester. He is a Chartered Chemist and has been an ISI Inspector, A-Level Examiner and Qualifications Adviser for Cambridge Assessment. He has spoken at international conferences on the theme of Values-based Education, an aspect of his approach to school leadership which stood out during his interviews with us.

The School community would like to thank Peter Seery, who delayed his retirement and was the Acting Head at Rishworth throughout 2018. His dedication and contribution to the school has been so important over many years.

The school has invested in more subject specialist inset training and training in specialist teaching and learning techniques coupled with wider personal development opportunities for teaching colleagues.

RISHWORTH SCHOOL

Annual Report of the Governors for the year ended 31st July 2019

4. Strategic Report; Objectives, Activities, Achievements and Performance (Continued)

3. Teaching and learning focus - continuation of the curriculum review process and putting recommendations into place.

The School continues to monitor its curriculum provision and to make adjustments where necessary to ensure that it meets the needs of its pupils and aligns with its statement of aims. At Heathfield, a curriculum review is undertaken annually and is, by virtue of staff meeting agendas, reviewed on a rolling basis.

4. Marketing focus – to include a review of priorities, examination of the efficacy of the website in attracting new custom, particularly in the overseas markets.

The school has now turned its focus to the development of its new website and this will be launched within the academic year 2019-2020. Sitting alongside this and as part of the #becausenothingmattersmore campaign we are also excited to reveal that the new school video will also be launched in the Lent Term 2020.

5. Marketing focus – recruitment and retention of pupils and the partnership with parents

All independent schools continue to face a very tough economic climate. We are focussed on both recruitment and retention of pupils and the partnership with parents. Whilst recognising the importance of attracting greater numbers of boarding pupils, it is also acknowledged that the School must continue in its efforts to attract and retain day pupils.

The School hugely values present parents and their valuable input. With this in mind, throughout the school there has been a focus on informational events organised on e-safety, child protection, Early Essence, reading, study skills – all aimed to tie in with areas of academic focus.

6. Governance – continued focus on succession planning within the Governing Body and recruitment of suitable Governors with skills as identified in the most recent skills audit.

The School has invited parents to submit an application should they feel that they have suitable skills to be considered by Governors to co-opt as a Governor.

Principal Activities of the Year

The School provides education in the Halifax area for boys and girls. Pupil numbers are still lower than previous levels due to prevailing economic conditions. The School had 428 (2018-460) pupils during the year of which 34 (2018-49) were boarders. The total number of pupils can be broken down to Rishworth 301 (2018-310) and Heathfield 127 (2018-150).

Grant-making Policy

This year, the net value of means-tested bursaries, scholarships, grants, prizes and other awards or remissions made to pupils was £603,282 (2018 £639,627). The Governors' policy, in line with that of other independent schools, is to make scholarship and bursary awards on the basis of the individual's educational potential and, wherever possible, to relieve hardship where the pupil's education and future prospects would otherwise be at risk. Where awards are made from an endowment, these may be subject to the particular conditions imposed by the original donor.

RISHWORTH SCHOOL

Annual Report of the Governors for the year ended 31st July 2019

4. Strategic Report; Objectives, Activities, Achievements and Performance (Continued)

Operational Performance of the School

2018/2019 was a very busy year for the School Community. There were countless achievements by the students themselves and significant investment in the School in terms of teaching and learning and continual development of the facilities offered to the pupils and the public. Just a flavour of the activities during the year include (for a more detailed list please call the School and request the annual "Rishworthian" magazine):

- A School Ball for both Schools organised by respective PTAs, a Sport's Dinner, and numerous House and Year Group Suppers. The School is very proud of the PTA groups and the way in which they are also working together and supporting one another on whole school fund raising and projects. Some brand new fund raising events have been introduced and the positive energy and drive of parents pushed the eco-classroom project as they focus on Forest School and outdoor spaces and opportunities for learning for the children. The PTAs have provided support to the school at Open Events, plays, school discos and in decorating the school chapel prior to events.
- Forest School plays a very important part at Heathfield enabling them to become more confident, learning and exploring whilst also having fun, but safely and sensibly.
- Heathfield children had the opportunity to experience trips and days out. Children widened their horizons by being able to choose from over 40 different clubs and activities outside of the academic lessons; ranging from chess to lego, photography and Warhammer, all interests are catered for! Older Heathfield children broadened their horizons with a trip with their class teacher to The Museum of Science and Industry in Manchester, Leeds Museum, the Amazon Fulfilment Centre, Jodrell Bank, PGL in Boreattan Park, the Robinwood Activity Centre at Dobroyd and Cornwall. Years 5 and 6 also had the opportunity to take part in Bikeability training; learning how to use their bikes safely on roads and how to be aware of other road users.
- Heathfield children decided to 'make a bit of a thing' of World Book Day and stretched their celebrations out to a whole week. They transformed the assembly hall with beautiful displays, organised a book fair and were able to drop in to the Book Café. The photography club meanwhile coordinated a portrait shoot of students in costume.
- The Student Council goes from strength to strength at Heathfield and their work included a Harvest collection for SmartMove accompanied by a visit to better understand the valuable work that they do. There were regular cake sales to raise money for the RNLI, road safety education and Comic Relief. They organised high viz vests for trips and walks out of school and set their minds to a playground development project to make best use of open spaces. Fundraising by other children went to support Macmillan Cancer Support, Overgate Hospice and The Pink Ribbon Foundation.
- There were numerous opportunities for performance from Heathfield children; children also took part in weekly music carousel lessons to allow them to play new musical instruments whilst also learning fundamental skills. Music and musical drama were showcased in our productions this year – from informal lunchtime concerts through to major plays and performances and we thank all of those staff who go above and beyond to make these events happen. Performances included the Foundation Stage and Reception Nativity, and KS1 told us the story of Christmas through the (many) eyes of aliens. There was the unforgettable Heathfield's Got Talent and Years 5 and 6 presented 'Orphan Day'. Added to this were many opportunities to visit the School Chapel, St Barts and Halifax Minster for special services and assemblies.

RISHWORTH SCHOOL

Annual Report of the Governors for the year ended 31st July 2019

4. Strategic Report; Objectives, Activities, Achievements and Performance (Continued)

- At Heathfield, music plays a pivotal role; the majority of KS2 children take one or more individual lessons in musical instruments, with children encouraged to take Trinity Music examinations. This year some of our musicians from years 4 to 6 have joined in rehearsals with older students. The Christmas concert at St Barts, the Music Festival held within school and Young Voices being experiences that the children will not forget.
- Where our Heathfield pupils took examinations, they excelled – the Trinity Speech and Drama examinations yielded an impressive 100% pass rate, ALL at Merit or Distinction. We are delighted to see more pupils than ever putting themselves forward for the tests.
- The Young Musician of the Year, which ran over both sites, was a wonderful opportunity to celebrate the children's hard work on their individual instruments and rewarding for the visiting Music Teachers to see the results of their dedicated teaching. Winners of individual categories went on to give an evening concert to determine overall winners of the 'Young Musician of the Year' title in different age groups.
- Both schools actively promote British Values. The values we promote are firmly embedded within PSHCE, during assemblies, and within our own institutions including School Councils, Intellectual Curiosity competitions, visits from professionals and throughout the curriculum.
- For Rishworth students, the Intellectual Curiosity programme encouraged independent research and this was embedded via the associated trips to London and Manchester. The "Make" evening allowed students to showcase their work of GCSE and A Level students from the Food and Nutrition, Art and Design and Design Technology departments. The Space team enjoyed 2 successful launches and the school held a highly successful day dedicated to Women in Science.
- Set up in 2000, the F1 in Schools competition provides a means to reach beyond the standard school syllabus to help develop Science, Technology, Engineering and Maths (STEM) skills as well as marketing and business skills. Initially the Centurion Racing team from Rishworth School became the first F1 in Schools team from West Yorkshire to reach the national finals of the competition. In the 2017-18 season, the team achieved the fastest overall race-time of the competition leading to the team being placed 2nd overall and them winning the "Innovative Thinking Award". In 2019 the team achieved the unthinkable and won a place at the World Finals taking place in Abu Dhabi. Teaching staff, parents and students in the team have dedicated huge amounts of time and effort into raising the necessary team funds and we wish them well in their next stage of world domination.
- Heathfield ran another 'Parents' Week' giving an opportunity for parents and carers to join lessons and find out what school is really like at Heathfield. We received very positive feedback from those who attended lessons and events. Children in the Foundation stage love their school dinners and so they invited their parents to join them for Parent Lunch Week!
- At Heathfield, the netball, football, rounders, swimming, cross country, and hockey teams had excellent seasons and played a wide range of competitive sports fixtures with other schools, both state and independent. Sports ran as curricular and extra-curricular activities.
- There were field trips for drama, history, geography and biology pupils as well as educational visits for art, ICT, science, maths and music pupils. There were also a number of cultural visits and pupils competed in the regional UK Mathematics Team Challenge. Year 10 scientists went to Science Live in Leeds and the Design and Technology department entered three teams for the annual Rotary Technology Tournament. The GCSE Geography group went out and about in and travelled to the fieldwork centre in Cranedale practicing skills towards some of the topics covered in class.

RISHWORTH SCHOOL

Annual Report of the Governors for the year ended 31st July 2019

4. Strategic Report; Objectives, Activities, Achievements and Performance (Continued)

- A group travelled to Salt Lake City in Utah, U.S.A. for skiing, and in July 2019 a group of 14 students embarked on a life changing volunteer and trekking project in Peru; developing their resilience and leadership skills in the process. There were also local educational visits to Liverpool as well as biology and geography field trips to Cranedale. Psychology students visited Buckley Hall Prison, 6th form scientists visited Huddersfield University to work in the chemistry labs there and Year 8 scientists visited metals engineering company Arconic. Sixth form students meanwhile undertook a two day residential teambuilding course in a local outdoor pursuits centre as part of their induction into the Lower Sixth and Food Science and Nutrition students visited a food manufacturers in Bradford.
- 2018/19 saw a high proportion of students embarking on the challenge of the Duke of Edinburgh's Award with six groups aiming to complete their Bronze Award and a further group embarking on their Gold Award. Due to popularity the school intends to enable students in Year 9 to access their Bronze award in future and to then explore widening the offering to also include Silver award thereafter.
- There were countless boarding trips and activities, including visits to the National Media Museum, Laser Quest, go karting, quad biking, Chill Factore, Christmas Markets, Malham Cove, Yorkshire Wildlife Park and Scarborough. Memorable events included 'Spooktacular' ghost walks, Christmas parties, Easter egg hunts, a Valentine's party and Boarders International Evenings in the dining hall as well as a Bake Off competition. Boarders really enjoyed visiting Heathfield School to talk to the children about subjects such as Chinese New Year, and students on short term stays from a wide variety of countries were an important addition to boarding life. The end of year House Supper was a chance to celebrate friendships and the end of the boarding year.
- Retired Governor Mr Edward Mitchell, was guest of honour at the School's prize giving in June 2019. At the Heathfield Prize-Giving, the guest of honour was Old Rishworthian Sophie Sismanovic.
- Rishworth School was very lucky to host a touring cricket side from Oman and short stay groups from overseas providing opportunities for students to understand and appreciate different cultures.
- It has been another incredibly busy year in the Music and Drama departments, with some wonderful performances taking place both in and outside of School. The major focus for the drama department in the year was given over to a production of "Straight on Till Morning", written by Mr Heap, the Head of Drama.
- Weekly Tuesday music assemblies featuring soloists, duets and ensembles continued to highlight the very best of our musical talent and Chapel Services were features of the School year. Many of our students are active in National and Regional championships. There were PAC recitals, an evening with the Funk Band, St Bartholomew's Christmas Concert, Carols by Candlelight in Chapel and the annual Music Festival where we welcomed Mr Don Gillthorpe to adjudicate. We are particularly proud that the Chapel Choir regularly comprised 30 students leading to some memorable services and also that under the leadership of the Director of Music, concerts increasingly involve students from both the Preparatory School and secondary age pupils; ably supported by a very loyal and dedicated team of visiting music professionals.

RISHWORTH SCHOOL

Annual Report of the Governors for the year ended 31st July 2019

4. Strategic Report; Objectives, Activities, Achievements and Performance (Continued)

The academic results for the year

Our pupils have a wide spectrum of academic aptitudes, yet we tend to fare better year on year at GCSE than any other non-selective school in the whole of our main day-school catchment area, which covers four Education Authorities and both sides of the Pennines (Calderdale, Kirklees, Oldham and Rochdale). The quality of the grades at the top end has been most pleasing. Top end pupils get top end grades that often exceed those achieved in more selective schools. Those with less academic ability tend to consistently out-perform in attainment by a whole grade or more. Indeed, pupils do very well across the whole School in terms of 'value added'. GCSE success tends to follow through to A-level, where a 100% pass has been the norm and the highest-performing students gain nothing but A grades. Students tend to go on to Russell group and other top universities including, amongst others, Oxford, Edinburgh, Durham, Loughborough, Aston, Nottingham and York in the UK, and prestigious universities abroad.

Examination Results 2019

GCSE Results – August 2019

We are delighted that students at Rishworth School performed extremely well in the most recent GCSE exams;

- 90% of all grades were 9 – 4 (or A* - C)
- 85% of pupils attained 5 or more 9 – 4 (or A* - C) Grades
- 33% of the students gained grades at 9 – 7 (or A* - A)

We are deeply proud of the achievements of our students in this year's GCSE examinations particularly as there has been so much uncertainty around the changes to the qualification. Our students have worked extremely hard and have remained focused on what they have needed to do in order to give of their best.

At Rishworth we have – and are committed to having - not only academically-gifted students but also a wide spectrum of aptitudes, including some pupils who are singularly disadvantaged – for example by not having English as their first, or even their second, language. This makes our results all the more pleasing and the pupils and the staff deserving of praise. These examination results represent a huge amount of dedication and hard work and the governors would like to thank our hugely talented and committed staff for everything that they have done to support our students.

A Level Results – August 2019

Students at Rishworth School have performed extremely well in the 2019 A-level exams and secured places at outstanding universities and courses including law, psychology, physics, modern foreign languages, chemistry and international business management both within the UK and abroad. Rishworth students have again performed well above the national benchmark and achieved another strong pass rate.

- 23% A*-A
- 51% A*-B
- 66% A*-C

RISHWORTH SCHOOL

Annual Report of the Governors for the year ended 31st July 2019

4. Strategic Report; Objectives, Activities, Achievements and Performance (Continued)

- 84% A*-D
- The top students achieved their string of A*-A grades
- The 2019 student cohort took up places at top Russell group and international universities in Hong Kong and Germany as well as earning places at leading conservatoires.

However good the statistics are, what we really care about – and what we believe parents and pupils really care about, is how each pupil fares relative to his or her own potential. And that is where Rishworth truly excels.

Key Stage 1 and 2 results 2019

Children at Heathfield are encouraged to experience public examinations in a range of activities in order to bolster confidence and to give some important experience in dealing with such examinations. Speech and drama is an important part of the English curriculum, and children are able to take Trinity examinations in related subjects: Communications, Acting and Acting in Pairs. Every other year, the Year 5 and 6 production is also entered at a high level as a group performance. In the academic year, there were two separate examination periods, in February and in June, with children from Years 4 – 6 taking the aforementioned examined components at Grades Initial to 2, depending on their previous levels of attainment. The work arose naturally out of the English syllabus. There was 100% pass rate, all at either Merit or Distinction, with the vast majority of pupils gaining a Distinction.

Music is at the heart of the School. There are specialist teachers delivering lessons to small groups, and to individuals, in a large number of musical disciplines: trumpet, trombone, euphonium, piano, keyboards, violin, viola, 'cello, double bass, clarinet, flute, guitar (both classical and electric), and percussion. Children taking individual music lessons are encouraged to take Trinity Music Graded examinations. In the past academic year, children have taken examinations in six different disciplines, from grades Initial to 5, with a 100% pass rate, the majority at Distinction, and with the marks averaging a Distinction overall.

Nationally standardised GL assessments yielded results above national average in every assessed area and in every year group, with excellent rates of progress in every cohort.

Pupil Achievements

- Students obtained their Bronze and Gold Duke of Edinburgh awards.
- A team of pupils worked within the Formula 1 in School project to design and build a racing car, gaining sponsorship, and qualifying for the World Finals in Abu Dhabi.
- Pupils in Years 7, 8 and 9 from the Cricket Academy attended coaching sessions run by Cricket Asylum Head Coach Matthew Dawson.
- Due to the commitment of teaching colleagues there has been a huge range of co-curricular activities over the course of the year: both parts of the school have run very successful photography clubs; Bake-Off has returned for Junior pupils; in the senior part of the School, activities range from MFL support to Rock School, and from Piano duet Club to the Rishworth Space programme!
- One young student at Heathfield was a regular contributor to articles in the First Newspaper an award winning national, weekly newspaper aimed at 7-14 year olds.

RISHWORTH SCHOOL

Annual Report of the Governors for the year ended 31st July 2019

4. Strategic Report; Objectives, Activities, Achievements and Performance (Continued)

- Two students played at the Royal Albert Hall with Musica Youth Jazz
- One student successfully auditioned to join the National Children's Orchestra of Great Britain and another student performed in a new premiere by James MacMillan alongside the London Symphony Orchestra
- Two students received placements in the BrassInConcert national competition whilst at the Halifax Rotary Competition four students received prizewinning places and one student won the accolade of most promising student
- Two students won the British Open Youth Brass Band Championships playing with Elland Silver Youth Band and one student competed in the regional finals of the Great Britain and Ireland Rotary Competition
- Pupils achieved representative honours in a wide range of sports as detailed below:
 1. Heathfield had 3 representatives at the Calderdale cross country finals and the same children then represented the school at a regional level.
 2. One student has been selected to represent Pentathlon GB at the Under 17s European Championships in Lithuania.
 3. In trampolining, one student won the English Championships this season and attended the World Championships in Russia with the GB U16 squad. The student was also successful in securing Squadkit funding scholarship as a result of her achievements.
 4. In fencing, one student is a member of the U13 England team.
 5. One pupil was selected to play for Sale Sharks Academy U16.
 6. Six pupils were selected for the West Yorkshire, U13, U14, U15 and U17 Hockey squads. One student is a member of the U15 North Hockey Junior Regional Performance Centre.
 7. One pupil plays in the Manchester Thunder Academy U17.
 8. Students were selected to represent Yorkshire in cricket at U15 and one student played for the U15 Pakistan Cricket team.
 9. In Badminton, a pupil represents Yorkshire at U16 and trains with the Rishworth School Badminton Academy.
 10. A pupil qualified for the Pentathlon World Talent Programme.
 11. In rugby, five students played for Yorkshire Carnegie U16 and U18; five students participated in West Yorkshire Rugby Development Performance Programme U13 and U14. One pupil received a Warrington Wolves Rugby League scholarship U16; another joined England Lions Rugby League and Halifax RLFC U19.
 12. A student qualified for the North East swimming team with another representing Yorkshire.
 13. One pupil represented qualified for the U25 British Young Riders Dressage Scheme.

Building and Refurbishment Programme

During the year £65,464 was spent on property and grounds improvements. These improvements affect directly the experience of Rishworth pupils and the Board is keen to ensure that such targeted investment continues. During 2018/2019 the School continued with the on-going investment in replacement of roofing, windows and central heating systems whilst ICT spend in the period was focussed on ICT networking and upgrade of server projects.

RISHWORTH SCHOOL

Annual Report of the Governors for the year ended 31st July 2019

4. Strategic Report; Objectives, Activities, Achievements and Performance (Continued)

The School gratefully received donations during the year and these contributions towards bursary funds support those families who find themselves in difficult financial circumstances. Whilst the donors may wish to remain anonymous, we thank them for their very generous gestures.

5. Strategic Report; Financial Review and Results for the Year

School fees remain the primary source of funding. The largest single item of expenditure is on staff salaries which are required to provide the requisite high quality of teaching and pastoral care to fulfil the charitable aims and for which the School is known. In the current economic climate the Governors were expecting the School's financial performance to dip. Prudent management of the finances in the past has put the School in a very strong position to weather the current world financial climate. Continued focus on overseas marketing trips has been approved for 2019/2020 with the role being a full time focus for a staff member focussed on increasing footfall at international events in order to redress the decline in boarding numbers that occurred over the last 7 years.

Going Concern

As a result of continued focus on cost control and moves towards a more efficient staffing model the net outgoing resources relating to school activities for the year amounted to an accounting deficit of £176,563 (2018 deficit £360,857) which while not sustainable in the long term, was significantly lower than originally budgeted. Movements in the market value of the School's portfolio of investments resulted in an unrealised gain of £13,564 (2018 loss £(12,341)). There was a net cash inflow from operating activities of £37,722 (2018 outflow £(89,572)).

Whilst these results were better than forecast, the resulting Covid-19 pandemic has meant significant changes to the way the school operates. The school followed government advice to shut its doors, from 20 March 2020 onwards, to all students other than those whose parents are classed as 'key workers.' For students instructed to stay at home, the school is continuing to provide education through lessons delivered remotely. The impact of the pandemic on the economy as a whole is expected to be severe. The government has issued, and continues to issue, guidance and initiatives to support businesses through this situation. However, at this time it is not clear what the financial implications will be for the school. This, therefore, presents the school with a material uncertainty with regards to going concern.

Reserves Policy

In order to continue to fulfil Rishworth School's charitable objectives, the Governors recognise the desirability of cash reserves to fund both unforeseen fluctuations in income or outgoings and major development projects. The Governors aim to balance the need for cash reserves against the expenditure required continually to respond to staffing needs and to upgrade the school premises, many of which are buildings of historic interest. The retention of current pupils and recruitment of future students is dependent on the employment of the best staff available, attention to the facilities and fabric of the buildings and the creation of new facilities. In order to maintain the necessary balance, it is the policy of the School to ensure sufficient funds exist to satisfy the requirements above. Currently the reserves are lower than required for the School's longer-term capital-investment plans and our aim is to increase reserves once the short-term operational requirements have been satisfied. The current target is to reach £2million in unrestricted working capital net of long-term liabilities. As a result of sustaining losses in the last few years, total funds held by the charity at the end of the reporting period had reduced to £4,370,617

RISHWORTH SCHOOL

Annual Report of the Governors for the year ended 31st July 2019

5. Strategic Report; Financial Review and Results for the Year (continued)

and the School is actively restructuring to reverse this trend and improve business performance via efficiencies in operating rather than upward pressure on fees. The amount of any fund that can only be realised by disposing of tangible fixed assets or investments is detailed at note 14 and amounts to £4,497,940.

Investment Policy and Objectives

The day to day management of the investments has been delegated to Cardale Asset Management Limited who have been instructed to adopt a moderate-risk policy. The portfolio is invested in a mixture of gilts and equities so as to preserve capital value in real terms and to provide a gross yield of at least 3%. This financial year, we are pleased to report that the capital has been increased despite a year-on-year fall in stock market indices although income generated is at a rate of 1.9% on capital. Although below the target figure of 3% this is considered reasonable considering the improvement of the capital position and current interest yields.

6. Strategic Report; Future Plans

The year 2018/19 ended with the following main focus areas for the future:

- Teaching and learning focus – To raise standards and results and to ensure that students are meeting challenging targets, inform teaching, personalise learning and involve parents in progress checks.
- Teaching and learning focus – To raise the profile and emphasise the importance of the all-round education by formalising the Impact of Enrichment and Extension activities, clubs and trips.
- Education focus – To fully establish ourselves as a single entity, providing a through-school approach to the education for children aged 3-19.
- Development focus – To provide a modern, fresh and competitive shop window for the school's student (and staff) recruitment. To also modernise our approach to advertising and social media engagement.
- Pastoral focus – To clearly set out, promote and deliver an Independent boarding school ethos, with benefits for all students (boarding and day).
- Pastoral focus - To champion mental health awareness in the School and to improve the quality of tutorial time as a means of supporting students.

RISHWORTH SCHOOL

Annual Report of the Governors for the year ended 31st July 2019

7. Responsibilities of the Governors

Company Law requires the Governors as Trustees of the Charity to prepare accounts for each financial year which give a true and fair view of the Charity's financial activities during the year and of its financial position at the end of the year.

In preparing the accounts the Governors should follow best practice, and:

- select suitable accounting policies and apply them consistently;
- make judgements and estimates that are reasonable and prudent;
- follow applicable accounting standards and the Charity SORP, disclosed and explained in the accounts; prepare the accounts on the 'going concern' basis unless it is inappropriate to assume that the Charity will continue in operation;
- Company law requires that they must not approve the financial statements unless they are satisfied that they give a true and fair view of the state of affairs of the charity and of the surplus or deficit of the charity for that period.

The Governors are responsible for maintaining proper accounting records which disclose with reasonable accuracy at any time the financial position of the Charity and to enable them to ensure that the financial statements comply with the Companies Act 2006. The Governors are responsible for preparing the director's report and the financial statements in accordance with United Kingdom Generally Accepted Accounting Practice. They are also responsible for safeguarding the assets of the Charity, and hence for taking reasonable steps for the prevention and detection of fraud and other irregularities and are also responsible for the maintenance and integrity of the financial information included on the Charity's website.

Governors, who are Directors for the purpose of Company Law and Trustees for the purpose of Charity Law, who served during the year and up to the date of this report, are set out on Page 2.

In accordance with Company Law, as the Company's Directors, we certify that:

- so far as we are aware, there is no relevant audit information of which the Company's Auditors are unaware; and
- we have taken all the steps that we ought to have taken in order to make ourselves aware of any relevant audit information and to establish that the Charity's Auditors are aware of that information.

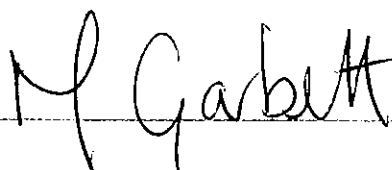
Auditors

Sleigh & Story were appointed as the Charity's Auditors and have expressed their willingness to continue in that capacity.

Approved and authorised by the Board of Governors on 30 March 2020 and signed on its behalf by:

MAXINE GARBETT
VICE CHAIR

~~Revd Canon H Barber~~ (Chair)



RISHWORTH SCHOOL

Statement of Financial Activities (Including Income & Expenditure Account) for the year ended 31st July 2019

	Notes	Unrestricted Funds School £	Endowed Funds School £	Restricted Funds Scholarship £	Total 2019 £	Total 2018 £
INCOME AND ENDOWMENTS FROM						
Charitable activities						
Fees receivable	2	4,989,994	-	-	4,989,994	5,161,357
Other educational income	3	6,505	-	-	6,505	8,178
Other ancillary income		142,484	-	-	142,484	111,931
Investments	4	-	17,293	7,584	24,877	19,599
Earned from other activities						
Bank and other interest		6,478	-	-	6,478	29,033
Donation from subsidiary		38,513	-	-	38,513	30,682
Total incoming resources		5,183,974	17,293	7,584	5,208,851	5,360,780
RESOURCES EXPENDED						
Raising funds						
Investment management		-	6,477	2,840	9,317	9,335
Charitable activities						
Teaching costs		3,237,370	-	-	3,237,370	3,531,604
Welfare		532,051	-	-	532,051	572,849
Premises		909,561	-	-	909,561	976,701
Grants and scholarships		-	-	4,744	4,744	3,300
Administration and support		692,371	-	-	692,371	627,848
Total resources expended	5/6	5,371,353	6,477	7,584	5,385,414	5,721,637
NET INCOME / (EXPENDITURE) BEFORE TRANSFERS						
		(187,379)	10,816	-	(176,563)	(360,857)
Transfers between funds	7	1,942	(1,942)	-	-	-
NET OPERATING SURPLUS / (DEFICIT)		(185,437)	8,874	-	(176,563)	(360,857)
Net Gains / (losses) on investments	8	-	16,132	4,915	21,047	28,596
Net Income / (expenditure)		(185,437)	25,006	4,915	(155,516)	(332,261)
Reconciliation of funds						
Total funds brought forward		2,986,049	1,021,814	518,270	4,526,133	4,858,394
TOTAL FUNDS CARRIED FORWARD		2,800,612	1,046,820	523,185	4,370,617	4,526,133

The statement of financial activities includes all gains and losses in the year. All incoming resources derive from continuing activities.

RISHWORTH SCHOOL

Consolidated Statement of Financial Activities (including Income & Expenditure Account) for the year ended 31 July 2019

	Notes	Unrestricted Funds School £	Endowed Funds School £	Restricted Funds Scholarship £	Total 2019 £	Total 2018 £
INCOME AND ENDOWMENTS FROM						
Charitable activities						
Fees receivable	2	4,989,994	-	-	4,989,994	5,161,357
Other educational income	3	6,505	-	-	6,505	8,178
Other ancillary income		142,484	-	-	142,484	111,931
Investments	4	-	17,293	7,584	24,877	19,599
Earned from other activities						
Bank and other interest		6,494	-	-	6,494	29,041
Trading income		39,817	-	-	39,817	32,888
Total Incoming resources		5,185,294	17,293	7,584	5,210,171	5,362,994
RESOURCES EXPENDED						
Cost of Raising funds						
Investment management		-	6,477	2,840	9,317	9,335
Trading administration and support costs		-	-	-	-	894
Trading legal and professional fees		1,320	-	-	1,320	1,320
Charitable activities						
Teaching costs		3,237,370	-	-	3,237,370	3,531,604
Welfare		532,051	-	-	532,051	572,849
Premises		909,561	-	-	909,561	976,701
Grants and scholarships		-	-	4,744	4,744	3,300
Administration and support		692,371	-	-	692,371	627,848
Total resources expended	5/6	5,372,673	6,477	7,584	5,386,734	5,723,851
NET INCOME / (EXPENDITURE) BEFORE TRANSFERS		(187,379)	10,816	-	(176,563)	(360,857)
Transfers between funds	7	1,942	(1,942)	-	-	-
NET OPERATING SURPLUS / (DEFICIT)		(185,437)	8,874	-	(176,563)	(360,857)
Net Gains / (losses) on Investments	8	-	16,132	4,915	21,047	28,596
Net Income / (expenditure)		(185,437)	25,006	4,915	(155,516)	(332,261)
Reconciliation of funds						
Total Funds brought forward		2,986,049	1,021,814	518,270	4,526,133	4,858,394
TOTAL FUNDS CARRIED FORWARD		2,800,612	1,046,820	523,185	4,370,617	4,526,133

The statement of financial activities includes all gains and losses in the year. All incoming resources derive from continuing activities.

RISHWORTH SCHOOL

Balance Sheet as at 31st July 2019

	Notes	2019	2018
		£	£
FIXED ASSETS			
Tangible assets	9	3,181,751	3,394,543
Investments	10	1,316,189	1,293,836
		<u>4,497,940</u>	<u>4,688,379</u>
CURRENT ASSETS			
Debtors and accrued income	11	207,651	221,776
Cash at bank and in hand		850,143	805,300
		<u>1,057,794</u>	<u>1,027,076</u>
LIABILITIES			
Creditors due within one year	12	(823,407)	(869,192)
NET CURRENT ASSETS		<u>234,387</u>	<u>157,884</u>
TOTAL ASSETS LESS CURRENT LIABILITIES		<u>4,732,327</u>	<u>4,846,263</u>
CREDITORS			
Due after more than one year	12	(361,710)	(320,130)
TOTAL NET ASSETS		<u>4,370,617</u>	<u>4,526,133</u>
THE FUNDS OF THE CHARITY			
Unrestricted funds		2,800,612	2,986,049
Endowment funds		1,046,820	1,021,814
Restricted income funds (designated and general)		523,185	518,270
TOTAL FUNDS	14	<u>4,370,617</u>	<u>4,526,133</u>

Authorised and approved by the Board of Governors on 30 March 2020 and signed on behalf of the Board by:

~~Revd Canon H Barber (Chair)~~

MAXINE GARBETT
VICE CHAIR

M Garbett

RISHWORTH SCHOOL

Consolidated Balance Sheet as at 31st July 2019

	Notes	2019	2018
		£	£
FIXED ASSETS			
Tangible assets	9	3,181,751	3,394,543
Investments	10	1,316,189	1,293,836
		<u>4,497,940</u>	<u>4,688,379</u>
CURRENT ASSETS			
Debtors and accrued Income	11	170,440	191,094
Cash at bank and In hand		888,674	837,302
		<u>1,059,114</u>	<u>1,028,396</u>
LIABILITIES			
Creditors due within one year	12	(824,727)	(870,512)
NET CURRENT ASSETS		<u>234,387</u>	<u>157,884</u>
TOTAL ASSETS LESS CURRENT LIABILITIES		<u>4,732,327</u>	<u>4,846,263</u>
CREDITORS			
Due after more than one year	12	(361,710)	(320,130)
TOTAL NET ASSETS		<u>4,370,617</u>	<u>4,526,133</u>
THE FUNDS OF THE CHARITY			
Unrestricted funds		2,800,612	2,986,049
Endowment funds		1,046,820	1,021,814
Restricted income funds (Designated and general)		523,185	518,270
TOTAL FUNDS	14	<u>4,370,617</u>	<u>4,526,133</u>

Authorised and approved by the Board of Governors on 30 March 2020 and signed on behalf of the Board by:

~~Revd Canon H Barber (Chair)~~

MAXINE GARRETT
VICE CHAIR

M Garbett

RISHWORTH SCHOOL

Consolidated Cash Flow Statement for the year ended 31st July 2019

	Notes	£	2019 £	£	2018 £
NET CASH INFLOW FROM OPERATING ACTIVITIES	17		37,722		(89,572)
RETURNS ON INVESTMENTS AND SERVICING OF FINANCE					
Investment income		24,877		19,599	
Interest receivable		<u>6,494</u>		<u>29,041</u>	
NET CASH INFLOW FROM RETURNS ON INVESTMENTS AND SERVICING OF FINANCE			31,371		48,640
CAPITAL EXPENDITURE AND FINANCIAL INVESTMENTS					
Purchase of tangible fixed assets		(135,450)		(92,414)	
Purchase of investments		(321,314)		(439,858)	
Proceeds from sale of fixed assets		6,646		-	
Proceeds from sale of investments		<u>432,397</u>		<u>371,840</u>	
NET CASH OUTFLOW FROM INVESTING ACTIVITIES			(17,721)		(160,432)
INCREASE / (DECREASE) IN CASH AND CASH EQUIVALENTS	18		<u>51,372</u>		<u>(201,364)</u>

RISHWORTH SCHOOL

Notes to the Financial Statements for the year ended 31st July 2019

1. Accounting Policies

Basis of Accounting

The financial statements are prepared on historical cost convention except that:

- Land and buildings are included at their 1934 valuation, adjusted by the cost of additions and disposals since that date. This valuation has been adopted as the historical cost under the transitional provisions of the Financial Reporting Standard 15. Where property owned before 1934 has been sold, the cost is assumed to be immaterial and the entire proceeds credited to the Foundation's capital account.

- Investments are included at market value as at 31 July 2019.

The financial statements have been prepared in accordance with applicable accounting standards; Financial Reporting Standard 102, The Charities Statement of Recommended Practice (FRS102), the Companies Act 2006 and where applicable, the Charities Act 2011.

In accordance with the requirements of the Statement of Recommended Practice the School's scholarship funds are incorporated into the Statement of Financial Activities and the Balance Sheet as restricted funds.

The School is a public benefit entity. The opening fund balances and reserves of the School are classified according to the assets held for each purpose as follows:

Endowment funds	Properties forming part of the original endowment together with investments purchased out of endowment capital.
Restricted funds	Investments and monies donated for scholarships and prizes, to the extent that they have not already been distributed for their intended purpose.
Unrestricted funds	Accumulated surpluses, principally represented by the property, equipment and working capital of the School.

Going concern

As a result of the Covid-19 pandemic, the school has followed government advice to shut its doors, from 20 March 2020 onwards, to all students other than those whose parents are classed as 'key workers.' For students instructed to stay at home, the school is continuing to provide education through lessons delivered remotely. The impact of the pandemic on the economy as a whole is expected to be severe. The government has issued, and continues to issue, guidance and initiatives to support businesses through this situation. However, at this time it is not clear what the financial implications will be for the school. This, therefore, presents the school with a material uncertainty with regards to going concern.

Revenue recognition, Fees and Similar Income

Fees receivable and charges for services and for the use of premises are accounted for in the year in which the service is provided. Fees receivable are stated after deducting allowances, scholarships and bursaries awarded by the School. Scholarships are provided in the same year as the service. Where scholarships are provided by restricted scholarship funds the fee income is shown gross in the School's accounts and the scholarships are shown as a deduction from the fund account. Fees received in advance of education, to be provided in future years, are held as liabilities until either taken to income in the term when used or else refunded.

RISHWORTH SCHOOL

Notes to the Financial Statements for the year ended 31st July 2019

Resources Expended and support cost apportionment to activity

Resources expended are accounted for on an accruals basis and has been classified under headings that aggregate all costs related to the category. Where costs cannot be directly attributed to particular headings they have been allocated to activities on a basis consistent with the use of the resources. Costs in relation to operating leases are charged to the income and expenditure account on a straight line basis over the lease term. Governance costs comprise the costs of running the charity, including strategic planning for its future development, audit and legal advice for the Governors and all other costs of complying with constitutional and statutory requirements. Governance costs include audit fees and an allowance for the costs of support staff serving governors' meetings.

Value Added Tax

Any irrecoverable VAT is charged to the Statement of Financial Activities, or capitalised as part of the cost of the related asset, as is appropriate.

Donations

Donations are credited to revenue on a receivable basis. Donations receivable for the general purposes of the charity are credited to unrestricted funds. Donations for purposes restricted by the wishes of the donor are taken into restricted funds where these wishes are legally binding on the Governors.

Pension Schemes

Retirement benefits to the employees of the School are provided by the Teachers' Pension Defined Benefits Scheme, for teaching staff, at rates set by the Scheme Actuary and advised to the Board by the Scheme Administrator and Flexiplan Number 1 (Capita) for non-teaching staff. These schemes are multi-employer pension schemes and it is not possible to identify the assets and liabilities of the scheme which are accounted for as a defined contribution scheme. The employer's contributions to both schemes are charged in the Statement of Financial Activities as they become payable and are shown as pension costs in note 5.

Tangible Fixed Assets

Depreciation is provided at the following rates:

Freehold buildings	1% - 2% of cost
Property improvements/refurbishment	6% - 15% of cost
Furniture and equipment	15% - 25% of cost
Computer equipment	15% - 25% of cost

The Governors have carried out an impairment review and have extended the period of depreciation from 10 to 15 years for long term projects. They believe the total net realisable value of fixed assets to be in excess of the carrying value at 31 July 2019. They believe the freehold buildings to have an estimated useful life in excess of 100 years. A valuation was carried out in 2019 which accorded an estimated value of £40,400,000 for insurance purposes. The indexed sum insured is £49,250,000 for insurance purposes. Foundation property, which comprises land and listed buildings, is not depreciated; any depreciation chargeable would not be material.

RISHWORTH SCHOOL

Notes to the Financial Statements for the year ended 31st July 2019

Investments

Investments are valued in the Balance Sheet at their mid-market value at the Balance Sheet date. Realised and unrealised changes in the market value of investments are dealt with in the Statement of Financial Activities. Investment income is accounted for in the year in which the Charity is entitled to receipt. Investment income management costs are charged as expenditure out of relevant funds.

Recognition of creditors and liabilities

Liabilities are recognised when an obligation arises to transfer economic benefits as a result of past transactions or events.

Group Accounts

These financial statements consolidate the results of the charity and its wholly owned subsidiary on a line by line basis.

RISHWORTH SCHOOL

Notes to the Financial Statements for the year ended 31st July 2019

2. Fees Receivable

School Fee income comprises:	2019	2018
	£	£
Gross Fees	5,588,532	5,797,684
Less: Total bursaries, grants and allowances	(603,282)	(639,627)
Add back: Scholarships, grants etc. paid for by restricted funds	4,744	3,300
	<u>4,989,994</u>	<u>5,161,357</u>

Included within fee income is £44,855 (2018: £72,795) of Early Years Education Funding including £109 (2018: £nil) Deprivation Supplement and £2,465 (2018: £4,034) Quality Supplement that is classified as restricted income. All of this restricted income was spent on qualifying restricted expenses in the period.

3. Other Educational Income

	2019	2018
	£	£
Other educational income		
Entrance and registration fees	6,505	8,178
	<u>6,505</u>	<u>8,178</u>

4. Investments

	2019	2018
	£	£
Listed investments	19,976	13,617
Common Investment funds	4,901	5,982
	<u>24,877</u>	<u>19,599</u>

Investment income comprises of income from investment units held in the UK and the listed investments are quoted on the London Stock Exchange.

RISHWORTH SCHOOL

Notes to the Financial Statements for the year ended 31st July 2019

5. Total Resources Expended

	2019	Parent	2019	Consolidated
	£	2018	£	2018
		£		£
Charitable activity expenditure includes:				
Premises repairs	119,736	92,023	119,736	92,023
Depreciation	348,243	369,758	348,243	369,758
Governance expenditure Includes:				
Auditors remuneration	7,350	7,350	7,350	7,350
Governors' liability insurance	4,037	3,970	4,037	3,970
Total staff costs comprising				
Wages and salaries	3,274,070	3,540,923	3,274,070	3,540,923
Social security costs	297,749	326,752	297,749	326,752
Pension contributions	328,435	289,302	328,435	289,302
	3,900,254	4,156,977	3,900,254	4,156,977

The average number of full-time equivalent employees was 100 (2018: 102) of whom 60 (2018: 63) were teaching staff.

The number of employees whose emoluments (excluding pension contributions) exceeded £60,000 (on an annual basis) was:

	2019	2018
£90,000 - £100,000	-	1
£80,000 - £90,000	-	1
£70,000 - £80,000	2	1
£60,000 - £70,000	1	1

The number of employees whose emoluments exceeded £60,000 and who were accruing pension benefits under the two schemes were:

	No	2019	No	2018
		£		£
Teachers' pension scheme	2	25,298	3	38,778
School scheme support staff	1	8,868	1	8,730
	3	34,166	4	47,508

The total value of key management personnel compensation during the year was £304,715 (2018: £379,450). Key management personnel comprise senior management staff as noted on page two.

RISHWORTH SCHOOL

Notes to the Financial Statements for the year ended 31st July 2019

6. Analysis of Total Resources Expended

PARENT	Staff costs £	Other £	Depreciation £	Total £
Charitable activities				
Teaching costs	2,941,007	236,915	59,449	3,237,371
Welfare	340,135	191,916	-	532,051
Premises	219,245	401,521	288,794	909,560
Administration of the school	402,890	289,481	-	692,371
Support costs of schooling	3,903,277	1,119,833	348,243	5,371,353
Grants, awards and prizes	-	4,744	-	4,744
Cost of Raising funds				
Investment management	-	9,317	-	9,317
Total resources expended	3,903,277	1,133,894	348,243	5,385,414

CONSOLIDATION	Staff costs £	Other £	Depreciation £	Total £
Charitable activities				
Teaching costs	2,941,007	236,915	59,449	3,237,371
Welfare	340,135	191,916	-	532,051
Premises	219,245	401,521	288,794	909,560
Administration of the school	402,890	289,481	-	692,371
Support costs of schooling	3,903,277	1,119,833	348,243	5,371,353
Grants, awards and prizes	-	4,744	-	4,744
Cost of Raising funds				
Investment management	-	9,317	-	9,317
Trading costs	-	1,320	-	1,320
Total resources expended	3,903,277	1,135,214	348,243	5,386,734

7. Transfer Between Funds

	£
Net income from endowments	11,604
Loan replacement fund	(9,662)
	<u>1,942</u>

8. Net Gains / (Losses) on Investments

	£
Realised	7,483
Unrealised	13,564
	<u>21,047</u>
	=====

RISHWORTH SCHOOL

Notes to the Financial Statements for the year ended 31st July 2019

9. Tangible Fixed Assets (Parent & Consolidated)

	<u>Freehold foundation property</u>	<u>Freehold school buildings</u>	<u>Property improvement/ refurbishment</u>	<u>Furniture and equipment</u>	<u>Computer Equipment</u>	<u>Total</u>
	£	£	£	£	£	£
Cost						
At 1 st August 2018	20,956	2,316,694	4,563,784	1,065,317	1,272,036	9,238,787
Additions	-	-	65,464	10,537	59,449	135,450
Disposals	-	-	-	(41,552)	-	(41,552)
As at 31st July 2019	20,956	2,316,694	4,629,248	1,034,302	1,331,485	9,332,685
Depreciation						
At 1 st August 2018	-	567,482	3,082,823	992,327	1,201,611	5,844,243
Charge for the year	-	23,167	247,872	26,357	50,847	348,243
Eliminated on disposals	-	-	-	(41,552)	-	(41,552)
As at 31st July 2019	-	590,649	3,330,695	977,132	1,252,458	6,150,934
Net Book Value						
As at 31st July 2019	20,956	1,726,045	1,298,553	57,170	79,027	3,181,751
As at 31 st July 2018	20,956	1,749,212	1,480,961	72,989	70,425	3,394,543

10. Investments

	<u>Unrestricted</u>	<u>Restricted</u>	<u>Endowment</u>	<u>Total</u>
	£	£	£	£
Balance as at 1 st August 2018	-	458,776	835,060	1,293,836
Additions	-	122,255	199,059	321,314
Disposals at opening market value	-	(166,914)	(258,001)	(424,915)
Change in market value	-	2,803	10,761	13,564
Increase/Decrease in cash	-	43,752	68,638	112,390
Balance as 31st July 2019	-	460,672	855,517	1,316,189
Comprising:				
Listed Investments	-	398,170	611,605	1,009,775
Common Investment funds	-	-	162,437	162,437
Cash awaiting investments	-	62,502	81,475	143,977
	-	460,672	855,517	1,316,189

All above investments are held in the UK, and are held as nominee by Cardale Stockbrokers Limited. All investments are held primarily to provide an investment return for the charity and to fund scholarships and bursaries.

The following investments were worth more than 5% of the portfolio value at 31st July 2019:
COIF Charity Funds – 9,738.89 units £162,437 (2018: 9,738.89 units £150,669).

RISHWORTH SCHOOL

Notes to the Financial Statements for the year ended 31st July 2019

Subsidiary undertaking:

Rishworth School owns Rishworth School Trading Limited (Company no. 06637465), a company limited by guarantee. The subsidiary's main trading activity is the letting of facilities owned by Rishworth School. At 31st July 2019 the subsidiary had current assets of £39,833 (2018: £32,002) and current liabilities of £39,833 (2018: £32,002). The results of the trading subsidiary are included in the consolidated results on pages 21 and 23. The principle address of the trading subsidiary is the same as Rishworth School as detailed at page 2. The company traded as follows:

	2019	2018
	£	£
Turnover	39,817	32,888
Cost of Sales	-	-
Administration Costs	(1,320)	(2,214)
Interest receivable	16	8
Covenanted donation to Rishworth school	(38,513)	(30,682)
Net Profit/(Loss) for the Year	-	-

11. Debtors and accrued income

	2019	Parent	2019	Consolidated
	£	2018	£	2018
		£		£
Fees	13,436	29,526	14,738	29,526
Other debtors	5,429	3,967	5,429	3,967
Rishworth School Trading Ltd	38,513	30,682	-	-
Prepayments and accrued income	150,273	157,601	150,273	157,601
	207,651	221,776	170,440	191,094

12. Creditors

	2019	Parent	2019	Consolidated
	£	2018	£	2018
		£		£
Amounts falling due within one year				
Fees received in advance (note 13)	384,258	505,679	384,258	505,679
Trade creditors	107,448	71,078	107,448	71,078
Taxation and social security	116,267	138,538	116,267	138,538
Final term deposits	18,300	29,250	18,300	29,250
Accruals and deferred income	197,134	124,647	198,454	125,967
	823,407	869,192	824,727	870,512
Amounts falling due after more than one year				
Final term deposits	361,710	320,130	361,710	320,130
	361,710	320,130	361,710	320,130

RISHWORTH SCHOOL

Notes to the Financial Statements for the year ended 31st July 2019

Final term deposits:

Fees in advance, include fees paid in full for the following academic year and future charges. Final term deposits are paid when a pupil registers to join the School and are held until the pupil's last term when they are released against fees and other charges.

13. Fees Received In Advance

	2019	2018
	£	£
Within 1 year	249,852	335,083
Within 1 to 2 years	26,070	25,765
Within 2 to 5 years	80,078	84,366
Over 5 years	28,258	60,465
	384,258	505,679

The balance brought forward on fees received in advance at the start of the year was £505,679 (2018: £415,495). £335,083 (2018: £232,201) of this income was released during the year. Amounts deferred in the year totalled £213,662 (2018: £322,385). These amounts are expected to be released in the periods as shown above.

14. Allocation of Net Assets

Parent	Fixed assets	Investments	Net current assets/(liabilities)	Long term liabilities	Total
	£	£	£	£	£
Unrestricted funds	3,160,795	-	1,527	(361,710)	2,800,612
Endowment funds	20,956	855,517	170,347	-	1,046,820
Restricted funds	-	460,672	62,513	-	523,185
	3,181,751	1,316,189	234,387	(361,710)	4,370,617

Consolidated	Fixed assets	Investments	Net current assets/(liabilities)	Long term liabilities	Total
	£	£	£	£	£
Unrestricted funds	3,160,795	-	1,527	(361,710)	2,800,612
Endowment funds	20,956	855,517	170,347	-	1,046,820
Restricted funds	-	460,672	62,513	-	523,185
	3,181,751	1,316,189	234,387	(361,710)	4,370,617

RISHWORTH SCHOOL

Notes to the Financial Statements for the year ended 31st July 2019

15. Commitments

At the year-end there were no capital commitments, authorised or contracted for (2018: £nil).

Other financial commitments

Operating lease commitments

	Parent		Consolidated	
	2019	2018	2019	2018
	£	£	£	£
Due in under one year	6,115	6,115	6,115	6,115
Due in one to two years	6,625	6,115	6,625	6,115
Due in two to five years	-	6,625	-	6,625
Total operating lease commitments not provided in the financial statements	12,740	18,855	12,740	18,855

Total expenditure incurred under operating lease contracts during the year was £6,115 (2018: £6,115).

16. Pension Schemes

Teachers' Pension Scheme (TPS, 'the scheme'):

The School participates in the Teachers' Pension Scheme (England and Wales) ("the Scheme"), for its teaching staff. This is an unfunded multi-employer defined benefits pension scheme and it is not possible or appropriate to identify the assets and liabilities of the Scheme which are attributable to the School.

The scheme is an unfunded defined benefit pension scheme where contributions payable are credited to the Exchequer and a notional set of investments maintained. The pension cost is assessed every five years by the Government Actuary. The contributions payable by the School during the accounting period were equal to 16.4% of pensionable salaries. The pensions charge recorded by the School during the accounting period was equal to the contributions payable.

Federated Flexiplan No 1 ('the plan'):

A buyout update was issued with regards to Federated Flexiplan No 1 ("the plan") during the year ended 31 July 2018. The update advised that the full buy-out of the plan had now been completed and Aviva assumed full responsibility for each member's benefits due from the Plan under the member's policy.

The Company's liability as an employer in respect of the Plan has now been discharged to the effect that no further contributions will be required from the Company or any other employer.

Group Personal Pension Plan:

Rishworth School operates a Group Personal Pension Plan for all its employees who are not eligible to join the Teachers' Pension Scheme. All new and existing non-teaching staff will be automatically enrolled into this pension plan although staff are able to opt out of this should they wish. The scheme is a defined

RISHWORTH SCHOOL

Notes to the Financial Statements for the year ended 31st July 2019

contribution pension scheme. As a result, the amount charged to the income and expenditure account represents the Company's contributions payable to the Plan in respect of the accounting period.

17. Reconciliation of Net Incoming Resources to Net Cash Flow from Operations

	2019 £	2018 £
Surplus / (Deficit)	(176,563)	(360,857)
Depreciation charged	348,243	369,758
Profit on sale	(6,646)	-
Investment income (net)	(24,877)	(19,599)
Bank deposit Interest	(6,494)	(29,041)
Decrease / (increase) in debtors	20,654	74,745
(Decrease) / Increase in creditors	(4,205)	(191,368)
Decrease / (increase) in cash awaiting investment	(112,390)	66,790
NET CASH INFLOW FROM OPERATING ACTIVITIES	37,722	(89,572)

18. Analysis of Changes in Cash and Cash Equivalents

	Bank Accounts £	Total £
Balances at 31 st July 2017	1,038,666	1,038,666
Net cash inflow (outflow)	(201,364)	(201,364)
Balance at 31 st July 2018	837,302	837,302
Net cash Inflow/(outflow)	51,372	51,372
Balance at 31 st July 2019	888,674	888,674

19. Related Party Transactions

Expenses have been reimbursed to Governors. The total amount paid in the year was £305 (2018: £ Nil). No Governor received remuneration or has received any other benefits from the charity.

Mrs R Silverwood, spouse of the head Mr P Silverwood, was employed by the school from 29 April 2019, in a temporary role as director of international marketing and admissions. During the year Mrs Silverwood received salary amounting to £12,925 (2018: £Nil) in respect of carrying out the prescribed role.

RISHWORTH SCHOOL

Independent Auditors' Report to the Members of Rishworth School

Opinion

We have audited the consolidated financial statements of Rishworth School (the "Charity") for the year ended 31 July 2019 which comprise the Consolidated Statement of Financial Activities (including the income and expenditure account), the Consolidated Balance Sheet, the Consolidated Cash Flow Statement and notes to the financial statements, including a summary of significant accounting policies. The financial reporting framework that has been applied in their preparation is applicable law and United Kingdom Accounting Standards, including Financial Reporting Standard 102: The Financial Reporting Standard applicable in the UK and Republic of Ireland (United Kingdom Generally Accepted Accounting Practice).

In our opinion, the consolidated financial statements:

- give a true and fair view of the state of the Charity's and group's affairs as at 31 July 2019 and of its incoming resources and application of resources for the year then ended;
- have been properly prepared in accordance with United Kingdom Generally Accepted Accounting Practice;
- have been prepared in accordance with the requirements of the Companies Act 2006.

Basis for opinion

We conducted our audit in accordance with International Standards on Auditing (UK) (ISAs (UK)) and applicable law. Our responsibilities under those standards are further described in the Auditor's responsibilities for the audit of the financial statements section of our report. We are independent of the Charity in accordance with the ethical requirements that are relevant to our audit of the financial statements in the UK, including the FRC's Ethical Standard and we have fulfilled our other ethical responsibilities in accordance with these requirements. We believe that the audit evidence we have obtained is sufficient and appropriate to provide a basis for our opinion.

Material uncertainty related to going concern

We draw attention to the going concern note, within the accounting policies on page 25, which explains the issues the Charity is facing as a result of the Covid-19 pandemic. The school has followed government advice to shut its doors, from 20 March 2020 onwards, to all students other than those whose parents are classed as 'key workers.' For students instructed to stay at home, the school is continuing to provide education through lessons delivered remotely. The impact of the pandemic on the economy as a whole is expected to be severe. The government has issued, and continues to issue, guidance and initiatives to support businesses through this situation. However, at this time it is not clear what the financial implications will be for the school. As stated in the going concern note, within the accounting policies on page 25, these events indicate that a material uncertainty exists that may cast significant doubt on the Charity's ability to continue as a going concern. Our opinion is not modified in respect of this matter.

Other information

The trustees are responsible for the other information. The other information comprises the information included in the annual report other than the financial statements and our auditor's report thereon. Our opinion on the financial statements does not cover the other information and, except to the extent otherwise explicitly stated in our report, we do not express any form of assurance conclusion thereon.

In connection with our audit of the financial statements, our responsibility is to read the other information and, in doing so, consider whether the other information is materially inconsistent with the financial statements or our knowledge obtained in the audit or otherwise appears to be materially misstated. If we

RISHWORTH SCHOOL

Independent Auditors' Report to the Members of Rishworth School

Identify such material inconsistencies or apparent material misstatements, we are required to determine whether there is a material misstatement in the financial statements or a material misstatement of the other information. If, based on the work we have performed, we conclude that there is a material misstatement of this other information, we are required to report that fact.

We have nothing to report in this regard.

Opinions on other matters prescribed by the Companies Act 2006

In our opinion, based on the work undertaken in the course of the audit:

- the information given in the annual report of the governors (incorporating the strategic report and the directors' report) for the financial year for which the financial statements are prepared is consistent with the financial statements; and
- the annual report of the governors (incorporating the strategic report and the directors' report) have been prepared in accordance with applicable legal requirements.

Matters on which we are required to report by exception

In the light of the knowledge and understanding of the Charity and its environment obtained in the course of the audit, we have not identified material misstatements in the annual report of the governors including the Strategic Report.

We have nothing to report in respect of the following matters in relation to which the Companies Act 2006 requires us to report to you if, in our opinion:

- adequate accounting records have not been kept or returns adequate for our audit have not been received from branches not visited by us;
- the financial statements are not in agreement with the accounting records and returns;
- certain disclosures of governors' remuneration specified by law are not made; or
- we have not obtained all the information and explanations necessary for the purposes of our audit.

Responsibilities of the governors

As explained more fully in the governors' responsibilities statement set out on page 19, the governors are responsible for the preparation of the financial statements and for being satisfied that they give a true and fair view, and for such internal control as they determine is necessary to enable the preparation of financial statements that are free from material misstatement, whether due to fraud or error.

In preparing the financial statements, the trustees are responsible for assessing the Charity's ability to continue as a going concern, disclosing, as applicable, matters related to going concern and using the going concern basis of accounting unless the governors either intend to liquidate the Charity or to cease operations, or have no realistic alternative but to do so.

Our responsibilities for the audit of the financial statements

Our objectives are to obtain reasonable assurance about whether the financial statements as a whole are free from material misstatement, whether due to fraud or error, and to issue an auditor's report that includes our opinion. Reasonable assurance is a high level of assurance, but is not a guarantee that an audit conducted in accordance with ISAs (UK) will always detect a material misstatement when it exists.

RISHWORTH SCHOOL

Independent Auditors' Report to the Members of Rishworth School

Misstatements can arise from fraud or error and are considered material if, individually or in the aggregate, they could reasonably be expected to influence the economic decisions of users taken on the basis of these financial statements.

A further description of our responsibilities for the audit of the financial statements is located on the Financial Reporting Council's website at: [www.frc.org.uk/auditorsresponsibilities]. This description forms part of our auditor's report.

Use of our report

This report is made solely to the Charity's members, as a body, in accordance with Chapter 3 of Part 16 of the Companies Act 2006. Our audit work has been undertaken so that we might state to the Charity's members those matters we are required to state to them in an auditor's report and for no other purpose. To the fullest extent permitted by law, we do not accept or assume responsibility to anyone other than the Charity's members as a body, for our audit work, for this report, or for the opinions we have formed.



Peter Philip John Sleight FCCA (Senior Statutory Auditor)

For and on behalf of Sleight & Story Ltd
Chartered Certified Accountants and Statutory Auditors
Thornhill Brigg Mills
Thornhill Beck Lane
Brighouse
West Yorkshire
HD6 4AH

20/21 2020