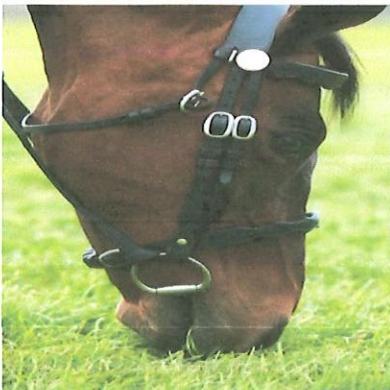
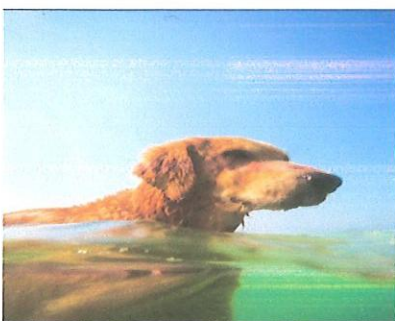




RSPCA

Kent North West Branch

Registered Charity 210633



ANNUAL REPORT

for

THE YEAR ENDED

31st DECEMBER 2019

CONTENTS

BRANCH INFORMATION	Page 3
SUMMARY OF BRANCH STATISTICS	Page 4
ANNUAL REPORT OF THE BRANCH COMMITTEE	Page 5
ANNUAL FINANCIAL REPORT OF THE BRANCH TRUSTEES.	Page 11
BRANCH ANNUAL ACCOUNTS AND BALANCE SHEET	Page 21
INDEPENDENT EXAMINERS REPORT ON THE BRANCH ACCOUNTS.	Page 37
BRANCH STATEMENT OF PUBLIC BENEFITS.	Page 39
CHIEF INSPECTOR NICK WHEELHOUSE SE 6 KENTGROUP, ANNUAL REPORT.	Page 43
CHIEF INSPECTOR MARK MILES, SE GROUP 3, S.E.LONDON, ANNUAL REPORT	Page 47

ROYAL SOCIETY FOR THE PREVENTION OF CRUELTY TO ANIMALS

KENT NORTH WEST BRANCH

(Registered Charity 210633)

Branch Officers and Trustees during 2019

Branch President:	Mrs. E.M.Grover (ex officio)
Branch Vice President:	Mrs. H. Kingston (to 20th August 2019)
Branch Chairman:	Mr. E.J.Grover
Branch Vice Chairman:	Mrs. J.R.Allen
Branch Secretary:	Ms. C.A. Campbell
Branch Treasurer:	Miss N.Dunton A.C.A.
Branch Animal Welfare Administrator:	Mr. J.A.Bowley
Branch Membership Secretary	Mrs. J.R Allen
Branch Committee Members:	Mr.B.Charman (from(24/1/18)
	Miss L.Cheary (to 31st May 2019)
	Mr K.P..Coleman, MA; FCMI. (to26th June 2019)
	Mr. T. Maddison.
	Mr. A.J.McDermott.
	Miss. K.Ward.
Bankers:	Nat West Bank Plc
	12, High Street,
	DARTFORD DA1 1DD
Branch Clinic & Admin Centre:	37, Gordon Road,
	DARTFORD DA1 2LG

Note: Correspondence to; Branch Officers and Trustees can be addressed to the Branch Admin Centre

Branch Helpline **01322 286720**

Branch Shops:	2/3 Market Place,	161, Windmill Street,
	DARTFORD	GRAVESEND
	Kent DA1 1EX	Kent DA12 1AH
Shop Managers	Mr Brendan Woodbridge	Mrs Val Oakman

Branch Website: www.rspca-kentnorthwest.org.uk

RSPCA KENT NORTH WEST BRANCH

SUMMARY OF ANIMAL WELFARE ACHIEVEMENTS 2016-2019

Animals In Branch Care at beginning of year	2019	2018	2017	2016
Dogs	2	0	1	0
Cats	5	1	5	2
Rabbits	0	0	0	0
Others	0	0	0	2
TOTAL	7	1	6	4

Animals coming into Branch Care during year

Dogs	12	23	10	27
Cats	157	150	126	177
Rabbits	0	2	14	9
Others	48	9	19	27
TOTAL	217	184	169	240

Animals leaving Branch Care during year

	Rehomed	Transferred	Other				
Dogs	0	10	3	13	18	11	23
Cats	12	101	8	121	115	131	145
Rabbits	0	0	0	0	2	14	9
Others	1	45	0	46	9	19	29
TOTAL				180	144	175	206

Animals PTS on Vets Advice during year

Dogs	2	3	3	3
Cats	28	31	31	29
Rabbits	0	0	0	0
Others	0	0	0	0
TOTAL	30	34	34	32

Branch Service Activity in Year

	<u>Microchipped</u>	<u>Neutered</u>	<u>Clinic attendances</u>				
Dogs	1	7	0	8	11	73	157
Cats	44	58	1	103	150	180	341
Rabbits	0	0	0	0	2	2	0
Others	0	0	0	0	0	3	3
TOTALS	45	65	1	111	163	258	501

Welfare Vouchers issued in year

Dogs	11	12	4	3
Cats	11	13	1	5
Rabbits	3	12	0	0

RSPCA, KENT NORTH WEST BRANCH
(Registered Charity 210633)

Annual Report of the Branch Committee, presented by Eric Grover, Branch Chairman, for the year ending 31st December 2019.

1. I have much pleasure in presenting the report of the Branch Committee on their work and activities during the past year for a year that proved to be a highly active time for the Branch.
2. During the year, the Branch Trustees met on regular bi-monthly basis. In a year that proved to be very busy in the field of Animal Welfare the Branch is proud to present a report on an active year which proved to be most successful both physically and financially, although tinged with some sadness.

3. The Branch Trustees were saddened the news in August that the Branch President, Edna Grover was admitted to Hospital and diagnosed with a condition named Dysphagia. On August 22nd 2019, Edna was discharged to her home on palliative care with the assistance of carers attention on four occasions in the day. Although not in the period of the coverage of this report it is sad that I have to advise members that Edna passed away on 31st January 2020. Edna's contribution to the Branch activities will be greatly missed. She undertook voluntary roles in most of the Branch's activities, she had been a member of the RSPCA for over 50 years and had a great love for all animals. In her younger years, her home was never without a companion cat or two. In 2018 Edna, along with husband Eric was awarded the RSPCA's most prestigious award The Queen Victoria Gold Award. Edna will be greatly missed by all who knew her, and the Trustees condolences go to Edna's family and relations

4. It was also in August that the Trustees received further sad news of the passing of the Branch Vice President, Mrs Helen Kingston at the age of 96. Helen had been the lynch pin of activity in the Gravesend part of the Branch. In her younger days she was the Clinic Alimony and ran a small Charity Shop at 158, Parrock Street Gravesend, before we opened the shop in Windmill Street and at time provided vital funding for the Branch. The condolences of the Trustees are extended to all who have lost loved ones during the year.

5. The Branch Committee continues to seek to recruit new Trustees to administer the policies and activities of the Branch to grow in strength and experience. The AGM of the Branch was held at the Dartford Golf Club in June at which time Mr Keith Coleman relinquished his role as a Trustee and the Branch were pleased that Miss Correen Campbell and Miss Natalie Dunton agree to continue their respective roles as Branch Secretary and Branch Treasurer respectively.

The Branch Trustees agreed to continue its recruitment drive to encourage members of the Society to become Trustees and at the same time to co-opt Trustees to fill the vacancies that had or were likely to occur during 2020 and beyond.

6. Members will recall that in June 2018 the Charity Commission issued a Certificate of Incorporation to the Trustees of the Branch which allows them to enter into contracts and hold property in the name of the Trustees for the time being of the Branch, rather than in the names of individual Trustees.
7. At a National level, Mr Chris. Sherwood was appointed to the role of CEO with effect from 1st August 2018. During the year, the National Society carried out a review of Governance and held a consultation on the structure of the Board of Trustees inviting comments on the reduction of the Board from 25 to 12. After the consultation, a resolution was carried accepting the reduction and the setting up of a Branch Affairs Committee. The National Society Mission Statement contains a Vision of a world where all animals are respected and treated with compassion.
The Branch continues to take its part in the activities of the South East Regional area of the Southern Region and regularly attends the Regional Board Meetings which is made up of all Branches within the South East of the Region.
8. The Branch continued to receive valuable support from our Branch Support Specialist, and we are grateful that Becky Blackmore is always ready to offer us assistance and guidance on a day to day basis whenever we need it. During the year, the Branch reviewed many of its policy documents under the watchful eye of Becky. Without Becky's valuable assistance many of the Branch initiatives such as the Staffordshire Bull Terrier Neutering Scheme; the subsidised neutering scheme for cats at the Shrubbery Veterinary Clinic; and the Female Cat Neutering Project, operated in partnership with the Cats Protection, would probably have not been taken forward. With the cessation of the Weekly Clinic at the Shrubbery, it remains an objective of the Trustees to provide Clinic Facilities at a local Veterinary Surgery to provide service to the public.
9. During the early part of the year the construction of the Branch Equine Rehoming Centre was completed except for the Exercise Ring which was due to be completed by the end of 2019. Sad to report that the Exercise Ring remained to be installed by the End of the year. We remain hopeful that the work will be completed early in 2020. A report of the project from Becca Williams is attached to this report. Becky Blackmore was instrumental in setting up the initial introductions and negotiations.
10. Our two shops continue to produce results that enable the Branch to undertake our key role in Animal Welfare within our large Branch area and it is of little doubt that we could not make that contribution without the revenue that the shops continue to produce on a regular basis. Unfortunately, during

2019 Income from both continued on a downward trend. Details of the Shops activities are reported in a Memorandum Trading account which is included in but not part of the Branch Annual Financial Report. It will be noted that one of the significant items in the report is that of rent at the shops. The Branch had the foresight to purchase the freehold of the property at Gravesend and therefore no rent is paid. At the Dartford shop the Branch has had to contend with a higher rent because in 2010 the Branch took the opportunity to expand into a second unit. This move at the time bore fruit but in recent years has seen the surplus of the Dartford Shop decline. On the Branch Shop Staffing front, the Branch Trustees are pleased that Mrs Valerie Oakman is the full-time Manager of the Gravesend Shop, ably supported by Mrs Dawn Broad, the part time assistant manager and a team of hardworking volunteers.

At the Dartford Shop, Mr Brendan Woodbridge continued to be the full time Shop Manager in a permanent capacity from 1st January 2018. Mrs Hillarie Jones resigned her post as a Deputy Manager in August. The Branch agreed to appoint a New Deputy Manager post with addition hours to enable the Branch to undertake additional sales on the internet via E-Bay. It is unfortunate that the addition sales were not forthcoming.

Mr Woodbridge is ably supported by the Deputy Shop Managers, Mrs Joan Burgess and Mrs Norma Harber. They continued to work on an ad-hoc basis being available to be called upon as required. The Backbone of every Charity must be the voluntary support that it receives. The Branch is truly fortunate to have a wonderful team of volunteers who work hard to ensure that the Branch is successful in all that it achieves. The Trustees very much appreciate the work of all the Volunteers, without which the Branch could not succeed in the field of Animal Welfare in our large Branch area. During the year, the Branch adopted a policy document on the use of volunteers.

11. The Branch continues to support the Staffie Neutering Scheme and has committed funds to it but the demand has been reducing over recent years. The Branch received a further sum of £2,500.00 in 2013 of matched funding to support the initiative and part of this sum has continued to be rolled over into 2019. During the year, the take up of the Scheme was extremely low and the Branch treated only 2 cases. This does however bring the total of Staffies treated to date to a total of 246 against the original unofficial target that the Branch set of 100.

The service is also extended to Local Authority Stray Animals at a number set at 2 animals per month. The Scheme remains open to use by members of the Public. At the end of the year the balance on the "Staffie" Neutering Fund remained at £1575 and this sum will be available as we move into 2020

12. The weekly Branch Clinic, which was established in 2012, sadly had to be suspended in 2018 due to the lack of Veterinary cover for the clinic. Some existing cases are treated at the Clinic, but no new cases can be accepted. The Clinic operated at the Shrubbery Veterinary Centre and the Centre regret that they have not been able to reintroduce the weekly Clinic. The Branch Trustees have been keen to reintroduce a Clinic service and are

seeking a Veterinary Practice to work in partnership with and will continue the search in 2020.

13. The Branch Trustees advocate a policy for the microchipping of all domestic animals and will offer assistance with the cost in cases of financial hardship. All animals that come into the Branch's care and are rehomed via one of the three catteries that the branch deals with, are micro-chipped before being rehomed. Members of the public will still be advised of the benefits of micro-chipping.
14. The Female Cat Neutering Project, which the Branch pioneered during 2015 with the cooperation of Cats Protection and a number of Veterinary Surgeons, continued to be available during 2019 although at the sole cost of the Branch. The partnership with the Cats Protection ceased at 31 December 2018 with an agreement on both sides that we would be prepared to cooperate with similar projects in the future.

At the end of 2019, following the Trustees agreement that the project should be retained, a further 17 Cats had been treated. This brought the total to 237 female cats spayed under the project. The Trustees were pleased that they have been involved in what was a tremendously successful exercise, meeting a much-needed service, unique in the field of animal welfare. Full details of the costings of the project can be found in the notes to the Branch Accounts.

15. The Branch has again, this year, enjoyed a very close working relationship with the Inspectorate in our area. Inspectors attend our meeting as and when their duties permit. Chief Inspectors Steve Dockery & Chief Inspector Nick Wheelhouse and their team of Inspectors are regularly in our large Branch area, providing a most effective service for which we are truly grateful. Details of the Inspectorate activities are contained in the body of the Annual Report, with Annual Reports from both Chief Inspectors.
16. The Branch has continued to seek to improve its fund-raising activities and although the Branch continued without the services of a Fund-Raising Co-ordinator, the Branch has been very active in this area.

The Branch owns properties at Miskin Road Dartford, Gordon Road Dartford, and Parrock Street Gravesend (Flat & Shop). The leasing of these properties produces a substantial rental income for the Branch on a regular basis.

The Branch continues to seek new sources of income generation. The placements of collecting boxes in several of the Co-operatives largest Stores within the Branch area has proved to be most successful. The Branch is grateful to all the Co-operative Managers for their cooperation in the placement of the boxes. The Branch Trustees are also extremely grateful that Joan Burgess continues to collect and bank the proceeds of the collecting boxes on behalf of the Branch.

17. The Branch Committee make every effort to ensure that any cat or dog that comes into our care is found a comfortable temporary home, receives veterinary care and is neutered and micro-chipped before it is considered for re-homing. The Branch has continued with the arrangements for the placement of cats at the Ashford Cattery, Bluebell Ridge, Hastings, and the Canterbury & Dover Branch Cattery. At all these catteries the Branch receives part of any rehoming fee for any cat that has been placed in the cattery for more than one month. It proved to be another busy year for the number of cats that came into our care. Arrangements were also made with the Lodge Cattery & Kennels to accept cats and dogs that came into our care and could not be cared for at one of the RSPCA Catteries.

18. The Branch website remains;

www.rspca-kentnorthwest.org.uk

Arrangements have been made for all contacts to be forwarded to Branch Officers to be dealt with. It is estimated that during the year the website dealt with some 500 calls and responses. In addition to the website the public have a Branch Helpline by which members may contact the various services of the Branch.

19. John Bowley, the Branch Animal Welfare Administrator, continued to forge strong relationships with the veterinary clinics and other establishments not only in our Branch area, but because of the inflow of Cats during the year, over a wider field. The number of cats coming into the Branch's care was one that was not unique to the Kent North West Branch, but thanks to John's relationships we were able to deal with all matters promptly and efficiently. John ensured that all animals signed over to the Branch's care always receive the best veterinary care possible at the caring Veterinary Surgeries. These animals are placed to ensure that there will be suitable homes for their future care.
20. The number of Special Event was regrettably reduced during 2019 and these were held by the Management and volunteers at the Dartford Shop. They held three events for which the Trustees were truly grateful. The income from these ventures is recorded in the Branch Annual Accounts. Special events help us to raise valuable funds and at the same time increase public awareness of the Branch's activities in Kent North West.
21. To conclude this report, I would like to place on record the thanks of the Trustees to everyone who has contributed to the success of the Branch during the year. This relies on the Branch Trustees working as a team with each taking responsibility for their own special part in the Branch success. Also, to a band of volunteers, each making a special contribution which enables us to achieve so much for animal welfare in our large Branch area. To each and every one of them I offer my own personal thanks for making my role as Chairman so much easier and rewarding.

On behalf of the Branch Committee I would like to offer sincere thanks to all those people and organisations who have so kindly given their time in helping us with our work throughout the year. Without this assistance, the Branch would undoubtedly have struggled in meeting its commitment to improving animal welfare. Our thanks are offered also to Chief Inspectors Steve Dockery, Mark Miles and Nick Wheelhouse together with their teams of Inspectors in our Group, and a special thank you to Becky Blackmore, our Branch Support Specialist for passing on to us her knowledge and experience in our work for Animal Welfare. I would also like to thank the Police, Local Authorities and Fire Brigades, together with all the other services who, when called upon, have helped as the need arose.

Eric Grover

**Branch Chairman,
for the Branch Trustees**

R.S.P.C.A., KENT, NORTH-WEST BRANCH
(Registered Charity No:210633)

**Annual Financial Report of the Branch Trustees for the year ended 31st
December 2019.**

1. The Branch Trustees have much pleasure in presenting to the Branch Membership, the Annual Financial Report together with the Annual Accounts and Balance Sheet of the Branch, accompanied by the report of the Independent Examiner of the Accounts as required by the Charity Commissioners, on what was undoubtedly, once again, another successful year for the Branch both actively and financially and gives the Branch Trustees confidence to believe that the financial future is secure for some years to come .
2. The Trustees are conscious of The Charities (Protection and Social Investment) Act 2016 and the regulation requirements of the Fund Raising Regulator. The Branch Shops accept donations of goods and the Branch via donations made through its collecting boxes. Other than a request for donations on its Website, the Branch does not solicit individual donations from members of the public or members of the branch via written correspondence or via Professional Fund Raising Agents.
3. The Branch Trustees are pleased to report once again that the Branch produce a surplus after the deficit of 2018. Once again, the Branch was able to make a contribution to the Branch Equine Rehoming Centre at Leybourne and this did not detract from the Branch reporting a surplus. We able to report with confidence that the Branch continues to have a very strong balance sheet and that the Trustees activities throughout the year continue to strengthen the Balance Sheet to the degree that at the end of the year the Branch Assets increased from the sum of £1,011,123.78p in 2018 of £1,040,069.60p in 2019. The Branch assets continue to exceed the magic £1,000,000 mark, so that members can be confident that the Branch remains in a very strong financial position.
4. 2019 once again proved to be a most challenging year with the number of animals coming into our care increasing, by about 18%. We continued with the unique initiative of the Female Cat Spaying Project although the cooperation with Cats Protection ended in 2018. Overall our business income decreased by £4184.39p (2%) and our overall income decreased by a total of £5634.19p (2.91%) the main variance due to an increase in, In Memorium donations. During 2019 our expenditure remained fairly consistent with that of the previous year falling by just £3409.94p (2.08%) resulting in an overall surplus of £43416.45p. compared to a working surplus of £45091.77p in 2018. The Branch can take still take pride in the fact that its business surplus amounted to £42317.17p. The Branch takes great pride that at the same time as achieving this result, we maintained and, in some cases, continued improved its services to animal welfare in our large Branch area.
5. During the 2018 the Branch Trustees reviewed the objectives that the Branch set itself at the end of the year 2001. The Trustees concluded that in the current financial climate and with the reducing number of animals that are coming into our care, the objective of an animal centre within the Branch area would not be sustainable and concluded that there might be other objectives that they could meet in reality. With this in mind, and following the discussions with the Regional Officers, the Trustees proceeded to the construction of the aforesaid Equine Rehoming Centre, which would stand in the name of the Branch in

perpetuity. This was expected to be completed by the end of 2019 but because of slippage in the construction programme, the completion of the Centre will not now be completed until early 2020.

6. During 2020 the Branch Trustees are committed to a review of its activities and the preparation of a five-year plan of activity review, setting challenging objectives for the next five years. We are convinced that we will seek to undertake new income generation objectives that will give the confidence that we can, and will, meet more challenging objectives as they arise. The Branch Trustees have in mind the possibility on undertaking more possible projects in the name of the Branch but not necessarily within the Branch area. We will seek to make suitable contributions to the field of animal welfare wherever we can make that contribution
7. This confidence maintained by the Branch Trustees is confirmed by the results that the two Branch Shops have continued to produce, and we would at this early stage of this report, offer sincere thanks to the Shop Managers of our two Shops, Brendan Woodbridge at the Dartford Shop and Valerie Oakman at Gravesend, together with their deputies and the band of hardworking and loyal volunteers, for all their efforts in the light of the continuing challenges for the retailing aspects of Charity Shop activities.
8. The results shown in the Accounts are a true reflection of the tremendous efforts made by the many volunteers who work for the Branch in all aspects of our work. Our core business is Animal Welfare and all in the Branch remain committed to this ideal. The Branch Trustees have reiterated the policy that any animal that can have a quality of life and be rehomed, will be accepted, and treated by the Branch.
9. The Branch has in the past derived the major part of its income from four major sources, the Branch Shops, Donations and Collecting Boxes and in more recent years Rent from the Branch properties. In recent years we have been fortunate to receive an allocation from the Door to Door Campaign which although had an interesting start has produced a good source of income. We are truly thankful to all those who sign up to the Campaign. Interest from Bank Accounts formerly a healthy source, remains most disappointing and it is for this reason the Branch Trustees agreed to make investments in property which produce much better returns on our investments and permit us to provide additional services as they are required.
10. Over recent years the source of income has changed and from the Accounts it will be noted that our main source of income is now our Branch Shops, producing, in 2019, some 63.59% (compared to 65.36% in 2017) of the Branch income and if we take into account Sale of Rags, this figure increases to 64.1% (compared to 65.41% in 2018) Income from Rent produced some 17.68% compared to 17.67% in 2018 whilst the income from the Door to Door Campaign continued to produce 12.9%, in the year, the same as 2018.
11. Items of expenditure items vary, and these are highlighted later in the report. As the Trustees reported last year the level of income that the Branch needs to raise normally increases annually. For 2019 we needed a sum approaching £170,000.00p to keep our day to day activities at the level we have achieved in recent years.
The figures for 2018/2019 remained fairly constant but the Trustees realise that they must remain vigilant in order to be alert to the everchanging requirements

that they may be forced to encounter within the ever challenging, world of animal welfare.

As stated earlier, during 2019 the Branch Trustees continued the major project of spaying female cats in the Branch area. The Branch have agreed that it will continue the service as it is required and fund the service from its own resources together with the Regional matched funding that was unspent at the end of the year.

12. The following paragraphs highlight the variations that have occurred within the accounts presented to you over the last twelve months.

INCOME:

13. The year 2019 was indeed another significant year for the two Branch Shops in what proved to be another tough Trading Year. The Income derived from the sale of donated items from the two shops still proves to be quite impressive. Total income from the shops decreased in the year just by £810.33p (0.6%) achieving a total of £132,690.28p compared to a total of £133,500.61p in 2018.. Income at the Dartford Shop, on the sale of donated items actually increased by 179.16p (0.3%) whilst at Gravesend the sale of donated items decreased by £989.49 (1.4%) but these figures do not detract from the truly remarkable results achieved by both shops in what is becoming a truly competitive world, not only from other charity shops but from shops selling goods at low and competitive prices. These results are truly outstanding in a difficult trading year for all charities and the increased challenge made to high street trading.

This performance was achieved due solely to the Shop Managers, their Deputies and their loyal and hard-working volunteer support as we have indicated earlier praise cannot be too high. The Branch is truly grateful for the quality and volume of the level of donations made to the shops in assisting to maintain the high level of excellence that has been established. The level of profit on sales will be noted in the Memorandum Trading Account in respect of the two shops and attached to the Accounts. During 2020 the Branch Trustees are considering the placement of "Donation Stations" at various locations throughout the Branch area to ensure a continuing supply of high quality donated items coming into the Branch Shops

The income derived from the sale of rags and recycling decreased in the year by £703.80p (22.6%), this decrease is attributed to both shops on an equal basis. It understood that there continues to be a global downturn on the price of textiles and the Shop Managers and the Trustees remain vigilant on seeking the best prices for its Rags and other recyclable items.

14. Subscription income decreased by £100.00p (19%) suggesting a slight decrease in the membership of the Branch which beginning to be more noticeable towards the end of the year. During the year the membership of the Branch remained at about the 165 level but reduced to around 160 at the end of the year. It has always been difficult to reconcile the income from subscription with actual number of members. This is due to the varying amount due to the Branch from varying classification of Membership Fees.
15. The income from Collection Boxes continued to decline and was reduced during the year by £176.44 (0.3%), but still produced an income of £2,178.56p. The drop in income is due to the fact that the Branch was requested to remove a

box from one of its sites. The Branch continues to seek new placement of collecting boxes and it was unfortunate that a couple of the sites at which we had boxes placed requested that the boxes be removed. The Branch, as reported previously continues to receive the cooperation of a number of Co-op Food outlets in placing a number of Collecting Boxes in the larger stores and the result has been truly phenomenal. It would be hoped that should the Branch receive the voluntary services of a Branch Fund Raising Administrator, their first priority would be the seeking of additional sites for the placement of our collecting boxes. The Branch Trustees continue to be most grateful to the help given by Mrs. Joan Burgess who regularly collects from the boxes throughout the Branch area and banks the collections on behalf of the Branch.

16. The heading in the income section of the accounts General Donations did not apply to seek support from the matched funding that it did in the previous year. This had the effect to reduce the donations that the Branch received overall in addition to the decrease in donations was recorded. The donations received during the year amounted to £ 987.52p a decrease of £1356.99p (58.9%) over the previous year.
Donations are a source of income that cannot be predicted. The Branch is grateful for all donations received but is conscious that we now receive donations in many guises, particularly through our shops.
17. There is always a tinge of sadness in the receipt of Legacies and In Memorium donations as it means that a loved one has passed on and that the deceased or the grieving family wish to mark the passing with either a legacy or donation. In 2019 the Branch received £1325.00p from Legacies and In Memoriam donations and the Branch has a duty to ensure that such donations are spent in the best manner for the benefit of Animal Welfare. The Branch is truly grateful to be remembered in this manner.
18. Income from Special Events undertaken for, and on behalf of, the Branch reduced from £971.91 in 2018 to a sum of £560.84 in 2019.. The total raised by special events is recorded in the main notes to the accounts and the Trustees are truly grateful to all those who gave their time and efforts in undertaking Special Events for the Branch
19. As reported earlier in this report Interest on the Branch bank accounts remained low with income at just £278.85p in 2019 compared to £167.79p in 2018, and although this indicates a small increase it remains very low in the light of the Capital it relates to. As we anticipated that for 2017 interest rates would continue to be at their lowest rate for several years, and unfortunately, we were correct. The Branch Trustees were truly justified in investing in the property to ensure that a reasonable level of income could be achieved to support its objectives.
20. Income from Rent received decreased in the year by a very small sum of £335.21p just under 1%. This was occasioned by the fact that one of the properties was vacated for a few weeks. It is to the advantage of the Branch that in the current financial climate Rents are on the increase and in 2019 produced a sum of £36,615.00 compared to £36,950.21p in the previous year. The Branch now receives income from the renting of properties at 158 Parrock Street Gravesend (the ground floor as a catering establishment and the upper floor flat), Gordon Road Dartford and Miskin Road, Dartford.

21. The Branch Trustees are extremely grateful for the help and advice they receive from the staff at McConnells, Estate Agents, Dartford, and for the assistance they receive in the management of the Branch's properties.
22. The Branch Trustees decided in 2006 that the Legacy from the late L.C. Croucher (referred to in the Annual Accounts), having a restriction of only being able to be spent on equipment for the treatment of animals, it would be better placed in a separate deposit account within the Branch Funds as a Restricted Account, on the abolition of the Branch Development Fund and should be used as necessary within the terms of the Branch objectives. In 2018/9, a small proportion of the fund was allocated to the Branch Equine Rehoming Centre.

EXPENDITURE:

23. Members will recall that since 2013 year the Branch has used a system of payments of Creditors by electronic payments. The system permits a payment directly in to a payees Bank Account without the need for the writing of cheques and the posting to the client. Although there is a charge for each transaction, the system eliminates the need for postage on each payment and the need for the payee to transport a cheque to the bank. The system continues to operate in an efficient manner and all of the Branch payees have readily accepted the payment system.
24. Overall it will be noted that the Business expenditure of the Branch did reduce by £3,409.94p (2.08%) and that the contributions to the Branch Equine Unit which were funded from the Branch Deposit Accounts amounted to £13,922.00p. A total of £175,000 was originally allocated for the original estimates for the Equine unit in 2018 and that the actual contributions to the project to the end on 2019 was £149,079.58p although the Branch does have a Capital Commitment to meet the costs of a Training/Exercise Ring in the sum of £19,000.00p, which was hopefully going to be constructed 2019, but due to a number of factors will be carried over to 2020.
25. Traditionally the highest level of expenditure for the Branch was for many years Veterinary Fees although the Branch did spend 10% in 2018, and this increased to 11.16% in 2019. This was obviously occasioned by the increase in requests for the Branch to meet Veterinary costs which show a slight increase over previous years. The highest level of expenditure in the Animal Welfare field for 2019 was once again Care of Animals although, there was a reduction in the costs of this service as the Branch spent just 14.67% in 2019 compared to 15.58% on this service in 2018. It should be remembered that Animal Welfare is the core business of the Branch and we can be proud of the number of animals that came into our care last year. The expenditure on Care of Animals equated to about £463.37p per week in 2019 compared to £502.02p per week in 2018. The Branch is not able to control the influx of animals coming into the Branch but would never refuse any animal requiring veterinary assistance, although it is not always possible with all the will in the world to be able to save every animal that we are able to take in. The Branch spent in the a sum of £1,526.54p per month on Veterinary Fees in 2019 compared to a sum of £1,400.00p per month in 2018 and no animal would be denied treatment on account of costs .and, even more recently, budget costings
It will be noted that the Branch Clinic, remained suspended at the Shrubbery Clinic could not be reinstated due to the unavailability of Veterinary cover.

The Branch Trustees are truly very grateful to the Shrubbery Veterinary Practice for the provision of this very valuable service and understand the problems that are involved in providing such a service. It will be part of the Branches future plans to provide a clinic service within the Branch at some time in the future and will seek to provide the service at a Veterinary practice that is happy to work with the Branch on such a project. The Branch is also fortunate that a number Veterinary Practices offer the Branch generous discounts on the costs of animal treatments

26. The actual expenditure on Veterinary Fees increased from a figure of £16,744.85p in 2018, to a figure of £18318.44p an increase of £1,573.59p (8.6%) mainly due to an increase in requests for our services and possibly due to the aforesaid increase in Veterinary Fees.
27. At the same time the Branch expenditure on Drugs reduced in 2019 to a sum of £6,363.05p compared to £6,673.13p in 2019, a decrease of £463.37p (4.6%) over the previous year.
28. Expenditure on Care of Animals reduced by £2,019.27p (7.7%). The reason for the reduction is probably that animals were kept for a less time in private boarding care than in previous years and also rehomed sooner from the three Centres that the Branch has arrangements with. The SAWA Statistics reveal that we took in some 222 animals in 2019 compared 184 animals in 2018. During the year it is also evident that less animals were kept in Private Establishments than in the previous year. Members can be assured that no animal in need would ever be refused a home. During the year the Branch continued the arrangements for both cats and dogs to be cared for in Kennels and other private boarding Catteries in the Branch area before being re-homed.

The Branch continues the arrangements it has into arrangements with the Ashford Branch Garden Cattery, the Canterbury and Dover Branch Cattery and also Bluebell Ridge Cattery, Hastings, for the rehoming of Cats and the Branch benefits from a proportion of the rehoming fees that are charged by these Catteries. The demand for places continued to be fairly high in 2019 for certain periods of the year and the Branch had, once again to call on the services a number of Private Catteries including the Lodge Kennels & Cattery with whom the Branch has developed a good working relationship. The Branch Animal Welfare Administrator, John Bowley continue his tremendous role in arranging for the placements and transportation of the animals that come into our care.

29. The Branch expenditure on the Branch Neutering Scheme reduced slightly with a reduction in overall expenditure of £100.05p, (5.8%). As we have reported in previous years the Branch has agreed to continue neutering as was undertaken by the previous but now extinct Regional Scheme and now meets expenditure directly although the Branch was able to recover some of the neutering fees under a scheme administered by H.Q., no claims were registered in 2019. As also reported previously and in the main Branch report the Branch undertook a project jointly with Cats Protection for the Spaying of female cats and although this arrangement ended in 2018 the Branch continued to offer the service funding the costs itself. Full details of the Branch expenditure under this heading is shown in the notes to the Accounts. At the end of 2019 a sum £1,575.00p remained to be carried forward to 2020 as no contribution was sought from the Matched Funding for the year..
A total of 20 cats were spayed under the Female Neutering scheme bringing the total treated to 240 at the end of 2019.

A sum of £5,000 was received in 2015 from the Regional Board for matched funding of the Branch's Contribution. Of this sum, £1575.00 will be available in 2020 should it be needed. The Branch Trustees have however agreed that the cost of case can still be met whilst there is a balance in the matched funding account.

The Branch Trustees are extremely grateful to the services of a number of Veterinary Practices that have supported the Cat Spaying which lasted some three years. The Branch is particularly grateful to Becky Blackmore for her negotiations of the introduction of the schemes with the participating Veterinary Practices.

30. The Branch Contribution it is required to be paid HQ, and was set at a rate of £110.00p in 2019, on the implementation of a formula devised by HQ, and as noted in the Accounts, this is accounted for as Sundry Expenditure.
31. The expenditure on Shop Staff costs during the years increased by £2410.29p an increase of 5.47%. This was mainly due to an increase in the National Living Wage of some 4% which was operative from April 2019. It is the policy of the Branch Trustees to implement the Nation Living Wage in accordance with the relevant legislation and to pay slightly above the Governments rates whilst at the same time retaining the differences in the rates paid to the Managers and their deputies. Additionally the Trustees appointed a new Deputy Manager at the Dartford Shop for 16 hours a week. The intention was that the additional time would be available to increase sales on the Internet. Regrettably, the increase in the sales by e-bay were not forthcoming.
32. Printing & Stationery costs increased by £126.56p (27.43%) in the year. The new photo copier leased from KCC in 2016 is proving to produce much cheaper copies for materials that may be required in the Branch Shops. It is also be able to produce A3 posters in colour, for advertising at the Branch Shops should it be needed. The modest increase is due to a general increase in the commodities needed for the Photo copier.
33. Expenditure on Postage and Telephone decreased by £356.85p (12.5%). Included within this heading are the facilities of the Branch helpline and there is a mobile phone service for the Branch Animal Welfare Administrator. During the year the Trustees continued to improve the service and every call now reaches an officer of the Branch with an answerphone alternative on each of the extensions. It would seem that many members of the public, including those outside of the Branch area seem to find the Branch number quicker for contact with the RSPCA than the National helpline. Each call is dealt with and the caller notified of the correct contact and where possible directed to the correct number. The Dartford Shop also has access to a BT Broadband system installed for sales to be made via the internet. The telephonic helpline information service of the Branch appears to be working satisfactorily.
34. The cost of Shop Equipment decreased by £314.55p (18.3%). Many of the Shop equipment purchases are essential for the smooth operation of the Shops. No major items of shop equipment were purchased during 2019.
35. As has been our practice in recent years, Rent & Rates have been identified separately from Heating and Lighting Costs. This will make it easier for members to understand the individual element of the expenditure. Regarding Rent, the only Rent now payable is in respect of the Dartford Shop and this was

increased to £27,500 in 2017. In the light of the delicate trading position at the Dartford Shop an application was made to the Landlord to request a reduction in the rent. Negotiations remain on going as this report was being prepared and the results of the negotiations will be carried into the new year by the Branch Trustees.

The decision to purchase the premises at 161, Windmill Street Gravesend means that no Rent is payable, although Rates are payable and for 2019 this amounted to £779.00p. Members may wish to be reminded that the expenditure on the conversion of the two units into a single trading unit at the Dartford Shop will be written off over the ten years of the lease, which will expire in June 2021. Expenditure on the Heating and lighting element of the expenditure increased by £666.46p (17.06%), this increase is occasioned by the general increase in utility services that have been on the upward trend in recent years.

36. The expenditure on Maintenance and Repairs and Waste disposal at the Shops is also been shown separately again this year to give a clearer understanding of the elements of the expenditure. The expenditure on Maintenance and Repairs decreased by sum of £8,102.62p (63.5%). Members will no doubt wish to be reminded that in 2018 there was a major expense at the Dartford Shop on the installation of an Air conditioning system which will overcome extreme cold and heat conditions in the future, whilst at the Gravesend Shop a major piece of work was the updating of the CCTV system. In 2019 there were no major items under the Maintenance and Repair heading other than the replacement of the fire alarm system at the Gravesend shop in the sum of £1698.00p and a major repair to the emergent lighting system in the sum of £477.00p. At the Dartford Shop there were no major repairs needed other than replacement glass to the shop counter and some repairs to the CCTV system the combined cost of these was under £500.00p There was an increase in the charges for Waste Disposal of £411.59p (7%) and this reflects the increases in charges levied by the service providers.
37. Irrecoverable VAT increased by £1,485.43p (34.5%) the increase being due to increases in the expenditure heads where irrecoverable VAT applies. It should be noted that expenditure of activity in the neutering of "Staffies" attracts VAT which is not recoverable as is any work on the Branch properties. The Branch Clinic, the Female Cat Spaying Project and the Subsidised Cat Neutering Scheme also attract VAT which is not recoverable. It has been clarified that the Branch can only recover VAT on Animal Welfare matters where the animal is to be rehomed and for which a fee is likely to be received. The Branch carefully monitors and tries to be aware of the relevant log numbers of all the animals that are dealt with by the Branch and the discharge details for all the animals that we care for.
38. It will be seen from the foregoing and reference to the Branch Accounts, that the Branch has once again recorded, after taking into account legacies and in Memorium payments a surplus in our business income of £42867.82p compared to a surplus of £45,091.77p in 2018. Members can assured that the Branch remains in strong financial position and can confidently continue to plan its main objectives although that will not now be the provision of an Animal Centre within the Branch's area, we can be confidentially proactive in the field of animal welfare and continue to be the progressive Branch that we have developed over recent years and that we will confidently meet any challenges that we may encounter in the near future.

39. Finally, the Branch Trustees would like to place on record their thanks and appreciation for all the assistance and support that we have received during the year.
40. The past year is one of which we feel the Branch can once again be justly proud of its achievements with new innovations and improving services. 2019 will undoubtedly be another year that will set us new challenges, and the possibility of a new initiatives once the Equine Rehoming Centre at Leybourne has been completed, and with the will and determination we have exhibited in the past we will meet those challenges confidently and with resolve. The Trustees remain confident that they are on course to meet the main objectives of our Branch and can have the confidence to assure ourselves that the targets it sets itself will be achievable and the Branch will continue to be progressive in the field of animal welfare as the demands on its services require

Eric Grauer,
Branch Chairman,
on behalf of the Branch Trustees.

**THE ROYAL SOCIETY FOR THE
PREVENTION OF CRUELTY TO ANIMALS**

KENT NORTH - WEST BRANCH
(Registered Charity No. 210633)

ANNUAL ACCOUNTS

and

BALANCE SHEET

- for the year ended -

31st DECEMBER 2019

**ROYAL SOCIETY FOR THE PREVENTION OF CRUELTY TO ANIMALS.
KENT, NORTH-WEST BRANCH
(Registered Charity No: 210633)**

ANNUAL REPORT FOR THE YEAR ENDED 31st DECEMBER 2019

The Royal Society for the Prevention of Cruelty to Animals is incorporated under an Act of Parliament and each Branch is governed by the rules of the Society. The Kent, North-West Branch is a registered Charity No. 210633. The address of the Branch Secretary of the Kent, North-West Branch is: 201, Burnham Road, Dartford Kent, DA1 5AU. The Administrative Office of the Branch is at 37, Gordon Road Dartford Kent DA1 2LG.

The day to day affairs of the Branch are managed by a Branch Committee. During 2018 the members of the Branch Committee were:

Mrs.E.M. Grover.	Branch President. (ex officio wef 25 th July 2018)
Mr. E.J. Grover.	Branch Chairman.
Mrs J. Allen	Branch Vice Chairman.
Miss C. Campbell.	Branch Secretary
Miss N. Dunton	Branch Treasurer
Mr. J. A. Bowley.	Branch Animal Welfare Administrator.
Mr B. Charman	Branch Trustee
Miss L. Cheary	Branch Trustee (to 31 st May2019)
Mr K. Coleman	Branch Trustee (to 26 th June 2019)
Mrs. H. Kingston.	Branch Trustee (to 20 th August 2019)
Mr T. Maddison	Branch Trustee
Mr A. McDermott	Branch Trustee
Miss K. Ward	Branch Trustee

During the year the Branch employed a Full Time Manager and 2 Part Time Deputy Managers supported by a Casual Assistant Deputy Managers at the Branch Charity Shop at 2-3, Market Place, Dartford Kent and a Full Time Manager and Part Time Deputy Manager at the Branch Charity Shop at 161, Windmill Street, Gravesend.

The object of the Charity is to promote kindness and prevent or suppress cruelty to animals, and to do all such lawful acts as the Society may consider to be conducive or incidental to the attainment of those objectives.

The Charity is dependent on donations and fund raising to pay for its activities. The Branch also receives part of the subscriptions paid by members. The Branch constitution is approved by the National RSPCA umbrella body, Charity No.219099, which is considered a related party for accounting purposes. During the financial year, the Branch received a total of £26,739.00p (Door to Door Campaign) grant funding from the National RSPCA for the Branch's purposes. Also, during the financial the Branch paid a grant to the National RSPCA in the sum of £13,922.00p to fund the Kent North West Branch Equine Rehoming Centre which is located at the Leybourne Animal Centre. The Branch also receives a number of umbrella body services, including legacy administration under the Branch Legacy Scheme, membership administration and practical guidance and assistance from a Branch Support Specialist employed by the National Society.

Details of the Charity's activities are disclosed in the accounts. There have been no significant activities during the year requiring a report to the Charity Commissioners. Legacies and In Memoriam donations to the value of £1,325.00p were received during the year. Details of assets held by the Branch are disclosed in the accounts. There have been no material post balance sheet events.

E.J. Grover,
Branch Chairman.
31st March 2020.

ROYAL SOCIETY FOR THE PREVENTION OF CRUELTY TO ANIMALS

KENT NORTH-WEST BRANCH

BALANCE SHEET AS AT 31st DECEMBER 2019

ACCUMULATED FUNDS

	<u>2019</u>	<u>2018</u>
Balance brought forward	1,011,123.78	1,003,189.59
Property Revaluations in Year	-	98,000.00
Surplus for the Year	28,945.82	(90,065.81)
	<u>1,040,069.60</u>	<u>1,011,123.78</u>
	=====	=====

BRANCH RESTRICTED FUNDS:

L.C.Croucher Legacy for Equipt.	33,134.53	33,068.33
	33,134.53	33,068.33

BRANCH GENERAL FUNDS:

Fixed Assets(Note1)

Property 158,Parrock Street Gravesend.	263,000.00	263,000.00
Property 37,Gordon Road,Dartford	205,000.00	205,000.00
Property 10 Miskin Road,Dartford	196,870.33	196,870.33
Property 161,Windmill Street,Gravesend	168,749.50	168,749.50
Branch Shops Fix.& Fittings	2,912.07	5,824.12
Plant and Equipment	Nil	Nil
	<u>836,531.90</u>	<u>839,443.95</u>
	-----	-----

Current Assets

Nat West Capital Reserve Account	108,826.69	144,224.04
Debtors & Prepayments	14,491.66	14,226.46
Branch Pay Pal Account	577.42	384.45
Cash at Bank & In Hand	56,657.17	53,109.32
	<u>180,552.94</u>	<u>211,944.27</u>
less Creditors	(4,674.77)	(67,857.77)
Balance Rabbit Awareness Projects	(2,000.00)	(2,000.00)
Balance Staffie Matched Funding	(1,575.00)	(1,575.00)
Balance Female Cat Spaying Project	(1,900.00)	(1,900.00)
Net Current Assets	<u>170,403.17</u>	<u>138,611.50</u>
	-----	-----

TOTAL BRANCH GENERAL FUNDS

1,006,935.07 **978,055.45**

TOTAL ACCUMULATED FUNDS

1,040,069.60 **1,011,123.78**

E.J.Grover.

CHAIRMAN

J.R.Allen

VICE CHAIRMAN

T.A.Maddison

BRANCH TRUSTEE

ROYAL SOCIETY FOR THE PREVENTION OF CRUELTY TO ANIMALS

KENT NORTH-WEST BRANCH

INCOME AND EXPENDITURE ACCOUNT FOR THE YEAR ENDED 31st DECEMBER 2019

	BRANCH GENERAL AND AUXILIARIES.	
INCOME:	2019	2018
Microchipping & Rehoming	2,043.39	1,881.38
Subscriptions	525.00	625.00
Rent Received	36,615.00	36,950.21
General Donations/Grants	987.52	2,449.51
Donations via Inspectors	10.00	-
Collecting Boxes	2,178.66	2,355.00
Door to Door Campaign	26,739.00	27,034.00
Special Events****	560.84	973.91
Goods Sold	13.73	65.35
Dividends and Interest	278.85	167.79
Shops Gravesend & Dartford	132,690.28	133,500.61
Rags and Recycling	3,112.41	3,816.21
Sundry Income	0.00	120.00
	205,754.68	209,938.97
EXPENDITURE:		
Motor Vehicle & Travelling	197.15	124.60
Printing and Stationery	588.01	461.45
Postage and Telephone	2,492.76	2,849.61
Rent & Rates	28,426.74	28,377.09
Heat, Light & Water	4,572.56	3,906.10
Insurance/Security	2,293.62	2,612.94
Maintenance and Repairs.	4,656.69	12,759.31
Waste Disposal	6,273.55	5,861.96
Shop Staff Costs	46,497.03	44,086.74
Shop Equipment	1,403.46	1,718.01
Goods for Resale	-	81.78
Depreciation & Write Offs	2,912.05	2,912.05
Professional Fees	5,938.67	5,059.21
Branch Neut.Scheme	1,603.63	1,703.68
Transfer to Neutering Funds	-	105.00
Veterinary Fees	18,318.44	16,744.85
Drugs and Medicines	6,363.05	6,673.13
Care of Animals	24,095.11	26,114.38
Microchipping & Rehoming	185.79	242.73
Annual & General Meetings.	64.00	56.20
Sundry Expenses	1,544.82	871.68
Irrecoverable VAT	5,784.73	4,299.30
	164,211.86	167,621.80
Surplus/(Deficit) before Legacies	41,542.82	42,317.17
Legacies and In Memoriam donations	1,325.00	2,774.60
Grant to Leybourne Equine Project	(13,922.00)	(135,157.58)
Surplus/(Deficit) after Legacies	28,945.82	(90,065.81)

ROYAL SOCIETY FOR THE PREVENTION OF CRUELTY TO ANIMALS
KENT NORTH-WEST BRANCH
(Registered Charity No: 210633)

NOTES TO THE ACCOUNTS.

1. ACCOUNTING POLICIES.

The principal accounting policies of the Branch are set out below. The policies have remained unchanged from the previous year.

(a) Basis of Accounting.

The financial statements have been prepared under historical cost conventions and in accordance with applicable accounting standards.

(b) Income.

Income is accounted for when received.

(c) Depreciation of Tangible assets.

During 2005 the Branch Trustees carried out a review of the methods used to depreciate Capital Expenditure. It was concluded that the use of a 10% reducing balance gave an unrealistic value of the items over a long term. In future all tangible capital assets would be written off over a determined period with each case of expenditure to be determined at the time of purchase. Details of the period of write off would be recorded in the Branch Asset Register.

As a result of the trustees revised policies the following items were written off at the following rates:

Freehold Buildings.	Nil. During 2013 the Trustees arranged for the revaluation of some of the Branch Property. During 2018 a further revaluation of the property at 158, Parrock Street, Gravesend, was carried out. The results of that revaluations are shown in the Balance Sheet. The valuations were prepared on an open market basis by McConnells, Chartered Surveyors.
---------------------	--

Shop Fixtures and Fittings.	The majority of the original assets held at the Branch Shops have now been written off. The conversion costs for the development of the Dartford Shop Premises are to be written off over the ten year period of the lease. (2011 – 2020)
-----------------------------	--

Furniture, Plant and Equipment. The use of a 10% reducing balance to all previous items under this heading have now been either depreciated or written off.

(d) Irrecoverable VAT

It is the Branch's policy to write off irrecoverable VAT through the Income & Expenditure account when incurred.

2. FIXED ASSETS.

	Freehold Property.	Branch Shops Fix & Fitt.	Furniture Plant and Equipment.	TOTAL
Balance at 1st Jan. 2019.	833,619.83	5824.12	Nil	839443.95
Add Revaluation in year.	Nil	Nil	Nil	000.00
Less Depreciation and Write offs for year.	Nil	(2,912.05)	Nil	(2,912.05)
Balance at 31st Dec 2019	833,619.83	2,912.07	00.00	839,443.95
Made up of:				
Original cost.	836,242.71	51,045.13	4,515.46	891,803.30
Less Accumulated Depreciation	(2,622.88)	(48,133.06)	(4,515.46)	(53,359.35)
	833,619.83	2,912.07	00.00	839,443.95

3. BRANCH (formerly the REGIONAL) NEUTERING SCHEME.

The former South East Regional Board (now part of the Southern Region) terminated the former Regional Neutering Scheme arrangements on 31st December 2003. The Branch Trustees have agreed to maintain the neutering policy on the same basis as the former Regional Scheme operated.

During the year the Branch were notified that they would be able to continue to recover some of the expenditure made in respect of certain types of neutering.

In 2011, the Branch Trustees agreed to join the Regional Initiative for the neutering of Staffordshire Terriers and like cross breeds. Arrangements were made with the Shrubbery Veterinary Centre for the administration of the initiative and during 2012 these arrangements were extended to the Pilgrims Veterinary Clinic, Dartford during 2013 and to the Meopham Veterinary Hospital during 2014. At the 31st December 2019 a total of just 2 animals had received the

treatment during the year. (This brings a total of 230 animals having been treated since the initiative commenced.) The Branch also received a further grant in 2015 from Regional Funds to assist the Initiative on a "matched funding" basis. The Balance of the matched funding grant that will be available for 2020 is shown in the accounts. It will be noted that because of the low take up in the Initiative no funding was drawn for the Regional Funding for 2019

In addition to these services during 2017 the Branch continued the project inaugurated in 2015 to spay female cats from the age of four months and received support from Cat Protection, who agreed to meet half of the costs of the Spaying. The funding from Cats Protection ceased in 2018.

The Branch received the continuing support from a number of Veterinary Surgeons in the area together with support in the form of a Grant from Three County Councillors at the commencement of the Project.

A summary of the total expenditure in respect of the three services is as follows:

Branch Neutering Scheme:

Expenditure in respect of Neutering	1299.41	
Total:		1299.41

Staffies Neutering Initiative:

Staffies Neutering Initiative Expenditure	83.34	
Total:		83.34

Female Cat Spaying Project:

Expenditure in respect of Cat Spaying	220.88	
Total:		220.88

Total as per accounts: **1603.63**

In the light of the low take up of the various schemes no application was made in respect of the RSPCA refund scheme

4. DONATIONS/GRANTS.

Included in the heading Donation/Grants this year is the contribution made to the Branch in the form of Regional Matched Funding Grants. No Matched funding Grants were applied in 2019 The figure in the Accounts is therefore summarised as follows:

General Donations.	987.52
Donations via Inspectorate	10.00
TOTAL.	<u>997.52</u>

.5. SPECIAL EVENTS.

During the year the Special Event were undertaken in the name of the Branch and the income from these events is summarised as follows:

	£.	p
Dartford Shop- Festival Shop	362.34	
Dartford Shop Quiz Night	175.00	
-----Dartford Shop Boot Fair	23.50	
TOTAL	560.84.	

6. HEAT, LIGHT, WATER & RATES.

Payments made in respect of the items included within this heading are summarised as follows:

	<u>Electricity.</u>	<u>Gas.</u>	<u>Water.</u>	<u>Total</u>
Dartford Shop	£1,979.91		£163.40	£2,112.46
Gravesend Shop	£ 985.82	£317.51	£279.16	£1,582.49
Branch.	£ 186.58	£200.78	£ 490.25	£ 877.61
			TOTAL	<u>£4,572.56</u>

7.. PROFESSIONAL FEES.

Professional fees includes the following amounts for the Independent Examination of the Branch's Accounts:

<u>2019.</u>	<u>2018</u>
£600.	£650.

8. CREDITORS.

	<u>2019.</u>	<u>2018.</u>
Trade.	£3,959,77p	£ 67,097.77p
Accruals	£ 715.00p	£ 760.00p
	-----	-----
	£ 4,674.77p	£ 67,857.77p
	-----	-----

The increase in Creditors reflects the Branch Commitment to the funding of the Kent North West Equine Rehoming Centre at the Leybourne Animal Centre. Final Payments which were expected in 2019 did not materialise

9. TRUSTEES REMUNERATION & EXPENSES.

No Trustee or connected person received any remuneration during the year. Reimbursement of expenditure made on behalf of the Branch, was repaid to the Branch Chairman (E.J. Grover) in the sum of £59.20p in respect of the purchase of sundry items. Receipts in respect of all purchases made are retained in the Branch files.

10. CAPITAL COMMITMENTS.

The Branch is committed to the funding of an Equine Rehoming Centre and was approved by the Trustees in 2017. The costs of Stages One and Two plus other sundry items (including the Planning costs) of the project were included in the accounts for the year ended 31st December 2018. The Branch is also committed to the funding of an exercise ring which it had been hoped would be carried out in 2019. However, this did not prove to be the case because of planning and construction issues. The work will be carried forward to 2020 at a revised cost of £19,000

R.S.P.C.A. KENT NORTH WEST BRANCH.

ANNUAL ACCOUNTS 2019

STATEMENT OF FINANCIAL ACTIVITIES (PAGE 1 of 2)

INCOMING RESOURCES:

Incoming resources from generated funds	<u>2019</u>		<u>2018</u>	
(i) Donations, legacies and other incoming resources:				
General Donations	987.52		2,344.51	
Donations via Inspectors	10.00		-	
Donations from Regional Grants	-		105.00	
Collecting Boxes	2,178.56		2,355.00	
Door to Door Campaign	26,739.00		27,034.00	
Income Received from Recycling	-		20.00	
Income from Legacies & In Memorium donation	1,325.00		2,774.80	
		31,240.08		34,633.31
 (ii) Activities for generating funds.				
Commission Received iro Pet Insurance	-		120.00	
Sale of donated Items Dartford Shop	62,738.08		62,558.92	
Sale of donated items Gravesend Shop	69,952.20		70,941.69	
Sale of Rags Dartford Shop	1,894.00		2,270.32	
Sale of Rags Gravesend Shop	1,218.41		1,525.89	
Sale of RSPCA Items	13.73		65.35	
Donations from Microchipping	-		-	
Income from Rehoming Fees	2,043.39		1,881.38	
Special Events	560.84		973.91	
		138,420.65		140,337.46
 (iii) Investment Income				
Income from renting of Gravesend Property	14,340.00		14,340.00	
Income from renting of Dartford Properties	22,275.00		22,610.21	
Interest Nat Savings A/c	-		-	
Interest Bank A/cs	278.85	36,893.85	167.79	37,118.00
 (iv) Incoming resources from charitable activities				
Subscription Income	525.00		625.00	
	-	525.00	-	625.00
 Total Incoming Resources:		207,079.58		212,713.77

R.S.P.C.A. KENT NORTH WEST BRANCH.

ANNUAL ACCOUNTS 2019

STATEMENT OF FINANCIAL ACTIVITIES (PAGE 2 of 2)

RESOURCES EXPENDED:

	<u>2019</u>		<u>2018</u>	
(i) Costs of generating Funds				
Staff Costs at Shops	46,497.03		44,086.74	
Goods for Resale	-		81.78	
Purchase of Collecting Boxes	-		-	
Shop Equipment	1,403.46		1,718.01	
Rent and Rates Dartford Shop	27,647.74		27,270.84	
Rates Gravesend Shop	779.00		1,106.25	
Shop Overheads	15,671.00	91,998.23	21,581.40	95,845.02
(ii) Charitable activities				
(a) resources granted in furtherance of the Branch's objectives				
Care of Animals	24,095.11		26,114.38	
Regional Quota	105.00		105.00	
Microchipping	185.79		242.73	
Grant to Leybourne Equine Rehoming Centre	13,922.00		135,157.58	
Branch Neutering Scheme	1,653.63		1,658.68	
Transfer to Neutering Funds		39,961.53	150.00	163,428.37
(b) costs of activities in furtherance of the Branch's objectives				
Veterinary Fees Dartford Clinic	Nil		Nil	
Veterinary Fees Gravesend Clinic	117.15		25.00	
Veterinary Fees Emergency and other cases	18,201.29		16,719.85	
Drugs and Medicines	6,363.05	24,681.49	6,673.13	23,417.98
(c) support costs for (a) and (b).				
Travelling Expenses	109.35		100.25	
Printing and Stationery	543.22		283.16	
Postage and Telephone	1,260.08		1,853.36	
Electricity Gas and water	877.61		328.56	
Insurance & Security Costs	1,803.62		2,122.94	
Maintenance & Repairs	1,326.33		2,846.86	
Waste Disposal Costs		Shop O/heads	-	Shop O/head
Depreciation of Fixed Assets	2,912.05		2,912.05	
Professional fees (Properties)	5,343.67		4,464.21	
Sundry Expenditure	922.95		226.12	
Irrecoverable VAT	5,734.73	20,833.61	4,299.30	19,436.81
(d) Governance costs.				
Meetings	64.00		56.20	
Professional fees (Audit)	595.00	659.00	595.00	651.20
Total Resources Expended:		178,133.86		302,779.38

RSPCA, KENT,NORTH WEST BRANCH

ANNUAL ACCOUNTS 2019

STATEMENT OF CASH FLOWS DURING THE YEAR

	2019	2018
TABLE ONE: STATEMENT OF CASH FLOWS		
<i>Net Cash provided by (used in) operating activities</i>	(31,060)	(30,877)
<i>Cash Flows from Investing activities</i>		
Purchase of property,plant and equipment		
<i>Net Cash Provided by (used in) Investing activities</i>	(31,060)	(30,877)
<i>Cash Flows from financing activities:</i>		
Repayments of borrowing		
<i>Net Cash Provided by (used In) financing activities</i>		
<i>Change in cash and cash equivalents in the reporting period</i>	(31,060)	(30,877)
<i>Cash and cash equivalents at the beginning of the reporting period</i>	230,786	261,663
<i>Cash and cash equivalents at the end of the reporting period</i>	199,916	230,786
TABLE TWO: RECONCILIATION ON NET INCOME/(EXPENDITURE) TO NET CASH FLOW FROM OPERATING ACTIVITIES		
<i>Net Income for the reporting period (as per the statement of financial activities)</i>	28,946	(90,066)
<i>Adjustments for :</i>		
Depreciation charges	2912	2912
Transfer of Funds	0	(105)
Increase/(decrease) in debtors	266	(2,522)
Increase/(decrease) in creditors	(63,183)	58904
<i>Net cash provided by operating activities</i>	(31,060)	(30,877)
TABLE THREE : ANALYSIS OF CASH AND CASH EQUIVALENTS		
Cash in Hand	199,916	230,786

(Registered Charity 210633)

(This account does not form part of the Branch Annual Accounts)

Page 33

STATEMENT OF THE BRANCH COMMITTEE'S RESPONSIBILITIES.

Rule 3.3 of the R.S.P.C.A. Branch Rules (January 2003 edition) empowers the Branch, subject to certain conditions, to raise funds in the name of the Branch for the General or any special purposes of the Branch or for any purpose of the Society or another Branch but all fundraising must be authorised by and reported promptly to the Branch Committee.

Rule 7.1 provides that the Branch Committee as charity trustees have responsibility for the Branch and its property and funds.

Rule 11.1 requires that the Branch Committee must comply with the requirements of the Charities Act 2011 as to the keeping of financial records, the audit or independent examination of accounts and the preparation and transmission to the Charities Commission of :

annual reports;
annual returns; and
annual statements of account.

STATEMENT OF BRANCH RISKS MANAGEMENT POLICY

The Branch has identified the major risks to which it is exposed and has put into place systems and procedures to minimise the risks, as follows:

- (i) **Misappropriation of funds.** In an effort to prevent peculation of the Branch's assets, it has set up an internal control system which requires authorisation of all transactions by a person independent of the Branch Treasurer. Income at the Branch's Shops is monitored by the recording of receipts by an electronic till and a check of receipts is made at the end of each working day. The Branch also maintains an asset register for all Capital assets.
- (ii) **Monitoring of income to ensure that there are sufficient resources to meet commitments.** The Branch Officers regularly monitor resources to ensure that there are funds available to meet its commitments.
- (iii) **Reliance on Sources of income.** The Branch has in recent years, opened two Charity Shops in an effort to improve the income that is required to meet the demands on its services. In 2012 The Branch purchased a property with the purpose of renting to a tenant and producing additional income. During 2013 the Branch Trustees agreed to lease the ground floor of 158, Parrock Street Gravesend on a commercial basis. The lease was completed in 2014. A new lease in respect of the property was granted in 2017 for a period of 10 years. Also, during the year 2013 the Branch purchased the property 161 Windmill Street, Gravesend and this will in the longer term eliminate the liability to pay rent on the property. The Branch now rents a total of four properties which continue to produce additional income for the Branch.
- (iv) **A Commitment to fund Capital Projects.** The Branch has adopted a number of objectives to meet its service provision in the medium and long term. It has agreed that no progress can be made on these projects until sufficient resources are in place to fund any project to arise from those objectives.
- (v) **Loss of Key Volunteers.** The Branch has adopted a policy of recruiting and training, where possible, additional volunteers to undertake various duties that are involved in running a Branch of the size and character of the Kent, North West Branch of the RSPCA.

STATEMENT OF BRANCH RESERVES POLICY.

The Branch Committee has reviewed the Branch Reserves Policy during the year and has considered that the steps taken to ensure a source of regular income are now adequate to be confident that the resources within the Branch are sufficient to meet its current commitments throughout the coming year and beyond, if commitments are continued at the current rate of expenditure. It further considers that a Current Account balance in the range of £10,000.00 to £20,000.00 would be sufficient to meet all arising commitments. It resolved that the Branch reconsider the need for a Branch Development Fund, to accrue a reserve to meet the policy objectives set by the Branch in December 2001. The Branch Committee agreed to review its long-term objectives in the light of estimated requirements of the Branch in respect of the Branch Clinics and animal home facilities. During 2016 the Trustees agreed that the target for the Development Fund should remain at the figure of £1,000,000.00p. and this would be reviewed in the light of any changing circumstances. During 2017 the Branch Trustees re-considered the retention of a Development Fund in the light of current financial conditions. The Trustees concluded that the aspirations of the Branch developing an Animal Centre in the light of the numbers of animals that come into its care and considering the continuing escalating costs of such a venture, the objective would be unsustainable and therefore concluded that the Development Fund should be dissolved, and the Funds recorded in the General Funds of the Branch.

During 2006, the Branch received a legacy from the estate of the late L.C. Croucher. The legacy has a stipulation that the money should only be expended on equipment to be used in the treatment of animals. The Branch Trustees have therefore agreed that the legacy should be maintained in a separately identifiable account within the Branch Funds and recorded as a Restricted Fund and should be available, only for the purchase of equipment required in connection with the meeting of the Branch's revised objectives. During 2018 the Branch Trustees agreed that some of the equipment costs of the Kent North West Branch, Equine Rehoming Centre could properly be appropriated to this account. Consequently, a sum of £12,545.00 of this fund has been expended on the said Branch Equine Rehoming Centre

INDEPENDENT EXAMINERS' UNQUALIFIED REPORT.

Independent Examiners Report to the Trustees of The Royal Society for the Prevention of Cruelty to Animals, Kent, North - West Branch.

I report to the Trustees on my examination of the accounts of the Trust for the year ended 31st December 2019 as set out on pages 23 to 33.

Responsibilities and basis of report.

As the charity trustees of the Trust you are responsible for the preparation of the accounts in accordance with the requirements of the Charities Act 2011 ('the Act').

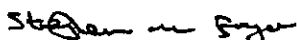
I report in respect of my examination of the Trust's accounts carried out under section 145 of the 2011 Act and in carrying out my examination I have followed all the applicable Directions given by the Charity Commission under section 145(5)(b) of the Act.

Independent examiner's statement.

I have completed my examination. I confirm that no material matters have come to my attention in connection with the examination giving me cause to believe that in any material respect:

1. accounting records were not kept in respect of the Trust as required by section 130 of the Act; or
2. the accounts do not accord with those records; or
3. the accounts do not comply with the applicable requirements concerning the form and content of accounts set out in the Charities (Accounts and Reports) Regulations 2008 other than any requirement that the accounts give a 'true and fair view' which is not a matter considered as part of an independent examination.

I have no concerns and have come across no other matters in connection with the examination to which attention should be drawn in this report in order to enable a proper understanding of the accounts to be reached.



Stephen Fryer FCA,
Hedley Dunk Limited,
Trinity House,
3 Bullace Lane,
Dartford,
Kent DA1 1BB.

ROYAL SOCIETY FOR THE PREVENTION OF CRUELTY

KENT NORTH WEST BRANCH

Registered Charity 210833

STATEMENT OF PUBLIC BENEFITS

1. The RSPCA, Kent, North West Branch is an incorporated charitable Association and a separately registered Branch of the Royal Society for the Prevention of Cruelty to Animals (the Society), carrying out its direct animal welfare work in the areas of all DA postcodes and the postcode area BR8.
2. The objects of the Branch are to promote the work and objects of the Society which is to promote kindness and to prevent or suppress cruelty to animals by all lawful means, with particular reference to the area of the Branch, in accordance with the policies of the Society.
3. The Trustees have reviewed the outcomes and achievements of our objectives and activities for the year to ensure they remain focused on our charitable aims and continue to deliver benefits to the public. We have complied with the duty under the Charities Act 2006 to have due regard to public benefit guidance published by the Charity Commission.
4. Under the Charities Act 2006, the advancement of animal welfare is recognised as a distinct statutory charitable purpose. This legislation and the Animal Welfare Act of the same year indicate an acceptance by society that treating living creatures with compassion has a moral benefit for the public as a whole. Whilst the public benefit is clear, it is sometimes difficult to quantify and must be balanced against any detriment.
5. The Branch's animal welfare work, although local in nature, benefits society at large, and also aims to help people in need with the care of their animals. The next section of this report highlights the Branch's main activities and demonstrates the benefit provided to the public. All our charitable activities as described in more detail in the following paragraphs, and the content of the Branch Annual Report, focus on promoting kindness and preventing or suppressing cruelty to animals and are undertaken to further these purposes for the public benefit.
6. The Branch supports our local Inspectors by taking in, free of charge, mistreated or abandoned animals, including pets whose owners suffer ill health or financial difficulties or pass away. The Society's Inspectorate (in addition to providing education, information, and advice) rescues animals in distress and enforces laws against cruel mistreatment of animals in England and Wales by

bringing prosecutions. This work is key to the “prevention or suppression of cruelty” part of the RSPCA objectives and promotes humane sentiments towards animals which involves moral benefit to humankind as a whole.

7. The Branch provides subsidised veterinary treatment for animals which are sick or injured and belong to local people on benefit. We do this through the services of a volunteer Branch Animal Welfare Administrator who arranges for the service to be carried out at a local veterinary clinic and agrees the level of grant that can be paid for each episode of treatment. This work benefits those on means tested benefit by giving them financial help to obtain care for companion animals in need of veterinary treatment.
8. The Branch provides subsidised neutering and microchipping of companion animals for those in the Branch area for those on low incomes. This is done by a number of methods; arrangements with local veterinary clinics; as part of specific schemes such as the Neutering of Staffordshire Terriers and the like; arrangements with a Specific scheme for the spaying of female cats (a project run jointly with Cats Protection); at catteries with whom the Branch has made specific arrangements and also through the services of the Branch Animal Welfare Administrator. This work helps control cat/dog populations through neutering and benefits those on means tested benefits by giving them financial help to neuter and microchip companion animals, thereby promoting responsible pet ownership.
9. Animals coming into the care of the Branch receive veterinary treatment and where necessary vaccinations, neutering and microchipping. This work helps to control the incidence and spread of disease and suffering through with their owners should they become lost or involved in a Road Traffic Accident.
10. Animals coming into our care that are suitable for rehoming are transferred to one of the three rehoming catteries that the Branch has made special arrangements with. These are at the Canterbury and Dover Branch, the Ashford Branch or the Hastings Branch at Bluebell Ridge. These centres rehome Branch animals after making the necessary arrangement and enquiries. Whilst the Branch does rely on other agencies to rehome Branch animals we do recognise that companion animal provide measurable benefits to people’s physical and mental health, we consider the provision of pets as subsidiary to the main charitable aim of this service, which is to reduce animal suffering. The policy to charge a reasonable adoption fee for animals aims to highlight the ongoing personal and financial commitment of pet ownership. It would not be in the best interests of animals, and therefore would fall outside of our objectives to rehome animals to those who could not afford the upkeep of them.

11. We take in, free of charge, lost animals and take steps to reunite them with their owners. This work benefits our local community (including local authorities) by preventing animals straying and posing a risk to themselves and to people through road traffic accidents.
12. The Branch responds to enquires and requests for assistance both directly through the Branch telephone helpline and the Society's Nation Call Centre. The public benefit from knowing that they can contact any part of the Branch service and the knowledge that we can intervene to assist animals in need. The Branch helpline is accessed by members of the public in Essex and other Branches throughout Kent.
13. The Branch operates two charity shops, one in Dartford and one in Gravesend. This permits the public to donate unwanted but serviceable items to the Branch in order to raise funds to support our services and also allows members of the public to purchase the donated items at reasonable and competitive prices, whilst adding to the funds that we seek to raise to meet the costs of the services we provide.
14. The shops also provide volunteering opportunities for those who wish to support our work and provides valuable insights into the world of retailing and fundraising. We also offer opportunities including, Trusteeship, fostering and fundraising, all of which benefits local people and companies by providing the possibility of doing work which is compassionate and rewarding.
15. Within the terms the terms of our governing document we support the National Society; other RSPCA Branches collaborating on matters such as care of animals, rehoming of animal and during 2018-19 made a grant to the National Society to meet the costs of an equine rehoming centre at the Leybourne Animal Centre. Members of the public benefit by the services that these services can provide

Branch Report 2019 - Inspectorate Group SE6 Kent

Chief Inspector Nick Wheelhouse
ACO Emma Byrne 8654
ACO Brian Milligan 11516
ACO Roy Jezard 9090
AWO Lynn White 6833
Inspector Dave Grant 173
Inspector Grace Harris-Bridge 15085
Inspector Clive Hopwood 16768
Inspector Tina Nash 10608
Inspector Kirsten Ormerod 16741
Inspector Rosie Russon 723
Inspector Deborah Rutherford (nee Smith) 15892

Welcome to the 2019 SE6 Kent Group annual branch report. 2019 saw lots of changes within the SE6 Kent Group, we welcomed two new Trainee Inspectors Clive Hopwood and Kirsten Ormerod. Clive and Kirsten joined the new Inspectors course in February 2019 and joined the group fulltime in September 2019. They have been invaluable and really hit the ground running. We also saw Inspector Ed Halligan move to the SE3 South East London group.

Trialing a new style of working in early 2019, working with the SE5 Sussex group, SE6 was tasked by field officers based in Sussex. This resulted in greater local knowledge and this would have a positive impact on the officers and in our ability to better manage the public's expectations whilst maintaining good animal welfare standards.

After the busy summer the group returned to tasking via the NCC in preparation for a new operating software to replace TAIL's, called Wilberforce. This also introduced a new way of working for the officers, not just a new type of software.

Effective change management training for Steve and the team, helped the officers mentally prepare for the changes that Wilberforce was bringing, as well as helping the National Call Centre transition the workload from the old system to the new. In October 2019 we went live on the new system of working. The result was that SE6 team adopted the Wilberforce way of working very well and the Wilberforce Project Team sent some very kind messages of thanks to SE6 for working so well during the training period.

Wilberforce is now fully working in Kent, and whilst there are still teething issues we as a team are continuing to work well with the NCC and neighbouring teams. New upgrades and simplification of the mobile application are due in 2020 as the RSPCA continues to invest in this important frontline work.

In SE6 we also helped rescue, collect and rehabilitate thousands more animals from situations that would have resulted in severe injury and suffering. Within Kent you have officers who specialise in exotic animal rescue and care, technical rope rescue, specialist flood rescue, Inland boat rescue, and equine rescue to name but a few. Officers in this team help coordinate team members from all over the UK and attend wherever and whenever they are needed to help rescue animals in distress.

Towards the end of 2019 Animal Welfare Officer Tina Nash temporarily left the group to join the latest Trainee Inspector course. Due to complete the course in April 2020, we are fully supportive of Tina and know she will return to the team as an excellent Inspector. WE also saw the start of Steve's countdown to retirement start at the end of 2019 and his last shift is to be the 14th February.

Without the support of the Branch networks we would simply not be as effective in rescuing animals in all sorts of predicaments. The field officers are under significant pressure and your continued patience and support is very much appreciated. Your work in supporting members of the public with funding, helping rehome unwanted animals, and caring for the sick and traumatised is to be commended. It can be a thankless task but I can assure you my team and I fully appreciate the hard work you and your teams put in. We are also very grateful to Folkestone Branch Animal Welfare Officer Lucy Smith for her continued hard work and dedication.

We wish to offer our thanks to Kent Police for their invaluable assistance in exercising their powers of entry, search, seizure and occasionally arrest of people who mistreat their animals. Our thanks also goes to Kent Fire and Rescue Service for the many occasions that they have helped with rescues of animals that have got themselves trapped or in difficulty and we have needed their equipment and manpower to resolve the situation.

Of course we have not forgotten the RSPCA animal centres that take in our animals, care for them and eventually rehome them. Our sincere thanks to the Branch catteries and kennels that board, care for and rehome our animals, usually at very short notice and at the most inconvenient times, and to the experts who care for our sick and injured wildlife until they have been rehabilitated and are able to be released back into the wild.

We are also supported by Veterinary Practices from all across Kent. The support they provide helps us bring justice for animals, and support for the sick & injured. We work with other charities such as World Horse Welfare, The British Horse Society, Folly Wildlife Hospital and numerous more. We are most grateful to them all.

Finally, on behalf of everyone in the SE6 Kent group, a big thank you to all of the Branches, members and volunteers for making us feel so welcome at your meetings and for all the difficult and invaluable work you have done throughout 2019. Without you

dedicating your time and efforts we would not be able to achieve all that we do.

During 2019 the team of 11 Officers covering Kent dealt with;

Complaints of cruelty to animals. (Jan to October 2019)

Canterbury & District - 458

Folkestone & District - 132

Isle of Sheppey - 71

Isle of Thanet - 204

Kent North West - 266

Kent West - 35

Ashford, Tenterden & District - 283

Medway West - 334

Tonbridge & Maidstone - 386

Unknown - 4

Total 2173

Collections and rescues of animals in distress.

Canterbury & District - 546

Folkestone & District - 227

Isle of Sheppey - 35

Isle of Thanet - 321

Kent North West - 232

Kent West - 20

Ashford, Tenterden & District - 223

Medway West - 347

Tonbridge & Maidstone - 307

Unknown - 9

Total 2267

Case File Investigations (Serious Breaches of animal welfare legislation) 12

We issued:

166 Animal Welfare Assessment Notices

44 Improvement Notices

All the very best for 2020

Nick Wheelhouse

RSPCA Chief Inspector 12709 - SE6 Kent Group



Chief Inspector's Annual Report - 2019

Chief Inspector Mark Miles 468

Personnel:

ACI Nick Wheelhouse
Inspector James Whipps
Inspector Liz Wheeler
Inspector Lynn Serrano
Inspector Becky Phillips
Inspector Rosie Wren
Inspector Natasha Wallis
Inspector Ed Halligan
Trainee Inspector Harriet Dalliday
ACO Kirstie Gillard
ACO Monica Faloona
ACO Joe Tambini
ACO Lisa Miller
ACO Mat Hawkins
ACO Barry Gridley
ACO Paul Taylor
ACO Jade Guthrie
ACO Tom Goldsmith

Branches covered :

London South East Branch
Croydon, Crystal Palace and District Branch
Bromley & District Branch
Purley, Caterham & District Branch
Kent North West Branch

Welcome to the 2019 Chief Inspector's report for South East London!

Last year saw some significant changes both nationally for the Society as well as within our group. In the summer we saw the rollout of the new Wilberforce tasking system, which was a big (and welcome) move away from the outdated PDAs and TAILS/MICE. It meant we would now use our work iPhones to receive jobs, and aimed to create a more streamlined way of working for the inspectorate. After some expected teething issues and an adjustment period, where we all worked together to help each other learn and adapt to the system, we found ourselves quickly taking to it. It has greatly improved our relationship with the NCC, as we now have a direct chat group with them on Hangouts where we can request callbacks and discuss jobs as they come in. We have the same dedicated taskers who have gotten to know the geography of our group very well, having routinely worked with it every day, which hugely helps as it leads to smarter tasking of closest officers.

A key benefit to the new Wilberforce system is its Now and Next feature, which sees jobs being tasked in twos, instead of a queue and backlog, as was previously the case with TAILS. This has vastly improved stress levels within the group, particularly among Inspectors, who would previously have dozens of jobs sat on their list in backlog. For ACOs, this also means jobs are prioritised better, as there is now a scale of P1 to P5, with 'P' indicating 'Priority', whereby 1 is an emergency and 5 would be a healthy animal for transfer/collection.

We had a small amount of staff moves and news within the group, with ACO Lisa Miller from SE1 swapping with ACO Jade Guthrie in October, and Inspector Rosie Wren welcoming her baby boy Jake in January. Sadly, we waved goodbye to ACO Tom Goldsmith when he went back to his original group, SE1, midway through the year.

We wish to offer our thanks to the Metropolitan Police, Kent Police and Surrey Police for their invaluable assistance in exercising their powers of entry, search, seizure and occasionally arrest of people who mistreat their animals. Our thanks also goes to London Fire Brigade and Kent Fire and Rescue Service for the many occasions that they have helped with rescues of animals that have got themselves trapped or in difficulty and we have needed their equipment and manpower to resolve the situation.

Of course we have not forgotten the RSPCA animal centres that take in our animals, care for them and eventually re-home them. Our sincere thanks to the Branch catteries and kennels that board, care for and rehome our animals, usually at very short notice and at the most inconvenient times, and to the experts who care for our sick and injured wildlife until they have been rehabilitated and are able to be released back into the wild.

Finally, on behalf of everyone in the South East London Group, a big thank you to all of the London and Kent Branches, members and volunteers for making us feel so welcome at your meetings and for all the difficult and invaluable work you have done throughout 2019 and into this year already. Without you dedicating your time and efforts we would not be able to achieve all that we do.

We hope you enjoy this newsletter where we've put together our best selection of collections, rescues and complaints from your branch areas!

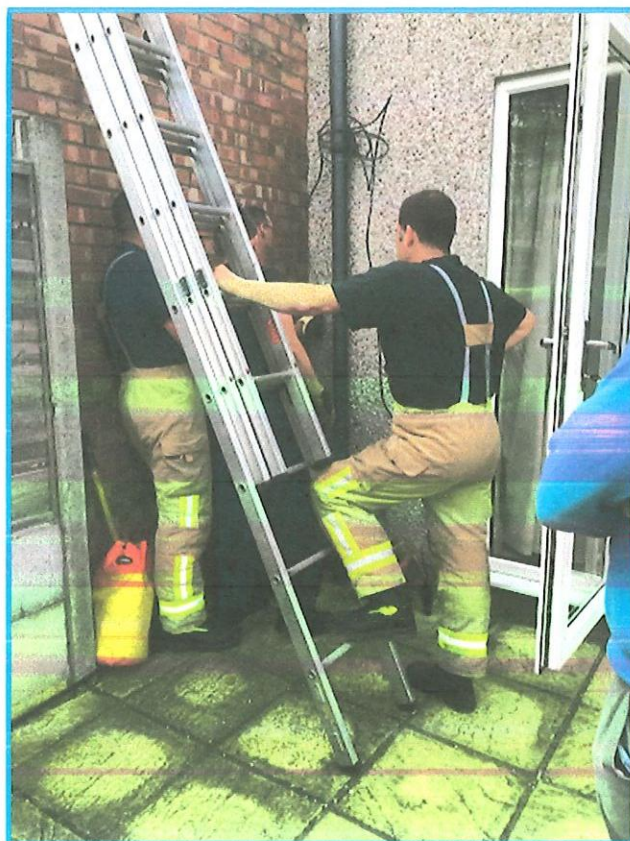
Sincerely,

SE3 Team

Kent North West Branch

Canine Catastrophe

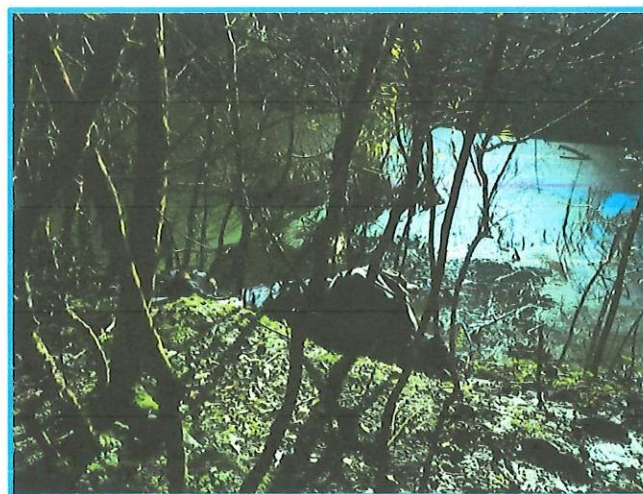
In May ACO Paul Taylor was called to a dog in Dartford who had got itself stuck in a void between 2 houses. Fire and Rescue and a vet attended in conjunction with ACO Taylor, along with the dog's owners. Paul worked hard for 4 hours to get the dog free and was eventually successful leaving one garage minus a wall... but at least the dog was safe! The dog went to the vet to be checked over.



What a Load of Pony

ACO Lisa was called to this poor horse who had found himself stuck on his side and partially in the water down a steep muddy embankment in his (inappropriate) enclosure in Belvedere. The horse was exhausted, and barely moving by the time we got there, and we then had to wait for an equine vet to attend from Lingfield to help us with tranquilising it.

The London Fire Brigade were already in attendance, but due to their own health and safety restrictions, couldn't start working on getting the horse out until it was asleep. It was a dark, muddy job but the horse,



named by the press team as 'Frosty', was eventually pulled to safety by a huge combined effort from the LFB, vet and us.

He then stood, to cheers from onlookers, and was loaded into a waiting trailer and whisked off to be safely stabled and monitored overnight.

The environment the horse was being kept in was not at all appropriate, with the steep muddy bank and no access to food or room to move. With no owner present at the rescue ACI Wheelhouse posted an abandonment notice.

The right-hand picture below is 'Frosty' the next day - he looks like a different horse!



Falling Foal of the Law

Bowie the foal here was found collapsed for two days in Dartford before Inspector Liz was called to the scene. He was full of worms and very underweight, but managed to survive somehow.

