

# Annual Report & Accounts 2019-2020



together  
we make  
a difference

Colchester & Ipswich  
 Hospitals  
Charity.

# Contents



## Welcome

4

Highlights of the year  
About us  
How we have helped patients  
Our ongoing appeals

## Strategic report

20

Our achievements and performance  
Plans for the future  
How we manage the money you give us

## Governance

24

Structure, governance and management  
Objectives of the charity

## Financial reporting

26

Statement of Corporate Trustee responsibilities  
Foreword to the financial statements  
Independent Auditor's report  
Statement of financial activities  
Balance sheet  
Statement of cash flows  
Notes to the financial statements

## Other

40

Legal and admin details  
Thank you

Colchester & Ipswich  
 Hospitals  
Charity.

### Images

Front cover: Cancer Wellbeing Centre, Colchester Hospital  
Top: Lauren Filby, paediatric consultant  
Middle: Ashley Childs skydiving  
Bottom: Dr Aruna Stannard, emergency care



# Welcome to our Annual Report

Over the next few pages, you'll be able to find out more about the fantastic work of our supporters and the huge difference their generosity is making to patients, visitors and staff at East Suffolk and North Essex NHS Foundation Trust every single day.

I would like to start by thanking everyone who has supported us so brilliantly over the past year.

The innovative ways our community has found to raise money for the charity continue to impress and inspire us, as well as underlining the affection and gratitude which local people have for their health service.

During the last 12 months, our supporters completed everything from marathons and sponsored swims to head shaves and cake sales. Two brave adventurers – East Suffolk and North Essex NHS Foundation Trust's Deputy Chief Executive Neill Moloney and cancer consultant Subash Vasudevan – even went the extra mile to scale Mount Kilimanjaro and trek to Mount Everest base camp respectively, raising nearly £8,000 between them.

The fundraising initiatives you'll read about in this report are essential to us, as Colchester & Ipswich Hospitals Charity relies entirely on donations.

We hold funds for more than 225 different wards and departments, and focus on making sure we use that money effectively, and wherever possible, in line with the wishes of our supporters.

Our aim is to make a positive difference to the people who use ESNEFT's services, and our work often sees us dedicate funding to improving the patient environment, buying specialist equipment and paying for additional staff training.

We were delighted that two of our largest projects, The Collingwood Cancer Centre and Cancer Wellbeing Centre, were completed last year at Colchester Hospital and began welcoming their first patients.



These fantastic initiatives are already making a real difference to local people. They ensure patients can receive care in a modern and calming environment, as well as any advice or support they may need from the time they are diagnosed until their treatment is complete. To find out more, please turn to page 14.

At Ipswich Hospital, we have continued to raise funds for both The Blossom Appeal, which will improve the experience for breast care patients, and The Children's Appeal, which will see the entire children's department modernised and the space transformed so it can be used more effectively. You can read more about these initiatives, and our other ongoing campaigns, on pages 18-19.

During the last financial year, we also developed our charity strategy, which is designed to make sure we continue to use your

donations to deliver the very best for patients. It links closely with East Suffolk and North Essex NHS Foundation Trust's strategy, which is to deliver the best care and experience to patients, and also adopts the Trust's philosophy – 'Time Matters' – as its basis.

As a result, our strategy outlines how we will support improvement in services which make every moment count.

To achieve this, we will consider how time matters in every aspect of our work. From the way we plan and interact with staff, patients, families and supporters, to the way we provide charitable grants and manage the procurement of goods and services.

The end of the 2019/20 year brought huge changes to all of our lives as the COVID-19 pandemic spread across the globe.

We were overwhelmed with kindness from people who were keen to support healthcare staff, and set up a specific fund to help, the COVID-19 Staff Wellbeing Fund.

All of the money raised will be spent on initiatives to boost wellbeing and mental health of staff and volunteers. For example, by creating calming oasis spaces across sites where staff can take time to relax away from the wards and clinics.

We will be prioritising these projects during the early part of 2020/21 and sharing updates on our progress through our website, social media accounts and the local media.

We hope you enjoy reading this report. If you would like more information about any aspect of our work, or would like to get involved please get in touch. We would love to hear from you.

**Mandy Jordan**  
Associate Director  
of Charities and Voluntary  
Services



Our  
philosophy:  
**Time  
Matters**

This report and accounts has been prepared in accordance with the Charities Act 2011, and Accounting and Reporting by Charities: Statement of Recommended Practice (Charities SORP FRS 102).



# Highlights of the year

We held a wide variety of fundraising events last year and celebrated some milestone moments as major projects reached completion. Here are just some of the highlights from a very memorable 12 months.

## April

Our supporters showed off their sporting prowess as five runners took on the London Marathon for our charity and Alison Powers, Director of Operations at ESNEFT, walked 140km to raise funds for the Cancer Centre Campaign.

Former breast cancer patient Kirstie Boxall chose to thank Ipswich Hospital

for the care she'd received by swimming the equivalent distance of the English Channel and back again to fundraise for The Blossom Appeal.

## May

Intrepid trio David Brady, Mat French and Tony Adams battled bad weather and blisters as they walked more than 100km over three days to raise a whopping

£7,000 for the Cancer Centre Campaign.

We joined forces with make a smile to launch our new lottery, which aims to raise £100,000 for the NHS services we support.

Green-fingered gardeners were also given the chance to showcase their pride in their perennials through our annual Open Gardens Collection, which ran all the way through the summer, until September.



## June

ESNEFT staff at Ipswich Hospital also did their bit, with specialist radiographer Lindsey Favager-Rew daring to shave her head and therapy support worker David Cranwell running 132 miles non-stop from his birthplace in Hasting back to his current home in Sproughton, Suffolk.

Supporter Mark Safier, along with friends Colin Havard and Vicki Duncan, took on the three peaks challenge to raise money for The Blossom Appeal in memory of his wife, Sharon.

delicious slice of cake during the NHS Big Tea.

There was also our annual Walk for Wards which gave families and friends the chance to enjoy the fresh air along Felixstowe sea front while raising £1,000s in sponsorship.

## July

People across east Suffolk and north east Essex raised a cuppa and tucked into a



# Highlights of our year continued



## October

Neill Moloney, ESNEFT's Deputy Chief Executive, climbed Mount Kilimanjaro to raise more than £4,000 for Children's Appeal.

Several thousand miles away in south east Asia, consultant surgeon Subash Vasudevan, who is based at Colchester Hospital, trekked to Mount Everest base

camp and raised nearly £4,000 for the Cancer Centre Campaign.

## November

Patients were warmly welcomed to the state-of-the-art Collingwood Centre following a successful five-year fundraising campaign (see page 14 for more information).



## December

The local community threw their weight behind our annual Giving Tree event, which made sure every inpatient had a present to open on Christmas Day.

The festive spirit continued at Colchester's Castle Park when the 10th annual Santa Fun Run took place with over 200 participants.

## January

New infographics were installed in the Critical Care Units at Colchester and Ipswich Hospitals to help improve visitor experience by explaining more about the equipment.

Jonathan Fieldsend pledged to match every donation given to our Eye Appeal until the end of June after having a successful partial

corneal transplant at Ipswich Hospital.

Sharlene Williamson, Capel Ward clerk, completed a mammoth five years of fundraising to buy a £7,000 bladder scanner for the ward.

## February

Hiscox Insurance completed two years of fundraising for the Neonatal Unit in Colchester, raising more

than £70,000 and funding a new specialist incubator.

## March

The holistic and innovative Cancer Wellbeing Centre opened at Colchester Hospital (see page 14 for more details) and we also launched our COVID-19 wellbeing appeal to support ESNEFT's staff and volunteers through the coronavirus pandemic.





# About us

## Our vision

To transform healthcare for our community. We will push the boundaries of possibility and make every patient experience the best it can possibly be.

## Our mission

We raise money and invest in services to enhance East Suffolk and North Essex NHS Foundation Trust’s ability to offer the best care and experience to the people they serve.

Colchester & Ipswich Hospitals Charity was formed in 2018 when The Ipswich Hospital Charity merged with Colchester Hospitals Charity.

We are proud to support East Suffolk and North Essex NHS Foundation Trust (ESNEFT), which provides hospital and community health services to around 800,000 people and in 2019/2020 was the

largest NHS organisation in the region. Charitable donations have been a huge part of health provision since before the NHS launched in 1948. In more recent years, NHS

trusts have looked to charitable donations to help develop additional services and improve the experience which their patients have while receiving care.

Our charity was established in 1995, and started out as The Ipswich Hospital NHS Trust Charitable Funds. The former Colchester Hospitals Charity was registered in 1994 and has gone through various changes over the years. Additional funds were transferred from other local hospitals in 2017 when ESNEFT was awarded a seven-year contract to run

community services across east Suffolk. We have made good progress over recent years. Our income has steadily grown and more local people are now choosing us as their charity of choice. Our work is only possible thanks to them – from holding coffee mornings, making donations and

volunteering at our events, they play a major role in improving the care and experience which ESNEFT is able to offer its patients every single day. As the number of people living in the local area increases and traditional NHS budgets continue to tighten, we need the help of our supporters and local community now more than ever before.

We provide and prioritise grants that meet our strategic objectives:

To find out more about how you could help, call 0300 770 1369 or visit [colchesteripswichcharity.org.uk](http://colchesteripswichcharity.org.uk)



### Keep people in control of their health

- Support departments to assist patients in managing their own care
- Support health promotion of physical and mental wellbeing
- Support prevention of disease and its adverse effects
- Support patients with long-term conditions
- Support equality in health which lead to better outcomes
- Support end of life care



### Lead the integration of care

- Build in the success of the Trust’s integrated teams in the community
- Manage the mental wellbeing needs of patients and colleagues
- Support people to stay at home or be discharged if they are fit to do so
- Support frail, vulnerable and older patients, preventing admissions and meeting their needs in community settings



### Develop centres of excellence

- Support care close to home, providing specialist services in the community
- Modernise facilities and equipment within the hospitals
- Improve support for young people as they transition to adult services
- Push boundaries through innovation and clinical research
- Support model of outpatients services
- Increase access to diagnostic services



### Support and develop staff

- Equip workforce with skills and resources to deliver high quality care, including providing opportunities for training, education, research and innovation
- Support staff to improve own health and wellbeing



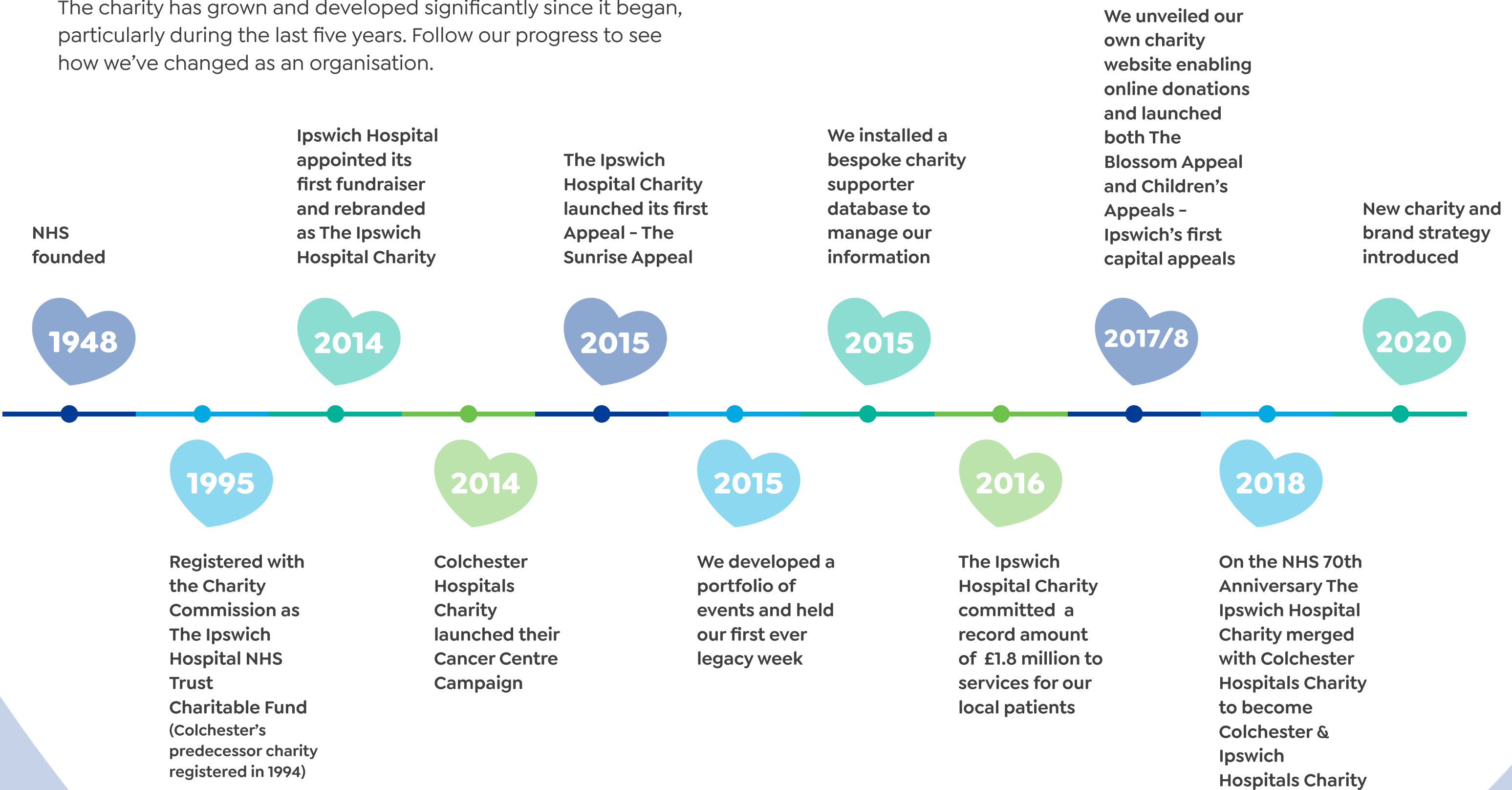
### Drive technology enabled care

- Embrace clinical technologies where they offer faster, safe and less invasive care, including wearable devices and health apps to enable patients to access care when they need it
- Use artificial intelligence to speed up processes of care or reduce errors



# Our progress timeline

The charity has grown and developed significantly since it began, particularly during the last five years. Follow our progress to see how we've changed as an organisation.





# How we helped our patients

We have revolutionised cancer care in north Essex in many ways. The Cancer Centre Campaign has ensured patients at Colchester Hospital now have first-class treatment and wellbeing centres to fulfil all their physical and emotional needs.

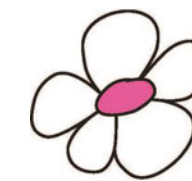
Colchester Hospital's new, state-of-the-art cancer centre opened its doors to patients in November after a successful five-year fundraising campaign. The £3.25 million development was entirely funded by the community after we launched the Cancer Centre Campaign in 2014.

The Collingwood Centre brings together radiotherapy, chemotherapy and haematology under one roof for the first time, in turn improving the experience which patients and their families and carers have when receiving treatment. It has been designed as a modern, welcoming and comfortable space and replaced the Mary Barron Suite and Haematology Day Unit.

Just four months later, in March, the Cancer Wellbeing Centre opened to begin offering counselling, support services and holistic therapies to patients and their loved ones. Built in a peaceful lakeside location close to the main hospital building, it offers a relaxed and non-clinical setting where people can get support throughout their diagnosis and treatment, as well as help adjusting to life after cancer.

Specialist information and resources, including help with benefits, complementary therapies, physical activity services, practical support and advice on diet, hair and skincare, are all available at the centre, which was built with funds raised by the charity.

A wide variety of partner organisations, including Helen Rollason Cancer Charity, Macmillan Cancer Support, Breast Cancer Now, Look Good Feel Better and Frobishers Wigs, also offer services at the centre.



The Cancer Centre Campaign  
transforming cancer care



To find out more about the centres or support us to further develop cancer wellbeing services in the future, visit [colchesteripswichcharity.org.uk/cancercentrecampaign](http://colchesteripswichcharity.org.uk/cancercentrecampaign)



# How we helped our patients continued

During the past 12 months, our charity has offered vital emotional and psychological support to ESNEFT’s patients and their loved ones by funding essential services such as counselling, therapy and family liaison.

## Butterfly Volunteer Service

In late 2019, the Butterfly Volunteer Service launched at both Colchester and Ipswich hospitals to offer comfort to patients in their last days of life. Funds raised by our supporters have allowed us to employ a coordinator for each site, who is responsible for

managing the service, recruiting volunteers and arranging training in partnership with ESNEFT’s end of life teams and the Anne Robson Trust.

The Butterfly Volunteers help dying patients, their families and friends by offering one-to-one support, a hand to hold and comfort and companionship, particularly to people who have few or no visitors. They also liaise with the ward staff to help meet any additional needs, as well as

reassuring and supporting families and carers, in turn freeing up more time for clinical staff to carry out their caring duties.

The service has been a huge success so far, with around 30 volunteers making 527 visits in its first three months – the equivalent of nearly 300 hours at the bedside. It has also received fantastic feedback, with families appreciating the support the volunteers offer at a difficult time.



## Children’s art psychotherapy scheme

We have also funded an art psychotherapy scheme for children who are living with a loved one’s cancer or have been bereaved as a result of the illness.

The sessions are run by professional, fully qualified art psychotherapists.

They provide a safe environment in which the

child or young person can express their thoughts and emotions, in turn helping them to manage difficult feelings. Clinicians, parents and schools can all make referrals, which are coordinated by hospital family support workers.

During the year, the therapists travelled to eight schools in the Ipswich area

to hold regular sessions with 10 young people.

Feedback from families and professionals alike has been extremely positive. Schools in particular have seen significant improvements in the children’s mental health and their ability to focus on learning after taking part.

# Our ongoing appeals



The Blossom Appeal aims to help build a new breast care centre which will make sure every patient who visits Ipswich Hospital for cancer treatment has the best possible experience in a modern, purpose built environment.

The new centre will bring together all elements of breast care – which are currently split between three locations around the hospital – into one place. This means that patients will be imaged, biopsied if necessary, and be able to see their clinician during just one appointment, without the need to get dressed and undressed several times.

The centre will allow ESNEFT’s teams to work more productively, in turn keeping waiting lists as short as possible. It will also provide plenty of space for staff to support anxious and emotionally vulnerable patients, as well as rooms where dedicated clinics for men and young people can take place. Welcoming and calming, the centre will be designed to the highest

standards so that the environment matches the exceptional quality of care which patients already receive.

The Blossom Appeal has captured the imagination of local people since it was launched in October 2017, with over £500,000 raised so far by former patients, families and local businesses.



We launched our Children’s Appeal in February 2018 to completely transform the experience which ESNEFT’s young patients and their families have when receiving care at Ipswich Hospital.

The appeal aims to raise funds to create a new-look, contemporary and welcoming children’s department which is fit for the 21<sup>st</sup> century and beyond. The money will be spent completely redeveloping and refurbishing the outdated 24-bed Bergholt inpatient ward, children’s outpatient department and short stay paediatric assessment unit,

as well as improving the facilities which are available. Patients and their families have helped to draw up the plans.

We were delighted that *Jimmy’s Farm* star, Jimmy Doherty, pledged his support as an ambassador in 2019 for the duration of the appeal, which has raised over £300,000 so far.



## The plans include:



Increasing outpatient clinic rooms with dedicated spaces for specialist clinics



more space in bays for specialist equipment and so that parents can stay



increasing the number of en-suite rooms



increasing the number of beds and isolation cubicles



adding Internal breakout play areas



refurbishing the outside play area



creating dedicated teenage spaces



separate outpatient and inpatient entrances

It was an easy decision for Sarina, mother-of-two, to request a double mastectomy.

Every woman in recent history on her mother’s side of the family had battled cancer. And Sarina, above all, didn’t want her two young children to see her suffer as she had done with her own mother.

Sarina went on to have reconstructive surgery following the mastectomy.

**“The staff were amazing, but they don’t have the best facilities to work in.”**



Breast surgery patient, Sarina Sargeant



# Strategic report

## Our achievements and performance

Colchester & Ipswich Hospitals Charity (East Suffolk and North Essex NHS Foundation Trust Charitable Funds) continued to support a wide range of health and welfare related activities benefiting both patients and staff.

During the year the funds were used to purchase a wide range of additional goods and services that East Suffolk and North Essex NHS Foundation Trust would otherwise be unable to provide through its normal funding i.e. additional medical equipment, training for staff, items for the benefit of staff, as well as for the benefit of patients during their stay at any of our hospital sites.

### Unrestricted funds

Unrestricted funds comprise those funds which the Corporate Trustee is free to use for any purpose to further our charitable objects.

Unrestricted funds include designated funds, where the supporter has made known their non-binding wishes or where the Corporate Trustee, at their discretion, have created a fund for a specific purpose.

The unrestricted funds have continued to support a wide range of activities, with total grants payable of £984,000 in 2019/20.

The granting of funds for the general benefit of patients and staff represents a fundamental activity of the charity, understanding the principle that even the smallest funds can enhance the service in a worthwhile way.

The generosity of our supporters has enabled the charity to make some larger grants:

- funding of four posts to drive innovation within the Trust over a two-year period (£444,419)
- two Accuvien handheld viewing systems (£9,378)
- two ECG machines (£22,038)
- clinical trials assistant for cancer research team (£22,813)
- art psychotherapy support for children (£10,500)

### Restricted funds

Restricted funds are funds which are to be used in accordance with specific restrictions imposed by the supporter. The capital of the funds may be spent at the discretion of the Corporate Trustee for the purposes stipulated by the supporter.

During 2019/20 the various restricted funds have granted a total of £2.785 million to East Suffolk and North Essex NHS Foundation Trust.

The most significant service improvements include:

- Collingwood Cancer Centre and Wellbeing Centre (£2.760 million)

### Process improvements

We continued to improve processes to drive up income and improve experiences for supporters. The use of our bespoke hospital wide charity donor database has been further developed.

Through the greater use of the database we have been able to continue building supporter records so that we can start to build a clearer picture about our supporter demographics and are able to improve our Gift Aid take up.

Our charity finance team moved the financial processing to one site during 2019, enabling greater efficiencies and increased service levels.

### Environmental scanning

The charity continues to be a member of NHS Charities Together (formerly known as Association of NHS Charities). This organisation is solely for NHS charitable organisations and helps keep the charity informed and fully updated on current and developing issues in relation to charitable funds.

Colchester & Ipswich Hospitals Charity is staying alert to legislative change. The charity is voluntarily registered with the Fundraising Regulator, demonstrating our full commitment to best practice in the sector.

### Charity strategy

A new charity strategy and brand was developed and approved for use in December 2019.

Our revised vision and mission and the areas we will prioritise supporting are set out on pages 10-11.

### Protecting vulnerable individuals

Colchester & Ipswich Hospitals Charity carries out its own fundraising activities, which are mainly event and donations driven.

During 2019, the charity also enlisted the services of St Helena Hospice to run its 'make a smile' lottery.

In line with the Fundraising Regulator Code of Practice, the charity continues to have its own fundraising promise, complaints procedure and safeguarding policy. The charity does not undertake door to door fundraising activities and limits direct marketing activities.

During the period no direct mail campaigns were carried out and email newsletters were limited to quarterly receipt.

The charity recognises that many of their supporters are elderly patients or their

families and some could therefore be vulnerable.

Where it is brought to the attention of staff that a supporter may be a vulnerable individual, confirmation is sought from safeguarding team as to their capacity to give.

The charity has no access to patient data and does not make any direct request of ESNEFT patients for donations.

Our volunteers operating on behalf of the charity are DBS checked when working within the hospital. Ad-hoc volunteers working off-site at events and accompanied by charity staff are not required to be checked.

No complaints were received by the Fundraising Regulator or Charity Commission with regard to the charity during the period.

# Strategic report

## Plans for the future

We have worked alongside our colleagues at East Suffolk and North Essex NHS Foundation Trust to choose several priorities for the coming years.

They include:

Contributing £1.5 million to help build the Breast Care Centre at Ipswich Hospital

We have raised and ring-fenced over £500,000 for this purpose and aim to raise a further £1 million over the next two years.

Contributing £850,000 to help build the new children's department at Ipswich Hospital

We have raised and ring-fenced over £289,684 for this purpose and aim to raise a further £550,000 over the next two years.

Purchasing and installing a CT scanner at a cost of £650,000 and raising a further £350,000 to contribute to the building of the new Urgent Treatment Centre at Ipswich Hospital

The additional scanner located at the front-door of the hospital will ease pressure on the Emergency Department by making sure that patients see the right clinician to meet their needs. We have ring-fenced £650,000 for the scanner, which should be in place by 2022 and aim to raise an additional £350,000 over the next two years.

Creating special wellbeing spaces for staff to take a break from wards and clinics

The wellbeing spaces will help safeguard the physical, mental and emotional health of ESNEFT staff and volunteers. These calming oases will be paid for using donations from the charity's COVID-19 Staff Wellbeing Appeal.

Purchasing virtual reality training equipment

To be used in the ICENI Centre in Colchester to help develop the skills of ESNEFT's laparoscopic (keyhole) surgeons.

Raising £55,000 to purchase an optical coherence tomography (OCT) machine

To enable staff to detect, diagnose and monitor a range of different eye diseases, including glaucoma and diabetic retinopathy using light waves to take photos of the retina. The OCT will particularly benefit babies, children, wheelchair users and those who are bed bound, who may have difficulties accessing the hospital's other eye imaging equipment.



## How we manage the money you give us

### Investment performance

During the year, the Trustees invested the Charity's funds with CCLA Investment Management Limited's COIF Charities Ethical Investment (pooled) Fund.

Overall return performance for the year 2019/20 for the charity's invested funds was 0.24%, which was down to poor investment performance due to the COVID-19 pandemic crisis. The investments were making consistent gains in the first three quarters, which offset the loss in the last quarter.

As at 31 March 2020, pooled fund assets were allocated in Equities (34.2%), Infrastructure and Operating Assets (4.5%), Property (2.8%), Private Equity, Other Assets and Cash (56.5%). CCLA's Ethical Investments return for the quarter to 31 March 2020 was equivalent or greater than the performance of an investment comparator based on a similar allocation of assets.

### Principal risks and uncertainties

Risks and associated mitigations are reported on a regular basis to the Charitable Funds Committee. There are no critical risks affecting the charity. Risks reported with mitigations include the loss of Trustee members and staff key skills, proper governance procedures and compliance with the Charities Act, publicity, and fundraising and investment strategies.

### Total fund balances

The charity is reporting a net decrease in funds of £1.981 million for the year ended 31 March 2020. This leaves total fund balances of £6.249 million compared with £8.230 million in 2018/19. It should be noted that investments are exposed to the risks of stock market fluctuations, performance will be dependent upon future economic conditions and both upward and downward swings in investment

valuations could occur. For this reason, it is the charity's policy to hold all unrealised investment revaluations in a separate fund which is not made available to spend until it is realised.

### Reserves policy

The Trustee's policy is to expend incoming resources within a reasonable period of time in furtherance of the charitable objects. Under normal circumstances, a period of three months reserves is considered to be reasonable; therefore the charity would be expected to hold reserves of £99,000 based on an average of three months of staff overheads expenditure. The reserves policy is reviewed annually.

As at 31 March 2020 the amount of uncommitted funds held was £4.795 million.



# Governance

## Structure, governance and management

The Charitable Fund is governed by Trust Deed.

In accordance with the Charity's Declaration of Trust, members of the NHS Foundation Trust's Board of Directors act as ex-officio Trustees of the Charitable Funds. The executive and non-executive members of East Suffolk and North Essex NHS Foundation Trust Board of Directors are

appointed through the normal recruitment, training and induction processes for those positions.

The Trustee, through the Charitable Funds Committee, is responsible for controlling expenditure and also for investment policy and decisions. In all decision making, consideration is given to the Charity Commission's general guidance on public benefit.

The East Suffolk and North Essex NHS Foundation Trust acts as sole Corporate Trustee to East Suffolk and North Essex NHS Foundation Trust Charitable Funds, and as such is a related party. Trustees receive an induction and training from the NHS Foundation Trust and further specific charity training is planned in 2020.

## Objectives of the charity

We have referred to the guidance contained in the Charity Commission's general guidance on public benefit when reviewing our aims and objectives and in planning our future activities.

In particular, the Trustee considers how planned activities will contribute to the aims and objectives. Our aims fully reflect the purposes that the charity was set up to further.

### Objectives and governing documents

The Charitable Funds are used to meet the objectives of the original donations or bequests

as far as is reasonably practicable in accordance with the charity's governing documents.

Where there are no specific objectives, the funds are used by the charity for such purposes relating to services provided by them under the National Health Service Act 2006 by enhancing and improving care, wellbeing and safety of patients, staff and carers within East Suffolk and North Essex NHS Foundation Trust.

The Charitable Funds Committee take account of the Charity Commission's guidance on public benefit when setting or reviewing the guidelines for fund advisors who are authorised to spend charitable funds.

Where separate restricted funds have been established the funds objectives are determined by the donor's wishes or the original fundraising proposals. The charity achieves these objectives by:

- allowing fund advisors discretion, within set limits, to purchase products or services within the normal operating remit of East Suffolk and North Essex NHS Foundation Trust
- ensuring that purchases will directly benefit patients, staff and carers
- prioritising expenditure to products and services that are over and above items normally expected to be procured by East

Suffolk and North Essex NHS Foundation Trust

### Charitable Fund objectives

East Suffolk and North Essex NHS Foundation Trust Charitable Funds

- governing document: Declaration of Trust dated 27 January 1995
- objectives: For any charitable purpose relating to the National Health Service

### Grant making policy

Grants can be made from any of the charity's funds as follows:

- firstly, from Unrestricted Funds which are constituted of donations and legacies received by the charity where no particular preference as to their expenditure has been expressed by donors or where they are designated towards a particular hospital, activity or department but not restricted to a specific purpose; these funds are used for any health related purpose throughout the hospital as per the Trust deed and subject to delegated limits laid down by the Charitable Funds Committee. Grants from unrestricted funds are also used in areas of the hospital that
- do not have restricted funds to pay for them
- secondly, Restricted Funds where a donation or legacy is restricted to a particular specific use in the hospital or activity as nominated by the donor at the time their donation or legacy was made. The Restricted Funds are overseen by the Fund Signatories who can make recommendations on how to spend the money within their designated area and financial limits; fund signatories' recommendations are accepted provided that they are in accordance with charity objectives and available funds can be spent at any time

# Financial reporting

## Statement of Corporate Trustee responsibilities

The Corporate Trustee is responsible for preparing the Trustees' Report and the Financial Statements in accordance with applicable law and regulations.

The law applicable to charities in England and Wales requires the trustees to prepare financial statements for each financial year.

Under that law the Corporate Trustee has prepared the financial statements in accordance with United Kingdom Generally Accepted Accounting Practice (SORP and applicable law). Under that law the Corporate Trustee must not approve the financial statements unless they are satisfied that they give a true and fair view of the state of the affairs of the charity and of the incoming resources and application of resources of the charity for that period.

In preparing these financial statements, the Corporate Trustee is required to:

- select suitable accounting policies and then apply them consistently
- observe the methods and principles in the Charities SORP
- make judgments and

estimates that are reasonable and prudent

- state whether applicable UK Accounting Standards have been followed, subject to any material departures disclosed and explained in the financial statements
- prepare the financial statements on the going concern basis unless it is inappropriate to presume that the charitable company will continue in business

The Corporate Trustee is responsible for keeping accounting records that are sufficient to show and explain the charity's transactions and disclose with reasonable accuracy at any time the financial position of the charity and enable them to ensure that the financial statements comply with the Charities Act 2011, the Charity (Accounts and Reports) Regulations 2008. They are also responsible for safeguarding the assets of the charity and hence for taking reasonable steps for the prevention and detection of fraud and other irregularities.

The Trustees are responsible for the maintenance and

integrity of the charity and financial information included on the charity's website.

Legislation in the United Kingdom governing the preparation and dissemination of financial statements may differ from legislation in other jurisdictions.

The financial statements on pages 30–39 are authorised for issue on behalf of the Corporate Trustee.

By order of the Trustees:

Signed:



**Helen Taylor**  
Chair

Date: 8 October 2020

## Forward to the financial statements

East Suffolk and North Essex NHS Foundation Trust Charitable Funds

The charity is a public benefit entity.

These financial statements for the year ended 31 March

2020 have been prepared by the Corporate Trustee in accordance with the Charities Act 2011, the Charity (Financial Statements and Reports) Regulations 2008, the Trust Deed, the requirements of the Statement of Recommended Practice:

Accounting and Reporting by Charities and the Financial Reporting Standard (FRS 102).

## Independent Auditor's report

### Opinion

We have audited the financial statements of Colchester and Ipswich Hospitals' Charity ("the Charity") for the year ended 31 March 2020 which comprise the Statement of Financial Activities, the Balance Sheet, the Statement of Cash Flows and notes to the financial statements, including a summary of significant accounting policies. The financial reporting framework that has been applied in their preparation is applicable law and United Kingdom Accounting Standards, including Financial Reporting Standard 102 *The Financial Reporting Standard applicable in the UK and Republic of Ireland* (United Kingdom Generally Accepted Accounting Practice).

In our opinion, the financial statements:

- give a true and fair view of the state of the Charity's affairs as at 31 March 2020 of its incoming resources and application of resources for the year then ended;
- have been properly prepared in accordance with United Kingdom Generally Accepted Accounting Practice; and
- have been prepared in accordance with the requirements of the Charities Act 2011.

### Basis for opinion

We conducted our audit in accordance with International Standards on Auditing (UK) (ISAs (UK)) and applicable law. Our responsibilities under those standards are further described in the Auditor's responsibilities for the audit

of the financial statements section of our report. We are independent of the Charity in accordance with the ethical requirements relevant to our audit of the financial statements in the UK, including the FRC's Ethical Standard, and we have fulfilled our other ethical responsibilities in accordance with these requirements. We believe that the audit evidence we have obtained is sufficient and appropriate to provide a basis for our opinion.

### Conclusions related to going concern

We have nothing to report in respect of the following matters in relation to which the ISAs (UK) require us to report to you where:

- the Corporate Trustee's use of the going concern



# Financial statements

## Independent Auditor's report *continued*

basis of accounting in the preparation of the financial statements is not appropriate; or

- the Corporate Trustee has not disclosed in the financial statements any identified material uncertainties that may cast significant doubt about the Charity's ability to continue to adopt the going concern basis of accounting for a period of at least twelve months from the date when the financial statements are authorised for issue.

### Other information

The other information comprises the information included in the Annual Report, other than the financial statements and our auditor's report thereon. The Corporate Trustee is responsible for the other information.

Our opinion on the financial statements does not cover the other information and, except to the extent otherwise explicitly stated in our report, we do not express any form of assurance conclusion thereon.

In connection with our audit of the financial statements,

our responsibility is to read the other information and, in doing so, consider whether the other information is materially inconsistent with the financial statements or our knowledge obtained in the audit or otherwise appears to be materially misstated. If we identify such material inconsistencies or apparent material misstatements, we are required to determine whether there is a material misstatement in the financial statements or a material misstatement of the other information. If, based on the work we have performed, we conclude that there is a material misstatement of this other information, we are required to report that fact.

We have nothing to report in this regard.

### Matters on which we are required to report by exception

In the light of the knowledge and understanding of the Charity and its environment obtained in the course of the audit, we have not identified material misstatement in the Strategic report or the Corporate Trustee's report.

We have nothing to report in respect of the following matters in relation to which the Companies Act 2006 requires us to report to you if, in our opinion;

- adequate accounting records have not been kept; or
- the Charity financial statements are not in agreement with the accounting records and returns; or
- we have not received all the information and explanations we require for our audit.

### Responsibilities of the Corporate Trustees

As explained more fully in the Statement of Corporate Trustee's responsibilities, the Corporate Trustee is responsible for the preparation of the financial statements and for being satisfied that they give a true and fair view, and for such internal control as the Corporate Trustee determines is necessary to enable the preparation of financial statements that are free from material misstatement, whether due to fraud or error.

In preparing the financial statements, the Corporate Trustee is responsible for assessing the Charity's ability to continue as a going concern, disclosing, as applicable, matters related to going concern and using the going concern basis of accounting unless the Corporate Trustee either intends to liquidate the Charity or to cease operations, or has no realistic alternative but to do so.

### Auditor's responsibilities for the audit of the financial statements

We have been appointed as auditor under section 149 of the Charities Act 2011 and report in accordance with the Act and relevant regulations made or having effect thereunder.

Our objectives are to obtain reasonable assurance about whether the financial statements as a whole are free from material

misstatement, whether due to fraud or error, and to issue an auditor's report that includes our opinion. Reasonable assurance is a high level of assurance, but is not a guarantee that an audit conducted in accordance with ISAs (UK) will always detect a material misstatement when it exists. Misstatements can arise from fraud or error and are considered material if, individually or in the aggregate, they could reasonably be expected to influence the economic decisions of users taken on the basis of these financial statements.

A further description of our responsibilities for the audit of the financial statements is located at the Financial Reporting Council's ("FRC's") website at: <https://www.frc.org.uk/auditorsresponsibilities>. This description forms part of our auditor's report.

### Use of our report

This report is made solely to the Charity's Corporate Trustee, as a body, in accordance with Chapter 3

of Part 16 of the Companies Act 2006. Our audit work has been undertaken so that we might state to the Charity's Corporate Trustee's those matters we are required to state to them in an auditor's report and for no other purpose. To the fullest extent permitted by law, we do not accept or assume responsibility to anyone other than the Charity and the Charity's Corporate Trustee, for our audit work, for this report, or for the opinions we have formed.



David Eagles  
(Senior Statutory Auditor)  
For and on behalf of  
BDO LLP, Statutory Auditor  
16 The Havens  
Ipswich  
IP3 9SJ

21 October 2020

BDO LLP is a limited liability partnership registered in England and Wales (with registered number OC305127).

# Financial statements

## Statement of financial activities for the year ended 31 March 2020

	Note	Restricted Funds £'000	Unrestricted Funds £'000	Year ended 31 March 2020 £'000	Year ended 31 March 2019 £'000
<b>INCOME AND ENDOWMENTS FROM:</b>					
Donations and legacies:					
Donations		711	504	1,215	4,676
Legacies	3	-	718	718	356
Grants received		18	52	70	135
Gift aid		9	8	17	-
Other trading activities:					
Fundraising events		-	-	-	1
Sponsorship and social lotteries		-	-	-	1
Investment	4	23	90	113	96
<b>Total</b>		<b>761</b>	<b>1,372</b>	<b>2,133</b>	<b>5,265</b>
<b>EXPENDITURE ON:</b>					
Raising funds:	5				
Fundraising activities		64	238	302	319
Charitable activities:	6				
Patients - welfare and amenities		497	223	720	498
Staff - welfare and amenities		38	144	182	167
Contributions to NHS		2,226	519	2,745	527
Governance costs		23	98	121	106
Grants payable	7	2	-	2	-
<b>Total</b>		<b>2,850</b>	<b>1,222</b>	<b>4,072</b>	<b>1,617</b>
Net gain/(losses) on investments	8	27	(69)	(42)	248
<b>Net income/(expenditure)</b>		<b>(2,062)</b>	<b>81</b>	<b>(1,981)</b>	<b>3,896</b>
<b>TRANSFERS BETWEEN FUNDS</b>					
Gross transfers between funds	9	195	(195)	-	-
<b>Net Movement in Funds</b>		<b>(1,867)</b>	<b>(114)</b>	<b>(1,981)</b>	<b>3,896</b>
<b>Reconciliation of Funds</b>					
Opening -total funds brought forward		2,794	5,436	8,230	4,334
<b>Total funds carried forward</b>		<b>927</b>	<b>5,322</b>	<b>6,249</b>	<b>8,230</b>

The notes on pages 33–39 form part of these accounts.

All income and expenditure is derived from continuing operations.

## Balance sheet at 31 March 2020

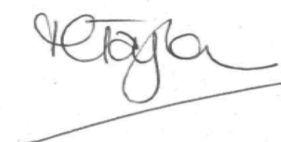
	Note	**Restricted Funds £'000	*Unrestricted Funds £'000	Total at 31 March 2020 £'000	Total at 31 March 2019 £'000
<b>Fixed Assets</b>					
Investments	8	437	2,513	2,950	2,943
<b>Total Fixed Assets</b>		<b>437</b>	<b>2,513</b>	<b>2,950</b>	<b>2,943</b>
<b>Current Assets</b>					
Debtors	11	6	99	105	238
Stock	12	-	2	2	-
Cash	13	515	3,399	3,914	5,884
<b>Total Current Assets</b>		<b>521</b>	<b>3,500</b>	<b>4,021</b>	<b>6,122</b>
<b>Liabilities</b>					
Creditors amounts falling due < 1 year	14	31	691	722	835
<b>Total Liabilities</b>		<b>31</b>	<b>691</b>	<b>722</b>	<b>835</b>
<b>Net Assets</b>		<b>927</b>	<b>5,322</b>	<b>6,249</b>	<b>8,230</b>
<b>The funds of the charity:</b>					
Restricted income funds	15	927	-	927	2,794
Unrestricted income funds		-	5,322	5,322	5,436
<b>Total Charity Funds</b>		<b>927</b>	<b>5,322</b>	<b>6,249</b>	<b>8,230</b>

\* Includes £650,000 Designated funds to UTC Scanner - see note 22

\*\* Includes £513,984 Designated funds to Blossom appeal and £289,684 to Childrens appeal - see note 22

Signed on behalf of the Corporate Trustee:

Signed:



Helen Taylor

Date: 8 October 2020

Position: Chair



# Financial statements

## Statement of cash flows for the year ended 31 March 2020

	Year ended 31 March 2020 £'000	Year ended 31 March 2019 £'000
<b>Cash flows from operating activities:</b>		
Net cash provided by operating activities	(2,005)	4,096
<b>Cash flows from investing activities:</b>		
Dividends, interest and rents from investments	35	17
Net cash provided by investing activities	35	17
Change in cash and cash equivalents in the reporting period	(1,970)	4,113
Cash and cash equivalents at the beginning of the reporting period	5,884	1,771
Cash and cash equivalents at the end of the reporting period	3,914	5,884

<b>Reconciliation of net income to net cash flows from operating activities</b>	Yea ended 31 March 2020 £'000	Year ended 31 March 2019 £'000
<b>Net income for the reporting period (as per the statement of financial activities)</b>	(1,981)	3,896
Adjusted for:		
(Gains)/losses on investments	43	(248)
Dividends and management fees from investments	(50)	(57)
Interest from bank accounts	(35)	(17)
(Increase)/decrease in debtors	133	17
Income/(decrease) in creditors	(113)	505
(Increase)/decrease in stock	(2)	-
Net cash provided by operating activities	(2,005)	4,096

<b>Analysis of cash and cash equivalents</b>	Year ended 31 March 2020 £'000	Year ended 31 March 2019 £'000
Cash in hand	603	3,194
Notice deposits (less than 3 months)	3,311	2,690
Total cash and cash equivalents	3,914	5,884

## Notes to the accounts

### 1. Accounting policies

#### 1.1 Basis of preparation

The financial statements have been prepared under the historic cost convention with items recognised at cost or transaction value unless otherwise stated in the relevant notes to these financial statements. The financial statements have been prepared in accordance with the Statement of Recommended Practice: Accounting and Reporting by Charities preparing their accounts in accordance with the Financial Reporting Standard applicable in the UK and Republic of Ireland (FRS 102) (effective 1 January 2019) and the Charities Act 2011.

The Corporate Trustee consider that there are no material uncertainties about the charity's ability to continue as a going concern.

The charity meets the definition of a public benefit entity under FRS 102.

The charity is an NHS umbrella charity created by the declaration of Trust dated 1 November 1995. The Fund is constituted by a Trust Deed and registered with the Charity Commission for England and Wales.

#### 1.2 Funds structure

**Restricted funds** are funds which are to be used in accordance with specific restrictions imposed by the donor. The capital of the funds may be spent at the discretion of the Corporate Trustee for the purposes stipulated by the donor. Restricted funds are also used to support the governance costs of the special purposes charities which hold the restricted donations.

**Unrestricted funds** comprise those funds which the Corporate Trustee is free to use for any purpose in furtherance of the charitable objects. Unrestricted funds include designated funds, where the donor has made known their non-binding wishes or where the Corporate Trustee, at their discretion, have created a fund for a specific purpose.

The split of funds held in each of these categories are disclosed in note 15.

#### 1.3 Income

All income is recognised once the Fund has entitlement to the income, it is certain that the income will be received and the monetary value of income can be measured with sufficient reliability.

Where there are terms or conditions attached to income, particularly grants, then these terms or conditions must be met before the income is recognised as the entitlement condition will not be met until that point. Where terms or conditions have not been met or uncertainty exists as to whether they can be met, then the relevant income is not recognised in the year, but deferred and shown on the balance sheet as deferred income.

#### 1.4 Legacies

Legacies are accounted for as income either upon receipt or where receipt of the legacy is probable. This is once confirmation has been received from the representatives of the estate from which the legacy will be paid or property transferred and once all conditions attached to the legacy have been fulfilled.

# Financial statements

## Notes to the accounts

### 1.5 Investment income

Investment income is apportioned to the individual funds in proportion to the average fund balance over the quarter the income relates to.

### 1.6 Expenditure

All expenditure is accounted for on an accruals basis. It is recognised once there is a legal or constructive obligation committing the charity to expenditure. Contractual arrangements are recognised as goods or services are supplied.

### 1.7 Irrecoverable VAT

Irrecoverable VAT is charged against the category of expenditure for which it was incurred.

### 1.8 Raising funds

The cost of fundraising is allocated to the funds of the charity based on the amount of income each fund generates.

### 1.9 Charitable activities

Costs of charitable activities comprise all costs incurred in the pursuit of the charitable objectives of the Fund.

### 1.10 Governance costs

Governance costs comprise all the costs incurred in the governance of the charity. These costs include the preparation and audit of the statutory accounts. These are apportioned quarterly between the funds based on each closing fund balance of the previous quarter.

### 1.11 Debtors

Debtors are amounts owed to the charity. They are measured on the basis of their recoverable amount.

### 1.12 Cash and cash equivalents

Cash at bank and in hand is held to meet the day to day running costs of the charity as they fall due. Cash equivalents are short term, highly liquid investments, usually in 90 day notice interest bearing saving accounts.

### 1.13 Creditors

Creditors are amounts owed by the charity. They are measured at the amount that the charity expects to have to pay to settle the debt.

## 2. Related party transactions

East Suffolk and North Essex NHS Foundation Trust is the sole Corporate Trustee of East Suffolk and North Essex NHS Foundation Trust Charitable Fund (also known as Colchester & Ipswich Hospitals Charity). By virtue of this relationship, the Trust is the ultimate controlling party for the charity.

East Suffolk and North Essex NHS Foundation Trust provides NHS healthcare-related services. Consolidated accounts of the Trust and charity can be obtained from Trust Offices, Colchester Hospital, Turner Road, Colchester, Essex CO4 5JL.

## Notes to the accounts

Board Members and other senior staff take decisions both on charitable funds and exchequer matters, but endeavour to keep the interests of each discrete and do not seek to benefit personally from such decisions. Declarations of personal interest have been made in both capacities and are available to be inspected by the public.

During the year none of the senior employees of the Corporate Trustee or members of the Trust's key management staff or parties related to them has undertaken any material transactions with East Suffolk and North Essex NHS Foundation Trust Charitable Fund.

None of the senior members of the Corporate Trustee or members of the Trust's senior management team, Board or parties related to them has undertaken any transactions with the East Suffolk and North Essex NHS Foundation Trust Charitable Fund or received any benefit from the Fund in payment or kind.

The Trust is a related party of the charity. The Trust made no charitable contributions to the charity. In 2019/20 the resources expended by the charity which were received by the Trust totalled £3.6m (2018/19: £1.4m). As at 31 March 2020 the Charitable Funds had a creditor balance owing to the NHS Trust of £78k.

## 3. Material legacies

Twenty five legacies were received during the 2019/20 financial year totalling £718k (31 March 2019: £356k).

## 4. Net gains/losses on investments

	Restricted Funds £'000	Unrestricted Funds £'000	Year ended 31 March 2020 £'000	Year ended 31 March 2019 £'000
Investment:				
Interest receivable	7	28	35	17
Dividends	16	62	78	79
<b>Total Investment Income</b>	<b>23</b>	<b>90</b>	<b>113</b>	<b>96</b>

## 5. Analysis of expenditure on raising funds

	Restricted Funds £'000	Unrestricted Funds £'000	Year ended 31 March 2020 £'000	Year ended 31 March 2019 £'000
Fundraising costs:				
Fundraising office	40	172	212	183
Fundraising & publicity	19	43	62	111
Investment Manager's Fees	5	23	28	22
Trading activities	-	-	-	3
<b>Total</b>	<b>64</b>	<b>238</b>	<b>302</b>	<b>319</b>

The fundraising team are employed by East Suffolk and North Essex NHS Foundation Trust. The Trust levies a monthly charge to the Charitable Fund to recover all pay and associated non-pay costs.



# Financial statements

## Notes to the accounts

### 6. Analysis of expenditure on charitable activities

	Notes	Restricted Funds £'000	Unrestricted Funds £'000	Year ended 31 March 2020 £'000	Year ended 31 March 2019 £'000
<b>Charitable activities:</b>					
Patients -welfare and amenities		497	223	720	498
Staff -welfare and amenities		38	144	182	167
Contributions to NHS					
Professional fees		55	3	58	22
Equipment		-	2	2	22
Staff		-	505	505	-
Research		-	(10)	(10)	10
Buildings		2,171	19	2,190	473
Governance costs					
Financial services		21	87	108	96
Audit fees	10	2	9	11	8
Bank fees		-	2	2	2
Grants Payable	7	2	-	2	-
<b>Total</b>		<b>2,786</b>	<b>984</b>	<b>3,770</b>	<b>1,298</b>

The Corporate Trustee operates a scheme of delegation where fund signatories of the individual funds have delegated authority to incur expenses based on the individual fund objectives in accordance with directions set out by the Corporate Trustee in standing orders and financial instructions. All requests over £5k also require approval from Charitable Funds Committee. Requests over £250k require approval from Trust Board acting in their capacity as Corporate Trustee.

### 7. Analysis of Grants

The charity granted one external award in 2019/20 at a total cost of £2,200 (2018/19 £nil). The Grant was to the aid effort of the Beria Hospital in Mozambique following their appeal for help after being flooded in 2019. Ipswich Hospital has a shared history with the Beria Hospital since 2005, when the Ipswich-Beira Health Initiative working to improve health in Mozambique was established. The original fund was setup to enable staff to support the partnership and helped fund the original construction of the hospital. This was registered as a separate charity unconnected to the Trust and was subsequently closed in January 2014. On hearing of the flooding and devastation staff wished to support the Beira Hospital again and donations were received to a separate ring-fenced designated fund within our own charity for this purpose.

The charity does not make grants to individuals.

### 8. Investments

	Restricted Funds £'000	Unrestricted Funds £'000	Total at 31 March 2020 £'000	Total at 31 March 2019 £'000
<b>Investments</b>				
Market value brought forward	999	1,944	2,943	2,638
Investment income	16	62	78	79
Investment fees	(5)	(23)	(28)	(22)
Unrealised gains/(losses)	26	(69)	(43)	248
Revaluation of funds	(598)	598	-	-
	<b>438</b>	<b>2,512</b>	<b>2,950</b>	<b>2,943</b>

## Notes to the accounts

### 9. Transfers between funds

In 2019/20 there were transfers of £195k made between funds within the group registration with the agreement of the fund signatories. Transfers are either made to move residual balances which can no longer be used effectively due to their low value, or where fund signatories have agreed to contribute to the purchase of specific equipment.

### 10. Audit costs

External audit was provided by BDO LLP (2018/19 BDO LLP) costs total £10,724 (2018/19: £7,660). These costs relate to the external audit of the financial statements.

### 11. Analysis of debtors

	Restricted Funds £'000	Unrestricted Funds £'000	Total at 31 March 2020 £'000	Total at 31 March 2019 £'000
<b>Debtors</b>				
Debtors under 1 year				
Other debtors	6	99	105	238
<b>Total Debtors</b>	<b>6</b>	<b>99</b>	<b>105</b>	<b>238</b>

There were no debtors falling due after more than one year.

### 12. Stock

	Restricted Funds £'000	Unrestricted Funds £'000	Total at 31 March 2020 £'000	Total at 31 March 2019 £'000
<b>Opening balance</b>				
Gifts in kind income	1	11	12	-
Gifts in kind expenditure	(1)	(9)	(10)	-
<b>Closing stock balance</b>	<b>-</b>	<b>2</b>	<b>2</b>	<b>-</b>

All stock was valued at the lower of cost (or gift value) and net realisable value.

### 13. Cash held on deposit

	Restricted Funds £'000	Unrestricted Funds £'000	Total at 31 March 2020 £'000	Total at 31 March 2019 £'000
<b>Cash</b>				
Cash held on deposit				
COIF charities deposit fund	491	2,820	3,311	2,690
Commercial Bank Accounts	23	579	602	3,088
Cash held in hand				
Cash in transit	1	-	1	106
<b>Total Cash</b>	<b>515</b>	<b>3,399</b>	<b>3,914</b>	<b>5,884</b>

Cash held on deposit with the COIF Charities Deposit Fund is a highly liquid pooled fund having daily deposit and withdrawal facilities.

# Financial statements

## Notes to the accounts

### 14. Analysis of creditors

	Restricted Funds £'000	Unrestricted Funds £'000	Total at 31 March 2020 £'000	Total at 31 March 2019 £'000
<b>Creditors</b>				
Creditors under 1 year				
Trade creditors	(1)	12	11	15
Accruals	13	620	633	379
Other creditors	19	59	78	441
<b>Total Creditors</b>	<b>31</b>	<b>691</b>	<b>722</b>	<b>835</b>

There were no creditors falling due after more than one year.

### 15. Analysis of funds

	Opening balance as at 1 April 2019 £'000	Incoming Resources £'000	Resources Expended £'000	Transfers between funds £'000	Net gain/(losses) on investments £'000	Closing balance as at 31 March 2020 £'000
Restricted	2,794	760	(2,849)	195	27	927
Unrestricted	5,436	1,372	(1,222)	(195)	(69)	5,322
<b>Grand Total</b>	<b>8,230</b>	<b>2,132</b>	<b>(4,071)</b>	<b>-</b>	<b>(42)</b>	<b>6,249</b>

### 16. Provisions for liabilities

There were no provisions made in the current or previous year and all approved charitable expenditure has been paid or accrued.

### 17. Loss on realisation of investments

There were no realised losses on investments for the year ended 31 March 2020 (31 March 2019: £nil).

### 18. Contingencies

There were no contingent liabilities as at 31 March 2020 (31 March 2019: £nil).

### 19. Commitments

There were no commitments at 31 March 2020 (31 March 2019: £nil).

### 20. Role of volunteers

Colchester & Ipswich Hospitals Charity has the kind support of local volunteers who actively fundraise for the charity by running or participating in events. Volunteers also support with other administrative and logistical tasks. In accordance with the Statement of Recommended Practice (Charities SORP FRS 102), due to the absence of any reliable measurement basis, the contribution of these volunteers is not recognised in the accounts.

## Notes to the accounts

### 21. Trustee and related party transactions

#### 21.1 Trustee expenses reimbursed

No expenses were reimbursed to the senior employees of the Fund's Corporate Trustee during the year (31 March 2019: £nil).

See note 2 for other related party disclosures.

#### 21.2 Trustee remuneration

None of the senior employees of the Corporate Trustee received remuneration from the Fund during the year (31 March 2019: £nil).

### 22. Notes to the accounts

The 2018/19 accounts have been re-stated due to an error in the split between the Restricted and Unrestricted accounts.

The unrestricted funds for the 2019/20 accounts include £650,000, which has been designated to go towards the purchasing and installation of a CT scanner for the new Urgent Treatment Centre at Ipswich Hospital.

The restricted funds for the 2019/20 accounts include £513,984, which has been designated to go towards the building of the Breast Care Centre at Ipswich Hospital and £289,684, which has been designated to go towards the redevelopment of the new children's department at Ipswich Hospital.



# Legal and admin details

For the year ended 30 March 2020

## Status

The charity is an NHS Charity. The organisation was established under a Declaration of Trust dated, 27 January 1995 which established the objects and powers of the organisation and amended by a Supplemental Deed on 5 July 2018.

## Trustee

East Suffolk and North Essex NHS Foundation Trust is the corporate Trustee. A list of individual members of the Trust Board can be found on the Trust website.

In accordance with the charity’s declaration of Trust, the members of the NHS Trust’s Board of Directors acted as ex-officio Trustees of the Charitable Funds. The Trustee has delegated, within the written terms of reference, day to day management of the funds to the Charitable Funds Committee. The following individuals have served on it during the year:

Richard Spencer	-	Non Executive Director and Chair
Richard Youngs	-	Non Executive Director
Eddie Bloomfield	-	Non Executive Director
Dawn Scrafield	-	Director of Finance (until September 2019)
Adrian Marr	-	Director of Finance (since September 2019)
Dr Shane Gordon	-	Director of Strategy, Research & Innovation
Catherine Morgan	-	Chief Nurse and SRO Charity (until February 2020)
Melissa Dowdeswell	-	Interim Chief Nurse (since March 2020)
Rebecca Driver*	-	Director of Communications and Engagement
Mandy Jordan*	-	Associate Director, Charities and Voluntary Services
Graeme Potts*	-	Charitable Funds Accountant
Gillian Orves*	-	Governor Representative
John Alborough*	-	Governor Representative

\* non-voting member

## Charity name and registration number

Colchester & Ipswich Hospitals Charity is registered with the Charity Commission in England & Wales as East Suffolk and North Essex NHS Foundation Trust Charitable Funds.

Charity registration number: 1048827.

## Registered office and operational address

The accounting records and day-to-day administration of the charitable funds and its related activities are dealt with by East Suffolk and North Essex NHS Foundation Trust at its registered offices:

Turner Road  
Colchester  
Essex  
CO4 5JL

Telephone  
0330 770 1369

Email  
charity@esneft.nhs.uk

## Principal Advisors

**Bankers**  
The Royal Bank of Scotland  
36 St Andrew Square  
Edinburgh EH2 2YB

**Investment Account**  
CCLA Investment Management Limited  
COIF Charity Funds  
80 Cheapside  
London EC2V 6DZ

**Investment Advisers**  
CCLA  
Senator House  
85 Queen Victoria Street  
London EC4V 4ET

**Independent Auditors**  
BDO LLP  
16 The Havens  
Ipswich IP3 9SJ

### A big thank you

The Trustee of East Suffolk and North Essex NHS Trust Charitable Funds (Colchester & Ipswich Hospitals Charity) would like to say thank you for the many generous donations from all our supporters. Without them we would be unable to support East Suffolk and North Essex NHS Foundation Trust so effectively.

together we make a difference



Registered office: Colchester Hospital, Turner Road, Colchester, CO4 5JL  
Charity teams based at Colchester and Ipswich Hospitals

0300 770 1369  
[charity@esneft.nhs.uk](mailto:charity@esneft.nhs.uk)  
[colchesteripswichcharity.org.uk](http://colchesteripswichcharity.org.uk)

Registered charity number 1048827  
© Colchester & Ipswich Hospitals Charity 2020. All rights reserved.  
Not to be reproduced in whole, or in part, without the permission of the copyright owner.

