



## Shrewsbury Street Pastors Annual Report 2019/2020

The Trustees present their annual report and financial statements for the year ended 31st March 2020. Trustees have adopted the provisions of the Charities SORP (FRS 102) 'Accounting and Reporting by Charities: Statement of Recommended Practice applicable to charities preparing their accounts in accordance with the Financial Reporting Standard applicable in the UK and Republic of Ireland (FRS 102) (effective 1 January 2019)', Financial Reporting Standard 102 'The Financial Reporting Standard applicable in the UK and Republic of Ireland' and the Charities Act 2011 in preparing the annual report and financial statements of the charity.

### **Structure, governance and management**

The charity is constituted as an unincorporated charity and is governed by its Trust Deed dated 8 August 2011. The charity was registered with the Charity Commission on 28 October 2011 and activities commenced on 12 November 2011.

The trustees are the group of people charged with the governance of the charity. No trustee had any financial interest in the charity. The charity is governed and managed by a Management Committee which meets every two months. The method of appointment of trustees is set out in the Trust Deed.

### **Objectives and activities**

The purposes of the charity are:

1.To advance education in accordance with Christian principles by such means as the Management Committee may consider appropriate in Shrewsbury and in such other parts of the United Kingdom or the world as the Management Committee may from time to time think fit and to fulfil such other purposes which are exclusively charitable according to the law of England and Wales and are connected with the charitable work of the Charity.

2.To relieve sickness and financial hardship and to promote and preserve good

health by the provision of funds, goods or services of any kind including through the provision of counselling and support in Shrewsbury and in such other parts of the United Kingdom or the world as the Management Committee may from time to time think fit.

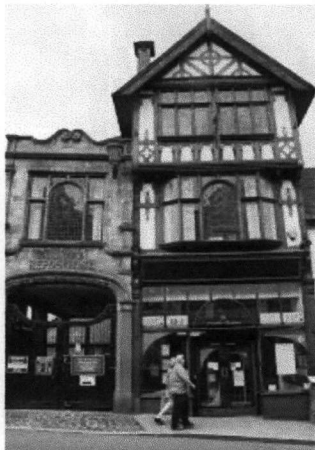
3.To advance the Christian Faith in accordance with the License Agreement executed with Ascension Trust and the Core Values and Mission.

### **Core Values**

Street Pastors embrace Christians from a range of denominations with a passion for Jesus and for the betterment of the community, who adhere to the following five core values:

- 1.The sacredness and sanctity of human life
- 2.Respect for the community
- 3.Honesty and integrity
- 4.Personal responsibility
- 5.The promotion of the growth and development of the individual to their fullest potential.

We have a suite of offices  
in what was the old  
reference library in the  
centre of Shrewsbury



#### HQ Volunteers

We now have a group of volunteers who regularly come into our offices to provide support for the workings of the charity. These volunteers are supported by the Director of Operations.

Our fund-raising activities are organised by our Friends of Shrewsbury Street Pastors Group. They arrange events such as concerts, jumble sales and raffles.

## Shrewsbury Street Pastors

**31 March 2020**

#### Working name of charity

Shrewsbury Street Pastors

#### Trustees

Pete Lawton, Chairman

Victoria Keeble,  
Secretary

Pauline Jones

Bernard Knopp

Carole Donoghue

Ivan Hacking

Dee Ploszay

#### Registered Charity

##### Number:

1144473

##### Registered Address: 1A

Castlegates, Shrewsbury,  
SY1 2AQ

##### Website:

[www.streetpastors.org.uk/locations/shrewsbury](http://www.streetpastors.org.uk/locations/shrewsbury)

##### Email address:

shrewsbury@streetpastors.org.uk

#### Independent Examiner:

D C Blofield BSc FCA  
MEWI  
Caerwyn Jones  
Chartered Accountants  
Emstrey House  
Shrewsbury Business  
Park  
Shrewsbury  
Shropshire  
SY2 6LG

#### Bankers:

The Royal Bank of  
Scotland Plc  
Drummond House  
1 Redheughs Avenue  
Edinburgh  
EH12 9JN

### **Mission Statement**

Our mission is to train volunteers drawn from Christian churches of different denominations to provide a listening ear and practical help to the socially marginalised and the needy.

We typically patrol the streets of Shrewsbury on Friday and Saturday nights and work in partnership with the police, local councils and a range of voluntary and statutory organisations in order to reach and help all those in need.

The Gospel is the reason for what we do but is not at the forefront of what we say.

We are non-judgmental and will give time and help to anyone and everyone we meet.

### **Support from local churches**

Since its formation, Shrewsbury Street Pastors has been actively supported by the following churches. This vital support is greatly appreciated.

Albert Road, Evangelical Church, Oswestry.  
All Saints and St Michael's Church, Castlefields.  
Wem Baptist Church.  
Apostolic Church, Belle Vue.

St Lawrence's Church, Church Stretton.

Barnabas Community Church, Shrewsbury.

Holy Trinity Church, Much Wenlock.

Belle Vue Methodist Church.

Bayston Hill Methodist Church

Catholic Cathedral, Shrewsbury.

St Giles & St Eata's Church, Shrewsbury.

Christ Church, Bayston Hill.

Bomere Heath Methodist Church

Church of the Holy Spirit, Harlescott.

Emmanuel Church, Harlescott.

Holy Trinity Church, Belle Vue.

Hope Church, Harlescott.

Gwalia House, Overton.

Riversway Elim Church, Harlescott.

Salvation Army, Shrewsbury.

Shelton and Oxon Christ Church, Bicton.

Shrewsbury Abbey, St Andrew's Church, Craven Arms.

St Chad's Church, Shrewsbury.

St Laurence's Church, Church Stretton.

St Peter's Church, Monkmoor.

St Thomas Church, Hanwood.

St. Winifred's RC Church, Crowmoor.

Holy Trinity Churches, Meole Brace, Shrewsbury.

United Reformed Church, Shrewsbury.

St Cuthberts Church, Clungunford.



### **Prayer support**

Prayer for the work of the Shrewsbury Street Pastors is vital, as we seek God's strength and motivation for this work, spiritual resources of grace and love, the safety and protection of the Street Pastors, financial provision for the initiative and God's guidance for its development.

Prayer support for Shrewsbury Street Pastors has been expanding. We have a Prayer Co-ordinator. Each Street Pastor volunteer has a Prayer Partner or Buddy, who pray for them regularly, especially when they are on patrol. There are also six regular Prayer Supporters, who meet together with others from time to time or pray with the team before they go out on the streets. The Prayer Pastors are also able to mentor and pray for the team members where there have been difficult or challenging incidents.

Several Churches also offer prayer for Shrewsbury Street Pastors and involve home groups, who offer support and prayers for the Town and all who work in the night time economy in Shrewsbury Town Centre.

The Shrewsbury Street Pastors are volunteers and they typically patrol the streets on a Saturday, and some Friday nights 10:30pm – 4am and the work is funded by voluntary contributions. Much of the work involves identifying vulnerable people in the vicinity of the River Severn, in collaboration with door staff at the venues and the local police.

A primary function is the protection of young adults who come from a wide catchment area to socialise in Shrewsbury's town centre. While many of Shrewsbury's venues provide a relatively safe place for people to meet, inevitably some encounter difficulty following a heady cocktail of too much alcohol, recreational drugs, high emotions and relationship difficulties. Part of the mission is to intervene before people call the emergency services, providing pre-emptive support for people in the town centre.

The service is welcomed for being direct and impartial, providing support in a non-judgmental way. Additional services include the referral of individuals with mental health issues to supporting organisations such as The Samaritans and Mind known locally as "Sanctuary". Our training includes Suicide Prevention, First Aid, Radio Training, Drugs and Alcohol, Youth Culture and Mental Health First Aid, all of this training is provided by professional specialists.

We monitor twenty rough sleepers, ensuring that The Shrewsbury Ark Day Centre for homeless people is notified when necessary and doing what we can to keep them safe.

We have a support vehicle, called the Donkey, which we use as a Safe Place to get vulnerable people off the streets. This is used alongside our walking patrols which consist of 3-6 trained volunteers, accompanied by a driver and helper on our support vehicle. Furthermore, we would like to improve the support vehicle's capabilities, using it for outreach, preventative work, and promotional activities to raise awareness of our charity's objective.

### **The work we do.**

Our teams keep an eye on everyone out at the weekends to ensure they are as safe as possible, keeping those inebriated away from the potential danger of the River Severn. We can provide water to those dehydrated, flip-flops to those who can't walk in their shoes, a space blanket to those who are cold, a sick bag so taxis will take them home, or a phone call to those who are separated from friends or family to reunite them, or lollipops to diffuse aggression. More challenging are those people who have suicide tendencies, mental health issues, or relationship problems. The teams are trained to recognise who needs professional intervention and can make referrals to Sanctuary, a partnership with MIND, Samaritans, local Neighbourhood Policing team and ourselves.

We are now writing 'Prevention Plans' to support people with additional special needs primarily mental health issues for those who the teams meet on a regular basis.

Our teams are trained to listen and be non-judgmental in their approach to everyone, helping with whatever is needed, whether it is a plaster, a tissue or a prayer if requested. We work with any of the homeless people at the weekend when all other support is unavailable. We can offer hot drinks, biscuits, blankets, a Winter Survival kit, which includes socks, a hat, gloves etc. and referral to other professional agencies if required. We carry first aid equipment with us, so we can clean wounds, supply plasters, call an ambulance if necessary or do whatever is required.



### **The practical difference we want to make?**

The River Severn runs in a loop through the centre of our town, which means all the night time venues are within two minutes' walk from a very fast flowing river prone to flooding, so keeping revellers safe, and those who are at significant risk of committing suicide is a life-threatening reality. Shrewsbury's vibrant night time economy serves a large rural area of our county. We have four universities (School of Health Sciences Staffordshire University, University Centre Shrewsbury, Harper Adams University, Telford campus of Wolverhampton University) bringing substantial numbers of young people into our town.

We have problems with individuals bringing drugs from Liverpool and The Wirral, now part of 'County Lines' influencing both our night-time economy and our more vulnerable members of our community. We also have instances of "grooming" in our town. This is not a big issue and is one that is monitored regularly by the local Community Safety Partnership.

There are increasing numbers of houses being built across the county resulting in increasing population of all age groups, including those with little local family support, making them more vulnerable to outside influences.

Shrewsbury has twice been awarded the prestigious Purple Flag award as recognition as a 'Safe Place' to party. Street Pastors was influential in achieving this award.

Unfortunately, there is no longer a night bus service in Shrewsbury, and no return transport by train after midnight so all night time party goers must rely on taxis, (which must be booked in advance) friends or family or walking to return home, often by the side of the river.

### **The strengths and opportunities we see in our community?**

All volunteers are motivated and committed to our work on the streets. Street Pastor teams are a constant factor now in town as we are out every weekend. Our local young people generally go out for the evening with friends, but they know that Shrewsbury Street Pastors are there if things get difficult and start to go wrong. We have a proven track record and we are now recognised by young people who can trust that we are there to support and help them as necessary. Young people are now proactive in finding us when they need us and will approach the door staff to call us on their radios. We have established links and reputation with all the main support agencies in the locality such as MIND, Samaritans, Police, Ambulance and Fire and Rescue services.

The door staff contact us, using their Pub-Watch radios, a recognised method of communication when they need help with issues involving alcohol, drugs, minor first aid requirements, suicide threats, mental health crisis as they know our teams are trained and able to help.

We have been awarded the Queen's Award for Voluntary Service because of our outstanding work in the local community.

Since 26<sup>th</sup> March 2020 the country has been in lockdown due to Covid 19 Pandemic. Therefore, Shrewsbury Street Pastors has stopped all work out on the streets, this has been done in line with the Government guidance for Covid 19. All our funding has come to a halt – like many local charities and the trustees have furloughed our Director of Operations.

Our Street Pastors volunteers live all over Shropshire. We have six who work in either in hospitals or care homes and they continue to work as front-line workers. Two are working with very vulnerable young people these included neglected, sexually and physically abused, trafficked and those involved in County Lines. At the moment, understandably the young

people are constantly bored with not being able to go outside due to Covid-19. One of these workers has commented that "we regularly have to put up with violence, spitting, been punched and having things thrown at us".

We have others who are heading local support groups in some of the local villages and these are helping with shopping, getting medicines and helping those who need transport to and from hospital. Over half of the Street Pastors are involved with pastoral care lists from their local churches and this involves regularly phoning vulnerable people to check that they are OK. These lists include a large number of people who have been advised by the NHS to shield and stay social isolated for twelve weeks.

We dropped off supplies of toiletries to Shrewsbury Food Bank and we are keeping in touch with Shrewsbury Ark to monitor support needs for the homeless.

We are continuously looking at ways that we can care, listen and help those who are vulnerable and in need. We are looking to set up a further support system when we all eventually are given permission to come out of isolation. Our concern, which is one that we share with Shropshire MIND and Shrewsbury Samaritans, is the almost certain increase in numbers of people who will have mental health issues once the pubs and clubs reopen.

We are currently working with Shropshire MIND and they are using the Donkey – our support vehicle to take mental health support out into the more rural parts of our county.

During the year ahead we intend to:

- Respond to issues raised by Covid 19 and to operate within current Government guidelines
- Produce a three-year business plan outlining outcomes and budgets.
- Promote "The Friends of Shrewsbury Street Pastors", which was launched on 28 November 2013. Its aim is to encourage church and non-church Shropshire people, companies and organisations, to become involved with SSP, raise regular funds and promote the initiative.
- Continue to promote SSP and raise awareness of the initiative amongst the local media, churches and other relevant organisations in Shropshire. To attend local events to have a presence and promote SSP, with a view to recruiting new volunteers and raising funds. Most of this task will invariably be carried out by the Friends of SSP volunteer group.
- Recruit more volunteers as Street Pastors and Prayer Pastors through promotion to churches throughout Shropshire. A recruitment event is being planned for the Spring 2021. This is due to current Covid 19 restrictions.
- Collaborate with other SPIs in West Mercia (there are now 7), the Midlands and Wales Regions, in training volunteers. Refresher training for existing trained volunteers is planned in 2021, and also other relevant training, such as First Aid and River Safety;
- Continue to attend meetings of Team Shrewsbury, West Mercia Police, Churches Together Shrewsbury, Pubwatch and other relevant organisations with a view to working in partnership on local initiatives, to help keep the streets of Shrewsbury safer for all who live and work in, and visit the town centre, particularly on weekend nights.
- Continue to be an active member of Team Shrewsbury.
- Continue to invite and encourage any interested persons, in particular potential recruits, to join the Street Pastors patrol as an Observer.

## SHREWSBURY STREET PASTORS ANNUAL REPORT 2019/2020

- Advise and assist other Shropshire towns, and towns within West Mercia Police area, with the setting up of an SPI in those areas.
- Look at finding a replacement of our current support vehicle to support the work of the Street Pastor foot teams.

**Church in action on the streets.**

**REPORT OF THE TRUSTEES**  
**For the year ended 31 March 2020**

**Reserves policy**

The Trustees are of the opinion that the charity should have unrestricted reserves equivalent to approximately three to six months expenditure and the charity intends to build up the free reserves and maintain them at such a level.

**Approval**

This report was approved by the board of trustees on 30.10.20 and signed on its behalf.

  
.....

**Stephen Jones**

**Director of Operations**



**INDEPENDENT EXAMINER'S REPORT TO THE MEMBERS OF  
SHREWSBURY STREET PASTORS**

**for the year ended 31 March 2020**

I report on the accounts for the year ended 31 March 2020 set out in this report.

**Respective responsibilities of trustees and examiner**

The charity's trustees are responsible for the preparation of the accounts. The charity's trustees consider that an audit is not required for this period under section 144 of the Charities Act 2011 (the Charities Act) and that an independent examination is needed.

It is my responsibility to:

- examine the accounts under section 145 of the Charities Act,
- follow the procedures laid down in the general Directions given by the Charity Commission (under section 145(5)(b) of the Charities Act), and
- state whether particular matters have come to my attention.

**Basis of independent examiner's statement**

My examination was carried out in accordance with general Directions given by the Charity Commission. An examination includes a review of the accounting records kept by the charity and a comparison of the accounts presented with those records. It also includes consideration of any unusual items or disclosures in the accounts, and seeking explanations from the trustees concerning any such matters. The procedures undertaken do not provide all the evidence that would be required in an audit, and consequently no opinion is given as to whether the accounts present a 'true and fair' view and the report is limited to those matters set out in the statement below.

**Independent examiner's statement**

In connection with my examination, no matter has come to my attention:

1. which gives me reasonable cause to believe that in, any material respect, the requirements:
  - to keep accounting records in accordance with section 130 of the Charities Act,
  - to prepare accounts which accord with the accounting records and comply with the accounting requirements of the Charities Acthave not been met: or
2. to which, in my opinion, attention should be drawn in order to enable a proper understanding of the accounts to be reached.

D C Blofield BSc FCA MEWI  
Caerwyn Jones  
Chartered Accountants  
Emstrey House  
Shrewsbury Business Park  
Shrewsbury  
Shropshire  
SY2 6LG

Signature



Date

30.10.20

**SHREWSBURY STREET PASTORS**  
**RECEIPTS AND PAYMENTS ACCOUNT**

for the year ended 31 March 2020

	Notes	Unrestricted Funds <u>2020</u> £	Unrestricted Funds <u>2019</u> £
<b>RECEIPTS</b>			
Voluntary receipts:			
Receipts from donors			
Grants from organisations		20,965	8,260
Contributions for training and uniforms		1,000	1,100
Other donations		21,824	19,907
Gift aid		1,717	882
		<u>45,506</u>	<u>30,149</u>
Investment income	2	10	6
Employment allowance		1,401	1,062
<b>Total receipts</b>		<u>46,917</u>	<u>31,217</u>
<b>PAYMENTS</b>			
Charitable activities	3	27,762	42,532
Governance costs	4	660	1,320
		<u>28,422</u>	<u>43,852</u>
<b>ASSET AND INVESTMENT PURCHASES</b>			
Fixtures, fittings and equipment		1,906	
<b>Total payments</b>		<u>30,328</u>	<u>43,852</u>
<b>CASH FUNDS BROUGHT FORWARD</b>		9,224	21,859
<b>INCREASE/(DECREASE) IN CASH FOR THE YEAR</b>		16,589	(12,635)
<b>CASH FUNDS CARRIED FORWARD</b>		<u>25,813</u>	<u>9,224</u>

**SHREWSBURY STREET PASTORS**  
**STATEMENT OF ASSETS AND LIABILITIES**  
 at 31 March 2020

	Unrestricted Funds <u>2020</u> £	Unrestricted Funds <u>2019</u> £
<b>CASH FUNDS</b>		
Bank accounts	25,775	9,195
Cash in hand	38	29
<b>Total cash funds</b>	<u>25,813</u>	<u>9,224</u>

**ASSETS RETAINED FOR THE CHARITY'S OWN  
USE**

	Unrestricted Funds <u>2020</u>	
Cost £		Current value £
<b>Fixtures, fittings and equipment</b>	<u>5,056</u>	<u>2,348</u>
<b>Vehicle</b>	<u>8,000</u>	<u>2,340</u>

Signed on behalf of the trustees:

  
 Stephen Jones

Director of Operations

Date: 30 / 10 / 20

**SHREWSBURY STREET PASTORS**

**NOTES TO THE FINANCIAL STATEMENTS**

**for the year ended 31 March 2020**

**1. Accounting policies**

**1.1 Basis of accounting**

The financial statements of the charity, which is a public benefit entity under FRS 102, have been prepared in accordance with the Charities SORP (FRS 102) 'Accounting and Reporting by Charities: Statement of Recommended Practice applicable to charities preparing their accounts in accordance with the Financial Reporting Standard applicable in the UK and Republic of Ireland (FRS 102) (effective 1 January 2019)', Financial Reporting Standard 102 'The Financial Reporting Standard applicable in the UK and Republic of Ireland' and the Charities Act 2011. The financial statements have been prepared under the historical cost convention.

**1.2 Assets retained for the charity's own use**

Assets retained for the charity's own use are stated at cost less depreciation.

Depreciation is calculated to write off the cost or valuation of fixed assets, less any residual value, over their useful lives as follows:

Fixtures, fittings and equipment - 20% on a reducing balance basis.

Vehicle - 25% on a reducing balance basis.

**2. Investment income**

	2020	2019
	£	£
Bank interest receivable	<u>10</u>	<u>6</u>

## SHREWSBURY STREET PASTORS

## NOTES TO THE FINANCIAL STATEMENTS

for the year ended 31 March 2020

## 3. Payments: Charitable activities

	Activities undertaken directly £	Support costs £	Total 2020 £	Total 2019 £
<b>Street patrols</b>				
Uniform	756		756	852
Mileage and travelling claims	28		28	390
Training and conferences	601		601	885
Consumables	1,001		1,001	402
Telephone and radio expenses	966		966	1,197
Ascension Trust licence	955		955	720
Repairs and maintenance			-	6
Postage and stationery		114	114	106
Computer consumables		206	206	222
Wages and salaries		18,150	18,150	22,982
Employer's NI		1,401	1,401	1,851
Payroll costs		150	150	180
Pension contributions		977	977	512
Pension service charges		225	225	165
Vehicle expenses	1,953		1,953	2,003
Premises costs			-	228
Insurance			-	27
Sundries		17	17	208
<b>Fundraising and publicity</b>	112		112	1,051
HOST			-	8,500
Soup hub	100		100	
Christmas Tree Festival	50		50	45
	<u>6,522</u>	<u>21,240</u>	<u>27,762</u>	<u>42,532</u>



**SHREWSBURY STREET PASTORS**

**NOTES TO THE FINANCIAL STATEMENTS**

**for the year ended 31 March 2020**

**4. Payments: Governance costs**

	<b>2020</b>	<b>2019</b>
	<b>£</b>	<b>£</b>
Accountancy	<b>660</b>	1,260
Bank charges		60
	<b><u>660</u></b>	<b><u>1,320</u></b>