



**Partnerships Overseas Networking Trust**

**2019 / 2020**

# PONT Trustees Annual Report

Charity number: 1166910



**partnerships tackling poverty together**



The trustees present their report of the charity for the period 1st April 2019 to 31st March 2020. The Financial Statements for the same period are also attached. Partnerships Overseas Networking Trust is a Charitable Incorporated Organisation registered with the Charity Commission under registration number 1166910. It more commonly uses its working name of PONT.

Prior to the CIO being registered with the Charity Commission, PONT was a registered charity under registration number 1125948. During this financial year, 1125948 was kept open to allow the transfer of assets and operations from this charity to the CIO. A separate report is available for charity 1125948, from the Charity Commission.

The trustees have adopted the provisions of the Statement of Recommended Practice (SORP) 'Accounting and Reporting by Charities' issued in March 2005

## SECTION A: ADMINISTRATIVE DETAILS

### Trustees

Dr Geoff Lloyd MRCP MRCGP, Coordinator (Chairman of Trustees)  
Geoff Herbert RIBA, Treasurer  
John Phillips LLB  
Kathryn Rickards BSc  
Howard Smith CEng MIET  
Julian Martyn Newton  
Cllr Jayne Brencher  
Marga Quince  
Richard Griffiths

### Principal Office

Cartref  
Pencerrig Street  
Graigwen  
Pontypridd  
CF37 2HS

### Bank

Lloyds Bank, Market Square, Pontypridd

### Independent Financial Examiner

LA Silver  
1 Eastcote Road  
Tiffield  
Towcester  
Northamptonshire  
NN12 8AS

## SECTION B: STRUCTURE, GOVERNANCE AND MANAGEMENT

Partnerships Overseas Networking Trust is a registered charity, number 1166910, and is constituted under a trust deed dated 2nd July 2008.

New trustees are appointed by existing trustees; there is no fixed term of service for a trustee. The trust deed requires that there shall be at least 3 trustees.

The trustees meet at least twice a year and agree policies and regulations to be used by the trust and its committees. They also perform strategic planning. All trustees give their time freely and no trustee remuneration was paid in the year. Geoff Lloyd serves as chairman of the trustees.

The trustees have appointed a Management Team and several committees to oversee the projects, grants and activities of the trust. Each committee is required to fully report its activities and proceedings to the trustees within 2 months. It shall conform to any regulations and policies that have been put in place by the trustees.

The following committees have been adopted.

Name	Area of Operation	Chair
Primary Health	Improvement of Health at community level	Dr Geoff Lloyd
Secondary Health	Linking Hospitals	Mr Peter Evans
Education	Linking Schools, supporting teachers and teaching through sharing of expertise, awareness raising	Philip Rickards
Livelihoods	Relief and Prevention of Poverty amongst children	Geoff Medlow / Jayne Brencher (joint chairs)
PONT Engineering	Engineering and Business Projects to assist communities	Howard Smith
Churches	Overseeing links between Rhondda Cynon Taf (RCT) and Mbale churches and delivering holistic mission.	Rev Peter Lewis
Environment	Promotion of sustainable living and prevention of environmental degradation.	Marga Quince
Wildlife Education Centre	Educational resource for the local schools	Dr Geoff Lloyd
Ambulance	Ambulance Response Service provision	Julian Newton
University	Mobilising the resources of Tertiary Educational Institutions	Marga Quince
Finance	Propose financial procedures and regulations to trustees. Oversee the charity's accounts.	Geoff Herbert

The majority of these committees maintain a relationship with an equivalent committee in Mbale, Uganda. They have delegated responsibility for the allocation of one or more restricted or designated funds. They arrange for monitoring and evaluation of any projects that they fund.

The Management Team has been created to undertake agreed functions with the consent of the trustees. These include:

- Management of paid staff and contractors in UK
- Preparation of bids to UK and international donors with, or on behalf of PONT committees
- Development of policy documents
- Development of administrative functions
- Co-ordination with Mbale PONT regarding staffing, funding issues and the development of procedures.

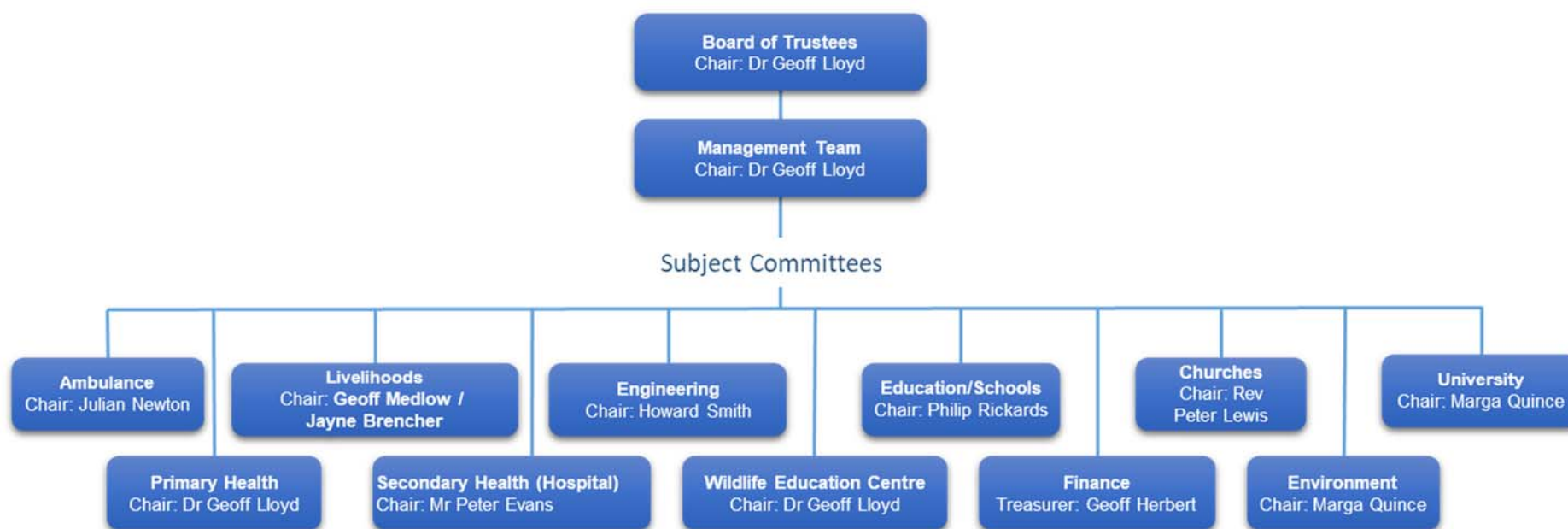
The Management Team generally meets monthly and is chaired by Dr Geoff Lloyd, PONT co-ordinator. It invites others to attend from time to time for agreed purposes.

PONT works in partnership with a number of local organisations in Mbale, Uganda to pursue its objectives. To coordinate the work that we do with NGO partners, we asked them to create an umbrella organisation Mbale-PONT which is governed by a board which has representatives from each of the member NGOs. The majority of the running costs of Mbale PONT are met by a grant from PONT UK.

PONT has also encouraged the creation of a wider body in Mbale - the Mbale Coalition Against Poverty (Mbale-CAP). Mbale-CAP has charitable status in Uganda, receiving grants for Mbale CAP running and project costs, including onward transmission of funds to support NGO partners in delivering and monitoring of projects. In addition to the NGO partners that make up Mbale-PONT this body includes representatives from the district governments of Mbale, Manafwa and Bududa. Mbale-CAP has also been able to secure funding from other organisations.

PONT is the sole owner of the company PONT Commercial Services Ltd (PONT CS), which carries on trading activities for the benefit of the charity. Surplus profits from this company are passed back to PONT. PONT CS has 3 directors: Keith Lewis, Jayne Brencher and Chris Johnes

## PONT Organisation Structure



## SECTION C: OBJECTIVES AND ACTIVITIES

The relationship between the community of Rhondda Cynon Taf (RCT) in South Wales and the community of Mbale District in eastern Uganda was started in 2005 as an initiative of the charity Pontypridd Christian Concern (PCC). PCC created a subsidiary organisation "Pontypridd Overseas Networking Trust" to foster this partnership. From the outset the aim was to add our weight to the efforts of our partners to eradicate poverty in the region. Partnerships Overseas Networking Trust was created as a separate charity in 2008 to continue this work.

The objects of the trust are defined in section 4 of the trust deed as follows:-

*The objects of the trust are to relieve sickness and financial hardship and to promote and preserve good health (both physical, spiritual and social) by the provision of funds, goods, services of any kind, including through the provision of counselling and support in such parts of Uganda or the world as the trustees from time to time may think fit particularly but not so as to limit the generality of the foregoing by means of the exchange of people, resources and ideas between the community of the County of Rhondda Cynon Taf in South East Wales and the community of Mbale, Bududa and Manafwa Districts of Eastern Uganda.*

The Trustees have formulated the following Vision and Mission statements:

---

### VISION:

To eliminate absolute poverty throughout the Mbale region of Uganda.

---

### MISSION:

To encourage, empower and resource those helping people out of poverty in the Mbale region, Uganda through a network of personal and organisational relationships whilst learning from each other and enriching one another's lives.

The activities of PONT fall into 3 categories

1. Facilitating visits by individuals and committee representatives between our 2 communities.
2. Linking of institutions and professional groups.
3. Development and grant funding of projects which contribute to the charity's aims.

## VISITS

### VISITS TO MBALE AND UK

PONT has facilitated the visit of groups from RCT to Mbale during the period and several visitors from Mbale have been hosted in RCT. These visits serve many purposes:-

1. Raising awareness of the issues facing our partner community. On return home this can then be turned in action by these individuals through advocacy, volunteering, changes in behaviour and fundraising.
2. They allow the members of PONT committees to meet face to face with their counterpart committee members in Mbale. The performance of existing projects can be reviewed and they can explore opportunities and develop plans for new projects.
3. Provide training programmes and conferences where ideas and expertise can be exchanged.
4. Linked schools and churches meet their partners, exchange ideas, plan projects and learn from each other.

### SUMMARY OF VISITS

#### Visits to Mbale from the UK

Date	Visit / Purpose	Group Size
May 2019	Eight teachers visited their partner schools in Mbale	8
Nov 2019	A medical team of 5 medics on a PHC team visit and 3 ambulance/ paramedics on an ambulance team visit. In addition, there was an engineering visit of 2 people	10
Feb 2020	A team of 3 on a WEC team visit. A team of 15 from St Denys/St Padarn's on a church team visit.	18

#### Visits from Mbale to the UK

Date	Visit / Purpose	Group Size
Aug 2019	Visit to UK by a team of 5 from Entebbe Wildlife Centre and Ugandan Wildlife authority	5
Sept/Oct 2019	Four teachers from Mbale visited their partner school in Wales. They were accompanied by the Education Coordinator for Mbale Cap, and two other members of Mbale CAP.	6

Those who make these visits are expected to raise their own funding to cover travel and living expenses so that none of the money PONT receives through individual donations or fundraising is used for this purpose. This policy applies to trustees and office holders of PONT, as well as those less closely associated with the charity. In some cases visitors are able to secure grants to cover their travel, for example some schools have received grants to allow their staff to visit partner schools.



## LINKING

### EDUCATION AND SCHOOLS

Over 100 Welsh schools have been linked with Partner Schools in Mbale including Schools catering for pupils with disabilities.

The main purpose of the partnerships is to create friendship links between schools and to:

- Extend pupils/staff's views of the world, embracing the concept of global citizenship.
- Enable pupils to learn about and respect one another's cultural differences by sharing of ideas and experiences.
- Enable intercultural dialogue, increased knowledge of one another's societies and enhance the schools' curriculums

### LIVELIHOODS

The PONT project set up to provide support for orphans and other vulnerable children (OVC), currently being delivered through boosting the incomes (livelihoods) of poorer families. This is achieved by assisting with the formation of self-help groups to provide loans for payment of school fees and materials as well as start-up funds for various income generating activities. Goat rearing is another significant part of the scheme. This is an income generating activity which can easily be managed by most families whilst also producing numerous side benefits such as milk and manure. To date over 1,000 goats have been distributed to poor families, many of which look after orphaned children of their relatives in addition to their own children.

Training for the self-help groups and goat beneficiaries and associated dedicated goat supervisors is undertaken with the aim of producing long term sustainable change. 5 local NGOs are supported to run and monitor these activities in conjunction with the Mbale CAP Livelihoods Coordinator.

### CHURCHES

The Pont church committee connects local church congregations in the Pontypridd area with congregations which are part of a Mbale Pont association of churches. This enables joint projects in welfare and mission as well as regular visits for church leaders and members in both directions.

### WILDLIFE EDUCATION CENTRE

The Wildlife Education Centre has been constructed on a small parcel of land overlooking Mbale. This contains a collection of local animals which is used to educate the PONT schools in the importance of preserving local wildlife through interactive sessions and hands on experiences. All schools in the region are invited to bring along classes to the centre free of charge.

## HEALTH

PONT-Mbale Health links aim to address Millennium Goals 4, 5 & 6 through training and mutual learning, and addressing specific challenges in access to health identified by our Mbale partners and their communities:

---

### PRIMARY CARE

PONT Primary Care Committee links with Mbale CAP Health Committee supporting Community Health Worker development and partner capacity building. GPs and other health staff contribute to training through exchange visits.

PONT-Mbale Primary Health Care aims to improve community health and uptake of preventive government health services by:

- training volunteers, forming a network of community health workers in Village Health Teams
- safeguarding sustainability by retention of volunteers' commitment and skills through ongoing update training

---

### AMBULANCE

Ambulance staff volunteers from Wales Ambulance Service Trust (WAST) link with Mbale CAP Health committee and PONT PHC in delivering Emergency skills training and development of the Integrated Emergency Response Service

PONT Ambulance team aims to help save lives by:

- supporting volunteers training in lifesaving skills
- facilitating access to skilled health care through development of an integrated call-out transport service for maternity patients and people with emergency health needs

---

### CWM TAF PONT HOSPITAL GROUP

The Royal Glamorgan Hospital in RCT is linked with the Mbale Regional Referral Hospital (RRH). The link has been in existence since 2007. The linking committee includes staff from Radiology, Endoscopy, Midwifery and A&E.

PONT-Mbale Hospital team aims to support improved care and practice throughout hospital departments and disciplines of Mbale Regional Referral Hospital (MRRH) through:

- training and exchange visits
- service development

## PROJECTS

In addition to being the catalyst for the creation of projects which result from school and church links, PONT develops and funds its own projects using the expertise and money available to it. We invite our community in Wales to donate to restricted funds that are created for each project. In addition PONT accesses grant funding for these projects. The trustees have delegated responsibility for selecting, developing and monitoring these projects to the relevant subject committee.

## EDUCATION AND SCHOOLS

### DEVELOPMENTS/PROJECTS

- Schools who are active in their partnerships are still awarded certificates and can apply for a PONT Flag
- 3 PONT schools and teachers visited Mbale in May 2019 as a result of being awarded a British Council Connecting Classrooms Reciprocal cluster grant. Total number of teachers travelling was 8
- In October 4 teachers from Mbale visited Wales as part of the same grant spending time in their partner schools.



- The Education Coordinator for Mbale Cap together with 2 other members of the Education team accompanied the teachers. During their visit they visited PONT Schools, attended meetings and get-togethers and were able to visit the Senedd in Cardiff to meet officials of the Welsh Government. They were able to present PONT Flags to 5 schools
- Regular meetings continue to be held both in Wales and Mbale with Minutes and Project Reports being shared between committees in both countries.
- Further presentations were given by members of the PONT Education team to Schools throughout Wales. These included assemblies in Secondary and Primary Schools, class presentations in Primary Schools, workshops and “Africa

Days”.

- Schools continue to share ideas on common projects with their partner schools and display evidence of their work.
- Mbale teachers continue to receive training on Communications, Special Needs Education and Examination Techniques. Their Examination Board continues to produce sample examination papers for schools to purchase.
- Books, sports kits, and other items have been donated by schools to be shipped to Mbale
- Some schools supported their partner school with monetary gifts to assist with the purchase of classroom materials, supply of electricity, footwear, sports equipment and improvement of water facilities



## CHILDREN AND VULNERABLE FAMILIES

The level of available funding for 2019/20 meant that concentration was once again on the maintenance of existing schemes. This involved monitoring and providing additional training as necessary to maintain the existing community self-help groups and goat programmes to ensure that they continue to be sustainable.

The fundraising sub-group continued to work proactively and successfully through the year and through their hard work raised more than the target for this year and this will allow the projected three year plan of funding to continue.

A small amount of funding was found to be left over from the recently completed Hyb Cymru Africa grant project and this was used to carry out some minor additional work in the groups that had been set up under the project.

Two small extra projects continued through the year – the Sikusi Primary School goat project and provision of new goats for some of the existing FDNC groups.



## CHURCHES

The PONT Churches committee has continued to encourage the 9 partnership links between churches in Mbale and South Wales. Representatives of the churches in Wales have continued to meet to share news and encourage each other, strengthening links across denominations. They have facilitated individual churches to financially support their partner church's outreach to the most vulnerable in their Mbale communities. Some examples of this include:



Bethel Baptist Church Penyrheol supported the “Bethel Girls of Hope” project, which gathers 60 girls age 11-19 who are vulnerable to early marriage, early pregnancy, abuse and missed education on two Saturdays each month, to encourage them and teach them on topics such as critical thinking, decision making, menstrual hygiene, puberty, communication skills and empowerment. Donations from friends in Wales provide a simple breakfast and lunch each time.



Temple Baptist Church Pontypridd have continued to support First Baptist Church Mbale's "Hope Ministries" in their work to address the needs of those living HIV/AIDS and young people who left education early. In 2019/20 this support was given to 50 clients and included training in honey production, dressmaking and farming. Those with HIV/AIDS received regular home visits with counselling and help with medication. The vocational training school purchased 4 additional sewing machines.

*Women tasting honey after harvest*



Namatala Church of Uganda's Tailoring School, supported by St Catherine's Church, saw two graduations of students from one of the poorest areas of Mbale, who now have a skill with which they can earn a living.

A key feature of the PONT Churches linking is regular visits to build relationships between partner churches.

February 2020 saw a visit to Mbale by a team from St Denys Church who have established a strong and meaningful link in recent years with Exodus Baptist Church, Kamonkoli. This was the third visit to Mbale for some of this team. Whilst the programme included several opportunities for ministering both within the local church and its wider community, the highlight was the leading of a Children and Family's Community Day to which over 400 children turned up! It was hard work but great fun with sketches, puppets, songs and lots of other interactive games and learning. The team also served lunch for all of those who came along.





On the same visit was a team was made up of ministers in training for ordination from St Padarn's Church in Wales Institute. This team also had a varied programme and visited several projects and schools, but their focus was on establishing links with the theology department at the Mbale campus of Uganda Christian University (UCU), and spending time speaking with people from right across Uganda who, like them, were training for ministry. It is hoped that this link between St Padarn's and UCU will flourish with plans already in hand to build on these foundations and strengthen that partnership in the years ahead.

## HEALTH - PRIMARY HEALTH CARE & AMBULANCES

In October 2019 a PHC team of 5 people and an ambulance team of 3 people travelled to Mbale to give further training to a team of Village health workers and Motorbike ambulance drivers. This took place at First Baptist Church, and involved 100 senior VHT workers.

The main thrust of the visit was to get the VHT members to start collecting data on the patients they were responsible for, with the intention of loading it onto the computer as patient specific records. This data would be used both for clinical management of the individual patients, and also to allow statistical analysis of the various parameters.

On this visit the team met with several of the District Directors of Health, and the health managers of the 8 partner NGOs that PONT works with. A scoping visit was also made to the psychiatric department of Mbale Regional Referral Hospital to consider future collaboration.



In February 2020 a follow up visit was made by Dr Geoff Lloyd, with a donation of a i-tablet to each of the 8 NGOs to start collecting the agreed data and entering it onto a computer programme especially designed for this purpose.



The village health team continue to work effectively under the management of the 8 partner NGOs.

The Motorbike ambulance are all operational, apart from which caught fire and was burned beyond repair. Under the oversight of the District Directors of Health, the number of journeys has steadily continued to increase.

## WILDLIFE EDUCATION CENTRE

The Wildlife Centre continued fully operational throughout the year, and the number of school visits and general visitors continue to gradually increase.

There were several new animals added throughout the year including 2 Ugandan Kob, a Crested Crane, 3 Egyptian Geese and 2 Barn Owls.

New enclosures were constructed for a large outdoor aviary and a large outdoor cage for the Python.



Following severe flooding in November 2020 the bridge to the bird hides was washed away, so a temporary bridge has been put back in its place with plans to build a suspension bridge as funds allow.



## PONT ENGINEERING



During the period the group worked on various projects, the key ones of which are detailed below. One two-week visit was made to Mbale by the sub group to progress and review the group's projects.

302 recorded hours of skilled professional time was contributed free of charge for the purposes of the group. A substantial number of hours of unrecorded time were also given.

During the visit to Mbale, one of the team members was taken seriously ill with a pulmonary embolism. This was probably triggered by the long outward flight. They had to be evacuated by air to a hospital in Kenya for emergency life-saving treatment. The emergency procedures of PONT, and the individual's insurance cover, worked well and were invaluable. Based on the experience, some small additions have been made to PONT's visit procedures to improve them even further.

## MECHANICAL ENGINEERING WORKSHOP IGA PROJECT

This is a mechanical engineering workshop that was set up utilising redundant machines donated and shipped to Mbale. The machines are owned by Mbale-PONT, with a separate company (PONT Uganda Ltd.), set up as a social enterprise, operating the facility utilising the machines. This is providing vocational training as well as operating as a business. Profits will augment the funds available to Mbale-PONT for poverty alleviation projects.



During the reporting period:

The business side of the workshop is getting orders, but has continued to struggle to become profitable. The training courses in machining, fabrication, welding, and car maintenance have continued to do well though.

Better second hand overalls from Cogent Power (Tata Steel) were donated to the workshop. Further advice and assistance was given to try to help the workshop business to move towards profitability.

## MOONI WATER PROJECT

This project was originally funded through Cardiff Breakfast Rotary Club, in partnership with Mbale Rotary Club and had been completed several years ago.

Further discussions took place on the possibility of PONT supporting an extension to the system.



---

## MICRO HYDRO ELECTRICITY GENERATION

The micro-hydro electricity generation project was implemented in 2014/15 at Bumayoka Primary School, mainly funded by a Welsh Government grant.

During 2019/20 the system failed due to blocked pipes again. Unsuccessful attempts to clear this were made during the engineering team visit to Mbale in Nov 2019. It is planned to rectify this during the anticipated visit in Nov 2020. This will potentially include training of the PONT Workshop in order to provide regular maintenance to reduce the likelihood of further problems, and to assist in rectifying problems more quickly when/if they do occur.

Consideration was given to abandoning the project due to the on-going problems. However, during the visit the school showed clear evidence of active engagement. Also, the project was originally intended to be a pilot and to provide learnings, so it was decided that it would be continued for the time being, though this would be kept under review.

---

## SOLAR POWER

A minor repair to the system at Lwandubi that had been completed in 2017 was effected during the engineering team visit to Mbale in Nov 2019. There seems to be a reliability issue with a particular component of the system. This will be investigated in the UK, with a view to implementing an improved solution on the next visit.

During the 2019 visit, the second stage of the project at Bulatse Primary School was completed, providing power to all the buildings. Performance of the system will be monitored and if deemed necessary a second solar panel will be installed during the 2020 visit.

The primary school at Bumatofu was visited and surveyed with a view to commencing a project there during the 2020 engineering visit, subject to funding.



The trustees confirm that they have referred to the guidance contained in the Charity Commission's general guidance on public benefit when reviewing the Trust's aims and objectives and in planning future activities.

### SECTION D: RESERVES POLICY

The PONT trustees have adopted the following reserves policy

#### **General Fund**

The annual budgets for the General Fund include the following expenditure

1. the core costs of the charity
2. the grants given to cover the core costs of Mbale PONT.

The General Fund will hold sufficient assets to cover between 6 and 9 months of these expenditures.

#### **Designated Funds**

The PONT Management Team may from time to time designate funds to be used by a committee to cover future project expenditure. Such funds must be spent within 12 months of their designation unless a longer period has been specifically authorised by the trustees.

## SECTION E: DECLARATION

### STATEMENT OF TRUSTEES RESPONSIBILITIES

The trustees are responsible for preparing the Report of the Trustees and the financial statements in accordance with applicable law and United Kingdom Generally Accepted Accounting Practice.

The law applicable to charities in England and Wales, the Charities Act 1993, Charity (Accounts and Reports) Regulations 2008 and the provisions of the trust deed requires the trustees to prepare financial statements for each financial year which give a true and fair view of the state of affairs of the charity and of the incoming resources and application of resources, including the income and expenditure, of the charity for that period. In preparing those financial statements, the trustees are required to

- select suitable accounting policies and then apply them consistently;
- observe the methods and principles in the Charity SORP;
- make judgements and estimates that are reasonable and prudent;
- prepare the financial statements on the going concern basis unless it is inappropriate to presume that the charity will continue in business

The trustees are responsible for keeping proper accounting records which disclose with reasonable accuracy at any time the financial position of the charity and to enable them to ensure that the financial statements comply with the Charities Act 1993, the Charity (Accounts and Reports) Regulations 2008 and the provisions of the trust deed. They are also responsible for safeguarding the assets of the charity and hence for taking reasonable steps for the prevention and detection of fraud and other irregularities.

The trustees declare that they have approved the trustees' report above.

Signed on behalf of the trustees on by:

Kathryn Rickards

Trustee

Geoff Lloyd

Coordinator



**Report of The Trustees And  
Unaudited Financial Statements  
For the Year  
Ended 31 March 2019  
For  
Partnership Overseas Networking Trust CIO**

	Page
Report of the trustees	1-6
Independent Examiners Report	7
Statement of Financial Activities	8
Balance Sheet	9
Notes to the Financial Statements	10-19

**PARTNERSHIP OVERSEAS NETWORKING TRUST CIO**

**REPORT OF THE TRUSTEES**

**FOR THE YEAR ENDED 31 MARCH 2020**

The trustees present their report with the financial statements of the charity for the year ended 31 March 2020. The trustees have adopted the provisions of Accounting and Reporting by Charities: Statement of Recommended Practice applicable to charities preparing their accounts in accordance with the Financial Reporting Standard applicable in the UK and Republic of Ireland (FRS 102) (effective 1 January 2015).

**OBJECTIVES AND ACTIVITIES**

**Objectives and Aims**

The relationship between the community of Rhondda Cynon Taff in South Wales and the community of Mbale District in eastern Uganda was started in 2005 as an initiative of the charity Pontypridd Christian Concern (PCC). PCC created a subsidiary organisation "Pontypridd Overseas Networking Trust" to foster this partnership. From the outset the aim was to add our weight to the efforts of our partners to eradicate poverty in the region.

The Partnerships Overseas Networking Trust CIO (Charity number 1166910) commenced its activities with effect from 1 January 2018, taking over the activities and assets from an unincorporated charity, Partnerships Overseas Networking Trust (Charity number 1125948). The charity was incorporated on the 1st of January 2018 and is governed by its trustees in accordance with its constitution dated 13th of October 2015.

**The objects of the trust as defined in section 4 of the trust deed as follows:-**

The objects of the trust are to relieve sickness and financial hardship and to promote and preserve good health (both physical, spiritual and social) by the provision of funds, goods, services of any kind, including through the provision of counselling and support in such parts of Uganda or the world as the trustees from time to time may think fit particularly but not so as to limit the generality of the foregoing by means of the exchange of people, resources and ideas between the community of the County of Rhondda Cynon Taff in South East Wales and the community of Mbale, Bududa and Manafwa Districts of Eastern Uganda.

**The Trustees have formulated the following Vision and Mission Statements**

**Vision:**

To eliminate absolute poverty throughout the Mbale region of Uganda. Mission:

To encourage, empower and resource those helping people out of poverty in the Mbale region, Uganda through a network of personal and organisational relationships whilst learning from each other and enriching one another's lives.

The activities of PONT fall into 3 categories

1. Facilitating visits by individuals and committee representatives between our 2 communities.
2. Linking of institutions and professional groups.
3. Development and grant funding of projects which contribute to the charity's aims.

The following section describe each of these in turn.

## **FINANCIAL REVIEW**

### **Reserves Policy**

The PONT trustees have adopted the following reserves policy

#### **General Fund**

The annual budgets for the General Fund include the following expenditure

1. the core costs of the charity
2. the grants given to cover the core costs of Mbale PONT.

The General Fund will hold sufficient assets to cover between 6 and 9 months of these expenditures.

At the end of the financial year the level of reserves was £85,970. However, the available funds after excluding fixed assets and restricted funds is £31,777.

#### **Designated Fund**

The PONT Steering Group may from time-to-time designate funds to be used by a committee to cover future project expenditure. Such funds must be spent within 12 months of their designation unless a longer period has been specifically authorised by the trustees.



## **STRUCTURE, GOVERNANCE AND MANAGEMENT**

### **Governing Document**

The Partnership Overseas Networking Trust is a registered Charitable Incorporated Organisation, number 1166910.

The Partnerships Overseas Networking Trust CIO (Charity number 1166910) commenced its activities with effect from 1 January 2018, taking over the activities and assets from an unincorporated charity, Partnerships Overseas Networking Trust (Charity number 1125948).

### **Recruitment and Appointment of New Trustees**

New trustees are appointed by existing trustees; there is no fixed term of service for a trustee. The trust deed requires that there shall be at least 3 trustees.

## STRUCTURE, GOVERNANCE AND MANAGEMENT

## Organisational Structure

The trustees meet at least twice a year and agree policies and regulations to be used by the trust and its committees. They also perform strategic planning. All trustees give their time freely and no trustee remuneration was paid in the year. Dr Geoff Lloyd serves as chairman of the trustees.

The trustees have appointed a steering group and several committees to oversee the projects, grants and activities of the trust. Each committee is required to fully report its activities and proceedings to the trustees within 2 months. It shall conform to any regulations and policies imposed on it by the trustees.

Dr Geoff Lloyd is the chair of the Steering Group and Marga Quince serves as minutes secretary.

The following committees have been adopted.

Name	Area of Operation	Chair
Primary Health	Improvement of Health at community level	Dr Geoff Lloyd
Secondary Health	Linking Hospitals	Dr Geoff Lloyd
Education	Schools, supporting teachers and teaching through sharing of expertise, awareness raising	Philip Rickards
Livelihoods	Relief and Prevention of Poverty amongst children	Geoff Medlow / Jayne Brencher (joint chairs)
PONT Engineering	Engineering and Business Projects to assist communities	Howard Smith
Churches	Overseeing links between Rhondda Cynon Taff (RCT) and Mbale churches and delivering holistic mission.	Rev Peter Lewis
Environment	Promotion of sustainable living and prevention of environmental degradation.	Marga Quince
Wildlife Education Centre	Educational resource for the local schools	Dr Geoff Lloyd
Ambulance	Ambulance Response Service provision	Julian Newton
University	Mobilising the resources of Tertiary Educational Institutions	Marga Quince
Finance	Propose financial procedures and regulations to trustees. Oversee the charity's accounts.	Geoff Herbert

The majority of these committees maintain a relationship with an equivalent committee in Mbale, Uganda. They have delegated responsibility for the allocation of one or more restricted or designated funds. They arrange for monitoring and evaluation of any projects that they funds.

An executive committee has been created to undertake agreed functions with the consent of the trustees, it meets weekly. The steering group meets monthly and therefore unable to effectively discharge some of the tasks which need more regular attention. As a consequence the following functions were transferred to the weekly executive committee meeting:

Management of paid staff and contractors in UK;

The preparation of bids to UK and international donors with or on behalf of PONT committees;

The development of policy documents;

The development of administrative functions;

## **STRUCTURE, GOVERNANCE AND MANAGEMENT**

### **Organisational Structure**

Co-ordination with PONT Mbale regarding staffing, funding issues and the development of procedures.

The executive committee is chaired by Dr. Geoff Lloyd, PONT co-ordinator, and includes the chair of the steering committee and the treasurer (all ex officio). It invites others to attend from time to time for agreed purposes.

### **Wider Network**

PONT works in partnership with a number of local organisations in Mbale, Uganda to pursue its objectives. To coordinate the work that we do with NGO partners we asked them to create an umbrella organisation Mbale-PONT which is governed by a board which has representatives from each of the member NGOs. The majority of the running costs of Mbale PONT are met by a grant from PONT UK. PONT has also encouraged the creation of a wider body in Mbale - the Mbale Coalition Against Poverty (Mbale-CAP). In addition to the NGO partners that make up Mbale-PONT this body includes representatives from the district governments of Mbale, Manafwa and Bududa. Mbale CAP has created a number of committees to plan and run projects. PONT provides grants to fund some of these projects. Mbale-CAP has also been able to secure funding from other organisations.

PONT is the sole owner of the company PONT Commercial Services Ltd (PONT CS), which carries on trading activities for the benefit of the charity. The subsidiary donates its taxable profits to the Charity each year by gift aid. PONT CS has 1 director: Keith Lewis.

Bank Lloyds TSB, Market Square, Pontypridd

## **REFERENCE AND ADMINISTRATIVE DETAILS**

### **Registered Charity number**

1166910

### **Principal address**

Cartref  
Pencerrig Street  
Graigwen  
Pontypridd  
CF37 2HS

### **Trustees**

Dr Geoff Lloyd MRCP MRCGP, Coordinator (Chairman of Trustees)  
Geoff Herbert RIBA, Treasurer  
John Phillips LLB  
Kathryn Rickards BSc  
Howard Smith CEng MIET  
Julian Martyn Newton  
Cllr Jayne Brencher  
Marga Quince  
Richard Griffiths

### **Independent Financial Examiner**

LA Silver  
1 Eastcote Road  
Tiffield  
Towcester  
Northamptonshire  
NN12 8AS

Approved by order of the board of trustees on 28/01/2021 and signed on its behalf by:

.....

Mr G Herbert RIBA – Trustee

## INDEPENDENT EXAMINER'S REPORT ON THE ACCOUNTS

### Accruals Accounts

Report to the trustees of Partnership Overseas Networking Trust

Registered Charity number 1166910

On the accounts for the year ended 31 March 2020

Set out on the following pages

Respective responsibilities of trustees and examiner

The charity's trustees are responsible for the preparation of the accounts. The charity's trustees consider that an audit is not required for this year (under section 144(2) of the Charities Act 2011 (the 2011 Act) and that an independent examination is needed.

It is my responsibility to:

- Examine the accounts (under section 145 of the 2022 Act;
- To follow the procedures laid down in the General Directions given by the Charity Commission (under section 145(5)(b) of the 2011 Act; and
- State whether particular matters have come to my attention.

### Basis of independent examiner's report

My examination was carried out in accordance with the General Directions given by the Charity Commissioners. An examination includes a review of the accounting records kept by the charity and a comparison of the accounts presented with those records. It also includes consideration of any unusual items or disclosures in the accounts, and seeking explanations from you as trustees concerning any such matters. The procedures undertaken do not provide all the evidence that would be required in an audit, and consequently no opinion is given as to whether the accounts a 'true and fair view' and the report is limited to those matters set out in the statement below.

### Independent examiner's statement

In connection with my examination, no matter has come to my attention:

- (1) which gives me reasonable cause to believe that in any material respect the requirements
  - to keep accounting records in accordance with section 130 of the 2011 Act; and
  - to prepare accounts which accord with the accounting records and comply with the accounting requirements of the 2011 Act

have not been met; or

- (2) to which, in my opinion, attention should be drawn in order to enable a proper understanding of the accounts to be reached.

**Signed L A Silver**

Date: 11 January 2021

Luke Silver HNC Business & Finance  
Accountancy Practitioner

1 Eastcote Road, Tiffeld, Towcester, Northamptonshire. NN12 8AS

## Partnerships Overseas Networking Trust

Statment of Financial Activities  
For the Period 1 April 2019 to 31 March 2020

		Unrestricted funds £	Restricted funds £	Year Ended 31.03.20 Total funds £	Year Ended 31.03.19 Total funds
	Notes				
<b>Incoming Resources</b>					
Voluntary income	2	47,606	118,824	<b>166,430</b>	135,677
Investment income		-		-	-
Activities for generating funds	3	670	-	<b>670</b>	3,655
<b>Total incoming resources</b>		<u>48,276</u>	<u>118,824</u>	<u><b>167,100</b></u>	<u>139,332</u>
<b>Resourcures Expended</b>					
<b>Cost of generating funds</b>					
Fundraising costs	4	3,265	-	<b>3,265</b>	1,958
<b>Charitable activities</b>					
Charitable activities	5	46,102	148,308	<b>194,410</b>	131,528
<b>Governance costs</b>	7	400	-	<b>400</b>	400
		<u>49,767</u>	<u>148,308</u>	<u><b>198,075</b></u>	<u>133,886</u>
<b>Net Incoming Resources</b>		- 1,491	- 29,484	- <b>30,975</b>	5,446
		<u>- 32,433</u>	<u>32,433</u>	<u>-</u>	<u>-</u>
		- 33,924	2,949	- <b>30,975</b>	5,446
<b>RECONCILIATION OF FUNDS</b>					
<b>Total funds brought forward</b>		65,701	51,244	<b>116,945</b>	111,499
<b>Total funds carried forward</b>		<u><u>31,777</u></u>	<u><u>54,193</u></u>	<u><u><b>85,970</b></u></u>	<u><u>116,945</u></u>

# Partnerships Overseas Networking Trust

## Balance Sheet As at 31 March 2020

Year Ended 31.03.19 Total funds	Notes	Unrestricted funds £	Restricted funds £	Year Ended 31.03.20 Total funds £
<b>Fixed Assets</b>				
	11	-	-	-
		-	-	-
<b>Current Assets</b>				
Debtors	12	18,413	37,240	55,653
Cash at bank		13,764	16,952	30,716
		32,177	54,192	86,369
<b>Current Liabilities</b>				
Creditors: amounts falling due within one year	13	(400)	-	(400)
<b>Net Current Assets</b>		31,777	54,192	85,969
<b>Net Assets</b>		31,777	54,192	85,969
<b>Funds</b>	15			
Unrestricted funds				31,777
Restricted funds				54,193
				85,970

Partnerships Overseas Networking Trust

Notes to the Financial Statements  
For the Period 1 April 2019 to 31 March 2020

Year Accounting Policies

**Basis of preparing the financial statements**

No material uncertainties that may cast significant doubt the ability of the charity to continue as a going concern have been identified by the trustees.

Therefore the financial statements have been prepared on a going concern basis.

**Accounting convention**

The financial statements have been prepared under the historic cost convention, and in accordance with the Financial Reporting Standard for Smaller Entities (effective April 2008), the Charities Act 1993 and the requirements of the Statement of Recommended Practice, Accounting and Reporting by Charities.

**Exemption from preparing a cash flow statement**

Exemption has been taken from preparing a cash flow statement on the grounds that the charity qualifies as a small charity.

**Incoming resources**

All incoming resources are included on the Statement of Financial Activities when the charity is legally entitled to the income and the amount can be quantified with reasonable accuracy.

**Resources expended**

Expenditure is accounted for on an accruals basis and has been classified under headings that aggregate all cost related to the category. Where costs cannot be directly attributed to particular headings they have been allocated to activities on a basis consistent with the use of resources.

**Cost of generating funds**

Costs of generating funds comprise those costs directly attributable to raising funds through activities.

**Other Fixed assets**

The trustees has determined to depreciate the cost of equipment at 25% of cost per annum.

**Governance costs**

Governance costs include direct and related support costs relating to the governance infrastructure allowing the charity to generate information required for public accountability.

**Taxation**

The charity is exempt from tax on its charitable activities.

**Fund accounting**

Unrestricted funds can be used in accordance with the charitable objectives at the discretion of the trustees.

Restricted funds can only be used for particular restricted purposes within the objects of the charity. Restrictions arise when specified by the donor or when funds are raised for particular restricted purposes.

Further explanation of the nature and purpose of each fund is included in the notes to the financial statements.



Partnerships Overseas Networking Trust

Notes to the Financial Statements - continued  
For the Period 1 April 2019 to 31 March 2020

	Year Ended 31.03.20 £	Year Ended 31.03.19 £
<b>2. Voluntary Income</b>		
Gifts and donations	139,103	115,294
Bequests & Legacies	-	-
Gift aid	21,823	16,383
Grants	5,504	4,000
	<u>166,430</u>	<u>135,677</u>
<b>Grants received, included in the above, are as follows:</b>		
	Year Ended 31.03.20 £	Year Ended 31.03.19 £
Welsh Assembly Government	-	4,000
THET PIP	-	-
Global Poverty Action Fund (DFID)	-	-
Good Gifts	-	-
Other	5,504	-
	<u>5,504</u>	<u>4,000</u>
<b>3. Activities for Generating Funds</b>		
	Year Ended 31.03.20 £	Year Ended 31.03.19 £
Fundraising events	670	3,655
<b>4. Investment Income</b>		
	Year Ended 31.03.20	Year Ended 31.03.19
Interest	-	-
Dividend Payments	-	4,848.00
Loan Interest	-	-
	<u>-</u>	<u>4,848</u>
<b>5. Fundraising Costs</b>		
	Year Ended 31.03.20 £	Year Ended 31.03.19 £
	3,265	1,958

## Partnerships Overseas Networking Trust

6. Direct Costs of Charitable Activities	Direct Costs (see note 6) £	Grant funding activity	Year Ended 31.03.20	Year Ended 31.03.19
			Totals £	Totals £
Charitable activities	46,221	148,189	194,410	131,073
<b>Grants and program expenditure</b>			£ 148,189	£ 103,747
Travel expenses			36,988	14,812
<b>Donations made</b>			-	-
Core Support Costs			6,018	7,938
Core Overhead Costs			3,215	4,576
			<u>194,410.00</u>	<u>131,072.00</u>
7. Grants Payable			Year Ended 31.03.20	Year Ended 31.03.19
			Totals £	Totals £
General activities			148,189.00	103,747.00

Partnerships Overseas Networking Trust

Notes to the Financial Statements - continued  
For the Period 1 April 2019 to 31 March 2020

**Analysis of Grants and Program Expenditure by Expenditure Code**

	Year Ended 31.03.20 £	Year Ended 31.03.19 £
Grants to individuals	230	-
Grants to NGO's	52,783	49,583
Direct Program Expenditure	95,176	54,164
	<u>148,189</u>	<u>103,747</u>

**Analysis of Grants and Program Expenditure by Activity**

	Year Ended 31.03.20 £	Year Ended 31.03.19 £
Total	Total	Total
is note 10/12/19		
<i>General Activities</i>		
Mbale Visitors Centre	52,561	30,622
cholera appeal	-	5,000
NGO Support	12,008	8,151
Covid Training	5,116	-
Landslide Projects	-	5,310
<i>Education Activities</i>		
School Link Funding	-	803
Education General	9,395	3,931
<i>ATEB Links</i>		
ATEB Grant	1,827	3,288
Workshop	994	455
<i>Churches</i>		
Bulatse Catholic Church	2,656	-
First Baptist Church	3,000	-
Mooni Girls of Hope	1,376	-
Kaminkilo Community Proj	1,608	-
<i>Orphan Supprt</i>		
Goats Project	8,654	4,395
<i>Health Care Projects</i>		
AMB - Bikes	20,828	18,887
PHC - General	16,666	16,386
SHC - Projects	9,844	1,734
<i>Expenditure under £2k</i>		
other activities	1,656	4,784
Total	<u>148,189</u>	<u>103,746</u>

8. **Governance Costs**

Year Ended 31.03.20 £	Year Ended 31.03.19 £
400	400

9. **Trustee's Remuneration and Benefits**

The trustees provide their services on a voluntary basis therefore there was no trustee's remuneration or other benefits for the period ended 31 March 2020.

**Trustees' Expenses**

There were no staff costs for the period ended 31 March 2020.

Partnerships Overseas Networking Trust

Notes to the Financial Statements - continued  
For the Period 1 April 2019 to 31 March 2020

10. **Staff Costs**

There were no staff costs for the year ended 31 March 2019 nor for the year ended 31 March 2020

No employees received emoluments in excess of £60,000.

11 **Tangible Fixed Assets**

	Office Equipment £
<b>Cost</b>	
Brought Forward 31 March 2019	-
Additions	-
Disposals	-
Carried Forward 31 March 2020	-
<b>Depreciation</b>	
Brought Forward 31 March 2019	-
Charge for year	-
Disposals	-
Carried Forward 31 March 2020	-
NBV 31 March 2019	-
NBV 31 March 2020	-

**Fixed Asset Investments**

<b>market Value</b>	Investments £
At 1 April 2019 and 31 March 2020	100
PONT Commercial Services Ltd	
Nature of business: Provision of work placements overseas	
Class of share:	% holding
Ordinary	100

	31/03/2020	31/03/2019
£	£	£
Aggregate capital and reserves	100.00	100.00
Profit/(loss) for the year	-	-

PONT Commercial Services Ltd is a provider of work placements overseas. The subsidiary donates its taxable profits to the Charity each year by gift aid.

Partnerships Overseas Networking Trust

Notes to the Financial Statements - continued  
For the Period 1 April 2019 to 31 March 2020

			Year Ended 31.03.20	Year Ended 31.03.19
			£	£
12. Debtors: Amounts falling Due within one Year			<u>55,653</u>	<u>134,825</u>
Gift Aid Claimed				
			Year Ended 31.03.20	Year Ended 31.03.19
			£	£
			<u>400</u>	<u>44,041</u>
			Year Ended 31.03.20	Year Ended 31.03.19
13. Creditors: Amounts falling Due within one Year			Total Funds £	Total Funds £
			1.00	1.00
			-	-
			86,369.00	161,841.00
			- 400.00	- 44,041.00
			<u>85,970.00</u>	<u>117,801.00</u>
			Year Ended 31.03.20	Year Ended 31.03.19
14. Analysis of Net Assets Between Funds	Unrestricted funds £	Restricted funds £	Total Funds £	Total Funds £
Fixed assets	1.00	-	1.00	1.00
Investments	-	-	-	-
Current Assets	55,870.00	30,499.00	86,369.00	161,841.00
Current Liabilities	- 400.00	-	- 400.00	- 44,041.00
	<u>55,471.00</u>	<u>30,499.00</u>	<u>85,970.00</u>	<u>117,801.00</u>

## Partnerships Overseas Networking Trust

Notes to the Financial Statements - continued  
For the Period 1 April 2019 to 31 March 2020

15. Movement in Funds	At 31.03.19 £	Net movement in funds £	Transfers between funds £	At 31.03.20 £
<b>Unrestricted Funds</b>				
General fund	48,385	- 1,840	- 32,297	14,248
Designated fund	17,316	349	- 136	17,529
	<u>65,701</u>	<u>- 1,491</u>	<u>- 32,433</u>	<u>31,777</u>
<b>Restricted funds</b>				
Ambulance	395	- 20,446	20,482	431
Carbon	10	-	-	10
Churches	10,612	- 3,218	853	8,247
Disaster Relief	-	-	-	-
Education	2,031	- 2,562	2,636	2,105
Engineering	4,833	2,282	- 2,640	4,475
Environmental	1,906	-	-	1,906
Health	8,037	1,401	- 8,000	1,438
Wildlife Education Centre	2,431	834	-	3,265
Livelihoods	12,625	- 3,957	-	8,668
Relief of Poverty	1	- 11,083	11,102	20
University	1,278	-	-	1,278
Primary Health	2,297	10,545	8,000	20,842
Secondary Health	4,788	- 3,280	-	1,508
	<u>51,244</u>	<u>- 29,484</u>	<u>32,433</u>	<u>54,193</u>
<b>Total Funds</b>	<u>116,945</u>	<u>- 30,975</u>	<u>-</u>	<u>85,970</u>
				116,945

## Partnerships Overseas Networking Trust

Notes to the Financial Statements - continued

For the Period 1 April 2019 to 31 March 2020

15. <b>Movement in Funds - continued</b>	Incoming resources		Resources expended		Transfer between funds		Transfer to New Charity		Movement in funds	
	£		£		£		£		£	
<b>Unrestricted Funds</b>										
	48,275	-	49,766	-	32,433		-	-	33,924	
<b>Restricted funds</b>										
Ambulance	382	-	20,828		20,482		-		36	
Carbon	-		-		-		-		-	
Churches	6,075	-	9,293		853		-	-	2,365	
Disaster Relief	-		-		-		-		-	
Education	6,839	-	9,401		2,636		-		74	
ATEB	5,106	-	2,824	-	2,640		-	-	358	
Environmental	-		-		-		-		-	
Environmental	1,401		-	-	8,000		-	-	6,599	
Mbale Visitors Centre	60,090	-	59,256		-		-		834	
orphan	4,717	-	8,674		-		-	-	3,957	
Relief of Poverty	432	-	11,515		11,102		-		19	
University	-		-		-		-		-	
Medical	33,062	-	22,517		8,000		-		18,545	
Hospital Links	720	-	4,000		-		-	-	3,280	
	118,824	-	148,308		32,433		-		2,949	
<b>Total Funds</b>	167,099	-	198,074		-		-	-	30,975	

Movement in Funds -  
15. continued

<b>Primary Health</b>	<b>Funds for Support of Primary Health Care</b> This relates to initial and ongoing training of community health workers, surveys, collection and sharing of data, project planning and associated expenditure.
<b>Livelihoods</b>	<b>Funds for use in the Livelihoods and Vulnerable Children Project (OVC)</b> This relates to the provision of goat(s) to families chosen to be part of the project, including the purchase, treatment, transport, training, support and monitoring of this project and associated expenditure.
<b>Health</b>	<b>Funds for support of Primary and Secondary Health Care</b> This relates to initial and ongoing training of community health workers, surveys, collection and sharing of data, project planning, equipment, travel, operation, feasibility studies, monitoring and associated expenditure.
<b>Education</b>	<b>Funds for use in the twinning of schools in Wales and Uganda</b> This includes training, communications, projects, visits, development of curricula, resources, mutual support and associated expenditure.
<b>Churches</b>	<b>Funds for use in the twinning of churches in Wales and Uganda</b> This includes training, communications, projects, visits, development of communities, resources, mutual support and associated expenditure.
<b>Carbon Offset</b>	<b>Funds for use in setting up and running Carbon Offsetting projects</b> This includes projects, visits, resources, support and associated expenditure.
<b>ATEB</b>	<b>Funds for use in Environmental Technology, Engineering and Business Development projects</b> This relates to agreed engineering and business projects, including feasibility, design, costing and implementation of such projects together with training, monitoring communications, visits and associated expenditure.
<b>Environment</b>	<b>Funds for use in connection with Environmental projects</b> This relates to agreed Environmental projects, including feasibility, design, costing and implementation of such projects together with training, monitoring communications, visits and associated expenditure.
<b>Ambulance Project</b>	<b>Funds for the establishment of an Ambulance Service</b> Funds for the establishment of an Ambulance type provision for patient transport of various kinds (such as cycle/motorcycle/motorised ambulance) including training, operation, communications, equipment, monitoring and associated expenditure.
<b>Secondary Health</b>	<b>Funds for development of Hospital Links between Wales and Uganda</b> This includes the provision of equipment, training, travel, operation, feasibility studies, monitoring and associated expenditure.
<b>Disaster Relief</b>	<b>Funds for responding to disaster situations in Uganda</b> Funds for responding to mudslide disaster in partnership with our local partners - ongoing response based upon monitoring of needs; feedback provided by local responses and assessments made during other visits.
<b>Partner Support</b>	<b>Funds donated for specific support to ngo's and individuals</b> Funds donated for specific support for ngo's and individuals, including training, community work and health needs.
<b>Education Fund</b>	<b>Grant aided funds for implementation of Education</b> This includes projects, visits, resources, support and associated expenditure.



<b>Community Health</b>	<b>Funds for implementation of specific pre-identified projects</b> Funds received from fund raising bodies following applications to specific projects relating to community health within the charity's overall remit [e/g Good Gifts].
<b>Relief of Poverty</b>	<b>Funds for use in connection with the Relief of Poverty in Uganda</b> This includes provision of funds to our local partners in connection with agreed projects to offset the effects of poverty, including the practical work undertaken and the monitoring and administration of such projects.
<b>Mooni Conference Centre</b>	<b>Funds for use in connection with the creation of a Training and Conference centre</b> This follows suggestions from Mbale, initially for an eco-centre to be followed by development of a visitor, training and conference facilities
<b>Wildlife Education Centre</b>	Educational resources for local schools
<b>University</b>	<b>Funds for use in connection with projects led by the University of South Wales.</b>

**16. RELATED PARTY DISCLOSURE** Sun incorporated charity, Partnerships Overseas Networking Trust (Charity number 1125948).

The Partnerships Overseas Networking Trust CIO (Charity number 1166910) commenced its activities with effect from 1 January 2018, taking over the activities and assets from an