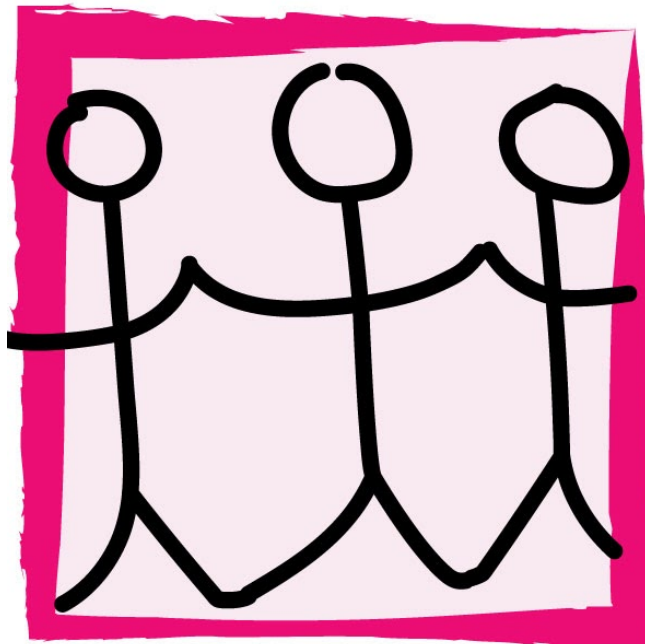




**Annual Report
Year End 2019
(31.08.19-31.08.19)**



Listen-Hear!

Registered Charity Number: 1173906

Registered Address:

c/o Beacon Academy, North Beeches Lane, Crowborough, TN6 2AS

Trustees:

Sandra Andrew

Steven Curtis

Rosemary Jones

Director:

Angela Kirby

Project Director Comment

Listen-Hear! was founded in July 2017. This year has been a busy one, working with schools to set up support services for students. The support option has been successful and has seen a number of students/families supported and also signposted to other appropriate services. We have worked closely with other agencies and forged good working relationships.

I would personally like to thank our supporters for this year Rag'N'Bone Man,& Chalk Cliff Trust. I would also like to thank our community partners, Beacon Academy, Heathfield Community College, Uplands Community College, Cranstoun Drug Services, By The Bridge and East Sussex County Council ISEND.

I look forward to what the next year has to bring.

Ange Kirby

Trustees Comments

We as trustees continue to be educated!

This year has seen the project grow and embed itself with local organisations, in particular with schools.

The work of the team has been relentless, especially as things seem to change constantly and the needs of young people and families are so varied.

The project is trying hard to be autonomous and to this end is trying to be self-sufficient, with only small amounts of funding/grant bids.

We all continue to be proud to be associated with the organisation and are looking forward to the coming year and what it may bring.....including our further education!

We would also like to join Ange and thank the supporters of the project for their efforts this year.

Steven, Rose & Sandra

Listen-Hear is a CIO founded in July 2017 and is governed by constitution.

Summary of Objects (as set out in governing document)

- To act as a resource for young people and families living in Wealden
- The promotion of social inclusion among parents and their children socially excluded from society
- To relieve the mental and physical sickness/pain of young people and parents resident in Wealden suffering from mental health issues by provision of counselling and support for such persons
- To educate young people (and parents) in matters of sexual health and develop amongst them a sense of responsibility with regard to sexual behaviour and personal relationships

Main Activities this year

- Support services to schools. 1:1 drop in sessions for students

Issues addressed have included; mental health and wellbeing, substance misuse, sexual health, family breakdown, sexuality, depression, education, behaviour, fostering, social skills, sexual health, anxiety, and budgeting.

Approximately 100 young people have been referred (in varying tiers). There have been over 1000 1:1 sessions carried out during the year.

The team delivered services across 4 Secondary Schools and 3 Primaries

Two workshops were run and completed by 10 young people. The first was on anxiety the second a social skills workshop. Feedback was positive from both the school and students.

- Parent support services

Advocacy support for parents in formal settings such as school meetings, education for parents around all of the issues above, 1:1 support sessions, parenting support work, signposting to services.

Approximately 25 families have been supported with over 70 sessions carried out. Families have also been supported with foodbank vouchers and hardship help

Financial Statement

(Reserve prior to gaining charitable status £10,000 on loan basis, with further £20,000 on loan basis and not accounted for in income & Expenditure.)

Income: £24, 554

Expenditure: £22, 741

Accounts and annual report were approved at Trustees Meeting 25 January 2020