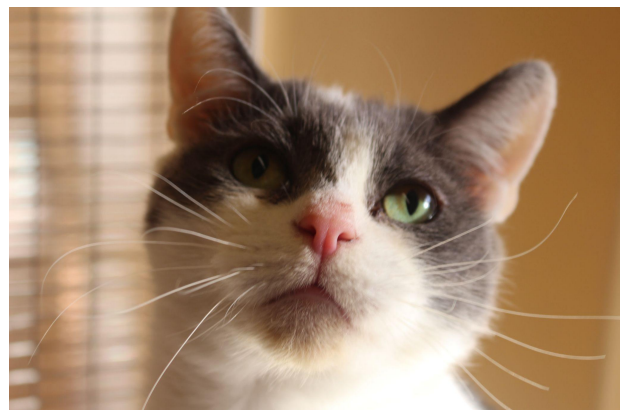
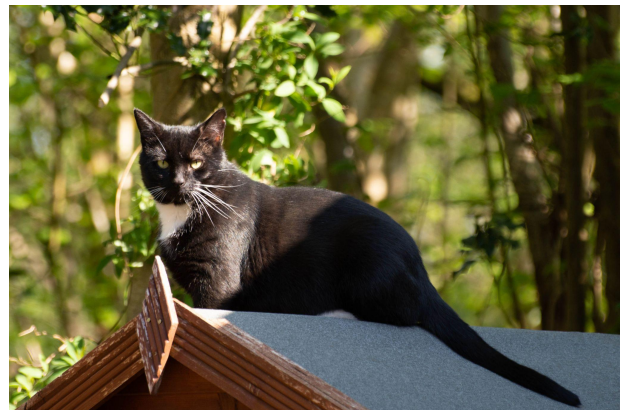




Sussex North Branch

Annual Report 2020



Charity Information	Pages 3 - 5
Financial Review	Page 6
Chairman's Report	Page 7
Home Visitors' Report	Page 8
Chief Inspector's Report	Pages 9 - 16
A selection of cats rehomed during 2020	Page 17

RSPCA SUSSEX NORTH BRANCH
Registered Charity No. 276355

Charity Information

Governing Document	RSPCA Branch Rules 2012 Edition
Trustees:	Mrs A Marsland - Hon. Chairman Mrs J Worsley – Hon. Treasurer Mrs A Stubbings – Hon. Secretary Mr L Anderson Mrs T Hilton Mrs P Berwick Mr P Browning Mr S Ede Miss T Larner
Correspondence Details:	Twineham Place Farm Twineham Lane Twineham West Sussex RH17 5NP
Independent Examiner	Mrs Joanne Mason 26 Victoria Close Burgess Hill West Sussex RH15 9QS
Bankers	Lloyds Bank 99 South Road Haywards Heath West Sussex RH16 4ND

Objects and Public Benefit Statement

The RSPCA Sussex North Branch is an unincorporated charitable association and a separately registered branch of the Royal Society for the Prevention of Cruelty to Animals (the Society), carrying out its direct animal welfare work in the areas of Crawley, Horsham and Haywards Heath and outlying villages.

The objects of the Branch are to promote the work and objects of the Society - to promote kindness and to prevent or suppress cruelty to animals by all lawful means in accordance with the policies of the Society.

The Trustees have reviewed the outcomes and achievements of our objectives and activities for the year, to ensure they remain focused on our charitable aims and continue to deliver benefits to the public. We have complied with the duty under the Charities Act 2006 to have due regard to public benefit guidance published by the Commission.

Advancement of Animal Welfare

Under the Charities Act 2006, the advancement of animal welfare is recognised as a distinct statutory charitable purpose. This legislation and the Animal Welfare Act of the same year indicate an acceptance by the Society that treating living creatures with compassion has a moral benefit for the public as a whole. Whilst this public benefit is clear, it is sometimes difficult to quantify and must be balanced against any detriment.

The Branch's animal welfare work, although local in nature, benefits society at large and also aims to help people in need with the care of their animals. The Chairman's report highlights the Branch's main activities and demonstrates the benefit provided to the public. All our charitable activities as described in more detail in the Chairman's report focus on promoting kindness and preventing or suppressing cruelty to animals and are undertaken to further these purposes for the public benefit.

Charitable Activities pursued for the Public Benefit

Sussex North Branch support our local inspectorate and members of the public by taking in, free of charge, mistreated or abandoned animals, (primarily cats but very occasionally dogs), including pets whose owners suffer ill health or financial difficulties or pass away. The Society's Inspectorate (as well as providing education, information and advice) rescues animals in distress and enforces laws against the cruel mistreatment of animals in England and Wales by bringing prosecutions. This work is key to "the prevention or suppression of cruelty" part of the RSPCA objects and promotes humane sentiments towards animals which involves moral benefit to humankind.

We provide subsidised veterinary treatment for animals that are sick or injured and belong to local people on low incomes. We do this through our partnership clinic. This work benefits those on means tested benefits by giving them financial help to obtain care for companion animals in need of veterinary treatment.

We provide subsidised neutering and microchipping of cats and cross breed dogs for those in the branch area on low incomes or who are claiming certain Government benefits. We do this via a voucher scheme. This work helps to control dog/cat populations through neutering and benefits by giving them financial assistance to help neuter and microchip companion animals, thereby promoting responsible pet ownership.

We rehome animals in need at a low cost to people willing and able to have a companion animal.

Whilst we recognise that companion animals provide measurable benefits to people's physical and mental health, we consider the provision of pets as subsidiary to the main charitable aim of this service, which is to reduce animal suffering.

Our policy to charge a reasonable adoption fee for animals aims to highlight the ongoing personal and financial commitment of pet ownership. It would not be in the best interests of animals, and therefore would fall outside our objects to re-home to those who could not afford them. The public benefits because Sussex North branch ensures that rehomed pets are healthy, have been neutered, vaccinated, micro-chipped and vet checked before being re-homed. We take in free of charge lost animals and take steps to reunite them with their owners. This work benefits our local community (including local authorities) by preventing straying and posing a risk to themselves and to people through road traffic accidents.

We respond to enquiries (both direct and via the Society's national call centre) from the public about animals locally. The public benefits from knowing that we can intervene to assist animals in need.

The public benefits through the promotion of responsible pet ownership. Within the terms of our governing document, we support the National Society and other local RSPCA branches by providing funds, when requested, to assist other welfare incentives carried out within our branch area.

We provide volunteering opportunities for those who wish to support our work, including trusteeship, help in the cattery and fundraising. This benefits local people by providing the possibility of doing work which is compassionate and rewarding.

Financial Review

Financial Position

Incoming resources in 2020 were £79,607 compared to £115,915 received in 2019. We were very fortunate to receive two generous legacies, £15,625 from Mrs Macbeath and £17,641 from Miss Ranger.

Other major income into the branch came from the Society's Door to Door grant of which was £25,173 and 25% of the net profit from the Horsham Charity Shop (£10,463) run by the RSPCA Sussex, Chichester and District branch.

Due to the Pandemic last year, all fundraising activities planned were cancelled.

Investment income totalled £984, a drop of 53% on the previous year. Trustee's are currently reviewing our investments to ensure they are providing the best return available.

Expenditure for 2020 was £59,252 an increase of 33% on the previous year which was in part due to the branch donating £25,000 in response to Society and Branch appeals for help during the Coronavirus pandemic. Our charitable activities were all reduced due to the Pandemic except for our Partnership Clinic that saw a slight increase in costs.

There was an overall unrestricted surplus of £20,024 for the year, following the previous year's surplus of £72,163.

Reserves Policy

Our level of reserves is fairly high at 5.5 years due to receiving £162,555 in legacies over the last 6 years and investing these funds for future plans, one of which is whether to build our own cattery.

Trustees consider 3 years of reserves to be ideal and will review our level of reserves again at the end of 2021 once our future plans have been agreed.

Future Plans

Trustees are reviewing our future plans regarding animal boarding and will ensure our charitable work will continue to support pet owners who are in need of financial assistance and most importantly the care and treatment of unowned animals who arrive into branch care via the RSPCA Inspectorate, also signed over cats whose owners are unable to care for them any longer.

We expect to see an increase of animals at our partnership clinic as pet owners face redundancies and job losses brought about by the Pandemic to which we have budgeted £20,000 for 2021 along with an extra £20,000 towards financial assistance both at our clinic and at other veterinary surgeries from our branch area.

We continue to offer subsidised neutering of cats, dogs and rabbits and will also include free microchips for cats.

Chairman's Report 2020 of the RSPCA Sussex North Branch

The beginning of 2020 started unremarkably. The committee met for the first time at its new venue – The Bolney Stage – and its new time – the second Monday of the month.

We attended a fund-raising weekend at Pets at Home in Crawley, where welfare assistance is frequently requested by clients of Vets for Pets and were making plans to attend further fund-raising events during the year.

We were able to meet a potential new Trustee – Phil Browning – who was subsequently co-opted as a new member of the committee and a second -Les Anderson – who also joined us just as the full impact of the pandemic hit.

The restrictions to control the pandemic had a huge impact on the workings of the branch with the cattery having to close and volunteers unable to work. Fundraising opportunities ground to a halt and new ways of working as a branch had to be addressed. We discovered Zoom and later Google Meet for our regular committee meetings and virtual home visits had to be undertaken for animals to be rehomed.

During this time many of the branches with large animal centres began to suffer and several donations from the branch were made to other branches during national emergency appeals.

I would like to take this opportunity to thank in particular Jo Levey at Arthur Lodge vets who stepped in to assist with home visiting and delivery of cats during this difficult time, when our volunteers were unable to work, and to Becks Cattery who provided private boarding for cats due to the closure of our own cattery.

Demand for welfare assistance grew as the pandemic impacted on people's income and we continued to support those in need despite the fact that our own clinic based in Roffey had to close due to staffing availability.

As we are all aware the Coronavirus has had a massive effect globally and the RSPCA like many other charities has had to make some very difficult decisions in order to survive.

We look forward to 2021 with trepidation at the prospect of many abandoned animals needing support but we will continue to do our best to provide assistance and advice where we can to those in the Sussex North branch area.

On a personal note, I will sadly be standing down as Chair in 2021 due to a house move out of the area but wish the branch and those that precede me continued success in doing what it has done for the past 42 years.

Anita Marsland
Chair
RSPCA SUSSEX NORTH
June 2021

HOME VISITOR COORDINATOR REPORT 2020

We would like to say a big thank you to our home visitors for volunteering to come back on board when we start to do home visits again shortly.

2020 was a hard year, although we did manage to achieve 27 cats and 32 dogs rehomed before Covid kicked in.

Hopefully 2021 will be a better year and we can meet up face to face and rehome loads of animals.

Stephen Ede
Home Visiting Coordinator

CHIEF INSPECTOR'S ANNUAL REPORT FOR 2020

The Sussex Group
SUSSEX, KENT

Chief Inspector Patrick S. Hamby

Deputy Chief Inspector Charlotte Baumann

Deputy Chief Inspector Rachel Smith

Inspector Zoe Ballard

Inspector Kate Barnes

Inspector Laura Bryant

Inspector Rebecca Carter

Inspector Cora Peeters

Inspector Tony Woodley

ARO Marie Stevens

ARO Julie Parsons

ARO Claire Thomas

ARO Abbie Fight

It gives me great pleasure to present to you the annual report for the Sussex Inspectorate for 2020.

Where do I begin!!!

It has been a most challenging year for all of us, whether you are a volunteer or staff member. We had a contractual change towards the end of 2019 and thought we could start afresh in 2020. We were starting to settle in with working a new system called Wilberforce which was just a new way of working, but in general a new year and a fresh start. Who would have thought that in two months time the whole country would come to a stop. We started using words like 'lock down' 'self-isolation' and 'social distancing'. No matter who you are, we were all affected in one way or another. The pandemic hit the country like a freight train of likes that we have not seen before. It was not just us but the entire world.

One of the consequences of the lockdown was our finances. The Charity sector was hit very hard whether you were in animal welfare or fighting cancer, all of us were affected. Drastic action was needed to stem the losses the Society was suffering. In April we embarked on a restructuring like no other time seen in the Society's history. We had to reduce expenditure by 20 million pounds which meant job losses throughout the Society as well as frontline staff. regional animal homes and animal hospitals.

While going through the process, we saw the pandemic get worse and worse, schools closing, some home schooling, working from home and much more. We had to reduce the work we do in the field as the pandemic tightened its grip on the country. We had to protect staff as well as the public from the pandemic but we also had a responsibility for those animals still in need of our help. Through the dedication of our Branches and frontline staff we still continued to do the work we all feel so passionate about. Brighton Branch was an example of stepping up to the challenge like others in the region, they opened their kennels and cattery to anything we in the field would end up with for various reasons. Without question, Jenny Wells, Patcham's Manager, accepted animals throughout the county as well from other areas as well. Working in partnership with Jenny we were able to take animals that were in need.

Once the process lasted all summer, we continued to work under strange working practices as the pandemic continued and we were still able to help those animals in need despite it all. When the consultation was completed it was very difficult as we all had to say goodbye to a lot of colleagues of which we had worked with for many years. It was difficult for all of us and no one was unaffected by it.

We saw the closure of South Godstone and Putney Animal Hospital, Southall Clinic and Cattery as well. This was an attempt to rebalance resources in the South as the North have limited animal centres. Due to the restructure the group has lost the areas of Tunbridge Wells, Tonbridge and Sevenoaks including Kent West which is a great loss to the group as they have been very supportive of the Sussex Group.

We are now in a much stronger position to go forward and do what we do best for animals in need. We also saw the creation of Animal Rescue Officers, who take the place of Animal Collection Officers and Animal Welfare Officers. This new role after their training allows them to do complaints including emergency one, as well as collections and rescues. This gives us more scope to attend more incidents and utilise our officers better. The role also allows a career path into the role of an inspector in future if they so choose.

I cannot help but mention a different way of working as well, we have proved we can also learn new skills, especially when it comes to meetings. The use of Zoom and Hangouts have shown us all we can do things a bit differently, saving time and money in many different ways. Less driving has many positive aspects, not only money saving but environmental as well.

We wish to offer our thanks to Sussex and Kent Police for their invaluable assistance. Our thanks also goes to East Sussex, West Sussex and Kent Fire and Rescue Service for the many occasions that they have helped with rescues of animals that have got themselves trapped or in difficulty and we have needed their equipment and manpower to resolve the situation. David Buck, Chancellors and Brachers Solicitor teams also need to be thanked for their excellent presentation of evidence in our cases at court.

Of course, we have not forgotten the RSPCA animal centres that take in our animals, care for them and eventually rehome them. Our sincere thanks to the Branch catteries and kennels that board, care for and rehome our animals, usually at very short notice and at the most inconvenient times, and to the experts who care for our sick and injured wildlife until they have been rehabilitated and are able to be released back into the wild.

We are not the only charity that goes to great effort for the benefit of animal welfare and I wish to acknowledge other organisations that provide us with invaluable assistance. Thank you to Folly Wildlife for their excellent work for the welfare of wildlife, WADARS (Worthing and District Animals Rescue Services) for assisting us on numerous occasions going to rescues when we could not get there fast enough and Brent Lodge Wildlife Hospital in the Chichester area. We also work very closely with Sara Smith and Claire Gordon of World Horse Welfare to improve the welfare of equines in the area.

Our highly-skilled intelligence teams also need a mention, who use state of the art technology to trace some of the miscreants who mistakenly think that by running off to other parts of the country they can escape the consequences of their cruel or neglectful actions.

Finally, on behalf of everyone in the Sussex group, a big thank you to all of the Sussex and Kent Branches, members and volunteers for making us feel so welcome at your meetings and for all the difficult and invaluable work you have done throughout 2019. Without you dedicating your time and efforts we would not be able to achieve all that we do.

To give you a taste of what we do, here are just a few of the things that we dealt with in the past year that you may find interesting.

The Year of the Rescues:

Our swift water rescue and boat teams were very active throughout 2020. These teams consist of members of the inspectorate who have received specialist training to conduct water rescues using boats, ropes and other equipment. We work with the Fire and Rescue services of Kent, West Sussex and East Sussex.

Remember February's wettest month since records began. Once again our rescue teams have been out assisting animals in need due to the weather. Teams of RSPCA trained officers have gone out in various parts of the country assisting other emergency services dealing with the flooding and the aftermath of all the rains we have had in the last month. Officers assisted owners to move their horses and other livestock to safer ground and out of flooded fields. The following photos are of officers in the Kent and Sussex Group assisting an owner with her animals in Headcorn, Kent.



The Fire and Rescue Service were always on hand to assist us rescuing birds on roofs caught in netting and cats up trees. Their technical rescue team was invaluable and helped our officers throughout the year. These are just a few photos of rescues they assisted us on throughout the county.



Rescue of a Jackdaw in Eastbourne



Rescue of a gull in Hove



Rescue of a Kitten in Haywards Heath



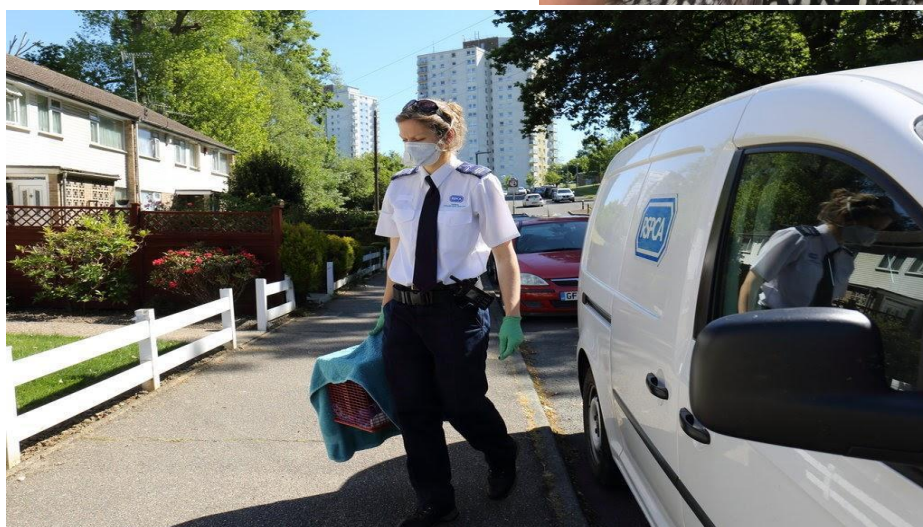
and a rescue of two cows stuck in the mud in Uckfield.

As you can tell, it is never a straightforward operation for the Fire and Rescue Service. Their specialist equipment has proven to be vital in successfully rescuing the animals we call them out for.

You never know what is going on behind closed doors, in the photos below is just such an incident. The Fire and Rescue Service were called to a house fire in Hove and were confronted with over xx gerbils in numerous cages which were in the front and rear of the property. Luckily Insp Woodley and ARO Parsons and the staff at Patcham were on hand to catch them all up and get them to a place of safety.



Even during this crisis we still were able to help those in need. We assisted branches in taking cats and dogs to their new homes in a covid safe way (ARO Claire Thomas taking a cat to its new home). We were also able to help those who called us for help. Inspector Peeters and ARO Julie Parsons removed a lot of fowl (Geese, Chickens, quail, etc) from a small holding where the owner sadly passed away. We were able to find new homes for them on behalf of his relatives.



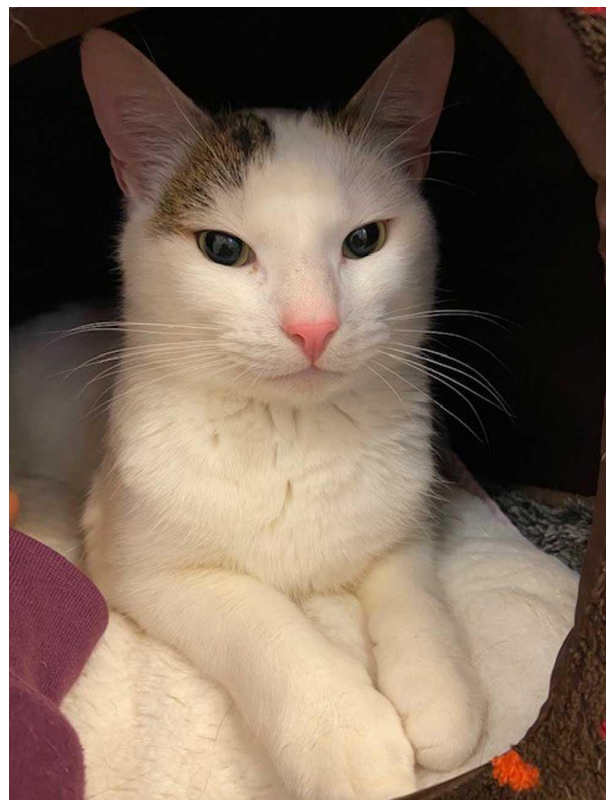
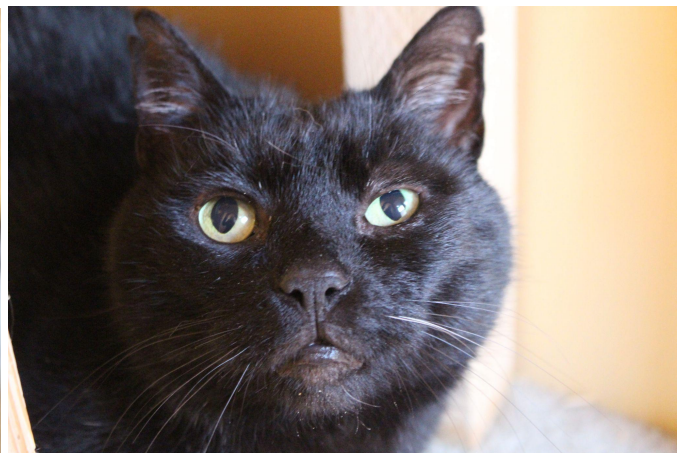
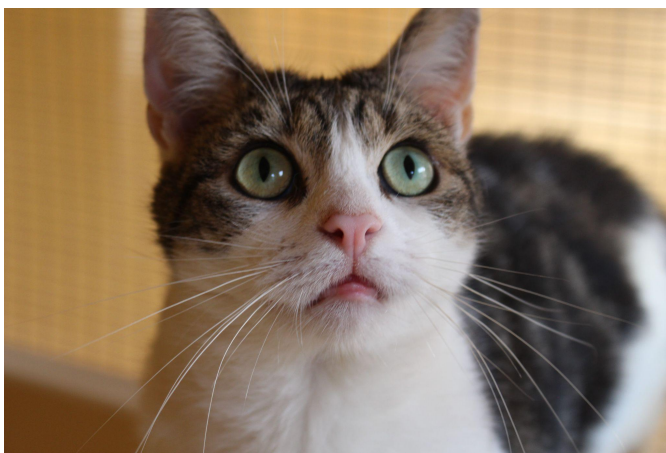
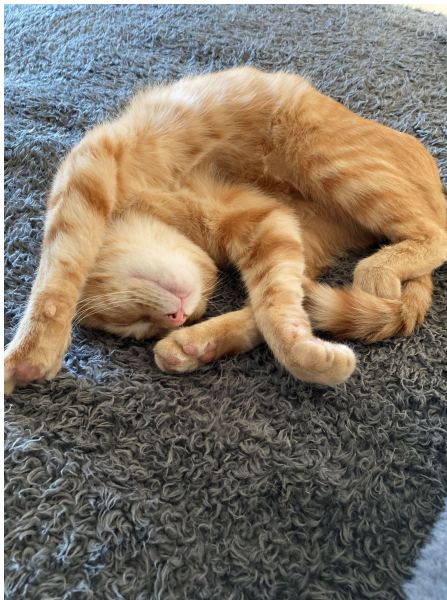
0

The new year has started out pretty much as the last one ended, still in lockdown, restrictions in place, but I believe we will come out of this strong with renewed enthusiasm to continue the fight for animal welfare as we have done for nearly two centuries.

Please stay safe and Well !!!

Kind Regards

Patrick S. Hamby 407
Chief Inspector Sussex Group



A few more of the cats/kittens we rehomed during 2020.

RSPCA SUSSEX NORTH BRANCH

Charity Registration No. 276355

Statement of Account for the year ended 31st December 2020

Joanne Mason, FCCA
26 Victoria Close
Burgess Hill
West Sussex
RH15 9QS

RSPCA SUSSEX NORTH BRANCH

CHARITY INFORMATION

REGISTERED CHARITY NUMBER	276355
GOVERNING DOCUMENT	RSPCA model rules for branches as amended 1st January 2019
TRUSTEES	Mrs A Marsland - Chair Mrs J Worsley - Treasurer Mrs A Stubbings - Secretary Miss T Larner Mrs P Berwick Mr S Ede Mrs T Hilton Mr P Browning Mr L Anderson
CORRESPONDENCE DETAILS	Twineham Place Farm Twineham Lane Twineham West Sussex RH17 5NP
INDEPENDENT EXAMINER	Mrs Joanne Mason 26 Victoria Close Burgess Hill West Sussex RH15 9QS
BANKERS	Lloyds Bank plc 99-101 South Road Haywards Heath West Sussex RH16 4ND

RSPCA SUSSEX NORTH BRANCH
Statement of Financial Activities
for the year ended 31st December 2020

	Notes	Unrestricted Funds £	Restricted Funds £	Total Funds 2020	2019 £	2018 £
Incoming Resources						
Voluntary Income	3.1	67,798		67,798	101830	42,823
Activities for Generating Funds	3.2	10,620		10,620	11942	8,112
Investment Income	3.3	984		984	2094	1,933
Activities for Charitable Objectives	3.4	78		78	0	-
Other Income	3.5	127		127	51	167
						-
Total Incoming Resources		79,607		79,607	115915	53,037
Resources Expended						
Grants & Donations	4.1	31,064		31,064	7718	18,875
Activities for Charitable Objectives	4.2	27,220		27,220	35079	34,217
Support Costs	4.3	78		78	0	58
Management & Administration	4.4	694		694	1532	1,478
Other Resources Expended	4.5	196		196	66	305
Total Resources Expended		59,252		59,252	44395	54,933
Net Resources Expended		20,355		20,355	71,520	(1,896)
Gain/(Loss) on Investment Assets		-331		(331)	643	(904)
Net Movement in Funds		20,024		20,024	72,163	(2,801)
Total Funds at 1st January		316,992		316,992	244,829	247,630
Total Funds at 31st December		337,016		337,016	316,992	244,829

The Notes to the Accounts form part of these Financial Statements

RSPCA SUSSEX NORTH BRANCH
Statement of Assets and Liabilities
at 31st December 2020

	2020 £	2019 £	2018 £
CURRENT ASSETS			
National Savings Bonds	27,000	27,000	27,000
Lloyds Current Account	114,885	98,084	80,954
Yorkshire Building Society	80,819	80,476	25,349
IM CAF UK Equity Fund B (6499.9230 shares)	9,690	10,046	9,569
IM CAF Fixed Interest Fund B (2783.1170 shares)	2,915	2,891	2,726
Shawbrook Bank	101,352	101,300	100,000
Petty Cash	80	80	80
Paypal	0	122	-
VAT Debtor	204	579	757

CURRENT LIABILITIES

Uncleared cheques	- -	3,527	
Creditors : Short Term	-	-	1,606
Adjustment to balance	71 -	58	-

FUNDS

General Fund	<u>337,016</u>	<u>316,992</u>	<u>244,829</u>
Restricted Fund	- -		

ADOPTION RESOLUTION

The attached accounts and statement was approved by the Trustees of the above charity at their AGM held online using Google Meet on the 28th day of June 2021

J L Worsley

Treasurer

A M Marsland

Chair

RSPCA SUSSEX NORTH BRANCH
Notes to the Accounts for the year ended 31st December 2020

1 Basis of Preparation

1.1 Basis of accounting

The financial statements have been prepared in accordance with applicable accounting standards and the Statement of Recommended Practice (SORP 2005).

1.2 Change in basis of accounting

There has been no change to the accounting policies since last year.

1.3 Changes to previous accounts

No changes have been made to accounts for previous years.

2 Accounting Policies

Unrestricted funds are donations and other income received or generated for the objects of the charity without further specified purpose and are available as general funds. These are included in full when received.

Restricted funds are to be used for the specific purposes as laid down by the donor. Expenditure which meets these criteria is identified to the fund.

3 Analysis of Incoming Resources

3.1 Voluntary Income

	Unrestricted Funds £	Restricted Funds £	Total Funds £ 2020	Total Funds £ 2019	Total Funds £ 2018
Sundry Donations	4,597		4,597	150	496
Subs from HQ	310		310	17	367
Neutering Receipts	1,505		1,505	1,650	1,395
Legacies & Covenants	32,266		32,266	67,673	7,952
Adoption Fee (Cats & Dog)	3,072		3,072	5,100	5,219
RSPCA Door to Door	25,173		25,173	26,739	27,034
Gift Aid	268		268		-
Charities Trust (Payroll Giving)	607		607	500	360
	67,798		67,798	101,830	42,823

3.2 Activities for Generating Funds

Fundraising Events	157		157	280	672
Charity Shop - Horsham	10,463		10,463	11,662	7440
	10,620		10,620	11,942	8112

3.3 Investment Income

Interest (Shawbrook, Yorkshire, CAF, ...)	984		984	2,094	1933
	984		984	2,094	1933

3.4 Activities Furthering Charitable Objectives

Companion Care Clinic	78		78	-	-
	78		78	-	-

3.5 Other Income

Pet Insurance	107		107	38	40
Amazon Smile	20		20	12	-
Yellow Forms	-		-	-	7
	127		127	51	47

4 Analysis of Resources Expended

4.1 Grants & Donations

RSPCA Branch Contribution	6,064	6,064	7,718	5,775
RSPCA Mobile Neutering	-	-	-	3000
RSPCA Equine Fund	-	-	-	3000
South Godstone Animal Centre	-	-	-	4100
RSPCA Mallydams	-	-	-	3000
RSPCA Emergency Coronavirus Appeal	10,000	10,000	-	-
RSPCA Branch Emergency Coronavirus Appeal	15,000	15,000	-	-
	31,064	31,064	7,718	18,875

4.2 Costs of Activities for Charitable Objectives

Partnership Clinic	6,197	6,197	5,450	4010
Purchases <i>Burtons Dental Machine</i>	-	-	-	2560
Rehoming Expenses	7,157	7,157	11,950	12191
Financial Assistance	9,935	9,935	12,476	9843
Neutering Subsidies	3,932	3,932	5,203	5519
Snip & Chip	-	-	-	94
Big Walkies	-	-	-	-
	27,220	27,220	35,079	34217

4.3 Support Costs

Advertising/PR	78	78	-	-
Fundraising Stock	-	-	-	58
	78	78	-	58

4.4 Management & Administration

Printing & Stationery	32	32	264	416
Postage & Mileage	662	662	565	465
Audit Fee	-	-	-	-
Insurance	-	-	524	524
Meeting Expenses	-	-	139	13
Clinic Mobile Phone	-	-	41	60
	694	694	1,532	1478

4.5 Other Resources Expended

Miscellaneous Expenditure	196	196	66	305
	196	196	66	305

5 Remuneration to Trustees

The trustees received no remuneration during the year.

Treasurer's Report 2020

2020 proved to be a very difficult year for us and many other charities due to the Coronavirus Pandemic. The country went into lockdown on March 26th and our cattery/clinic was closed. During the year and with limited facilities open, we continued to assist pet owners who were struggling financially by assisting towards their veterinary consultations, treatments/surgery (sometimes emergency surgery) and medications. 325 dogs, 120 cats, 20 rabbits and 3 small furries.

We subsidised the neutering of 34 dogs, 65 cats and 9 rabbits.

We successfully rehomed 32 cats and a rabbit that arrived into branch care via the Inspectorate, some of which were strays, others were signed over as their owners were unable to look after them.

Total Income for 2020 was £79,607, down 31% on the previous year however we had been extremely fortunate to receive legacies totalling £67,673 in 2019.

Legacies received during 2020 amounted to £32,266 - 41% of our total income. RSPCA Door to Door grant received was £25,173 - 32% of total income and our third highest provider, the Horsham charity shop, saw £10,463 in income received against £7,440 the previous year.

Investment interest reduced greatly during 2020, £984 less than half of that received in 2019. However, payroll giving increased from £500 to £607 and we thank our supporters most sincerely for their monthly donations continuing throughout 2020.

Total Expenditure was £59,252 - 33% higher in 2020 than the previous year. Trustees approved donations to the National Society Emergency Coronavirus Appeal £10k and the Branches Emergency Coronavirus Appeal £15k.

Our charitable activities were reduced somewhat in all areas except our partnership clinic which saw an increase of £747 during 2020 despite being closed for part of the year. Total funds spent on charitable activities ie Clinic, Rehoming, Neutering, Financial Assistance totalled £27,220. £7,157 of which were rehoming expenses.

Minimal spending on the management and administration of the branch, just 1% of our total spend.

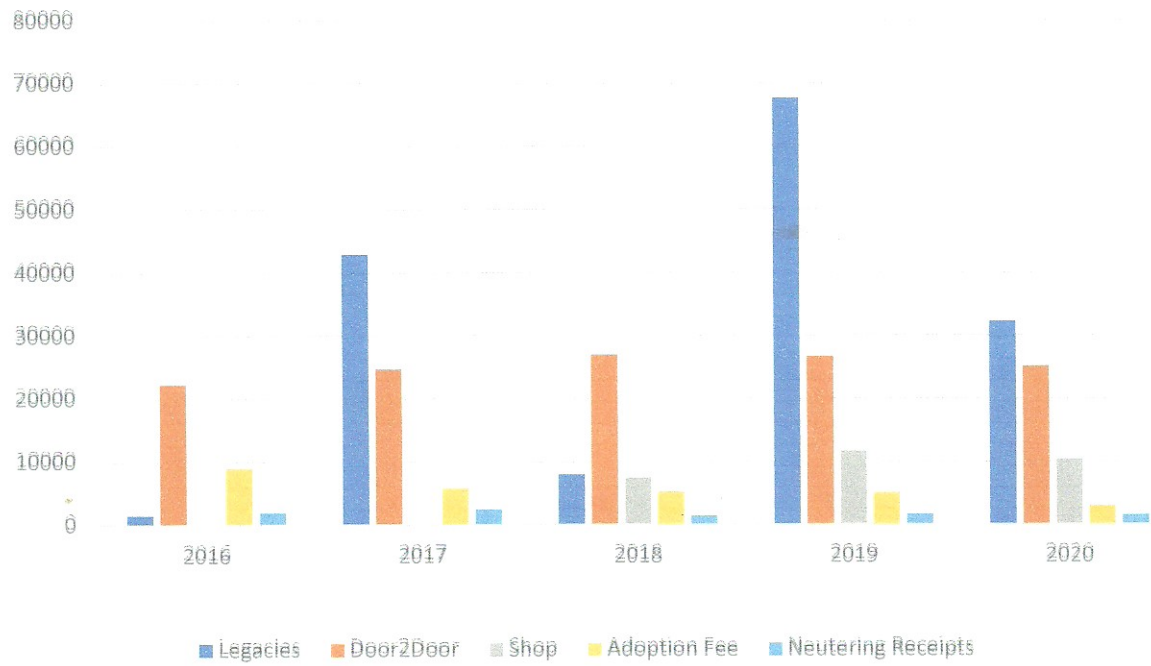
Our branch investments lost £331 in value giving an Income over Expenditure figure of £20,024.

Balance sheet stands at £337,016.

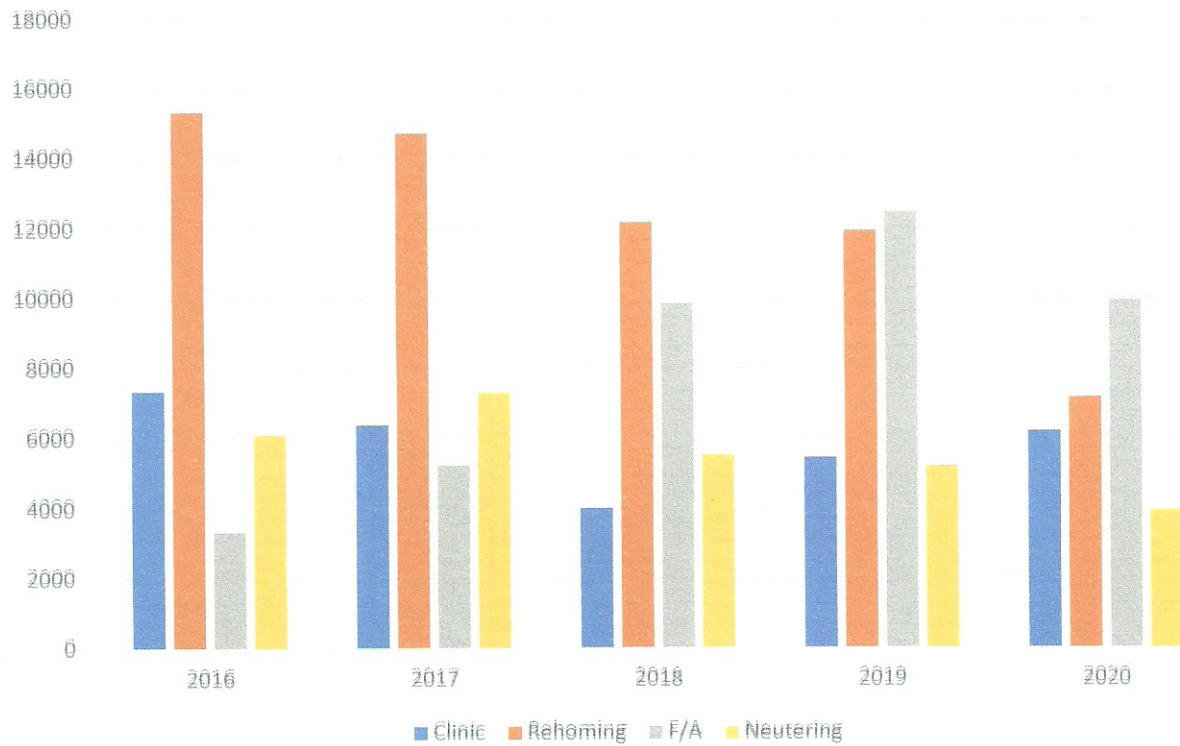
Forecast for 2021 will be to spend at least £20k on financial assistance on owned animals in our branch area and to increase numbers of animals seen at our partnership clinic.

We will continue to help with neutering subsidies to include free microchipping for cats and will look to reopen our cattery in Roffey as soon as the 3rd National Lockdown is over.

Income 2016-2020



Expenditure 2016-2020





CHARITY COMMISSION FOR ENGLAND AND WALES

Independent examiner's report on the accounts

Section A

Independent Examiner's Report

Report to the trustees/
members of

Charity Name
RSPCA Sussex North Branch

On accounts for the year
ended

31.12.2020

Charity no
(if any)

276355

Set out on pages

(remember to include the page numbers of additional sheets)

I report to the trustees on my examination of the accounts of the above charity ("the Trust") for the year ended 31 / 12 / 2020.

Responsibilities and
basis of report

As the charity trustees of the Trust, you are responsible for the preparation of the accounts in accordance with the requirements of the Charities Act 2011 ("the Act").

I report in respect of my examination of the Trust's accounts carried out under section 145 of the 2011 Act and in carrying out my examination, I have followed the applicable Directions given by the Charity Commission under section 145(5)(b) of the Act.

Independent
examiner's statement

I have completed my examination. I confirm that no material matters have come to my attention (other than that disclosed below *) in connection with the examination which gives me cause to believe that in, any material respect:

- accounting records were not kept in accordance with section 130 of the Act or
- the accounts do not accord with the accounting records

I have no concerns and have come across no other matters in connection with the examination to which attention should be drawn in order to enable a proper understanding of the accounts to be reached.

** Please delete the words in the brackets if they do not apply.*

Signed:

Joanne Mason

Date: 11/06/2021

Name:

Joanne Mason (FCCA)

Relevant professional
qualification(s) or body
(if any):

Association of Chartered Certified Accountants

Address:

Grace House, 26 Victoria Close

Burgess Hill

West Sussex, RH15 9QS