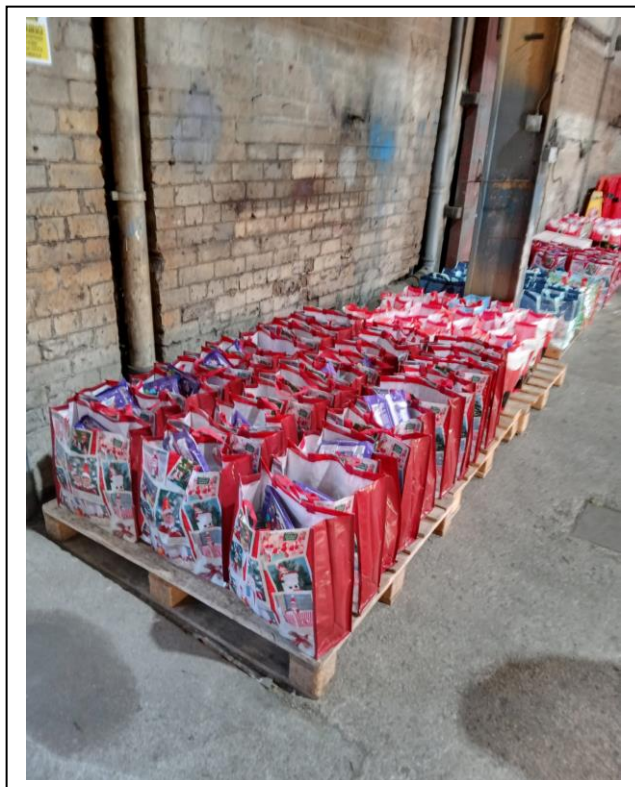




**providing crisis packs for those in need**

**PORCH BOXES**

# **ANNUAL REPORT AND ACCOUNTS**



**2021**

## **Contents**

	Page
Statement of Welcome by the Chair	3
<b>Trustees' Annual Report</b>	
Reference and administration details	5
Structure, governance and management	6
Objectives and activities	7
Summary of main achievements	8
Financial review	9
Assessment of achievement	9
Information From User Agencies	12
Volunteers	12
Thanks	14
Referral agencies	17
Income and Expenditure Account	20
Reconciliation of Funds	21
Ring Fenced Funds	22
Certification by the Independent Examiner	23
Statement of Management Committee Responsibilities	24
Declaration on behalf of the Trustees	24

## ***Cover Photo***

***Christmas Bags ready for delivery December 2021***

## **Welcome 2022**

Welcome to our twenty second Annual Report.

It has been yet another extremely busy year.

The pandemic brought about changes in our operating system at Porch Boxes and we have continued with these as the virus situation has altered throughout the last year. As stated in the last report the new system has proved to be more efficient than our previous operation so it continues.

We have all lived through unprecedented times. I am proud to report that the team at Porch Boxes continue to work with dedication, enthusiasm and compassion. Offering much needed help to so many people in our area.

Once again I would like to thank the countless numbers of people who have contributed to the continued success of Porch Boxes in so many ways this year.

Our committed team of volunteers meet on Wednesday mornings at the warehouse and usually pack and deliver on average 80 to 100 bags/boxes per week. This number continues to fluctuate on a weekly basis and I see no reason why this will decrease in our current financial climate.

Over the last two years we have seen a change in the agencies using our service. Some continue to work from home and have not returned to their offices. This continues to bring difficulties for their service users.

We remain a member of the Bury Community Support Network BCSN which was one positive outcome of the pandemic. All food groups now work together sharing information, resources and support.

Many regular donors have altered their way of giving with a number now opting to support us financially as opposed to gifts of goods. This has added extra flexibility for us as we can purchase many more much needed items which are not usually donated e.g. UHT milk which can now be given weekly with most orders. We have also been able to be more generous in the number of items in each food bag.

This year also saw the start of a new service we are able to offer. We now provide high calorie nutrition bags to elderly and vulnerable patients on their discharge from Fairfield Hospital. The contents of the bags have been agreed with nutrition experts at the NHS Foundation trust. We were thrilled to win the Tesco blue token scheme which gave us some funds to start this system up.

These continue to be tough times and the need for help and support continues to increase year on year. Thankfully the kindness and generosity of the people of Bury has also increased.

We are grateful to have the continued support from Bury Council. We could not operate without the use of part of one of their industrial units at Bradley Fold Trading Estate. This is our main distribution and work centre.

We have also invested in a new sign which we have outside the unit when we are in operation making us easier to find!! Many thanks to the team at Bury Signs Ltd who provided us with the sign at cost and donated the design and artwork for free.

In the coming months we have another exciting new 'Beds For Bury' project which we are in the process of setting up.

Following the pandemic and the rise in foodbank usage we have been regularly approached for help by individuals and continue to signpost them to relevant agencies and groups offering access to food provision and advice. If they have difficulty accessing further help we will continue to meet their needs directly.

I am immensely proud to work with such an incredible team of volunteers who have gone the extra mile during this past year and continue to do so.

As always it remains a tremendous privilege to act as Chair to Porch Boxes and it is an honour to work with such a committed and dedicated group of volunteers who make a difference to the lives of so many people.



**Julia Rowlands**  
**Chair**

# **Trustees' annual report for the period 1 January to 31 December 2021**

## **Reference and administration details**

**Charity name:** Porch Boxes

**Other names by which  
Charity is known:** The Porch  
Porch Project

**Registered charity number:** 1089998

**Charity's principal address:** 46 Starling Road, Radcliffe M26 4LN

<b>Names of the charity trustees who manage the charity:</b>	Julia Rowlands	Chair
	Michael Perrin	Treasurer
	Alan Wood	Secretary
	Iain Hodcroft	
	David Archer	
	Laurel Avery	
	Andy Clark	
	Eileen Smith	

**Website:** [www.porchboxes.org.uk](http://www.porchboxes.org.uk)

**Bank:** Santander UK plc, Bridle Road, Bootle L30 4GB

**Staff:** The charity has no paid staff.

## **Structure, governance and management**

### **Description of the charity's trusts**

#### **Type of governing document:**

Constitution amended and adopted 21 May 2002

#### **How the charity is constituted:**

Association consisting of

- individuals (over the age of 18 years) who are interested in furthering the work of the Charity and who have paid any annual subscription laid down from time to time by the Executive Committee [presently set at zero], and
- any body corporate or unincorporated association which is interested in furthering the Charity's work and has paid any annual subscription [presently set at zero] [any such body being called in this constitution a 'member organisation']

Individual members include those who by their presence at meetings or in other ways demonstrate their interest in furthering the work of the charity.

#### **Trustee selection methods:**

Trustees are elected or re-elected annually at the Annual General Meeting held in Spring each year

#### **Additional governance issues:**

- All Trustees give their time voluntarily and receive no remuneration or other benefits. Agreed expenses incurred are reimbursed.
- In accordance with its Constitution, Porch Boxes co-operates with other agencies locally where they are undertaking work similar to that of Porch Boxes.
- Porch Boxes representatives have attended and are willing to attend meetings and forums as required in order to share information relevant to our users and those with a shared interest in countering food poverty.
- The Trustees have identified major risks to the achievement of the charity's objectives and have put in place insurance, policies or practices to seek to avoid the objectives of the charity being frustrated. Policies include Diversity, Equal Opportunities, Health and Safety, Safeguarding, Confidentiality and Support, Supervision and Training of Volunteers.

## **Objectives and activities**

### **Summary of the objects of Porch Boxes set out in the Constitution:**

The Charity's objects are the relief of poverty and distress primarily amongst people living in the Bury and Rochdale Metropolitan Boroughs in particular but not exclusively by the provision of food, toiletries and other essential goods.

### **Summary of the main activities undertaken for the public benefit in relation to these objects:**

In planning the activities for the year, the Trustees kept in mind the Charity Commission's guidance on public benefit at meetings of the Management Committee.

We continued to promote our service with agencies working with vulnerable people in the areas indicated by our Constitution. We do not turn down occasional requests for assistance from contacts within neighbouring areas.

New agencies are provided with service on request. Our service is available to everyone who falls within our charitable objective, i.e. all vulnerable people in crisis need. Grant applications are made when appropriate.

Operations are massively supported by gifts in kind. The work of the charity is publicised amongst community groups such as Churches and schools whenever possible. Our website has proved to be an invaluable path for many agencies, community groups and others to learn of our work and offer support as financial donors, by offering gifts in-kind, and by volunteering. An on-line donation and gift-aiding capability is available.

A great contribution is made by volunteers who serve as Trustees, as packers, as deliverers of packs, as people who collect donations in kind, as publicists in various ways, as fundraisers and as administrators. We thank all these people, without whom there would be no "Porch Boxes".

We are increasingly being asked to support individuals in crisis need directly, we have experienced a growing number of telephone requests from such people. Where there is a need for a direct access response, we endeavor to signpost individuals to other appropriate agencies. However if this is not possible then Porch Boxes will meet that direct need for help.

## **Additional details of objectives and activities**

### **Summary of the main achievements of the charity during the year:**

The following section sets out the Trustees' assessment of the achievement of the charity this year.

The referral agencies through which we support vulnerable people in crisis need continue to report a very high degree of satisfaction with the service provided. In particular, they continue to report that Porch Boxes makes a huge difference in the lives of their service users.

Porch Boxes supports many agencies, and assists them in meeting their own objectives. Thus assisting them in encouraging healthy lifestyles, returning vulnerable people to sustainable lifestyles, preventing crime, reducing dependence on drugs and alcohol and avoiding destitution.

Porch Boxes provides an outlet for the spontaneous urge of many in the community to provide practical support to people in crisis.

Throughout the year, Porch Boxes has continued to work closely with other groups who are planning and working to support local vulnerable people in crisis need.

Our partners include local churches, schools, individual teams within Bury Council and local foodbanks via BCSN.

The website is proving valuable and the Trustees are grateful for the work that goes into maintaining this.

## **Financial review**



### **Brief statement of the charity's policy on reserves:**

Our reserve policy is always to have sufficient funds for known commitments and to allow for the purchase of items for crisis packs and volunteer expenses. The reserve fund of £60,000 has been put in place to protect the Charity should the rent free use of the Bradley Fold Unit be withdrawn at any point in the future. It is intended to cover accommodation costs in the short term and has been estimated as 24 months at an assumed monthly rent of £2,500.

### **Details of any funds materially in deficit:**

Not applicable

### **Further financial review details:**

The Accounts for 2021 are included in this Report. They have been scrutinised by an Independent Examiner, whose signature is held on the original documents. Further comments on the finances of the charity are included as notes to the Accounts, and a commentary in the Assessment of Achievement section of this Report. Those making financial gifts are listed in the Thanks section of this Report (although individual donors are not named there).

### **Assessment of achievement**

The Trustees have established a number of measures to assess the success of Porch Boxes' service. Those measures and our assessment against them are set out briefly.

#### **Measure 1: Satisfaction with service provided to be assured, as expressed by referral agencies**

- Unsolicited testimony to the importance of the work of the charity continues to be received.
- Communications with us bear testimony to the responsive nature of the service in providing what customers say they want. They also show that agencies are convinced that the contribution made by Porch Boxes to their work makes a real difference in the lives of their vulnerable clients.

#### **Measure 2: Weekly deliveries**

- The following numbers are for weekly parcels packed and delivered. This doesn't include additional items such as nappies and baby items. The numbers on the chart below for 2021 are purely food parcels/bags.

## 2021

Date	Numbers		Date	Numbers		Date	Numbers
6 <sup>th</sup> January	126		3 <sup>rd</sup> February	159		3 <sup>rd</sup> March	162
13 <sup>th</sup> January	199		10 <sup>th</sup> February	159		10 <sup>th</sup> March	175
20 <sup>th</sup> January	171		17 <sup>th</sup> February	180		17 <sup>th</sup> March	186
27 <sup>th</sup> January	201		24 <sup>th</sup> February	144		24 <sup>th</sup> March	118
						31 <sup>st</sup> March	119
<b>Total</b>	<b>697</b>		<b>Total</b>	<b>642</b>		<b>Total</b>	<b>602</b>

## Easter 2021

Agency	Number
WOW	44
CAP	25
Resettlement	50
First Point	30
Young Carers	75
Care Leavers	86
Parkview	21
Maximus	36
Travellers Service	60
Ellen Court	20
Safenet	30
Topping Fold	20
Castlecroft	25
Radcliffe Road	25

Date	Numbers		Date	Numbers		Date	Numbers
7 <sup>th</sup> April	87		5 <sup>th</sup> May	108		2 <sup>nd</sup> June	68
14 <sup>th</sup> April	132		12 <sup>th</sup> May	135		9 <sup>th</sup> June	116
21 <sup>st</sup> April	133		19 <sup>th</sup> May	74		16 <sup>th</sup> June	81
28 <sup>th</sup> April	134		26 <sup>th</sup> May	128		23 <sup>rd</sup> June	142
						30 <sup>th</sup> June	70
<b>Total</b>	<b>486</b>		<b>Total</b>	<b>445</b>		<b>Total</b>	<b>477</b>

Date	Numbers		Date	Numbers		Date	Numbers
7 <sup>th</sup> July	134		4 <sup>th</sup> August	84		1 <sup>st</sup> September	57
14 <sup>th</sup> July	78		11 <sup>th</sup> August	81		8 <sup>th</sup> September	81
21 <sup>st</sup> July	111		18 <sup>th</sup> August	110		15 <sup>th</sup> September	62
28 <sup>th</sup> July	103		25 <sup>th</sup> August	19		22 <sup>nd</sup> September	66
						29 <sup>th</sup> September	96
<b>Total</b>	<b>426</b>		<b>Total</b>	<b>294</b>		<b>Total</b>	<b>362</b>

Date	Numbers		Date	Numbers		Date	Numbers
6 <sup>th</sup> October	88		3 <sup>rd</sup> November	81		1 <sup>st</sup> December	72
13 <sup>th</sup> October	136		10 <sup>th</sup> November	72		8 <sup>th</sup> December	75
20 <sup>th</sup> October	52		17 <sup>th</sup> November	95		15 <sup>th</sup> December	101
27 <sup>th</sup> October	86		24 <sup>th</sup> November	76		22 <sup>nd</sup> December	120
						December	
						29 <sup>th</sup> December	63
<b>Total</b>	<b>362</b>		<b>Total</b>	<b>324</b>		<b>Total</b>	<b>431</b>

### Christmas Deliveries 2021

Family Hampers	Individual Hampers	Presents
<b>101</b>	<b>273</b>	<b>307</b>

**Plus supplies for veterans breakfast held over the Christmas period**

**Extra chocolates and treats to various agencies**

### **Additional Items not included in the chart above**

**deliveries of nappies and/or toiletries**

**cots**

**prams**

**high chairs**

**safety gates**

**fresh food, cleaning materials, bedding, baby milk and baby food**

**toys, books and clothes**

### **Measure 3: Budget to be established and met**

- A budget has been established for 2022 as shown in the Accounts section. Expenditure will be undertaken against that budget.
- We are very grateful again this year for the very generous level of financial support we have received by way of donations from both individuals and corporate bodies.

### **Information from agencies:**

We always ask our agency users for the reasons why their client needs a box from us. This allows us to try and understand the reasons and trends behind the food poverty issue in our locality.

Here are the main reasons:

- Difficulties encountered with the universal credit system
- moving to independent living with delays in establishing benefits
- destitute asylum seekers with no recourse to public funds
- Benefit delays following change of circumstance appeals
- Inability to budget and manage income.
- Illness and bereavements
- Addiction issues
- fleeing difficult home circumstances
- Benefits sanctions/suspension or disallowance
- ‘sofa surfing’ and ‘rough sleeping’
- Unemployment, loss of hours and changes to contracts

### **Thoughts from our volunteers**

Once again I have seen the Porch Boxes volunteers work cheerfully and hard to keep the food parcels flowing to those in need. It is a privilege to be a part of such a dedicated and positive team.

*David*

Volunteering at Porch is a fulfilling and therapeutic way to spend a couple of hours on a Wednesday morning. To arrive first thing in the morning to see a stack of full crates to be dated and then at the end of shift those crates stacked empty is very rewarding. The continuing positive feedback from the

agencies we serve provides the motivation and justification to continue to do this each week. The continuing generosity of the individuals, groups, and churches, who donate never ceases to amaze me. Also, it is good to be part of a friendly, enthusiastic, and efficient team.

*Laurel*

I have been a volunteer team member now for approx 5 years and am very happy to continue doing so. It is only once a week for a couple of hours or so, and it is easy and satisfying 'work' to do. The benefits we provide affect a lot of people in a very positive way, as they do *need* the food packages we provide and they are appreciative of what we do for them. Gives a 'Feel-Good' factor all round....

*Don*

I've enjoyed yet another year volunteering with Porch Boxes. Still a great, well managed team who pull together & provide support where it's needed. Knowing that help is going directly to local people in need makes the work worthwhile. It's also great to see the generosity of the people of Bury many of whom donate week on week. A big thank you to them.

*Diane*

It's been another strange year – I feel very lucky for me and my family to have survived relatively unscathed. Porch Boxes and other foodbanks should not be necessary in this day and age but instead meet an essential need for others not so fortunate

*Andy*

I have been volunteering at Porch for a number of years now, and enjoy working with a really friendly, like minded, crew. The work we do is sadly essential and I count it a privilege to be involved. Our Covid working practices are much more efficient and effective which is brilliant.

*Steve*

I have been a volunteer with porch boxes for about 8 years now and still amazed by the work they do and the amount of people that are helped . All the volunteers are still protected from covid 19 by the continued use of separate work stations and a 2 shift system. Everyone at Porch Boxes works extremely hard, we are a fabulous team. and I am very happy to be part of it .

*Andrea*

### **Harvest Donations 2021**

Our thanks go to all those many people and organisations who have given gifts of help, food, goods or money. These include;

All Saints Church [St. Francis House] & St.Francis Ladies Club  
Asda Bury [weekly collection trolley]  
Asda Radcliffe [weekly collection trolley]  
Asda Pilsworth [weekly collection trolley]  
Asda Foundation

Bolton Road Methodist & Playgroup  
Brandlesholme Methodist Church  
Bury URC  
Bury Church High School

Cams Lane Community Primary School  
Chesham Community Primary School  
Christ Church Ainsworth  
Christ Church Ainsworth CE Primary School  
Christ Church Walmersley  
Christ Church Walshaw Church  
Christ Church Walshaw CE Primary School  
Church of the Latter Day Saints Sunnybank

Dundee URC

Elton CP School  
Elms Bank School  
Emmanuel Church Holcombe

Fairfield community Primary School

Gorsefield CP School  
Greenhill Community Primary School  
Greenmount URC  
Greenmount Old School

Holcombe Brook CP School  
Holcombe Emmanuel Church  
Holcombe Emmanuel CE Primary School  
Hoyle Nursery School

Mersey Drive Community Primary School  
Millwood School  
Morrisons Whitefield [weekly collection trolley]  
Morrisons Ramsbottom [weekly collection trolley]

Old Hall Community Primary School

Radcliffe URC

Parrenthorn High School

Prestwich & Whitefield W.I.  
Prestwich Methodist Church

Seedfield Methodist Church & local Community  
Stand URC

St. Andrews CE Primary Radcliffe  
St. Andrew's Church Radcliffe  
St. George's Church Simister  
St. Hilda's CE Primary School Prestwich  
St Hilda's CE Church Prestwich  
St. John with St. Mark CE Primary School  
St. John & St. Mark CE Church Seedfield  
St. Marie's RC Primary School  
St. Margaret's CE Church Prestwich  
St. Margaret's CE Primary School Prestwich  
St. Mary's Church Hawkshaw  
St. Mary's Church Radcliffe  
St. Mary's RC Primary School Radcliffe  
St. Mary's Church Prestwich  
St. Mary's CE Primary School Prestwich  
St. Mary's C.E. Primary School Hawkshaw  
St. Paul's Church Ramsbottom  
St. Stephen's CE Primary School  
St. Stephen's Church  
St. Thomas Church  
St. Thomas C.E. Primary School Bury  
St. Thomas & St. John Church Radcliffe  
Summerseat Methodist Church  
Sunnybank Community Primary School

The Tottington Centre  
Tottington Methodist Church

Village Greens Community Co-operative Store, Prestwich

Wesley Methodist Church  
Whitefield Methodist Church  
Woodbank Primary School

### **Christmas Donors 2021**

Argos Bury  
DTE Business advisors Bury  
Horsefield & Smith Accountants Bury  
St. Michael's RC Primary School Whitefield  
Lowercroft Community Primary School  
Tottington High School via Jackie Postle  
Tottington Methodist Church & Tottington Centre and community  
Church of Latter Day Saints

Nationwide Building Society  
Brett Nelson Prestwich Family Martial Arts Club  
The stable Leisure Club Lavender Hotels [The Bolholt]  
Tottington Community Primary School  
Heaton Park Community Primary School  
Ramsbottom Tesco via Tracey community champion  
Sambro on Dumers Lane via Clare Ward  
Occupational Therapy Dept @ Fairfield General Hospital  
Bam Nuttall  
Sai Organisation  
Keeley @ Crown Energy  
Whittaker Lane Medical Centre Prestwich  
The Monday singers via Mildred D'Amore Besses URC  
Seedfield Methodist Church and the local community  
St. Mary's CE Primary School Prestwich  
St. Mary's RC Primary School Radcliffe  
Arvind Shori and supporters  
Bury College student donations via Dave mottishead and Tammy Davies  
Bolton Road Methodist Church & the playgroup located in the building  
Whitefield and Prestwich WI  
Valley Blinds Bradley Fold  
Victoria Hotel Walshaw  
Wilds Ltd Accountants Radcliffe  
Bury Veterans Association  
KSD Martial Arts Prestwich  
Ramsbottom Soroptomists  
Wednesday Art Group  
Ainsworth Friends of the Delph

### **Financial Donations**

Bury Christian Fellowship  
Bury Lodge of Relief  
Chapter of Beauty  
Fairfield General Hospital  
Groundwork [Tesco]  
Healthy Investment  
Kiklees Valley PCC  
Skipton Building Society

### **The Garden Bin collectors**

Diane Gaunt [Greenmount]  
Hayley Pendlebury [Woolfold]  
Joanne Trueman [Tottington South]  
Gill Handley [Holcombe Brook]  
Annette Alderson [Tottington Central]



Pam Martin [woolfold]

### **Additional Thank you**

Bury Signs Ltd

Madeleine Archer for maintaining the website and managing social media

### **Note**

**In addition to these lists there are many individuals who just leave donations with us and no names.**

**Also some donations are collected from other drop off points various places in the Borough and we do not always have records of who these donors are**

**Additional financial donations are also recorded in the accounts section.**

### **Referral agencies 2021**

We have provided packs/stock to the following agencies during 2021.

#### **Bury Metropolitan Borough**

Access and Crisis Team (Mental Health), Fairfield Hospital

Achieve Bury formerly Bury Drug and Alcohol Team

Attic

BAWCS

Beacon VCFA

Bethany Project (Adullam Homes)

Brandlesholme Foodbank

Bury Out of hours Emergency Social Care Team Bradley Fold

Bury Drug and Alcohol Team - now called Achieve

Bury MBC, housing Resettlement Team, Town Hall

Bury MBC, Adult Services (Social Care)

Bury MBC, Bury Community Support Fund

Bury MBC, Children's Services Advice and Assessment now IAT

Bury MBC, Children's Services Safeguarding Team

Bury MBC, Community Mental Health Team - Humphrey House

Bury MBC, Education Department, Parent Support Advisers  
Bury MBC, School Attendance Team  
Bury MBC, Social Services Textile Hall  
Bury MBC Travellers Service  
Bury MBC Rapid Response Team Textile Hall  
Bury Care Leavers [The Through Care Team] Now CASS  
Bury Young Carers  
Bury College

Calico Floating Support Housing  
CAP  
Castlecroft House & Peel Lodge [Bury young People]  
Chesham TRA  
Chesham Foodbank  
Creative Support Limited, Ormrod Court  
Creative Living Centre

Early Break, Radcliffe  
Eastward Community Primary School  
Ellen Court, Radcliffe, Great Places Housing Group  
Elton Community Primary School  
Early Help Teams at Redvales Children Centre

Fairfield Community Primary School  
Fairfield Hospital Ward 18 Discharge lounge [Elderly Patients]  
First Point Families Radcliffe  
Fusion Care

Greater Manchester Probation Service, Bury  
Gorsefield Community Primary School

Health Visitor Teams, Community Nursery Nurses throughout the Borough  
Home Treatment Team - Irwell Unit, Fairfield Hospital  
Housing First  
Irwell Valley Homes  
Ingeus

Manna House  
Milltown House

NASS Families

Park View Community Primary School  
Pennine care - Nursing Teams, Family Practitioners and Health Visitors Various  
Phillips High School  
Prestwich Jobcentre  
Prosupport

Rachel House (Barnardos)  
Radcliffe Primary Care Centre Health visitors  
Ramsbottom GP's  
Rammy Pantry  
Rossendale Food Box Scheme

Safenet  
Spring Lane School  
Springs TRA  
St. Andrew's Pantry Whitefield  
St. Margaret's Church Prestwich  
St. Paul's CE Primary School  
St. Stephen's CE Primary School  
Staying Well Team

Topping Fold TRA  
Tottington High School  
Trusthouse

Women's Housing Action Group, Bury  
Women Of Worth

Youth Justice Nurse

### **Rochdale Metropolitan Borough**

Gabriel Court Rochdale (Barnardos)  
Greater Manchester Probation Service, Rochdale  
Langley Children Centre  
Petrus Floating Support  
Rochdale MBC, Children in Care Team  
Rochdale MBC, Social Services, Young People's Support Team  
Rochdale and Oldham Probation Service  
Stepping Stones, Ashburn House - Heywood  
Stepping Stones, Redfern House Rochdale  
Women's Housing Action Group, Rochdale (Refuge, Rose Court and Tenancy Support)

### **Elsewhere**

Back up [Bolton Young People]  
Bolton Social Services, Homelessness Unit, Benjamin Court  
City Heart  
Out There (supporting families of prisoners), Hulme  
P3  
Rochdale Road, Bolton Caritas  
Refugee Action

## PORCH BOXES

### GENERAL FUND INCOME AND EXPENDITURE ACCOUNTS FOR THE YEAR 1<sup>st</sup> JANUARY 2021 TO 31<sup>st</sup> DECEMBER 2021

[All funds are restricted]

Item	2021	2020 (for comparison)	2022 Budget
<b>INCOME</b>			
<b>Grants</b>			<b>0.00</b>
Bury Council	0.00	10000.00	
Ring-Fenced Funds transfer	0.00	1000.00	
<b>Donations</b>			<b>20000.00</b>
Individual Donations	11269.21	11476.50	
Donations via Enthuse	19081.27	18072.56	
Gift Aid Tax Reclaim	4091.08	3043.82	
Bury Christian Fellowship	500.04	500.04	
Kirklees Valley PCC	120.00	760.62	
Benevity Portal	52.12	57.69	
BAM Nuttall	500.00	0.00	
St Margarets	605.00	0.00	
Healthy Investment	2000.00	500.00	
Groundwork	1125.00	0.00	
Tottington Centre	2000.00	235.00	
Skipton Building Society	60.00	0.00	
St Georges Simister	50.00	0.00	
St Thomas & St John	100.00	200.00	
Bury Lodge of Relief	150.00	0.00	
Fairfield Primary School	168.61	0.00	
Chapter of Beauty	150.00	0.00	
Asda Foundation	200.00	300.00	
The Monday Singers	500.00	0.00	
Fairfield General Hospital	170.00	0.00	
CJP Financial Services Ltd	0.00	4400.00	
Rowlands Methodist Church	0.00	1000.00	
WHN Solicitors	0.00	2000.00	
Fragrance Oils	0.00	1000.00	
Bury North Constituency	0.00	100.00	
PM&M Solutions	0.00	280.00	
Hazelhurst CPS	0.00	21.00	
Places for People	0.00	500.00	
Brambles Collection	0.00	63.51	
Antioch Christian Bookshop	0.00	500.00	
Radcliffe & Prestwich Synod	0.00	30.68	
Parish of Holcombe & Hawkshaw	0.00	243.00	
Christ Church Walmersley	0.00	50.00	
Education Welfare Team	0.00	90.00	
Duchy of Lancaster Benevolent	0.00	1500.00	
Manchester Guardian Society	0.00	1000.00	
St Marie's Primary School	0.00	300.01	
Bolton Road Methodist Church	0.00	310.00	
St Mary's C of E Primary	0.00	179.80	
St Paul's CE Primary School	0.00	48.00	
Lowercroft Primary School	0.00	552.84	
Old Hall Primary School	0.00	433.31	
Millwood Special School	0.00	35.50	
Ramsbottom Children's Centre	0.00	60.00	
D & E Motors	0.00	100.00	
<b>TOTAL</b>	<b>42892.33</b>	<b>60943.88</b>	<b>20000.00</b>

<b>Item</b>	<b>2021</b>	<b>2020 (for comparison)</b>	<b>2022 Budget</b>
<b>EXPENDITURE</b>			
Purchase of Items for Packs	5193.37	9855.54	12000.00
Purchase of items for Xmas	3791.53	741.70	5000.00
Insurance	663.92	646.00	1000.00
Postage/Stationery etc	36.24	66.48	200.00
Charity Checkout Subscription	239.99	239.99	300.00
Rent	500.00	500.00	0.00
Contingency/Sundries	579.39	758.44	1500.00
Transfer to Reserve Fund	60000.00	0.00	0.00
<b>TOTAL</b>	<b>71004.44</b>	<b>12808.15</b>	<b>20000.00</b>
<b>NET SURPLUS / [DEFICIT]</b>	<b>[28112.11]</b>	<b>48135.73</b>	

#### RECONCILIATION OF FUNDS

	<b>2021</b>	<b>2020 [for comparison]</b>
	<b>£</b>	<b>£</b>
Brought Forward	73940.48	25804.75
Net Surplus [Deficit]	[28112.11]	48135.73
<b>Carried Forward</b>	<b>45828.37</b>	<b>73940.48</b>

#### NOTE TO ACCOUNTS

1. Routine provision of crisis pack contents and the provision of volunteer effort are of a non-monetary value and do not therefore show in the accounts either as income or expenditure.

**RESERVE FUND INCOME AND EXPENDITURE ACCOUNTS  
FOR THE YEAR 1<sup>st</sup> JANUARY 2021 TO 31<sup>st</sup> DECEMBER 2021**

<b>OPENING BALANCE 1<sup>st</sup> JANUARY 2021</b>	<b>0.00</b>
--	-------------

**INCOME**

Transfer from General Fund	60000.00
----------------------------	----------

**EXPENDITURE**

NO ACTIVITY

<b>CLOSING BALANCE 31<sup>st</sup> DECEMBER 2021</b>	<b>60000.00</b>
--	-----------------

**NOTE TO ACCOUNTS**

The reserve fund of £60000 has been put in place to protect the Charity should the rent free use of the Bradley Fold unit be withdrawn at any point in the future. It is intended to cover accommodation costs in the short term and has been estimated as 24 months at an assumed monthly rent of £2500.

**RING FENCED FUNDS [BURY MBC] INCOME AND EXPENDITURE ACCOUNTS  
FOR THE YEAR 1<sup>st</sup> JANUARY 2021 TO 31<sup>st</sup> DECEMBER 2021**

**INCOME**

<b>OPENING BALANCE 1<sup>st</sup> JANUARY 2021</b>	<b>6364.85</b>
--	----------------

NO ACTIVITY

**EXPENDITURE**

NO ACTIVITY

<b>CLOSING BALANCE 31<sup>st</sup> DECEMBER 2021</b>	<b>6364.85</b>
--	----------------

**NOTE TO ACCOUNTS**

The use of this remaining ring fenced money is to be determined by Bury MBC. Porch Boxes are merely acting as custodians

**Original signed by Michael Perrin**

**Date 31<sup>st</sup> January 2022**

## **Independent Examiner's Report to the Trustees of Porch Boxes**

I report on the accounts of the Trust for the year ended 31<sup>st</sup> December 2021.

### **Respective Responsibilities of Trustees and Examiner**

The charity's Trustees are responsible for the preparation of the accounts. The charity's Trustees consider that an audit is not required for this year under section 144(2) of the Charities Act 2011 (the 2011 Act) and that an independent examination is needed.

It is my responsibility to:

- \* examine the accounts under section 145 of the 2011 Act

- \* to follow the procedures laid down in the general Directions given by the Charity Commission under section 145(5)(b) of the 2011 Act

- \* to state whether particular matters have come to my attention

### **Basis of Independent Examiner's Report**

My examination was carried out in accordance with the general Directions given by the Charity Commission. An examination includes a review of the accounting records kept by the charity and a comparison of the accounts presented with those records. It also includes consideration of any unusual items or disclosures in the accounts, and seeking explanations from you as Trustees concerning any such matters. The procedures undertaken do not provide all the evidence that would be required in an audit and consequently no opinion is given as to whether the accounts present a 'true and fair view' and the report is limited to those matters set out in the statement below.

### **Independent Examiner's Statement**

In connection with my examination, no matter has come to my attention:

(1) which gives me reasonable cause to believe that in any material respect the requirements:

- \* to keep accounting records in accordance with section 130 of the 2011 Act

- \* to prepare accounts which accord with the accounting records and comply with the accounting requirements of the 2011 Act

have not been met; or

(2) to which, in my opinion, attention should be drawn in order to enable a proper understanding of the accounts to be reached.

### **Original Signed by Harold Baxter**

**Relevant professional qualification or body: None**

**9<sup>th</sup> March 2022**

### **STATEMENT OF MANAGEMENT COMMITTEE RESPONSIBILITIES**

Charity Law requires the trustees of the Management Committee to prepare financial statements for each financial year, which give a true and fair view of the state of affairs for that Charity, and of the results of the Charity for that period.

In preparing these financial statements, the trustees are required to:

- Select suitable accounting policies and then apply them consistently
- Make judgements and estimates that are reasonably prudent
- Prepare the financial statements on the 'going concern' basis unless it is inappropriate to presume this charity will continue in business

The Trustees are responsible for:

- Keeping proper accounting records which disclose with reasonable accuracy at any time the financial position of the charity and enable them to ensure that the financial statements comply with the Charities Act 1993.
- The safeguarding of the assets of the charity and hence for taking reasonable steps for the prevention of fraud and detection of other irregularities.

## **Declaration**

The trustees declare that they have approved the trustees' report above.

Signed on behalf of the charity's trustees



**Treasurer**

March 2022



**Julia Rowlands**  
**Chair**

**Michael Perrin**