

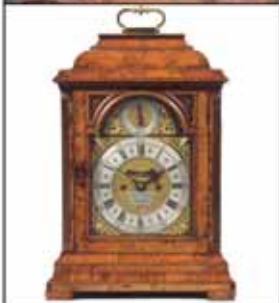


**FRIENDS OF
GLOUCESTER
CATHEDRAL**

ANNUAL REPORT 2022

NO. 86





Chorley's

Auctioneers & Valuers of
Fine Art & Antiques

Free Auction Appraisals

Valuations for Insurance,
Probate & Family Division

Online catalogues &
global internet bidding

Member of the Society of Fine
Art Auctioneers & Valuers

Chorley's
Prinknash Abbey Park
Gloucestershire GL4 8EU

Tel: 01452 344499
enquiries@chorleys.com
www.chorleys.com



Leapfrog

FOOD & HOSPITALITY PR

ONE JUMP AHEAD

Need a media relations campaign?

Does your digital marketing and social media need
rejuvenating?

Looking for fabulous, great value video and visual content?

Need a reliable events team to take care of your experiential
work?



@Leapfrogpruk



@Leapfrogbuzz



@LeapfrogPR

Check out our website www.leapfrogpr.com or contact
us 01242 282000 or email info@leapfrogpr.com

Our passionate and
hard-working team delivers
inspiring, results-focused
work closely aligned with
your business goals.



CONTENTS

Editorial <i>Editorial Committee</i>	02
From the Interim Dean <i>Canon Dr Andrew Braddock</i>	03
Annual Report from the Chairlady of the Friends <i>Margaret Austen</i>	04
Annual Report from the Honorary Secretary of the Friends <i>Rob Ingram</i>	07
Annual Report from the Events and Fundraising Committee <i>Rob Ingram</i>	09
Notes on Events <i>Sally Annesley</i>	10
Project Pilgrim Phase Two: Beacon of Hope <i>Anne Cranston</i>	13
Annual Report from Gloucester Cathedral Architect <i>Antony Feltham-King</i>	14
Alexandra McConnell	15
New Roles: Recent Photographs	16
In Remembrance and New Members	17
The Friends of Gloucester Cathedral Expenditure and Income 2017–2021 (graphs)	19
The Friends of Gloucester Cathedral Grants Awarded in 2020 and 2021 (graphs)	20
The Friends of Gloucester Cathedral Report of Council	21
Statement of Financial Activities for the Year Ended 31 December 2021	27
Balance Sheet as at 31 December 2021	28

EDITORIAL

Editorial Committee*

Welcome to the ***Friends of Gloucester Cathedral Annual Report No. 86, 2022.***

This Report will be presented at the Annual General Meeting on 9 July 2022.

Our chairlady, Margaret Austen, provides a comprehensive account of the achievements and activities of the Friends over the last year, a period when we have all had to contend with ongoing Covid restrictions. A limited Annual General Meeting was held in July last year; this was followed by a very successful Friends' Day, packed with activities, in November. We are again having a short event in July, which will be followed by a Carol Concert in December. The Friends' Council has continued to meet, at first online and more recently in person.

A potential new trustee has been proposed and there will be a vote on her appointment at the AGM.

This year has seen some changes in the Cathedral. Canon Celia Thomson retired in February; it is anticipated that her successor will be appointed later this year. The Very Revd Stephen Lake, our former Dean, departed early in April, and was consecrated as Bishop of Salisbury on 25 April. Canon Dr Andrew Braddock was commissioned as Interim Dean on 13 April. A new Dean is likely to be in post within a year. We include a selection of photos from the respective ceremonies.

Anne Cranston, Head of Projects, reports that the National Lottery Heritage Fund has approved the Cathedral's Expression of Interest for Project Pilgrim Phase Two: Beacon of Hope. The Cathedral Architect, Antony Feltham-King, summarises the work done on the Cathedral fabric, mainly repairs to masonry.

The Report of Council and Abbreviated Accounts are augmented by graphical representations of Income and Expenditure and of Grants made. We record the names of new members as well as those who have died in the last year (or of whose death we were notified in the year).

The Events and Fundraising Committee reports that despite the Covid restrictions it has been possible to hold a number of lectures (see the report on Joan Tucker's talk). Visits and more lectures are planned in the next few months.

PS. Watch out for an intriguing story from the Archives in the Autumn Newsletter.

****Mary Chapman, Susan Faircloth, Ann Lewis, Felicity Read***



Photo © Marcus Green

FROM THE INTERIM DEAN

It was with a mix of emotions that we said farewell to Dean Stephen at the beginning of April. We will miss him hugely, but are delighted that he has been called to episcopal ministry as Bishop of Salisbury.

As I remarked at the end of Stephen's farewell service, his time with us has seen a number of notable 'firsts'. Project Pilgrim saw the first solar array placed on an ancient cathedral building

and enabled the whole of the Cathedral church to be accessible from the South Porch to the Lady Chapel. Stephen led the Cathedral in greeting new audiences and events, from skate parks and football in the nave, to Gaia and Museum of the Moon. He introduced Carols on the Hour, packing the nave over and over again, and enabled the introduction of girl choristers. And when the pandemic caused the first closure of the Cathedral building in 800 years, Stephen led us in difficult times with care and compassion. In all this, Stephen exemplified what it means not only to say 'welcome to your Cathedral' but to live that out, so that Gloucester Cathedral can be more and more a place for all people.

As the Cathedral enters a new season in its life, we build on these firm foundations with a strong sense of being 'Team Gloucester' across our worshipping community, staff and volunteers. The Friends are a key part of this team. As I step into the role of Interim Dean, I take huge strength from the wonderful support and encouragement that the Friends provide. Thank you.

It is anticipated that a new Dean will be appointed towards the end of this year, with their welcome and installation happening by Easter 2023. In the meantime the Cathedral will continue to press on with its ambitious plans for the future, completing our journey into being a world-class heritage destination and using our assets to benefit the common good.

I am delighted that the Project Pilgrim 2 plans reported on last year have got through their first major test with the National Heritage Lottery Fund, paving the way for a formal Round One bid in late 2022 or early 2023. This is a major achievement and a credit to the team. Chapter has also formally agreed to the rebuilding of our historic organ. Its technical failure on the eve of Holy Week underlined the importance of this work, not only to secure the future

of this fine instrument, but because it is at the heart of both our musical tradition and our ability to host and accompany a huge range of services for the Cathedral and wider community.

In all this, the life of the Cathedral continues to be built around the daily rhythm of worship, prayer and hospitality. In a world in which much seems dark and uncertain, from the war in Ukraine to the climate crisis and the slow recovery from the pandemic, it is this rhythm that keeps us anchored in the love of God, inspiring us to be a place of generous welcome for all. With the continued support and partnership of the Friends, we look to the future with confidence and hope.

Canon Dr Andrew Braddock, Interim Dean of Gloucester



Photo © Oscar Rook

ANNUAL REPORT FROM THE CHAIRLADY OF THE FRIENDS

2021 was another year which was severely impacted by the Covid pandemic. Council met via Zoom in February and April. We were delighted to be able to hold the AGM in person in July, and to meet as Council in person from September. A number of tasks we planned to carry out this year have, yet again, had to be postponed, as have some events.

After a small AGM with Covid still hanging over us, we held a special Friends' Day in November with a packed programme. The advantage of a Friends' Day at that time of year was that we had the Cathedral much more to ourselves. We have had some very positive feedback, and one of the aspects members seemed to like especially was having the Chapter House open all day with refreshments available, to enable relaxation and conversation. Friends' Day this July is planned to be a modest event because, at the time of planning, Covid is very much with us and causing cancellations again.

I am sure we have all been very sad to see Dean – now Bishop – Stephen depart. We wish him every blessing in his new office – Salisbury's gain will be our loss! Dean Stephen has made an enormous contribution to the work of

the Friends in recent years and under his guidance the Friends and the Cathedral team have come to work together much more closely. His last service in the Cathedral was a memorable occasion.

Canon Dr Andrew Braddock, in his role as Interim Dean, is now a member of Council and is involving himself enthusiastically in Friends' affairs.

We were very sad that our President, The Lord Vestey, died in February 2021. He was a dedicated and generous supporter of the Cathedral and the Friends and will be much missed. A splendid memorial service was held for him and The Lady Vestey (who died shortly before Lord Vestey) in London in May 2022 and the Friends were represented at the service. We have been delighted to welcome The Hon. Hugh Tollemache as our new President, and he has already been showing enthusiastic support and encouragement for the Friends.

The work on the North Ambulatory was completed in 2021. The scaffolding has been moved to the north side of the Nave, where the stonework needs restoration; a number of pinnacles need to be replaced; incorrect pointing must be remedied, and defective rainwater goods replaced.

Pilgrim 2, subtitled 'Beacon of Hope', was unfortunately delayed by the pandemic but the Round One application will go in later in 2022 or very early in 2023. Substantive work is unlikely to start until 2024. The details of what will be included in Pilgrim 2 are still being worked on, but goals will include improving the whole experience of visiting the Cathedral and ensuring sustainability, as well as ongoing work on the fabric. The Cathedral has convened a Development Board to commence seeking the match funding which will be needed.

The trustees who were appointed in 2020 have been settling into their roles brilliantly and making a great contribution. Tony Wilton-Steer has been chairing our development committee and was appointed as Vice-Chair at the Council meeting in November 2021. Marcus Green and Felicity Read are also on the development committee and Felicity has been chairing the newsletter committee, which produces both hard copy and e-newsletters. Marcus has also been taking some great photographs which enhance all our publications.

Council is doing more work through committees now, to increase the amount we are able to do and to involve people with expertise who are not members of Council. We now have the following committees: Events; Investments; Newsletters; Development (which has been working with the Cathedral team

on a new website and branding, and updating our publications, along with ideas for trying to expand our membership); Legacies; Constitution and conversion to a Charitable Incorporated Organisation. A list of the members of each committee may be obtained from the Friends' office.

You will see elsewhere in this newsletter that Alexandra McConnell has been proposed as a new trustee. Upon her appointment there will be one current vacancy for a member of Council. We would be very grateful to hear from anyone who would like to become a trustee. We have carried out a skills audit of the members of Council and this is reviewed on an ongoing basis, bearing in mind changes to the trustee body. Looking forward to July 2023, I shall step down as Chair and Carolyn, Lady Elwes, will also come to the end of her term of office. We would particularly welcome someone to assist with our events.

I have not received any comments on the plan I outlined in the Spring newsletter to set up a new Charitable Incorporated Organisation (CIO); to transfer to it the assets of the Friends and then to dissolve the current charity. Council has therefore approved progressing this plan and we now have the consent of the Charity Commission to amend the Constitution to allow the planned transfer of assets to the new CIO. Resolutions will be proposed at the AGM for the members to give approval in principle to the transfer and to amend the Constitution. If these are passed, an application will be made to the Charity Commission to register the new CIO and it is hoped that it will be possible to effect the transfer at an extraordinary general meeting of members which Council plans will take place immediately before the carol concert on 15 December 2022. This timetable is entirely dependent on the Charity Commission.

We have been sending regular e-newsletters to our members, and these seem to be very well received. If you are not on our mailing list, but would like to be, please let Claire Saunders have your email address. We are very grateful to Theo Platt and all the Cathedral's development team for their enormous help with our publications. Look out for the new Cathedral website which was launched recently, and for the new branding for both Cathedral and Friends' publications (for which grants were received).

The offer of free membership for a year to Cathedral volunteers was well received and we have recruited 142 new members. Council also hopes that this offer will have helped the various groups of volunteers within the Cathedral to work together more, as it demonstrates an appreciation of the many and varied roles they undertake.

We are especially grateful to Catherine Girdler who asked for donations to the Friends in lieu of flowers at the funeral of her husband Michael, who sadly died last year.

We are also very grateful to Susan Faircloth and her team for the enormous amount of work they put into our hard copy publications. Susan has been a brilliant editor – meticulous and thorough, and very thoughtful in assembling the content of these publications. We are extremely sorry that Susan feels that it will be time for her to retire next year. We would be delighted to hear from anyone with editorial experience to take over her role.

We have made some progress in collating an archive of old newsletters, and this will be indexed by Susan Faircloth, so that it will be in an accessible and searchable form. We are still missing some and, if you have copies, please do contact Claire Saunders.

As always, I am immensely grateful to Rob Ingram, our Honorary Secretary, Tim Watkins, our Honorary Treasurer and Claire Saunders, our office administrator, for their enormous support and commitment to me and the Friends; also, to Emily MacKenzie, Theo Platt and the Cathedral team for all their help and support.

Margaret Austen, Chairlady



Photo © Oscar Rook

ANNUAL REPORT FROM THE HONORARY SECRETARY OF THE FRIENDS

My report last year began thus:

“ This has been a very strange year in the life of the Cathedral, with so much of its normal life having to be radically adapted in its reaction to the Coronavirus. ”

It's good to be able to report that the past year has been one of constant efforts to emerge from these difficulties, and resume 'normal operations' as far as possible. The Cathedral deserves credit for its constant monitoring of the situation, keeping abreast of relaxations of restrictions. The joy of being able to sing without masks!

The Friends Council has done everything it can to 'keep the show on the road' and continue providing our members with a varied range of events, as described in the Events Committee report elsewhere in this Report. We have continued to expand our membership, with whom we have kept in touch via regular e-newsletters. We very much hope that the Cathedral volunteers who were able to enjoy one year's free membership will continue to remain members.

Much of our improved communication with our membership has been made possible with the support of Aileen Ravey, the Cathedral's Development Officer, and Ellie Fells, the Digital Communication Officer, whose skills have been put to good use in providing attractive and accessible articles in the e-newsletters.

The Friends' Council has continued to meet regularly (now in person) to provide the essential decision-making process and sounding-board for new ideas. We are fortunate to have so many Council members with superb skills in their different areas of expertise. We have continued to work closely with Emily MacKenzie, the Chapter Steward, and Theo Platt, Head of Development, developing the links between the Friends and the Cathedral.

Claire Saunders and I have become used to communicating remotely, so spend little time in the office. Claire continues to be a highly professional and skilful administrator, always able to provide crucial information and technical skills with speedy efficiency. I am very fortunate indeed to be able to work with her.

Margaret Austen, our Chairlady, has worked tremendously hard to guide us in our decision making. Her professional skills and leadership continue to be an inspiration in enabling the Friends Council to make the progress to which it aspires. I am very grateful to her for her friendship and support.

Rob Ingram, Honorary Secretary

ANNUAL REPORT FROM THE EVENTS AND FUNDRAISING COMMITTEE

I am pleased that in contrast to last year's disappointing account of the year's proceedings, this report is much more positive. After all the cancellations and postponements that characterised last year's report, this one describes a series of events that have all taken place.

In our series of lectures our members enjoyed a wide range of topics, including the following:

- Sally Annesley on Sir William Compton
- Professor Tom James on the effects of the Black Death
- Dr Richard Fisher on 'Swapping the Abbot for a Dean'
- Professor Nick Mann on the foundation of the Anglo-Saxon Minsters
- Dr Richard Fisher (again) on the manifestation of Romanesque and Gothic architecture at Gloucester Abbey
- Joan Tucker on Gloucester's medieval monuments
(see Sally Annesley's report on this elsewhere in this report).

In addition to these, Derek Conaty, Team Leader of the Cathedral Guides, gave a fascinating series of six superb **tours around the Cathedral** (assisted by other Guides) exploring its architecture, covering all the distinct phases of its development. These were very well received by those taking part. We are enormously grateful to Derek for working so hard and sharing his knowledge and expertise.

An **AGM** took place in July, dealing purely with business matters.

In September, a **New Members event** took place, giving those who had recently joined the Friends an opportunity to meet one another and some existing members and to explore some of the Cathedral's more hidden places.

In November 2021 we had a **Friends' Day** on an altogether larger scale than hitherto, featuring a full day of activities into which our members could dip. It was deemed to have been a great success.

At the time of writing, we are very much looking forward to our long-delayed **trip to Berkeley** on 16th May, incorporating a guided tour of the castle, a visit to the Jenner Museum and a tour of St Mary's Church.

As for the future, we have a full range of events planned:

- 29th June, Rod Woodward-Court will give a *talk on Samuel Baldwin's monuments at the Cathedral*, accompanied by lunch
- 9th July, our **AGM** with a brief concert, tea and Evensong will be held
- 4th August, our postponed *trip to Colesbourne Arboretum* will take place
- 5th October, Adrian Rance-McGregor will give a *talk on The Art and Iconography of St George* (see Sally Annesley's introduction to this talk elsewhere in this Report)
- 15th December, there will be a *Friends' Christmas Concert*

Other postponed visits that we hope to rearrange are:

- Hereford Cathedral, in conjunction with the Friends of the Wilson
- Much Marcle church and Hellens
- Worcester College, Oxford

We are grateful to members for their support over the past year, and hope that they will enjoy what we have planned for the coming year.

Rob Ingram, Chairman of the Events Committee



Joan Tucker. Photo © Bob Tucker

NOTES ON EVENTS: SEVEN CHARACTERS IN SEARCH OF A CORPSE

A Talk by Joan Tucker, 12th March 2022

Cathedral guide Joan Tucker described her talk as an amateur cold-case review full of speculation, but it was so much more than this. The audience was treated to an in-depth, thought-provoking and entertaining examination of the seven major medieval monuments from Gloucester's monastery period. In chronological order, Joan told us about them.

* **Prince Osric, d.729**

Osric's rank as both royal and founder of St Peter's Minster would have earned him an important burial place in the Saxon church of his time. When Serlo's Norman abbey was built from 1089, his body or bones might have been placed in the crypt or elsewhere. (Bones could be transferred between old and new churches in reliquary boxes.)

During the 1530s Abbot Parker commissioned a monument for Osric in the north aisle next to the high altar, the favoured resting place for a founder. Shortly after the Dissolution, the antiquarian John Leland learned from a witness that Osric's bones had been moved to the new monument.

* **Abbot Serlo, d. 1104**

From 1072 Serlo transformed a failing community of monks into a thriving monastery. He would almost certainly have been buried in his church. But where is he? The Chapter House or the crypt are possibilities. John Leland tells us Serlo 'lyeth under a faire marble tombe on the south syde of the presbyterye', which is exactly where we can see the possible monument to Serlo today. However, this is a retrospective monument dating from around 200 years after Serlo's death. It shows an abbot with his pastoral staff holding a church, the symbol of a founder. Unfortunately, there is no sign of a burial.

* **Robert, Duke of Normandy, d. 1134**

After 28 years of imprisonment by his brother King Henry I, Duke Robert died in Cardiff Castle. His body was brought to Gloucester Abbey and tradition states he was buried in front of the high altar but there is only room for a shallow coffin here. The burial could have been in the Chapter House where Robert's name is recorded on the walls. The oak effigy in the north ambulatory dates from about 100 years after Robert's death and there is no accompanying body.

* **King Edward II, d.1327**

We believe that, after his murder in Berkeley Castle, the king was buried in the exquisite tomb near the high altar. He was not interred in the middle of the presbytery like King John at Worcester, suggesting that perhaps Serlo or Duke Robert occupied that site. The tomb was opened in 1855 when the remains of a king in a wonderful state of preservation were found. Can we be sure the remains are those of Edward II?

* **Knight and Lady in South Aisle**

This beautiful monument in the South Aisle dates from the early 1400s. The identity of the couple is unknown but they must have been rich and influential to have secured their burial place. They are not buried in their tomb chest. They could lie under the floor nearby, in the south transept or even in another church.

*** *Abbot Seabroke, d. 1457***

We know Abbot Seabroke was buried under the floor of his chantry chapel because his tomb was opened in 1741 and his pastoral staff removed. We know also that his monument has been moved several times but we do not know the exact position of the burial.

*** *Abbot Parker, d.1539***

William Parker, also known as Malverne, commissioned his impressive chantry chapel and monument probably during the early 1530s. He chose a prestigious site next to the tomb of Edward II, close to the high altar and to Osric's monument. Abbot Parker did not live to hand over his abbey to the commissioners in January 1540 at the suppression of the monastery. He died somewhere in June the previous year. We do not know where Abbot Parker is buried.

Gloucester Abbey's medieval burials remain a mystery. Even after Joan's impressive research we do not know with certainty if or where the seven characters are buried.

Sally Annesley, Cathedral Guide

THE ART AND ICONOGRAPHY OF ST GEORGE, ENGLAND'S PATRON SAINT

A Talk by Adrian Rance-McGregor, 5th October 2022

St George is perhaps unique both in the enduring popularity of his cult and in the widespread devotion to the saint around the world, from England in the west to India in the east, from the Baltic states in the north to Ethiopia in the south. This talk will explore the origins of the cult of St George in the Byzantine Empire and its spread across Europe. The Normans adopted him as the patron of the new form of mounted warfare and, thanks to his saving the First Crusade from disaster with his miraculous appearances in support of the Norman knights, kings and princes across Europe also adopted him. The talk will explore his emergence as patron saint of England, then follow his transformation from warrior to courtly hero in Renaissance art and thence into the gentleman knight of the British Empire. The talk will conclude with a look at the contemporary interest in St George as part of a resurgence of English national identity.

Sally Annesley, Cathedral Guide

PROJECT PILGRIM PHASE TWO: BEACON OF HOPE

National Lottery Heritage Fund: Expression of Interest Success!

In the spring, we had the exciting news that the National Lottery Heritage Fund (NLHF) has approved our Expression of Interest (EOI) for Project Pilgrim Phase Two: Beacon of Hope. That means we can now submit a full Round One application and work to shape the project can begin in earnest. Over the next 12 months, we will be looking to:

- Consult widely to ensure our proposals
 - meet local need and opportunities
 - appeal to the widest range of people
 - contribute to the recovery of the city and county from the pandemic
- Undertake investigations and create concept designs for building and landscaping work, including visual representations to bring our ideas to life
- Test activities with our Learning and Participation Team
- Agree how we intend to work together with our partners
- Work up detailed costs and budgets
- Raise money to match lottery funding
- Create a detailed plan to manage the delivery of such a significant project

We know the EOI process is competitive so this is a wonderful result and gives great confidence as the Cathedral continues its Pilgrim journey.

More details about Project Pilgrim Phase Two will be shared later in the year.

Anne Cranston, Head of Projects

ANNUAL REPORT FROM GLOUCESTER CATHEDRAL ARCHITECT

As is often the case in penning this annual report, it is instructive to look back on the past 12 months, and to look ahead to the coming year.

Over the last few months, the main Cathedral fabric project has been the continuation of the masonry repair campaign on the northern side of the nave. 'Campaign' is an appropriate word, as producing the actual work on the masonry requires military levels of planning and logistical support. Over the winter the work has continued in the masonry workshop but, with the weather conditions improving as spring arrives, the individual stones that have been painstakingly created will be fitted on site. From the tranquillity of the Cloister Garth occasionally the stonemasons can be glimpsed high up on the scaffolding surrounding the parapet of the north transept.



© Antony Feltham-King

There have been changes in personnel in the workshop during this past year, and new apprentice masons have arrived to enjoy the stimulating learning environment which Gloucester provides. Looking ahead to the coming year, the masonry conservation project will continue as the work moves from east to west along the northern side of the nave and north aisle.

In parallel, following the recent encouragement of the National Lottery Heritage Fund (NLHF), the second phase of Project Pilgrim will be developed, ready for a formal submission back to the NLHF within the next 12 months. This will focus on the way in which the Cathedral and its partners can deepen and widen community engagement, as well as on post-Covid recovery for all. Facilities will be updated to accommodate 21st-century requirements, the impacts of the climate emergency and some inspirational developments to help reveal the monastic origins of the Abbey of St. Peter. I am looking forward to working closely with the Cathedral team on the development of this project, alongside key specialist consultants, many of whom were involved in Pilgrim I.



**FRIENDS OF
GLOUCESTER
CATHEDRAL**

**BOOKING FORM
ANNUAL REPORT 2022**

**TUDOR/JACOBAN MONUMENTS BY SAMUEL BALDWIN
A TALK GIVEN BY ROD WOODWARD-COURT—CATHEDRAL GUIDE**

WEDNESDAY 29TH JUNE—12.30PM

POSTAL BOOKING DEADLINE—17TH JUNE

**FRIENDS' DAY 2022—SATURDAY 9TH JULY,
2.30PM CONCERT—3PM AGM—TEA—EVENSONG**

POSTAL BOOKING DEADLINE—30TH JUNE

**TRIP TO COLESBOURNE ARBORETUM
BY KIND INVITATION OF SIR HENRY ELWES**

THURSDAY 4TH AUGUST—4.15PM

POSTAL BOOKING DEADLINE—21ST JULY

**THE ART AND ICONOGRAPHY OF ST GEORGE, ENGLAND'S PATRON SAINT
A LECTURE GIVEN BY ADRIAN RANCE-MCGREGOR**

WEDNESDAY 5TH OCTOBER 2022—2.00PM

POSTAL BOOKING DEADLINE—22ND SEPTEMBER

**We try to make a modest profit from events to help
the Friends support the Cathedral**

Thank you for making this possible

Samuel Baldwin's Monuments at Gloucester Cathedral—Wed. 29th June, Lunch at 1230, informal talk commencing at 1.15pm

Booking deadline: Friday 17th June 2022

Ticket price includes a buffet lunch, glass of wine and tea/coffee

- FOGC Member tickets £20
- Guest tickets £22.50

Friends' Day 2022—Sat. 9th July, Concert 2.30pm; AGM 3pm

Booking deadline: 30th June

No charge for attending AGM (members only), ticket required for tea.

- FOGC Member tea tickets £5
- Guest tea tickets £7.50

Trip to Colesbourne Arboretum—Thurs. 4th August, 4.15pm

Booking deadline: 21st July

Own transport required, price includes a drink after the tour.

- FOGC Member tickets £10
- Guest tickets £12.50

Lecture—The Art and Iconography of St George, England's Patron Saint—Wed. 5th October, 2pm

Booking deadline: 22nd September

Lady Chapel, Gloucester Cathedral; followed by tea

- FOGC Member ticket £10
- Guest tickets £12.50

NB: Our full event bookings policy can be found on the reverse of the booking form

**You can now buy tickets using a credit or debit card via our website:
<https://gloucestercathedral.org.uk/friends/friends-events/>
or at the Gloucester Cathedral Visitor Welcome Desk**

Samuel Baldwin's monuments—Wed. 29th June

FOGC member tickets required @ £20 ... £.....

Guest tickets required @ £22.50 ... £.....

Friends' Day 2022—Sat. 9th July

FOGC member tickets required @ £5 ... £.....

Guest tickets required @ £7.50 ... £.....

Trip to Colesbourne Arboretum—Thurs. 4th August

FOGC member tickets required @ £10 ... £.....

Guest tickets required @ £12.50 ... £.....

Lecture—St George—Wed. 5th October

FOGC member tickets required @ £10 ... £.....

Guest tickets required @ £12.50 ... £.....

Donation to the Friends (optional) £.....

Total enclosed £.....

Physical tickets are no longer being provided. Please enclose an SAE if you *do not* have an email address and require confirmation of your booking.

Send completed forms to: Friends Office, 11a College Green, GLOUCESTER GL1 2LX

Cheques made payable to "Friends of Gloucester Cathedral"

Or by bank transfer to: Sort Code: 30-93-48 Acct No.: 00750513 Ref: Your Name

Payment method (delete as applicable): Cheque/Cash/Bank Transfer

Please provide an email address (preferred) and/or telephone number in case we need to contact you about any event

Name(s).....

Friends' Membership Number (if known—printed on mailing address sheet).....

Address.....

.....

Telephone.....Email address.....

I consent to the Friends contacting me by email with news and details of other events. Yes/No

I consent to the Friends contacting me by email with news and details of Cathedral events Yes/No

Signed

Future Visits

We are now starting to reschedule our planned trips, and hope the following additional visits will be able to take place in 2022 or 2023.

Visit to Worcester College, Oxford

Friends' Carol Service in the Cathedral (15th December 2022)

Trip to Hereford Cathedral

Day trip to Much Marcle, including a visit to Hellens

Friends Event Bookings Policy

With the move to enhanced online booking we have ceased the provision of physical tickets. Entry to events will be based on a guest list of ticket holders. Online or email bookings will automatically receive a confirmation of booking. Email confirmation will be provided where possible, please enclose an SAE with your ticket application if acknowledgement of a postal booking is required and you *do not* have an email address.

Tickets will be promoted in Friends publications, along with a booking form which should be returned to the Friends Office: 11a College Green, Gloucester, GL1 2LX

- Tickets can also be purchased online via www.fogc.co.uk or reserved by sending an email to office.administrator@fogc.co.uk, supported by a bank transfer, or cheque. Please remit the necessary funds as detailed on the booking form, and send an email with the details of tickets required.
- Our preferred method of payment is bank transfer, which enables us to give more of your ticket money to Gloucester Cathedral
- Entry to events will be based on a guest list of ticket holders, rather than physical tickets.
- Refunds will not be given after the booking deadline has passed, unless an event is sold out and the ticket can be resold.

As always, the Friends of the Cathedral are key to the success of these projects, with your unstinting encouragement and support.

Finally, I must take the opportunity of recognising other key people who have left Gloucester in recent months. Canon Celia Thomson has been Gloucester's 'building fabric canon' during my tenure here and it has always been a pleasure to work with her. She has an understated demeanour which conceals her tenacity and thoroughness, and the many completed fabric projects stand testament to her time at Gloucester. And Stephen Lake's 11 years as Dean have seen many developments and I shall miss his drive and direction coupled with his unmatched ability to 'build the team'. I wish them both well in their future paths, Celia in 'retirement' in Northumberland and Stephen taking up the position of Bishop of Sarum, becoming a fellow-resident of the Salisbury Cathedral Close!

***Antony Feltham-King, Gloucester Cathedral Architect
Salisbury April 2022***



ALEXANDRA McCONNELL

Alexandra McConnell has been proposed to fill one of the two vacancies for Friends' Trustees. Alexandra introduces herself as follows.

Alexandra McConnell (Ally) has lived in Gloucester since 2011, having moved here from Exeter. She has worked since 2017 for Gloucestershire Archives. Focuses and interests in her work include engineering heritage, and she has a special interest in working with the local and wider

communities to promote and preserve heritage. Although not from Gloucestershire, her grandfather was a vicar in the Gloucester Diocese and her father grew up in the area.

Outside of work, she sings and plays the flute/piccolo (as an amateur). She is also a beekeeper, lover of classical music, and in her spare time enjoys walking, running and reading.

NEW ROLES: RECENT PHOTOGRAPHS



Bishop Stephen at his last service as Dean



Bishop (then Dean) Stephen with gift from the Friends



Bishop Robert with Interim Dean, Canon Andrew, after his licensing



Bishop Stephen with the Archbishop of Canterbury, other bishops and the Chapter of Salisbury Cathedral



Bishop Stephen following his consecration



Bishop Stephen with Interim Dean, Canon Andrew

IN REMEMBRANCE AND NEW MEMBERS

In Remembrance

We remember with gratitude the loyal membership and support of these Friends whose passing we record with great sadness. This list includes members who died in 2021 or those of whose death we were notified in 2021.

Mr Derek Catchpole

Miss Marjorie Davies

Mrs M. Dee

Miss Suzanne Eward

Mr Bill Foster

Mr Michael Girdler

Mr Peter Hagan

Mrs Muriel Harris

Mr Tony Higgs

Lt Col Robert Jarman

Mr J. Jenner

Mrs Nancy H. Lister

Mrs Lilla McGrory

Mr John V. Mayer

Mr W. Parker

Mrs P.G. Parker

The Venerable Hedley Ringrose

Major Roy Stewart

Revd. Brian Taylor

Mr K. Thomas

Mrs T. Thurlow

Sam, Lord Vestey

Mrs J.R.L. Watts

New Members

We have welcomed 142 new members in the year to 31 December 2021. We hope that their affiliation with the Friends will prove happy and fulfilling, and look forward to meeting them all in the course of the coming year.

Mr S Aylward

Mrs J Bailey

Mr and Mrs M Baker

Mr M Beresford-Cole

Miss A Bick and Mr S Nalepa

Miss S Bielaszewska

Mrs S Bridgen

Mr M Brunsdon

Miss P Buckland

Mr N Burra

Mr and Mrs G S Busbridge

Mrs H Castle

Mr J D Chilman

Mrs F S Chilman

Miss E G Chilman

Mr W D J Chilman

Miss L Christie

Mrs C Clark

Mrs R Clowes

Mr P Cole

Mr C Collier

Professor T Congdon (***Life Member***)

Mrs C N Cookson

Mr R Cotterill

Dr K Curtis

Mr P Davies

Mr E Dawson

Mr J Dawson

Ms J Dutton Early

Mr G E Dye

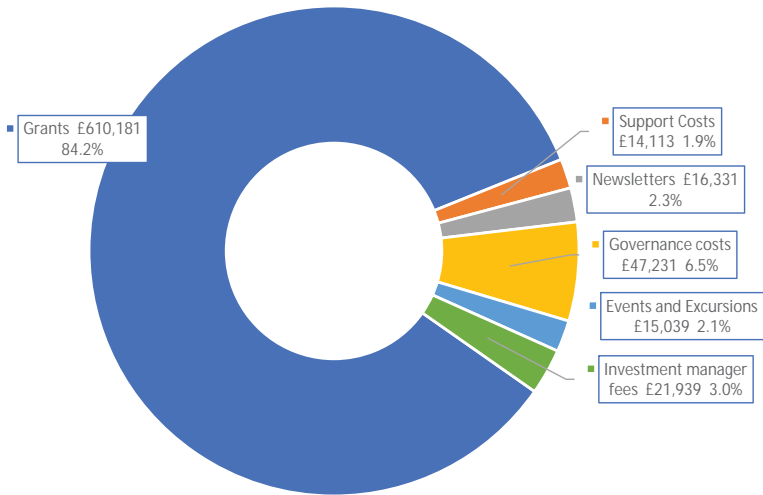
Ms R Edmunds

Mrs K M Evans

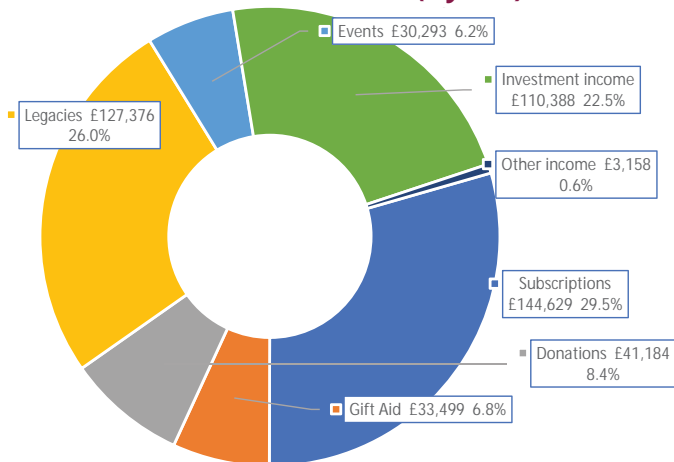
Miss E Fells and Mr C Donaldson
 Mrs S Fielding
 Mr and Mrs M Forster
 Ms J C H Foster
 Mrs J Foster
 Mr and Mrs R Fox
 Mr Franklin and Ms Roberts
 Mr M Galton
 The Rev. Canon M Garland
 Mrs A Gray
 Mrs S Green
 Mr and Mrs D Green
 Mr P D A Hankins
 Ms M D Hann *(Life Member)*
 Mr and Mrs J Harper
 Mrs C Harrison
 Miss D A Harrop *(Life Member)*
 Mr M Hawkins
 Mrs H Horsley
 Professor A Hunt and Mrs H Moore
 Dr E Hutton
 The Rev. C Jarman
 Dr B and Dr V Johannes *(Life Members)*
 Mrs J Johnson
 Mrs L Keeling
 Mr R P Keevil
 Mrs P Kiernan
 Mrs G Kilpatrick
 Mr and Mrs R Knibbs
 Ms P Lacy
 Mr R Lane
 Ms E Lane
 Mrs J Lawrence
 Mr P Llewellyn
 Dr B and Mr A Lomax *(Life Members)*
 Mrs D Long
 Mrs A Loodmer
 Dr S Maidlow
 Miss M Matthews
 Mr M Melbourne
 Mr S Milton
 Mrs P Mitchell
 The Rev. E Mitchell
 Mrs B Morgan

Mrs M Morley
 Ms S Mortimer and Mr D Scott
(Life Members)
 Miss H Murrell
 Miss J A Newcombe
 Mr B Page
 Miss P Parkinson
 Mrs C Partington
 Ms A Payne
 Mr J Pegler
 Mr D Pigott
 Mrs M E Popentiu and
 Mr K Mattingley
 Dr and Ms D S Preston
 The Rev. D Quin
 Miss A Ravey
 Ms S Reeves *(Life Member)*
 The Rev. and Mrs M Riley
 Air Marshal G Robertson
 Ms A Rosic
 Mr and Mrs R A Scott
 Mr I Shearman
 Mr and Mrs J Sparrey
 Mrs S Strawbridge
 Mrs A Sulston
 Lt Col A Tabor
 The Hon Hugh Tollemache
(Life Member)
 Mr and Mrs A Townsend
 Mr and Mrs G Tozer *(Life Members)*
 Mr R H G Turner
 Mr and The Rev. J Tyson
 Mr P Vaughan *(Life Member)*
 Mr S Wall
 Mrs C Walters
 Mrs S Watkins
 Mr G C White
 Mrs C Wilcock
 Mrs L Wiltshire
 Mr A Woods
 Mr G C Worth
 Mrs I Yates
 Mrs and Mr P Zadeh

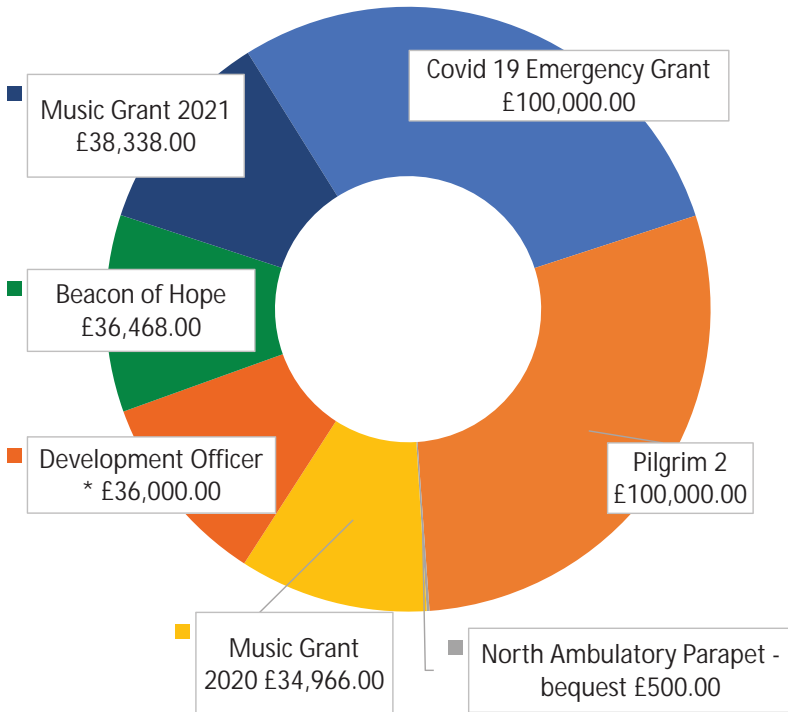
Friends of Gloucester Cathedral Expenditure: 2017-2021 (5 years)



Friends of Gloucester Cathedral Income: 2017-2021 (5 years)



***Friends of Gloucester Cathedral
Grants awarded in 2020 and 2021***



* The Development Officer grant is being paid in eight quarterly instalments over two years.

2009–2020 (based on Annual Accounts 2010–2019) – Grants awarded to the Cathedral total in excess of £1.28 million.

Thank you for making these grants possible!

REPORT OF COUNCIL

The Council presents its report with the Financial Statements of The Friends of Gloucester Cathedral for the year ended 31st December 2021

Reference and Administrative Information

Charity Name:	The Friends of Gloucester Cathedral ('the Friends')
Charity Number:	209246
Registered Office:	The Friends of Gloucester Cathedral 11a College Green, Gloucester GL1 2LX Telephone: 01452 522419 Email: office.administrator@fogc.co.uk
Patron:	His Royal Highness the Duke of Gloucester
President:	The Hon Hugh Tollemache
Chairlady:	Margaret Austen MA (Cantab), DL
Vice-Chair:	Antony Wilton-Steer
Honorary Secretary:	Robert Ingram MA (Oxon)
Honorary Treasurer:	Tim Watkins FCA
Office Administrator:	Claire Saunders BA
Cathedral Architect:	Antony Feltham-King RIBA, GradDiplConsAA, AABC
Independent Examiner:	Hazlewoods, Windsor House, Bayshill Road, Cheltenham, GL50 3AT
Bankers:	Lloyds Bank, 19 Eastgate Street, Gloucester GL1 1NU
Investment Managers:	JM Finn and Co, Stockbrokers, St Brandons House, 31 Great George St, Bristol BS1 5QD

STRUCTURE, GOVERNANCE AND MANAGEMENT

The management and operation of the Friends are governed by a Constitution. A copy of the Constitution and supporting policies is on the Friends' website or available from the Friends' Office. The governance of The Friends of Gloucester Cathedral is vested in the Council, which exercises general control and management of the administration of the Charity.

Trustees and Members of Council

At the AGM on 3 July 2021 Susan Faircloth retired as a member of Council and was not eligible for re-election. There were no other appointments and two vacancies were carried forward. Robert Ingram was re-appointed as Honorary Secretary and Tim Watkins was re-appointed as Honorary Treasurer.

The full list of Members of Council and Trustees of the Charity are:

Margaret Austen	Chairlady
Carolyn, Lady Elwes	
Felicity Read	
Marcus Green	
Sinclair Johnston	
Antony Wilton-Steer	Vice-Chair

Ex-officio members of Council and also Charity Trustees:

Robert Ingram	Honorary Secretary
The Very Reverend Stephen Lake	Dean of Gloucester (until 3 April 2022)
Timothy Watkins	Honorary Treasurer
Reverend Canon Richard Mitchell	Co-opted member of Chapter

The following may be invited to attend Council Meetings but are not Council Members/Trustees:

Antony Feltham-King	Cathedral Architect
Canon Emily MacKenzie	Chapter Steward & Chief Operating Officer
Claire Saunders	Office Administrator

Objects and Activities

The objects of the Charity are set out in the Constitution.

The Chapter of Gloucester Cathedral identifies particular financial needs and applies to the Friends for grants. The Council considers grant applications and makes grants which accord with the charitable objects.

Statement on Public Benefit

The Trustees are aware of the Public Benefit provisions of the Charities Act 2011 and of the relevant guidance provided by the Charity Commission from time to time. The Trustees are not aware of any Trustee receiving private benefit from the Charity's activities. The provision of public benefit is achieved by providing financial and other support and assistance for the maintenance of the building and the music of Gloucester Cathedral. The building and the music are accessible to all members of the public. Admission to the Cathedral is free.

Gift Aid

We are grateful to all Friends who have signed Gift Aid declarations. We have been able to reclaim £6,496 from HMRC in 2021 (£6,315 in 2020).

Once a gift aid declaration has been signed, there is no need to prepare a fresh one, unless there is a change of address. This is an important source of income for the Friends, and we would encourage all

tax-paying members to participate. It would be a considerable loss if the Friends were denied gift aid reclaims. If you cease to be eligible for gift aid, please let us know.

Further information and advice can be obtained from the office (01452 522419) or office.administrator@fogc.co.uk.

Legacies

Over the years legacies have enabled the Friends to build fairly substantial funds, but we have also made considerable grants to the Cathedral in recent years, particularly in 2020 with the need to provide urgent support to the Cathedral during the pandemic crisis, which have considerably reduced our resources.

Legacy income is very important to the Friends and we would be very grateful if you could consider leaving a legacy to the Friends in your Will. You will wish to consult your solicitor about your will, but further information can be obtained from the Friends' office.

We are extremely grateful to members who have remembered the Friends in their wills. In 2021 we received legacies from:

- Mr John Syrad
- Mr John Barnicoat
- Miss Doris Hanks
- Mrs Jean Hollingworth

Legacies make a tremendous difference to the work the Friends can do and we very much appreciate all these gifts, which we will put to very good effect.

FINANCIAL REVIEW, ACHIEVEMENTS AND PERFORMANCE

Results for the Year

2021 was another difficult year with further lockdowns and many events having to be cancelled or postponed. However things have gradually progressed towards greater normality and we have started to look forward with our Cathedral colleagues, and planning has started for Pilgrim 2 – Beacon of Hope. The Friends have made the first grant of £100,000 towards Pilgrim 2 and have set aside a further £300,000 towards this project, which it is anticipated will be drawn down in tranches in 2024–2025.

The stock market has held up reasonably well in 2021 and our investments were just under £700k at 31 December 2021.

Donations of £4,338 in 2021 were somewhat down from £5,625 in 2020. Legacy income in 2021 totalled £31,485 compared with £13,000 in 2020, for which we are very grateful. These figures can fluctuate significantly from year to year. Subscriptions (excluding gift aid) increased from £26,914 in 2020 to £29,527 in 2021. Some life memberships can make a big difference to these figures. Member numbers also increased considerably with the offer of one year free membership to Cathedral volunteers. We have been delighted that a number of volunteers have chosen to renew their membership at the end of the free year. Events and Excursions generated a surplus of £3,144 in 2020 compared with £4,235 in 2021, which is an amazing result considering some events had to be cancelled or postponed. We are especially grateful to the Cathedral Guides who have worked with us on events. Our general expenditure on office support and governance was £13,379 in 2020 compared with £15,195 in 2021.

Grants have been made to the Cathedral as follows, totalling £307,934 in 2020, and £38,388 in 2021:

	2021	2020
Music grant	38,388	34,966
Pilgrim 2		100,000
Emergency grant		100,000
Development Officer		36,000
Beacon of Hope		36,468
North Ambulatory		500

By agreement with the Cathedral team the level of grant was modest in 2021 to enable the Friends to rebuild its balance sheet somewhat after the substantial grants in 2020, and to start to provide for the substantial grants which will be needed for Pilgrim 2.

Reserves Policy

The Trustees have set a Reserves Policy which requires that reserves be maintained at a level which ensures that the Friends' core activity could continue during a period of unforeseen difficulty for the Cathedral, and that a proportion of reserves be maintained in readily realisable form. The Trustees have adopted the following policy (which was last reviewed on 23 November 2020):

“ To distribute all amounts received as general grants and donations to the Cathedral. The Charity relies and depends on the Chapter to advise on projects and specific needs that meet the objects of the Charity and that require funding. In the event of there being no projects to support then surplus funds will be carried forward to be used for future grants. As the Charity selects the projects it wishes to support there may be occasions where levels of reserves are held with a view to supporting a future need and these will be noted at the time. A sum of £350,000 should be established as a strategic reserve and £25,000 should be considered as an operating reserve. These amounts shall be reviewed annually. ”

In addition, Council has reviewed the Friends' cash position in view of the global situation and potential stock market volatility. At the meeting on 31 January 2022 Council resolved to hold a cash contingency fund of £50,000 over and above the amount needed to meet known liabilities, to enable the Friends to assist with future Cathedral emergencies.

Investment Policy

The Trustees have adopted the following policy which was last reviewed on 23 November 2020:

“ To invest in the stock market funds which are not likely to be required in the near future for grant purposes, bearing in mind that equities are less liquid than cash and there is a cost involved in buying and selling equities. The investment of any sum in excess of £25,000 shall be referred to Council, except placing monies in the Friends' deposit account. ”

The Friends follows ethical investment policies promulgated by the Church of England and engages J. M. Finn & Co. as stockbrokers.

Statement of Trustees' Responsibilities

The Honorary Treasurer maintains an overview of the financial affairs of the Charity, ensuring its financial viability and is responsible for maintaining proper books and procedures, with the assistance of the office administrator, for the preparation of income and expenditure accounts and a balance sheet. Proper books are such records as are necessary to give a true and fair view of the state of the Friends' financial affairs and to explain transactions.

The Trustees are responsible for safeguarding the assets of the Friends and for taking reasonable steps for the prevention and detection of fraud and other irregularities. The Trustees are responsible for preparing the Trustees' Report and the financial statements in accordance with applicable law, United Kingdom Accounting Standards, and United Kingdom Generally Accepted Accounting Practice.

The Trustees have considered the major risks to which the Charity is exposed. In their opinion the existing systems are sufficient to mitigate those risks.

Independent Examiner

Hazlewoods of Windsor House, Bayshill Road, Cheltenham, GL50 3AT were appointed at the AGM on 9 December 2020. We are very grateful to them for undertaking this work at a substantially discounted fee.

On behalf of the council:

Margaret Austen

Chair lady, 29 April 2022

STATEMENT OF FINANCIAL ACTIVITIES

FOR THE YEAR ENDED 31 DECEMBER 2021

	Notes	Unrestricted Funds £	Permanent Endowment Fund £	TOTAL £	2020 £
INCOME FROM					
Donations and legacies	3	71846	-	71846	51854
Other trading activities		6392	-	6392	3612
Investment income	4	16944	-	16944	19262
Other		<u>1498</u>	<u>-</u>	<u>1498</u>	<u>225</u>
TOTAL		<u>96680</u>	<u>-</u>	<u>96680</u>	<u>74953</u>
EXPENDITURE ON					
Raising funds	5	5254	-	5254	4407
Charitable activities					
Grants payable	6	38338	-	38338	307934
Other costs of charitable activities	7	<u>15194</u>	<u>-</u>	<u>15194</u>	<u>13379</u>
TOTAL		<u>58786</u>	<u>-</u>	<u>58786</u>	<u>325720</u>
Net gains/(loss) on Investments	8	<u>90220</u>	<u>-</u>	<u>90220</u>	<u>(46659)</u>
NET INCOME/ (NET EXPENDITURE)		128114	-	128114	(297426)
RECONCILIATION OF FUNDS:					
Funds brought forward		<u>622162</u>	<u>5000</u>	<u>627162</u>	<u>924588</u>
FUNDS CARRIED FORWARD		<u>750276</u>	<u>5000</u>	<u>755276</u>	<u>627162</u>

BALANCE SHEET

AS AT 31 DECEMBER 2021

	Notes	£	2021 £	2020 £
FIXED ASSETS	10		-	-
INVESTMENTS	11		699430	<u>613135</u>
CURRENT ASSETS				
Debtors and prepayments	12	3863		10853
Cash at bank and in hand				
Deposit accounts		94111		105061
Current accounts		<u>12235</u>		<u>7022</u>
		110209		122936
CURRENT LIABILITIES				
Creditors and accruals	13	<u>54363</u>		<u>108909</u>
NET CURRENT ASSETS			<u>55846</u>	<u>14027</u>
TOTAL ASSETS LESS CURRENT LIABILITIES			<u>755276</u>	<u>627162</u>
FUNDS				
Unrestricted income fund			750276	622162
Permanent Endowment Fund			<u>5000</u>	<u>5000</u>
			<u>755276</u>	<u>627162</u>

Approved by the Council on: 29 April 2022

and signed on its behalf by;

MARGARET AUSTEN

TIM WATKINS



L&S Lifestyle

Lighting & Homewares



Independent lighting and homewares shop situated next to Gloucester's historic cathedral. Call in and discover an eclectic range of goods.



6 College Street, Gloucester
GL1 2NE
01452 901994
info@landslifestyle.uk

Visit us in
store and on
social media

 @L&SLifestyleuk
 @L&SLifestyleuk
 @L&SLifestyle



THE CANDLE TREE

Situated on the historic College Street at the entrance to Gloucester Cathedral, The Candle Tree is an eclectic gift shop emporium.

Browse our beautiful range of candles, handcrafted soaps, home fragrances, luxury bath & body treats, stunning artwork, greeting cards and much more.

Follow us:  @thecandletree

 @thecandletree

 @thecandletree

www.thecandletree.uk

Contact: info@thecandletree.uk



**FRIENDS OF
GLOUCESTER
CATHEDRAL**

11a College Green, Gloucester. GL1 2LX

Telephone: 01452 522419

Email: office.administrator@fogc.co.uk

Website: www.fogc.co.uk

Registered Charity: 209246

THE FRIENDS' PRAYER

Eternal God
creator of all things
and source of life and inspiration,
we thank you for this Cathedral Church of Gloucester
its prayer, hospitality and witness.

We ask you to bless the Friends of this Cathedral
in their work of supporting
the maintenance and conservation of the fabric,
and the worship and music of this place.

We pray that by extending the hand of friendship,
we may participate fully in the ministry and mission
of this great Cathedral,
through Jesus Christ our Lord.

Amen

INDEPENDENT EXAMINER'S REPORT TO THE TRUSTEES OF THE FRIENDS OF GLOUCESTER CATHEDRAL

I report to the charity trustees on my examination of the accounts of the charity for the year ended 31 December 2021 which are set out on pages 8 to 14.

Responsibilities and basis of report

As the charity's trustees you are responsible for the preparation of the accounts in accordance with the requirements of the Charities Act 2011 (the Act).

I report in respect of my examination of the charity's accounts carried out under section 145 of the Act and in carrying out my examination I have followed all the applicable Directions given by the Charity Commission under section 145(5)(b) of the Act.

Independent examiner's statement

I have completed my examination. I confirm that no material matters have come to my attention in connection with the examination giving me cause to believe that in any material respect:

1. Accounting records were not kept in respect of the charity as required by section 130 of the Act;
or
2. The accounts do not accord with those records; or
3. The accounts do not comply with the applicable requirements concerning the form and content of accounts set out in the Charities (Accounts and Reports) Regulations 2008 other than any requirement that the accounts give a 'true and fair view' which is not a matter considered as part of an independent examination.

I have no concerns and have come across no other matters in connection with the examination to which attention should be drawn in this report in order to enable a proper understanding of the accounts to be reached.

Date:

FRIENDS OF GLOUCESTER CATHEDRAL

STATEMENT OF FINANCIAL ACTIVITIES FOR THE YEAR ENDED 31 DECEMBER 2021

	Notes	Unrestricted Funds £	Permanent Endowment Fund £	TOTAL £	2020 £
INCOME FROM					
Donations and legacies	3	71846	-	71846	51854
Other trading activities		6392	-	6392	3612
Investment income	4	16944	-	16944	19262
Other		<u>1498</u>	<u>-</u>	<u>1498</u>	<u>225</u>
TOTAL		<u>96680</u>	<u>-</u>	<u>96680</u>	<u>74953</u>
EXPENDITURE ON					
Raising funds	5	5254	-	5254	4407
Charitable activities					
Grants payable	6	38338	-	38338	307934
Other costs of charitable activities	7	<u>15194</u>	<u>-</u>	<u>15194</u>	<u>13379</u>
TOTAL		<u>58786</u>	<u>-</u>	<u>58786</u>	<u>325720</u>
Net gains/(loss) on Investments	8	<u>90220</u>	<u>-</u>	<u>90220</u>	<u>(46659)</u>
NET INCOME/ (NET EXPENDITURE)		128114	-	128114	(297426)
RECONCILIATION OF FUNDS:					
Funds brought forward		<u>622162</u>	<u>5000</u>	<u>627162</u>	<u>924588</u>
FUNDS CARRIED FORWARD		<u>750276</u>	<u>5000</u>	<u>755276</u>	<u>627162</u>

The notes set out on pages 10 to 14 form part of these accounts

FRIENDS OF GLOUCESTER CATHEDRAL

BALANCE SHEET AS AT 31 DECEMBER 2021

	Notes	£	2021 £	2020 £
FIXED ASSETS	10		-	-
INVESTMENTS	11		699430	<u>613135</u>
CURRENT ASSETS				
Debtors and prepayments	12	3863		10853
Cash at bank and in hand				
Deposit accounts		94111		105061
Current accounts		<u>12235</u>		<u>7022</u>
		110209		122936
CURRENT LIABILITIES				
Creditors and accruals	13	<u>54363</u>		<u>108909</u>
NET CURRENT ASSETS			<u>55846</u>	<u>14027</u>
TOTAL ASSETS LESS CURRENT LIABILITIES			<u>755276</u>	<u>627162</u>
FUNDS				
Unrestricted income fund			750276	622162
Permanent Endowment Fund			<u>5000</u>	<u>5000</u>
			<u>755276</u>	<u>627162</u>

Approved by the Council on: 29 April 2022

and signed on its behalf by;

MARGARET AUSTEN

TIM WATKINS

The notes set out on pages 10 to 14 form part of these accounts

FRIENDS OF GLOUCESTER CATHEDRAL

NOTES TO THE ACCOUNTS FOR THE YEAR ENDED 31 DECEMBER 2021

1. Status

The Friends of Gloucester Cathedral is an unincorporated association; it is also a registered charity whose activities are intended to be for the public benefit.

2. Accounting policies

a) Basis of preparation

The accounts (financial statements) have been prepared in accordance with the Statement of Recommended Practice: Accounting and Reporting by Charities preparing their accounts in accordance with the Financial Reporting Standard applicable in the UK and Republic of Ireland (FRS 102) issued on 16 July 2014 and the Financial Reporting Standard applicable in the United Kingdom and Republic of Ireland (FRS 102) and the Charities Act 2011 and UK Generally Accepted Practice as it applies from 1 January 2015.

The accounts (financial statements) have been prepared to give a 'true and fair' view and have departed from the Charities (Accounts and Reports) Regulations 2008 only to the extent required to provide a 'true and fair view'. This departure has involved following Accounting and Reporting by Charities preparing their accounts in accordance with the Financial Reporting Standard applicable in the UK and Republic of Ireland (FRS 102) issued on 16 July 2014 rather than the Accounting and Reporting by Charities: Statement of Recommended Practice effective from 1 April 2005 which has since been withdrawn.

b) Going concern

After making enquiries, the trustees are not aware of any material uncertainties that cast doubt on going concern and have a reasonable expectation that the Charity will be able to continue its activities for the foreseeable future, and at least twelve months from the date of approval of these accounts. Accordingly, they have continued to adopt the going concern basis in the financial statements.

c) Income

Income is recognised when the charity has entitlement to the funds.

Monetary donations and gifts are included in the period in which the Charity is entitled to receipt and the amount can be measured with reasonable certainty. Income is deferred only when the Charity has to fulfil conditions before becoming entitled to it or where the donor has specified that the income is to be expended in a future period.

For legacies, entitlement is taken as the earlier of the date on which either: the Charity is aware that probate has been granted, the estate has been finalised and notification has been made by the executor(s) to the Trust that a distribution will be made, or when a distribution is received from the estate. Receipt of a legacy, in whole or in part, is only considered probable when the amount can be measured reliably and the charity has been notified of the executor's intention to make a distribution.

d) Expenditure

Liabilities are recognised as resources expended as soon as there is a legal or constructive obligation committing the Charity to the expenditure. All expenditure is accounted for on an accruals basis and has been classified under headings that aggregate all costs (including irrecoverable VAT) related to the category.

FRIENDS OF GLOUCESTER CATHEDRAL

NOTES TO THE ACCOUNTS FOR THE YEAR ENDED 31 DECEMBER 2021

Costs of generating funds include all costs associated with generating voluntary income including investment manager's fees.

Charitable activities include all grants made, support costs and governance costs, being costs incurred in fulfilling the Friends' objectives.

e) Funds structure

Unrestricted funds are funds which are available for use at the discretion of the trustees in furtherance of the general objectives of the Charity. Within this fund the Charity has designated an Events and Excursions Fund.

f) Fixed assets

Depreciation is provided at a rate of 50% in order to write off computer equipment over its useful life using the straight line method.

g) Investments

Investments are shown at market value at the year end.

h) Grants payable

Grants payable are payments made to the Cathedral in the furtherance of the charitable objectives of the Charity. The grants are accounted for when approved by the Council. Any grants unpaid at the year end have been included as liabilities.

3.	<u>Donations and legacies</u>	2021 £	2020 £
	Subscriptions	29527	26914
	Gift Aid tax refund	6496	6315
	Donations	4338	5625
	Legacies	<u>31485</u>	<u>13000</u>
		<u>71846</u>	<u>51854</u>
4.	<u>Investment income</u>	2021 £	2020 £
	Quoted investments	16898	18658
	Interest receivable	<u>46</u>	<u>604</u>
		<u>16944</u>	<u>19262</u>
5.	<u>Raising funds</u>	2021 £	2020 £
	Event and excursions	1262	468
	Investment manager's fees	<u>3992</u>	<u>3939</u>
		<u>5254</u>	<u>4407</u>

FRIENDS OF GLOUCESTER CATHEDRAL

NOTES TO THE ACCOUNTS FOR THE YEAR ENDED 31 DECEMBER 2021

6. <u>Grants payable</u>	2021	2020
	£	£
Beacon of Hope	-	36468
Choral Scholarships	38338	34966
Emergency Grant (Covid)	-	100000
Membership Development Grant	-	36000
North Ambulatory Parapet	-	500
Project Pilgrim 2	-	<u>100000</u>
	<u>38338</u>	<u>307934</u>
7. <u>Other costs of charitable activities</u>		
	2021	2020
	£	£
<u>Support costs</u>		
Bank charges	185	168
Insurance	587	614
Newsletters	2954	3211
Office expenses	1595	1554
Rates	120	120
Sundries	<u>-</u>	<u>50</u>
	<u>5441</u>	<u>5717</u>
<u>Governance costs</u>		
Administrative assistance	8095	6680
Annual report and meeting	1178	422
Independent Examination fee	<u>480</u>	<u>560</u>
	<u>9753</u>	<u>7662</u>
Total	<u>15194</u>	<u>13379</u>

No members of the Council or Executive Committee or any person connected with them has received or is due to receive any remuneration for the year directly or indirectly from the Charity's funds.

8. <u>Net gains on investments</u>	2021	2020
	£	£
Profit/(loss) on disposal of investment assets	980	(30645)
Unrealised profit/(loss) on revaluation of investment assets	<u>89240</u>	<u>(16014)</u>
	<u>90220</u>	<u>(46659)</u>

FRIENDS OF GLOUCESTER CATHEDRAL

NOTES TO THE ACCOUNTS FOR THE YEAR ENDED 31 DECEMBER 2021

9. Comparatives for the statement of financial activities

All of the comparative figures on the statement of financial activities relate exclusively to unrestricted funds other than:

1. Funds brought forward and carried forward of which £5000 is related to endowment funds.

10. Fixed Assets

	<u>Computer</u> £
Cost	
As at 31 December 2020	<u>3565</u>
As at 31 December 2021	<u>3565</u>
Depreciation	
As at 31 December 2020	<u>3565</u>
As at 31 December 2021	<u>3565</u>
Net Book Value as at 31 December 2020	<u>NIL</u>
Net Book Value as at 31 December 2021	<u>NIL</u>

11. Investments

	2021 £	2020 £
Market value at start of year	613135	781807
Additions	45384	65752
Disposals	(48329)	(218410)
Net unrealised investment gain (loss)	<u>89240</u>	<u>(16014)</u>
Market value at end of year	<u>699430</u>	<u>613135</u>

Investments listed on UK Stock Exchange

	2021	%	2020	%
Fixed interest and Bonds	175644	25	167297	27
Equities and Funds	<u>523786</u>	<u>75</u>	<u>445838</u>	<u>73</u>
	<u>699430</u>	<u>100</u>	<u>613135</u>	<u>100</u>

FRIENDS OF GLOUCESTER CATHEDRAL

NOTES TO THE ACCOUNTS FOR THE YEAR ENDED 31 DECEMBER 2021

	2021	2020
12. <u>Debtors</u>	£	£
Taxation	2037	2135
Legacies due	168	7500
Other debtors	<u>1658</u>	<u>1218</u>
	<u>3863</u>	<u>10853</u>
	2021	2020
13. <u>Creditors and accruals</u>	£	£
Grants payable	53500	107968
Accruals	<u>863</u>	<u>941</u>
	<u>54363</u>	<u>108909</u>

14. Summary of net assets by funds

A balance of £5000 is retained as part of the Bank Deposit account to represent the Permanent Endowment Fund. All other assets and liabilities represent the Unrestricted Income Fund.

INDEPENDENT EXAMINER'S REPORT TO THE TRUSTEES OF THE FRIENDS OF GLOUCESTER CATHEDRAL

I report to the charity trustees on my examination of the accounts of the charity for the year ended 31 December 2021 which are set out on pages 8 to 14.

Responsibilities and basis of report

As the charity's trustees you are responsible for the preparation of the accounts in accordance with the requirements of the Charities Act 2011 (the Act).

I report in respect of my examination of the charity's accounts carried out under section 145 of the Act and in carrying out my examination I have followed all the applicable Directions given by the Charity Commission under section 145(5)(b) of the Act.

Independent examiner's statement

I have completed my examination. I confirm that no material matters have come to my attention in connection with the examination giving me cause to believe that in any material respect:

1. Accounting records were not kept in respect of the charity as required by section 130 of the Act; or
2. The accounts do not accord with those records; or
3. The accounts do not comply with the applicable requirements concerning the form and content of accounts set out in the Charities (Accounts and Reports) Regulations 2008 other than any requirement that the accounts give a 'true and fair view' which is not a matter considered as part of an independent examination.

I have no concerns and have come across no other matters in connection with the examination to which attention should be drawn in this report in order to enable a proper understanding of the accounts to be reached.



Jon Cartwright
Partner

Hazlewoods LLP, Windsor House, Bayshill Road, Cheltenham, GL50 3AT

Date: 19 May 2022

FRIENDS OF GLOUCESTER CATHEDRAL

STATEMENT OF FINANCIAL ACTIVITIES FOR THE YEAR ENDED 31 DECEMBER 2021

	Notes	Unrestricted Funds £	Permanent Endowment Fund £	TOTAL £	2020 £
INCOME FROM					
Donations and legacies	3	71846	-	71846	51854
Other trading activities		6392	-	6392	3612
Investment income	4	16944	-	16944	19262
Other		<u>1498</u>	<u>-</u>	<u>1498</u>	<u>225</u>
TOTAL		<u>96680</u>	<u>-</u>	<u>96680</u>	<u>74953</u>
EXPENDITURE ON					
Raising funds	5	5254	-	5254	4407
Charitable activities					
Grants payable	6	38338	-	38338	307934
Other costs of charitable activities	7	<u>15194</u>	<u>-</u>	<u>15194</u>	<u>13379</u>
TOTAL		<u>58786</u>	<u>-</u>	<u>58786</u>	<u>325720</u>
Net gains/(loss) on Investments	8	<u>90220</u>	<u>-</u>	<u>90220</u>	<u>(46659)</u>
NET INCOME/ (NET EXPENDITURE)		128114	-	128114	(297426)
RECONCILIATION OF FUNDS:					
Funds brought forward		<u>622162</u>	<u>5000</u>	<u>627162</u>	<u>924588</u>
FUNDS CARRIED FORWARD		<u>627162</u>	<u>750276</u>	<u>5000</u>	<u>755276</u>

The notes set out on pages 10 to 14 form part of these accounts

FRIENDS OF GLOUCESTER CATHEDRAL

BALANCE SHEET AS AT 31 DECEMBER 2021

	Notes	£	2021 £	2020 £
FIXED ASSETS	10		-	-
INVESTMENTS	11		699430	<u>613135</u>
CURRENT ASSETS				
Debtors and prepayments	12	3863		10853
Cash at bank and in hand				
Deposit accounts		94111		105061
Current accounts		<u>12235</u>		<u>7022</u>
		110209		122936
CURRENT LIABILITIES				
Creditors and accruals	13	<u>54363</u>		<u>108909</u>
NET CURRENT ASSETS			<u>55846</u>	<u>14027</u>
TOTAL ASSETS LESS CURRENT LIABILITIES			<u>755276</u>	<u>627162</u>
FUNDS				
Unrestricted income fund			750276	622162
Permanent Endowment Fund				<u>5000</u>
<u>5000</u>				
			<u>755276</u>	<u>627162</u>

Approved by the Council on: 29 April 2022

and signed on its behalf by;

MARGARET AUSTEN

TIM WATKINS

The notes set out on pages 10 to 14 form part of these accounts

FRIENDS OF GLOUCESTER CATHEDRAL

NOTES TO THE ACCOUNTS FOR THE YEAR ENDED 31 DECEMBER 2021

1. Status

The Friends of Gloucester Cathedral is an unincorporated association; it is also a registered charity whose activities are intended to be for the public benefit.

2. Accounting policies

a) Basis of preparation

The accounts (financial statements) have been prepared in accordance with the Statement of Recommended Practice: Accounting and Reporting by Charities preparing their accounts in accordance with the Financial Reporting Standard applicable in the UK and Republic of Ireland (FRS 102) issued on 16 July 2014 and the Financial Reporting Standard applicable in the United Kingdom and Republic of Ireland (FRS 102) and the Charities Act 2011 and UK Generally Accepted Practice as it applies from 1 January 2015.

The accounts (financial statements) have been prepared to give a 'true and fair' view and have departed from the Charities (Accounts and Reports) Regulations 2008 only to the extent required to provide a 'true and fair view'. This departure has involved following Accounting and Reporting by Charities preparing their accounts in accordance with the Financial Reporting Standard applicable in the UK and Republic of Ireland (FRS 102) issued on 16 July 2014 rather than the Accounting and Reporting by Charities: Statement of Recommended Practice effective from 1 April 2005 which has since been withdrawn.

b) Going concern

After making enquiries, the trustees are not aware of any material uncertainties that cast doubt on going concern and have a reasonable expectation that the Charity will be able to continue its activities for the foreseeable future, and at least twelve months from the date of approval of these accounts. Accordingly, they have continued to adopt the going concern basis in the financial statements.

c) Income

Income is recognised when the charity has entitlement to the funds.

Monetary donations and gifts are included in the period in which the Charity is entitled to receipt and the amount can be measured with reasonable certainty. Income is deferred only when the Charity has to fulfil conditions before becoming entitled to it or where the donor has specified that the income is to be expended in a future period.

For legacies, entitlement is taken as the earlier of the date on which either: the Charity is aware that probate has been granted, the estate has been finalised and notification has been made by the executor(s) to the Trust that a distribution will be made, or when a distribution is received

from the estate. Receipt of a legacy, in whole or in part, is only considered probable when the amount can be measured reliably and the charity has been notified of the executor's intention to make a distribution.

d) Expenditure

Liabilities are recognised as resources expended as soon as there is a legal or constructive obligation committing the Charity to the expenditure. All expenditure is accounted for on an accruals basis and has been classified under headings that aggregate all costs (including irrecoverable VAT) related to the category.

FRIENDS OF GLOUCESTER CATHEDRAL

**NOTES TO THE ACCOUNTS
FOR THE YEAR ENDED 31 DECEMBER 2021**

Costs of generating funds include all costs associated with generating voluntary income including investment manager's fees.

Charitable activities include all grants made, support costs and governance costs, being costs incurred in fulfilling the Friends' objectives.

e) Funds structure

Unrestricted funds are funds which are available for use at the discretion of the trustees in furtherance of the general objectives of the Charity. Within this fund the Charity has designated an Events and Excursions Fund.

f) Fixed assets

Depreciation is provided at a rate of 50% in order to write off computer equipment over its useful life using the straight line method.

g) Investments

Investments are shown at market value at the year end.

h) Grants payable

Grants payable are payments made to the Cathedral in the furtherance of the charitable objectives of the Charity. The grants are accounted for when approved by the Council. Any grants unpaid at the year end have been included as liabilities.

3. <u>Donations and legacies</u>	2021 £	2020 £
Subscriptions	29527	26914
Gift Aid tax refund	6496	6315
Donations	4338	5625
Legacies	<u>31485</u>	<u>13000</u>
	<u>71846</u>	<u>51854</u>
4. <u>Investment income</u>	2021 £	2020 £
Quoted investments	16898	18658

Interest receivable	<u>46</u>	<u>604</u>
	<u>16944</u>	<u>19262</u>
5. <u>Raising funds</u>	2021	2020
	£	£
Event and excursions	1262	468
Investment manager's fees	<u>3992</u>	<u>3939</u>
	<u>5254</u>	<u>4407</u>

FRIENDS OF GLOUCESTER CATHEDRAL

NOTES TO THE ACCOUNTS FOR THE YEAR ENDED 31 DECEMBER 2021

6. <u>Grants payable</u>	2021	2020
	£	£
Beacon of Hope	-	36468
Choral Scholarships	38338	34966
Emergency Grant (Covid)	-	100000
Membership Development Grant	-	36000
North Ambulatory Parapet	-	500
Project Pilgrim 2	-	<u>100000</u>
	<u>38338</u>	<u>307934</u>
7. <u>Other costs of charitable activities</u>		
	2021	2020
	£	£
<u>Support costs</u>		
Bank charges	185	168
Insurance	587	614
Newsletters	2954	3211
Office expenses	1595	1554
Rates	120	120
Sundries	<u>-</u>	<u>50</u>
	<u>5441</u>	<u>5717</u>
<u>Governance costs</u>		
Administrative assistance	8095	6680
Annual report and meeting	1178	422
Independent Examination fee	<u>480</u>	<u>560</u>
	<u>9753</u>	<u>7662</u>
Total	<u>15194</u>	<u>13379</u>

No members of the Council or Executive Committee or any person connected with them has received or is due to receive any remuneration for the year directly or indirectly from the Charity's funds.

8. Net gains on investments

	2021 £	2020 £
Profit/(loss) on disposal of investment assets	980	(30645)
Unrealised profit/(loss) on revaluation of investment assets		<u>89240</u> (<u>16014</u>)
	<u>90220</u>	<u>(46659)</u>

FRIENDS OF GLOUCESTER CATHEDRAL

**NOTES TO THE ACCOUNTS
FOR THE YEAR ENDED 31 DECEMBER 2021**

9. Comparatives for the statement of financial activities

All of the comparative figures on the statement of financial activities relate exclusively to unrestricted funds other than:

1. Funds brought forward and carried forward of which £5000 is related to endowment funds.

10. Fixed Assets

	<u>Computer</u> £	
Cost		
As at 31 December 2020	<u>3565</u>	
As at 31 December 2021	<u>3565</u>	
Depreciation		
As at 31 December 2020	<u>3565</u>	
As at 31 December 2021	<u>3565</u>	
Net Book Value as at 31 December 2020		<u>NIL</u>
Net Book Value as at 31 December 2021		<u>NIL</u>

11. Investments

	2021 £	2020 £
Market value at start of year	613135	781807

Additions	45384	65752
Disposals	(48329)	(218410)
Net unrealised investment gain (loss)		<u>89240</u> (<u>16014</u>)
Market value at end of year	<u>699430</u>	<u>613135</u>

Investments listed on UK Stock Exchange

	2021	%	2020	%
Fixed interest and Bonds	175644	25	167297	27
Equities and Funds	<u>523786</u>	<u>75</u>	<u>445838</u>	<u>73</u>
	<u>699430</u>	<u>100</u>	<u>613135</u>	<u>100</u>

FRIENDS OF GLOUCESTER CATHEDRAL

**NOTES TO THE ACCOUNTS
FOR THE YEAR ENDED 31 DECEMBER 2021**

	2021	2020
12. <u>Debtors</u>	£	£
Taxation	2037	2135
Legacies due	168	7500
Other debtors	<u>1658</u>	<u>1218</u>
	<u>3863</u>	<u>10853</u>
	2021	2020
13. <u>Creditors and accruals</u>	£	£
Grants payable	53500	107968
Accruals	<u>863</u>	<u>941</u>
	<u>54363</u>	<u>108909</u>

14. Summary of net assets by funds

A balance of £5000 is retained as part of the Bank Deposit account to represent the Permanent

Endowment Fund. All other assets and liabilities represent the Unrestricted Income Fund.

