

SAL'S NEWS

ISSUE 8 2021-2022



Shoes are relatively difficult to recycle because of all the different components they're made up of. As children tend to outgrow their shoes before they outwear them, we find their preloved shoes new feet.

IN 9 YEARS WE HAVE DISTRIBUTED:

3,882,646 pairs of shoes in **57** countries
(including the U.K.)

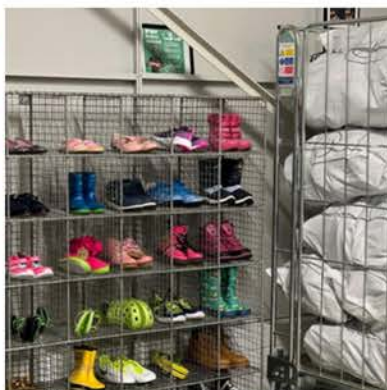
THIS YEAR:

1,045,168 pairs were distributed overseas

73,224 pairs were distributed within the U.K.
(not including new school shoes, PE trainers and wellies)

14,208 pairs of new school shoes, PE trainers and wellies were distributed within the U.K. from our **SCHOOL SHOES FUND**

TOTAL: 1,132,600 pairs this year



HACKNEY FAMILY CENTRE

A project from



In June we were delighted to open the Hackney Family Centre in partnership with Little Village, The Boiler House and The Guinness Partnership.

About 48% of children in Hackney live in poverty, according to figures compiled by Trust for London. This is significantly higher than the London average. Hackney also has one of the highest rates of households that live in temporary accommodation with 28

households per 1,000. The new Family Centre will not only provide access to a wide range of essential childcare items, including items like clothes, cots, nappies, toiletries, buggies, and toys, courtesy of Little Village; it will also offer a nurturing space for families to gain further support, build relationships, and feel more able to move through current challenges under the management of The Boiler House.

In the current cost of living crisis, too many families can barely afford to feed their families and heat their homes let alone afford to clothe their ever growing young. With the opening of our most recent Sal's Shoes 'shop' we're hoping to help ease that burden and give families in need the experience and enjoyment of a shopping trip without having to pay for their 'purchases.'



SAL'S SHOES SHOPS



In a continued collaboration with The Guinness Partnership we were delighted to open 2 further Sal's Shoes 'Shops' at the Northwold Youth & Community Centre on the Northwold Estate in London and at the Hackney Family Centre, both under the management of The Boiler House Community Space Charity. Our shops in Crewe and Salford continue to serve local communities.



working in partnership with



We also independently opened a 5th shoe shop in Hertfordshire at the Ukraine Support Hub run by Borehamwood charity Sebby's Corner.

UKRAINE



In the first 4 months after the war in Ukraine began, your support meant that we were able to send 10 consignments of shoes into Ukraine.

Initially we were sending winter footwear to families displaced from their homes with few personal possessions and then, as the weather warmed, we turned to replacing winter footwear with spring and summer footwear at locations including children's hospitals, monasteries harbouring displaced children and communities sheltering in safe zones.

Consignments went out in the U.K. to families, predominantly women and children arriving from Ukraine as part of the Ukraine Family Scheme and Sponsorship Scheme. Thanks to Stefan, there was also an in-country Sal's Shoes collection and distribution in Poland and shoes donated were distributed from a centre in Lublin where refugees from Ukraine could peruse and choose the essential items they were in need of.



A special thank you to Wolverine Worldwide, Saucony, Merrell, Bates Footwear, Caterpillar and Sperry for the hundreds and hundreds of new pairs of Sal's Shoes they donated as part of our consignments and to Country Kids for the boxes and boxes of new tights and socks that accompanied them.



Clemie's Clothes

Clemie's Clothes started as an opportunity to find new homes for pre-loved dressing up outfits, and to spread sparkle to the new owners of our Sal's Shoes.



Since then, when we have the space and time, we've been able to occasionally accommodate different donations of Clemie's Clothes in the form of large donations of new children's clothes. Our volunteers put their sorting skills to use categorising all the clothing before we're able to invite some of the baby banks we help support with Sal's Shoes, to come in and replenish their clothing stock.



SCHOOL SHOES FUND

Thanks to your monetary donations to our School Shoes Fund, we're able to purchase school shoes, trainers and wellies for children in need here in the U.K.



IN-KIND DONATIONS



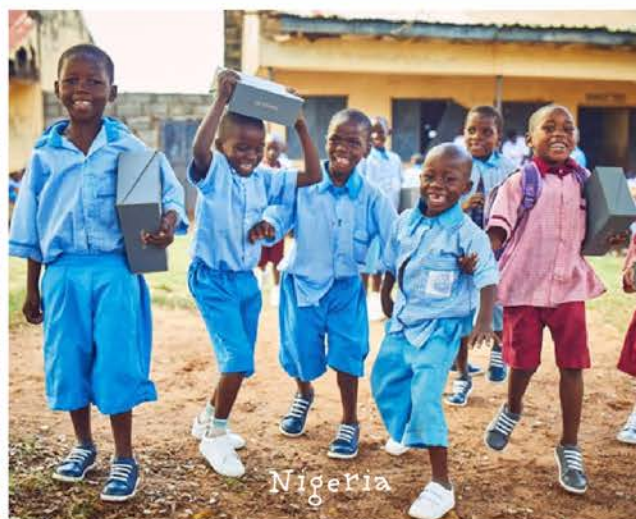
Haiti

With thanks to
our friends at:

Goods FOR Good



Nigeria



Nigeria

We feel incredibly fortunate to receive donations from retailers and manufacturers looking for a way to find good homes for end of season stock, samples and shoes that may have slight cosmetic flaws, but are otherwise perfect and ready to be put to use.

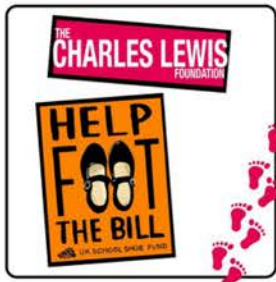


Ghana



FUNDING

As a relatively small charity, often our only real limitation is financial. As well as asking our donors to donate £1 per pair of shoes, we are grateful to have received grants from these organisations:



Some of our media coverage throughout the year:



Why dignity is the kindest gift

The UK cost of living crisis has meant more people relying on food banks and donated goods to get by. But how does this impact people's sense of dignity? Two projects offer a refreshing take on what it means to give and receive

Written by David Sheppard. Near partner by David Sheppard.

By the time David Sheppard opened his 'second supermarket' in October 2020, he had no idea it would grow to support hundreds of people. When the pandemic first struck, 20 people came to his shop, which was run by volunteers to offer others assistance from collecting prescriptions and shopping, to dog-walking and more. After receiving some funding through her local council commissioning group, he began offering food vouchers too, and the food pantry was born.

"The medical centre's social prescribing unit discovered that 47 per cent of the surgery's appointments were for people who didn't really need to see a GP," Jones says. "The requests came down to children, anxiety and other things, but also things like poverty and food poverty. So, they were very keen to be involved in the setting up of the pantry."

Food poverty is growing in the UK. In 2017-18, the food bank charity the National Food Bank reported that nearly 250,000 people, rising to 2.5 million people in 2020.

At the time, Jones was based in the town of Sharnbrook, Bedfordshire, where he runs a small business. He had no idea it would grow to support hundreds of people. When the pandemic first struck, 20 people came to his shop, which was run by volunteers to offer others assistance from collecting prescriptions and shopping, to dog-walking and more. After receiving some funding through her local council commissioning group, he began offering food vouchers too, and the food pantry was born.

"The medical centre's social prescribing unit discovered that 47 per cent of the surgery's appointments were for people who didn't really need to see a GP," Jones says. "The requests came down to children, anxiety and other things, but also things like poverty and food poverty. So, they were very keen to be involved in the setting up of the pantry."

Food poverty is growing in the UK. In 2017-18, the food bank charity the National Food Bank reported that nearly 250,000 people, rising to 2.5 million people in 2020.



OUR VOLUNTEERS

“Sal's Shoes provides a safe environment - you feel supported, accepted and included, a member of the team - you belong. When I needed a change of pace, an alternate environment and to be in a place where I could just be me and forget everything else, I chose Sal's Shoes. I feel that I have had more support from the engagement with Sal's Shoes than they have had from me. It really has been an amazing place to go and gain a completely different change of pace mentally and you'll get a fair amount of steps in!”

Ashlee
Corporate volunteer
S & P Global



“Sal's has enabled me to give back and feel part of a team, while being flexible so I can continue to take care of my family. I feel proud of what we have achieved over the last 8 years together. Starting from packing shoes in CJ's house to delivering outgrown but not outworn preloved shoes to so many countries around the world including within the UK. I've also made some amazing friends along the way.”

Louise
One of our longest
serving volunteers



“I have regularly volunteered over the last few years through corporate volunteer days. I enjoy doing something different to the regular day to day work and the volunteering provides a sense of enormous satisfaction. It feels like you are giving back to local communities.”

Charles
Corporate volunteer
Veson Nautical



“All I was doing constantly was liking the images and posts I saw on social media. I decided to take it a step further and see how Sal's Shoes really achieved their great work. I love my Thursday mornings at HQ sorting, sizing and packing preloved shoes to be sent around the U.K. and the world. I get a great buzz from helping especially recently sending shoes to Ukraine.”

Cathy
Retired



ONE OF THE GREATEST GIFTS YOU CAN GIVE IS YOUR TIME

All of the shoes we receive are sorted and packed by volunteers before setting off to find their new owners.

SAL'S SHOES CORPORATE VOLUNTEER DAYS

Volunteering in teams can prove hugely motivating for you and your co-workers. Working together for the day towards a common goal and often utilising new skills outside of your usual day-to-day remit. The change in environment and type of work can allow undiscovered strengths and skills to shine through.

WE WELCOME INDIVIDUALS OR TEAMS OF UP TO 10 PEOPLE AT:



SAL'S SHOES WAREHOUSE EDENBRIDGE, KENT

SORTING AND PACKING SHOES.

There is parking on site and direct rail links to London with the station close by



HACKNEY FAMILY CENTRE, LONDON

SORTING AND PACKING CLOTHING AND OTHER ESSENTIALS.

The Family Centre incorporates a Sal's Shoes area for families with children in need, 0-5yrs

If your company offers paid volunteering as part of their Corporate Social Responsibility policy or you are part of a team or an individual who wants to help a good cause, we'd love to hear from you. We kindly ask for a company financial contribution of £25 per corporate volunteer, which helps support our work.

DISTRIBUTIONS



South Africa



Uganda



Syria



Ukraine



France



Zambia



Ghana



U.K.

Just some of the countries your Sal's Shoes have found their new feet in this year:

HOW YOU CAN HELP...

DONATE SHOES: We collect ALL types of children's shoes in all sizes so long as the adult sizes are still child appropriate and practical footwear (no heels please!)



Have your children, or you, grown out of any shoes that still have plenty of wear left in them? Could you donate these so that they can find their next pair of feet?



The £1/pair donation pays for the journey the shoes go on to find their new feet.



DONATE TO OUR SCHOOL SHOES FUND: This allows us to buy school children in need, here in the UK, a new pair of school shoes.



Could you make a monetary donation to help give a child in need an extra spring in their step?



IN KIND DONATIONS: we work with lots of retailers and manufacturers to save end of line stock, and shoes with cosmetic flaws, from landfill.



Could your company donate end of line stock, or shoes manufactured with a cosmetic flaw to protect children's feet from injury and infection?



TAKE PART IN TOE TO TOE-OUR END OF THE ACADEMIC YEAR SCHOOL SHOES DRIVE: if school shoes are likely to be outgrown over our long school holidays, we can find them new feet and get them back into education.



Could your school join the hundreds of others that take part in this campaign each year?



VOLUNTEER: All of the shoes we receive are sorted, itemised and packed by volunteers before being sent off to find their new feet.



Could you give us your time, or organise a team away day? We have a core team of volunteers, and also host visiting groups of volunteers and companies utilising charity days.



HOW YOUR SHOES FIND NEW FEET

YOU OUTGROW YOUR SHOES BUT THERE'S STILL LOTS OF WEAR LEFT IN THEM.



SO YOU GIVE THEM A QUICK CLEAN AND MAKE SURE THEY'VE GOT LACES IF THEY NEED THEM.



THEN YOU PAIR THEM TOGETHER WITH A RUBBER BAND.



POP THEM IN THE POST (OR ORGANISE A COURIER IF YOU'VE GOT LOTS OF PAIRS).



DONATE £1 FOR EVERY PAIR YOU SEND TO US.



WE ACCEPT DONATIONS THROUGH OUR WEBSITE, PAYPAL OR BANK TRANSFER.

EACH POUND FUNDS THE NEXT JOURNEY YOUR SHOES WILL GO ON TO FIND THEIR NEW PAIR OF FEET.



SHOES ARRIVE WITH US AND OUR VOLUNTEERS SORT THEM ALL OUT AT OUR WAREHOUSE.



YOUR SHOES THEN SET OFF ON A JOURNEY TO FIND THEIR NEW OWNER.



WE KNOW WHERE EVERY SINGLE PAIR STARTS WALKING AGAIN. THEY GO TO ALL SORTS OF PLACES IN THE UK AND AROUND THE WORLD.



IN THE UK, YOUR SAL'S SHOES FIND THEIR NEW FEET AT ALL SORTS OF PLACES INCLUDING SCHOOLS, SOUP KITCHENS, HOMELESS SHELTERS, DOMESTIC VIOLENCE REFUGES, ASYLUM SEEKER AND REFUGEE CENTRES AND THROUGH SOCIAL WORKERS.



WE DO WHAT WE DO BECAUSE FEET IN SHOES ARE FEET PROTECTED FROM INJURY AND INFECTION.



YOUR DIFFERENT TYPES OF SHOES MEAN WE CAN HELP PEOPLE IN DIFFERENT WAYS: GOING TO SCHOOL, PLAYING FOOTBALL, PROTECTING FEET FROM THE SUN, THE RAIN AND THE COLD, DANCING FEET AND RUNNING FEET JUST TO NAME A FEW.



CAN YOU HELP US PROTECT MORE FEET?



THIS IS WHERE YOUR SAL'S
SHOES HAVE BEEN FINDING
THEIR NEW FEET THIS YEAR:

Around the world

 **BELGIUM**

 **FRANCE**

 **DJIBOUTI**

 **DOMINICAN REPUBLIC**

 **GHANA**

 **HAITI**

 **HONDURAS**

 **KENYA**

 **LEBANON**

 **MOLDOVA**

 **NIGERIA**

 **PORTUGAL**

 **SOUTH AFRICA**

 **SOUTH SUDAN**

 **SYRIA**

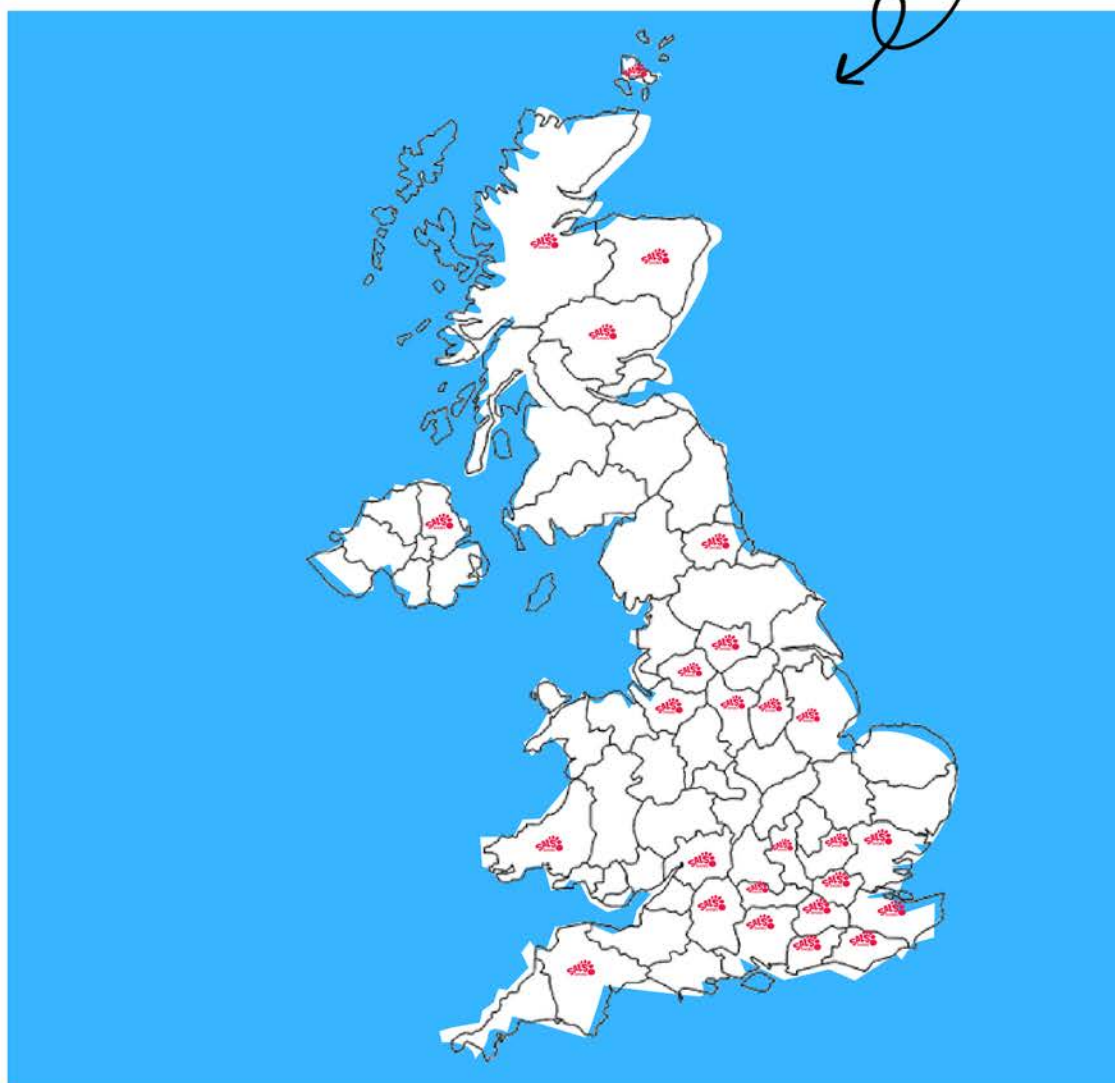
 **UGANDA**

 **UKRAINE**

 **ZAMBIA**

 **ZANZIBAR**

Across the U.K.



YOU CAN MAKE A DONATION
TO SUPPORT OUR WORK HERE:

Donate via PayPal

Donate via our website



TEXT **SALSSHOES**
TO **70450**

FOLLOWED BY YOUR DONATION AMOUNT

Texts will cost the donation amount plus one
standard network rate message. You can
donate between £1 - £10.

Sal's Shoes is a registered charity in
England & Wales.

Registered Charity Number: 1171670.

All images provided by Sal's Shoes.

Logo by rslcreative.com.

Newsletter by Source It Out.

Copyright remains with respective owners.

SAL'S SHOES

INDEPENDENT EXAMINER'S REPORT FOR THE YEAR ENDED 30 JUNE 2022

Independent Examiner's Report to the Trustees of Sal's Shoes

I report to the trustees on my examination of the accounts of Sals Shoes ('the charity') for the year ended 30 June 2022 which comprise the summary of receipts and payments and the statement of assets and liabilities.

This report is made solely to the charity's trustees, as a body, in accordance with section 145 of the Charities Act 2011. My work has been undertaken so that I might state to the charity's trustees those matters I am required to state to them in this report and for no other purpose. To the fullest extent permitted by law, I do not accept or assume responsibility to anyone other than the charity and the charity's trustees as a body, for my work, for this report, or for the opinions I have formed.

Responsibilities and basis of report

As the trustees of the charity you are responsible for the preparation of the accounts in accordance with the requirements of the Charities Act 2011 ('the Act').

I report in respect of my examination of the charity's accounts carried out under section 145 of the Act and in carrying out my examination I have followed all the applicable Directions given by the Charity Commission under section 145(5)(b) of the Act.

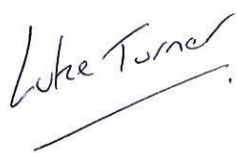
An independent examination does not involve gathering all the evidence that would be required in an audit and consequently does not cover all the matters that an auditor considers in giving their opinion on the accounts. The planning and conduct of an audit goes beyond the limited assurance that an independent examination can provide. Consequently I express no audit opinion on the accounts and my report is limited to those specific matters set out in the independent examiner's statement.

Independent examiner's statement

I have completed my examination. I confirm that no material matters have come to my attention in connection with the examination giving me cause to believe that in any material respect:

- accounting records were not kept in respect of the charity as required by section 130 of the Act; or
- the accounts do not accord with those records.

I have no concerns and have come across no other matters in connection with the examination to which attention should be drawn in this report in order to enable a proper understanding of the accounts to be reached.



Signed:

Date: 04/11/2022

Luke Turner ACA FCCA

Magma Audit LLP

Unit 2, Charnwood Edge Business Park
Syston Road
Cossington
Leicester
LE7 4UZ



Receipts and payments accounts

CC16a

For the period
from

01/07/2021

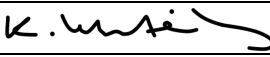
To

30/06/2022

Section A Receipts and payments

	Unrestricted funds	Restricted funds	Endowment funds	Total funds	Last year
	to the nearest £	to the nearest £	to the nearest £	to the nearest £	to the nearest £
A1 Receipts					
Grants/Donations	126,062	42,000	-	168,062	108,780
VAT reimbursed	11,336	-	-	11,336	8,202
Trustee loan to charity	-	-	-	-	1,000
	-	-	-	-	-
	-	-	-	-	-
	-	-	-	-	-
	-	-	-	-	-
Sub total (Gross income for AR)	137,398	42,000	-	179,398	117,982
A2 Asset and investment sales, (see table).					
	-	-	-	-	-
	-	-	-	-	-
Sub total	-	-	-	-	-
Total receipts	137,398	42,000	-	179,398	117,982
A3 Payments					
Carriage - donated goods	13,455	5,264	-	18,719	11,730
Volunteer expenses	1,015	-	-	1,015	255
Staff training	-	-	-	-	565
Purchase of shoe stock	20,218	12,000	-	32,218	17,501
Travel expenses	783	-	-	783	40
Advertising, marketing & social media	8,087	-	-	8,087	9,560
IT costs	2,321	-	-	2,321	1,014
Administration	14,991	-	-	14,991	7,970
Rent & premises	41,055	2,000	-	43,055	42,176
Insurance	477	-	-	477	-
Telephone	1,465	-	-	1,465	2,193
Plant and machinery equipment	3,364	-	-	3,364	1,039
Subscriptions	782	-	-	782	630
Accountancy	2,600	-	-	2,600	1,200
Consultancy fees	6,700	-	-	6,700	4,700
VAT on expenditure	13,399	-	-	13,399	8,626
Bank charges	19	-	-	19	157
Wages, NIC and pension	-	11,724	-	11,724	-
Trustee reimbursed expenses	1,644	-	-	1,644	1,080
	-	-	-	-	-
	-	-	-	-	-
Sub total	132,375	30,988	-	163,363	110,436
A4 Asset and investment purchases, (see table)					
	-	-	-	-	-
	-	-	-	-	-
Sub total	-	-	-	-	-
Total payments	132,375	30,988	-	163,363	110,436
Net of receipts/(payments)	5,023	11,012	-	16,035	7,546
A5 Transfers between funds	-	-	-	-	-
A6 Cash funds last year end	1,901	7,264	-	9,165	1,619
Cash funds this year end	6,924	18,276	-	25,200	9,165

Section B Statement of assets and liabilities at the end of the period

Categories	Details	Unrestricted funds to nearest £	Restricted funds to nearest £	Endowment funds to nearest £
B1 Cash funds	Bank	6,719	18,276	-
	Cash	205	-	-
		-	-	-
	Total cash funds	6,924	18,276	-
	(agree balances with receipts and payments account(s))	OK	OK	OK
B2 Other monetary assets	Details	Unrestricted funds to nearest £	Restricted funds to nearest £	Endowment funds to nearest £
	VAT refund	4,318	-	-
	Other debtor	512	-	-
		-	-	-
		-	-	-
		-	-	-
	Total	4,830	-	-
B3 Investment assets	Details	Fund to which asset belongs	Cost (optional)	Current value (optional)
			-	-
			-	-
			-	-
			-	-
B4 Assets retained for the charity's own use	Details	Fund to which asset belongs	Cost (optional)	Current value (optional)
	Office equipment	5,312	-	-
	Plant and machinery	793	-	-
			-	-
			-	-
			-	-
			-	-
	Total	6,105	-	-
B5 Liabilities	Details	Fund to which liability relates	Amount due (optional)	When due (optional)
	Accountancy	800	-	
	Other creditor	1,082	-	
			-	
	Total	1,882	-	
Signed by one or two trustees on behalf of all the trustees		Signature	Print Name	Date of approval
			Katie Whiteley	04/11/2022

SAL'S SHOES

INDEPENDENT EXAMINER'S REPORT FOR THE YEAR ENDED 30 JUNE 2022

Independent Examiner's Report to the Trustees of Sal's Shoes

I report to the trustees on my examination of the accounts of Sals Shoes ('the charity') for the year ended 30 June 2022 which comprise the summary of receipts and payments and the statement of assets and liabilities.

This report is made solely to the charity's trustees, as a body, in accordance with section 145 of the Charities Act 2011. My work has been undertaken so that I might state to the charity's trustees those matters I am required to state to them in this report and for no other purpose. To the fullest extent permitted by law, I do not accept or assume responsibility to anyone other than the charity and the charity's trustees as a body, for my work, for this report, or for the opinions I have formed.

Responsibilities and basis of report

As the trustees of the charity you are responsible for the preparation of the accounts in accordance with the requirements of the Charities Act 2011 ('the Act').

I report in respect of my examination of the charity's accounts carried out under section 145 of the Act and in carrying out my examination I have followed all the applicable Directions given by the Charity Commission under section 145(5)(b) of the Act.

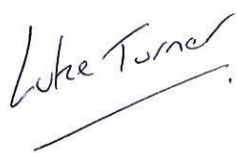
An independent examination does not involve gathering all the evidence that would be required in an audit and consequently does not cover all the matters that an auditor considers in giving their opinion on the accounts. The planning and conduct of an audit goes beyond the limited assurance that an independent examination can provide. Consequently I express no audit opinion on the accounts and my report is limited to those specific matters set out in the independent examiner's statement.

Independent examiner's statement

I have completed my examination. I confirm that no material matters have come to my attention in connection with the examination giving me cause to believe that in any material respect:

- accounting records were not kept in respect of the charity as required by section 130 of the Act; or
- the accounts do not accord with those records.

I have no concerns and have come across no other matters in connection with the examination to which attention should be drawn in this report in order to enable a proper understanding of the accounts to be reached.



Signed:

Date: 04/11/2022

Luke Turner ACA FCCA

Magma Audit LLP

Unit 2, Charnwood Edge Business Park
Syston Road
Cossington
Leicester
LE7 4UZ



Receipts and payments accounts

CC16a

For the period
from

01/07/2021

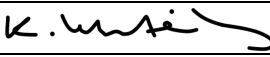
To

30/06/2022

Section A Receipts and payments

	Unrestricted funds	Restricted funds	Endowment funds	Total funds	Last year
	to the nearest £	to the nearest £	to the nearest £	to the nearest £	to the nearest £
A1 Receipts					
Grants/Donations	126,062	42,000	-	168,062	108,780
VAT reimbursed	11,336	-	-	11,336	8,202
Trustee loan to charity	-	-	-	-	1,000
	-	-	-	-	-
	-	-	-	-	-
	-	-	-	-	-
	-	-	-	-	-
Sub total (Gross income for AR)	137,398	42,000	-	179,398	117,982
A2 Asset and investment sales, (see table).					
	-	-	-	-	-
	-	-	-	-	-
Sub total	-	-	-	-	-
Total receipts	137,398	42,000	-	179,398	117,982
A3 Payments					
Carriage - donated goods	13,455	5,264	-	18,719	11,730
Volunteer expenses	1,015	-	-	1,015	255
Staff training	-	-	-	-	565
Purchase of shoe stock	20,218	12,000	-	32,218	17,501
Travel expenses	783	-	-	783	40
Advertising, marketing & social media	8,087	-	-	8,087	9,560
IT costs	2,321	-	-	2,321	1,014
Administration	14,991	-	-	14,991	7,970
Rent & premises	41,055	2,000	-	43,055	42,176
Insurance	477	-	-	477	-
Telephone	1,465	-	-	1,465	2,193
Plant and machinery equipment	3,364	-	-	3,364	1,039
Subscriptions	782	-	-	782	630
Accountancy	2,600	-	-	2,600	1,200
Consultancy fees	6,700	-	-	6,700	4,700
VAT on expenditure	13,399	-	-	13,399	8,626
Bank charges	19	-	-	19	157
Wages, NIC and pension	-	11,724	-	11,724	-
Trustee reimbursed expenses	1,644	-	-	1,644	1,080
	-	-	-	-	-
	-	-	-	-	-
Sub total	132,375	30,988	-	163,363	110,436
A4 Asset and investment purchases, (see table)					
	-	-	-	-	-
	-	-	-	-	-
Sub total	-	-	-	-	-
Total payments	132,375	30,988	-	163,363	110,436
Net of receipts/(payments)	5,023	11,012	-	16,035	7,546
A5 Transfers between funds	-	-	-	-	-
A6 Cash funds last year end	1,901	7,264	-	9,165	1,619
Cash funds this year end	6,924	18,276	-	25,200	9,165

Section B Statement of assets and liabilities at the end of the period

Categories	Details	Unrestricted funds to nearest £	Restricted funds to nearest £	Endowment funds to nearest £
B1 Cash funds	Bank	6,719	18,276	-
	Cash	205	-	-
		-	-	-
	Total cash funds	6,924	18,276	-
	(agree balances with receipts and payments account(s))	OK	OK	OK
B2 Other monetary assets	Details	Unrestricted funds to nearest £	Restricted funds to nearest £	Endowment funds to nearest £
	VAT refund	4,318	-	-
	Other debtor	512	-	-
		-	-	-
		-	-	-
		-	-	-
	Total	4,830	-	-
B3 Investment assets	Details	Fund to which asset belongs	Cost (optional)	Current value (optional)
			-	-
			-	-
			-	-
			-	-
			-	-
B4 Assets retained for the charity's own use	Details	Fund to which asset belongs	Cost (optional)	Current value (optional)
	Office equipment	5,312	-	-
	Plant and machinery	793	-	-
			-	-
			-	-
			-	-
			-	-
			-	-
	Total	6,105	-	-
B5 Liabilities	Details	Fund to which liability relates	Amount due (optional)	When due (optional)
	Accountancy	800	-	
	Other creditor	1,082	-	
			-	
			-	
	Total	1,882	-	
Signed by one or two trustees on behalf of all the trustees		Signature	Print Name	Date of approval
			Katie Whiteley	04/11/2022