

Derbyshire Japanese School

Report and Financial Statements

31 March 2022

Notes to the financial statements

at 31 March 2022

Trustees	Representative		
Toyota Motor Manufacturing (UK) Ltd	Mr. Kawata (Chair of the Board)	(Appointed 1 January 2022)	
Toyota Motor Manufacturing (UK) Ltd	Mr. Kuroda (Chair of the Committee)		(Committee)
Toyota Motor Manufacturing (UK) Ltd	Mr. Oi		(Committee)
Toyota Tsusho U.K. Ltd	Mr. Sayama		
Aisin Europe Manufacturing (UK) Ltd	Mr. Shimizu	(Appointed 5 March 2021)	
Aioi Nissay Dowa Europe Ltd	Miss Mori	(Appointed 8 March 2021)	
Bank of Tokyo Mitsubishi (UK) Ltd	Mr. Toyokawa	(Resigned 17 November 2021)	
Koito Europe Ltd	Mr. Ishida		
Mitsui Marine Insurance, EU Ltd	Mr. Kannari		
Nippon Express UK Ltd	Mr. Saito		
NSK Europe Ltd	Mr. Kamura	(Resigned 30 November 2021)	
NSK Europe Ltd	Mr. Nakagawa	(Appointed 30 November 2021)	
NTN Bearings (UK) Ltd	Mr. Shibata		
Toyoda Gosei UK Ltd	Mr. Kimura		
M.O. Air International (UK) Ltd	Mr. Kozai		
Sumitomo Electric Wires Sys EU Ltd	Mr. Sakai		
Sumitomo Precision Products Co Ltd	Mr. Miyoshi		
Kawasaki Heavy Industries (UK) Ltd.	Mr. Hiyama	(Appointed 7 April 2021)	
Hitachi Information Control Systems Europe Ltd.	Mr. Kashimura	(Resigned 7 April. 2022)	
Koyo Bearings (Europe) LTD	Mr. Kotani	(Appointed 7 April 2021)	(Committee)
Toyota Motor Manufacturing (UK) Ltd	Mr. Saito	(Appointed 7 January 2022)	(Committee)
Toyota Motor Manufacturing (UK) Ltd	Mr. Suganuma		(Committee)

Principal address

Derbyshire Japanese School
c/o John Port Spencer Academy, Main Street, Etwall, Derby DE65 6LU

Correspondence address

Derbyshire Japanese School
c/o John Port Spencer Academy, Main Street, Etwall, Derby DE65 6LU

Notes to the financial statements

at 31 March 2022

The Trustees present their report and financial statements for the year ended 31 March 2022.

The financial statements have been prepared on the accounting policies set out in note 1 and comply with the charity's trust deed, applicable law and the requirements of the Statement of Recommended Practice, "Accounting and Reporting by Charities".

Objects

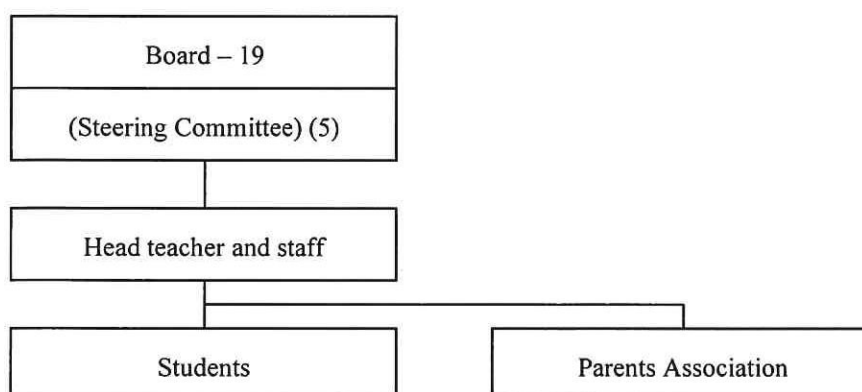
- To advance the education, physical and social training of any children aged 5 to 18 years of age and in particular to further their knowledge of Japanese culture and language in accordance with Japanese educational principles.
- To provide education to the children of Japanese parents temporarily or permanently resident in the United Kingdom.

Organisational structure

The school is run by a Board made up of members of the school. Membership is subject to approval by the Annual General Meeting of the school and is open to companies and individuals who have made a significant contribution to the school and paid annual subscriptions. Current members are listed on page 1.

The Board elects a steering committee at the Annual General meeting to direct the day to day management of the affairs of the school. Members of the Committee are marked on page 1.

The chairman for the year was Mr Kawata of Toyota Motor Manufacturing (UK) Limited. The chairman for the Steering Committee was Mr Kuroda of the Toyota Motor Manufacturing (UK) Limited; There has been no vice-chairman this year. The treasurer was Mr Oi of Toyota Motor Europe.



Activities for the year

As of 31 March 2022 the school had a total of 64 (2021 - 87) students varying in age from 5 to 18 and including a small number of English children. Preschool was newly established in April/2020 and total thirteen classes were held each Saturday. All pupils successfully completed internal examinations to continue to the next grade and attendance was maintained at over 80%.

Notes to the financial statements

at 31 March 2022

Financial results

The school was pleased to report income at £123,294(2021 - £133,561). However, teacher salaries of £110,758 (2021 - £98,186) was major expense for the year and accounted for 87% (2021 - 82%) of expenditure. Other major items of expenditure were books and publications at £6,529(2021 - £9,164) and educational supplies at £624 (2021 - £936).

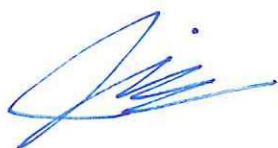
Statement of trustees' responsibilities in respect of the financial statements

The Trustees are responsible for the preparation of financial statements for each financial year which gives a true and fair view of the state of affairs of The Charity and of the income and expenditure of the Charity for that year. In order for those financial statements to give a true and fair view, the Trustees are required to:

- select suitable accounting policies and then apply them consistently;
- make judgements and estimates that are reasonable and prudent;
- state whether applicable accounting standards and statements of recommended practice have been followed subject to any departures disclosed and explained in the financial statements;
- prepare the financial statements on the going concern basis unless it is inappropriate to presume that the Charity will continue in operation.

The Trustees are responsible for keeping proper accounting records which disclose with reasonable accuracy at any time the financial position of the Charity and enable them to ensure that the financial statements comply with the Charities Act 1993. The Trustees are also responsible for safeguarding the assets of the Charity and hence for taking reasonable steps for the prevention and detection of fraud and other irregularities.

On behalf of the board



J. Kuroda
Chairman of the Steering Committee

04 January 2023

Independent Examiner's Report

Report to the trustees/
members of

DERBY JAPANESE SCHOOL

On accounts for the year ended

31st MARCH 2022

Charity no
(if any)

1047319

Set out on pages

Five to Ten

Respective responsibilities of
trustees and examiner

The charity's trustees consider that an audit is not required for this year (under section 43(2) of the Charities Act 1993 (the Act), as amended by s.28 of the Charities Act 2006) and that an independent examination is needed.

It is my responsibility to:

- examine the accounts (under section 43 of the Act, as amended),
- to follow the procedures laid down in the General Directions given by the Charity Commission (under section 43(7)(b) of the Act, as amended), and
- to state whether particular matters have come to my attention.

Basis of independent
examiner's statement

My examination was carried out in accordance with General Directions given by the Charity Commission. An examination includes a review of the accounting records kept by the charity and a comparison of the accounts presented with those records. It also includes consideration of any unusual items or disclosures in the accounts, and seeking explanations from the trustees concerning any such matters. The procedures undertaken do not provide all the evidence that would be required in an audit, and consequently I do not express an audit opinion on the accounts.

Independent
examiner's statement

In the course of my examination, no matter has come to my attention -

1. which gives me reasonable cause to believe that in, any material respect, the trustees have not met the requirements to ensure that:

- proper accounting records are kept (in accordance with section 41 of the Act); and
- accounts are prepared which agree with the accounting records and comply with the accounting requirements of the Act; or

2. to which, in my opinion, attention should be drawn in order to enable a proper understanding of the accounts to be reached.

Signed: 

Date: 03/01/23

Name: David Avery

Relevant professional
qualification(s) or body (if any):

Associate, Chartered Institute of Management Accountants

Address:

c/o TOYOTA MOTOR MANUFACTURING (UK) LTD
Burnaston, Derbyshire, East Midlands, DE1 9TA, United Kingdom

Derbyshire Japanese School

Statement of financial activities

for the year ended 31 March 2022

			<i>Total</i>	<i>Total</i>
		<i>Unrestricted</i>	<i>Restricted</i>	<i>funds</i>
		<i>funds</i>	<i>funds</i>	<i>funds</i>
	<i>Notes</i>	<i>£</i>	<i>£</i>	<i>2022</i>
				<i>£</i>
Incoming resources				
Incoming resources from generated funds:				
Bank interest receivable		140	—	140
Incoming resources from charitable activities:				
Donations	2	18,945	—	18,945
School fees	3	66,638	—	66,638
Japanese Government grants	4	—	28,409	28,409
Company subscriptions	5	6,960	—	6,960
Other	6	2,202	—	2,202
Total incoming resources		94,885	28,409	123,294
Resources expended				
Charitable activities:				
Wages and salaries (inc'd Tax, ee's NIC, Pen'n)		55,237	28,409	83,646
Social security costs (=er's NIC, Pen'n)		211	—	211
Educational supplies		624	—	624
Books and publications		6,529	—	6,529
Training		—	—	—
Postage and telephone		691	—	691
School events		863	—	863
Carriage and travel		—	—	—
Insurance		1,579	—	1,579
Depreciation		—	—	—
Other		6,216	—	6,216
Governance costs:				
Independent examiners fees	7	—	—	—
Management and administration:				
Wages and salaries (inc'd Tax, ee's NIC, Pen'n)		26,022	—	26,022
Social security costs (=er's NIC, Pen'n)		879	—	879
Total resources expended	8	98,851	28,409	127,260
Net incoming/ (outgoing) resources		-3,966	—	-3,966
Reconciliation of funds				
Total funds brought forward		231,183	—	23,1183
Total funds carried forward		227,217	—	227,217

There were no recognised gains or losses in either year other than the net outgoing movement in resources for each year.

Derbyshire Japanese School

Balance sheet

at 31 March 2022

	Notes	2022 £	2021 £
Fixed assets			
Tangible assets	10	–	–
Current assets			
Debtors	11	16,140	16,930
Cash at bank and in hand	12	211,077	214,253
		227,217	231,183
Creditors	13	–	–
Net current assets		227,217	231,183
Net assets		227,217	231,183
Accumulated funds			
Unrestricted funds	14	227,217	231,183

Approved by the board of trustees:



J. Kuroda
Chairman of the board of trustees

04 January 2023

Notes to the financial statements

at 31 March 2022

1. Accounting policies

Basis of preparation

The financial statements are prepared under the historical cost convention and comply with the Statement of Recommended Practice "Accounting and Reporting by Charities" and applicable accounting standards.

School fees

Fees receivable in respect of each school term are accounted for on an accruals basis. Entrance fees are recorded on an accruals basis.

Japanese Government grants

Japanese Government grants are accounted for on an accruals basis.

Expenditure

Expenditure is classified under the principal categories of educational (direct charitable) and other expenditure rather than the type of expense, in order to provide more useful information to users of the financial statements.

Educational expenditure comprises direct expenditure including direct staff costs attributable to the activity. Where costs cannot be directly attributed, they have been allocated to activities on a basis consistent with the use of the resources. Management and administration costs are those incurred in connection with the management of the school assets, organisational administration and compliance with constitutional and statutory requirements.

Fund accounting

General funds are available for use at the discretion of the trustees in furtherance of the general objectives of the school.

Restricted funds are funds subject to specific restriction imposed by donors.

Tangible fixed assets

Tangible fixed assets are stated at cost. Depreciation is provided on all tangible assets at rates calculated to write off the cost, less estimated residual value, of each asset evenly over its expected useful life, as follows:

Office equipment	-	4 years
------------------	---	---------

Taxation

The school has charitable organisation status and therefore is not subject to taxation.

2. Donations

Companies, when they begin association with the school, generally pay certain donations (usually according to the size of the company). In line with the accounting policy suggested by the Charity Commission, such donations have been treated as income of the school.

Notes to the financial statements

at 31 March 2022

3. School fees

	2022	2021
	£	£
Entrance	1,750	2,250
Term	64,888	69,783
	<u>66,638</u>	<u>72,033</u>

All the above fees arise from the school's activity within the United Kingdom.

4. Japanese government grants

Japanese Government grants comprise £28,409 (2021 - £34,769) in respect of locally employed teaching personnel from 1 April 2021 to 31 March 2022.

5. Company subscriptions

Companies whose personnel have children attending the school pay a subscription which is dependent on the number of children attending the school as follows:

£600 + £120 x number of children.

6. Other income

Other income mainly comprises the school annual outing, summer school and the school photograph and is receivable from the parents of the pupils.

7. Net incoming/(outgoing) resources

This is stated after charging:

	2022	2021
	£	£
Independent examiner's remuneration:		
Accountancy and other services (including VAT)	0	0
	<u>0</u>	<u>0</u>

8. Total resources expended

	Staff costs	Office costs	Total 2022	Total 2021
	£	£	£	£
Education	83,857	16,502	100,359	93,814
Management and administration of the school	26,901	—	26,901	25,459
	<u>110,758</u>	<u>16,502</u>	<u>127,260</u>	<u>119,273</u>

Notes to the financial statements

at 31 March 2022

9. Staff Cost

	2022	2021
	£	£
Wages and salaries (=Salary, Tax, ee's NIC, Pension)	109,668	97,265
Social security costs (=er's NIC,Pension)	1,090	921
	<u>110,758</u>	<u>98,186</u>

There were 15 employees (averaged monthly) (2021 - 15 employees). There was no employee earning remuneration exceeding £40,000 per annum.

10. Tangible fixed assets

	Office equipment £
Cost:	
At 1 April 2021 and 31 March 2022	—
Depreciation:	
At 1 April 2021 and 31 March 2022	—
Net book value:	
At 1 April 2021 and 31 March 2022	—

Fixed assets are used for direct charitable purposes.

11. Debtors

	2022	2021
	£	£
Due within one year:		
Grants receivable	16,140	16,930

Notes to the financial statements

at 31 March 2022

12. Cash at bank and in hand

	2022	2021
	£	£
Money market account	140,140	140,000
Current account	70,937	74,252
Petty cash	—	—
	<u>211,077</u>	<u>214,252</u>

13. Creditors

	2022	2021
	£	£
Accruals	—	—
	<u>—</u>	<u>—</u>

14. Statements of funds

	<i>At 1 April 2021 £</i>	<i>Movement in resources: Income Expenditure £ £</i>		<i>At 31 March 2022 £</i>
Unrestricted funds	231,183	94,885	98,851	227,217
Restricted funds	—	28,409	28,409	—
	<u>231,183</u>	<u>123,294</u>	<u>127,260</u>	<u>227,217</u>

Restricted funds comprise a grant from the Japanese Government, to fund salaries for Japanese teachers.

15. Trustees' remuneration and expenses

The trustees did not receive any remuneration or reimbursement of expenses from the charity in either year.

Statement of financial activities

for the year ended 31 March 2021

			<i>Total</i>	<i>Total</i>
		<i>Unrestricted</i>	<i>Restricted</i>	
		<i>funds</i>	<i>funds</i>	
	<i>Notes</i>	<i>£</i>	<i>£</i>	
Incoming resources				
Incoming resources from generated funds:				
Bank interest receivable		454	—	454 824
Incoming resources from charitable activities:				
Donations	2	12,745	—	12,745 6,625
School fees	3	72,033	—	72,033 94,955
Japanese Government grants	4	—	34,769	34,769 18,037
Company subscriptions	5	13,560	—	13,560 18,520
Other	6	—	—	— 2,648
Total incoming resources		98,792	34,769	133,561 141,609
Resources expended				
Charitable activities:				
Wages and salaries (inc'd Tax, ee's NIC, Pen'n)		37,783	34,769	72,552 92,109
Social security costs (=er's NIC, Pen'n)		175	—	175 195
Educational supplies		936	—	936 1,186
Books and publications		9,164	—	9,164 10,129
Training		—	—	— 1,250
Postage and telephone		1,447	—	1,447 549
School events		—	—	— 456
Carriage and travel		28	—	28 26
Insurance		1,647	—	1,647 1,746
Depreciation		—	—	— —
Other		7,865	—	7,865 10,566
Governance costs:				
Independent examiners fees	7	—	—	— —
Management and administration:				
Wages and salaries (inc'd Tax, ee's NIC, Pen'n)		24,713	—	24,713 28,976
Social security costs (=er's NIC, Pen'n)		746	—	746 660
Total resources expended	8	84,504	34,769	119,273 147,838
Net incoming/ (outgoing) resources		14,288	—	14,288 -6,229
Reconciliation of funds				
Total funds brought forward		216,896	—	216,89 223,125
Total funds carried forward		231,184	—	231,184 216,896

There were no recognised gains or losses in either year other than the net outgoing movement in resources for each year.