



The Lloyd Park Children's Charity Trustees' Annual Report

(A Company Limited by Guarantee)

Annual Report and Financial Statement for the Year Ended 31st March 2023

Company Registration Number 04802332

Charity Registration Number 1102134

**Lloyd Park
Children's Charity**

Charity Number 1102134

Contents Page

Page	
1-2	Objectives and Activities
3-9	Strategic Report
10	Financial Review
11-12	Structure, Governance and Management
13	Statement of Trustees' Responsibilities
14	Reference and Administration Details
15-19	Auditors Report
20	Statement of Financial Activities
21	Balance Sheet
22-23	Accounting Policies
24-37	Notes to the Financial Statements

Objectives and Activities

Our Objects are to enhance the development and education of children and young people by:

Offering play, education and care facilities for children and families, ensuring opportunities for all children whatever their race, culture, religion, means, ability or disadvantage;

Working with families and communities to support children in need to preserve and protect good health and wellbeing and promote child development;

Encouraging the study of the needs of children and their families and promoting public interest in and recognition of such needs.

Our mission is to build brighter futures for children and families

Our Services



Family Wellbeing

We work in partnership with families and help parents to overcome the devastating impact of trauma and adversity.



Community Play

We promote strong communities. Children and families make friends, overcome isolation and build networks of support.



Childcare and Education

We offer an inclusive and stimulating learning environment where children are resilient and independent.



Baby Bank

We give resources, information and support to families in crisis. Families make friends and build support networks.

Objectives and Activities

Our main services are based in centres across the London Borough of Waltham Forest but work with children and families from a wider geographical community.



Our vision

Equality
Good health
Excellent education
Family wellbeing
A sense of belonging
Greener lives

Our values

- Keeping children safe
- Building strength and resilience
- Making a difference
- Child centred
- Equality and fairness

Public Benefit

Our Trustees have due regard to the Charity Commission's public benefit guidance, under Section 17 of the Charity's Act 2011. We meet these requirements through our mission to tackle inequality and ensure every child reaches their potential.

Strategic Report

1124 Grow Wild

for outdoor and indoor play, child development support and opportunities to make friends

3365 Community play

for a range of play, health and family support activities

554 Baby Bank

for families in crisis providing emergency packages of support

445 Somewhere to Belong

for support to children with SEND and their families

1,091 Family Wellbeing

for family support, social prescribing and wellbeing support

313 Children's Care and Education

For childcare for children from 3 months to ten years.

1210 other community services

Including health, counselling and community events.

**This year we
helped 8102
people**

Education and Care

Our Aims

To tackle inequality and widen inclusion, and develop our child centred pedagogy. We wanted stimulating learning environments where children excel in the prime areas of learning. We wanted to be better at supporting children who have experienced trauma and adversity.

This year

We spent £2,146,991 providing childcare for 313 children from 0-11 years.

Our three settings in Walthamstow and Chingford provided full and part time care and education, tea time clubs and holiday schemes. Ofsted found all settings provided good quality provision.

"I love coming to nursery. I get to play with my friends, I like being outside in the garden jumping on the crash mat and playing with the trains in the construction area."

"Children show that they are very happy in this warm and welcoming nursery. They show that they feel secure through their positive engagement in a range of fun and stimulating activities. Children benefit from attentive and respectful interactions from staff" (Valley Centre Ofsted, 2022).

Learning Stories

This year we introduced 'Learning Stories' to document and assess children's learning. The story highlights a significant moment for a child, describing their strengths, interests, exploration and play.

Using photographs, observations and quotes from the setting and at home, we create a 'picture' of learning that is unique to each child. They are shared with parents and available in the setting for children to enjoy.

Originating from New Zealand's Te whariki curriculum, Learning Stories aim to understand children's lived experiences and the meaning they make of them.

Tackling Inequality

We are committed to enhancing the ways we support children to have a positive early years experience, particularly those who are disadvantaged.

Our support for children with Special Educational Needs and Disabilities (SEND) has seen significant improvements, including enhancing our environment, undertaking comprehensive training and strengthening our collaboration with new and existing partners.

We have helped many vulnerable families secure childcare, and have sponsored four children to enjoy an extended day at nursery, including a hot meal.

Ready for School

Thanks to £20,547 funding from Peabody, our Ready for School project works with children and their families who live in the Peabody estate during the term before they start school and the reception year.

This has been hugely successful with all children achieving progress in-line or above their peers from more affluent communities.

Supporting Families

Our Aims

We offer a holistic approach and help families take greater control of their lives.

We support social, emotional and practical needs and help families access the services that are right for them.

Early Years Social Prescribing

The team offers 1:1 support to help families identify their needs and supports them to access the right services to meet those needs. These could be our own services or those provided by trusted partners.

Children and Family Centres (C&FC)

We're proud to deliver C&FC services on behalf of London Borough of Waltham Forest through a contract for £1,071,000. We run universal and targeted play, health and family support services for families living in the Borough.

Wellbeing Project

Thanks to funding from London Borough of Waltham Forest we're providing therapeutic support on-line and in person.

Our sessions are delivered by an accredited BACP Psychotherapist. They offer a safe, calm, non-judgemental and relaxing space for women to increase emotional wellbeing.

Through the open culture of talking about mental health, parents develop strong connections and support amongst each other.

Children are making significant progress in personal, social and emotional development and improvements in their relationship and attachment with their parents.



Impact

120 individuals were helped through The Wellbeing Project.

Women who attended the groups reported improvements to their lives, including:

- Improved mental health and wellbeing.
- Feeling valued
- Building self-esteem, self-worth and resilience.
- Making new friends and building networks of support

"I call the therapy group 'My helping hand' and I believe it is the same for all the other mums. We have different backgrounds, religion, cultures and skin colour and we all come to this one place to help each other. This place makes me feel safe and I don't feel judged. So many beautiful women here sharing themselves and being able to lift someone up. It is so rewarding."

Grow Wild

Our Aims

Grow Wild is our natural adventure playground.

We provide opportunities for children to engage in risky play and enjoy sensory experiences that help develop greater physical control of their bodies.

Last year we spent £61,681 providing open door sessions and groups targeting specific children who benefit from new opportunities.

Rainbow Group

This is a co-produced session for LGBTQ+ families to meet others, build friendships and have fun in the outdoors. We have 7 regular volunteers and parents offer support to others through the adoption process.

Forever Families

This is a co-produced session for adopted children and their families. The team and parents are working together to support children's resilience and wellbeing.

Family Grow Wild

We introduced Family Grow Wild this year based on feedback from families who work during weekdays and wanted to enjoy Grow Wild together as a family at weekends. It's been a great success.

Early Years and School Visits

Local schools and early years settings visit Grow Wild for special outings, often using their Pupil Premium to support individual children's learning and development.

We'd like to thank our partner schools for a successful year of collaboration.

One Forever Family parent said...

"Now we can all join and talk about our experiences but not just talk and compare, but celebrate what we are involved in."



Baby Bank

Our Aims

Our baby bank supports families in Waltham Forest and beyond who are in urgent need of help.

Household Support

Working in partnership with The London Borough of Waltham Forest, the Baby Bank became a distributor of the Household Support Grant, providing £80,250 to support 201 families in crisis.

Parents choose how to use the support, and received funds towards food, utility bills or other essential costs.

Children's Learning

We work in partnership with parents to promote children's learning and development. As parents increase in confidence they start to explore new ways to support their child and follow their child's interests.

Our service

The Baby Bank is like a food bank but it supports families with baby essentials.

We offer whole family assessments to help families identify the support they need. We work in partnership to plan, monitor and evaluate their support until they have overcome the challenges they face.

Isolated families are engaged more in community life. We support them to build social and support networks, improve confidence and resilience and encourage families to use their lived experience to help others.

Our supporters

We would like to thank those who have volunteered and supported our Baby Bank through donations, including:

Justham Trust £10,000
BBC Children in Need £24,850
Voucher Express £3685
Partnership Tesco which raised £83 in store collection and £197 through the sale of donated clothes



"I just want to say massive thank you. You and your team have been very helpful to provide all necessary items such as food, clothing and even toys, when I found myself with no roof over my head with my two kids.

You went above and beyond to bring birthday cake to my son's birthday, which I will never forget.

I had no place to go with my two kids, but with Baby Bank's support, now we have a safe and warm place to stay. Thanks again!"

Somewhere to Belong

Our Aims

To work in partnership with parents and other professionals to ensure services and support for children with SEND and their families are accessible at the earliest possible time.

Carousel of Support

Somewhere to Belong is a research and evidence based play and support group for babies and young children with emerging or identified developmental delay/ disabilities and their families.

It is based on the 'carousel model' led by our charity in partnership with other SEND professionals offering families a carousel of services and support.

Thanks to London Borough of Waltham Forest for £1400 funding towards our group.

"Thank you so much for your help with SENIF and EHCP, I do not understand without you. Thanks for fighting for my child."

Fathers

Fathers of children with SEND told us that they wanted an opportunity to meet other families and to access specialist support at the weekend. We introduced Somewhere to Belong for fathers. 16 individuals have benefitted from the service and feedback has been positive.

SEND Siblings

Through our co-production network, families they told us they wanted an inclusive session tailored to siblings, who often miss out on opportunities because of the needs in the family.

SEND Siblings ran in October and February and has been a great success reaching 31 individuals.

Collaborative music making

Our partnership with Soundcastle has flourished. We're offering music sessions that have been fun and have proven successful in promoting children's development.

Sharing Good Practice

In recognition of our work, we were invited to the National SEND summit to deliver a workshop on our approach. Our parent volunteer Georgie co facilitated sharing information about the service and its impact.

Other Local Authorities have contacted us for support in establishing a similar service for their community.



Plans for the Future

Children are resilient

As the cost of living crisis places our families under increasing pressure, we plan to work with local families to review our services and support.

We'll consider best practice and research and ensure that our approach supports children with a positive early years experience, to build the foundation for a bright future.

Equality for all

We continue to prioritise disadvantaged children and explore ways to engage those most in need of help.

We're focusing on improving support to children who have experienced trauma, children with SEND, and developing plans to introduce a provision for deaf children in our childcare setting.

Voices are heard

We're expanding our Co-Co-East Network to collaborate with more families and local organisations. We're seeking funding to help us to support families to develop the services they want and need.

We want to explore ways of supporting families to tell their story and use their lived experience to help others.

Strive to do our best

We're expanding training opportunities for our team including introducing the new Level 5 Early Years Lead Practitioner apprenticeship working in partnership with Training Trust.

As our mission is to build brighter futures, we're re-igniting the work of our Sustainability Sub Group and exploring ways to improve our environmental sustainability and journey to net zero.



Financial Review

The Lloyd Park Children's Charity has had a challenging year due to increasing costs. At the same time we have seen increasing demand for our support services as families struggle with the cost of living crisis. At the end of the year we had a deficit of £110,416 before a pension adjustment of £382,000. Overall revenue was higher at £3.51m (2022: £3.42m).

The movements in the funds are set out in notes 22 to 23 to the financial statements. Full details of the Charity's Income & Expenditure are given in the notes to the financial statements.

Risk Assessment

The Trustees continue to review the major strategic, business and operation risks (Including Health & Safety, and Safeguarding Children) that the Charity faces. The Trustees regularly review of the strategic options for the charity in the context of the major risks facing the charity now and, in the future. The Trustees receive regular reports that monitor the financial and operational position and exposures to risk of the charity. The Trustees are satisfied that systems are in place to monitor and control all areas where there is an identifiable risk with financial, operation or reputational implications.

Working with families in the early years involves working in a high-risk environment due to children's stage of development, their individual needs or the level of risk families encounter in their lives. Additionally, our charity chooses to target vulnerable and disadvantaged children and to operate in areas of greatest need. We believe that this is how we can achieve greater public benefit.

Investment, Policy and Performance

The Lloyd Park Children's Charity has a policy of keeping its surplus funds in high interest UK deposit bank accounts. It monitors the interest rates on its deposits and the amount it needs to keep available in cash resources. The charity will review its investment policy regularly with a view to ensuring that it preserves the capital value and buying power of any reserve that it holds as well as providing a continuing income from its short-term surplus funds.

Reserves Policy

The Trustees have a policy of maintaining reserves to protect against fluctuations in income. The Trustees policy is to maintain a cash reserve in its unrestricted funds which

would enable the charity to continue its provision for children and families if its sources of income other than parental contributions were to cease or be delayed significantly in their payment. At the year-end, reserves of £601,132 (2022: £618,293) were held under designated funds for the improvements in specific areas of the charity as well as building up reserves for future committed programmes. As at 31st March 2023, the free reserves held under general funds excluding Pension reserve (i.e. available unrestricted funds excluding pension reserve) were £1,023,499 (2022: £1,007,454).

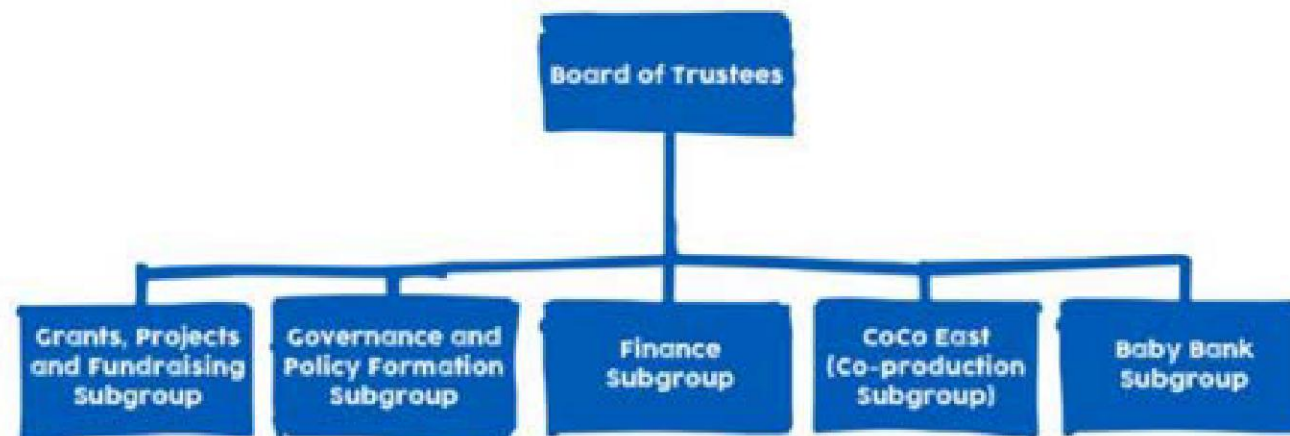
Future Plans

The year ahead will be another challenging one as the cost of living crisis represents increasing costs, more competition for funds and increased demand for support services.

Additionally, funding for the free early education entitlement continues to fall short and doesn't cover costs for delivering this service.

We're reviewing and diversifying our fundraising strategy, and looking for cost savings, as the need for our charity's services remains high.

Structure, Governance and Management



The Lloyd Park Children's Charity is a registered Charity and Company Limited by Guarantee, and is governed by our Memorandum and Articles of Association.

The Trustee Board is made up of 14 voting members, including the Chairperson, Vice Chair, Treasurer and Secretary. All members are Charity Trustees and Company Directors, who are elected to the Board by our Trustees, who seek to promote diversity of knowledge, skills, and experience.

In-line with our constitution, the Chief executive Officer is also a member of the Trustee's Board. This helps to ensure that the Charity operates within the framework of the Law and Good Practice. The Chief Executive Officer reports to the Chairperson and The Board of Trustees. Trustees identify and progress priority areas of work through Sub-Groups that are reviewed annually. The Chair of each Sub-group is a voting member of the Trustee Board.

The majority of our Trustees are current or past parents from our childcare and/ or community services, and 100% of the Board share lived experience of the families we support.

Structure, Governance and Management

Trustee Board

Adebisi Oyekanmi	Chair Person
Bethany Winning	Vice Chair
Craig Wallace	Treasurer & Chair Finance SG
Ropa Matibenga	Secretary
Leonie Try	Voting Member & Chair F/R SG
James Wragg	Voting Member & Chair Governance SG
Vivian Chan	Voting Member & Chair Baby Bank SG
Georgie Harris	Voting Member & Chair StartWell SG
Wendy Fields	Voting member and CEO
Johanna Reades	Voting Member
Kellie Smith	Voting Member
Vicky Lynch	Voting Member
Emma Bltton	Voting Member (resigned 18/05/23)
Tanja Fletcher	Voting Member
Nasra Raza	Voting Member
Laura Belloti	Voting Member (resigned 02/12/22)
Viv Barret	Voting Member (deceased 15/04/22)

Finance Sub Group

Craig Wallace	Treasurer & Chair Finance SG
Adebisi Oyekanmi	Chair of Trustee Board

Governance Sub Group

James Wragg	Voting Member & Chair Governance SG
Bethany Winning	Voting Member & Sub Group Member

Grants, Projects and Campaigns

Leonie Try	Voting Member & Chair Projects & F/R SG
------------	---

CoCo East Sub Group

Georgie Harris	Voting Member and Chair of CoCo East
Callista Frances	Sub Group Member
Carol Prideux	Sub Group Member (Parents Forum)
Daniel Bank	Sub Group Member (GILL)
Helen Crockford	Sub Group Member (Walthamstow Toy Library)
George Gaillet	Sub Group Member (Citizens Uk Waltham Forest)
Becki Josiah	Sub Group Member (Haven House)
Morag McGuire	Sub Group Member (Artillery)
Laura Kerry	Sub Group Member (Artillery)
Alexandra Martinelli-Kinmonth	Sub Group Member (Together Space)

Sustainability Sub Group

Johanna Reades	Voting Member & Chair Sustainability SG
Rob Stuart	Sub Group Member
Clair Wright	Sub Group Member (WF Cloth Nappy Library)
Alice Walker	Sub Group Member (Womens Environmental Network)

Baby Bank Sub Group

Vivian Chan	Voting Member & Chair Baby Bank SG
Vicky Lynch	Voting Member & SubGroup Member
Tanja Fletcher	Voting Member & SubGroup Member

Statement of Trustees' Responsibilities

The trustees (who are also the directors of The Lloyd Park Children's Charity for the purposes of company law) are responsible for preparing the trustees' report and the financial statements in accordance with the United Kingdom Accounting Standards (United Kingdom Generally Accepted Accounting Practice) and applicable law and regulations.

Company law requires the trustees to prepare financial statements for each financial year. Under company law the trustees must not approve the financial statements unless they are satisfied that they give a true and fair view of the state of affairs of the charitable company and of its incoming resources and application of resources, including its income and expenditure, for that period. In preparing these financial statements, the trustees are required to:

- select suitable accounting policies and apply them consistently;
- observe the methods and principles in the Charities SORP;
- make judgements and estimates that are reasonable and prudent;
- state whether applicable UK Accounting Standards have been followed, subject to any material departures disclosed and explained in the financial statements; and
- prepare the financial statements on the going concern basis unless it is inappropriate to presume that the charitable company will continue in business.

The trustees are responsible for keeping adequate accounting records that are sufficient to show and explain the charitable company's transactions and disclose with reasonable accuracy at any time the financial position of the charitable company and enable them to ensure that the financial statements comply with the Companies Act 2006.

They are also responsible for safeguarding the assets of the charitable company and hence for taking reasonable steps for the prevention and detection of fraud and other irregularities.

Approved by the trustees of the charity on

Date: 19/12/2023
and signed on its behalf by Adebisi Oyekanmi:



.....

Trustee: Adebisi Oyekanmi

Reference and Administrative Details

Charity name: The Lloyd Park Children's Charity
Charity reg no: 1102134
Company reg no: 4802332

Principal office: The Lloyd Park Centre,
Winns Avenue Entrance,
Lloyd Park,
Walthamstow,
London,
E17 5JW

Registered office: The Lloyd Park Centre,
Winns Avenue Entrance,
Lloyd Park,
Walthamstow,
London,
E17 5JW

Banks: Barclays Bank Plc,
278 Hoe Street,
Walthamstow,
London,
E17 9QE

CAF Bank,
PO Box 289,
West Malling,
Kent,
ME19 4TA.

Auditors and
Chartered
Accountants: Lambert Chapman LLP,
3 Warners Mill, Silks Way,
Braintree, Essex,
CM7 3GB.

Solicitors: Cartwright Cunningham
Haselgrove & Co
13/13a The Broadway
Woodford Green
Essex
IG8 0HL

Independent Auditor's Report to the Members of The Lloyd Park Children's Charity

Opinion

We have audited the financial statements of The Lloyd Park Children's Charity (the 'charitable company') for the year ended 31 March 2023 which comprise the Statement of Financial Activities, Balance sheet, Cash Flow Statement and notes to the financial statements, including significant accounting policies. The financial reporting framework that has been applied in their preparation is applicable law and United Kingdom Accounting Standards, including Financial Reporting Standard 102 The Financial Reporting Standard applicable in the UK and Republic of Ireland (United Kingdom Generally Accepted Accounting Practice).

In our opinion the financial statements:

- give a true and fair view of the state of the charitable company's affairs as at 31 March 2023, and of its incoming resources and application of resources, including its income and expenditure, for the year then ended;
- have been properly prepared in accordance with United Kingdom Generally Accepted Accounting Practice; and
- have been prepared in accordance with the requirements of the Companies Act 2006.

Basis for opinion

We conducted our audit in accordance with International Standards on Auditing (UK) (ISAs (UK)) and applicable law. Our responsibilities under those standards are further described in the Auditor's responsibilities for the audit of the financial statements section of our report. We are independent of the charitable company in accordance with the ethical requirements that are relevant to our audit of the financial statements in the UK, including the FRC's Ethical Standard, and we have fulfilled our other ethical responsibilities in accordance with these requirements. We believe that the audit evidence we have obtained is sufficient and appropriate to provide a basis for our opinion.

Conclusions relating to going concern

In auditing the financial statements, we have concluded that the trustees' use of the going concern basis of accounting in the preparation of the financial statements is appropriate.

Based on the work we have performed, we have not identified any material uncertainties relating to events or conditions that, individually or collectively, may cast significant doubt on the charitable company's ability to continue as a going concern for a period of at least twelve months from when the financial statements are authorised for issue.

Our responsibilities and the responsibilities of the trustees with respect to going concern are described in the relevant sections of this report.

Independent Auditor's Report to the Members of The Lloyd Park Children's Charity

Other information

The other information comprises the information included in the trustees annual report, other than the financial statements and our auditor's report thereon. The trustees are responsible for the other information contained within the annual report. Our opinion on the financial statements does not cover the other information and, except to the extent otherwise explicitly stated in our report, we do not express any form of assurance conclusion thereon. Our responsibility is to read the other information and, in doing so, consider whether the other information is materially inconsistent with the financial statements or our knowledge obtained in the course of the audit or otherwise appears to be materially misstated. If we identify such material inconsistencies or apparent material misstatements, we are required to determine whether this gives rise to a material misstatement in the financial statements themselves. If, based on the work we have performed, we conclude that there is a material misstatement of this other information, we are required to report that fact.

We have nothing to report in this regard.

Opinions on other matters prescribed by the Companies Act 2006

In our opinion, based on the work undertaken in the course of the audit:

- the information given in the trustees' report (incorporating the directors' report) for the financial year for which the financial statements are prepared is consistent with the financial statements; and
- the directors' report has been prepared in accordance with applicable legal requirements.

Matters on which we are required to report by exception

In the light of the knowledge and understanding of the charitable company and its environment obtained in the course of the audit, we have not identified material misstatements in the directors' report.

We have nothing to report in respect of the following matters in relation to which the Companies Act 2006 requires us to report to you if, in our opinion:

- adequate accounting records have not been kept, or returns adequate for our audit have not been received from branches not visited by us; or
- the financial statements are not in agreement with the accounting records and returns; or
- certain disclosures of directors' remuneration specified by law are not made; or
- we have not received all the information and explanations we require for our audit.

Independent Auditor's Report to the Members of The Lloyd Park Children's Charity

Responsibilities of trustees

As explained more fully in the trustees' responsibilities statement (set out on page 13), the trustees (who are also the directors of the charitable company for the purposes of company law) are responsible for the preparation of the financial statements and for being satisfied that they give a true and fair view, and for such internal control as the trustees determine is necessary to enable the preparation of financial statements that are free from material misstatement, whether due to fraud or error.

In preparing the financial statements, the trustees are responsible for assessing the charitable company's ability to continue as a going concern, disclosing, as applicable, matters related to going concern and using the going concern basis of accounting unless the trustees either intend to liquidate the charitable company or to cease operations, or have no realistic alternative but to do so.

Auditor's responsibilities for the audit of the financial statements

Our objectives are to obtain reasonable assurance about whether the financial statements as a whole are free from material misstatement, whether due to fraud or error, and to issue an auditor's report that includes our opinion. Reasonable assurance is a high level of assurance, but is not a guarantee that an audit conducted in accordance with ISAs (UK) will always detect a material misstatement when it exists. Misstatements can arise from fraud or error and are considered material if, individually or in the aggregate, they could reasonably be expected to influence the economic decisions of users taken on the basis of these financial statements.

Irregularities, including fraud, are instances of non-compliance with laws and regulations. We design procedures in line with our responsibilities, outlined above, to detect material misstatements in respect of irregularities, including fraud. Our approach to identifying and assessing the risks of material misstatement in respect of irregularities, including fraud and non-compliance with laws and regulations, was as follows:

- the engagement partner ensured that the engagement team collectively had the appropriate competence, capabilities and skills to identify or recognise non-compliance with applicable laws and regulations;
- we identified the laws and regulations applicable to the charity through discussions with trustees and other management;
- we focused on specific laws and regulations which we considered may have a direct material effect on the financial statements or the operations of the company, including the Companies Act 2006, Charities SORP (FRS102), taxation legislation and data protection, employment and health and safety legislation. We have also considered OFSTED as this is a principal regulator of the charity;
- we assessed the extent of compliance with the laws and regulations identified above through making enquiries of management and inspecting legal correspondence; and
- identified laws and regulations were communicated within the audit team regularly and the team remained alert to instances of non-compliance throughout the audit.

Independent Auditor's Report to the Members of The Lloyd Park Children's Charity

We assessed the susceptibility of the charity's financial statements to material misstatement, including obtaining an understanding of how fraud might occur, by:

- making enquiries of management as to where they considered there was susceptibility to fraud, their knowledge of actual, suspected and alleged fraud; and
- considering the internal controls in place to mitigate risks of fraud and non-compliance with laws and regulations.

To address the risk of fraud through management bias and override of controls, we:

- performed analytical procedures to identify any unusual or unexpected relationships;
- tested journal entries to identify unusual transactions;
- assessed whether judgements and assumptions made in determining the accounting estimates were indicative of potential bias; and
- investigated the rationale behind significant or unusual transactions.

In response to the risk of irregularities and non-compliance with laws and regulations, we designed procedures which included, but were not limited to:

- agreeing financial statement disclosures to underlying supporting documentation;
- reading the minutes of meetings of those charged with governance; and
- enquiring of management as to actual and potential litigation and claims.

There are inherent limitations in our audit procedures described above. The more removed that laws and regulations are from financial transactions, the less likely it is that we would become aware of non-compliance. Auditing standards also limit the audit procedures required to identify non-compliance with laws and regulations to enquiry of the trustees and other management and the inspection of regulatory and legal correspondence, if any.

Material misstatements that arise due to fraud can be harder to detect than those that arise from error as they may involve deliberate concealment or collusion.

A further description of our responsibilities is available on the Financial Reporting Council's website at www.frc.org.uk/auditorsresponsibilities. This description forms part of our auditor's report.

Independent Auditor's Report to the Members of The Lloyd Park Children's Charity

Use of our report

This report is made solely to the charitable company's members, as a body, in accordance with Chapter 3 of Part 16 of the Companies Act 2006. Our audit work has been undertaken so that we might state to the charitable company's members those matters we are required to state to them in an auditor's report and for no other purpose. To the fullest extent permitted by law, we do not accept or assume responsibility to anyone other than the charitable company and the charitable company's members as a body, for our audit work, for this report, or for the opinions we have formed.

Signed: Lambert Chapman LLP

Date: 20.12.2023

Sean Wiegand FCA (Senior Statutory Auditor)
For and on behalf of Lambert Chapman LLP, Statutory Auditor
3 Warners Mill
Silks Way
Braintree
Essex
CM7 3GB

The Lloyd Park Children's Charity (Registration number 4802332)
Statement of Financial Activities for the Year Ended 31st March 2023

Notes

		Unrestricted Funds 2023	Restricted Funds 2023	Total Funds 2023	Prior Period Total Funds
	Income and endowments from:	£	£	£	£
2	Donations and legacies	23,922	10,083	34,005	2,535
3	Charitable activities	2,943,550	327,467	3,271,017	3,307,099
4	Investments	8,320	-	8,320	248
5	Other Income	188,423	3,882	192,305	112,788
	Total	3,164,215	341,432	3,505,647	3,422,670
	Expenditure on:				
6	Raising funds: Donations, legacies and fundraising	1,666	-	1,666	1,049
7	Charitable activities	3,145,533	388,986	3,534,519	3,268,808
10	Other Expenditure	26,014	53,864	79,878	125,126
	Total	3,173,213	442,850	3,616,063	3,394,983
	Net income/(expenditure)	(8,998)	(101,418)	(110,416)	27,687
	Transfers between funds	(7,118)	7,118	-	-
	Other recognised gains/losses:				
20	Actuarial gains/ (losses) on defined benefit pension schemes *	382,000	-	382,000	17,000
	Net movement in Funds	365,884	(94,300)	271,584	44,687
	Reconciliation of funds:				
	Total funds brought forward	1,230,747	440,239	1,670,986	1,626,299
	Total funds carried forward	1,596,631	345,939	1,942,570	1,670,986

Note 20 provides additional disclosure regarding the defined benefit pension scheme.

The Charity has entered into a deed of guarantee with the London Borough of Waltham Forest regarding the defined benefit pension scheme to limit the potential exposure of a pension shortfall to £39,000.

All incoming resources and expenditure derive from continuing activities. The charity has no recognised gains or losses for the year other than the results above.

The notes on pages 22 to 37 form an integral part of the financial statements.

The Lloyd Park Children's Charity (Registration number 4802332)
Balance Sheet as at 31st March 2023


		2023		2022
	£	£	£	£
Fixed assets				
14 Tangible assets	623,221		681,317	
Total fixed assets		623,221		681,317
Current assets				
15 Debtors	493,645		208,749	
26 Cash and cash equivalents	1,311,700		1,678,184	
Total current assets	1,805,345		1,886,933	
Liabilities				
16 Creditors Amounts falling due within one year	424,734		468,802	
17 Provision for liabilities	33,462		33,462	
Net current assets excluding pension liability		1,347,149		1,384,669
Defined benefit pension scheme liability		28,000		395,000
Total net assets		1,942,570		1,670,986
The funds of the charity:				
23 Restricted funds in surplus		345,939		440,239
Unrestricted funds				
22 Unrestricted income funds		1,624,631		1,625,747
22 Pension reserve		(28,000)		(395,000)
Total charity funds		1,942,570		1,670,986

These financial statements have been prepared in accordance with the special provisions of Part 15 of the Companies Act 2006 relating to small companies.

Approved by the Board on:

and signed on its behalf by:

Adebisi Oyekanmi
Trustee

 12/12/2023

The notes on pages 22 to 37 form an integral part of the financial statements.

The Lloyd Park Children's Charity (Registration number 4802332)

Notes to the Financial Statement 31st March 2023

1 Accounting Policies

Basis of preparing a Financial Statements

The financial statements of the charitable company have been prepared in accordance with the Charity SORP (FRS102) 'Accounting and reporting by charities: Statement of Recommended Practice applicable to charities preparing their accounts in accordance with The Financial Reporting Standard applicable in the UK and Republic of Ireland (FRS102) (Effective 1st January 2019)'. Financial Reporting Standard 102 have been prepared under the historical cost convention. The charity meets the definition of a public benefit entity under FRS102.

Going Concern Basis

The Trustees consider that the going concern basis is appropriate as they consider the reserves level to be sufficient to ensure that the charity can meet its financial obligations for the next 12-18 months and on that basis the charity is a going concern.

Judgements

Apart from those judgements involving estimates, management has not made any judgements in the process of applying the entity's accounting policies that have a effect on the amounts recognised in the accounts.

Key Assumptions

There are no key assumptions concerning the future of other key sources of estimation uncertainty at the reporting date that have a significant risk of causing a material adjustment to the carrying amounts of assets and liabilities within the next reporting period.

Funding Accounting Policy

Unrestricted Funds

These are funds that can be used in accordance with the charitable objectives of the charity at the discretion of the Trustees.

Restricted Funds

These are funds that can only be used for particular restricted purposes within the objectives of the charity. Restrictions arise when specified by the donor or when the funds are raised for a particular restricted purpose.

Designated Funds

These are funds set aside by the Trustees out of unrestricted general funds for specific future purposes or projects. Further details of each fund are disclosed in the notes.

Incoming Resources

Donations (including those raised through fundraising) are recognised when income has been received. Gift Aid income on donations is accrued when there is a valid declaration from the donor.

Legacy income is recognised in the statement of financial activities when the Lloyd Park Children's Charity has entitlement to the income, receipt is probable and the income can be reliably measured.

Grant income included in this category provides funding to support programme activities and is recognised where there is entitlement, probability of receipt and the amount can be measured with sufficient reliability.

Income from charitable activities includes income recognised as earned (as the related goods or services are provided) under contract or where entitlement to grant funding is subject to specific performance conditions.

Investment income is recognised on a receivable basis.

Income derived from events is recognised as earned (that is, as the related goods or services are provided).

Income derived from events is recognised as earned (that is, as the related goods or services are provided).

Resources Expended

Expenditure is accounted for on an accrual basis and has been classified under headings that aggregate all costs related to the category. The irrecoverable element of VAT is included with the expense item to which it relates.

Costs of generating funds are the costs of trading for fundraising purposes.

Fixed Assets

Individual fixed assets are capitalised if they cost £1500 or more and these are initially recorded at cost.

Depreciation

Depreciation is provided on tangible fixed assets so as to write off the cost or valuation, less any estimated residual value, over their expected useful economic life as follows:

Freehold Land and Buildings	4% straight line basis
Leasehold Improvements	over the term of the lease
Plant and equipment	25% reducing balance basis

The Lloyd Park Children's Charity (Registration number 4802332)

Notes to the Financial Statement 31st March 2023

Cash and Cash Equivalents

Cash and cash equivalents includes cash and bank balances including amounts held on short-term deposit.

Debtors

Debtors are recognised at the settlement amount due after any discount offered and provision for bad and doubtful debts. Prepayments are valued at the amount prepaid net of any discounts due.

Creditors and provisions

Creditors and provisions are recognised where the Charity has a present obligation resulting from a past event that will probably result in a transfer of funds to a third party and the amount due to settle the obligation can be measured or estimated reliably. Creditors and provisions are normally recognised at their settlement amount after allowing for any discounts due.

Operating Lease

Rental payable under operating lease are charged in the Statement of Financial Activities on a straight line basis over the lease term.

Pensions

The charity operates a defined contribution plan and a defined benefit plan.

A defined contribution plan is a post-employment benefit plan under which the company pays fixed contributions into a separate entity and will have no legal or constructive obligation to pay further amounts. Obligations for contributions to defined contribution pension plans are recognised as an expense in the income and expenditure account in the periods during which services are rendered by employees.

A defined benefit plan is a post-employment benefit plan other than a projected unit credit method. The entity recognises net defined benefit plan assets to the extent that it is able to recover the surplus either through reduced contributions defined contribution plan. A valuation is performed by a qualified actuary using the projected unit credit method. The entity recognises net benefit plan assets to the extent that it is able to recover the surplus either through reduced contributions in the future or through refunds from the plan.

Changes in the net defined benefit liability arising from employee service rendered during the period, net interest on net defined benefit liability, the cost of plan introductions, benefit changes, curtailments and settlements during the period are recognised in the income and expenditure account. Remeasurement of the net defined benefit liability/asset is recognised in other comprehensive income in the period in which it occurs.



The Lloyd Park Children's Charity (Registration number 4802332)
Notes to the Financial Statement 31st March 2023

	Unrestricted Funds 2023 £	Restricted Funds 2023 £	Total Funds 2023 £	Prior Period Total Funds £
2 Donations and legacies				
Donations by others	23,922	-	23,922	1,945
Donations to Child Poverty project including Baby Bank	-	10,083	10,083	590
Total	23,922	10,083	34,005	2,535
3 Charitable Activities income				
Milk Grant and other grants	1,679	327,467	329,146	296,530
2 Year FEEE income	83,675	-	83,675	97,332
3 Year FEEE income	462,959	-	462,959	482,633
Training Rooms & Refreshment income	10,360	-	10,360	2,765
Children & Family Centres contract	1,071,000	-	1,071,000	1,071,000
Children & Family Centres other income	15,157	-	15,157	31,860
Fundraising income	11,922	-	11,922	1,079
Child care income	1,286,798	-	1,286,798	1,323,900
Total Charitable income	2,943,550	327,467	3,271,017	3,307,099

The Lloyd Park Children's Charity (Registration number 4802332)
Notes to the Financial Statement 31st March 2023

	Unrestricted Funds 2023	Restricted Funds 2023	Total Funds 2023	Prior Period Total Funds
	£	£	£	£
4 Investment income				
Deposit account interest	8,320	-	8,320	248
5 Other income				
Furlough Grant	-	-	-	14,325
Support for SEN children	170,611		170,611	90,392
Grow Wild income	4,088		4,088	-
Other income	13,724	3,882	17,606	8,071
Total other income	188,423	3,882	192,305	112,788

The Lloyd Park Children's Charity (Registration number 4802332)
Notes to the Financial Statement 31st March 2023

	Unrestricted Funds 2023	Restricted Funds 2023	Total Funds 2023	Prior Period Total Funds
	£	£	£	£
6 Expenditure on raising funds				
Grow Wild Expenses	1,067	-	1,067	603
Other fundraising expenses	599	-	599	446
Total fundraising expenditure	1,666	-	1,666	1,049
7 Expenditure on charitable activities				
Wages and salaries including agency staff costs	2,397,610	123,432	2,521,042	2,311,847
Social security costs	203,940	11,905	215,845	177,356
Employers pension costs	133,225	5,086	138,311	147,776
Other employee benefits	44,861	864	45,725	48,820
Other staff costs	(74,789)	74,789	-	27,060
Rent	21,789	-	21,789	19,314
Rates	16,137	-	16,137	4,590
Service charges	18,473	-	18,473	15,000
Other premises costs	57,957	11,729	69,686	181,508
Supplies and services	147,988	119,690	267,678	180,201
Central support costs	175,021	27,805	202,826	139,889
Governance costs (see note 9)	3,321	13,686	17,007	15,447
Total expenditure on charitable activities	3,145,533	388,984	3,534,519	3,268,808
8 Number of trustees whose expenses were reimbursed in the year	-	-	-	-

The Lloyd Park Children's Charity (Registration number 4802332)

Notes to the Financial Statement 31st March 2023

	Unrestricted Funds 2023	Restricted Funds 2023	Total Funds 2023	Prior Period Total Funds
	£	£	£	£
9 Analysis of governance costs				
Legal costs	5,802	-	5,802	744
Audit & Accountancy fees	7,900	-	7,900	9,594
Trustee and committee meeting costs	11	-	11	75
Accounts filing costs	13	-	13	13
Bank charges	758	-	758	1,281
Subscriptions	2,446	-	2,446	3,740
Restricted grant contribution to governance costs	(13,609)	13,686	77	-
Total	3,231	13,686	17,007	15,447
10 Other expenses				
Depreciation - land & buildings	-	53,864	53,864	53,864
Depreciation - outdoor play area	18,188	-	18,188	18,188
Depreciation - Leasehold Improvements	-	-	-	49,900
Depreciation - plant & machinery	7,826	-	7,826	3,174
Total other expenses	26,014	53,864	79,878	125,126

11 Trustee's remuneration and expenses

Wendy Fields, a trustee, received remuneration in her role as an employee during the year ended 31/03/23 as stated below.

	2023	2022
	£	£
Salary	75,390	55,588
Pension	7,539	5,438
Private health cover (Benenden)	143	108

12 Net (expenditure)/Income

Net (expenditure)/income is stated after charging:

Hire of other assets - operating leases	21,789	19,314
The audit of the charity's accounts	7,900	9,594
Depreciation of owned assets	79,878	125,126

The Lloyd Park Children's Charity (Registration number 4802332)
Notes to the Financial Statement 31st March 2023

13 Taxation

The company is a registered charity and is, therefore, exempted from taxation

14 Tangible fixed assets

	Unrestricted				Restricted				Total			
	Freehold Land and Buildings	Leasehold Improvements	Plant and machinery	Total	Freehold Land and Buildings	Leasehold Improvements	Plant and machinery	Total	Freehold Land and Buildings	Leasehold Improvements	Plant and machinery	Total
	£	£	£	£	£	£	£	£	£	£	£	£
Cost												
As at 1 April 2022	454,710	120,593	165,910	741,213	1,346,589	-	-	1,346,589	1,801,299	120,593	165,910	2,087,802
Additions			21,782	21,782	-	-	-	-	-	-	21,782	21,782
As at 31 March 2023	454,710	120,593	187,692	762,995	1,346,589	-	-	1,346,589	1,801,299	120,593	187,692	2,109,584
Depreciation												
As at 1 April 2022	145,959	120,593	156,388	422,940	983,545	-	-	983,545	1,129,504	120,593	156,388	1,406,485
Charge for the year	18,188		7,826	26,014	53,864			53,864	72,052	-	7,826	79,878
As at 31 March 2023	164,147	120,593	164,214	448,954	1,037,409	-	-	1,037,409	1,201,556	120,593	164,214	1,486,363
Net book value												
As at 1 April 2022	308,751	-	9,522	318,273	363,044	-	-	363,044	671,795	-	9,522	681,317
As at 31 March 2023	290,563	-	23,478	314,041	309,180	-	-	309,180	599,743	-	23,478	623,221

15 Debtors

	2023	2022
	£	£
Trade debtors	322,695	143,760
Prepayments and accrued income	119,325	21,429
Other debtors	51,825	43,560
	<u>493,845</u>	<u>208,749</u>

16

Creditors: Amounts falling due within one year

	2023	2022
	£	£
Trade creditors	17,374	69,764
Payments received on a/c	171,942	237,366
Accruals and deferred income	126,161	133,826
Taxation and social security	52,706	-
Other creditors	56,551	27,846
	<u>424,734</u>	<u>468,802</u>

The Lloyd Park Children's Charity (Registration number 4802332)
Notes to the Financial Statement 31st March 2023

	2023	2022
	£	£
17 Provision for liabilities		
Furlough grant provision	33,462	33,462

18 Members' liability

The charity is a private company limited by guarantee and consequently does not have share capital. Each of the members is liable to contribute an amount not exceeding £1 towards the assets of the charity in the event of liquidation.

19 Operating lease commitments

Total future minimum lease payments under non-cancellable operating lease are as follows:

	2023	2022
	£	£
Within one year	6,425	6,425
1- 2 years	6,425	6,425
2- 5 years	19,275	19,275
over 5 years	6,425	12,850
	<u>38,550</u>	<u>44,975</u>

The Lloyd Park Children's Charity (Registration number 4802332)

Notes to the Financial Statement 31st March 2023

20

Pension schemes

During the year, The Lloyd Park Children's Charity operated two pension schemes one defined contribution scheme and one defined benefit scheme.

Defined benefit pension scheme

During 2016, the Charity was successful in its tender and it was awarded the contract to run the Children and Family Centre Services across the borough of Waltham Forest. As part of the contract, a number of staff members were transferred from the Council to the Charity in July 2016 under the Transfer of Undertakings (Protection of Employment) Regulations (TUPE).

A number of staff members had existing defined benefit pension schemes and, as a result, the Charity has the obligation to provide the agreed benefit to these employees.

The pension scheme for these employees is covered by the London Borough of Waltham Forest Pension Fund.

Upon being awarded the contract, 21 employees were transferred to the charity. From 8th April 2022 only 1 of the TUPE staff remains with the charity.

The Charity has been paying contributions of 17.4% for the year ended 31 March 2023 in line with an Admission Agreement with the London Borough of Waltham Forest. The contribution rate will remain at 17.4% as per an agreement with the London Borough of Waltham Forest. The Charity has also entered into a deed of guarantee with the London Borough of Waltham Forest regarding the defined benefit pension scheme to limit the potential exposure of a pension shortfall to £39,000. This has been paid and included within other debtors in note 15.

The most recent actuarial valuation for Lloyd Park Children's Charity took place on 31st March 2023.

As required by FRS 102 the defined benefit liabilities have been measured using the projected unit method. The tables state the FRS 102 actuarial assumptions upon which the valuation of the scheme was based.

Principal financial assumptions at the balance sheet date	2023 Accounts %	2022 Accounts %
CPI inflation/CARE benefits revaluation	2.70	3.20
Increase in salaries	4.20	4.70
Pension increases		
Increase in pensions on payment/deferment	2.80	3.30
Discount Rate	4.80	2.80

* An adjustment has been made for short term pay restraint in line with the latest actuarial valuation

Principal demographic assumptions at the balance sheet date	At 31.03.2023	At 31.03.2022
Assumed life expectancies on retirement age 65		
Current pensioner age 65 retiring today- Males	86.80	87.60
Current pensioner age 65 retiring today- Females	89.10	90.10
Future pensioner age 65 in 20 years- Males	88.10	89.10
Future pensioner age 65 in 20 years- Females	90.70	92.00

The Lloyd Park Children's Charity (Registration number 4802332)
Notes to the Financial Statement 31st March 2023

20.Cont	Major categories of plan assets	2023 Accounts £'000	%	2022 Accounts £'000	%
	Equities	345	64	441	72
	Other bonds	80	15	60	10
	Property	58	11	60	10
	Cash/liquidity	31	6	7	1
	Other	29	5	42	7
	Total	534	100.00	610	100

None of the schemes assets are invested in any property or other assets currently used by the charity

	2023 Accounts £'000	2022 Accounts £'000
Reconciliation of funded status to balance sheet		
Fair Value of plan assets	534	610
Total present value of benefit obligations	(571)	(1,005)
Funded status	(28)	(395)
Liability recognised on the balance sheet	(28)	(395)

	2023 Accounts £'000	2022 Accounts £'000
Amounts recognised in the income statement		
Operating Cost		
Current service cost	7	19
Net interest cost	11	8
Administration costs	-	-
Past Service cost (Gain)	-	-
Total	18	27

	2023 Accounts £'000	2022 Accounts £'000
Amounts recognised in Other recognised gains/losses		
Gain/(Loss) on Remeasurement	382	17

Defined contribution pension scheme

The charity operates a defined contribution scheme for all other employees.

The pension cost charge for the period represents contributions payable by the charity to the scheme and amounted to £120,437 (2022: £120,910).

Contributions totalling £19,354 (2022: £18,622) were payable at the end of the period and are included in creditors.

The Lloyd Park Children's Charity (Registration number 4802332)
Notes to the Financial Statement 31st March 2023

21 Related parties

The Charity is not controlled by any one person.

Related party transactions

During the year the following Trustees had children at the day care centre with aggregate fees amounting to £32,153. At the balance sheet date £662 was owed to trustees in respect of childcare fees.

Adebisi Oyekanmi, Vicky Lynch, Tanja Fletcher, Vivian Chan and Johanna Reades.

In the previous year, the fees charged to Trustees amounted to £88,281 in aggregate for the following trustees:

Adebisi Oyekanmi, Max Jervis-Read, Jessica Doherty, Kellie Smith, Claire Kearney, Vivian Chan, Johanna Reades, Charleen French, Benjamin Johnson and Sarah Proudfoot.

The fees were charged in accordance with the Child Care fee structure that is applicable to all parents.

Payments to related parties for services rendered, other than trustees in the amount of £4,887 (2022: £19,615) occurred during the year.

The Lloyd Park Children's Charity (Registration number 4802332)
Notes to the Financial Statement 31st March 2023

Reconciliation of funds						
	Fund balances brought forward	Income	Expenditure	Other gains/(losses)	Transfers	Fund balances carried forward
	£	£	£		£	£
Unrestricted Funds						
Designated Funds						
Outdoor Play Area	207,244	-	17,161	-	-	190,083
Potential end of contract expenses	100,000	-	-	-	-	100,000
Roofing Reserve	87,549	-	-	-	-	87,549
Wall Cladding Reserve	73,500	-	-	-	-	73,500
Building Maintenance Reserve	150,000	-	-	-	-	150,000
Fund Raising Reserve	-	-	-	-	-	-
Children & Family Centres	-	1,078,763	1,062,148	-	(16,615)	-
Total Designated Funds	618,293	1,078,763	1,079,309	-	(16,615)	601,132
Unrestricted funds- excluding pension						
The Lloyd Park Centre & Other Charitable activities	754,078	927,130	917,954	-	6,869	770,123
The Higham Hill Centre	253,376	980,668	900,104	-	(80,564)	253,376
The Valley Centre	-	177,654	260,846	-	83,192	-
	1,007,454	2,085,452	2,078,904	-	9,497	1,023,499
Total Unrestricted Funds excluding defined pension	1,625,747	3,164,215	3,158,213		(7,118)	1,624,631
Unrestricted funds- defined pension	(395,000)	-	15,000	382,000	-	(28,000)
22 Total Unrestricted Funds	1,230,747	3,164,215	3,173,213	382,000	(7,118)	1,596,631
23 Restricted Funds						
General Restricted Fund - Other	69,411	264,870	325,402	-	4,773	13,652
Child Poverty Project including Baby Bank	2,051	38,815	23,492	-	-	17,374
General Restricted Fund - Peabody	5,733	37,747	40,092	-	2,345	5,733
Building and Outdoor Play Reserve	363,044	-	53,864	-	-	309,180
Total Restricted Funds	440,239	341,432	442,850	-	7,118	345,939
Total Funds	1,670,986	3,505,647	3,616,063	382,000	-	1,942,570

The Lloyd Park Children's Charity (Registration number 4802332)
Notes to the Financial Statement 31st March 2023

24 Statement of cash flows

	Total Funds	Prior year funds
	2023	2022
	£	£
Cash flows from operating activities:		
Net cash provided by (used in) operating activities (Note 25)	(344,702)	99,499
Cash flows from investing activities:		
Dividends, interest and rents from investments		
Proceeds from the sale of property, plant and equipment		
Purchase of property, plant and equipment	(21,782)	(2,578)
Proceeds from the sale of investments		
Purchase of investments		
Net cash provided by (used in) investing activities	(21,782)	(2,578)
Cash flows from financing activities:		
Repayments of borrowing	-	-
Cash inflows from new borrowing	-	-
Receipt of endowment		
Net cash provided by (used in) financing activities	-	-
 Change in cash and cash equivalents in the reporting period	 (366,484)	 96,921
 Cash and cash equivalents at the beginning of the reporting period	 1,678,184	 1,581,263
 Cash and cash equivalents at the end of the reporting period (Note 26)	 1,311,700	 1,678,184

The Lloyd Park Children's Charity (Registration number 4802332)
Notes to the Financial Statement 31st March 2023

25 Reconciliation of net income/ (expenditure) to net cash flow from operating activities

	Current Year 2023	Prior Year 2022
	£	£
Net income/(expenditure) for the year (as per the statement of financial activities)	271,584	44,687
Adjustments for :		
Depreciation charges	79,878	125,126
(Gains)/losses on investments		
Dividends, interest and rents from investments		
Loss/(profit) on sale of fixed assets		
Difference between pension charge and cash contribution	15,000	19,000
Other recognised (Gains)/losses	382,000	(17,000)
(Increase)/decrease in debtors	(285,096)	(29,059)
Increase/(decrease) in creditors	(44,048)	(76,717)
Increase/(decrease) in provisions	-	33,462
Net cash provided by (used in) operating activities	(344,702)	99,499

26 Analysis of cash and cash equivalents

	2023	2022
	£	£
Cash in hand and at bank	105,085	107,861
Notice deposits (less than 3 months)	1,206,615	1,570,323
Total cash and cash equivalents	1,311,700	1,678,184

The Lloyd Park Children's Charity (Registration number 4802332)

Notes to the Financial Statement 31st March 2023

27 Purpose of designated funds

Outdoor Play Area :	These funds are held for the completion of the outdoor play area and Grow Wild Project
Potential end of contract expenses :	These are funds held to cover potential end of contract expenses of the Children and Family services contract if the service is not renewed in 2025.
Roofing & Wall Cladding Reserve :	These funds are for the specific purpose of building up a reserve in order to ensure the charity has sufficient funds to repair the roof and wall cladding and is based on expected future costs.
Building Maintenance reserve :	These funds are for the maintenance of our building at the Lloyd Park in Walthamstow, London.
Fund Raising Reserve :	These funds are from fundraising activities and are used for specific purposes from time to time as agreed by the Committee.
Children & Family Centres :	These are funds in respect of our Children & Family Centres contract.

Purpose of restricted funds

General Restricted Fund :	These are funds donated by third parties for a specific purpose . The breakdown of donations in the year is as follows:
---------------------------	--

Donor	Amount £	Purpose
London Borough of Waltham Forest	34,500.00	Wellbeing Project
London Borough of Waltham Forest	42,500.00	Starting Well Project
London Borough of Waltham Forest	54,000.00	Household Support Fund
London Borough of Waltham Forest	2,600.00	Level 5 Apprenticeships
London Borough of Waltham Forest	13,379.06	Crowdfunder
London Borough of Waltham Forest	5,500.00	Winter Warmer - Lloyd Park
London Borough of Waltham Forest	5,500.00	Winter Warmer - Higham Hill
London Borough of Waltham Forest	5,000.00	Community Living Room
London Borough of Waltham Forest	5,000.00	Community Kitchen
London Borough of Waltham Forest	26,250.00	Household Support Fund -3
London Borough of Waltham Forest	10,241.00	Parent & Carer Project
London Borough of Waltham Forest	59,000.00	Perinatal Mental Health
London Borough of Waltham Forest	1,400.00	Somewhere to Belong
Peabody Project	20,547.00	Ready for School project
Peabody Project	17,200.00	Reading from the start project
Child Poverty Project including baby bank		
Justham Trust	10,000.00	Baby Bank
Tesco bucket collection for Baby Bank - 05/22	83.14	Baby Bank
Voucher Express Corporate	3,685.50	Baby Bank
Public (Through sales of donated clothes)	196.55	Baby Bank
BBC	24,850.00	To buy resources and run play sessions weekly
Total	341,432.25	

Building and Outdoor Play Reserve:	This relates to specific monies received to build the Lloyd Park Centre.
------------------------------------	--

The Lloyd Park Children's Charity (Registration number 4802332)
Notes to the Financial Statement 31st March 2023

28 Net Assets by fund

	Unrestricted Funds	Restricted Funds	Total Funds 2023	Total Funds 2021/22
	£	£	£	£
Tangible assets	314,041	309,180	623,221	681,317
Current assets	1,768,786	36,759	1,805,545	1,886,933
Creditors: Amounts falling due within one year	(424,734)	-	(424,734)	(468,802)
Provisions	(33,462)	-	(33,462)	(33,462)
Defined benefit pension scheme liability	(28,000)	-	(28,000)	(395,000)
Net assets	1,596,631	345,939	1,942,570	1,670,986

Employee benefits and Staff on books

	31/3/2023	31/3/2022
	£	£
29 Remuneration of key employees - benefits excluding employer pension costs	877,426	749,972

One staff member is paid over £60,000 a year.

30 Average number of staff employed during the year

	31/3/2023				31/3/2022			
	Full-time Staff	Part-time Staff	Full time equivalent of p/t staff	Total Full-time staff (incl. part-timers)	Full-time Staff	Part-time Staff	Full time equivalent of p/t staff	Total Full-time staff (incl. part-timers)
Lloyd Park Centre	30.2	18.5	6.8	37.0	29.8	19.0	7.8	37.6
Higham Hill	15.4	15.6	9.7	25.1	20.7	12.8	8.5	29.2
Childrens Centre/CAFC	17.6	10.1	7.3	24.9	19.0	8.1	4.9	23.9
Valley Centre	5.1	0.8	0.5	5.6	7.2	1.5	0.9	8.1
Total	68.3	45.0	24.3	92.6	76.7	41.4	22.1	98.8