



# Whitby Lobster Hatchery

[North Sea Conservation]  
1193944

End of Year Report  
Year 2

02/04/2022 - 01/04/2023





# WHITBY LOBSTER HATCHERY

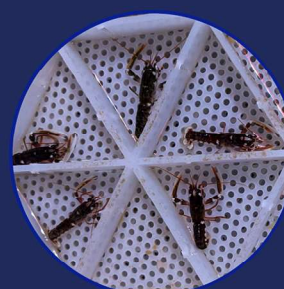
## YEAR TWO REPORT



## INTRODUCTION

### CHARITABLE OBJECTS

THE ADVANCEMENT OF EDUCATION FOR THE PUBLIC BENEFIT IN: (A) THE CONSERVATION, PROTECTION AND IMPROVEMENT OF THE MARINE ENVIRONMENT OF THE NORTH EAST COAST BY: - THE OPERATION OF A PUBLIC MARINE SPECIES EDUCATION FACILITY IN WHITBY; - PROMOTING AND SUPPORTING RESEARCH INTO THE MARINE ENVIRONMENT, INCLUDING FISHERIES SCIENCE AND FISHERIES STOCKS, AND THE EUROPEAN AND OTHER VARIETIES OF LOBSTER. (B) THE MARINE AND FISHERIES HERITAGE OF WHITBY.



CONSERVATION - We aim to release 100,000 juvenile lobsters to protect and conserve the marine ecological balance.

EDUCATION - We alongside the Discovery Centre Whitby we aim to provide fun, interactive and educational workshops for all.

RESEARCH - Our facility is well suited to provide excellent opportunities for world class research.

# CONSERVE EDUCATE RESEARCH

[www.whitbylobsterhatchery.co.uk](http://www.whitbylobsterhatchery.co.uk)

Get in touch

[yorkshirelobsterhatchery@gmail.com](mailto:yorkshirelobsterhatchery@gmail.com)

registered charity: 1193944





# WHITBY LOBSTER HATCHERY

## YEAR TWO REPORT



### CONTENTS

|   |               |
|---|---------------|
| A word from our Manager Joe Redfern           | Page 4        |
| Trustees Annual Report                        | Pages 5 - 14  |
| Independent examiner's report on the accounts | Pages 15 - 16 |
| Balance Sheet                                 | Page 17       |
| Fixed Asset Reconciliation                    | Page 18       |
| Profit & Loss                                 | Pages 19 - 20 |





This year has marked significant progress for the Whitby Lobster Hatchery, with notable achievements and strides toward realising our ambitions. Throughout the summer months, we were thrilled to host numerous interested and enthusiastic visitors. Despite our facility not being fully completed, we managed to provide insight into the charity's work, articulate our future aspirations, and educate visitors about the current fishing activity along the Yorkshire coast. This period allowed us to garner supporters, social media followers, and even inspire prospective marine biologists, emphasising the importance of education to both me and our charity. I am sincerely proud of what we have accomplished so far.



In the aftermath of the mass mortalities in the North East, which began in October 2021, the fishing industry faced deep concerns for its future. Landings sharply declined as thousands of crabs and lobsters washed up along the beaches. Playing a central role in the campaign to understand the incident and prevent its recurrence, I engaged in efforts to address the aftermath. Today, the ecosystems along the coast remain disrupted, impacting our coastal communities. During this reporting period, I joined local fisherman Stan Rennie in presenting evidence to a select committee in the Houses of Parliament. The charity's perspective is that a sharp, short, and destructive pollution event caused the mass mortalities, and we continue to collaborate with regional universities to investigate the ongoing disaster.



In more positive developments during this reporting period, we successfully released our first juvenile lobsters into the North Sea. This marks the first lobster raised by our charity, with hopes of many more to follow in the future. While we acknowledge that our efforts won't resolve all the biodiversity issues facing our coastline, we believe they bring hope to our coastal communities by reinforcing and, in some cases, reestablishing lobster populations. Additionally, our focus on vital educational activities contributes to developing our knowledge base.

With the completion of the installation of hatchery equipment, we are now a significant step closer to realising our ambitions. The state-of-the-art system provides an excellent facility for research, education, and the crucial release of juvenile lobsters into the wild. Many thanks to Ocean On Land Technology, JD Roaches, Ian Hazard, Whitby's fishermen, ATE services, and everyone else who contributed to the successful installation. The impact of this achievement is already evident and will continue to be in the years to come.

Finally, I would like to express immense gratitude to all our supporters, followers, lobster enthusiasts, funders, volunteers, trustees, fishermen, 'Buy One Release One' members, and everyone else who contributed to our growth and development. The 2022-2023 period has been an extraordinary year for our charity's development, but we are well aware that even more impactful years lie ahead.

**Joe Redfern**  
Manager

**Whitby Lobster Hatchery**

Pier Road, Whitby, North Yorkshire,  
YO21 3PU, United Kingdom

[yorkshirelobsterhatchery@gmail.com](mailto:yorkshirelobsterhatchery@gmail.com)  
[whitbylobsterhatchery.co.uk](http://whitbylobsterhatchery.co.uk)



## Trustees' Annual Report for the period

From 01/04/2022 Period start date To 31/03/2023 Period end date

Charity name: North Sea Conservation [Whitby Lobster Hatchery]

Charity registration number: 1193944

## Objectives and Activities

|  | SORP reference     |   |
|--|--------------------|---|
| Summary of the purposes of the charity as set out in its governing document  | Para 1.17          | <b>The advancement of education for the public benefit in: (a) the conservation, protection and improvement of the marine environment of the north east coast by: - the operation of a public marine species education facility in Whitby; - promoting and supporting research into the marine environment, including fisheries science and fisheries stocks, and the European and other varieties of lobster. (b) the marine and fisheries heritage of Whitby.</b>   |
| Summary of the main activities in relation to those purposes for the public benefit, in particular, the activities, projects or services identified in the accounts. | Para 1.17 and 1.19 | <b>Conservation</b> <ul style="list-style-type: none"><li>- Throughout 2022-2023 the charity continued to progress with the development of the lobster hatchery</li><li>- From April 2022 until August 2022 the hatchery was operated via a simple unsophisticated set up, however the concept allowed the charity to learn about the process and also teach our staff, volunteers and indeed the public about lobster and their importance to our coastal community</li><li>- After all the design work and relevant planning permissions were granted in August 2022 the temporary hatchery system was removed to make way for the more sophisticated and permanent option. Building work started in August 2022 including initial capital works, plumbing and other contractors.</li></ul> <b>Education</b> <ul style="list-style-type: none"><li>- Education is a vital part of our charities work. Over the 2022-23 period we were able to engage with various events, shows and talks</li></ul> |

|  |           |   |
|--|-----------|---|
|  |           | <p>connecting with over 1000 people in our area.</p> <ul style="list-style-type: none"> <li>- Additionally, over the summer months of 2022 we hosted many hundreds of people at the hatchery. We were able to provide talks, information and give people chance to get up close with lobsters and other marine life. In groups of up to 40 people including children attended talks at our facility learning about the marine environment, fisheries science, marine biology and our maritime history in Whitby.</li> </ul> <p><b>Research</b></p> <ul style="list-style-type: none"> <li>- Before we have our hatchery fully installed it is difficult to make solid inroads into the research aspect of our charities work. Nevertheless we have made some progress by generating contacts with regional universities with the scope to deliver research in partnership in the future.</li> <li>- In collaboration with The University of Teesside we hosted a placement student who spent 3 months full time working at the hatchery. The intern was able to contribute to various elements of the charity and gained valuable insight and knowledge to help their studies and future career.</li> <li>- Additionally, we hosted two marine biology undergrads for a 2 week placement in 2023. The students gained insights and information on our maritime heritage, fisheries and marine biology.</li> </ul> |
| Statement confirming whether the trustees have had regard to the guidance issued by the Charity Commission on public benefit | Para 1.18 | <p><b>All trustees have regard to the public benefit guidance as issued by the charity commission. The trustee board are actively seeking trustee training to strengthen understanding and application of the guidance.</b></p>   |

**Additional information (optional)**

You may choose to include further statements where relevant about:

|  | SORP reference |   |
|--|----------------|---|
| Policy on grant making   | Para 1.38      | <b>N/a</b>  |
| Policy on social investment including program related investment | Para 1.38      | <b>N/a</b>  |
| Contribution made by volunteers                                  | Para 1.38      | The charity was fortunate enough to attract multiple volunteers between 2022-23. Roughly 12 volunteers contributed to the charities aims and objective conducting various tasks including hatchery operation, maintenance, social media, public outreach. |
| Other  |                | <b>N/a</b>  |

## Achievements and Performance

|   | SORP reference |  |
|---|----------------|--|
| Summary of the main achievements of the charity, identifying the difference the charity's work has made to the circumstances of its beneficiaries and any wider benefits to society as a whole. | Para 1.20      | <p><b>Connected with roughly 5000 people, providing information, education and inspiration to people from across the region.</b></p> <p><b>Made significant progress on the development of the lobster hatchery facility, ready for 2023-24 season.</b></p> <p><b>Released our first ever juvenile lobsters from the Whitby Lobster Hatchery.</b></p> <p><b>Informed the public about the mass mortality event which shock the coastline throughout 2022.</b></p> <p><b>Provided education about lobsters, fisheries and maritime history to roughly 5000 people over the course of the year.</b></p> <p><b>Worked with universities to provide opportunities for research and placements.</b></p> |

### Additional information (optional)

You may choose to include further statements where relevant about:

|  |           |   |
|--|-----------|---|
| Achievements against objectives set                          | Para 1.41 | <p><b>To install the lobster hatchery facility – achieved</b></p> <p><b>Begin to inform, educate and inspire the general public about native marine biodiversity, maritime history and the work of our charity – achieved</b></p> |
| Performance of fundraising activities against objectives set | Para 1.41 | N/a   |
| Investment performance against objectives                    | Para 1.41 | N/a   |
| Other  |           | N/a   |



## Financial Review

|  |           |  |
|--|-----------|--|
| Review of the charity's financial position at the end of the period              | Para 1.21 | <b>Finances were reviewed by the accountants and trustees.</b>   |
| Statement explaining the policy for holding reserves stating why they are held   | Para 1.22 | <b>Due to the charities infancy, we current have no liabilities including staff, rent or bills. We are also going through a phase of building development, organisation and growth. Therefore, while the charity trustees see the important of holding reserves and the need to set up a reserves policy, it is not currently in place. As a trustee board we will be working towards creating a policy of reserves by the end of reporting for 2023/24.</b> |
| Amount of reserves held  | Para 1.22 | <b>£0</b>  |
| Reasons for holding zero reserves  | Para 1.22 | <b>Deemed to be unnecessary at this stage of the charity development. No liabilities so no risk in not holding reserves while development work is ongoing. We are planning to in the future hold a separate account at the bank for reserves which will be including in the drafted reserves policy.</b>   |
| Details of fund materially in deficit  | Para 1.24 | <b>N/a</b>   |
| Explanation of any uncertainties about the charity continuing as a going concern | Para 1.23 | <b>N/a</b>   |

**Additional information (optional)**

You may choose to include further statements where relevant about:

|   |           |  |
|---|-----------|--|
| The charity's principal sources of funds (including any fundraising)            | Para 1.47 | <b>Donations from individuals, businesses and large industry</b><br><b>Some government grants and local council grants</b> |
| Investment policy and objectives including any social investment policy adopted | Para 1.46 | <b>N/a</b>   |
| A description of the principal risks facing the charity                         | Para 1.46 | <b>N/a</b>   |
| Other   |           | <b>N/a</b>   |



## Structure, Governance and Management

|   |           |   |
|---|-----------|---|
| Description of charity's trusts:  |           | charitable incorporated organisation (CIO)                        |
| Type of governing document<br>( <a href="#">trust deed</a> , <a href="#">royal charter</a> )  | Para 1.25 | <b>Articles of Association</b>                                    |
| How is the charity constituted?<br>(e.g. <a href="#">unincorporated association</a> , CIO)  | Para 1.25 | <b>CIO</b>  |
| Trustee selection methods including details of any constitutional provisions e.g. election to post or name of any person or body entitled to appoint one or more trustees | Para 1.25 | <b>Locally advertised or invitation to join the trustee board</b> |

### Additional information (optional)

You may choose to include further statements where relevant about:

|   |           |   |
|---|-----------|---|
| Policies and procedures adopted for the induction and training of trustees                | Para 1.51 | <b>All trustees have been giving access to the articles of association, most recent accounts, trustee resources via the .gov website plus additional required information</b> |
| The charity's organisational structure and any wider network with which the charity works | Para 1.51 | <b>Currently not established however in future years the charity aims to have a partnership with an Community Interest Company housed in the same</b>                         |
| Relationship with any related parties   | Para 1.51 | <b>N/a</b>  |
| Other   |           | <b>N/a</b>  |

## Reference and Administrative details

|                             |   |
|-----------------------------|---|
| Charity name                | North Sea Conservation                                  |
| Other name the charity uses | Whitby Lobster Hatchery                                 |
| Registered charity number   | 1193944   |
| Charity's principal address | Whitby Fish Market<br>9 Pier Road<br>Whitby<br>YO21 3PU |
|                             |   |

## Names of the charity trustees who manage the charity

|    | Trustee name   | Office (if any) | Dates acted if not for whole year                 | Name of person (or body) entitled to appoint trustee (if any) |
|----|----------------|-----------------|---|---|
| 1  | Gail Mackle    |                 | STARTED TRUSTEESHIP<br>10/02/2023                 |   |
| 2  | Terry Pearson  |                 |   |   |
| 3  | Mike Russel    |                 |   |   |
| 4  | James Cole     |                 |   |   |
| 5  | Neil Pickard   |                 | STARTED TRUSTEESHIP<br>10 <sup>th</sup> Feb 2023  |   |
| 6  | Alice Ackroyd  |                 | STARTED TRUSTEESHIP<br>4 <sup>th</sup> April 2022 |   |
| 7  | Hero Sumner    |                 |   |   |
| 8  | Richard Pashby |                 |   |   |
| 9  | Joe Redfern    |                 | ENDED TRUSTEESHIP<br>September 2022               |   |
| 10 |                |                 |   |   |
| 11 |                |                 |   |   |
| 12 |                |                 |   |   |
| 13 |                |                 |   |   |
| 14 |                |                 |   |   |
| 15 |                |                 |   |   |
| 16 |                |                 |   |   |
| 17 |                |                 |   |   |
| 18 |                |                 |   |   |
| 19 |                |                 |   |   |
| 20 |                |                 |   |   |

## Corporate trustees – names of the directors at the date the report was approved

| Director name |  |  |
|---------------|--|--|
|               |  |  |
|               |  |  |
|               |  |  |
|               |  |  |
|               |  |  |
|               |  |  |

## Name of trustees holding title to property belonging to the charity

| Trustee name | Dates acted if not for whole year |  |
|--------------|-----------------------------------|--|
|              |                                   |  |
|              |                                   |  |
|              |                                   |  |
|              |                                   |  |
|              |                                   |  |
|              |                                   |  |



## Funds held as custodian trustees on behalf of others

|   |     |
|---|-----|
| Description of the assets held in this capacity   | N/a |
| Name and objects of the charity on whose behalf the assets are held and how this falls within the custodian charity's objects | N/a |
| Details of arrangements for safe custody and segregation of such assets from the charity's own assets                         | N/a |

### Additional information (optional)

#### Names and addresses of advisers (Optional information)

| Type of adviser | Name | Address |
|-----------------|------|---------|
|                 |      |         |
|                 |      |         |
|                 |      |         |
|                 |      |         |

#### Name of chief executive or names of senior staff members (Optional information)

|  |
|--|
|  |
|--|

## Exemptions from disclosure

Reason for non-disclosure of key personnel details

|  |
|--|
|  |
|--|

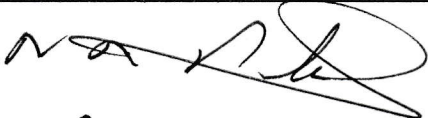

## Other optional information

|  |
|--|
|  |
|--|

## Declarations

The trustees declare that they have approved the trustees' report above.

Signed on behalf of the charity's trustees

|  |  |   |
|--|--|---|
| Signature(s)                           | <br>J Cole. | <br>Mike Russell<br>MIKE RUSSELL |
| Full name(s)                           | NEIL R. PICKARD<br>JAMES COLE.   | T. PEARSON<br>Mike Russell  |
| Position (eg Secretary,<br>Chair, etc) |  |   |
| Date                                   | 15.01.2024   |   |





# CHARITY COMMISSION FOR ENGLAND AND WALES

## Independent examiner's report on the accounts

### Section A

### Independent Examiner's Report

Report to the trustees/  
members of

Charity Name  
NORTH SEA CONSERVATION

On accounts for the year  
ended

31 MARCH 2023

Charity no  
(if any)

1193944

Set out on pages

I report to the trustees on my examination of the accounts of the above charity ("the Trust") for the year ended 31/03/2023.

Responsibilities and  
basis of report

As the charity trustees of the Trust, you are responsible for the preparation of the accounts in accordance with the requirements of the Charities Act 2011 ("the Act").

I report in respect of my examination of the Trust's accounts carried out under section 145 of the 2011 Act and in carrying out my examination, I have followed the applicable Directions given by the Charity Commission under section 145(5)(b) of the Act.

Independent  
examiner's statement

I have completed my examination. I confirm that no material matters have come to my attention (other than that disclosed below \*) in connection with the examination which gives me cause to believe that in, any material respect:

- ~~accounting records were not kept in accordance with section 130 of the Act or~~
- ~~the accounts do not accord with the accounting records~~

I have no concerns and have come across no other matters in connection with the examination to which attention should be drawn in order to enable a proper understanding of the accounts to be reached.

\* Please delete the words in the brackets if they do not apply.

Signed:

Date:

02/01/2024.

Name:

EMMA HENDERSON

Relevant professional  
qualification(s) or body  
(if any):

ACCA

Address:

84 WESTBOROUGH, SCARBOROUGH,  
NORTH YORKSHIRE, YO11 1JW.

**Section B****Disclosure**

Only complete if the examiner needs to highlight matters of concern (see CC32, Independent examination of charity accounts: directions and guidance for examiners).

**Give here brief details of any items that the examiner wishes to disclose.**

NONE.

# Balance Sheet

## North Sea Conservation As at 31 March 2023

|   | 31 MAR 2023         | 31 MAR 2022      |
|---|---------------------|------------------|
| <b>Fixed Assets</b>   |                     |                  |
| <b>Tangible Assets</b>                                      |                     |                  |
| Computer Software   | 12,410.00           | -                |
| Fixtures & Fittings   | 40,094.18           | -                |
| Less Accumulated Depreciation Fixtures & Fittings           | (2,181.42)          | -                |
| Less Accumulated Depreciation on Computer Software          | (3,102.50)          | -                |
| Less Accumulated Depreciation on Office Equipment           | (60.76)             | -                |
| Less Accumulated Depreciation on Plant and Machinery        | (16,587.56)         | (19.25)          |
| Office Equipment  | 416.64              | -                |
| Plant and Machinery   | 171,961.46          | 210.00           |
| <b>Total Tangible Assets</b>                                | <b>202,950.04</b>   | <b>190.75</b>    |
| <b>Total Fixed Assets</b>                                   | <b>202,950.04</b>   | <b>190.75</b>    |
| <b>Current Assets</b>                                       |                     |                  |
| <b>Cash at bank and in hand</b>                             |                     |                  |
| Charity Account   | 13,476.34           | 47,853.80        |
| GoCardless-GBP  | 675.82              | -                |
| Stripe GBP  | 57.67               | -                |
| <b>Total Cash at bank and in hand</b>                       | <b>14,209.83</b>    | <b>47,853.80</b> |
| Accounts Receivable   | 200.00              | -                |
| <b>Total Current Assets</b>                                 | <b>14,409.83</b>    | <b>47,853.80</b> |
| <b>Creditors: amounts falling due within one year</b>       |                     |                  |
| Accounts Payable  | 364.30              | 3,996.01         |
| Accruals  | 460.00              | 400.00           |
| GBP PayPal  | 279.95              | -                |
| Sundry Creditors  | 175,944.43          | -                |
| VAT   | (32,390.84)         | (4,762.93)       |
| <b>Total Creditors: amounts falling due within one year</b> | <b>144,657.84</b>   | <b>(366.92)</b>  |
| <b>Net Current Assets (Liabilities)</b>                     | <b>(130,248.01)</b> | <b>48,220.72</b> |
| <b>Total Assets less Current Liabilities</b>                | <b>72,702.03</b>    | <b>48,411.47</b> |
| <b>Net Assets</b>   | <b>72,702.03</b>    | <b>48,411.47</b> |
| <b>Capital and Reserves</b>                                 |                     |                  |
| Current Year Earnings                                       | 18,456.59           | 40,339.03        |
| DLA B/Fwd   | 8,072.44            | -                |
| Owner A Funds Introduced                                    | 5,833.97            | 8,072.44         |
| Profit & Loss B/Fwd   | 40,339.03           | -                |
| <b>Total Capital and Reserves</b>                           | <b>72,702.03</b>    | <b>48,411.47</b> |

# Fixed Asset Reconciliation

## North Sea Conservation

For the year ended 31 March 2023

| SOURCE                         | COST ACCOUNT           | OPENING COST | OPENING ACCUM<br>DEP | OPENING BOOK<br>VALUE | CLOSING COST | CLOSING ACCUM<br>DEP | CLOSING BOOK<br>VALUE |
|--------------------------------|------------------------|--------------|----------------------|-----------------------|--------------|----------------------|-----------------------|
| <b>Computer Software</b>       |                        |              |                      |                       |              |                      |                       |
| Balance Sheet                  | Computer Software      | -            | -                    | -                     | 12,410.00    | 3,102.50             | 9,307.50              |
| Asset Register                 | Computer Software      | -            | -                    | -                     | 12,410.00    | 3,102.50             | 9,307.50              |
|                                | Difference             | -            | -                    | -                     | -            | -                    | -                     |
| <b>Fixtures &amp; Fittings</b> |                        |              |                      |                       |              |                      |                       |
| Balance Sheet                  | Fixtures & Fittings    | -            | -                    | -                     | 40,094.18    | 2,181.42             | 37,912.76             |
| Asset Register                 | Fixtures & Fittings    | -            | -                    | -                     | 40,094.18    | 2,181.42             | 37,912.76             |
|                                | Difference             | -            | -                    | -                     | -            | -                    | -                     |
| <b>Leasehold Improvements</b>  |                        |              |                      |                       |              |                      |                       |
| Balance Sheet                  | Leasehold Improvements | -            | -                    | -                     | -            | -                    | -                     |
| Asset Register                 | Leasehold Improvements | -            | -                    | -                     | -            | -                    | -                     |
|                                | Difference             | -            | -                    | -                     | -            | -                    | -                     |
| <b>Office Equipment</b>        |                        |              |                      |                       |              |                      |                       |
| Balance Sheet                  | Office Equipment       | -            | -                    | -                     | 416.64       | 60.76                | 355.88                |
| Asset Register                 | Office Equipment       | -            | -                    | -                     | 416.64       | 60.76                | 355.88                |
|                                | Difference             | -            | -                    | -                     | -            | -                    | -                     |
| <b>Plant and Machinery</b>     |                        |              |                      |                       |              |                      |                       |
| Balance Sheet                  | Plant and Machinery    | 210.00       | 19.25                | 190.75                | 171,961.46   | 16,587.56            | 155,373.90            |
| Asset Register                 | Plant and Machinery    | 210.00       | 19.25                | 190.75                | 171,961.46   | 16,587.56            | 155,373.90            |
|                                | Difference             | -            | -                    | -                     | -            | -                    | -                     |
| <b>Total Difference</b>        |                        | -            | -                    | -                     | -            | -                    | -                     |



# Profit and Loss

## North Sea Conservation

For the year ended 31 March 2023

|  | 2023             | 2022             |
|--|------------------|------------------|
| <b>Turnover</b>                            |                  |                  |
| Donations                                  | 72,576.55        | 86,537.78        |
| Other Revenue                              | -                | 4,960.00         |
| Sales                                      | 2,939.67         | -                |
| <b>Total Turnover</b>                      | <b>75,516.22</b> | <b>91,497.78</b> |
| <b>Cost of Sales</b>                       |                  |                  |
| Cost of Goods Sold                         | 3,948.28         | 2,315.96         |
| Direct Wages                               | -                | 1,638.00         |
| <b>Total Cost of Sales</b>                 | <b>3,948.28</b>  | <b>3,953.96</b>  |
| <b>Gross Profit</b>                        | <b>71,567.94</b> | <b>87,543.82</b> |
| <b>Administrative Costs</b>                |                  |                  |
| Advertising & Marketing                    | 590.49           | 6,968.53         |
| Audit & Accountancy fees                   | 60.00            | 400.00           |
| Bank Fees                                  | 131.09           | 54.00            |
| Charitable and Political Donations         | 428.37           | -                |
| Consulting                                 | 30,840.67        | 30,284.59        |
| Depreciation Expense - Computer Software   | 3,102.50         | -                |
| Depreciation Expense - Fixtures & Fittings | 2,181.42         | -                |
| Depreciation Expense - Office Equipment    | 60.76            | -                |
| Depreciation Expense - Plant & Machinery   | 16,568.31        | 19.25            |
| Entertainment-100% business                | 312.50           | -                |
| General Expenses                           | 818.55           | 1,113.67         |
| Insurance                                  | 379.51           | -                |
| Interest Paid                              | (0.41)           | -                |
| IT Software and Consumables                | 339.68           | 72.00            |
| Legal Expenses                             | 500.00           | 3,581.67         |
| Motor Vehicle Expenses                     | 313.93           | -                |
| Planning & Development                     | 12,088.24        | -                |
| Postage, Freight & Courier                 | 117.03           | -                |
| Printing & Stationery                      | 526.18           | 331.97           |
| Prior Year Adjustment                      | (12,967.00)      | -                |
| Rates                                      | -                | 3,023.95         |
| Rent                                       | 5.00             | 25.00            |
| Repairs & Maintenance                      | 5,409.61         | 1,330.16         |
| Site Hire                                  | 2,010.04         | -                |
| Telephone & Internet                       | 224.88           | -                |
| Travel - National                          | 320.00           | -                |
| <b>Total Administrative Costs</b>          | <b>64,361.35</b> | <b>47,204.79</b> |
| <b>Operating Profit</b>                    | <b>7,206.59</b>  | <b>40,339.03</b> |

|  | 2023             | 2022             |
|--|------------------|------------------|
| <b>Other Income</b>                                  |                  |                  |
| Grant  | 11,250.00        | -                |
| <b>Total Other Income</b>                            | <b>11,250.00</b> | <b>-</b>         |
| <b>Profit on Ordinary Activities Before Taxation</b> | <b>18,456.59</b> | <b>40,339.03</b> |
| <b>Profit after Taxation</b>                         | <b>18,456.59</b> | <b>40,339.03</b> |