



# **OXFORDSHIRE PLAY**

# **ASSOCIATION**

# **ANNUAL REPORT**

# **2016**

**For the Period 1<sup>st</sup> April 2015 to 31<sup>st</sup> March 2016**

**OPA is a Charitable Incorporated Organisation**  
**Registered Charity Number 1160320**

OPA's mission is to champion and to support the rights of all Children and Young People to have access to high quality, inclusive Play opportunities to improve their Physical, Mental and Spiritual Wellbeing



## **OPA ORGANISATIONAL DETAILS**

### **OPA TRUSTEES**

Chair = Anda Fitzgerald O'Connor

Treasurer = Meryl Smith

Trustees = Cllr Mark Lygo, Anne Bissell, Roger Beattie and Steph Dorling,  
(Carly Willis – Resigned April 2015)

### **OPA STAFF**

Manager = Martin Gillett

Training Manager = Brid Muldoon

Play Promotion Officer = Julia Graw

Play Development / Outreach Officer = Jane Gallagher

Finance Officer = Jade Jarvis

Training Staff = Elaine Johnson, Janice Bosley and Carol Richards

Sessional Playworkers = Kate Arthur, Laura Lewis and Sayema Monam

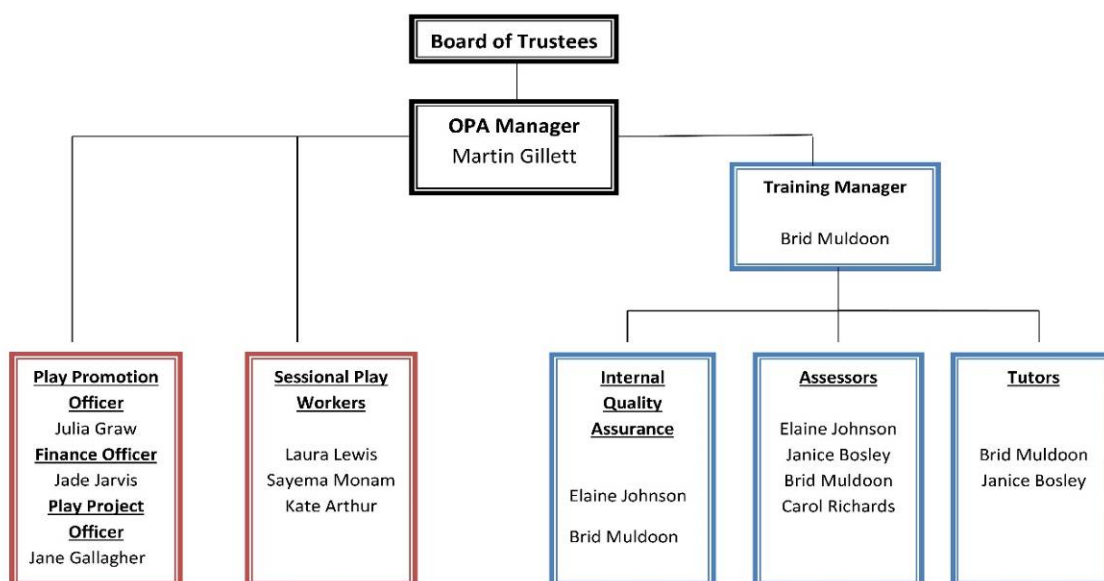
### **BANKERS**

CAF Bank Ltd, 25 Kings Hill Avenue, Kings Hill, West Malling, Kent, ME19  
4JQ

### **ACCOUNTANTS / AUDITORS**

Critchleys, Greyfriars Court, Paradise Square, Oxford. OX1 1BE

## Oxfordshire Play Association Structure




---

## OPA STATEMENT OF PUBLIC BENEFIT

---

OPA and its Trustees confirm that they have complied with the Statutory Duty in Section 17(5) of the 2011 Charities Act to have due regard to Public Benefit guidance published by the Charity Commission.

The Aims of OPA are to support Children and Young People through Families and Groups / Individuals / Organisations who work in Playwork. We do this on a fully inclusive basis across Oxfordshire taking into account all relevant legislation and guidelines.

---

## OPA ACCOUNTS

	2015/16	2014/15	2013/14	2012/13	2011/12
Income	£135,470	£226,251	£228,201	£192,566	£205,423
Expenditure	£170,091	£195,995	£202,705	£202,041	£213,861

A full copy of our Audited Accounts are available on request.

# **Do you share our belief that PLAY is vital for the lives of Children and Young People?**

**Help us to make Oxfordshire the most play-friendly county in England.**

**Become a 'Friend of OPA' – and support us to continue our work across Oxfordshire.**

**What does OPA do? We:**



**play 4 life**



- ❖ Help play providers to offer high quality play opportunities for all
- ❖ Run user-friendly training on all kinds of play-related topics
- ❖ Campaign for national and local play-friendly policies and decisions

We are a Charitable Incorporated Organisation (Registered Charity Number 1160320) and have been working with, and for the Families and Communities of Oxfordshire since 1974.

For just £1 per month you can ensure that this work continues into the future by becoming a friend of OPA. **Come and play with us!**

---



OXFORDSHIRE PLAY ASSOCIATION

## **OPA MANAGERS REPORT 2015-16**

I am happy to present our Annual Report for 2016, another extremely busy year for OPA.

As planned we completed the change in our legal structure from that of a Registered Charity to that of a Charitable Incorporated Organisation (Registered Charity Number 1160320) on 1<sup>st</sup> April 2015. This change will enable us to become more flexible and adaptable which is vital for our future in these current challenging times.

2015/16 saw us change some of the services that we offer in line with our Business Plan and Vision. Services that we used to offer such as Infrastructure Support are no longer funded and we are evolving into a Service Delivery organisation to ensure we remain relevant moving forward. Many of these new services and projects (Saturdays, Play Rangers, Scrapstore Playpod) will be fully reflected in our report for 2017.

We enjoyed many success stories again in 2015/16,

- \* Our Training department, under the expert stewardship of Brid and our Training team continued to deliver high quality Training to many learners across Oxfordshire.
- \* Our Centre Inspection from CACHE, our awarding body saw us again achieve a perfect report with no actions required.
- \* Our Community PLAYback project delivered 5 further events across Oxfordshire.
- \* Our Playful Woodlands project in Magdalen Wood, Oxford was acknowledged with a 'Recognising the Contribution to Oxford' award at the Oxford Preservation Trust awards.
- \* Our Play & Activity days delivered 7 further events right across Oxfordshire which were attended by 11,500 Children, Young People and their Families (this means that we have now delivered 42 events in the past 4 years which have been attended by over 65,000 people!)

We continue to state the case for Play at many events, meetings and working groups across the County and we are now rightly recognised as the 'Play Specialists' within Oxfordshire.

I must again place on record my Thanks to the amazing staff team at OPA, we ask more of them each and every year and each year they raise the bar higher and higher. They are an inspiration to work with. I must also thank the OPA Trustees for all their continued support, guidance and advice and last but not least a huge Thank You to our funders, supporters and partners who work with us to deliver our work for the Children and Families of Oxfordshire.

'We do not stop playing because we grow old, we grow old because we stop playing'

Thank You, Martin, OPA Manager



## **THE HISTORY OF THE OXFORDSHIRE PLAY ASSOCIATION**

October 1974 – OPA is ‘born’ following a meeting convened at the Community Centre in Lake Street, Oxford.

November 1978 – OPA is officially registered with the Charity Commission, Registered Charity Number 276706.

1977 / 1978 – First recorded set of Accounts showing Annual Income of £69.92 against Annual Expenditure of £72.66

September 1992 – Working party established towards creating the OPA that exists today.

January 1993 – First public meeting held at Yarnton Village Hall of OPA, the County Play Forum.

July 1993 – First Play Newsletter is produced by OPA who are based at Osney Day Nursery in Botley Road, Oxford.

1994 – OPA continues to grow very quickly, services now offered include the Oxfordshire Playcare Foundation Course, Management Training Course and the Playcare Promotion Unit. The first OPA Playbox Catalogue is issued and OPA launch its own Payroll Service.

1994 – OPA moves to Agriculture House in Eynsham after outgrowing its old premises.

1995 – With funding support from the Heart of England TEC, OPA launch the Oxfordshire Childrens Information Service – this service went live on 1<sup>st</sup> July 1996.

July 1999 – OPA celebrates its 25<sup>th</sup> Birthday with an event at Weston On The Green.



August 2000 – First recorded Playday event held at Blackbird Leys Leisure Centre with 2000 Children & Young People in attendance.

September 2001 – Childrens Information Service becomes independent of OPA and moves to Long Hanborough.

December 2003 – OPA is awarded 3 year funding of £186,000 from the Learning and Skills Council to deliver Playwork Training across Oxfordshire.

October 2006 – OPA moves to Thorney Leys Park in Witney.

2006 – First County and District Play strategies written.

2007 – OPA moves to its present office location in Cowley, Oxford.

2008 – First National Play Strategy is issued by the Department for Children, Schools and Families as part of a Commitment from the Childrens Plan.

Summer 2008 – First Countywide, Oxfordshire Playday takes place at Florence Park in Oxford, attended by 5000 people.

2008 – West Oxfordshire Play Ranger Project is launched.

February 2012 – OPA secure the County Council contract to deliver Playwork Training across Oxfordshire.

Spring / Summer 2012 – First Armed Forces Playdays are delivered at the 6 Armed Forces bases in Oxfordshire.

2013 – Countywide Play Conference is reborn, delivered at Brookes University.

2013 – Twelve Playday events are delivered across Oxfordshire, attracting a record audience of 23,100 Children, Young People and their Families.

September 2014 – OPA 'Community PLAYback' pilot project is delivered.

October 2014 – First Autumn /Winter Playdays are delivered at Witney and Sonning Common in October Half Term.

April 2015 – OPA changes its legal structure from that of a Registered Charity to a Charitable Incorporated Organisation, Registered Charity Number 1160320

## REPORT ON OPA PLAY AND ACTIVITY DAYS - 2015



### 'BUILDING COMMUNITIES THROUGH PLAY'

Events Organised, Managed & Funding Secured by;



**In 2015 we delivered 7 large scale, Community Play & Activity days across Oxfordshire.**

**ALL of these events offered both FREE Entrance and FREE Activities to ensure an inclusion for ALL**

13 <sup>th</sup> June 2015	Wood Farm	250
11 <sup>th</sup> July 2015	Abingdon (Southern Town Park)	1000
22 <sup>nd</sup> July 2015	Banbury	3500
29 <sup>th</sup> July 2015	Woodstock	1500
5 <sup>th</sup> August 2015	Bicester	2500
12 <sup>th</sup> August 2015	Wallingford	2000
12 <sup>th</sup> September 2015	Northway & Marston	750
(Ave 1643 per event)	<b><u>GRAND TOTAL</u></b>	<b><u>11,500</u></b>

2012	1354 per event
2013	1925 per event
2014	1318 per event

**An individual event report and evaluation is available for each separate event**

## WOOD FARM PLAY AND ACTIVITY DAY

01865 779474  
www.oxonplay.org.uk



OXFORDSHIRE PLAY ASSOCIATION

### BUILDING COMMUNITIES THROUGH PLAY

### FREE ENTRANCE AND FREE ACTIVITIES

**SATURDAY 13TH JUNE 11AM UNTIL 3PM**  
**WOOD FARM RECREATION GROUND,**  
**(BEHIND ATKYNS ROAD SHOPS)**  
**WOOD FARM, OXFORD. OX3 8RE**



Orinoco Scrapstore, Drumming, Soft Play, Go Kart Party, Museum Service (With Live Specimens!), Body Zorbing, Local & Mobile Childrens Centres, Winnie The Witch, Fire Play, Giant Bubbles, DIY Face Painting, Smoothie Bike, Graffiti Wall, Skatepark, Sports Tasters, Air & Army Cadets, Bright sparks Science And Lots Lots More...

Please note that **NO** Childcare is provided / There is **NO** parking on site—please use Public Transport (Bus Numbers 4 & 10) / Food will need to be purchased or please do bring a picnic / This event will be photographed and / or filmed



### FREE ENTRANCE AND FREE ACTIVITIES!!

**WOODSTOCK PLAY AND ACTIVITY**  
**WEDNESDAY 29TH JULY— 11AM UNTIL**  
**THE MARLBOROUGH SCHOOL PLAYING FIELD**  
**SHIPTON ROAD, WOODSTOCK, OX20 1J**



Orinoco Scrapstore, Mobile Childrens Centre, Drumming, Soft Play, Bouldering Wall, Go Kart Party, Body Zorbing, Winnie the Witch & Wilbur, Fire Play, Giant Bubbles, Nature Play, DIY Face Painting, Smoothie Bike, Graffiti Lasertag, Story Tailors, Army Cadets and more...

### BUILDING COMMUNITIES THROUGH PLAY



Please note that **NO** Childcare is provided - Food will need to be purchased or please do bring a picnic - Limited Parking will be available at the Marlborough School Woodstock - This event will be photographed and / or filmed  
Contact—www.oxonplay.org.uk / 01865 779474



### FREE ENTRANCE AND FREE ACTIVITIES

**NORTHWAY AND MARSTON  
PLAY AND ACTIVITY DAY**  
**SATURDAY 12TH SEPTEMBER 2015**  
**11AM UNTIL 3PM**  
**NORTHWAY RECREATION GROUND,**  
**OXFORD. OX3 9RF**



Local & Mobile Childrens Centres, Orinoco Scrapstore, Drumming, Tricky Trails Biking, Soft Play, Go Kart Party, Museum Service, Body Zorbing, Fire Play with HOTW, Giant Bubbles, Bright Sparks Science, Smoothie Bike, DIY Face Painting, Lasertag, and much, much more!!!

This is a Family themed event and as such **NO** Childcare is provided / Please do feel free to bring a picnic although food will be available to purchase on site / Please walk or use Public Transport for the event as there is **NO** parking on site / This event will be photographed and filmed.

For further information contact

www.oxonplay.org.uk / 01865 779474



OLD MARSTON PARISH COUNCIL

NORTHWAY COMMUNITY ASSOCIATION



OXFORDSHIRE PLAY ASSOCIATION

### FREE ENTRANCE AND FREE ACTIVITIES!

www.oxonplay.org.uk / 01865 779474

**ABINGDON PLAY AND ACTIVITY DAY**  
**SATURDAY 11TH JULY— 11AM TO 3PM**  
**SOUTHERN TOWN PARK, LAMBRICK WAY, OFF**  
**PRESTON ROAD, ABINGDON. OX14 5TJ**



Orinoco Scrapstore, South Abingdon & Mobile Childrens Centres, Health Bus, Drumming Workshops, Bouldering Wall, Tricky Trails Biking, Soft Play, Go Active / Active Women, Go Kart Party, Museum Service (with Live Specimens!), Body Zorbing, Fire Play, Giant Bubbles, Bright Sparks Science, DIY Face Painting, Smoothie Bike, Graffiti Wall, Mobile Skatepark, Story Tailors, Winnie the Witch & Wilbur, Science Oxford, Sports Tasters and much, much more...



Please note that **NO** Childcare is provided / Food will need to be purchased or please feel free to bring a picnic / Limited Parking is available at Lambrick Way Sports Field / This event will be photographed and / or filmed.



**BANBURY  
PLAY DAY  
By the sea**

**22 July 11-3pm**

Come along to a  
*Free fun-packed day*  
at People's Park Banbury

ACTIVITIES ON THE DAY INCLUDE:

- Banbury Play Bus / Play Rangers • Children Centre's activities
- Radio Herten Road Show • Lets Play inclusive play activities
- Cherwell Youth Activities • Sunrise Multi Cultural Project activities
- Sports Zone & outdoor-bound activities • Health Zone
- Outdoor arts in the park • Circus Skills
- and much more!

Working in partnership with the Cherwell Play Partnership group



### FREE ENTRANCE AND FREE ACTIVITIES!!

### WALLINGFORD PLAY AND ACTIVITY DAY

**WEDNESDAY 12TH AUGUST 11AM - 3PM**  
**THE KINECROFT, WALLINGFORD. OX10 0DT**



LOCAL AND MOBILE CHILDRENS CENTRES, ORINOCO SCRAPSTORE, DRUMMING, BOULDERING WALL, SOFT PLAY, GO KARTS, MUSEUM SERVICE (WITH LIVE SPECIMENS!!), BODY ZORPING, WINNIE THE WITCH & WILBUR, FIRE PLAY, GIANT BUBBLES, DIY FACE PAINTING, SMOOTHIE BIKE, LASTERTAG, STORY TAILORS, GRAFFITI WALL AND LOTS, LOTS MORE!!!...



Please note that **NO** Childcare is provided, Food will need to be purchased or please do feel free to bring a picnic, this event will be photographed and / or filmed.  
For further information please contact OPA on 01865 779474 or www.oxonplay.org.uk



### FREE ENTRANCE AND FREE ACTIVITIES



### BICESTER PLAY AND ACTIVITY DAY

**WEDNESDAY 5TH  
AUGUST @ GARTH PARK,  
BICESTER. OX26 6PS**  
**11AM UNTIL 3PM**



FOR FURTHER INFORMATION CALL—OXFORDSHIRE  
PLAY ASSOCIATION 01865 779474 OR BICESTER  
TOWN COUNCIL 01869 252915

FOOD WILL NEED TO BE PURCHASED OR PLEASE DO BRING A PICNIC / **NO** CHILD CARE IS PROVIDED—PARENTS / CARERS ARE RESPONSIBLE FOR CHILDREN AT ALL TIMES / THIS EVENT WILL BE PHOTOGRAPHED AND - OR FILMED



We have had 3-4 disabled children use the karts this year which has increased their confidence and the parents smiles is fantastic to see.

One of the ladies whose son was down syndrome has said that she will consider the karts for her son's party and that it will be brilliant for him to have all his friends there at something which he can be as good as them at. The sporty parties are difficult for him.

#### Julio Barresi - Go Kart Party

We have also gone through 7 pints of fake blood and approximately 300 bandages meaning we have bandaged near 900 young people!

In addition we estimate nearly 2000 young people have had a go at CPR.

#### Reagan - Access First Aid

We engaged with the following people around Dental Care and Information; 22nd July = 40, 29<sup>th</sup> July = 220, 5<sup>th</sup> August = 130

#### Charlotte Iddon - Community Dental Services

I got chatting to Rob Thomas at the Woodstock event - he was keen to employ a young person for his Woodstock based business, Streaming Ltd but hadn't had any success with asking the school etc. I put him in touch with a training provider in Oxford and he now has an IT Apprentice due to start in October.

#### Melanie Ringer - Oxfordshire Apprenticeships



Falls Training at Banbury to reduce A&E admissions through unintentional injuries

Smoothie Bike at Wallingford, promoting Physical Activity and Healthy Eating



Orinoco Scrapstore at Woodstock, promoting Play using recycled materials

Eat Well, Move More with Oxfordshire County Council at Abingdon





Dear Martin

At the August Woodstock Town Council meeting I was charged, on behalf of the Council, with writing to thank the Oxfordshire Play Association for the very successful Play & Activity Day held last month on the Marlborough School field.

Those of us who were able to attend the Day were impressed by both the play opportunities and the other activities which made quite serious matters, such as training children on how to do CPR, imaginative and enjoyable experiences. Several of the stalls seemed as relevant for parents as for children thus creating an Activity Day for all.

So once again many thanks and all good wishes

Elizabeth Poskitt, Town Mayor, Woodstock

---

Hi Martin,

Thank you so much for all you did to make Saturday such a great event. The many people I spoke to were blown away that the event, the first one of its kind to be held in the area, provided so much variety and was free to all. The latter very much reflects the work we do in the area all of which is free so that things are maximally accessible to all who would come along. You and your helpers did a great job, thank you all.

Ray, Senior Pastor, Abingdon Vineyard Church

---

# OPA PLAY AND ACTIVITY DAYS 2015

## KEY AIMS AND OBJECTIVES

### For Children & Young People

- 1) Promote Positive Behaviours & Activities
- 2) Promote Increased Levels of Physical Activity
- 3) Promote Healthy Weight Management

### For Parents / Carers

- 1) Provide an Event offering both **FREE** Entrance & **FREE** Activities to Ensure an Inclusion for **ALL**
- 2) Demonstrate how Play can be achieved on a Zero / Minimal Budget using Natural & Recycled materials
- 3) Provide information on services and activities available in the local and wider area

### For Communities

- 1) Encourage a greater sense of belonging to promote Active & Engaged Communities
- 2) Promote local clubs, groups and societies
- 3) Involve local groups, communities and Children & Young People in the planning and delivery of each event





Just wanted to let you know how much my little boy enjoyed the activity day in Abingdon on Saturday. I thought he would have gone straight to the go carts and never left them but actually he was far more occupied with so much of the other activities. He loved the bubble man and made a number of repeat visits. The 'grass track cycle course' was another favourite, wearing the gloves and helmet and using a pretty cool bike really put him in a racing zone! A new bike is now top of his Christmas list! He also visited the Smoothie Bike, the Body Zorbs, the stocks and the police transit. I've often said from a policing and community perspective these are great days but now I can also say from a parent's and child's point of view they are fabulous, I think you do a great job in organising these and it was obvious to see that they add great joy to the community, which I'm sure is especially valued in the current difficult times. Well done mate, I know all the agencies pull together well and give their time but I hope you also get the recognition you deserve, it was brilliant -

**Michael Dix, School Liaison Officer, Safer Schools Partnership, Thames Valley Police**



## OPA PLAY AND ACTIVITY DAYS 2015

### KEY LEARNING POINTS

- 1) Expand 'Health Zone' at each event
- 2) Ensure food provision offers Healthy alternatives
- 3) Try and encourage more local groups to attend each event to promote themselves
- 4) Offer more 'Free Play' opportunities (eg Loose Parts)
- 5) Create a team of Volunteer Playworkers



## **Training Department Report**

### **Brid Muldoon (Training Officer)**

Another year full of fantastic success stories in OPA Training Department. Not one of these stories would be a success without the wonderful team who is dedicated to assessing and delivering an excellent service to all the learners undertaking our Playwork courses. Thank you to Elaine Johnson, Janice Bosley and Carol Richards who are a pleasure to work with. *'A big thanks to, Brid Muldoon OPA Training Officer and Elaine Johnson, my IQA for the support provided'* (Carol Richards)

We started the New Year, 2016 on a high after receiving another excellent result from our Quality Audit which our awarding body, Cache, carried out in November 2015.

More than 49 learners have received a Playwork qualification which range from Level 1 to Level 3 between the period of April 2015 – March 2016.

Congratulations and well done to all our learners!

#### **Take 5 for Play – 5 Learners**

Julia Graw, Nikki Cox, Cecily Donnelly, Danielle Costello, Michael Wood

#### **QCF Playwork Level 2 – 17 Learners**

Rowena Flanagan, Leah Knight, Dolcy D'Souza, Marisha Turner, Laura Radbourne, Anthonia Oti, Kristina Scown, Sayema Monam, Kayleigh Newbold, Magdalena Guja, Charlotte Mills, Laura Lewis, Rachel Higgins, Lauren Buck, Luke Green, Libertad Vasquez de Rosswag, Emma Payne,

#### **QCF Playwork Level 3 – 24 Learners**

Janice Bolton, Hannah Cardona, Rachel Barrett, Catherine Day, Geraldine Mugford, Michael Harding, Julie Dan, Deborah Jillians, Sally-Anne Edgington, Kayleigh O'Donnell, Melanie Kingham, Patricia Deacon, Linda Jackson, Katherine Green, Jack Barnett, Joey Phillips, Rebecca Dunnett, Modupe Adefala, Tania Constance, Jane Kennedy, Sarah Bones, Beatriz Rodriguez-Bachiller, Nicki Turner, Elaine Carr.

### **QCF Playwork Level 3 Award in Transition from Early Years**

**October 2015– March 2016 - 8 Learners:**

Cindy Cave, Karen Challen, Helen Hambidge, Janet Heapy, Helena Cuddon, Marian Long, Trina Merry, Claire Sayce

I also had the pleasure of delivering five bespoke courses for the training centre to local schools and play settings throughout Oxfordshire. These courses are designed by myself and the provision leader or the Headteacher to meet the needs of the staff teams with the view of making high quality play opportunities available to children and young people. In the table below I have given details of the courses showing attendance figures to the right.

<b>Date</b>	<b>Setting/School</b>	<b>Training Delivered</b>	<b>Attendance</b>
<b>06.05.15</b>	Magpies Kidlington	Behaviour Leadership in Playwork	18
<b>02.06.15</b>	Chilton School	Play at Playtimes	8
<b>21.07.15</b>	Thomley Activity Centre	Inclusive Play	15
<b>27.07.15</b>	Let's Play, Banbury	The Importance of Play	38
<b>10.02.16</b>	All Saints Didcot	'Playing Up'	7

#### **Learner Experiences' .....**

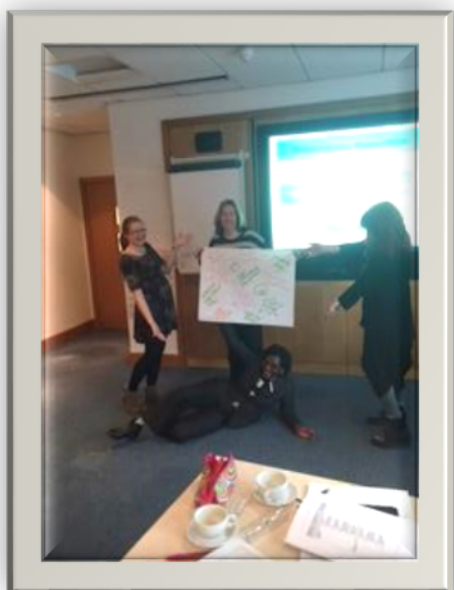
*'The course has enabled me to have a greater understanding of children's Play'. (Level 2 learner)*

*'Less adulteration of children's Play... and more risky play opportunities'. (Level 3 learner)*

*'This is a life skill. It is beyond 'bread & butter'. I see the world through the lens of PLAY!' (Level 3 learner)*

Having the capacity to deliver the short courses alongside the qualification workshops was a huge strain on the very small training team. But on reflection, it is an amazing achievement to have reached and trained 140 learners in play and playwork and to share with them extensive knowledge in playwork practices and theories.

Looking ahead.....With regards to a qualified workforce in Playwork the charity is struggling to secure any funding streams since the cuts encountered by local authority who previously funded our Playwork qualifications. To keep play on the agenda we are exploring new avenues such as, Therapeutic Playwork which we are developing with Gordon Sturrock, who is a well-established author and play theorist. We are also delivering a new level 1 Playwork course, Play-Way with Playwork Partnerships and we are working with the Bristol Play Pod to source primary schools in Oxfordshire with this excellent opportunity for children's playtimes.



## **OXFORDSHIRE PLAY ASSOCIATION –**

### **PLAYFUL WOODLANDS PROJECT**

#### **PILOT PROJECT AT MAGDALEN WOODS, WOOD FARM**



#### **PROJECT AIMS**

OPA and its partners want to encourage more Children and Young People and their Families to utilize the large areas of Woodland available in Oxfordshire.

This project was originally designed in May 2012 and during its development has used the following sources of reference;

- Natural Thinking (report on the beneficial effect of being outdoors) – RSPB – Dr William Bird – June 2007
- Play Naturally (a review of childrens natural play) – Play England – 2007
- Fun Ideas for Outdoor Play – Play 4 Life / Change 4 Life
- Understanding the diverse benefits of learning in natural environments – Kings College London – April 2011
- The Play Return (a review of the wider impact of Play initiatives) – Tim Gill / Childrens Play Policy Forum – July 2014
- What is Play and Why is it Important – Play Wales – November 2014

The Playful Woodlands project will encourage quality family time, an understanding and awareness of the natural environment, increased levels of Physical Activity and improved life skills through Risky Play.

The project will support Woodland owners / managers to make their woodlands more accessible by placing, discreet, natural play items within natural spaces. We aim to use natural materials in any 'construction' so that Insurance, maintenance etc are not an issue.

## **THE PILOT PROJECT**

After much consultation with partners and networks it was decided that Magdalen Woods in Wood Farm in Oxford would be the location for our pilot project, we worked closely with the 'Friends of Magdalen Wood' in identifying the local need and designs for the project.

Magdalen Wood was chosen as it was vastly underused by the local Community and it was being used for anti social behavior. We also used the 2007 report by John Carter, Wood Farm Small Area Survey which was commissioned by Oxford City Council, Oxfordshire Fire and Rescue and the local NHS / Health Authority.

### **Wood Farm Small Area Survey**

#### **Introduction**

The Wood Farm area is a small estate in North East Oxford between Headington and Blackbird Leys. It is comprised of both private and council housing. Many of the owner occupiers in the area bought their house under the right to buy scheme and the estate was originally largely populated by council tenants.

One of the themes to emerge from the research in this area is that many residents feel that Wood Farm is the forgotten area of Oxford. Because the estate is relatively small and has been subsumed within larger, more affluent, wards the sorts of difficulties experienced by residents within the area have rarely attracted the same sort of attention that areas such as Blackbird Leys, Barton and Rose Hill have.

After much discussion and further consultation it was decided to create a 'Dragon of Magdalen Wood'

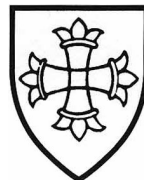
Following successful funding applications to the Trust for Oxfordshires Environment (TOE2), Oxford University and St Michaels and All Saints Charities, local sculptor Stuart Turner was commissioned to create the Dragon.

**THE DRAGON OF MAGDALEN WOOD HAS  
RETURNED!!!**

**YOU ARE INVITED TO MEET HER AT  
MAGDALEN WOOD IN WOOD FARM (OFF  
NUFFIELD ROAD) ON SUNDAY 14TH JUNE  
FROM 10AM UNTIL 2PM**



**Come and learn about the Dragon's return  
with Storyteller Chris Smith, learn about  
Dragon Fire, make Dragon Charms, enjoy  
Fire Play and eat Dragon Pizzas with  
Going Wild and the Nature Effect...you can  
even make your own Dragons Den!...most  
of all, discover the Dragon herself...she's  
alive, she's growing and waiting to Play!!!  
ENTRY AND ALL ACTIVITIES ARE FREE!!**



**This event is part of the Oxfordshire  
Play Association— Playful Woodlands  
Project, for further information please  
call 01865 779474 or visit  
[www.oxonplay.org.uk](http://www.oxonplay.org.uk)**



OXFORDSHIRE PLAY ASSOCIATION



## Oxford Mail Article – Monday 15<sup>th</sup> June;

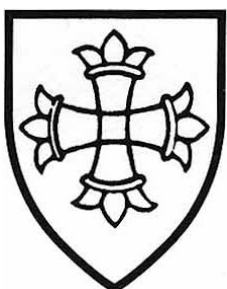


### Quote from Jo Schofield, Going Wild;



'It was such a wonderful event, a magical wood with a truly awesome dragon emerging from it. Thank you Stuart; you worked so hard and really created something special. I certainly enjoyed the event and I spoke to so many people and literally loads of children who thought it was just the best thing ever! Most of them never knew this amazing wood existed and said they would definitely be coming back so I think we achieved our aim. I was so happy that the word is now out that the dragon is there and waiting to play'

OPA would like to Thank our funders, partners and supporters who made this project happen;





The Community PLAYback Project is a hybrid project of our Playday and Street Play initiatives.

In essence it is a 'mini' Playday delivered within a Street or Community location so that we are bringing opportunities to the 'front door' of families who need support and ideas. Our project locations are chosen / selected by our partners so that they are delivered where there is an identified need.

Following the delivery of our pilot project in Owens Way in Cowley in September 2014 we delivered 5 further events during the period of this report;

Carterton – Market Place

Witney – Taphouse Avenue

Oxford – Florence Park

Chipping Norton – Cotswold Crescent

Banbury - Bretch Hill



**Community PLAYback** **OPA** **Community PLAYback**  
OXFORDSHIRE PLAY ASSOCIATION

## CARTERTON PLAY AND ACTIVITY DAY

**SATURDAY 18TH JULY—11AM UNTIL 3PM**  
CARTERTON MARKET SQUARE, ALVESCOT ROAD, CARTERTON, OX18 3JL



**FREE ENTRY AND FREE ACTIVITIES**  
This event is part of the Oxfordshire Play Association—Community PLAYback Project—Building Communities Through Play



Drumming Workshops—Airplay—Go Kart Party—Fire Play—  
GLL—Smoothie Bike—DIY Face Painting—Orinoco  
Scrapstore—Carterton & Mobile Childrens Centres—Winnie the  
Witch & Wilbur—First Aid Demos and more...

**MANNINGTON TRUST**  **Cottsway**

For further information about this event please contact the Oxfordshire Play Association on 01865 779474 or [www.oxonplay.org.uk](http://www.oxonplay.org.uk)  
**Please note that Childcare is NOT provided / This event will be photographed and / or filmed**

**Community PLAYback** **OPA** **Community PLAYback**  
OXFORDSHIRE PLAY ASSOCIATION

# Let's Play

Oxfordshire Play Association are really pleased to be working with Cottsway and Witney Town Council to deliver a day of free activities for the family right on your doorstep.

**FREE** Entrance & **FREE** Activities for all the family!

**Including:**

- 1st Aid Demos (including Bandages and Fake Blood!)
- Mobile Childrens Centre
- Health Bus and Healthwatch
- Library Service
- Smoothie Bike
- DIY Face Painting
- Muzo Academy
- Tricky Trails Biking
- Orinoco Scrapstore
- Fire Play
- Body Zorbing
- Test Ball Pit
- Boulderling Wall

For more information contact Oxfordshire Play Association on 01865 779474  
[martin.gillett@oxonplay.org.uk](mailto:martin.gillett@oxonplay.org.uk), [www.oxonplay.org.uk](http://www.oxonplay.org.uk)

## Wednesday 28<sup>th</sup> Oct

from 11am until 3pm  
at Taphouse Avenue, Witney, Oxfordshire, OX28 1JJ



## Bringing communities together through play!

Enjoy a fun-filled day for all the family at  
The Hill Youth and Community Centre, Bretch Hill, Banbury



**Thursday 7 April 11am-3pm**

- Smoothie making
- Face painting
- Human hungry hippos
- Tricky trail bikes
- Giant bubbles
- Youth Activators
- Free activities
- Free Food

**FUN FOR ALL THE FAMILY!**

For more information, call 01865 779474 or email [martin.gillett@oxonplay.org.uk](mailto:martin.gillett@oxonplay.org.uk)  
This is an open access event and no childcare is provided

## Cotswold Crescent and Activity Day

Drumming • Mobile Children's Centre • Tricky Trails Biking • Body Zorbing • Smoothie Bike • Orinoco Scrapstore • School of Rock • DIY Face Painting • Human Hungry Hippos

**Wednesday 6<sup>th</sup> April**  
**11am—3pm**  
At Cotswold Crescent Play Park,  
Chipping Norton.  
OX7 5DS

Bringing Local Communities Together Through Play

**Free Entrance and Activities for Families and Children of all ages**

This is an open access event and NO childcare is provided. This event will be photographed & filmed. On site parking is VERY limited. Please bring a picnic as NO food is provided.



**PLAYback** **OPA** **Community PLAYback**  
OXFORDSHIRE PLAY ASSOCIATION

## FLORENCE PARK PLAY AND ACTIVITY DAY

**THURS 29TH OCT—11AM UNTIL 3PM**  
FLORENCE PARK, OXFORD. OX4 3JZ  
(the event will take place next to the 'old' Playground)

**FREE ENTRY AND FREE ACTIVITIES**  
This event is part of the Oxfordshire Play Association—Community PLAYback Project—Building Communities Through Play



Health Bus & Healthwatch—Florence Park & Mobile Childrens Centres—1st Aid Demos—Fire Play—Smoothie Bike—DIY Face Painting—Tricky Trails Biking—Body Zorbing—Boulderling Wall—Muzo Academy—Fire & Rescue

**THIS EVENT WILL TAKE PLACE 'WHATEVER THE WEATHER'**

This event has kindly been supported by;  **OXFORDSHIRE COUNTY COUNCIL**

For further information about this event please contact the Oxfordshire Play Association on 01865 779474 or [www.oxonplay.org.uk](http://www.oxonplay.org.uk)  
**Please note that Childcare is NOT provided / This event will be photographed and / or filmed**

**THE STAFF, TRUSTEES AND SERVICE USERS OF OPA WOULD LIKE TO THANK THE FOLLOWING, FOR THEIR FINANCIAL AND PRACTICAL SUPPORT DURING THE PERIOD OF THIS REPORT**



Banbury Charities



Sponsored by



OLD MARSTON PARISH COUNCIL



OXFORDSHIRE PLAY ASSOCIATION

First Floor Offices, Temple Cowley  
United Reformed Church  
Oxford Road, Temple Cowley,  
Oxford. OX4 2ES

☎ 01865 779474

🖱 [www.oxonplay.org.uk](http://www.oxonplay.org.uk)

🖱 [enquiries@oxonplay.org.uk](mailto:enquiries@oxonplay.org.uk)

Facebook = Oxfordshire Play  
Association - OPA

Twitter = @oxonplay

**OXFORDSHIRE PLAY ASSOCIATION**  
**REPORT AND ACCOUNTS**  
**FOR THE YEAR ENDED 31 MARCH 2016**

**REGISTERED CHARITY NO: 1160230**

**OXFORDSHIRE PLAY ASSOCIATION**  
**CONTENTS OF THE REPORT AND ACCOUNTS**  
**FOR THE YEAR ENDED 31 MARCH 2016**

	<b>Page</b>
Trustees' Report	1 -2
Statement of Trustees' Responsibilities	3
Independent Examiner's Report	4
Statement of Financial Activities	5
Balance Sheet	6
Notes to the Accounts	7 to 11

**OXFORDSHIRE PLAY ASSOCIATION**  
**TRUSTEES' REPORT**  
**FOR THE YEAR ENDED 31 MARCH 2016**

The trustees present their report and accounts for the year ended 31 March 2016. The financial statements comply with the Charities Act 2011 and Accounting and Reporting by Charities: Statement of Recommended Practice applicable to charities preparing their accounts in accordance with the Financial Reporting Standard for Smaller Entities.

**Principal Activities**

The Charity's principal activity during the year continued to be the provision of Infrastructure Support and Training for Play providers across Oxfordshire.

**Principal Address**

The principal address of the charity is:

First Floor  
 Temple Cowley United Reformed Church  
 Oxford Road  
 Temple Cowley  
 Oxford  
 OX4 2ES

**Governing document**

The activities of the Charity are governed by a new constitution dated 4<sup>th</sup> November 2014, amended 21 January 2015.

**Trustees**

The following trustees served during the year:

Mark Lygo (elected as trustee 3<sup>rd</sup> September 2013, elected chair 15<sup>th</sup> January 2014)  
 Meryl Smith (elected treasurer 17<sup>th</sup> July 2014)  
 Anda Fitzgerald-O'Connor (elected chair 2<sup>nd</sup> March 2016)  
 Anne Bissell (elected 28<sup>th</sup> March 2007)  
 Carly Willis (resigned 20<sup>th</sup> April 2015)  
 Steph Dorling (elected 17<sup>th</sup> July 2014)  
 Roger Beattie (elected 28<sup>th</sup> March 2011)

Day to day responsibilities are delegated to Martin Gillett, Manager

**Trustees selection method**

The trustees listed above have served throughout the period, unless otherwise stated. Appointment of trustees is governed by the constitution of the charity. The board of trustees is authorised to appoint new trustees arising through resignation or death of an existing trustee.

**Reserves policy**

The long term aim of the charity is to have sufficient reserves to cover normal expenditure for a period of at least three months.

**OXFORDSHIRE PLAY ASSOCIATION**  
**TRUSTEES' REPORT**  
**FOR THE YEAR ENDED 31 MARCH 2016**

**Public Benefit**

The trustees confirm that they have complied with the duty in Section 17(5) of the 2011 Charities Act to have due regard to public benefit guidance published by the Charity Commission.

Our aims are to support those who work in Playwork, we do this on a fully inclusive basis across Oxfordshire taking into account all relevant legislation and guidelines.

**Review of the Year by the OPA manager, Martin Gillett**

2015/16 was another year of great challenges for OPA, like so many other Charitable organisations our income is reducing as we pass through this age of Austerity. In the last financial year we came to terms with the first full year of no Infrastructure Support funding Oxfordshire County Council and also, due to changes to the Early Years Foundation Stage, the closure of our Playwork Training contact with Oxfordshire County Council.

On 1<sup>st</sup> April 2015 OPA completed the change to its legal structure and became a Charitable Incorporated Organisation under a new constitution dated 4<sup>th</sup> November 2014.

As a result of these changes we are having to move away from our traditional, existing services such as Infrastructure Support and Training to be more of a Direct Service Delivery Provider. Both the OPA Trustees and Staff are keen that any new services delivered have 'Play' at its heart to ensure that we do not encounter 'Mission Drift' and that everything we do is in line with our Mission Statement and Constitution.

We are currently developing many new projects and services and many of these we will be self-sustaining, income generating projects so that our reliance on contracts, tenders and grants is reduced, thus enabling OPA to shape its own destiny moving forward.

We continue to work hard on minimising all our costs and expenditure so that every available penny is invested into delivering our projects and services.

Although these accounts for 2015/ 16 show a loss, this follows a period of profit in previous years and has enabled us to invest funds into securing the long term future and sustainability of OPA.

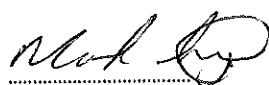
**Independent Examiners**

Critchleys LLP  
 Greyfriars Court  
 Paradise Square  
 Oxford  
 OX1 1BE

**Bankers**

CAF Bank  
 25 Kings Hill Avenue  
 Kings Hill  
 West Malling  
 Kent  
 ME19 4JQ

**Approved by the trustees and signed on their behalf by:**



Mark Lygo  
 Chair

**OXFORDSHIRE PLAY ASSOCIATION**  
**STATEMENT OF TRUSTEES' RESPONSIBILITIES**  
**FOR THE YEAR ENDED 31 MARCH 2016**

The trustees are responsible for preparing the report and accounts in accordance with applicable law and regulations.

Charity law requires the trustees to prepare accounts for each financial year. Under that law the trustees have elected to prepare the accounts in accordance with United Kingdom Generally Accepted Accounting Practice (United Kingdom Accounting Standards and applicable law) and the SORP. The accounts are required by law to give a true and fair view of the state of affairs of the charity and of the profit or loss of the charity for that period. In preparing these accounts, the trustees are required to:

- select suitable accounting policies and then apply them consistently;
- make judgements and estimates that are reasonable and prudent;
- select whether the policies adopted are in accordance with the charity's SORP and with applicable accounting policies.
- prepare the accounts on the going concern basis unless it is inappropriate to presume that the charity will continue in business.

The trustees are responsible for keeping proper accounting records that disclose with reasonable accuracy at any time the financial position of the charity and enable them to ensure that the accounts comply with the Charities Act 2011. They are also responsible for safeguarding the assets of the company and hence for taking reasonable steps for the prevention and detection of fraud and other irregularities.

**OXFORDSHIRE PLAY ASSOCIATION**

**INDEPENDENT EXAMINER'S REPORT TO THE TRUSTEES OF THE OXFORDSHIRE PLAY ASSOCIATION**

**FOR THE YEAR ENDED 31 MARCH 2016**

I report on the accounts of the Oxfordshire Play Association for the year ended 31 March 2016, which are set out on pages 5 to 11.

**Respective responsibilities of trustees and examiner**

The Charity's Trustees are responsible for the preparation of the accounts. The Charity's Trustees consider that an audit is not required for this year (under section 144(2) of the Charities Act 2011 (the 2011 Act), and that an independent examination is needed.

It is my responsibility to:

- examine the accounts under section 145 of the 2011 Act, as amended
- to follow the procedures laid down in the General Directions given by the Charity Commissioners under section 145(5)(b) of the 2011 Act; and
- to state whether particular matters have come to my attention.

**Basis of independent examiner's report**

My examination was carried out in accordance with the General Directions given by the charity Commissioner. An examination includes a review of the accounting records kept by the Charity and a comparison of the accounts presented with those records. It also includes consideration of any unusual items or disclosures in the accounts, and the seeking of explanations from you as trustees concerning any such matters. The procedures undertaken do not provide all the evidence that would be required in an audit and, consequently no opinion is given as to whether the accounts present a 'true and fair view' and the report is limited to those matters set out below:

**Independent examiner's statement**

In connection with my examination, no matter has come to my attention:

1. which gives me reasonable cause to believe that in any material respect the requirements:
  - to keep accounting records in accordance with section 130 of the 2011 Act; and
  - to prepare accounts which accord with the accounting records and to comply with the accounting requirements of the 2011 Act have not been met; or
2. to which, in my opinion, attention should be drawn in order to enable a proper understanding of the accounts to be reached.

  
 Caroline Webster FCA  
 Critchleys LLP

Greyfriars Court  
 Paradise Square  
 Oxford  
 OX1 1BE  
 .....5/7/16

**OXFORDSHIRE PLAY ASSOCIATION**  
**STATEMENT OF FINANCIAL ACTIVITIES**  
**FOR THE YEAR ENDED 31 MARCH 2016**

	<b>Note</b>	<b>Unrestricted Funds £</b>	<b>Restricted Funds £</b>	<b>Total Funds 2016 Total £</b>	<b>Total Funds 2015 Total £</b>
Donations and legacies	3	835	-	835	916
Income from charitable activities		4,400	-	4,400	13,400
Other income		15,243	114,685	129,928	211,215
Income from investments	3	<u>307</u>	<u>-</u>	<u>307</u>	<u>720</u>
<b>Total Income and endowments</b>		<u>20,785</u>	<u>114,685</u>	<u>135,470</u>	<u>226,251</u>
<b>EXPENDITURE</b>					
Expenditure on Charitable Activities					
Charitable activities	5	63,647	106,444	170,091	194,895
Governance costs	5	<u>-</u>	<u>-</u>	<u>-</u>	<u>1,100</u>
<b>Total expenditure</b>		<u>63,647</u>	<u>106,444</u>	<u>170,091</u>	<u>195,995</u>
<b>Net incoming/(outgoing) resources for the year</b>		(42,862)	8,241	(34,621)	30,256
Transfers between funds		<u>1,826</u>	<u>(1,826)</u>	<u>-</u>	<u>-</u>
<b>Net movement in Funds</b>		<u>(41,036)</u>	<u>6,415</u>	<u>(34,621)</u>	<u>30,256</u>
Balances brought forward at 1 April 2015		<u>160,325</u>	<u>9,857</u>	<u>170,182</u>	<u>139,926</u>
Balances carried forward 31 March 2016		<u>119,289</u>	<u>16,272</u>	<u>135,561</u>	<u>170,182</u>

Comparative figures are for information only, representing the activity of the unincorporated charity from which the assets and liabilities were transferred on 1 April 2015.

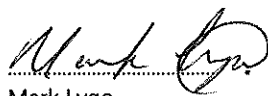
**OXFORDSHIRE PLAY ASSOCIATION**  
**BALANCE SHEET**  
**FOR THE YEAR ENDED 31 MARCH 2016**

	Note	2016 £	2015 £
<b>Fixed Assets</b>			
Tangible assets	2	-	-
<b>Current Assets</b>			
Debtors and prepayments	6	16,425	9,920
Cash at bank and in hand		<u>173,791</u>	<u>229,504</u>
		190,216	239,424
<b>Creditors: amounts falling due within one year</b>	7	<u>(54,655)</u>	<u>(69,242)</u>
<b>Net Current Assets</b>		<u>135,561</u>	<u>170,182</u>
<b>Total assets less current liabilities</b>		<u>135,561</u>	<u>170,182</u>
<b>Funds</b>			
Unrestricted funds		119,289	160,325
Restricted funds		<u>16,272</u>	<u>9,857</u>
		<u>135,561</u>	<u>170,182</u>

**The assets and liabilities were transferred to the CIO, from the unincorporated charity, on 1 April 2015.**

The financial statements were approved by the trustees on

Signed



Mark Lygo  
Chair



Meryl Smith  
Treasurer

**OXFORDSHIRE PLAY ASSOCIATION**  
**NOTES TO THE ACCOUNTS**  
**FOR THE YEAR ENDED 31 MARCH 2016**

**1 ACCOUNTING POLICIES**

**(a) Basis of Preparation**

The financial statements have been prepared in accordance with Accounting and Reporting by Charities: Statement of Recommended Practice applicable to charities preparing their accounts in accordance with the Financial Reporting Standard for Smaller Entities published on 16 July 2014, the Financial Reporting Standard for Smaller Entities (effective January 2015). Assets and liabilities are initially recognised at historical cost or transaction value unless otherwise stated in the relevant accounting policy notes. On 1 April 2015 the assets and liabilities were transferred to a new CIO at book value. Comparative figures represent the activity of the previously unincorporated entity.

- (b)** Revenue grant income is recognised in the accounts of the year to which it relates as is other income to the extent that this is possible. Donations are recognised on a cash received basis.
- (c)** Capital grants are treated as deferred income and credited to the statement of financial activities over the useful economic life of the assets acquired.
- (d)** Resources expended are recognised in the year to which they relate. Irrecoverable VAT is included in the relevant heading. Charitable expenditure comprises those costs incurred by the charity in the delivery of its activities and services for its beneficiaries. It includes both costs that can be allocated directly to such activities and those costs of an indirect nature necessary to support them.
- (e)** Depreciation on assets capitalised is calculated to write off the cost of fixed assets over their estimated useful economic lives.

Computers and equipment-straight line basis over three years

Expenditure on fixed assets above £300 is capitalised.

**2 TANGIBLE FIXED ASSETS**

	<b>Computers and Equipment £</b>
<b>Cost</b>	
Brought forward at 1 April 2015	34,268
Additions during the year	-
Disposals during year	-
As at 31 March 2016	
<b>Depreciation</b>	
Brought forward at 1 April 2015	34,268
Charge for the year	-
As at 31 March 2016	
<b>Net book value</b>	
As at 31 March 2016	-
As at 31 March 2015	-

**OXFORDSHIRE PLAY ASSOCIATION**  
**NOTES TO THE ACCOUNTS (Continued.....)**  
**FOR THE YEAR ENDED 31 MARCH 2016**

<b>3 ANALYSIS OF GRANTS, DONATIONS AND OTHER INCOME</b>	<b>2016</b>	<b>2015</b>
	<b>£</b>	<b>£</b>
Donations and legacies	<u>835</u>	<u>916</u>
<b>Income from Charitable Actives</b>		
<b>Grants</b>		
<b>County council</b>		
Oxfordshire County Council – Infrastructure grant	<u>-</u>	<u>9,000</u>
	-	9,000
<b>District councils – Grants</b>		
Cherwell District Council – Infrastructure	3,000	3,000
West Oxfordshire District Council – Infrastructure	<u>1,400</u>	<u>1,400</u>
	<u>4,400</u>	<u>4,400</u>
<b>Other income</b>		
Playdays	34,698	35,142
NVQ/QCF	52,231	113,831
Other courses	750	-
Outreach	4,550	1,044
Play boxes	1,878	2,512
Payroll Services	-	-
Memberships	-	-
Leys fair	-	16,396
Newsletter	115	100
Take 5	1,054	1,141
Level 3 transitional award	5,510	14,553
Donations	-	916
Rental	8,700	8,250
Premises	-	150
Community Covenant	-	-
Play Conference	-	1,110
Playful Woodlands	4,344	3,014
Finance and Admin	-	9,057
Corporate Partner Scheme	-	165
Play Nature	906	500
Play Stree	-	4,100
Grants – other	-	150
Playful Communities	2,000	-
Community Plaback	<u>13,192</u>	<u>-</u>
	<u>129,928</u>	<u>212,131</u>
<b>Income from investment</b>		
Interest received	<u>307</u>	<u>720</u>
	<u>307</u>	<u>720</u>
	<u>135,470</u>	<u>226,251</u>

**OXFORDSHIRE PLAY ASSOCIATION**

**NOTES TO THE ACCOUNTS (Continued.....)**

**FOR THE YEAR ENDED 31 MARCH 2016**

**4 Employee Costs**

	2016 £	2015 £
Wages and salaries	101,861	100,532
National insurance contributions	<u>11,408</u>	<u>11,266</u>
	<u>113,269</u>	<u>111,798</u>

No trustee nor any persons connected with them have received any remuneration during the year.

No trustee received expenses for travel costs during the year.

The charity employed 8 people during the year (2015:9)

There are no employees earning above £60,000

**5 Cost of charitable activities and governance costs**

	Cost of Charitable Activities £	Totals 2016 £	Totals 2015 £
Play boxes consumables	2,218	2,218	1,990
Playday costs	33,423	33,423	35,153
Finance and Admin	2,552	2,552	3,940
Leys Fair	-	-	16,039
Community covenant	-	-	-
Community playback	10,852	10,852	-
Playful communities	1,080	1,080	-
Playranger project	-	-	-
Therapeutic play	1,440	1,440	-
Play conference	-	-	540
Playful Woodlands	4,295	4,295	2,837
Payroll bureau costs	-	-	-
Tutor and training costs	56,794	56,794	77,446
Newsletter	7,213	7,213	1,608
Outreach	3,113	3,113	1,445
Staff costs	20,648	20,648	19,790
Travel and subsistence	428	428	164
Infrastructure	2,291	2,291	9,351
Premises	14,539	14,539	14,628
Insurance	985	985	1,104
Printing, postage and stationery	1,907	1,907	2,661
Computer expenses	1,014	1,014	384
Telephone	1,136	1,136	1,253
Professional fees	3,107	3,107	3,253
Independent examiner's fee	-	-	1,100
Miscellaneous expenses	98	98	-
Subscriptions	75	75	25
Staff training	883	883	1,259
Bad debts	-	-	25
Grants other	-	-	-
	<u>170,091</u>	<u>170,091</u>	<u>195,995</u>

**OXFORDSHIRE PLAY ASSOCIATION**  
**NOTES TO THE ACCOUNTS (Continued.....)**  
**FOR THE YEAR ENDED 31 MARCH 2016**

	2016	2015			
	£	£			
<b>6 Debtors and Prepayments</b>					
Trade debtors	366	4,420			
Sundry debtors	5,500	5,500			
Prepayments	<u>10,559</u>	<u>-</u>			
	<u>16,425</u>	<u>9,920</u>			
	<b>2016</b>	<b>2015</b>			
	<b>£</b>	<b>£</b>			
<b>7 Creditors and accruals: amounts falling due within one year</b>					
Trade Creditors	-	-			
Payroll taxes	1,881	2,221			
Deposits/deferred income/income in advance	51,674	65,518			
Sundry Creditors	-	403			
Accruals & other creditors	<u>1,100</u>	<u>1,100</u>			
	<u>54,655</u>	<u>69,242</u>			
<b>8 Analysis of Net Assets Between Funds</b>					
	<b>Unrestricted Funds</b>	<b>Restricted Funds</b>	<b>Total</b>		
Fixed assets	-	-	-		
Net current assets	<u>119,289</u>	<u>16,272</u>	<u>135,561</u>		
	<u>119,289</u>	<u>16,272</u>	<u>135,561</u>		
<b>9 Movement on Restricted Funds</b>	<b>Balance 01.04.15</b>	<b>Incoming Resources</b>	<b>Resources Expended</b>	<b>Transfer</b>	<b>Balance 31.03.16</b>
	£	£	£	£	£
L3 transitional	-	5,510	4,384	-	1,126
QCF-	-	52,230	49,873	-	2,357
Take 5	-	1,054	1,603	-	(549)
Short Carse	-	750	934	-	(184)
Playranger Project	-	-	-	-	-
Nature Play	-	906	-	(906)	-
Playday	10,000	32,313	29,645	-	12,668
Playful communities	-	2,000	1,080	(920)	-
Street Play	-	13,192	10,852	-	2,340
Armed Forces Playday	(143)	2,000	2,681	-	(824)
Play woodlands	-	4,344	4,295	-	49
RAF Benson Saturdays	<u>-</u>	<u>386</u>	<u>1,097</u>	<u>-</u>	<u>(711)</u>
	<u>9,857</u>	<u>114,685</u>	<u>106,444</u>	<u>(1,826)</u>	<u>16,272</u>

**OXFORDSHIRE PLAY ASSOCIATION**  
**NOTES TO THE ACCOUNTS (Continued.....)**  
**FOR THE YEAR ENDED 31 MARCH 2016**

**Details of Restricted Funds**

**L3 Transitional**

Funding received for 80% of qualification.

**QCF**

Funding received for 80% of qualification from Oxfordshire County Council which is specific to QCF Training.

**Take 5**

Funding received for 80% of this course.

**Grants – other**

Specific funding received for specific projects. Funds are to be used for this project only and updates are required by funders.

**Play projects**

Similar to 'Grants-other' but specifically directed at 'Play Projects'.

**Playranger projects**

Playranger scheme is run with West Oxfordshire County Council. Funding is received for this project specifically.

**Playday**

Specific funding received for this annual event.

**Playful communities**

Specific funding received for the Playful Community Project. The Funders are invoiced to prevent overspend.

**Promoting play**

Specific funding received to start this project. No expenditure as yet.

The trustees have reviewed the balances on restricted funds and made transfers to unrestricted funds to cover overheads and when the projects are complete.

**10 Operating Leases**

As at 31 March 2016

The charity had annual commitments under non-cancellable operating leases as follows:

Operating leases which expire	2016	2015
<b>Land and buildings</b>		
Within 1 year	12,000	12,000
Within 2-5 years	<u>11,000</u>	<u>23,000</u>
<b>Other</b>		
Within 2- 5 years	<u>-</u>	<u>-</u>

