

One night a man had a dream

He dreamed he was walking along the beach with the Lord.

Across the sky flashed scenes from his life.

For each scene he noticed two sets of footprints in the sand;
one belonging to him and the other to the Lord.

When the last scene of his life flashed before him,
he looked back at the footprints in the sand.

He noticed that many times along the path of his life there was
only one set of footprints.

He also notices that it happened at the very lowest and saddest
times in his life.

This really bothered him and he questioned the Lord about it:

"Lord, you said that once I decided to follow you, you'd walk
with me all the way. But I have noticed that during the most
troublesome times in my life, there is only one set of footprints.
I don't understand why when I needed you most you would
leave me."

The Lord replied:

"My son, my precious child, I love you and I would never leave
you.

During your times of trial and suffering, when you see only one
set of footprints, it was then that I carried you."

Annual Report

August 2015-July 2016



Footprints
in the community

*Stepping out into the Community with
Compassion to meet Local Need*

Westfield Farm

The Green

Dormanstown

Redcar & Cleveland

TS10 5NA

Charity Number 1153121

Mission

Footprints in the Community is a Charitable Incorporated Organisation which aims to establish a variety of services under one umbrella to help address isolation and poverty in the Redcar area and to provide a network of support to local people and organisations.

Trustees during period up to 31 July 2015

Mr Tim Myer - Chair

Mrs Gillian Day - Secretary

Mrs Jane Cavana - Treasurer (until 8.12.15)

Miss Emma Stephenson - Treasurer (from 19.4.16)

Mrs Evelyn Clitheroe (until 30.1.16)

Miss Eileen Cowel (from 12.4.16)

Mr Derek Farrell

Mr Jeremy Faulkner

Ms Beccy McCabe (until 5.8.15)

Mr Dave Stones (from 5.8.15)

Mr Ray Watson (until 24.5.16)



Thank you to all our Trustees, both past and present, who work hard to ensure that Footprints in the Community is run in a professional and open manner.

HELP!



If you would like to volunteer within any of our projects, please contact Carole at volunteer@footprintsinthecommunity.co.uk or telephone 01642 484842

100 CLUB

Why not join our 100 Club for £5 a month ... support the Footprints projects and have the opportunity of winning £50 (1st prize) £30 (2nd prize) and two prizes of £10 each. Draw takes place at Footprints Café on the 2nd Wednesday of each month. For further details and an application form email Janet at 100club@redcararea.foodbank.org.uk



Footprints
cafe

Come and join us for lunch or a light snack - Wednesdays between 11am and 2pm at the Baptist Church on Park Avenue, Redcar - all profits from the Café are fed back into Footprints projects - so by coming and enjoying lunch - you are helping others.



We are really grateful for all donations - if you are a tax payer we can also claim back 25% which makes your donation go that bit further. Please contact Marcella if you want details on how to make a financial donation.



Food donations are essential to the running of the foodbank. Donations can be made at all local libraries, Tesco stores, some Sainsburys stores, Morrisons, Co-op at Marske or any foodbank centres. Also donations of pre-loved, good quality baby clothing/equipment - contact Jan at First Steps.

Manager's Report - Ruth Fox

I'm constantly amazed and humbled by the constant generosity and dedication of local people to the Footprints Projects. Without our volunteers we wouldn't be able to run any of our projects. Without the generosity of the general public and local businesses we wouldn't be able to provide the support we do to people in need. Without the support of local church groups and The Old Co-op in Loftus providing venues for some of our work - we wouldn't be able to host foodbank centres or Footprints Community Café.

We see and hear some really hard and depressing stories through the work we do - lives which have been devastated by loss of jobs, loss of loved ones, marriage break downs, mental health issues, domestic violence, drug and alcohol addictions, debt - to name but a few. BUT we also hear many more stories about how lives have been changed for the better thanks to support and help received through our projects and those of other agencies in the area. We are blessed to be part of this.

My aims for the coming year are to build on what we already do - and to bring in some much needed finances through funding applications and fund raising events. We also aim to make our projects 'Dementia Friendly' - look out for our dementia friend sessions.

Thank you all so much for your continued support .

Ruth Fox
Manager



For further information about Footprints in the Community,
please contact
ruth@footprintsinthecommunity.co.uk
Tel; 01642 484842

Chair's Report

Tim Myer



With the continuing pressure on Redcar's community, it's been an eventful year for 'Footprints'.

We still find much to encourage us though.

Genuinely heartening is the feedback, which should give us grounds for confidence. This was expressed by one of our clients, that they had actually been listened to. *'The first time anyone has asked me about my life'*, said one.

We continue to shape our priorities around the themes of compassion for our local area. There has been a great deal of progress, as you will read in this report

We experience today an increasingly harsh regional environment, with a complicated picture. But there's nothing complicated about its consequences: Over 3000 people used 'Redcar Foodbank' in the last 12 months. Over 100 individuals were helped by the 'Redcar Beacons'. 'First-steps' continues to develop.

This is the context in which we launched our new 'Next-step shop' in Redcar, our 'Lunch box' scheme and our 'Men's shed' project. It is exciting to consider the possibilities that are opening up to 'Footprints'.

None of this amazing work would be possible without our supporters, partners and funders.

I'd like to say thank you to my fellow trustees and the dedicated project managers, to all our staff and volunteers – you are the hidden treasure that again and again enables us to do more than we thought we could!

So a year of pressures, yes – but also a year when we have discovered how much can be achieved by commitment in times of challenge.

It is a pleasure to accompany you on this journey with Footprints in the Community.

Warmest regards, Tim Myer



Open every Wednesday between 11am and 2pm, Footprints Community Café

works alongside Redcar Area Foodbank and caters for the paying public and provides a free meal for Foodbank clients. All profits from the Café are fed back into the Footprints Projects.

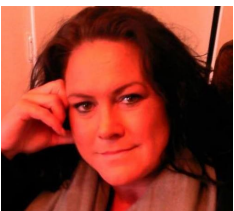
Six volunteers, under the supervision of Kat, the Café Manager, spend between two and five hours per week working hard in the kitchen and serving customers.

This year has seen a 9% increase in takings, made possible by increasing the provision of a hot meal from once a month to weekly. The café has been successfully promoted on social media with its own Facebook page (Footprints Community Café).



Other highlights include the award of a 5 star hygiene rating and the successful completion of their Food Hygiene Level 2 certificate by all our volunteers. Our Christmas Lunch proved to be even more popular than last year with over a hundred meals prepared.

Future plans include offering a Sunday lunch once per month, a poster advertising campaign and we have also commenced a new outside catering facility which has received excellent feedback although it is still in the developmental stage.



For further information about Footprints Cafe, please contact Kat on info@footprintsinthecommunity.co.uk
Tel; 01642 484842

My Donate

Treasurer

For further information about Finance please contact Marcel-
la at admin@footprintsinthecommunity.co.uk
Tel; 07443 539164

Finances and Funding

We are so fortunate that individuals, organisations and funders have been generous in their giving and support of Footprints in the Community and it's projects. During this period we have been blessed by donations and gifts from the following:

Coast & Country Housing
Eston Dental Practice
North East Nursing and Care Services
Redcar & Cleveland Borough Council
Seaview Restaurant
SK Foods
Tesco's
Awards for All
Community Health Fund
Northern Power Grid
Provincial Grand Charity

Some fundraising has been taken over the year via general collections eg bag packing at supermarkets, a concert and sponsored sea dips! We have also submitted several funding applications which have been successful eg Awards for all and the Northern Power Grid. Profits from the Footprints café and the 100 Club are fed back into the projects.

Plans for the Future

The Trustees aim to consolidate the projects ensuring adequate finances, staffing and volunteers to provide an excellent level of service.

Footprints projects will continue to raise funds through sponsored events and activities and applications to charitable funders. There is a sponsored abseil planned and some larger funding applications will be submitted with the aim of securing the projects for the coming years.



Following the success of our Lunch Box pilot project in South Bank in August 2014 we extended the Project in 2015 to include the Redcar area.

It was evident that families struggled to make ends meet during the summer school holidays and the Lunch Box Project was a great benefit.

Three times a week children and their parent(s)/carer came along to one of our two venues - South Bank Baptist Church or East Cleveland Baptist Church in Redcar. At the first session the children received a lunch box which they brought back with them each time they attended for it to re-filled with a choice of sandwich, snack, fruit and drink.

While their packed lunch was being prepared there were lots of fun activities for the children to do - craft activities, puzzles, games and quizzes. The children loved it ... and so did their parents/carers! The project was completely free of charge to the families.



Over the course of the month over 60 children attended and 466 packed lunches were provided - more than double that of the previous year. 100% of the feedback was excellent!

Once again we really appreciate the help from Eston Dental Practice who have financed the project in South Bank.



For further information about the Lunch Box Scheme,
please contact Ruth on
ruth@footprintsinthecommunity.co.uk
Tel; 01642 484842



Now in its fourth year Redcar Area Foodbank continues to provide emergency food parcels to people in crisis who are referred by approximately 120 referral agencies working closely with us to get help to people in need.

We currently have 7 foodbank centres across the area, who always offer a friendly welcome to everyone requiring a food parcel. Clients also receive some kind of a free meal while they attend the foodbank which can be a cuppa and a cake or even a two course meal! During their short time with us we also offer advice on how to get help for their situation and can signpost them to other agencies for help.

Currently clients receive 3 or 4 vouchers in a crisis, each parcel containing sufficient food for 3 days.

During the period 1 August 2015 - 31 July 2016 a total of 2362 vouchers were issued by partner agencies; the total number of clients fed were as follows:-

Adults	Children	Total
3295	1722	5017

This past year has been a struggle to many due to the closure of the Steel Works and redundancies from the knock on affect to other companies. Some of these people have had to use our foodbanks but after finding work have returned to us to donate back for the help and support they received when the going was tough.

It is so good to hear their stories and the good news of new jobs for them. It makes the work we do so worth while.



For further information about Redcar Area Foodbank,
please contact Helen at: info@redcararea.foodbank.org.uk

Tel; 01642 484842
Mob; 07927 365559

The Future

We need to capitalise on the opportunity to work with local supermarkets by ensuring that we always have volunteers willing to support us with the food collections within those supermarkets.

As you know, Redcar Beacons do an amazing job but they really do need more volunteers. They provide a vital service which we need to expand through increased volunteer recruitment.

To help volunteers in their role we will continue to offer relevant training and keep them up to date with what is happening within Footprints.

We are always aware how fantastic our volunteers are but just in case you needed more proof, we have been awarded Volunteer Team of the Year 2016 by RCVDA.

We held a Volunteer Thank You Party in April which was a great success and attended by approximately 100 volunteers. Great quizzes and pie and peas! We hope to make this an annual event.

Whatever role you have in the organisation you really do make a difference to people's livesThank You





Volunteers are the lifeblood of Footprints in the Community. Without them we would not be able to support people in our community.

Our database shows that 160 people volunteer for us with many having more than one role. 15 new volunteers joined us during Feb-July, helping at various projects. I am very pleased that the trustees agreed to recruit volunteers under the age of 18, not only will this secure the future of our projects but introduces younger people to the benefits of volunteering. Due to the commitment of our volunteers we have very little turnover of people leaving. However, this means we have been able to refer volunteers who we couldn't place to other charities, strengthening our partnership working.

We have also introduced a call out list for all projects. This will help the Team Leaders greatly and give volunteers a chance to spend time at another project.



For further information about Volunteering, please contact Carole at volunteer@footprintsinthecommunity.co.uk

Thank You!

We continue to say “**Thank You**” to all those who regularly make donations of both food and money to enable food-bank to continue. Throughout the period we have taken in a total of over 40 tonnes of food. (43 tonnes have been distributed!)



A huge “**Thank You**” once again to all those volunteers helping every week of the year.

Without you Foodbank would not exist.

Food Bank Centres

Monday -

St Hilda's Church, Redcar
Baptist Church, South Bank

Wednesday -

Baptist Church, Redcar
Baptist Church, South Bank

Thursday -

St Peter's Church, Redcar
Old Co-op Community Bldg, Loftus

Friday -

All Saint's Church, Dormanstown
St George's Church, Normanby

Shopping List

Milk (UHT)
Sugar
Fruit Juice (long life)
Tinned Tomatoes
Tinned Sponge Puddings
Tinned Rice Puddings
Biscuits/Snacks
Tea Bags/Instant Coffee
Instant Mash Potato
Tinned Vegetables
Tinned Meat/Fish
Jam
Tinned Fruit



Since November 2014 Redcar Beacons has provided a caring presence on the streets of Redcar between 10pm and 3am on a Friday and Saturday night, giving help and support, first aid, water and flip flops as needed. The volunteers, working closely with emergency services, are dedicated to ensuring the safety and wellbeing of those people out having a good time during the night time economy and have built up good relationships with the general public, door staff and emergency services.

Volunteer numbers fluctuate but we currently have 15 fully trained volunteers and 6 who are awaiting some elements of training. About half of them are over 50 years of age, just 7 are men and they all come from different walks of life but most are employed ... the main reason they do this is because they care about others and Redcar.

Below is a table of activity for the period. ...

Nights patrolled	74	Volunteer Hours	1606
First Aid Administered	25 times	Helped in other ways	71 people
Witnessed Violence	30 incidents	Police called	5 times
Ambulance called	7 times	Gave water	36 people
Gave Flip Flops	86 women	Called taxis	12 times
Reconciled friends	6 times	Met homeless people	4 times
Swept up broken	959 times	Collect general rubbish	524 bags



For further information about Redcar Beacons, please contact
Anne at info@RedcarBeacons.co.uk
Tel; 07719 447112

Next Step Shop

OPEN



Next Step Shop is a members shop - often the 'next step' for foodbank clients and those who are struggling financially. People apply to be a member and their application is supported by an agency.

For £2 a week members can choose 10 items of food from the shelves, giving a saving of approximately £10 a week.

Next Step Shop was part of a pilot project funded by Awards for All and opened in September 2015. The pilot scheme/funding came to an end at the beginning of February 2016 but we have fortunately been able to keep the Shop running.

A small team of dedicated volunteers cover the two days opening. They look after the members with compassion and empathy, quite often it's more like a drop in centre for advice and chat whilst getting their shopping.

Food is sourced from Fare Share and topped up with additional purchases and more recently donations from Sainsburys.

Membership is currently just over 100, however due to the transient nature of some of the members there are approximately 30 people using the shop each week. We hope to see this figure increase over the coming months.

Evelyn took on the role of Volunteer Manager in June 2016 and is doing a great job - thanks also to Carole and Gaynor for their hard work in getting the shop established.



For further information about Next Step Shop, please contact
Evelyn at nextstep@footprintsinthecommunity.co.uk
Tel;





Men's Shed is a larger version of the typical man's shed in the garden - a place where he feels at home and pursues practical interests with a high degree of autonomy. Our Men's Shed offers this to a group of such men where members share the tools and resources they need to work on projects of their own choosing at their own pace and in a safe, friendly and inclusive venue.

Following a successful Awards For All application, we opened the Redcar Men's Shed as a pilot project of 6 months in October 2015.



We were then fortunate enough to win just short of £50,000 through the People's Project in March 2016 enabling us to open our second Men's Shed in Skelton. Thanks to all who voted for us!

Whilst most of the men work on their own projects, we have also been 'commissioned' to build benches, planters, notice boards etc for the local council and community groups.

Men have told us what a difference being able to attend "The Shed" has made to their lives - giving them a purpose and a reason to get up in the mornings; even helping with physical ailments; aches and pains.

We hope to see membership numbers increase and extend opening hours over the coming months.



For further information about Men's Shed, please contact Geoff at mensshed@footprintsinthecommunity.co.uk

Tel; 07526 994468 or pop into the Shed during opening hours



Relationships with people such as door staff working in the night time economy have developed. The policing of the Town Centre is on a response basis so we do not see a lot of them but when we do they are happy to chat and often appreciate lollipops as do many people in the town!

Redcar Beacons have also been involved in helping at several other events throughout the year such as the Santa Parade; Christmas Lights Switch-on; Carol singing and Armed Forces Day. A musical concert and bag packing event helped to raise funds as well as a couple of nights collecting in local public houses. Donations have also come in from the PCC, Darlington Building Society, Marske & Redcar Methodist Church and the Rotary Club. The general public are also very generous with their praise & appreciation of what we do as well as their money.

We were all very saddened at the tragic death of one of our regular volunteers, Lynne Freeman. This incident impacted greatly on all of us and the local community so we held some prayer & support meetings and a public event in the town on 30th April, entitled 'The Lights will Guide you Home.'

As well as the practical care we give, we regularly listen to people who are lonely and depressed - some are suicidal; we offer a listening ear and prayer for those people. The figures & experiences we have had are testament to the fact that we are making a difference and volunteers get a great deal of satisfaction from knowing this. The public are

always generous with their praise for what we do, giving us hugs, hand shakes & high 5's. One young man said 'you old gadgies have morals & that is what we need!'



We are honoured once again to be voted the winners of the Community Safety Award by RCVDA.



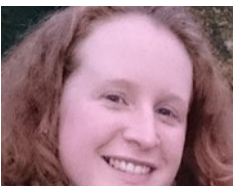
First Steps is the provision of baby equipment and/or clothing packs to families who are struggling to get the baby essentials together.

This time last year we had recently relaunched our service having had a major sort out operation in the warehouse, and were just beginning to make links with local family service providers, inviting them to refer their families to us.

Since then, First Steps has really taken off, and we now get regular referrals from Community Midwives, Health Visitors, Sure Start, Social Services, Teenage Pregnancy, Thirteen Care, Foundation Refuge and more. Partnering with these services has been vital, as their staff have existing relationships with vulnerable and needy families – visiting and working with them in their homes where they can discuss and accurately assess their needs.

In the warehouse we have a small but dedicated team of Jan, Sue and Naomi, who prepare referrals, process donations, check and test equipment, make up clothing / care packs and generally keep things going. Recently we've been down to two as Naomi has taken some time out to give birth to her twin boys – Congratulations Naomi, and well done!

We also have a team of great people who continue to wash and sort donated clothing and bedding at home, ready for us to prepare into packs. Thank you to all who do this for your time and efforts. It's very valuable. Also since a few months ago we have been blessed with the services of Lynn, our volunteer driver, who regularly collects donated equipment at short notice so that we can make the most of offers and sometimes get items out to families urgently.



For further information about First Steps, please contact
Jan at firststeps@footprintsinthecommunity.co.uk

The majority of the items we prepare are collected by the agency that made the referral and taken to the families on our behalf. Occasionally though, we've been able to deliver items ourselves and meet the families we are working for. This contact is important for us as it keeps the project personal and allows us a chance to see for ourselves the difference it's making.

Here are some encouraging numbers for the past year:

40 local families in need have received items from First Steps, including:

- 31 clothing packs,
- 11 bedding packs,
- 9 newborn care bundles,
- 9 pushchairs,
- 9 baby baths,
- 8 Moses baskets,
- 6 cots,
- 4 highchairs and much more.



We have received lots of donations from generous members of the public – 54 items of essential equipment, and 476kg of weighed donations including clothing, bedding, nappies, and toiletries etc.

Thank you to everyone who has given so generously to this project. We want you to know that your donations have gone to good homes – families and children who really needed them, some who waited months to have those essential items, and who were over the moon to receive them.



Footprints in the Community
Charity Registration no 1153121

Financial Statements
For the year ended
31 July 2016

Westfield Farm, The Green
Dormanstown, Redcar
Cleveland, TS10 5NA

Legal and Administrative Information

Name: Footprints in the Community

Charity No: 1153121

Trustees: Mr Tim Myer - Chair
Miss Emma Stephenson – Treasurer – from 12.4.16
Mr Jeremy Faulkner
Miss Eileen Cowel – from 12.4.16
Ms Gillian Day
Mr Derek Farrell
Mr Dave Stones – from 5.8.15
Mrs Evelyn Clitheroe – resigned .1.16
Miss Beccy McCabe – resigned 15.9.15
Mrs Jane Cavana – resigned 9.12.15
Mr Ray Watson – resigned 24.5.16

Registered Address: Westfield Farm
The Green
Dormanstown
Redcar
Cleveland
TS10 5NA

Bankers: Barclays plc
Redcar Branch

Independent Examiner: Kate Tully FMAAT FCIE
21 Peartree Bungalows
Blackhall Mill
Newcastle Upon Tyne
NE17 7TW

Contents

1.	Structure and Governance	Page 4
2.	Trustees Report	Pages 4 to 5
3.	Independent Examiner's Report	Page 6
4.	Statement of Financial Activities	Page 7
5.	Balance Sheet	Page 8
6.	Notes to the Accounts	Pages 9-12

Structure and Governance

The charity is controlled by its governing document, a constitution and is a Charitable Incorporated Organisation (CIO)

Trustees' Report

Objectives and Activities for the Public Benefit

To relieve persons in the area of Redcar and Cleveland who are in condition of need, hardship or distress (beneficiaries) by providing practical support, information, guidance and in such other ways as the trustees from time to time see fit.

Achievements and Performance

We continue to provide services to the local community and shape our priorities around the theme of compassion for our area, with the aim of helping to improve lives. We have launched three new projects during this financial year – our Lunch Box Project, providing free packed lunches throughout the month of August, our Next Step Shop which is the next step for many of our foodbank clients, and our Men's Shed – a place where men can work on their own projects in a safe, friendly and inclusive venue. This now takes our projects up to seven with 5 paid members of staff (4 part time and 1 full time).

We are blessed by so many volunteers who willingly give of their time to help deliver the various projects - we couldn't provide the services without them. We are also blessed by the financial donations of individuals, companies and funders; we thank them for their support. We continue to fundraise through funding applications and through our community café and 100 club.

So a year of pressures, yes – but also a year when we have discovered how much can be achieved by commitment in times of challenge.

The trustees/directors have considered the guidance produced by the Charity Commission on the provision of public benefit and they confirm that public benefit has been provided by the range of activities as described below.

Financial Review

The Charity's financial results for the year are shown in the Statement of Financial Activities (SOFA). At the end of the financial year the total balance carried forward was £109,999 of which £69,000 was restricted funds, £5,609 designated funds and £35,390 was unrestricted.

Risk Management

All major risks are identified through a risk assessment process and systems have been put in place to mitigate these risks. The Trustees recognise the uncertainty over future income as the main risk facing the Charity. Grants are sought from a variety of funders as opportunities arise to reduce the dependence on any one source of funding.

Reserves Policy

Though there is no policy in place at this time, steps are being taken to ensure it will be up and running before the end of the next financial year.

Footprints in the Community

Plans for the Future

The trustees aim to consolidate the projects ensuring adequate finances, staffing and volunteers to provide an excellent level of service. Footprints in the Community will continue to raise funds through activities and applications to charitable funders.

It is planned to adapt some of the services to ensure they are 'dementia friendly' – this will be especially significant to the Footprints Community Café. A monthly Sunday lunch and development of outside catering is also a possibility for developments over the coming months.

Approved by the members and signed on their behalf:

Name: Tim Myer

Signature: *T Myer*

Date: 16th November 2016

Footprints in the Community

Independent Examiners Report

Report to the trustees of Footprints in the Community on Accounts for the year ended 31 July 2016 set out on pages 7 to 12.

Respective responsibilities of trustees and examiner

The trustees are responsible for the preparation of the accounts. The trustees consider that an audit is not required for this year under section 144(2) of the Charities Act 2011 (the 2011 Act) and that an independent examination is needed. The charity's gross income does not exceed £250,000.

Having satisfied myself that the charity is not subject to audit under company law and is eligible for independent examination, it is my responsibility to:

- examine the accounts under section 145 of the 2011 Act;
- to follow the procedures laid down in the general Directions given by the Charity Commission under section 145(5)(b) of the 2011 Act; and
- to state whether particular matters have come to my attention.

Basis of independent examiner's report

My examination was carried out in accordance with the general Directions given by the Charity Commission. An examination includes a review of the accounting records kept by the charity and a comparison of the accounts presented with those records. It also includes consideration of any unusual items or disclosures in the accounts, and seeking explanations from you as trustees concerning any such matters. The procedures undertaken do not provide all the evidence that would be required in an audit and consequently no opinion is given as to whether the accounts present a 'true and fair view' and the report is limited to those matters set out in the statement below.

Independent examiner's statement

In connection with my examination, no matter has come to my attention:

- (1) which gives me reasonable cause to believe that in any material respect the requirements:
 - to keep accounting records in accordance with section 130 of the Charities Act; and
 - to prepare accounts which accord with the accounting records and to comply with the accounting requirements of the Charities Act have not been met; or
- (2) to which, in my opinion, attention should be drawn in order to enable a proper understanding of the accounts to be reached.

Kate Tully FMAAT FCIE

Date 5th December 2016

Signed



Kate Tully is a Fellow Member of the Association of Charity Independent Examiners and a Fellow Member of the Association of Accounting Technicians

Footprints in the Community
Statement of Financial Activities
for the year ended 31 July 2016

	Note	Unrestricted Funds £	Designated Funds £	Restricted Funds £	Total 15-16 Funds £	Total 14-15 Funds £
Incoming Resources	2					
Incoming Resources from generated funds						
<i>Voluntary Income</i>		31,061	298	84,811	116,170	90,194
<i>Activities for Generating Funds</i>					0	0
<i>Investment Income</i>					0	0
Incoming Resources from charitable activities			9,429	700	10,129	6,412
Other Incoming Resources		1,631			1,631	0
Total Incoming Resources		32,692	9,727	85,510	127,930	96,607
Resources Expended	3					
Costs of generating voluntary income					0	0
Fundraising Trading Costs						
Charitable activities		32,809	6,153	58,518	97,480	60,273
Governance Costs		400			400	450
Other resources expended					0	0
Total Resources Expended		33,209	6,153	58,518	97,880	60,723
Net incoming/outgoing resources before transfers		(517)	3,574	26,993	30,050	35,884
Transfers between funds		700		(700)		
Net movement in funds		183	3,574	26,293	30,050	35,884
<i>Balance b/f from previous year</i>		35,207	2,035	42,707	79,949	44,064
Total funds carried forward		35,390	5,609	69,000	109,999	79,949

Footprints in the Community

Balance Sheet

as at 31 July 2016

	Note	Total 15-16 Funds £	Total 14-15 Funds £
Fixed Assets:			
	<i>Tangible Assets</i>		
Total Fixed Assets:		0	0
Current Assets			
	<i>Debtors</i>	0	0
	<i>Food Stock</i>	15,248	15,978
	<i>Current Account</i>	95,151	67,971
	<i>Cash in Hand</i>	0	0
Total Current Assets		110,399	80,398
Liabilities			
	<i>Creditors: Amounts falling due within one year</i>	(400)	(450)
	<i>Creditors: Amounts falling due after one year</i>	0	0
Total Assets less total liabilities		109,999	79,949
The Funds of the Charity:			
	<i>Restricted funds</i>	69,000	42,707
	<i>Designated funds</i>	5,609	2,035
	<i>Unrestricted funds</i>	35,390	35,207
TOTAL CHARITY FUNDS		109,999	79,949

Approved by the members and signed on their behalf:

Name: Tim Myer

Signature: *T Myer*

Date: 16th November 2016

Footprints in the Community
Notes to the Financial Statements
for the period ending 31 July 2016

1 Accounting Policies

Basis of Preparation

These Financial Statements have been prepared on the basis of historic cost in accordance with:

- with the Financial Reporting Standard for Small Entities (effective from April 2008) of the Companies Act 2006; and in accordance with
- Accounting and Reporting by Charities – Statement of Recommended Practice (SORP 2005)
- and with Accounting Standards;
- and with the Charities Act 2011

Incoming Resources

These are included in the Statement of Financial Activities (SOFA) when:

- the charity becomes entitled to the resources;
- the trustees are virtually certain they will receive the resources; and
- the monetary value can be measured with sufficient reliability

Donations are only included in the SOFA when the charity has unconditional entitlement to the resources.

Resources Expended and Liabilities

Resources expended have been analysed using a natural classification.

Liabilities are recognised as soon as there is a legal or constructive obligation committing the charity to pay out resources.

Governance costs covered legal and accountancy fees.

Support costs include central functions and have been allocated to activity cost categories on a basis consistent with the use of resources.

Taxation

The charity is exempt from corporation tax on its charitable activities.

Footprints in the Community

2 Funds

The Charity has three funds, an unrestricted general fund, a designated fund for expenditure specified by the trustees and a restricted fund used for expenditure specified by the funder: hence all movements on each fund are disclosed.

Restricted Funds

Fund Name	Bal. b/f	Income	Expenditure	Transfers	Bal. c/f
<i>Restricted Funds</i>					
First Steps	(1,008)	1,271	(459)		19,557
Lunch Box	1,069	2,700	(1,491)		2,278
Redcar Beacons	1,671	4,137	(3,115)		2,692
NS Shop	3,932	4,010	(8,701)		(760)
Foodbank General Fund	30,361	21,023	(21,708)		29,676
Mens Shed P P	0	49,975	(15,342)		34,633
Mens Shed	6,682	2,395	(7,727)		1,350
Total	42,707	85,510	(58,543)	0	89,427
<i>Designated Fund</i>					
100 Club	975	2,840	(1,210)		2,605
Café	1,060	6,887	(4,917)		3,030
	2,035	9,727	(6,127)	0	5,635
<i>Unrestricted Funds</i>					
Footprints General Fund	21,729	32,692	(33,209)	13,478	34,690
Public Health Grant	13,478	0		(13,478)	0
	35,207	32,692	(33,209)	0	34,690
Total of All Funds	79,949	127,930	(97,880)	0	109,999

Fund Name	Type	Purpose and Restrictions
First Steps	Restricted	To help provide baby clothes and equipment for children up to 3 yrs to those in need
Lunch Box	Restricted	Annual scheme to provide lunch to children during the summer holidays
Redcar Beacons	Restricted	Street Angels Project to provide a safe environment around Redcar Centre at the weekend, late at night
NS Shop	Restricted	A membership shop helping those who struggle financially to purchase food
Mens Shed	Restricted	A place for men to get together, to share tools and resources they need to work on projects.
Mens Shed PP	Restricted	A place for men to get together, to share tools and resources they need to work on projects.
Foodbank General Fund	Restricted	Provide emergency food parcels
Café	Designated	A community café open to the general public.
100 Club	Designated	A lottery draw open to the general public membership entitles entry to a monthly draw with cash prizes

Footprints in the Community

Analysis of Income and Expenditure 2015-16

Incoming Resources

Voluntary Income	Unrestricted	Designated	Restricted	Total
Grants	25,000		49,975	74,975
Donations	6,061	298.05	34,836	41,195
	31,061	298	84,811	116,170

Other Income

	1,631			1,631
	1,631	-	-	1,631

Income from Charitable Activities

Sales		6,689		6,689
Membership		2,740	700	3,440
	-	9,429	700	10,129

Total Incoming Resources

	32,692	9,727	85,510	127,930
--	--------	-------	--------	---------

Resources Expended

Cost of Charitable Activities	Unrestricted	Designated	Restricted	Total
Salaries and NIC	29,093	3,227	15,945	48,266
Insurance	200		1,298	1,498
Fundraising Costs			1,290	1,290
Licences		20	360	380
Food		2,462	5,616	8,078
Uniforms	16	173	294	483
Travel and Subsistence	599		2,938	3,537
Volunteer Expenses	40	87	257	385
Office Costs	581		2,002	2,582
Phone/Radio	390		1,501	1,891
Advertising			1,476	1,476
Clients			511	511
Health & Safety			232	232
Events			269	269
Training	18		770	788
Repairs/Maintenance			28	28
Network Fee			584	584
Equipment	122	183	11,123	11,429
Rent	1,462		7,646	9,108
Utilities	102		2,753	2,855
Advice Services			1,020	1,020
Miscellaneous	187		604	790
	32,809	6,153	58,518	97,480

Governance Costs

Independent Examination Fees	400			400
				0
	400	0	0	400

Total Resources Expended

	33,039	6,153	58,518	97,880
--	--------	-------	--------	--------

Footprints in the Community

Support Costs Support Cost Type

	Fundraising Activity £	Charitable Activity £	Governance Activity £	Total Cost £
Salaries and NIC		48,266		48,266
Insurance		1,498		1,498
Prizes		1,290		1,290
Lottery Licence		380		380
Food		8,078		8,078
Uniforms		483		483
Travel and Subsistence		3,537		3,537
Volunteer Expenses		385		385
Postage/Stationery/Telephone		2,582		2,582
Printing/Photocopying		1,891		1,891
Advertising		1,476		1,476
Clients		511		511
Health & Safety		232		232
Events		269		269
Training		788		788
Equipment/Repairs		28		28
Network Fee		584		584
Toys		11,429		11,429
Rent		9,108		9,108
Utilities		2,855		2,855
Advice Services		1,020		1,020
Miscellaneous		790		790
Independent Examination Fee			400	400
Total	-	97,480	400	97,880

3 Salaries/Wages

	Unrestricted £	Designated £	Restricted £	2015-16 Total £
Wages and Salaries	29,093	3,227	15,945	48,266
Other Costs				-
	29,093	3,227	15,945	48,266

4 part time and 1 full time employees were employed during this period.

4 Debtors

There are no debtors for this year.

5 Creditors: due within 1 year

Details	Amount
Independent Examination Fee	400
TOTAL	400