



Bournemouth Hospital Charity

Annual report 2015/16



DONATE



FUNDRAISE



VOLUNTEER



Chairman's Welcome

I am delighted to report a very positive year for Bournemouth Hospital Charity.

The charity's core objective is to support projects and purchase medical equipment that improve the patient experience, alongside this it funds investment in our staff through development and training. The highlight was the Royal opening of the new Jigsaw Building; the building provides state of the art facilities and equipment to provide a one stop outpatient and day care unit for oncology, haematology and women's health. Funded by donations, money raised through two Jigsaw Appeals and NHS investment the building provides more space for rapidly expanding outpatient and day care treatments. Central to the patient experience is the morale of our staff and the charity was pleased to support a range of staff initiatives and to sponsor the annual Trust Pride awards, at which the community, staff and charity were able to celebrate the achievements of the staff and show appreciation for the exemplary care provided to our patients.

Following the Charity's move away from being an appeal led charity a new five year strategy has been approved by the charity trustees. The strategy focuses on developing and expanding activity to increase charitable income to better support all areas within both Hospitals. In addition to developing this strategy the charity has also put in place more robust business planning, reporting and risk management processes, reviewed its policy on reserves and put in place rigorous arrangements to ensure charitable funds are wisely and consistently

committed to the most worthy causes.

All of those involved in the work of the charity should be proud of their achievements during 2015/16. I would like to thank all our donors and supporters, the many hard working members of the public and volunteers for their support, dedication and commitment to the charity and my fellow committee members for their contributions throughout the year. Without their dedication and hard work we would not be able to support the many good causes that allow the patient experience to be improved.

I am confident that with its new five year strategy and management arrangements the charity is soundly based and will remain committed to improving and enhancing the care and treatment of patients of our Trust. From a personal point of view it has been a privilege to chair the Trust charity.

Can I take this opportunity to thank Debbie Anderson and her fundraising team for their dedication and hard work without which the good deeds of the charity would not be possible.

I would also like to thank our outgoing Chair, Bill Yardley, for his time on the charitable funds committee.

Your continuing support remains vitally important for the future of the charity and the patients and staff of the Trust. Thank you in anticipation.



Alex Jablonowski

Overview

Bournemouth Hospital Charity raises funds to enhance the care and treatment of patients accessing NHS services at the Royal Bournemouth and Christchurch Hospitals by fundraising to provide additional facilities, state of the art equipment and supporting NHS staff development to enable the Trust to provide the excellent care we would expect for our own families.

The charity aims to make a difference to every patient and every condition that is treated at our hospitals above and beyond that which can be provided through NHS funding.

Money is raised to:

- Enhance patient care and comfort
- Provide state of the art and extra equipment and facilities
- Invest in our experienced staff to support improved patient health and well-being

We do this by raising funds through a variety of fundraising activities including:

- Organising fundraising events
- Community activities
- Promoting legacies and in memory giving
- Applying for grants
- Working with local businesses
- Effectively managing the charity funds and investing wisely
- Trading

Working with the community we aim to speed up patient treatment, reduce patient anxiety, aid quicker recovery, provide less intrusive treatment and improve the health and well-being of both patients and staff within the Royal Bournemouth and Christchurch Hospitals.

TOTAL RAISED
£1,509,000

**The charity's income supports
services and new equipment
across the hospital supporting**

374,000 **&** **112,000**
outpatients inpatients
who accessed services during the year

OVER 1700 PEOPLE have been
involved in
raising funds
for the charity

57 businesses have
supported the
charity

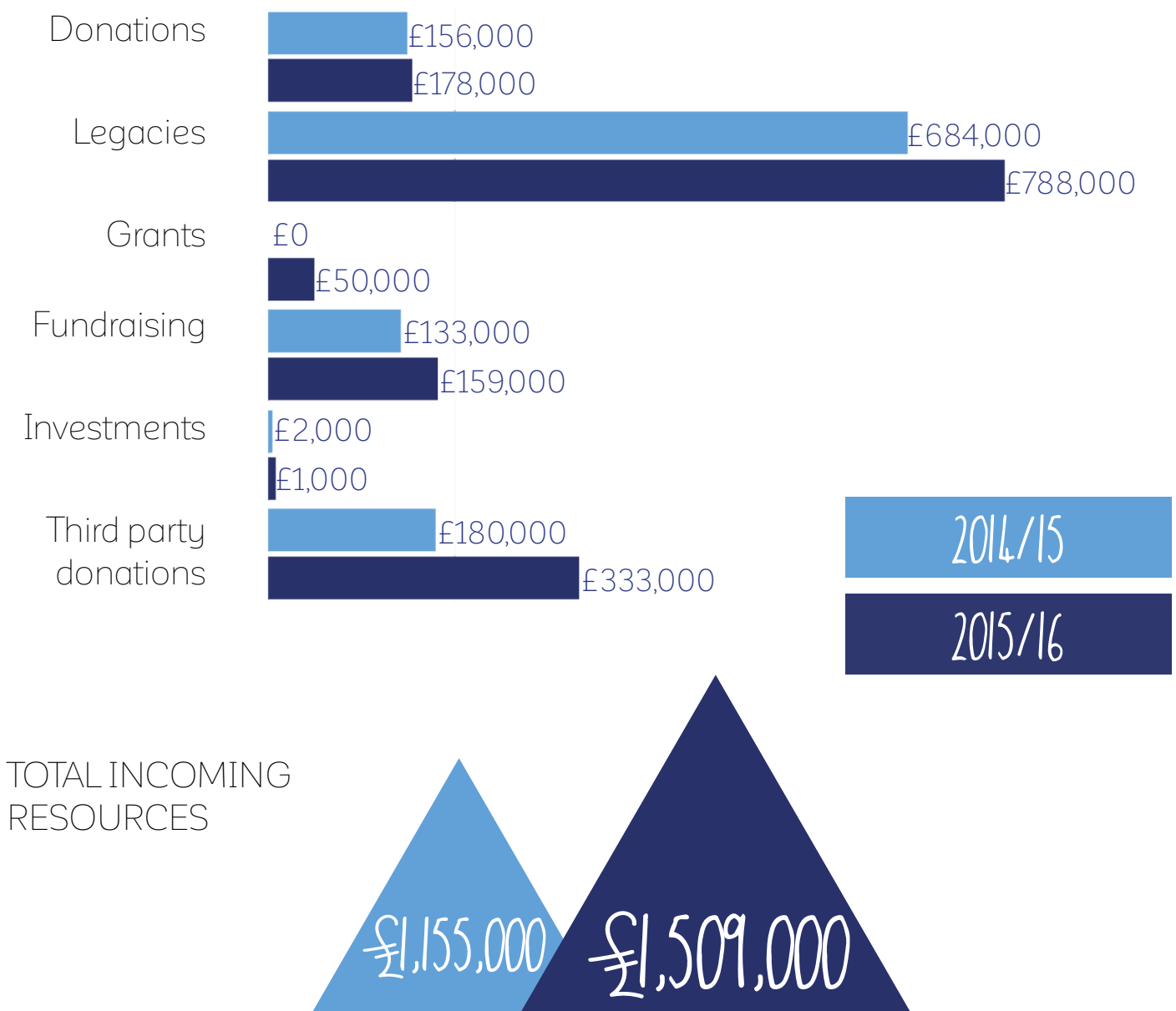
18 community groups
have supported the
charity

Breakdown of charitable spend:



How we raised the income

The overarching objective of the Bournemouth Hospital charity is to raise as much money as possible to continue to support the welfare of hospital patients and staff. This year we have been extremely busy raising much needed funds in a variety of ways:



We could not raise this money without all our supporters to whom we are very grateful

1451 Event participants

42 Businesses supported the charity financially

33 Individual fundraisers

18 Community groups supported the charity

15 Businesses supported by providing gifts in Kind

How we spent the money

This year the charity has spent £1.49 million to improve care and treatment across both the Royal Bournemouth and Christchurch hospitals. A further £324,000 of funding has been committed but not yet spent.

The charity seeks to invest in key areas such as providing state of the art medical equipment, providing patient and family support and helping to transform our hospitals into more comfortable, practical and welcoming environments.

OVER ~~£~~745,000
has been spent on
**patient welfare
and amenities**
including:

- Funding of a website for people living with and beyond colorectal and breast cancer to access up-to-date information about diet, exercise, support services in your areas and events
- TV's for orthopaedic outpatients area
- Yoga classes for cancer patients
- Christmas presents for inpatients
- Access to WiFi in the Oasis café for patients, visitors and staff and on wards 10 and 11 for long stay cancer patients
- TV for children's waiting room in the eye unit
- Dyson fans for Ward 2

A FURTHER **£467,000**

has been invested in

state of the art medical equipment

including:

- Breast ultrasound machine for use in the Jigsaw Building
- Template biopsy machine – to help, improve the speed and accuracy of diagnosing prostate cancer and reduce infection rates.
- Corneal instruments to support corneal Transplant surgery in the eye unit

The charity has also supported

staff training and welfare

throughout the year through a range of activities, spending

£232,000,

including:

- Education and development for staff. The courses staff attended included vascular management, tracheostomy care, chemotherapy training, advance pain management and end of life conference.
- Funding of the annual staff awards - celebrating those who go the extra mile to make the care and experience for our patients the very best it can be.
- Upgrades and refurbishment of various staff areas including purchase of books and computer equipment.

Events

Event highlight - March for men

Money raised from this event funded men's health projects at the hospital including the purchase of a new Olympus image management hub. This will be used alongside the hospital's Da Vinci Robot, used in complex major surgery to treat men with prostate cancer.

The new equipment takes live images directly from the robot and records it in 3D. Consultants can then use this footage when analysing patient outcomes and can identify aspects of the technique which impact most directly on patient outcomes. The equipment will also benefit patients who undergo kidney and colorectal surgical procedures in the future.

Kevin Turner, Consultant Urological Surgeon, said: "The new hub will be a fantastic resource for the urology department and will enable surgeons to better look at patient outcomes. By reviewing the operation videos we can see what aspects of the surgical technique might be responsible for a particular outcome. This means we can modify and improve our technique going forward.

Over 200 patients have benefitted from the Da Vinci Robot since it was purchased two years ago and this new imaging technology will make a big difference in how men are treated in the future.

March for men

224 participants
RAISED £18,554
 for urology equipment

*Kindly sponsored by
 Williams Thompson*



Kevin Turner, Consultant Urological Surgeon

Our other events

Twilight walk

505 participants,

RAISED **£21,761**

for women's health

*Generously sponsored
by the Village Hotel*

Light up the Prom

Attended by over

2000 people

the event was held in
partnership with Macmillan
Caring Locally and raised

over **£4,500**

for the two charities
*Kindly sponsored by
Quantum Group*

Pedal power

130 participants,

RAISED **£7,505**

for Ambulatory heart equipment
and ECG Heart Monitors

*Kindly sponsored by
Eden Vauxhall*



Corporate Supporters

We are very proud of our many relationships and connections with local businesses and grateful for the support that they give the charity; during the year over £69,000 has been donated by local businesses plus substantial gifts in kind received.

We are also indebted to our charities of the year who helped us raise over £11,000 not to mention donating gifts in kind:

- Thomson Airways Bournemouth; now in their 10th year of supporting the charity
- HSBC
- Chewton Glen
- The Village Hotel
- Thompson Airways

We are pleased to have been selected as Stewarts Garden Centre charity of the year for 2016



HRH the Princess Royal at the opening of the Jigsaw Building with some of our corporate partners

Challenges

Over the course of the year we were fortunate to have many people taking part in organised and individual challenges – our thanks go to each and every one of them.

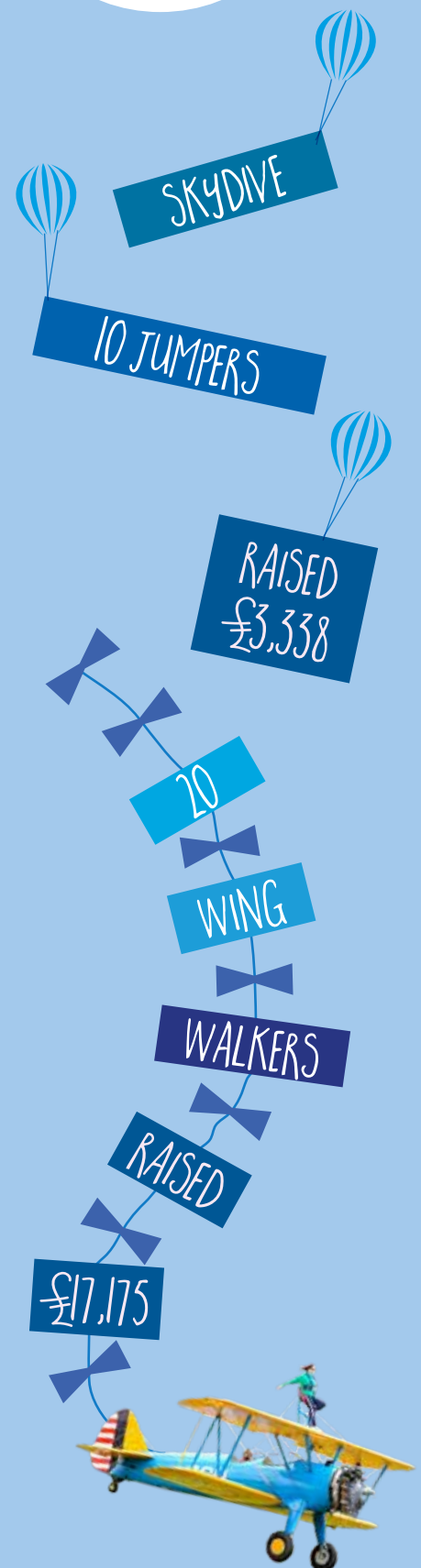
The charity fundraising team organised Skydive challenges for ten jumpers, who together raised over £3,300. And new for the year was the wing-walk; which had 20 brave individuals strapped to the top of a bi-plane, together they raised an amazing £17,175.

Campaigns

During the year we held a variety of campaigns to raise funds these included:

- The annual Brew Up campaign which encourages individuals, groups and companies to hold a coffee morning or tea party to raise funds for dementia projects in the Royal Bournemouth Hospital.
- Our Christmas Campaign involved cake sales, a Christmas Draw, sales of Christmas puddings, Christmas jumper days and donations from companies towards the purchase of presents for in-patients on Christmas Day
- To raise funds for the Orchard Garden project we invited people to hold a garden party to raise funds – these were a great success and we will be continuing this in future years to raise funds for this and similar projects.

CHALLENGES



Community Fundraising

We place enormous value on the relationships we develop in the community with individuals, small businesses and voluntary groups. These vital connections allow us not only to raise funds, but also to build a credible presence locally, create trust, strengthen relationships and raise awareness of the work of the charity. By raising our profile in the community, we are investing in the future of the charity.

In 2015/16 we supported 41 individuals and groups raising funds in the community and we are extremely grateful for all their amazing and truly inspiring efforts. Here are just a few of the many highlights:

60 MILES FOR 60 YEARS DILY RUFFER

Dily Ruffer Governor Co-ordinator for the hospital really inspired us when she completed her '60 miles for 60 years' in celebration of her 60th birthday in March 2016. She raised a whopping £1,300 for the Orchard Garden Project by running four half marathons and a one quarter marathon on some very challenging terrains.



Dily Ruffer

CRAZY CHICKS

Three local women dubbed the 'crazy chicks' came up with a crazy idea to run a distance just short of 200 miles across Britain, so far they have raised over £2,000 for the charity!



TREE OF LIGHTS BOSCOMBE AND SOUTHBOURNE ROTARY CLUB

'Tree of Lights' enables people to remember their loved ones at Christmas. The tree is decorated with lights, each light is sponsored in the name of a loved one and the tree is placed at the entrance of the hospital for all to see. Volunteers, including Rotarians, Inner Wheel ladies and the hospital sold the lights with proceeds made from the £5 sponsorship fee being split between Bournemouth Hospital Charity and the Boscombe and Southbourne Rotary Club's chosen charities.



Volunteers

We are extremely fortunate to have a fantastic team of volunteers who support us with admin tasks in the office, the running of events and in the hospital charity appeal shop. We simply wouldn't make the impact that we do without their generosity and support.

Our volunteers play a vital role as they also act as charity ambassadors in the community, promoting charity events in and outside of the hospital, distributing collection pots, finding prizes for raffles and collecting items for our charity appeal shop. The work they do is invaluable as they are able to reach out to the community in

ways charity staff are often unable to.

We also have volunteers who come in to the hospital to sell raffle tickets throughout the year. This is an extremely valuable and proactive way of boosting our ticket sales and raising awareness of our work.

We regularly rely on volunteers to help at our charity led mass participation events. Their involvement is crucial to the success of our events.

Volunteers – numbers of and hours contributed

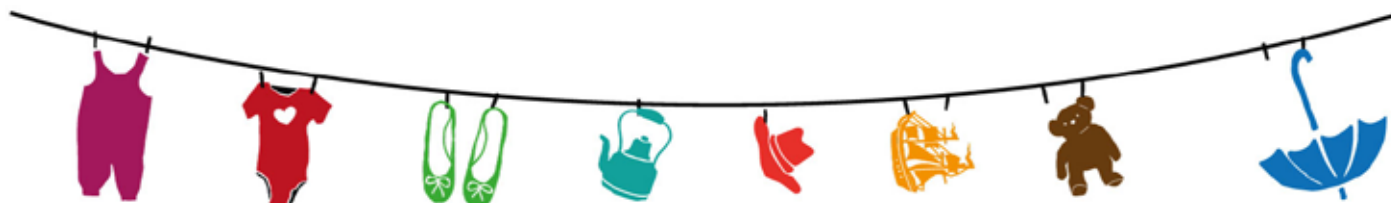
March for Men
24 VOLUNTEERS
gave **72 Hours**

Pedal Power
14 VOLUNTEERS
gave **56 Hours**

Light up the Prom
44 VOLUNTEERS
gave **66 Hours**

Christmas Raffle
20 VOLUNTEERS
gave **34 Hours**

The Hospital Charity Shop



The Hospital Charity shop first opened for business in 1986 and is now located in the atrium at RBH. Every year over £10,000 is raised by our amazing team of volunteers. Recently the shop has undergone a complete transformation. The new shop sells a wide range of generously donated items. From clothes to puzzles and toys to books, the shop has many regular customers who pop in to grab a bargain. Money raised from sales has funded important equipment from replacement mattresses for patient trolleys, wheelchairs to ECG machines and ophthalmoscopes which all contribute to enhancing patient care and comfort.

Marion has been volunteering now for 5 years and has this to say:

“I have always worked full time and when I retired I missed being around people and being busy. I like volunteering in the Charity shop because it’s a friendly place to work and I really enjoy helping our customers and giving something back to our hospital”

Last year our hard-working shop volunteers worked over 750 hours in the charity shop and raised £11,700.

Marion, Charity shop volunteer



Objectives for 2016/17

Bournemouth Hospital Charity has developed a detailed fundraising strategy for the next five years. This provides a framework within which charitable fundraising linked to the Royal Bournemouth and Christchurch Hospitals NHS Foundation Trust should be conducted; and how charity money raised is spent to benefit staff and patients within the Trust.

The main aim within this strategy is to significantly increase charitable income from current levels of circa £1.5 million per annum to £3 million per annum by 2020. This is vital to ensure that the Charity remains financially viable and appropriately supports the Trust's vision and mission.

The primary objective of the Charity during 2016-17 is to ensure that the operational implementation of this strategy is delivered, and that charitable income increases in line with the agreed trajectory. In order to achieve this the charity will need to develop and expand the fundraising team to increase charitable funds from all available income streams.

Additional objectives

In addition to the delivery of the Charity Strategy; there are a number of additional objectives that the Charity will focus on:

- Jigsaw Garden Project - Raise sufficient funds to enable the Orchard Garden project to come to fruition. This project will enhance the lakeside garden area near the Renal unit and provide an additional courtyard garden outside the oncology suite of the Jigsaw building and a sensory walkway to the lakeside garden. Enhancing patient comfort – through the funding of patient Wi-fi and free Hospedia access for specific patient groups
- Medical equipment – support the requirements of directorates and departments with the funding of non-essential equipment which will enhance patient care and welfare
- X-ray equipment Christchurch - Funding is being sought from the affiliate charities to fund the purchase of new x-ray equipment at Christchurch
- Education and Training - Continue to support increased education and training of staff to ensure a well trained workforce and make the Trust a more attractive place to work to support recruitment and retention

Planned spend of funds

Work will be carried out with the fund holders of the larger funds, which include the Heart Fund, Stroke Fund, Cancer Fund and Haematology/Oncology fund to ensure that spend plans are in place in line with donors wishes as appropriate.

In 2015/16 the charity spent
£1.49 million.
84% being
spent on
**medical equipment
and direct patient welfare**

A further 16% was spent on staff welfare including over 100 applications for specific team and individual training and development to enhance the care provided to our patients.

This profile of spend is broadly consistent year on year and it is recommended that:

The Charity will aim to maintain this spend with no less than 80% on patient benefits whilst ensuring that donors wishes are followed where donations have particularly been given for staff welfare and appreciation .

1.0 Reference and Administrative Details

The accounts on which this report is based have been prepared in accordance with the Charities Act 2011, the Charity (Accounts and Reports) Regulations 2008 and the provisions of the trust deed.

The registered Charity Commission number for the Royal Bournemouth and Christchurch Hospitals NHS Foundation Trust Charitable Fund is 1057366.

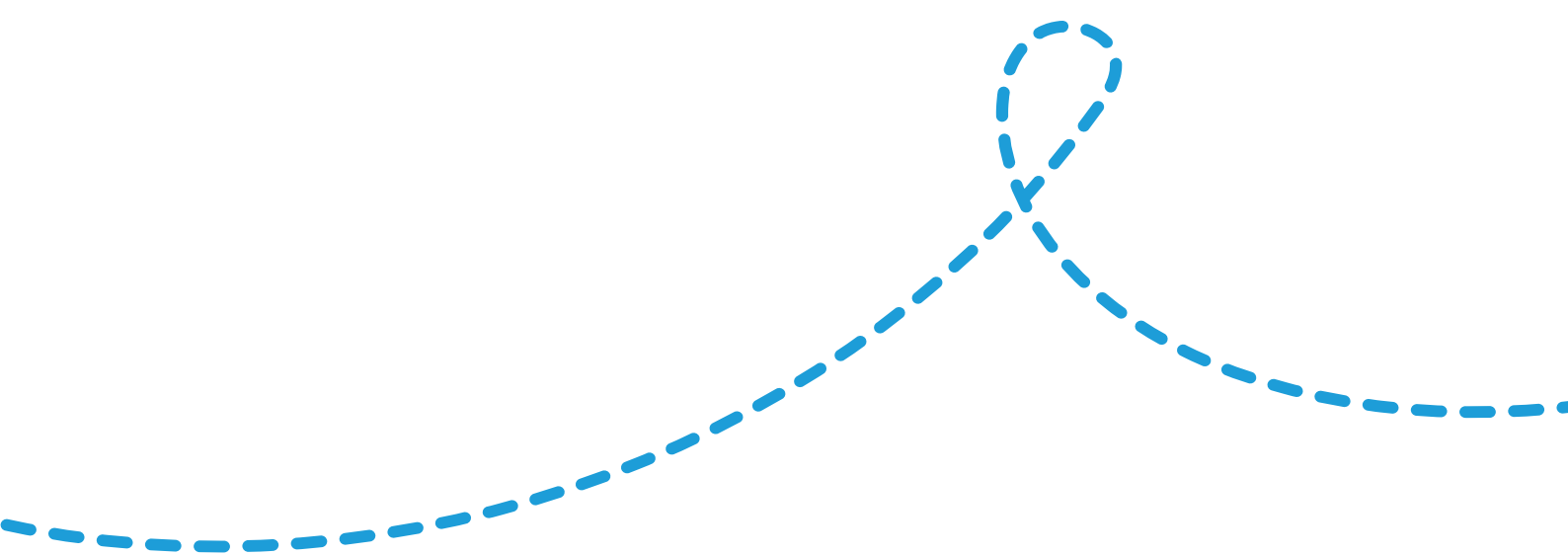
The registered address is:
The Royal Bournemouth and Christchurch
Hospitals NHS Foundation Trust
Castle Lane East
Bournemouth
Dorset
BH7 7DW

The Governing Document (dated 17th May 1996) of the charity is in the form of Trust Deeds and has been registered with The Charity Commission. This document encompasses the main objectives of the charity for the provision of patient care and staff welfare at the Royal Bournemouth and Christchurch Hospitals NHS Foundation Trust, with the Board of Directors acting as a Trustee. The Trustee is given the authority to efficiently and effectively manage the Charitable Funds.

Structure

The charity raises funds that can be accessed and not unreasonably restricted for the benefit of all members of the public. Due regard has been paid to the public benefit guidance published by the Charity Commission.

The Trustee of the Charitable Fund is the Board of Directors of The Royal Bournemouth and Christchurch Hospitals NHS Foundation Trust. The Board of Directors has appointed a Charitable Funds Committee to oversee the arrangements of the charity. This committee monitors the requirements imposed on the Trust by statutory legislation and by the Charity Commission. The committee is also responsible for monitoring the performance of the investments of the charity through its external advisors and approves significant expenditure proposals.



The following were members of the Charitable Funds Committee at the financial year end:

Bill Yardley

Non-Executive Director and Chair of Committee

Stuart Hunter

Director of Finance and Commercial Services

Karen Allman

Director of Human Resources

Safa Al-Shamma

Consultant Surgeon

Dave Bennett

Non-Executive Director

Christine Hallett

Non-Executive Director

Paula Shobbrook

Director of Nursing

In addition to the voting members, the following attend committee meetings in an advisory capacity:

Pete Papworth

Deputy Director of Finance

Debbie Anderson

Head of Fundraising

Graham Swetman

Governor

The Trustee has delegated authorisation of requests for funds based on the following limits:

- Up to £500: Authorised Fund Manager.
- Up to £5,000: Fund Manager and Director of Finance.
- Over £5,000: Fund manager, Business Case Review Panel and Director of Finance.
- Any requests for funds above £20,000 require the additional approval from the Charitable Funds Committee.
- Any requests for medical equipment, regardless of value, must receive approval from the Medical Equipment Committee in addition to the financial approvals above.

The Trustee has agreed that The Royal Bournemouth and Christchurch Hospitals NHS Foundation Trust will provide administrative support to the charitable funds. This takes the form of managerial and accounting services, financial monitoring and advice. An annual fixed sum is recharged, together with actual fundraising costs incurred throughout the year.

Charity Committee Members Induction and Training

Non-executive directors of the Board of Directors are appointed by the Council of Governors. The chief executive is appointed by the non-executive directors, subject to the approval of the Council of Governors. Executive directors of the board are appointed by a committee, normally comprising the chairman, the chief executive, at least two other non-executive directors and an independent assessor, to be approved by the Board of Directors. Members of the Board of Directors and the Charitable Funds Committee are not individual trustees under Charity Law but act as agents on behalf of the Corporate Trustee.

The charity provides, in collaboration with the NHS Foundation Trust, an induction pack for newly appointed members of the NHS Board of Directors and Charity Trustee Committee. As part of their induction programme, new executive and non-executive directors of The Royal Bournemouth and Christchurch Hospitals NHS Foundation Trust are made aware of their responsibilities as Board members of the Corporate Trustee of The Royal Bournemouth and Christchurch Hospitals NHS Foundation Trust Charitable Fund. All executive and non-executive directors are invited to attend core induction and diversity training programmes. A guided tour of the beneficiary NHS Foundation Trust's facilities and any additional training that their role(s) may require is also offered. The chair of the Charity Committee gives new

members of the Charitable Funds Committee a briefing on the current policies and priorities of the charitable funds. This induction includes an introduction to the objectives, scope and policies of the Charitable Funds, member responsibilities and a copy of the latest Charity Annual Accounts and Trustee Annual Report.

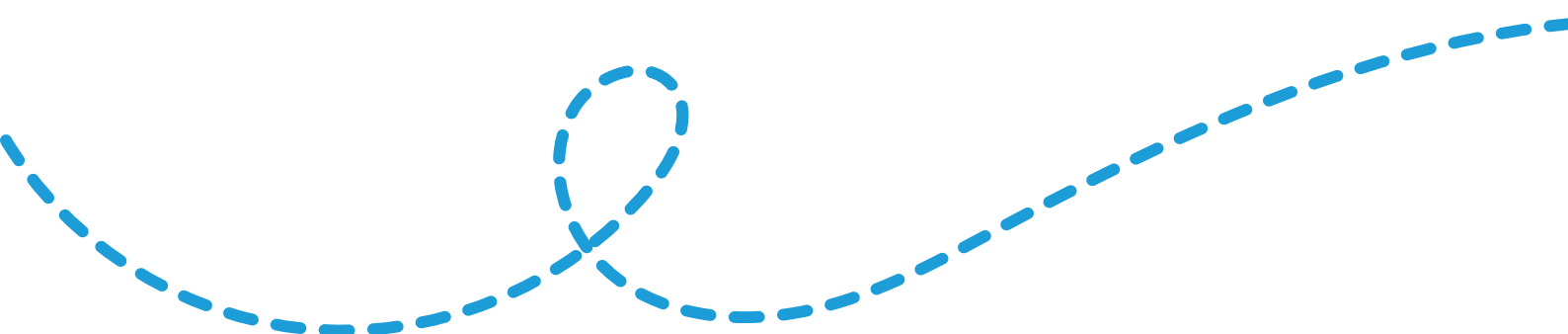
The Trustee employed the following professional advisors during the year:

- a) Bankers: **Barclays Bank**, London
- b) Solicitors: **Beachcroft LLP**, Bristol
- c) Independent Auditor: **KPMG**, Bristol
- d) Investment Managers: **Quilter Cheviot**, Bristol

A full set of Annual Accounts relating to Charitable Funds held on Trust for the year ended 31 March 2016 are included in section 4 of this report.

The Royal Bournemouth and Christchurch hospitals website can be found at:
www.rbch.nhs.uk

The Bournemouth Hospital Charity website can be found at:
www.bournemouthhospitalcharity.co.uk



Risk Management

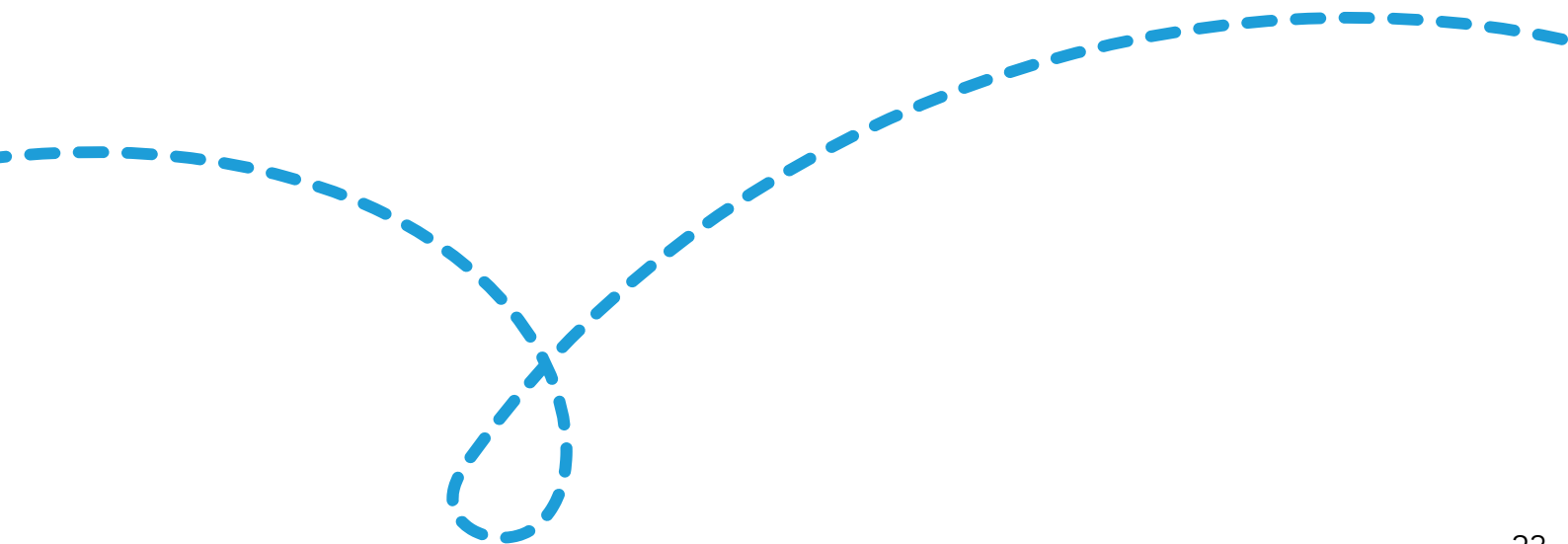
The major risks to which the charity is exposed have been identified and considered by the Trustees. Key risks include increased local competition; the current economic climate; adverse publicity; and a potential fall in the value of investments.

A five year Strategy has been prepared and approved to actively mitigate these risks; and where appropriate, systems, policies and procedures have been established to mitigate specific risks. The trustee is confident that reliance can be placed upon the management arrangements in place, which include internal and external audit services, to minimise any risk to the funds.

The most significant risk identified is the possibility of losses from a fall in the value of investments and the level of reserves available to mitigate the impact of such losses. Investments are held by qualified and experienced Investment Fund Managers who act in accordance with the agreed Investment Policy. These investments are subject to regular review, with unrealised gains and losses allocated to funds at agreed intervals.

Procedures are in place to ensure that financial commitments remain affordable within the fund balance. Income and expenditure are covered by the Trusts standing financial instructions and there is an agreed recognition criteria in place for the receipt of donations.

There are clear approval procedures in place which give the corporate trustee confidence that expenditure will remain in line with the limits of the charities resources, ensuring continued compliance with the agreed reserves policy.



**The Royal Bournemouth and Christchurch Hospitals NHS
Foundation Trust Charitable Funds
For the year ended 31st March 2016**

Contents

Page	Description
25	Introduction
26	Executive Summary
27	Statement of Trustees' responsibilities
28	Independent Auditor's Report
30	Statement of Financial Activities
31	Balance Sheet
32	Notes to the Accounts

National Health Service

Royal Bournemouth and Christchurch Hospitals NHS Foundation Trust

Introduction

Annual Accounts 2015-16

The Royal Bournemouth and Christchurch Hospitals NHS Foundation Trust Charitable Fund , was entered on the Central register of Charities on 06 August 1996.

The charitable funds are registered with the Charity Commission (Charity Number 1057366) in accordance with the Charities Act 2011.

The board of the Royal Bournemouth and Christchurch Hospitals NHS Foundation Trust is the Corporate Trustee of the charitable funds governed by the law applicable to Trusts, principally the Trustee Act 2000 and the Charities Act 2011.

Members of the Board of Directors are not individual Trustees under Charity Law but act as agents on behalf of the Corporate Trustee.

Main purpose of the funds held on trust

The main purpose of the charitable funds held on trust is to apply income for any charitable purpose relating to the National Health Service wholly or mainly for the services provided by the Royal Bournemouth and Christchurch Hospitals NHS Foundation Trust.

Executive Summary

The year ended 31 March 2016 was a successful year for the Royal Bournemouth and Christchurch Hospitals NHS Foundation Trust Charitable funds in the current market conditions.

The charitable funds had total incoming resources amounting to £1,509k. This includes legacies bequeathed totalling £788k, donations of £178k and investment income of £1k. The charitable funds also received £333k from other income, £50k from Grants and £159k from events. These fundraising events help raise the profile of the Hospitals in the local community

Resources expended in 2015/16 totalled £2,031k, of which £745k related to patient welfare, £232k to staff welfare & amenities and £467k was spent on capital schemes throughout the Trust. Commitments of £324k are included and further details on the expenditure for the year can be found in the Charity Annual Report 2015/16.

The net incoming resources for 2015/16, was a £522k loss to the funds with an additional loss of £110k on the revaluation of investment assets. The charitable funds therefore decreased overall by £632k leaving a closing balance of £4,874k (£5,506k, 2014/15). The Financial Report is set out in two parts: namely an Annual Report followed by the Financial Statements and Notes to the Account.

Charitable expenditure is of paramount importance in the continuation of the high quality service offered to our patients and also assists staff in their working lives.

The Trustee wish to thank all patients, relatives, staff, volunteers and supporters whose energy and dedication has enabled us to achieve our charitable objectives.

Member of the Charitable Funds Committee

Date: 25/11/2016



Mr S Hunter - Director of Finance and Commercial Services

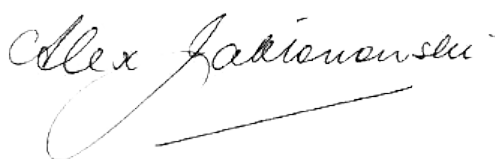
Statement of trustees' responsibilities

Under charity law, the trustees are responsible for preparing the Trustees' Annual Report and the financial statements for each financial year which show a true and fair view of the state of affairs of the charity and of the excess of expenditure over income] for that period. The trustees have elected to prepare the financial statements in accordance with the FRSSE The Financial Reporting Standard for Smaller Entities.

- In preparing these financial statements, generally accepted accounting practice entails that the trustees:
- select suitable accounting policies and then apply them consistently;
- make judgements and estimates that are reasonable and prudent;
- state whether the recommendations of the Statement of Recommended Practice have been followed, subject to any material departures disclosed and explained in the financial statements;
- state whether the financial statements comply with the trust deed;
- prepare the financial statements on the going concern basis unless it is inappropriate to presume that the charity will continue its activities

The trustees are required to act in accordance with the trust deed [and the rules] of the charity, within the framework of trust law. They are responsible for keeping proper accounting records, sufficient to disclose at any time, with reasonable accuracy, the financial position of the charity at that time, and to enable the trustees to ensure that, where any statements of accounts are prepared by them under section 132(1) of the Charities Act 2011, those statements of accounts comply with the requirements of regulations under that provision. They have general responsibility for taking such steps as are reasonably open to them to safeguard the assets of the charity and to prevent and detect fraud and other irregularities.

The trustees are responsible for the maintenance and integrity of the financial and other information included on the charity's website. Legislation in the United Kingdom governing the preparation and dissemination of financial statements may differ from legislation in other jurisdictions.



Chairman of the Charitable Funds Committee

Date: 25/11/2016

Alex Jablonowski



Member of the Charitable Funds Committee

Date: 25/11/2016

Mr S Hunter - Director of Finance and Commercial Services

Independent auditor's report to the Trustees of Royal Bournemouth and Christchurch Hospitals NHS Foundation Trust Charitable Fund

We have audited the financial statements of Royal Bournemouth and Christchurch Hospitals NHS Foundation Trust Charitable Fund for the year ended 31 March 2016 set out on pages 30 to 44. The financial reporting framework that has been applied in their preparation is applicable law and UK Accounting Standards (UK Generally Accepted Accounting Practice) including FRSSE The Financial Reporting Standard for Smaller Entities.

This report is made solely to the charity's trustees as a body, in accordance with section 144 of the Charities Act 2011 (or its predecessors) and regulations made under section 154 of that Act. Our audit work has been undertaken so that we might state to the charity's trustees those matters we are required to state to them in an auditor's report and for no other purpose. To the fullest extent permitted by law, we do not accept or assume responsibility to anyone other than the charity and its trustees as a body, for our audit work, for this report, or for the opinions we have formed.

Respective responsibilities of trustees and auditor

As explained more fully in the Statement of Trustees' Responsibilities set out on page 27 the trustees are responsible for the preparation of financial statements which give a true and fair view.

We have been appointed as auditor under section 144 of the Charities Act 2011 (or its predecessors) and report in accordance with regulations made under section 154 of that Act. Our responsibility is to audit, and express an opinion on, the financial statements in accordance with applicable law and International Standards on Auditing (UK and Ireland). Those standards require us to comply with the Auditing Practices Board's Ethical Standards for Auditors.

Scope of the audit of the financial statements

A description of the scope of an audit of financial statements is provided on the Financial Reporting Council's website at www.frc.org.uk/auditscopeukprivate.

Opinion on financial statements

- In our opinion the financial statements:
- give a true and fair view of the state of the charity's affairs as at 31 March 2016 and of its incoming resources and application of resources for the year then ended;
- have been properly prepared in accordance with UK Generally Accepted Accounting Practice; and

- have been properly prepared in accordance with the requirements of the Charities Act 2011.
- Matters on which we are required to report by exception
- We have nothing to report in respect of the following matters where the Charities Act 2011 requires us to report to you if, in our opinion:
 - the information given in the Trustees' Annual Report is inconsistent in any material respect with the financial statements; or
 - the charity has not kept sufficient accounting records; or
 - the financial statements are not in agreement with the accounting records; or
 - we have not received all the information and explanations we require for our audit.



Jonathan Brown
Date: 01/12/2016

for and on behalf of KPMG LLP, Statutory Auditor
Chartered Accountants

66 Queen Square
Bristol
BS1 4BE
United Kingdom

Statement of Financial Activities for the year ended 31 March 2016

	Note	Unrestricted Funds £000	Restricted Funds £000	2015-16 Total Funds £000	2014-15 Total Funds £000
Incoming resources					
Donations, Legacies and similar resources					
Donations		141	37	178	156
Legacies		778	10	788	684
Grants receivable:					
Other grants receivable	2.2	0	50	50	0
Total Donations and Legacies		919	97	1,016	840
Operating Activities					
Activities for generating funds	4.2	89	70	159	133
Total Operating Activities				0	
Investment income	8.4	1	0	1	2
Other incoming resources		333	0	333	180
Total incoming resources	2	1,342	167	1,509	1,155
Resources expended					
Costs of generating funds	4.2	(196)	(8)	(204)	(179)
Charitable expenditure					
Grants payable	3.1	(1,478)	(295)	(1,773)	(1,365)
Governance Costs	4.1	(54)	0	(54)	(55)
Total resources expended	5.1	(1,728)	(303)	(2,031)	(1,599)
Net incoming resources		(386)	(136)	(522)	(444)
Unreal Gain/Losses - Invest	11.1	(110)	0	(110)	289
Net movement in funds	6	(496)	(136)	(632)	(155)
Fund balances brought forward at 31 March 2015		3,224	2,282	5,506	5,661
Fund balances carried forward at 31 March 2016	11.1	2,728	2,146	4,874	5,506

The notes on pages 33-44 form part of these accounts.

Balance Sheet as at 31 March 2016

	Notes	Unrestricted Funds £000	Restricted Funds £000	Total at 31 March 2016 £000	Total at 31 March 2015 £000
Fixed Assets					
Investments	8.1	3,346	0	3,346	3,456
Total Fixed Assets		3,346	0	3,346	3,456
Current Assets					
Debtors	9	24	0	24	14
Short term investments and deposits	8.3	59	0	59	70
Cash at bank and in hand		37	2,146	2,183	2,458
Total Current Assets		120	2,146	2,266	2,542
Current Liabilities					
Creditors: Amounts falling due within one year	10	(738)	0	(738)	(491)
Net Current Assets		(618)	2,146	1,528	2,051
Total Net Assets		2,728	2,146	4,874	5,506
Funds of the Charity					
Income Funds:					
Unrestricted		2,728	-	2,728	3,224
Restricted		-	2,146	2,146	2,282
Member of the Charitable Funds Committee					
Total Funds	11.1	2,728	2,146	4,874	5,506
Date	2016				

Mr S Hunter - Director of Finance and Commercial Services



Date: 25/11/2016

Notes to the Accounts

Accounting Policies 1

1.1 Accounting Convention

The financial statements have been prepared in accordance with United Kingdom Generally Accepted Accounting Practice; and have been prepared in accordance with the requirements of section 144 of the Charities Act 2011 and regulation 8 of The Charities (Accounts and Reports) Regulations 2008.

The Charity qualifies as small, as it satisfies any two of the three criteria below, which makes the charity eligible to use the FRSSE SORP, rather than the FRS102 SORP for larger charities:-

	<u>Comply</u>
1) Turnover of £6,500,000 or less	Yes
2) Total assets of £3,260,000 or less	No
3) Average number of employees of 50 or less	Yes

1.2 Incoming Resources

a) All incoming resources are recognised once the charity has entitlement to the resources, it is certain that the resources will be received and the monetary value of the incoming resources can be measured with sufficient reliability.

b) Gifts in kind

The charity received no gifts in kind during 2015-16

c) Intangible income

The charity had no intangible income/ expenditure during the year.

d) Legacies

Legacies are accounted for as incoming resources once the receipt of the legacy becomes reasonably certain. This will be once confirmation has been received from the representatives of the estates that payment of the legacy will be made or property transferred and once all conditions attached to the legacy have been fulfilled.

Material Legacies which have been notified but not recognised as incoming resources in the Statement of Financial Activities are disclosed in a separate note to the accounts with an estimate of the amount receivable. (Note 12)

1.3 Resources Expanded & Arrangements with RBCH Staff

The funds held on trust accounts are prepared in accordance with the accruals concept. All expenditure is recognised once there is a legal obligation to make a payment to a third party.

a) Cost of generating funds

The cost of generating funds are the costs associated with generating income for the funds held on trust. This will include the costs associated with the Jigsaw Appeal.

The Trust fundraising team continues to organise fundraising and provides the opportunity to increase income. The costs associated with fundraising and the overhead facility costs, are recharged from the Royal Bournemouth (RBH) and Christchurch (XCH) Hospitals NHS Foundation Trust, and these are on an accruals basis based on actual costs incurred.

b) Grants payable

Grants payable are payments, made to third parties (including NHS bodies) in the furtherance

of the funds held on Trust's charitable objectives are the provision of patient care and staff welfare.

They are accounted for on an accruals basis where the conditions for their payment have been met or where a third party has a reasonable expectation that they will receive the grant. This includes grants paid to NHS bodies.

1.3 c) Management and administrative costs

Staff provision for financial information support has been agreed. Associated costs are accounted

for on an accruals basis and are recorded as recharges of appropriate proportions from the Royal Bournemouth and Christchurch Hospitals NHS Foundation Trust. The recharge for 2015/16 totalled £54,224.

The recharge is made up as follows:

Financial Services :	2015/16	2014/15
RBCH Staff	12	16
Internal Audit	6	3
External Audit	5	5
Non Pay Costs	8	8
Ext NHS Finance Services	22	22
Indemnity insurance	1	1
Total	54	55

Fundraising costs are also recharged to the charity from the Foundation Trust and are detailed below:

RBCH Staff	2015/16	2014/15
Pay	160	120
Non-Pay	25	25
Total	185	145

1.4 Structure of funds

The funds are classified and structured as shown in the table below :

Unrestricted Funds

A majority of the charitable funds are unrestricted in their classification. They are “earmarked” unrestricted funds which are classified into individual areas, to be used for a particular purpose in the future. The use of these funds are at the discretion of the Trustee to benefit both patient & staff in their use within a specified area of the Hospitals.

The Jigsaw , Orchard Garden and Christchurch Refirbishment Funds are restricted income funds that are expendable at the discretion of the Trustee in furtherance of some particular aspect(s) of the objectives of the charity and are in line with the donor’s wishes.

These funds have arisen from income generated and are for use by the fund managers to benefit the area specified in the Appeals purpose. The funds must be utilised in line with the specified purpose.

The Trust has no Endowment (Capital - Expendable or Permanent) Funds.

Analysis of the unrestricted and restricted funds can be found in Note 11.1 & 11.2.

Details of the funds and their individual purpose can be obtained from the Annual Report along with information on the fund performance for the year 2015/16

1.5 Fixed Asset Investment

Investment Fixed Assets are shown at Market Value, as detailed in Note 8 to the Statement of Financial Activities.

The Trustee policy is to invest charitable funds with investments that maximise capital and are the most suitable investment type. The long-term objective is to invest capital that will

give the maximum growth on income with minimal risk. The investment held as at balance sheet date are units within a Common Investment Fund and are included in the Balance Sheet at the closing price at 31st March 2016.

1.6 Investment gains and losses

All gains and losses are taken to the Statement of Financial Activities as they arise. Realised gains and losses on investments are calculated as the difference between sales proceeds and opening market value (or date of purchase if later).

Unrealised gains and losses are calculated as the difference between the closing market value and the opening value (or date of purchase if later). These are shown in the Statement of Financial Activities under gains on revaluation of investment assets.

Analysis of the Investment gains and losses can be found in Note 8 to the Statement of Financial Activities.

1.7 (Fixed) Short Term Investments

This is interest received on the main bank accounts Short Term Investments include Stocks & Equities that have been received as part of Legacy distributions given to the Charitable Funds. These are revalued at year end and any gain or loss on revaluation of the investment asset is shown in the Statement of Financial Activities.

1.8 Apportionment of Investment Income

The Fixed Asset Investment (Common Investment Fund) is revalued every month and any unrealised gains or losses on the difference between the closing balance and the opening balance is apportioned over the funds (excluding Restricted).

1.9 Pensions Contributions

There are no employees within the charity.

1.10 Prior Year Adjustments

There have been no prior year adjustments during 2015-16

1.11 Pooling Scheme

An official pooling scheme is registered for investments with the Charity Commission on 16 June 1998.

1.12 Related Party Transactions

The Charitable Trust has made revenue and capital payments to the Royal Bournemouth and Christchurch Hospitals NHS Foundation Trust where the Trustees are also members of the Board of Directors. A summary of the Turnover and Net

Surplus for the NHS Foundation Trust for 2014-15 and 2015-16 is shown in Note 15. Arrangements are in place with the Royal Bournemouth and Christchurch Hospitals NHS Foundation Trust for the completion of a monthly recharge relating to all charitable expenditure incurred by the Trust. The recharge is paid in arrears. Details of Resources Expended with related parties during 2015-16 are shown in Note 3.2.

As at 31/03/16, the charity owed £41,484 to the Trust.

1.13 Reserves Policy

Most of the expenditure incurred by the Charity is in respect of contributions to patients, staff and the purchase of medical equipment. The policy of holding reserves is a balance between keeping a relatively small sum of money in individual funds for which specific donations have been made and planning for additional capital investment.

The Trustees would normally expect to retain reserves equal to two to three year's annual expenditure, not including the balance of the Restricted Jigsaw Funds. The reserves are replenished through the receipt of significant legacies and donations. In recent years, the value of income has reduced resulting in a corresponding reduction in committed expenditure. The reserves policy will continue to be reviewed annually.

1.14 Supporters

Recognised organisations as major supporters to the Royal Bournemouth & Christchurch Hospitals NHS Foundation Trust Charitable Funds, are as follows:

- The League of Friends Bournemouth and League of Friends Christchurch
 - Macmillan Caring Locally
 - RVS
 - Friends of the Bournemouth Eye Unit
 - Bournemouth Chest Diseases
 - WBCF - Tulip Appeal
 - The Bournemouth Healthcare Trust (BHT)
- Income and Expenditure relating to Third Party Recharges are included in other within Incoming Resources and Expenditure is included within Grants Payable.

Details of all Third Party Recharges during 2015/16 are shown in Note 2.3.

1.15 Trustee Remuneration

There have been no payments made during the year for the refund of expenses or remuneration to the Trustee.

1.16 Donations Policy

Donations are received and receipted to the donor. All donations are allocated to the specified fund, as stated by the donor. Any restrictions on donations usage are adhered to by the Fund Managers and the funds are classified accordingly.

Further details of the purposes of various funds can be seen within the Annual Report.

1.17 Activities in Furtherance of Charity Objectives

In the furtherance of charity objectives, events have been held throughout the year by the fundraising office to generate income to the charitable funds. Income from the fundraising events held, can be seen within Operating Activities for generating funds. see Note 2.1.

All related expenditure to these fundraising events has been included within costs of generating funds and can be separately seen on the Statement of Financial Activities for the year.

1.18 Post Balance Sheet Event

There are no post Balance Sheet events.

1.19 Support Cost Apportionment

The 2014-15 approach is that all charges are debited to the general fund rather than apportioned against all funds. This ensures that specific and small fund balances are not eroded through admin and fundraising charges, To off-set this, and to ensure equity, all interest and investment gains/losses are also accounted in the general fund

After review by the charity committee, in 2015/16 the methodology was amended to apportioning fundraising and administration recharges, together with investment gains and losses across all fund balances (excluding restricted funds, namely Jigsaw, Orchard Garden and Christchurch Refurbishment).

1.20 Going Concern

The Charity has significant financial resources, and Charity Fund approval commitments are included in these accounts, which therefore show the available funds.

The return on investment has decreased over the previous year, however donations

and legacies have increased , which together with the planned investment in the fundraising / legacy staff will development the awareness of the charity and increase income in future years.

After making enquiries , the Corporate Trustee has reasonable expectation that the Charity has adequate resources to continue in operational existence for the foreseeable future . For this reason , they continue to adopt the going concern basis in preparing the Annual Report and Accounts.

1.21 Public Benefit Entity

This is an NHS Charity , a public benefit entity, whose purposes are detailed in the introduction on page 25.

Charity Fund Applications are reviewed and approval given (within the authorities detailed on page 21) with due regard to the commission's public benefit guidance and the purposes of the charity.

1.22 Judgements and Estimations

The accounts include commitments for items approved through the Charity Fund Approval process. (see note 13). The values of these approvals will be based on best estimate of costs, some supported by quotations, purchase orders and costed internal recharges.

1.23 Donated Goods , Facilities or services

The charity received no donated goods , facilities or services.
Events may be held on third party sites , but costs associated with events would be recorded under cost of generating funds expenditure.

1.24 Irrecoverable VAT

Irrecoverable VAT is charged against the category of resources expended for which it was incurred.

1.25 Taxation Liability

As a registered charity, the fund is potentially exempt from the taxation of income and gains falling within S505 of the Income and Corporation Taxes ACT 1988 and S256 Taxations and Chargeable Gains ACT 1992.
No tax charge has arisen in the year.

2. Incoming resources

Details of material incoming resources	2.1		Unrestricted Funds	Restricted Funds	Total Funds	Total Funds
			£000	£000	2015-16 £000	2014-15 £000
		Material incoming resources				
		Bournemouth Eye Unit	281	0	281	38
		General Fund	289	0	289	288
		Jigsaw New Build	0	44	44	69
		Orchard Garden	0	113	113	0
		Haematology / Oncology	83	0	83	25
		Colorectal	2	0	2	1
		Heart Fund	157	0	157	45
		Palliative Care - Mac Unit	0	0	0	6
		Cancer	298	0	298	101
		Chest Diseases	6	0	6	1
		Others	226	10	236	575
		Total incoming resources	1,342	167	1,509	1,155

Incoming resources received by category	2.2	Total Funds 2015-16 £000	Total Funds 2014-15 £000
Description of the sources of any incoming resources by category			
Donations		178	156
Legacies		788	684
Activity Income from Fundraising Events		159	133
Other Grants Receivable		50	0
Interest / Dividends		1	2
Other Income		333	180
Total		1,509	1,155

Income from Third Parties for recharged expenditure	2.3	Total Funds 2015-16 £000	Total Funds 2014-15 £000
Details of material Third Party recharges during the year, included in Donations			
The League of Friends (Bmth & Christchurch)		117	30
Christchurch Hospital League Of Friends		59	0
Friends of the Bournemouth Eye Unit		101	18
Macmillan Caring Locally (formerly The Macmillan Cancer Trust)		4	0
Bournemouth Healthcare Trust		52	101
Other		1	5
		333	154

Grants paid to Individuals	3.3	Total number of grants made to individuals:	Unrestricted Funds	Restricted Funds	Total Funds 2015-16 £000	Total Funds 2014-15 £000
			£000	£000		
		There was no grant made to an Individual during the year.	0	0	0	0
		Total	0	0	0	0

Analysis of Governance Costs	4.1		Unrestricted Funds	Restricted Funds	Total Funds 2015-16 £000	Total Funds 2014-15 £000
			£000	£000		
		External Audit fee (including VAT)	5	0	5	5
		Miscellaneous	49	0	49	49
		Total	54	0	54	55

Costs of Generating Funds	4.2		Total 2015-16 £000	Total 2014-15 £000
		Fundraising recharge (including staff recharge costs)	185	145
		Publicity costs *	19	34
		Total fundraising costs	204	179
		Total funds raised from events held during the year **	159	133

Note: * Publicity costs are included within Total Fundraising costs within the financial statements.

** The total funds raised excludes donations received directly into the Charities Office, these are included within Donations.

Further breakdown of the activities undertaken by the Fundraising Department during the year can be found in the Annual Report 2015/16.

Support Costs 4.3 There are no support costs incurred during the year.

Analysis of Total Resources Expended	5.1		Cost of Generating Funds	Cost of Activities for Charitable Objectives	Governance Costs	Total 2015-16 £000	Total 2014-15 £000
			£000	£000	£000		
		External Audit fee (including VAT)	0	0	5	5	5
		Other fees	0	0		0	0
		Indemnity insurance	0	0	1	1	1
		Bought-in services from NHS	0	0	47	47	48
		Other	204	1,773	0	1,977	1,545
		Total	204	1,773	54	2,031	1,599

Changes in Resources Available for Charity Use	6		Unrestricted Funds £000	Restricted Funds £000	Total Funds 2015-16 £000	Total Funds 2014-15 £000
		Net movement in funds for the year	(496)	(136)	(632)	(155)
		Net movement in funds available for future activities	(496)	(136)	(632)	(155)

Tangible Fixed Assets	7	There are no Tangible Fixed Assets.
------------------------------	---	-------------------------------------

Analysis of Fixed Asset Investments	8	8.1	Fixed Asset Investments:	2015-16 £000	2014-15 £000
			Market value at 31 March	3,456	3,166
			Net gain / (Loss) on revaluation	(110)	289
			Market value at 31 March	3,346	3,456
			Historic cost	2,850	2,850

8.2	Market value at 31 March:	Held in UK £000	2015-16 Total £000	2014-15 Total £000
	Investments in a Common Deposit Fund or Common Investment Fund	3,346	3,346	3,456

Analysis of Narrow Range Investments	8.3	(Fixed) Short-term Deposits :	UK Holdings £000	Non-UK £000	2015-16 Total £000	2014-15 Total £000
		Stocks & Equities	52	7	59	70
			52	7	59	70

Analysis of Gross Income from Investments	8.4	Total gross income	2015-16 Total £000	2014-15 Total £000
		Other investments	1	2
			1	2

Included in this total is income from Non-UK Stocks & Equities amounting to less than £1k.

Analysis of Debtors	9	Amounts falling due within one year as at 31 March:	2015-16 £000	2014-15 £000
		Other debtors	24	14
		Total Debtors	24	14

**Analysis of 10
Creditors**

	3/31/16 £000	3/31/15 £000
Amounts falling due within one year as at 31 March:		
Other creditors	39	117
Accruals (see note 13.1)	699	375
Total Creditors	738	491

**Analysis of 11
Funds 11.1**

	Balance 31 March 2015	Incoming Resources	Resources Expended	In Year Commitments	Transfers	Gains and Losses	Balance 31 March 2016
		£000		£000	£000	£000	£000
Unrestricted							
Research	12	0	(10)	(0)	0	0	2
Palliative Care-Mac Unit	67	0	(38)	2	0	0	31
Stroke	286	42	(59)	(15)	0	0	254
Rheumatology	67	1	(30)	(2)	0	0	37
Medical Equip	353	62	(344)	146	0	0	217
General Fund	321	289	(256)	(4)	0	(110)	240
Others	2,119	946	(668)	(448)	0	0	1,948
Total Unrestricted	3,224	1,341	(1,405)	(322)	0	(110)	2,728
Restricted							
Jigsaw - New Build	2,282	44	(293)	12	0	0	2,044
Orchard Garden	0	113	(8)	(14)	0	0	92
Charities Office	0	10	0	0	0	0	10
Total Restricted	2,282	167	(301)	(2)	0	0	2,146
Total of all Funds	5,506	1,508	(1,706)	(324)	0	(110)	4,874

**Details of 11.2
Material
Funds**

Name of group funds

Research	Research into cure of sickness & advancement of medical education
Palliative Care	Any purposes relating to the Palliative Care Unit of the Trust
Stroke	Any purpose relating to the stroke rehabilitation within the Trust
Rheumatology	Any purpose relating to the treatment of Rheumatology within the Trust
Medical Equipment	For purchases and/or maintenance of medical equipment within the Trust
General Fund	General Purpose of the Royal Bournemouth & Christchurch Hospitals
Others	This represents all other unrestricted funds under the classification of "Umbrella funds"
Jigsaw - New Build	To extend and improve the Oncology / Haematology Unit within the Bournemouth Hospital
Orchard Garden	To develop new gardens for the enjoyment of patients and staff
Charities Office	Restricted smaller donations to be managed by the Charities Office

Contingencies	12	The following contingent gains have not been included in the accounts:	31/03/16 £000	31/03/15 £000
		Contingent gains:		
		Outstanding Legacies	142	138
		Total contingent gains	142	138

Commitments, Liabilities and Provisions	13 13.1	Commitment Breakdown for 2015/16			
			Capital £000	Other £000	Total £000
		Brought Forward Commitments as at 31 March 2015	200	174	374
		14/15 Commitments spent during 15/16	(200)	(103)	(303)
		Remaining 14/15 commitment	0	71	71
		New commitments during 15/16	284	344	628
		Commitments as at 31 March 2016	284	415	699

Large Commitments 15/16 - Projected expenditure dates

	CFA Number	Value £000	Estimated Expend Date
Oncology projects including Canshare	RBH1133	62	16-17
PCI Bimeter IOL Master & equipment	RBH1260	35	16-17
Examination chairs and slit lamps	RBH1261	109	16-17
Deep storage solution	RBH1303	39	16-17
Breast specimen cabinet	RBH1310	72	16-17
Videoconferencing seminar room	RBH1320	31	16-17

- 13.2** The Trustee recognise liabilities in the accounts once they have incurred either a legal or constructive obligation to expend funds.
Commitments totalling **£699,071** relating to grants payable, have been included in the accounts.

Indemnity Insurance	14	Description of Cover :	2015-16 £000	2014-15 £000
		Trustee Indemnity Insurance	1	1

Connected Organisations	15	2015-16 (Audited)		2014-15 (Audited)	
			Deficit		Deficit
		Income of Connected Organisation	for Connected Organisation	Income of Connected Organisation	for Connected Organisation
		£000	£000	£000	£000
	Name of Organisation				
	Royal Bournemouth and Christchurch Hospitals NHS Foundation Trust	272,989	(11,566)	266,381	(5,232)

Thank you

Our heartfelt thanks go to the many donors, volunteers, supporters, fundraisers and groups without whom we would not be able to provide the many benefits to the patients and staff at the Royal Bournemouth and Christchurch Hospitals.

We simply cannot thank everyone so here are a few of our major donors and supporters:

The League of Friends of the Royal Bournemouth Hospital
Christchurch Hospital League of Friends
Dorset Cancer Care Foundation
Going for Bust
Thomson Airways
Ben Harvey Memorial Golf Day
Nationwide
Santander
Quantum Group
Christchurch golf Club
Chewton Glen
Breathe Right Rest Easy
Village – The Hotel Club
Friends of the Bournemouth Eye Unit
JP Morgan
Fiona Castle
Wimborne Mower Club