

Registered Charity Number 243352

**ROYAL SOCIETY FOR THE PREVENTION OF CRUELTY TO ANIMALS
SOUTH BUCKS BRANCH**

**Report and Accounts
for the year ended 31 December 2016**

**Lane Accounting Limited
Chartered Accountant
Denmark House
143 High Street
Chalfont St Peter
Bucks SL9 9QL**

ROYAL SOCIETY FOR THE PREVENTION OF CRUELTY TO ANIMALS
South Bucks Branch - Registered Charity No. 243352

CONTENTS

	Page
Trustees' Report	1-3
Independent Examiner's Report	4
Statements of Financial Activities	5-6
Balance Sheet	7
Notes to the Financial Statements	8-11

ROYAL SOCIETY FOR THE PREVENTION OF CRUELTY TO ANIMALS
South Bucks Branch - Registered Charity No. 243352

Trustees' report

Our objectives and activities

Our core work

The charity's primary objective is to support the national body, the RSPCA, in our designated area in South Buckinghamshire, in the prevention of cruelty to animals. Our main activities are animal rescue and re-homing, neutering services, welfare services and education.

A sustainable RSPCA

We operate retail outlets at a surplus, and undertake various fundraising activities to maintain our reserves at a sufficient level to ensure our charitable activities can be maintained several years into the future.

Short-term goals:

To maintain our current level of animal welfare activities, to provide support where it is needed in our area and to increase our education services.

Medium to long-term goals:

These are to be aligned with the national body's long term goals.

Experience gained and lessons learned

During 2016 we were unable to find full time volunteers to cover our welfare services. We have now, in 2017, reduced the hours we can cover, but still provide a daily service.

Trustee's statement of responsibilities

The Trustees are legally required to prepare financial statements for each year and an Annual Report on the activities of the Branch during the year. The financial statements are prepared in accordance with The Charities Statement of Recommended Practice (SORP) 2015 Financial Reporting Standard (FRS 102) which came into effect from 1 January 2015.

In preparing the financial statements, the Trustees are required to: prepare accounts which represent a true and fair view; select suitable accounting policies and then apply them consistently; make judgements and estimates that are reasonable and prudent; state whether applicable accounting standards have been followed; prepare the statements on a going concern basis unless it is inappropriate to assume that the Branch will continue to operate and prepare an assessment of the risks and opportunities.

The Trustees are responsible for ensuring that proper accounting records are kept which disclose with reasonable accuracy at any time the financial position of the Branch and enable Trustees to ensure that financial statements comply with the Charities Act 2011 and the Charities (Accounts and Reports) Regulations 2008. The Trustees are also responsible for taking reasonable steps for the prevention and detection of fraud and other irregularities by the establishment of a system of internal controls.

ROYAL SOCIETY FOR THE PREVENTION OF CRUELTY TO ANIMALS
South Bucks Branch - Registered Charity No. 243352

RSPCA National Society

The RSPCA's statutory status, its internal rules and its branch rules regulate the relationship between the Society and the branches. Each branch is established as an unincorporated charitable association, but the RSPCA Council has powers to intervene in a branch's affairs in certain circumstances. Much of the RSPCA's direct animal welfare is carried out through its branches such as subsidized veterinary care and rehoming in their local areas. The national Society works closely with the RSPCA branches in delivering animal welfare aims and strategy and provides financial and other support to the branches.

Public benefit

All charities in England and Wales have charitable aims that are based on providing public benefit and comply with the Charities Act 2011. The trustees pay due regard to Charity Commission guidance on public benefit. Preventing cruelty and promoting kindness to animals promotes humane sentiment in humans towards animals which gives a moral benefit to the human community as a whole.

Risk management

The charity is managing a portfolio of risks. The trustees identify major risks in their monthly meetings, consider their potential impact, and take appropriate actions to mitigate or manage such risks.

Financial Review

The Statement of Financial Activities (SOFA) on pages 5 to 7 report a surplus for the year of £22,873. The accounts (financial statements) have been prepared in accordance with the Statement of Recommended Practice: accounting and reporting by charities preparing their accounts in accordance with the Financial Reporting Standard applicable in the UK and Republic of Ireland (FRS 102) issued on 16 July 2014 and the Financial Reporting Standard applicable in the United Kingdom and Republic of Ireland (FRS 102), and the Charities Act 2011 and UK Generally Accepted Practice as it applies from 1 January 2015.

In 2016 the charity had sufficient funding to allow it to pay for all animal care costs and educational activities in full in the South Bucks area.

The Branch made a surplus of £22,873 in 2016 compared to a surplus of £52,953 in 2015. This reduction is due to reduced income, mainly from legacies, whilst expenditure remains close to 2015 levels. The surplus has increased our general funds from £386,570 at 31 December 2015 to £409,443 at 31 December 2016, which gives the Branch sound financial security going forward.

The surplus in 2016 includes donations and fund-raising events income of £35,417 and re-homing income of £7,323. We are very grateful to our benefactors, donors and fund-raisers for their kindness and generosity to our Branch.

Income in 2016 is £237,387 (2015: £271,787). Overall income in 2016 was at levels very similar to 2015 with the exception of legacies and grants, which were lower than last year and tend to be irregular year on year.

ROYAL SOCIETY FOR THE PREVENTION OF CRUELTY TO ANIMALS
South Bucks Branch - Registered Charity No. 243352

Expenditure in 2016 is £214,515 (2015: £218,834) and has been maintained at a similar level to 2015 despite the reduction in income. The branch policy is to maintain expenditure levels in response to need in our area and knowing that the general funds can be utilized should the Branch fall into deficit in any annual period. Despite this the Branch generated a surplus in 2016, albeit a reduced one.

Our four shops made a combined surplus of £65,392 in 2016 compared with £70,401 in 2015. Both income and expenditure were very similar to previous year. In June 2016 the lease on the Amersham shop came up for renewal and the Trustees decided not to renew it, to close the Amersham shop and to continue with three shops for the foreseeable future. Many thanks to our shop employees and volunteers for their hard work.

The Trustees continue to keep our financial affairs under review to optimize our income and reduce those expenses we have control over so that we can continue with our welfare work for animals in South Bucks. The Branch has many loyal supporters. Every one of them has helped the Branch in some way to improve the lives of animals that come into our care. The Trustees of the Branch would like to thank you all so very much.

Reserves

The Branch only holds unrestricted reserves. As at 31 December 2016, the balance of reserves was £409,443. There are no pension liabilities as the charity's scheme is defined contribution. The Branch's reserves policy is to maintain a level of free reserves that will enable the Branch to ensure a continuity of activity and have the ability to adjust in a measured way to significant changes in the external economic environment and demands on services provided by the charity. The Branch holds the equivalent of twenty-two months of operational expenditure in either current or deposit accounts, which is deemed appropriate.

..........Simon Plummer (Treasurer)

On behalf of the Trustees of RSPCA South Bucks Branch

ROYAL SOCIETY FOR THE PREVENTION OF CRUELTY TO ANIMALS
South Bucks Branch - Registered Charity No. 243352

Independent Examiners' Report to the Trustees

We report on the accounts for the year ended 31 December 2016 set out on the following pages.

Respective responsibilities of trustees and examiner

The charity's trustees are responsible for the preparation of the accounts. The charity's trustees consider that an audit is not required for this year under section 144 of the Charities Act 2011 (the Charities Act) and that an independent examination is needed.

It is my responsibility to:

- examine the accounts under section 145 of the Charities Act,
- to follow the procedures laid down in the general Directions given by the Charity Commission (under section 145(5)(b) of the Charities Act, and
- to state whether particular matters have come to my attention.

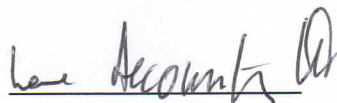
Basis of independent examiner's report

Our examination was carried out in accordance with general Directions given by the Charity Commission. An examination includes a review of the accounting records kept by the charity and a comparison of the accounts presented with those records. It also includes consideration of any unusual items or disclosures in the accounts, and seeking explanations from the trustees concerning any such matters. The procedures undertaken do not provide all the evidence that would be required in an audit, and consequently no opinion is given as to whether the accounts present a 'true and fair' view and the report is limited to those matters set out in the statement below.

Independent examiner's statement

In connection with my examination, no matter has come to my attention

1. which gives me reasonable cause to believe that in, any material respect, the requirements:
 - to keep accounting records in accordance with section 130 of the Charities Act; and
 - to prepare accounts which accord with the accounting records and comply with the accounting requirements of the Charities Acthave not been met; or
2. to which, in my opinion, attention should be drawn in order to enable a proper understanding of the accounts to be reached.



Lane Accounting Limited
Chartered Accountant
Denmark House
143 High Street
Chalfont St Peter
Buckinghamshire SL9 9QL

April 2017

ROYAL SOCIETY FOR THE PREVENTION OF CRUELTY TO ANIMALS
South Bucks Branch - Registered Charity No. 243352

Statement of Financial Activities for the year ended 31 December 2016

	Notes	2016		2015	
		£	£	£	£
INCOME					
DONATIONS & LEGACIES					
Subscriptions and collecting boxes		3,134		2,547	
Donations and fund-raising events		35,417		41,088	
Legacies		658		19,375	
		<u> </u>	39,209	<u> </u>	63,010
INCOME FROM INVESTMENTS					
Interest receivable			2,735		2,756
INCOME FROM TRADING ACTIVITIES					
Re-Homing income		7,323		8,909	
Shops Income	6	186,588		189,968	
		<u> </u>	193,911	<u> </u>	198,877
OTHER INCOME					
Other income		832		1,760	
Neutering allowance from Head Office		-		384	
Grant for New Van		-		5,000	
Sale of Van		700		-	
		<u> </u>	1,532	<u> </u>	7,144
TOTAL INCOME			237,387		271,787

ROYAL SOCIETY FOR THE PREVENTION OF CRUELTY TO ANIMALS
South Bucks Branch - Registered Charity No. 243352

Statement of Financial Activities for the year ended 31 December 2016


	Notes	2016 £	2015 £
EXPENDITURE			
DIRECT CHARITABLE EXPENDITURE			
HQ quota		1,100	1,100
HQ animal food & equipment		-	98
Kennel fees		11,342	14,543
Veterinary fees		35,931	40,465
Veterinary supplies		3,479	3,147
		<u>(51,852)</u>	<u>(59,353)</u>
EXPENDITURE ON RAISING FUNDS			
Advertising & fund raising		5,820	7,454
Telephone		1,183	1,347
Van expenses		3,440	3,359
Repairs and equipment		823	236
Storage		2,036	1,525
Printing, stationery, and postage		1,378	1,311
Bank charges		901	1,034
Shops Expenditure	6	121,195	119,567
		<u>(136,776)</u>	<u>(135,833)</u>
GOVERNANCE & SUPPORT EXPENDITURE			
Wages & salaries		18,740	20,248
Pension Contributions		29	0
Depreciation		4,609	704
General expenses		281	675
Legal & professional fees		1,027	1,021
Accountancy		1,200	1,000
		<u>(25,886)</u>	<u>(23,648)</u>
TOTAL EXPENDITURE		<u>(214,514)</u>	<u>(218,834)</u>
Surplus for the year		22,873	52,953
Surplus brought forward		386,570	333,617
SURPLUS CARRIED FORWARD		<u><u>409,443</u></u>	<u><u>386,570</u></u>

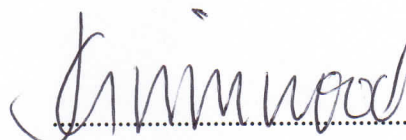
ROYAL SOCIETY FOR THE PREVENTION OF CRUELTY TO ANIMALS
South Bucks Branch - Registered Charity No. 243352

Balance Sheet
as at 31 December 2016

		2016		2015	
	Notes	£	£	£	£
Fixed Assets					
Tangible assets	2		14,738		5,204
Current Assets					
Stocks		2,013		2,524	
Debtors and prepaid expenses	3	11,833		25,559	
Cash at bank and in hand		395,327		373,750	
		<u>409,173</u>		<u>401,833</u>	
Creditors: amounts falling due within one year	4	<u>(14,468)</u>		<u>(20,467)</u>	
Net Current Assets			<u>394,705</u>		<u>381,366</u>
Total Assets Less Current Liabilities			<u>409,443</u>		<u>386,570</u>
Funds					
General funds brought forward			386,570		333,617
(Deficit)/Surplus for the year			22,873		52,953
GENERAL FUNDS CARRIED FORWARD			<u>409,443</u>		<u>386,570</u>

These accounts were approved by the board of trustees on 24 April 2017 and signed on their behalf by:

.....  Simon Plummer (Treasurer)

 Jill Grimwood (Secretary)

ROYAL SOCIETY FOR THE PREVENTION OF CRUELTY TO ANIMALS

Notes to the Financial Statements for the year ended 31 December 2016

1. Accounting Policies

1.1. Basis of Accounting

The financial statements have been prepared under the historical cost convention, as modified by the revaluation of investments to market value. The accounts (financial statements) have been prepared in accordance with the Statement of Recommended Practice: accounting and reporting by charities preparing their accounts in accordance with the Financial Reporting Standard applicable in the UK and Republic of Ireland (FRS 102) issued on 16 July 2014 and the Financial Reporting Standard applicable in the United Kingdom and Republic of Ireland (FRS 102), and the Charities Act 2011 and UK Generally Accepted Practice as it applies from 1 January 2015.

1.2. Reconciliation with previous Generally Accepted Accounting Practice (GAAP)

In preparing the accounts, the trustees have considered whether in applying the accounting policies required by FRS 102 and the Charities SORP (FRS 102) a restatement of comparative items was needed. At the date of transition, in applying the requirement to recognize liabilities arising from employee benefits, no material liability was recognized in respect of employee entitlement to paid annual leave. No other restatements were required.

1.3. Income and expenditure

All income and expenditure is accounted for on an accruals basis.

1.4. Tangible fixed assets and depreciation

Depreciation is provided at rates calculated to write off the cost less residual value of each asset over its expected useful life, as follows:

Fixtures, fittings and equipment	-	20% Reducing Balance
Motor vehicles	-	25% Straight Line

1.4. Stock

Stock is valued at the lower of cost and net realizable value.

1.5. Pension costs

The charity operates a defined contribution pension scheme. Pension charges represents the amounts payable by the charity as its contribution to the fund in respect of the year.

1.6. Governance & support costs

Governance & support costs are the direct costs of administering the Branch. The charity has no office property costs.

1.7. Expenditure on charitable activities

The analysis of expenditure by charitable activities to further animal welfare in this report identifies the direct operational costs and the support and governance costs described above.

The notes on the following pages form an integral part of these accounts.

ROYAL SOCIETY FOR THE PREVENTION OF CRUELTY TO ANIMALS

Notes to the Financial Statements for the year ended 31 December 2016

..... continued

1.8. Expenditure on raising funds

Fundraising costs include the full cost of operating our retail outlets.

2. Tangible fixed assets

	Fixtures, Fittings & Equipment	Motor vehicles	Total
	£	£	£
Cost			
At 1 January 2016	58,598	13,507	72,105
Additions	917	13,908	14,825
Disposals	-	(13,507)	(13,507)
At 31 December 2016	<u>59,515</u>	<u>13,908</u>	<u>73,423</u>
Depreciation			
At 1 January 2016	53,965	12,936	66,901
Charge for the year	1,244	4,047	5,291
Disposals	-	(13,507)	(13,507)
At 31 December 2016	<u>55,209</u>	<u>3,476</u>	<u>58,685</u>
Net book values			
At 31 December 2016	<u>4,306</u>	<u>10,432</u>	<u>14,738</u>
At 31 December 2015	<u>4,633</u>	<u>571</u>	<u>5,204</u>

3. Debtors

	2016 £	2015 £
VAT Repayable	2,537	3,708
Debtors and prepayments	9,296	21,851
	<u>11,833</u>	<u>25,559</u>

4. Creditors: amounts falling due within one year

	2016 £	2015 £
Trade creditors	11,910	17,835
Accruals	2,558	2,632
	<u>14,468</u>	<u>20,467</u>

The notes on the following pages form an integral part of these accounts.

ROYAL SOCIETY FOR THE PREVENTION OF CRUELTY TO ANIMALS

Notes to the Financial Statements for the year ended 31 December 2016

..... continued

5. Unrestricted Funds

Unrestricted funds comprise those funds which the trustees are free to use in accordance with the charitable objects.

All funds are Unrestricted.

6. Shop Income & Expenditure

Shop	Princes Risborough	Chesham	Burnham	Amersham	Total
	£	£	£	£	£
Income	32,718	58,875	76,516	18,479	186,588
Expense	23,329	51,922	24,458	21,486	121,195
Surplus	9,389	6,953	52,058	(3,007)	65,393

The notes on the following pages form an integral part of these accounts.

ROYAL SOCIETY FOR THE PREVENTION OF CRUELTY TO ANIMALS

Notes to the Financial Statements for the year ended 31 December 2016

.....continued

Shops Detailed Consolidated Income & Expenditure

	2016		2015	
	£	£	£	£
INCOME				
Donated goods	174,615		176,312	
Merchandise	5,337		5,770	
Cards	3,509		3,469	
Fundraising	3,127		2,896	
Grant – Burnham PC	-		1,521	
		186,588		189,968
EXPENDITURE				
Purchases	6,453		6,660	
Rent and rates	51,302		57,006	
Light and heat	3,481		3,930	
Repairs & Maintenance	5,785		1,719	
Insurance	1,476		1,785	
Wages	48,188		43,437	
Pension Contribution	73		0	
Telephone	1,102		1,389	
Postage and stationery	272		285	
Cleaning	414		440	
Sundry expenses	303		374	
Credit card expense	1,664		1,898	
Depreciation	682		644	
		121,195		119,567
SURPLUS		65,393		70,401



South Bucks

Charity No: 243352

South Bucks RSPCA Annual Report 2016

A photograph of a brown dog, possibly a Weimaraner, sitting on a wooden fence. The dog has a white patch on its chest and is wearing a red collar with a silver tag. It is looking off to the side.

From neglect to perfect pet

The RSPCA only exists because of public donations

Branch objectives and public benefit statement



Animals in our care receive veterinary treatment, vaccination, neutering and microchipping prior to re-homing, which help to control the incidence and spread of disease and suffering.

We re-home animals at a modest cost to people who are able to give a home to a companion animal. A companion animal brings measurable benefits to people's health and wellbeing including mental health, which is a subsidiary and significant benefit to the main charitable aim of the service to reduce animal suffering. The Branch takes in lost cats and small animals and seeks to reunite those pets with their owners, which benefits the local community.

Within the terms of our governing document, we support the National Society and other RSPCA branches by providing assistance in connection with homeless animals. The Branch also provides volunteering opportunities for over 240 people. This benefits local people by providing opportunities to improve skills and experience whilst working for an organisation that promotes greater compassion and understanding of animals.

YOUR BRANCH COMMITTEE 2016



Chair: Declan Harney

Email: Chair@rspca-southbucks.org.uk

Secretary and Volunteer co-ordinator:

Jill Grimwood

Email: Secretary@rspca-southbucks.org.uk &
Volunteers@rspca-southbucks.org.uk

Treasurer: Simon Plummer

Email: Treasurer@rspca-southbucks.org.uk

Dog re-homing co-ordinator: Heidi Free

Email : dogs@rspca-southbucks.org.uk

Shops co-ordinator: Sarah Pollard

Email: Shops@rspca-southbucks.org.uk

Cat re-homing co-ordinator: Britta Lams

Email: Cats@rspca-southbucks.org.uk

Education and communications:

Pat Bryant Email:

Education@rspca-southbucks.org.uk

General committee member: Diane Milner

General committee member: Cheryl Watson (co-opted Dec 2016)

Useful Contacts

Small animals co-ordinator & Membership:

Heather Gobran

Email:

Smallanimals@rspca-southbucks.org.uk

Membership@rspca-southbucks.org.uk

RSPCA CRUELTY LINE

0300 1234 999

Re-homing

Dogs and Cats: Tel: 0845 3707526

Small Animals: Tel: 01494 863009

Welfare: Tel: 0845 3707525

RSPCA South Region

Wilberforce Way, Southwater,
Horsham RH139RS

Websites:

www.rspca-southbucks@org.uk | www.rspca-buckinghamshiresouth.org.uk

Follow us on Facebook and Twitter:

www.facebook.com/SouthBucksRSPCA | Twitter: @RSPCASouthBucks

Special Thanks

Tracey Gibson - Annual Report Layout and Design

Jill Grimwood - Editor

This perfect pet did not have a perfect start to life as Flossie was one of a litter that was advertised on the internet. After 2 days with her new owner she became very unwell was taken to a local vet coughing and shivering and unable to stand. She was admitted to the animal hospital where she spent the next 3 days receiving treatment. She then came into the care of South Bucks RSPCA and was placed in a foster home with Jenny and her family. Her recovery continued with lots of love, care and good food. She learnt how to socialise with other dogs and enjoyed her daily walks. While in foster care she became the best of friends with another little foster canine called Daphne. They adored each other, as you can see by the lovely photos. After six weeks in our care Flossie was ready to move on and found her forever home with the Johnson family. In her new home she had a new friend in Sophie the dog who was adopted in 2015 also from South Bucks RSPCA



When it was time for Flossie to be spayed she again met up with Daphne at the vets who was also booked in to be spayed on the same

day, they remembered each other and the vet allowed them to recover after surgery together in the same kennel.

A few words from The Johnson Family

Flossie became available at the right time for us. We had previously had Rosie and Sophie from South Bucks RSPCA. Tragically Rosie suddenly became ill and had to be put to sleep, at only three years old, which was heartbreaking for us. Our other little dog Sophie, became very sad and withdrawn when we lost Rosie. We then set about looking for another dog to keep her company. Flossie had been handed into a local vet in a really bad state, she was treated at the vets for a few days, and then went off to Jenny the fosterer. Jenny had Flossie for a number of



weeks and did a really fantastic job with her. We went over to Jenny's house and decided there and then that Flossie was perfect for us. A few days later we bought her home. Sophie was a bit wary of her to start with, but now they are the best of friends. Flossie is a beautiful, kind and loving dog, she loves other dogs, people and children so could not ask for more. She is a bit big for a cuddle but she is partial to one now and again. She was off the lead from the first day we brought her home as her recall is really good. She is just the best dog. Thank you for finding her for us, we love her to bits.

In 2016 the committee has met each month and we have worked together to further our main aims concerning the welfare and care of animals in South Bucks. This will always come first, along with fulfilling our obligations related to branch activities. We always try our best to provide all the support expected of us and this is carried out by our animal coordinators Britta Lams, Heather Gobran, Heidi Free and Joan Johnson. I know they in turn will always provide assistance to our RSPCA inspectors who rely on our help locally. Our thanks go to the animal co-ordinators for all of their help this year.

Jill Grimwood became secretary to the branch after the AGM and has also retained the job of recruiting volunteers. We have not taken on anyone to coordinate fundraising. Simon Plummer continues as Treasurer and has been bringing our financial practices up to date. Sarah Pollard continues to manage the shops and their excellent results are explained elsewhere in this report. Pat Bryant deals with communications and is one of our Education Ambassadors.

We also owe thanks to many others not on the committee – including Pat Edgar for her help with PR, Tracey Gibson and Helen Beech who keep our websites up to date.

At our AGM in June 2016 the committee were asked to consider how to utilise excess funds built up in the branch since 2012 and to put these funds to use. Heidi Free has introduced a Neutering

Outreach scheme and the branch now offers assistance in neutering throughout the year instead of just at our annual Animal Action Day. We offer a reduced rate, agreed with local vets, and owners are required to make a contribution. We also offer micro-chipping at a competitive rate.

In April the committee was given a presentation by our 'Education Ambassadors', Pat Bryant, Helen Beech and Elaine Richardson. The presentation was light-hearted and informative without being treated as a fundraising opportunity, which we did not want. The 'Education Ambassadors' are available to make this presentation to schools in our area.

As we signaled last year we have replaced our ancient Nissan Van with a Peugeot Boxer Van. Delivery was finally taken in July and everyone involved with the van seems to be very pleased with it. It is bigger than the previous van and has mod cons, including satnav. Julie Holland's husband, Andy, very kindly cleaned up the old van and sold it for us.

We surrendered the Amersham shop lease back to our landlords in July, when our lease expired. We were required to undertake a very high level of renovation under the terms of the lease which, with a lot of effort from Sarah Pollard, our shop managers and some contracted assistance was achieved. With hindsight, it is very

clear to us that the terms of this particular lease would not be acceptable to us today. We may even have handed the shop back in better condition than it was when we took it on. The Chesham shop lease is up for renewal in 2017.

The committee have co-opted Cheryl Watson. Cheryl has hands on HR experience which we believe will be useful to us. She has proved to be a useful additional resource on our committee.

Joan Johnson has finally decided that it is time to retire from her frontline welfare role, however continues her outstanding work with feral cats. Her retirement was in December and this will be a big loss

to the branch because, as everyone knows, Joan has been a stalwart for so many years. We have the funds to offer to people in need who require assistance with vet bills.

Finally thank you to all of our members and volunteers who support our branch. While we all seem to lead much busier lives nowadays there is still a need to find time in our hearts for animals that, without us, would not be taken care of, would not have caring homes or would not get veterinary treatment when they were in need, sometimes desperately so. That is what we on the committee want to do and we need the help of our supporters and members to do this.

Declan Harney. Chair

doxdirect.com
the easy way to print



We love animals at Doxdirect, so if your pet ever goes missing we'll print free posters to help you find them. Visit doxdirect.com/free-missing-pet-posters for info. x



The Royal Society for the Prevention of Cruelty to Animals was founded in a London coffee shop in 1824. It was established by a group of reformers led by Richard Martin MP, William Wilberforce MP and the Reverend Arthur Broome. Back then, the RSPCA was the SPCA - Society for the Prevention of Cruelty to Animals. Royal patronage followed in 1837 and Queen Victoria gave permission to add the royal R in 1840, making the RSPCA as it is known today. The purpose of the Society is to end cruelty and promote kindness to animals and to alleviate their suffering.

The National Society is divided into two regions in England, and there is the Wales region; each region has a number of branches, which are independent registered charities in their own right but come under the auspices of the National Society. Some branches have clinics and animal centres. All branches support the work of the inspectorate and by providing accommodation for animals that are at risk, and assessing those animals so that suitable homes can be found for them. Branches also take in animals that are unable to stay with their owners for a variety of reasons.

South Bucks Branch was established in 1964 after Buckinghamshire Branch was split into North and South, and covers from Chesham, Amersham, Gerrards Cross, Marlow to Princes Risborough. The Branch has three charity shops providing much needed funds to support our work re-habilitating and re-homing animals. The Branch does not have a homing centre but works with a network of volunteers who take in abandoned and unwanted animals, fostering and assessing them for re-homing. The majority of dogs are housed in boarding kennels; puppies, pregnant and / or sick dogs are placed in foster care to receive the special care and attention they need. The cats, kittens, rabbits, guinea pigs and other small animals are all placed in short-term foster homes.

**WENDOVER HEIGHTS
veterinary centre**
cats • dogs • small pets • birds & exotics





Pet Club
Save money and spread
the cost of your pet's*
regular recommended
healthcare

Tring Road, Halton,
Aylesbury, Bucks,
HP22 5PN
Plus branch surgery in Gt Missenden

Pet shop
Canine Hydrotherapy
Cats, dogs & small pets
Birds and Exotics
Equine Clinic

* Plans available
for dogs,
cats and rabbits

01296 623439
Appointments & 24hr emergency

www.whvc.co.uk

RSPCA Inspector's (E5 Group) report for 2016



(E5 Group covers five branches over Bedfordshire, Buckinghamshire, Hertfordshire, and Oxfordshire)

2016 was another busy year for E5 with a 10% increase in overall complaints totaling 4229 on 2015. Collections were also up at 4023. A total of 43 cases were started with 31 proceeding to the prosecutions department for consideration. Of these 8 resulted in a conviction, and 11 were dealt with by Adult caution. Manpower within the group remained static up until June when Insp Helen Mead transferred into the group from North Wales and started work in the Hertfordshire patch. Helen brings with her a great deal of experience when dealing with Equines which will help her with the numerous horse complaints received in that area. Myself and Inspector Jaime Godfrey have now joined the regional flood team and bolstering the group to a total of 3 flood trained officers. Sadly 2016 saw our longstanding Superintendent Kelly Rivers leaving the Society in December. His replacement Karen Colman started on January 16th and we wish her every success.

Cases in Oxfordshire

Inspector Andy Eddy dealt with an emaciated collapsed horse that sadly died after the owner had failed to check on it for a number of days. Despite having a strong case for bringing a prosecution against the owner she was given a caution due to her age and other mitigating factors.



A nice story from Oxford last Summer was about the cat called "Gizmo" He went missing in August 2015 and his heartbroken owner had to return to Belgium two months later. In June 2016 a local resident reported Gizmo to the RSPCA as a stray and Inspector Andy Eddy found the cat to be microchipped. After several days trying to trace the owner they were eventually notified and they flew over the same week to collect Gizmo.

Buckinghamshire

Inspector Jaime Godfrey was called to deal with a case on the Bucks/Oxon border which involved 12 cross breed pugs being kept in a small caravan in absolutely horrendous conditions. The waste and rubbish inside the caravan reached halfway up the door. The owner decided to plead not guilty so the case went to trial. The owner eventually received a two year ban on keeping dogs





Hertfordshire

Without doubt the single worst case dealt with in our group played out in the courts during 2016. This was the case involving a family from Redbourne. In late 2015 E5 Officers Kirsty Withnall and Lauren Bailey attended the farm to investigate what was initially thought to be a minor welfare matter concerning a number of horses. They soon discovered to their horror the full extent of the suffering that was taking place. Several horses and 2 goats had to be humanely destroyed on site and over forty dogs and a domestic cat were rescued from absolutely filthy conditions.

Two members of the family were finally found guilty of causing unnecessary suffering to a number of horses and goats and both received ten week suspended prison sentences, a three year ban on keeping horses and goats plus joint costs of over £20,000. A third defendant received a community order for 150 hours of unpaid work plus a two year ban on keeping any animal and £2000 costs. A truly shocking case that received widespread publicity and was handled brilliantly by everyone in the group at the time.

Bedfordshire

One of the most shocking cases that Inspector Mel Fisher dealt with was the case involving a male German Shepherd dog called "Heinzy" that had been left with an untreated open wound. The dog had to be put to sleep and the awful pictures of the wound cannot be shown. The owner received a life-time ban on all animals.



Inspector Mel Fisher also dealt with a particularly difficult case involving 11 cats at a property in Luton. Despite trying to offer help and advice to the owners so that they could get the cats treatment, they tried to hide some of the cats that were clearly suffering. The case was concluded by Adult Caution after all of the cats were signed over.



RSPCA Inspector's (E5 Group) report for 2016



Another case of Inspector Fisher's involved the poor unfortunate dog called "Tyson" pictured below. Tyson was found in an emaciated condition with no food available. The owner was successfully prosecuted and received an 8 week suspended custodial sentence and three year ban on keeping all animals.

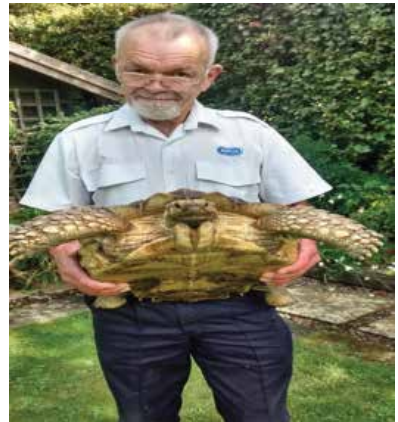


Rescues

ACO Kate Wright was also very busy rescuing animals in the group including this unfortunate badger that had fallen into an empty sewage tank in Radlett. It was released shaken but not stirred.



ACO Dennis Lovell had an unusual call to this rare Sulcata tortoise that was found wandering around in the streets in Oxford. The owners had gone away on holiday and not realised it had escaped. It was signed over and is now living happily in a sanctuary.



As always I would like to take this opportunity to thank all the branch volunteers for all the invaluable help and assistance they have given my team during 2016. It would be almost impossible to carry out the work we do without your help, and on behalf of everyone in E5, thank you and well done for all of your extremely hard work and dedication. We all look forward to working together again in 2017.

Rob Hartley - E5 Chief Inspector

Cats and Kittens Report

A look back onto 2016!



In 2016 we have helped 92 cats and kittens. I wish I could write something different this year but unfortunately not a lot has changed. The number of cats we were asked to take in are getting less and less and we also took in fewer kittens than in previous years. However, the number of cats and especially kittens being sold on the internet and social media is going up, and so are the amounts people ask for them. The worrying questions remain: where do these cats and kittens eventually end up? Will they be sold again and again? Will the new owners breed from them or even worse? The answer perhaps lies in the fact that some of the cats we rehomed had unfortunately already been passed on from several owners, mostly via social media and/or the internet. At least by finally coming into our care we can stop them from being passed around any further by finding them their forever home. Here are some of the stories of the cats and kittens we helped in 2016:

Tom

In May we were asked to take in a young male as the owner was unable to take his cats to their new home. As he was a big unneutered male we called him Tom. On arrival we noticed that one of his eyes looked slightly red. Unfortunately, even after several trips to the vets and various courses of eye drops the eye problem persisted. The vet thought it was due to an old eye infection which was never treated. His behaviour was also extremely antisocial: he would hiss and lash out

and turn his back to us when we tried to stroke him. His behaviour no doubt was made worse by us having to constantly put eye drops into his eye. It became evident that he had not been handled or in fact looked after by his previous owner. As his eye did not improve nor bother him the decision was taken to rehome him as he was. It took several months for Tom to finally enjoy being stroked and for him to relax and eventually purr. He has now been rehomed and is spoilt rotten and much to our surprise he has turned into a complete lap cat who enjoys sleeping on his owner's bed at night time. What a complete turnaround!!



The “bucket kittens” & Toby

In September last year one of our local vets asked us for our help as a member of public brought in 3 kittens found in a bucket of water. As they were only 3 - 4 weeks old, there was no way they could have managed to get inside the bucket by themselves. Sadly 1 of these kittens died before coming into our care and soon after we took the remaining two in, we lost another one.

However there was one little fighter: a little tabby boy we named Thomas. 2 weeks later the same fosterer who was looking after Thomas took in another kitten which had been found abandoned in a field and covered in maggots. He was all black with a sliver/grey tummy and we called him Toby. Despite a few weeks difference in age, these 2 kittens became good friends and were later rehomed as a pair to a wonderful family as you can see from the pictures.



Here are some other kittens we rehomed in 2016



A quick update of our golden oldies:

In 2016 we sadly had to say farewell to Twinkle (aged about 20) and Matilda (aged about 18 year). As you can see both lived to a great age because they had such good care and happy lives! A new addition to our permanent foster cats is Cinders and here is her story:

Cinders came in via an inspector because a member of public reported her fitting in their garden. She was in a terrible state when she first arrived: very skinny (she weighed just over 2 kilos), had fleas and several open and infected wounds on her neck, a lot of fur loss and was always itching (see picture). At first it was thought to be severe flea allergy but she continued to itch after having received treatment for this. She was tested for various things including food allergies but unfortunately the vets could never get to the bottom of her condition. She was thought to be around 10 years old. With daily doses of Piriton and steroids her condition finally stabilised, she put on some weight, her fur grew back in most places and her fitting was getting less frequent.

Her fosterer fell in love with Cinders and decided to take her on as a permanent foster cat. She will be on medication for the rest of her life but is definitely now much more comfortable and a happy girl as you can see in the picture.



As always I would like to thank our fantastic team of fosterers: Angela, Anne, Anthea, Bryan, Elaine, Jacqui, Jill, Josh, Liz & Dave, Pat M., Sarah P. and Sarah M for all their hard work in 2016. Josh McGee decided to go travelling and Sarah Murray and Jacqui Langley both adopted cats from us and are now unable to foster for us. However we had 3 new additions to the team: Sally Harvey, Emily Bell and Aiyana Curtis. If all our foster spaces are taken up with cats and kittens, the staff from Joes Folly, will always find a place for them.

My sincere thanks also to Joan who helps to supply all our fosterers with litter, prescription food, medication and paperwork and Paul the driver who delivers these supplies. I am also very grateful to Gordon who helps out with cat transfers at a moment's notice, Tracey for looking after our website, Helen Beech for updating the national website, Pat Bryant for keeping the shop windows up-to-date and Angela for looking after our lost and found cats.

I would also like to thank our wonderful team of vets and their staff from Temple End Vets, Crossroads Vets, Wendover Heights, Goddards, Spinz & Nash and The Wheelhouse for looking after our animals and supporting us.

Last but not least my thanks go to our excellent homing team i.e. those who are manning the phones, all our home checkers, our highly talented photographers and those responsible for all our PR and advertising including social media.

I am sorry if I have missed anybody out but please rest assured the cats and I are extremely grateful to everybody who plays a part in helping the cats in our care. No doubt 2017 will be another tough year with many more challenges ahead but I hope I can count on your support once again!

Thank you very much

Britta Lams - Cat co-ordinator, and Permanent Cat Foster Co-ordinator

CAT & KITTEN FOOD URGENTLY NEEDED!

all donations to be given to our Chesham,
Burnham or Princes Risborough
charity shops please



We are happy to report that we have treated 51 cats and 55 dogs on our welfare scheme during the year, slightly less than last year due to the fact that all neutering is now undertaken separately. As ever, we had a wide variety of problems from bad teeth to a broken pelvis and, of all things, a little dog that had completely swallowed a ball!.

One case was really unique. Rachel, one of our Inspectors asked if we could help an owner who was agoraphobic. His dog, Stella, a 7yr. old Staffie had a lump on her lower chest and needed to see a vet. The owner never went out, and did not have a phone. He had a friend who walked Stella, but could not cope with a vet visit. Everything with the owner was done by e.mail; thank goodness for the new age! Rachel and her A.C.O managed the transport for the visits to the vet, so with everyone working as a team we managed a difficult situation. The lump was benign, the owner overjoyed and could not thank us enough, and it gave us all quite a boost.

Another case was a 3yr. old Torty cat called Mavis. Her owner rang one morning very agitated and upset as the cat had given birth to 3 kittens the day before. Since then she would not stop yelling and crying, pacing up and down, plus her stomach was hard. This sounded serious, so a quick trip to the vet where it was revealed that all was well....Mavis was a first time mum and was just completely stressed out. I had not experienced this before, and am glad to say that within 24 hours she was back to normal, nursing her new family. Our help is available for any owner on benefits or very low income, it is mainly monetary but in some cases good advice on animal care is all that is needed. People are very grateful and in a lot of cases will offer a contribution towards our costs.

We work very closely with our vets who always spare the time to discuss cases, costs, and on going treatment. A very big 'thank you' once again for all your help and support. Our colleagues at the walk in clinic of the Hillingdon Branch have once again given us huge support during 2016. They saw 70 cats and 68 dogs from our area only charging us a very low nominal fee. To Katie, Jackie, and all the staff, words are inadequate for all the help you give to our animals, and if they could speak they would say a very big 'thank you' to you all.

Joan Johnson.
Welfare Co-ordinator

WHERE HAVE THEY ALL GONE ??

Our last busy year was 2013 and since then the number of sightings each year has dropped dramatically. Usually in the summer months we have the mums with their litters, but not one this year. What has happened is a complete mystery as we know they are out there..... somewhere.

During 2016 we only neutered 2 cats, plus one 5 month old kitten, and spayed 4. They were all returned to site and all have kind people looking out for them, so at least they are settled. We did rehome another 5, the lady has been looking after a colony for some years, but ill health has meant giving them up. Our colleagues in W.1 who have a huge network of farms and stables across the country came down, collected and rehomed them,..... a happy ending.

My feral team have been out of work but happily helping out the Branch in other ways until needed again.

Very many thanks to our local vets, Crossroads and Temple End for all their help and support. We can not make advance appointments for these wild creatures, and they will always see them at very short notice, invaluable.

Joan Johnson. Feral Cat Co-ordinator.

Update on my Wild Guests

Another Winter almost over which, I am glad to say, has not been at all bad. I do worry about Midge, Leo, and Mystery out in all weathers, so I always make sure there is plenty of warm bedding and shelter for them. However, like all cats, they choose their own spots.

This year it has again been my wrought iron plant troughs, which are on legs under the bench in the greenhouse looking just like three cots. Three in one bed is often the case, and what could be more warm and cosy, convenient too, as it gives a good view through the glass to check on the weather and to see who is about....all without getting out of bed !



In the good weather it is wonderful to see them playing together and rubbing up against each other in affection. Midge and Leo are now 8yrs. old, arrived as very wild unhomeable kittens, and Mystery, who had been dumped by the roadside and who was totally wild, followed later and was accepted immediately as a loving brother.

Luckily, they all keep very well, and when I catch him Mystery gets a lovely cuddle and a good grooming. This he loves purring all the time....fantastic, as his lovely grey coat is long and very thick. The wildest cat that I have ever had is just a big baby with me.

They all stay close to home and can often be seen sunbathing on the cathouse roof or perched high in the trees watching me. How lucky I am to have them, threefold immeasurable pleasure.

Marian Wanstall.

Lost and Found report



This year a total of 77 cats were registered with us as being either lost or found, with only 26 having a microchip. Of the 52 lost cats, 19 of those were happily reunited with their owners.

There have been several local stories this year reported of cats who have been missing for up to six years, being reunited because they were microchipped - stressing just how important and invaluable it is to have your pet chipped.

The most recent of those stories was featured in a local newspaper in January this year about a beloved family cat who having been missing for three months. The family had moved home last year and it turned out that the cat had returned back to its old stomping ground about a mile and a half away. Luckily a caring couple noticed that the cat who had become a regular visitor in the area had lost weight and took it in before calling the RSPCA. Thankfully the cat was chipped and so was happily reunited with its owners.

A reminder that the National Society promotes the website PETSLOCATED.COM to assist with reuniting lost/found pets with their owners

Angela James Lost & Found Cat Co-ordinator

In a pickle? Need some help?

On Site Solutions offer a jargon free, professional accounts service for your business.

Contact us for:

- Book Keeping
- Sales & Purchase Invoicing
- Debtor Chasing
- Petty Cash
- Journals & Stock Control
- Management Accounts
- Payments & Receipts
- Bank Reconciliation
- VAT Reconciliation
- Consultancy & Training
- Payroll



ON SITE SOLUTIONS

With you from the start

T: 01628 674705

E: info@onsitesolutions.ltd.uk

W: www.onsitesolutions.ltd.uk

During 2016 we were able to take into the care with South Bucks branch 9 dogs and re-homed 8.

The number of dogs now being helped by the charity has again fallen, this has happened due to so many pets changing owners using online sites and social media. Sadly many of these dogs and puppies come with poor health or behaviour issues

Yet again the number of dogs that we were asked to help has fallen, again to people selling, giving away and purchasing via social media.

One of these puppies is our front cover girl Flossie. Read her story on page 1.

Another story involving Jean 9 year old Jack Russell & Olivia 3 year old Jack Russell, both of these girls were obtained online, by a member of the public who sadly could not continue to take care of them so they came into our care. These lovely girls came with issues, Jean was very protective over food and possessions and bullied

Olivia who's personality could not blossom. Once in foster care we became aware of these issues and it also became obvious that both of these dogs had spent much time confined and used for breeding. Neither were toilet clean or understood what was asked of them. Both were spayed and day by day they started to learn what life was all about, they enjoyed their walks and time spent with other canine friends. It was decided that both of these girls would benefit from living separately. Jean has found her new forever home, Olivia is still waiting.



Billy

Billy, a 10 year old Yorkshire terrier, who was found wondering the streets neglected, covered in fleas. His owners never came forward to reclaim him so he came into our care. Billy was very sensitive and protective of his face and mouth. His eyes were very sticky and his fur would benefit from a trim. On his visit to the vets it became obvious that he needed dental work desperately so this was booked and he had to have 12 teeth removed. He was then fostered by Jenny who treated Billy with respect but he still has his protective issue over his face, not easy when he needed eye ointment and his face washed every day. Jenny did not give up and she is the boss. Billy needs to be understood and he needs to trust the person that is caring for him 100 %, so this helped us to come to the decision that the best thing for Billy was to stay with Jenny & her family. He is a comic and loved by all his family including his canine friends. Still to this day raised voices and being handled can be very stressful for this little chap. He loves his walks and to have a rummage in the woods and a quick run around the football pitch.



I would like to say a BIG thank you again to Jenny and her family for all their care & understanding that they have given during 2016. I could not manage without you.

Thank you to Temple End & Crossroads vets for all your help during 2016.

Thank you to our fantastic homing team Elsie, Chris, Eileen, Linda and Gordon who are on duty for a week at a time. Without their help we would not be able to re-home the animals that we do. Thank you to all the home visitors and all others who have helped during 2016.

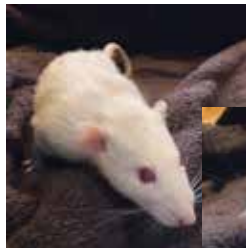
Heidi Free,
Dog re-homing co-ordinator

In 2016 we rescued 59 animals which was a great improvement on 2015 when we were only able to help 27. This increase was mainly due to the nine hens and sixteen rats that we helped.

In July, a gentleman phoned saying that he could no longer cope with his nine chickens. I do have two contacts for chickens and was just about to phone them when Lorna telephoned me. The gentleman had telephoned Chesham shop first and Lorna had taken the call. Lorna said that if the chickens were fit and healthy she would adopt them. Luckily, the chickens were in good shape and they stayed with Lorna and are now living a happy, free range life but safely tucked up in their shed at night.

Louise fosters rats for us and we took in several during 2016. In June, we took in seven male rats from a very large group. These poor rats had lived crammed in tiny hamster cages with hardly any room to move and were removed by an Inspector. Luckily, we knew of a lovely family who had just lost their rats. The family had previously adopted rats from us and we contacted them with our fingers crossed. They came and chose Rizzo and Ronnie. Rizzo was blind in one eye but they were still happy

to adopt him and offer him a loving home. That left us with a group of five. A very good friend of my son's adores rats and they live a wonderful life with him; they are 'free range' and have a room to themselves just going back into their cages to sleep and eat. I knew he had only one male left and so I asked David to contact Chris to see if he would be willing to take one or perhaps two. He came out to view them and was jumped upon by five lively rats all of whom wanted to be his best friend. How to choose? Well, he didn't and took all five. The six rats all bonded and are living happily together, and our five are enjoying a very happy life far from the awful existence that they had previously.



Pete was a ferret found wandering in a pitiful state. He was extremely thin, covered in ticks, had severe head tilt due to an ear infection, a broken tooth, ulcerated mouth and was anaemic. We were extremely worried about him and we really did not expect him to recover. However, Sam brought him into her house which was rather unpleasant as he was extremely smelly because he was unneutered. The smell did not deter Sam from helping him and he went from strength to strength. After several months, he was fit enough to be neutered 17

and Sam adopted him. He has integrated well with her other ferrets and is living a very happy life. Ferrets are gregarious animals and need to live in pairs or groups.



Very often some very sick or injured rabbits are handed into the branch. Generally, these animals are taken by Anne who nurses them back to health. Her patience and dedication are second to none and I do not know what we would do without her. Anne also oversees the bonding of the more difficult rabbits. Contrary to popular belief, rabbits are not easy to bond and can inflict serious injury upon each other if not supervised correctly. If we have any doubts about bonding, the rabbits go to Anne where they learn their manners.

Chris fosters our hamsters and gerbils. She loves them so much that she usually adopts them and gives them a loving home for the rest of their lives. This is a huge help as quite often they are elderly when they are handed into us and would be difficult to find homes for. She offered homes to two of our hamsters in 2016.

Oscar and Charlie were two young male rabbits who came in because they had been fighting. Their owner had not noticed how seriously damaged Charlie was and had not taken him to a vet. Luckily, they were fostered by Pat who immediately realised that Charlie was in serious trouble. He had a large abscess on his hip and serious injuries to his testicles. He had major surgery but, thanks to Pat's dedicated nursing, his health improved and we were able to put him on the re-homing list. Sadly, he is still waiting but we hope he will find a new home soon.



In February, Heather and Adrian fostered a young rabbit called Jerry. He was found wandering around and was the most frightened animal that they had ever cared for. On one occasion, in order to get away from them, he jumped from his run into a nearby tree – that was a first for all of us. Heather and Adrian worked patiently with him and eventually he calmed down and he went to his new home in July. It was especially comforting as he went to a home with people who had adopted rabbits from us before.



Carole, Dawn and Jenny still continue to work with us fostering rabbits that have not been offered new homes. Sometimes animals come in with social problems which make re-homing them extremely difficult. We never give up on them and they stay with Carol, Dawn or Jenny until the right family comes along.

As you can see from the above, I am lucky to be able to work with such a dedicated team of volunteers. We have been working together for many years and we all do the very best that we can for every animal that comes into our care. All I say to them is a huge 'thank you', you have made a difference to so many animals' lives.

I should also like to say 'thank you' to all the vets who support and advise us, especially when we have to make some difficult decisions. We could not function without your care and support. Finally, 'thank you' to all the lovely families who have offered homes to our waifs and strays, by helping the animal that you have adopted you are enabling us to help another.

Heather Gobran
Small Animal re-homing co-ordinator

Princes Risborough shop

2016 saw a few changes to our shop. Having spotted a shop closure in Great Missenden we were able to acquire a glass cabinet and counter at a very reduced price. Getting the new cabinets into the shop was a slightly

more tricky task for Paul, and Danny our van driver. Once in the shop we then enlisted the help of Dave Bevan who kindly stepped in to cut out the shelving and help install both units.

2016 saw the Queen's 90th celebrations which was followed by the Summer Festival theme of the Best of British. Windows were adorned with Union Jacks and kind weather at the Festival meant we were able to have stalls outside maximising sales. An American lady was delighted to be taking back to her friend who loved all things British, a selection of Wedgwood plates, Lilliput Lane cottages and Royal memorabilia. Another large sale which ended up abroad was for a couple visiting family back home who had relocated to Thailand. They were both in need of cool but smart clothes to wear for their teaching careers in



Thailand, and left the shop having spent £70 on various items to take back with them.

As always our shop is indebted to our team of volunteers. Don Stiles, who has been helping to take away our rubbish since the shop opened, to start with aided by his beautiful black Labrador Amos, decided it was time to retire and enjoy his lovely conservatory. Rose Hirschfeld although no longer able to work in the shop still continues to bring in some lovely donations. We thank them both for their contributions.

Illness sadly affected other volunteers. Jean Potocki is now back after a short break. One of our other longest serving volunteers Amy Hammond also had to take a break from the shop in November due to illness. She is missed by many customers and we wish her a speedy recovery. Whilst at home she has continued to help by making up lucky dip parcels which are always in the shop for children.

We established another contact for collecting used stamps - an elderly man who not only sends stamped addressed envelopes, but also pays a donation in cash together with a selection of new birthday cards from his son's business for every batch sent. So if you have any used British or foreign stamps please do drop them into our shop. Last year on stamps alone we received over £150.

Last but not least a huge thank you to our team of loyal volunteers

Amy, Beryl, Carole, Jean, Marion, Rosemary and newly appointed Annette.

Without you there would be no shop and we do appreciate the time and effort given.

Chesham Shop

2016 proved to be another busy year for the Chesham shop, with the donations coming thick and fast. This left us at times wondering if we would need to start to tunnel through the bags to reach the kettle to make the all important cup of tea.

Despite this, our volunteers always managed to cope and kept the stock under control.

An exciting first was a real diamond casually left in a bag of assorted goods. The diamond was the size of a grain of rice, and there was a nervous moment when, having established that it was real, the Jeweller dropped the gem on the floor. It really was like looking for a needle in a haystack. However, a search, comprising a hands and knees examination of the floor and the carpet, proved successful and it was located. Phew, that was £70 well earned. Not bad for something that must have been our smallest ever donation. At the other end of the scale we have been successful in selling a large number of sizeable pieces of furniture including retro dressing tables, sofas and lots and lots of tables and chairs. Thanks to Paul and Danny for all the heavy lifting.

The year ended with a busy Christmas stall complete with our own real live elf (Paul) who is obviously secretly desperate to pursue some kind of acting career. Paul had previously amazed the shoppers of Chesham with his Halloween outfit.

As ever, our volunteers continue to do an amazing job. Without them, we would be lost - so many thanks to Daphne, Anne, Rose, Adrian, Irene, Jo, Pete, Joan, Laurel, Heike, Jenine and Jean (with Gracie woof!) and our D of E volunteers Henry and Mildred

Burnham Shop

Let me introduce you to the Burnham Shop, my name is Julie Holland and I am the manager. Gill, Pat, Sharon, Sarah P, Tracey, Karen W, Joycelyn, Satie, Chris, Lyn, Sarah B, Nicci, Steve (who looks after the watches), and my husband Andy who is the electronics PAT tester and maintenance man, are my team of volunteers. I am very fortunate to have such a hardworking, committed team, some of whom have been here since the shop opened in 2004. Together we all form a great team.

2016 has been an outstanding year for our little shop which grows from strength to strength. A huge thank you for all the donations, often still new with their labels attached! And we are always grateful for the support of our community and customers. We have had some beautiful jewellery and watches come in to the shop including new D&G watch and a stunning Longines ladies watch that sold for £195. We started the year with the spring fair, which turned out to

be a beautiful day, and a very profitable one! I'd like to thank all the fair goers and organisers for such a great opportunity.

I have started a Facebook page "RSPCA Charity Shop Burnham" for the shop so people can see any new interesting items that come into the shop and contact me if they wish to. I have also updated Google with our contact details and opening hours. We are committed to extending our outreach via the internet to better connect with our customers.

We have also been busy keeping up with the maintenance of the shop; we purchased a lockable bin for our recycling, Andy has installed some good solid wooden storage shelves in the back room. We have a new security back door and door frame, and hopefully we will be having a new floor laid soon too.

During the year, myself with a few volunteers attended a dementia awareness course to support the village to become dementia friendly, which we all found very interesting and helpful.

The lead up to Christmas was energetic, the shops on Burnham high street were very generous giving us donations to put in our hamper which we raffled. Together with the late-night Christmas fair which was extremely busy we organised a tombola, lucky dip for the children and one for the adults. As always, our "Name the dog" was a



great success with thanks to Paul, Tracy and Chris who trailed the high street including the pubs. The total for the day was a staggering £913.

I would like to take this opportunity to thank all my customers for their custom over the last year; we are very grateful for all donations big or small. And a HUGE thank you to all our volunteers, past and present, who have worked so hard to make the shop the success it is today. I look forward to another incredible year running this wonderful shop.

Julie Holland

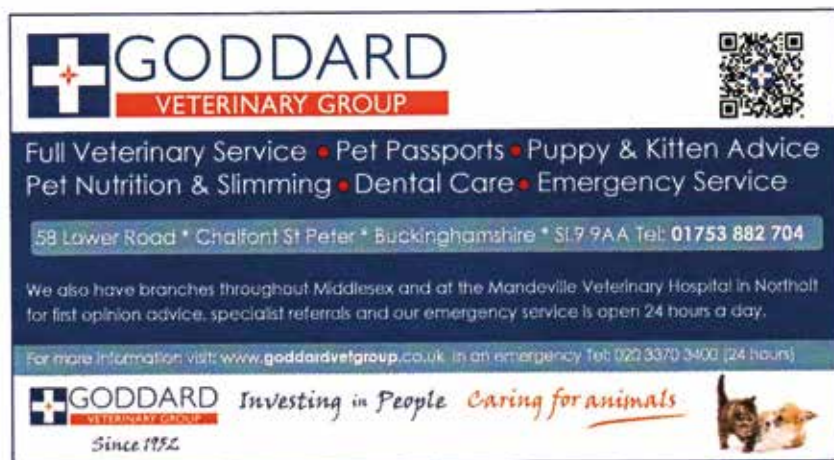
Education Workshop for Schools, Clubs and Organisations from RSPCA Education Ambassadors

As you will know, preventing animal cruelty is at the heart of everything we do and education about the needs of animals is an essential part of this mission.

Ambassadors have been trained to deliver a 30/45 minute Workshop to school assembly or classes, clubs and organisations, to encourage a fresh look at pets, farm animals and wildlife. If you invite our Education Ambassadors to give a talk, we will provide a presentation with video, handouts, interactive games and the children will learn about the importance of animal welfare, and how we can all play a part.

South Bucks RSPCA is your local branch and we have 3 Ambassadors trained to visit schools in our area.

If you are interested in organising an Assembly/Workshop, or would like to know more, please contact education@rspca-southbucks.org.uk or phone Pat Bryant on 01494 865287



GODDARD
VETERINARY GROUP

Full Veterinary Service • Pet Passports • Puppy & Kitten Advice
Pet Nutrition & Slimming • Dental Care • Emergency Service


58 Lower Road • Chalfont St Peter • Buckinghamshire • SL7 9AA Tel: 01753 882 704

We also have branches throughout Middlesex and at the Mandeville Veterinary Hospital in Northolt for first opinion advice, specialist referrals and our emergency service is open 24 hours a day.

For more information visit: www.goddardvetgroup.co.uk in an emergency Tel: 020 3370 3400 (24 hours)

GODDARD
VETERINARY GROUP
Since 1952

Investing in People Caring for animals



Volunteering for us is one enjoyable way of helping animal welfare and can be very rewarding. Our volunteers make a huge contribution to the work we do to prevent cruelty and promote kindness to alleviate suffering of animals. With such a wide range of volunteering roles available within our branch, there is bound to be a suitable opportunity for you.

Volunteering with us is a great way to meet like minded people who share the same enthusiasm for animal welfare. As a volunteer you can gain important transferable skills in fundraising, campaigning, finance, team building etc.

Anyone can volunteer, we value diversity and encourage volunteers from all sections of the community. If you would like to find out more please contact Jill Grimwood on 01494 792749 or volunteers@rspca-southbucks.org.uk.

There are many ways you can help us make a difference, no matter how much time you have available or the level of commitment you can afford to give.

Before you join us as a volunteer, you will be asked to complete a volunteer application form, attend an informal interview and provide referees for us to contact. When you start as a volunteer you will be provided with an induction programme and any training you may need to carry out the role.

Jill Grimwood
Volunteer co-ordinator

Furniture desperately needed!

To help local animals in need...

The Chesham RSPCA shop are looking for donations of good quality, second hand furniture to sell please.



Please deliver directly to the Chesham shop
or call us to arrange collection:

01494 810118



Pet Sponsorship Report



We continue to run and promote our Pet Sponsorship Scheme, where animals that are unable to be rehomed, sometimes due to medical conditions or behavioural issues stemming from ill treatment, can be supported financially in loving, long-term foster care. New sponsors receive a Welcome Pack which includes a certificate and RSPCA gifts. Full information is available on our Web site.

If you would like to find out more or get involved in our Pet Sponsorship Scheme, please contact:

Pet Sponsorship

Email: sponsorship@rspca-southbucks.org.uk



the WHEEL HOUSE
VETERINARY CENTRE
e: mail@wheelhousevets.co.uk
w: www.wheelhousevets.co.uk

Visit us at any of our locations

Chesham

Mon	08.00	-	22.00
Tues	08.00	-	19.30
Weds	08.00	-	22.00
Thurs	08.00	-	19.30
Fri	08.00	-	19.30
Sat	08.30	-	17.00
Sun	10.00	-	16.00

Amersham Road HPS 1NQ - 01494 782001

Beaconsfield

Mon	08.30	-	19.00
Tues	08.30	-	19.00
Weds	08.30	-	17.30
Thurs	08.30	-	19.00
Fri	08.30	-	17.30
Sat	08.30	-	12.00
Sun	Closed	-	Closed

1 Wheelhouse Close HPS 9NQ - 01494 722120

Chalfont St Giles

Mon	08.00	-	19.30
Tues	08.00	-	22.00
Weds	08.00	-	17.30
Thurs	08.00	-	22.00
Fri	08.00	-	17.30
Sat	08.30	-	13.00
Sun	Closed	-	Closed

London Road HPS 8NQ - 01494 821329

10 pm

Your Complete Veterinary Care

give us a call or book online at
www.wheelhousevets.co.uk

£35 off

any product or service when you register with us as a new client

valid until end of April 2018, one voucher per registration. Not to be used in conjunction with any other offer. This voucher must be presented at reception during your first visit to claim the offer.







How you can help



Your generous donations of time, money and support mean we can plan ahead and work out how best to use our resources for animal welfare.

GIVE GENEROUSLY

Donate money, visit:

www.rspca-southbucks.org.uk,

Leave us a legacy in your will,

Donate goods to our charity shops

Join www.giveasyoulive.co.uk,

selecting our branch as your chosen charity. The leading stores that have signed up then donate a commission to us on every online purchase you make.

TAKE ACTION

Rehome or foster an animal from us

Support us during RSPCA week

Nominate someone who has gone the extra mile for animals for an

RSPCA Honour, visit:

www.rspca.org.uk/honours

Volunteer for us, visit:

www.rspca-southbucks.org.uk

GET SOCIAL

Follow us on Facebook,

www.facebook.com/South.Bucks.RSPCA

Follow us on Twitter, @RSPCASouthBucks

CAMPAIGN FOR US

Take part in Simply Ask, Freedom Food's campaign to get people asking about animal welfare when eating out, visit:

www.freedomfood.co.uk/simplyask

Help us make our campaigns, such as improving pet welfare, successful by joining in debates and taking action, visit:

www.rspca.org.uk/campaigns

GO GREEN

Take unwanted goods to one of our 3 charity shops, in Burnham, Chesham or Princes Risborough



Lane Accounting Limited

Local Chartered Accountant
and Tax Advisor

A full range of accounting and tax services for individuals, the self-employed, and small to medium sized businesses.

- | | |
|----------------------------|----------------------------------|
| ■ Annual Accounts | ■ Local Charity Accounts |
| ■ Book-keeping and Payroll | ■ Financial Controller |
| ■ Income Tax Returns | ■ Business Planning and Strategy |
| ■ Corporation Tax Returns | ■ Management Accounts |
| ■ VAT | ■ Budgeting and Forecasts |
| ■ Start-up Advice | |

Call NOW for a free initial consultation

Not VAT registered so immediately **20% saving**

Tel: 01753 888785

Mobile: 07799 412650

How you can help



Your generous donations of time, money and support mean we can plan ahead and work out how best to use our resources for animal welfare.

IN YOUR AREA

RSPCA branches are run by volunteer trustees who influence how we care and prevent cruelty to animals locally. Find out about becoming a branch trustee at: www.rspca.org.uk/branchtrustee

SPEND AND SAVE

Take out More Than Pet Insurance - we receive a donation for each policy sold, visit: www.rspca.org.uk/petinsurance
Buy Freedom Food higher-welfare products

JOIN US

Become a member of the RSPCA, visit: www.rspca.org.uk/joinus
Give children aged 8-12 Animal Action Club membership, visit: www.animalaction.co.uk

FEED YOUR PETS

Buy RSPCA pet food for you cats, dogs, guinea pigs and rabbits - it's been designed by experts. Cat and dog foods are complete, meaning they contain all your pets need to keep healthy, visit: shop.rspca.org.uk/petfood

EDUCATION IS PREVENTION

Organise a talk at your local school to ensure animals have the lives they deserve, we need to build a world of compassionate, caring, informed citizens and consumers. To make this happen we work with the early years educators.



We are a very long established, traditionally owned and run veterinary practice based in

High Wycombe, with branch surgeries in **Flackwell Heath**, **Holmer Green** and **Marlow Bottom**.

Why choose us?

- Friendly and caring service
- Excellent local reputation
- Independent practice, not a chain
- We cover all our own emergency work
- Ample free parking
- New clients always welcome



SEE WHAT ELSE WE OFFER AT
www.templeendvets.co.uk

HIGH WYCOMBE	01494 522956
FLACKWELL HEATH	01494 522956
HOLMER GREEN	01494 714630
MARLOW BOTTOM	01628 488143 01494 522956

Throughout 2016 I have continued to advise the South Bucks branch on media matters as well as issue press releases and provide fortnightly editorial highlighting a cat, dog, rabbit or small animal urgently seeking their forever home for publication in the Bucks Free Press Pet's Corner column.

Thanks to the support of the local media, the branch has continued to receive regular editorial coverage so keeping it in the public eye. Many of the animals featured have been successfully re-homed as a result of this important work.

Other highlights have included full colour pages in the Bucks Free Press during February and October, each with pictures and descriptions of nine animals needing homes kindly supported by advertisements from local businesses.

In addition, various free editorials have appeared promoting the jumble sale, a pre-Christmas appeal for cat food and a feature about the branch's activities in the May issue of Hiya Bucks magazine.

Additional editorial material has been kindly supplied thanks to Kate Hayes and the branch has also increased its presence on social media with a Twitter feed and Facebook posts by Claire Fryer and Bryony Marriott.

Pat Edgar, Media Consultant



CROSSROADS VETERINARY CENTRE

Your caring, friendly, professional small animal Veterinary Practice proudly serving your community for 60 years

Consultations six days a week
24/7 Emergency on-site
(Vets Now at our High Wycombe surgery)

Operating facilities at our three surgeries
Private parking at all branches
Pet healthcare plans

Visit our online shop @ vetswycombe.co.uk

HIGH WYCOMBE SURGERY	HAZLEMERE SURGERY	WATLINGTON SURGERY
Phone (01494) 459095	Phone (01494) 218700	Phone (01491) 612799



Treasurer's Report for the year ended 31st December 2016



In 2016 the charity had sufficient funding to allow it to pay for all animal care costs and educational activities in full in the South Bucks area.

The Branch made a surplus of £22,873 in 2016 compared to a surplus of £52,953 in 2015. This reduction is due to reduced income, mainly from legacies, whilst expenditure remains close to 2015 levels. The surplus has increased our general funds from £386,570 at 31 December 2015 to £409,443 at 31 December 2016, which gives the Branch sound financial security going forward.

The surplus in 2016 includes donations and fund-raising events income of £35,417 and re-homing income of £7,323. We are very grateful to our benefactors, donors and fund-raisers for their kindness and generosity to our Branch.

Income in 2016 is £237,387 (2015: £271,787). Overall income in 2016 was at levels very similar to 2015 with the exception of legacies and grants, which were lower than last year and tend to be irregular year on year.

Expenditure in 2016 is £214,515 (2015: £218,834) and has been maintained at a similar level to 2015 despite the reduction in income. The branch policy is to maintain expenditure levels in response to need in our area and knowing that the general funds can be

utilized should the Branch fall into deficit in any annual period. Despite this the Branch generated a surplus in 2016, albeit a reduced one.

Our four shops made a combined surplus of £65,392 in 2016 compared with £70,401 in 2015. Both income and expenditure were very similar to previous year. In June 2016 the lease on the Amersham shop came up for renewal and the Trustees decided not to renew it, to close the Amersham shop and to continue with three shops for the foreseeable future. Many thanks to our shop employees and volunteers for their hard work.

The Trustees continue to keep our financial affairs under review to optimize our income and reduce those expenses we have control over so that we can continue with our welfare work for animals in South Bucks. The Branch has many loyal supporters. Every one of them has helped the Branch in some way to improve the lives of animals that come into our care. The Trustees of the Branch would like to thank you all so very much.

A handwritten signature in black ink, appearing to read 'Simon Plummer'.

Simon Plummer (Treasurer)

**On behalf of the Trustees of RSPCA
Buckinghamshire South Branch**

Statement of Financial Activities for the year ended 31 December 2016



	2016		2015	
	£	£	£	£
INCOME				
DONATIONS & LEGACIES				
Subscriptions and collecting boxes	3,134		2,547	
Donations and fund-raising events	35,417		41,088	
Legacies	658		19,375	
	<hr/>	39,209	<hr/>	63,010
INCOME FROM INVESTMENTS				
Interest receivable		2,735		
2,756				
INCOME FROM TRADING ACTIVITIES				
Re-Homing income	7,323		8,909	
Shops Income	186,588		189,968	
	<hr/>	193,911	<hr/>	198,877
OTHER INCOME				
Other income	832		1,760	
Neutering allowance from Head Office	-		384	
Grant for New Van	-		5,000	
Sale of Van	700		-	
	<hr/>	1,532	<hr/>	7,144
TOTAL INCOME		237,387		271,787

Balance Sheet at 31 December 2016



	2016		2015	
	£	£	£	£
EXPENDITURE				
DIRECT CHARITABLE EXPENDITURE				
HQ quota	1,100		1,100	
HQ animal food & equipment	-		98	
Kennel fees	11,342		14,543	
Veterinary fees	35,931		40,465	
Veterinary supplies	3,479		3,147	
		(51,852)		(59,353)
EXPENDITURE ON RAISING FUNDS				
Advertising & fund raising	5,820		7,454	
Telephone	1,183		1,347	
Van expenses	3,440		3,359	
Repairs and equipment	823		236	
Storage	2,036		1,525	
Printing, stationery, and postage	1,378		1,311	
Bank charges	901		1,034	
Shops Expenditure	121,195		119,567	
		(136,776)		(135,833)
GOVERNANCE & SUPPORT EXPENDITURE				
Wages & salaries	18,740		20,248	
Pension Contributions	29		0	
Depreciation	4,609		704	
General expenses	281		675	
Legal & professional fees	1,027		1,021	
Accountancy	1,200		1,000	
		(25,886)		(23,648)
TOTAL EXPENDITURE		(214,514)		
(218,834)				
Surplus for the year		22,873		52,953
Surplus brought forward		386,570		333,617
SURPLUS CARRIED FORWARD		409,443		386,570

Balance Sheet at 31 December 2016



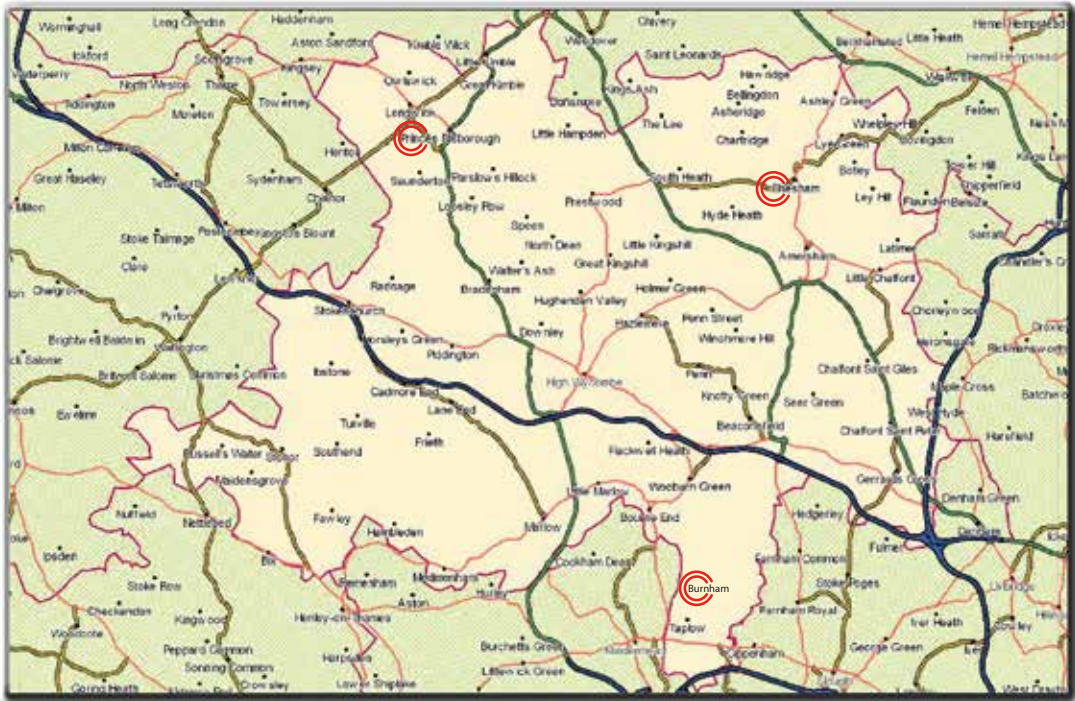
	2016		2015	
	£	£	£	£
Fixed Assets				
Tangible assets		14,738		5,204
Current Assets				
Stocks	2,013		2,524	
Debtors and prepaid expenses	11,833		25,559	
Cash at bank and in hand	395,327		373,750	
	<u>409,173</u>		<u>401,833</u>	
Creditors: amounts falling due within one year	(14,468)		(20,467)	
Net Current Assets		<u>394,705</u>		<u>381,366</u>
Total Assets Less Current Liabilities		<u>409,443</u>		<u>386,570</u>
Funds				
General funds brought forward		386,570		333,617
(Deficit)/Surplus for the year		22,873		52,953
GENERAL FUNDS CARRIED FORWARD		<u>409,443</u>		<u>386,570</u>

These accounts were approved by the board of trustees in April 2017 and signed on their behalf by:

 Jill Gimwood (Secretary)

 Simon Plummer (Treasurer)

South Bucks Branch 2016 Annual Report



South Bucks RSPCA, 47 High Street, Chesham, HP5 1BW

South Bucks RSPCA Shops

47 High Street
Chesham
HP5 1BW
01494 810118

Open Saturday:
9.30 - 16.00

68 High Street
Burnham
SL1 7JT
01628 663040

Open Saturday:
9.30 - 16.30

10 High Street
Princes Risborough
HP27 0AX
01844 345346

Open Saturday:
9.30 - 14.00

All shops are open Monday to Friday 9.30am – 4.30pm

We take furniture donations at the Chesham Shop, and all other donations at all shops.

South Bucks Branch 2016 Annual Report



Some of the animals rescued in 2016



Jasper & Oscar



Pedro



Billy



Olivia



Oscar



Pete