

ASHFORD BAPTIST CHURCH

With a Mission at Boughton Aluph



Ashford Baptist Church

ANNUAL REPORT AND ACCOUNTS

2016



Ashford Baptist Church

St John's Lane ▪ Ashford ▪ Kent ▪ TN23 1PS

Tel:01233 625542 ▪ Website:www.ashfordbaptist.org.uk ▪ Email: office@ashfordbaptist.org.uk

Ministers: Rev Lorna and Rev Rob Sylvester

Legal and Administrative Information (as at 31 December 2016)

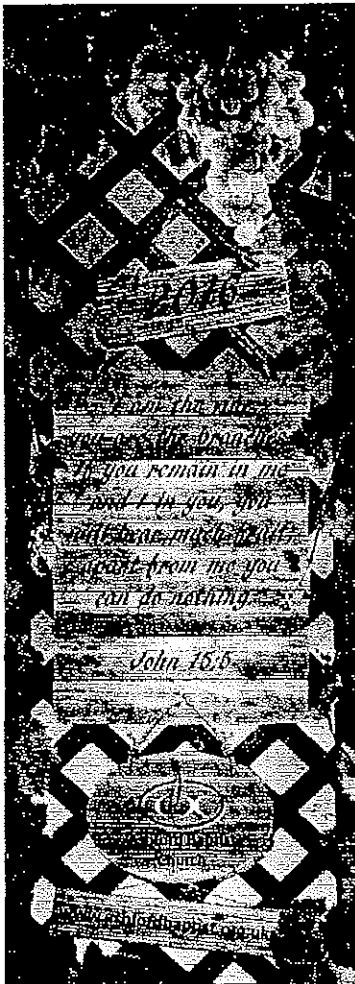
Trustees	The Baptist Union of Great Britain who have delegated responsibility for the general working to the Diaconate.	
Minister	Rev Lorna Sylvester and Rev Rob Sylvester (1.6.2015)	
Secretary	Margaret Woollven (re-elected from 1.1.16)	
Administrator	Rebekah Butler (appointed April 2016)	
Deacons	Bridget Sercombe (re-elected 1.1.14) Jane Martin (elected 1.1.15) Derrick Sercombe (re-elected 1.1.14) Jamie Phipps (re-elected 1.1.15) Adele White (elected 1.1.15)	
Treasurer	Peter Mellowship (re-elected from 1.1.16)	
Registered Charity Number	1130593	
Principal Address	Ashford Baptist Church Saint John's Lane Ashford, Kent TN23 1PS	
Governing Document	Deed of Trust held by Baptist Union	
Independent Examiner	Mr David P Brookes 59 Rylands Road Ashford, Kent TN24 9LR	
Bankers	HSBC Bank plc 39 High Street Ashford, Kent TN24 8TG	Lloyds Bank 81 High Street Ashford, Kent TN24 8SS

Ministers Review of 2016

We began the year with our covenant service and prayer, thanking God for his faithfulness and goodness to us and his church down the generations and inviting each person to come forward to the front of the church and place a stone to make a prayer cairn as an offering of our lives together to Jesus. We used the Methodist covenant prayer

I am no longer my own, but thine.
Put me to what thou wilt, rank me with whom thou wilt.
Put me to doing, put me to suffering.
Let me be employed for thee or laid aside for thee,
exalted for thee or brought low for thee.
Let me be full, let me be empty.
Let me have all things, let me have nothing.
I freely and heartily yield all things to thy pleasure and disposal.
And now, O glorious and blessed God, Father, Son and Holy Spirit,
thou art mine, and I am thine.
So be it.
And the covenant which I have made on earth,
let it be ratified in heaven.
Amen.

Our theme for the year was from John 15:5, about abiding in Christ, remaining and bearing much fruit in the areas of Justice, Mission, Hospitality, Inner Life, Inclusion, growing the ministry



of God in these areas in Ashford and our church community. This resulted in the continuing of the youth and children's work, brigades and elderly support, worship house groups, youth alpha and holiday club. As well as the beginning of new work of hospitality and language with refugee young people, our ESOL hospitality began on Wednesday afternoons, as well as an ESOL 5 aside football team. Additionally, the formation of a local mission team which inspired the outdoor Christmas nativity music & worship service where all the church gathered the Sunday before Christmas, along with "get in the picture event". A new addition for younger children was the Christingle event on the Friday 23rd December. 2016 saw the launch of the Transforming Work course, all stretching our horizons outside of Sunday worship, including a partnership with our neighbours from Age UK for the celebration of the Queen's 90th birthday. It was the year Street Pastors began using our church again as their base and the year when we took part in the Ashford Winter Night Shelter. Each night of the week different churches would open up their

premises to the roofless and homeless referred to us. At ABC it was on a Saturday night for 3 months beginning in December. We hosted up to 12 homeless guests who slept and ate in order to keep them safe and cared for in the coldest of nights.

In terms of Sunday worship, a series from the gospel of Luke took us up to Easter, taking some of the main themes in Luke's presentation of Jesus life and seeing its relevance for us today...Called and Sent, Faith, Prayer, Time to De Clutter (stuff possessions), Living in the Power of the Spirit, True Riches, the Sabbath, Love and Legalism. Lorna had a sabbatical couple of weeks in rural Kenya prior to Easter linking with Mary Jane Butler from Widows and Orphans in Rural Kenya. The subsequent visit of Mary Jane to talk on a Sunday to the adults and young people inspired us to the vision of making a difference through a water project in rural Kenya, in the hospital at Nambaboto. Thus the Water Project for Rural Kenya began with the very kind efforts and gifts of different adult, children and families groups in the congregation.

In Autumn and Advent 2016 we did a series on heaven -connection of heaven and earth, heaven being closer than we think, not just a place far off when we die, but where God lives now and where His throne is. There is movement and life between heaven and earth. The ancient Hebrew view of heaven as being up there and earth down there. Of this firmament, "raqia" that God made to separate the heavens from the earth, it is both the ceiling of earth and the floor of heaven. Crucially this firmament is thin almost like a membrane though which things can pass, it's not a barrier, and there is movement between heaven and earth throughout the Old Testament and ultimately in the New Testament shown in Jesus Christ coming to earth, His death, resurrection and ascension. We explored the great visions of heaven in Isaiah, Ezekiel, Daniel and Revelation.

We rejoiced and celebrated with baptisms of several young people the week after Easter and the dedication of Luna Oliver and the birth of Reuben Jakeman. It was good to welcome back to ABC the Frizelle family, Jakeman family and Laurence and Melis Wilson, all on home visits from overseas mission as well as many of our friends who work overseas. Also, the continued growth of the Nepalese fellowship now meeting on a Sunday afternoon continued to bless and encourage all. We had answer to our prayers in the appointment of our new church administrator, Mrs Rebekah Butler. However, we sadly said goodbye to several of our church family, who died in old age, Arthur Harden, Madge Billson, Mercia Jones. In March 2016, we said a formal goodbye to those members who left ABC to begin Grow Church and to our associate minister Tom Pelham.

These are only some of the highlights of 2016 alongside the comings and goings, the new arrivals, the changing pattern of Sunday evenings, and the desire to connect with the local community of Ashford, knowing that God has called us by name, brought us together at this time at ABC for a purpose, as we make ourselves fully available to him and each other. We praise God from whom all blessings flow. Amen.

Lorna and Rob Sylvester

Annual Report and Accounts for the year ending 31st December 2016.

The Deacons of Ashford Baptist Church have pleasure in presenting their Annual Report for the year ending 31st December 2016.

Trustees:

The Baptist Union of Great Britain is the Trustee of the Church and has delegated responsibility to the Deacons and officers of Ashford Baptist Church, listed on page one. These all served throughout the whole year.

Investment Powers:

The Trust Deed authorises the Trustees to make and to hold investments using the general funds. At the end of the year there was a current account held at Lloyds TSB with a balance of £32,401, and at the HSBC, the current account had a balance of £11,645, with the Instant Savings account holding £88,285.

Aims and Organisation:

Ashford Baptist Church has its Primary Aim "To propagate the Gospel and teaching of Jesus Christ and to express that teaching in practical action."

The Church operates in the Borough of Ashford, Kent, based at St Johns Lane/Station Road, and in the mission Church of Boughton Aluph. We also hold the Chapel in Brook which, though rarely used these days, we continue to maintain. It employed in 2016, joint ministers, Rob and Lorna Sylvester. In April we employed an administrator, who took the position that had been vacant since the end of July 2015. The administrator works part time, in the Church office, and helps co-ordinate the life of the Church. These were supported by five deacons, the Church Secretary and the Church Treasurer.

Review of Financial Activities and Affairs:

The Church is financially dependent on the voluntary support of its members. Gross voluntary income, receipts (including legacies) for the year amounted to £178,555. This is a decrease of £44,089 over the previous year. Regular donations were sent quarterly to Baptist World Mission and Home Mission.

The financial position of the church at 31st December 2016 showed a small loss of £437. This is a decrease of £18,478 on the previous year.

All the Church's assets are employed directly in pursuing the charitable objectives of the Church.

Payment to/in respect of Trustees:

No expenses were paid to Trustees during the year but they were reimbursed for materials and postage.

Conclusion

Financially 2016 proved to be a difficult year. With receipts falling month after month we knew that things would be touch and go until the final month. Several cutbacks had to be made and we finally ended the year with just a small loss.

We are as always, thankful to God for giving us people, whose service to Him, is seen on a day to day basis, but we must not forget those whose work is often not seen but is equally important in the running of the Church.

Our Church faces many significant challenges, especially that of a growing town. We continue to see many new people coming to our Church and pray that this will continue to happen. However we cannot sit still, but must take every opportunity to go out and give everybody the opportunity to get to know the great joy that comes from knowing our Lord and Saviour Jesus Christ. This we put to the test in December when we took one of our Sunday services to the bandstand in the town centre. The response was such that it gave us the enthusiasm to talk about repeating the experience during the New Year.

To finish, I would like to thank everybody for their support and encouragement given to me during this, my fourth year as Treasurer, especially during the first four months when we were without an administrator. The role can be both demanding and also time consuming but it still gives me a feeling of great satisfaction and makes me feel that perhaps I am, in some small way, serving the God who has blessed me in so many ways.

Trustees Responsibilities:

Under the Charities Act 1993 the Trustees are required to prepare a statement of accounts for each financial year which gives a true and fair view of the state of affairs of the charity at the end of the financial year and of the incoming resources and application of resources in the year. In preparing the statement the Trustees are required to:-

1. Select suitable accounting policies and apply them consistently.
2. Make judgments and estimates that are reasonable and prudent.
3. State whether applicable accounting standards and statements of Recommended practices have been followed, subject to any material departures disclosed and explained in the statement of accounts.
4. Prepare the financial statements on the going concern basis unless it is inappropriate to presume that the charity will continue its operations.

The Trustees are responsible for keeping proper accounting records which disclose with reasonable accuracy at any time the financial position of the charity at that time and to enable the Trustees to ensure that any statement of account prepared by them complies with the regulations under Section 42(1) of the Charities Act 1992. They are also responsible for safe-guarding the assets of the trust and hence for taking reasonable steps for the prevention and detection of fraud and other irregularities.

Approval:

This report was approved by the Deacons on Tuesday 2nd May 2017 and signed on their behalf.

.....

.....

Peter Mellowship.

Minister

Treasurer

CHURCH SECRETARY'S REPORT 2016

Text for 2016: "I am the vine; you are the branches. If you remain in me and I in you, you will bear much fruit; apart from me you can do nothing." John 15: 5.

Our ministers, Rev Lorna and Rev Rob Sylvester, have challenged us throughout the year to express our devotion to God through the five strands of Justice, Inclusion, Inner Life, Mission and Hospitality. One way in which we were able to put this into action was for six weeks in January and February when we joined with five other Ashford churches to provide a night shelter for rough sleepers.

We were also pleased to open our building to a group of unaccompanied minors who have arrived in Ashford following harrowing journeys across Europe and even trafficking. Under guidance from Kent Refugee Action Network (KRAN) an ESOL group was started with Mrs Rebekah Butler as the teacher. As friendships began to be formed some of the young people were introduced to playing 5-a-side football teams at the Stour Centre. A second ESOL group for Nepalese people was started later in the year.

Another project that has provided an opportunity to show God's love and justice to those in need was the water project in northern Kenya which followed Rev Lorna Sylvester's brief sabbatical there in April 2016. The giving and raising of money for this project to bring water to the hospital in rural Kenya has involved many people and the efforts and generosity have been an encouragement at ABC as well as to the Kenyans themselves.

The year began with the administrator's role still unfilled. So the requirement for the post to be filled by a church member was reviewed and in March it was agreed to open the post to a non member who was suitably qualified, spiritually and practically. Following this decision Mrs Rebekah Butler was appointed and has brought great skill and warmth to the church office and is appreciated by the congregation and visitors alike.

The month of September brought a change to the teaching of our young people on Sunday mornings. In place of the usual two Sunday School classes for secondary age young people a Youth Alpha course was provided in a transformed lounge for the two classes together. We are grateful to God for the impact of the course and the decisions for greater commitment in many of these young lives as shared in testimonies and which will result in baptism for some in the coming year.

At the final CMM of the year three new deacons were elected: Dayo and Sola Ifekoya and Alison O'Donnell and thanks were expressed to Bridget and Derrick Sercombe as they completed twelve years on the diaconate. So we begin 2017 with an increased diaconate of one.

Thanks be to God for His provision and equipping in so many ways throughout this year.

Margaret Woollven

BOUGHTON REPORT FOR 2016

My starting point for preparing this report was to look at the report for 2015 and if I were simply to reproduce it most would apply to 2016 also. We continue to be grateful that either Lorna or Rob take a service each month and that the majority of other services are taken by members of the Preaching Team. We thank Phyllis Prescott for arranging preachers for us. Even though numbers attending are relatively small there is always that sense that God is with us and there is a real appreciation of the services.

With respect to monthly weekday activities Heidi and Alan Law organise the Lunch Club and several others provide assistance. Those who attend have some connection to the village and are always appreciative. At this time we are looking forward to having a new cooker installed and are very grateful to the giver. Carol Ward and Rose Warden organise the Coffee Morning and a few from outside the chapel join us for that from time to time. Interestingly they also attend the carol service; perhaps we should have more Carol Services! Joyce Hayes continues to do the weekly cleaning, Rose and Richard Warden see that there are always flowers in the chapel and that numerous other things are as they should be. Leading the Prayer Meeting falls to me.

Although it should be expected among people who are past the prime of life physical problems and health issues can make lives more complicated as some of our number have experienced. John Barrett has had operations on shoulder joints accompanied by pain and discomfort for weeks afterwards. Bob Hayes has problems also which has complicated the lives of Joyce and himself. Drawing attention to these does not mean that everyone else is completely fit and healthy but this report is not the place for a detailed list of each and every handicap with which people are afflicted. We do however, try to include such needs in our prayers and provide practical support insofar as we are able.

Many members of ABC will not be familiar with the chapel or the names that are included in this report. There is a way in which this could be changed and any who feel able to join us will be very welcome. I realise that for several, Sunday afternoon is a time when families can be together and this has to be respected but nevertheless the invitation is open. If I had to identify a problem for the future it would be that it could be difficult to get people to Boughton if for any reason even one of those with cars had to stop driving so "watch this space".

The coming year should see one important change, that the chapel will have a small car park. Martin Fermor, the owner of the surrounding orchard, has generously offered us some additional space and he will see that hedges and trees are removed as necessary. His offer was prompted by awareness that parking by the roadside involves a degree of risk because of the heavy load of traffic that the road now carries. We are extremely grateful to Chris McMullon for preparing the plans for change of use and submitting them to the Council. We now know that the plans have been accepted.

One thing that we do know about the future is that God will be there with us and we go forward with the assurance that we have a guide in whom we can put complete trust.

Ray Davis

SAFEGUARDING REPORT 2016

We are grateful to the workers in our children's and youth activities for continuing to take safeguarding procedures seriously. Even though we feel like one big family we do need to continue to be alert to all the aspects of keeping our children safe in a fast changing society that includes the dangers within social media. We also know that following safeguarding procedures protects our workers too.

In May 2016 the impact of hideous criminal behaviour was felt at ABC when a nationally reported trial led to the discovery that a paedophile had historic connections with our church. Thankfully "Safe to Grow" procedures have been in place at ABC for decades.

In September 2016, 24 members at the CMM watched the brief DVD that comprises Level 1 training. Eight children's workers from ESOL, GB, Sunday School and crèche attended Level 2 training and one deacon completed Level 3 which is a requirement for trustees.

All Sunday School rooms now have visual access via windows or glass door panels.

Safety at our exits after our services and in Sunday School rooms is still an issue that is the responsibility of us all.

Margaret Woollven

Safeguarding Co-ordinator and Designated Person for Child Protection

ASHFORD BAPTIST CHURCH

INDEPENDENT EXAMINER'S REPORT

I report on the accounts of the Church for the year ended 31 December 2016, which are set out on pages 2 to 7

Respective responsibilities of deacons and examiners

The charity's trustees are responsible for the preparation of the accounts. The charity's trustees consider that an audit is not required for this year under section 144 of the Charities Act 2015 (the Charities Act) and that an independent examination is needed.

It is my responsibility to :

- to examine the accounts under section 145 of the Charities Act,
- to follow the procedures laid down in the general Directions given by the Charity Commission (under section 145(5)(b) of the Charities Act), and
- to state whether particular matters have come to my attention.

Basis of independent examiner's report

My examination was carried out in accordance with the General Directions given by the Charity Commissioners. An examination includes a review of the accounting records kept by the charity and a comparison of the accounts presented with those records. It also includes consideration of any unusual items or disclosures in the accounts, and seeking explanations from you as deacons concerning such matters. The procedures undertaken do not provide all the evidence that would be required in an audit, and consequently I do not express an audit opinion on the view given by the accounts.

Independent examiner's statement

In connection with my examination, no matter has come to my attention:

- (1) which gives me reasonable cause to believe that in any material respect the requirements
 - * to keep accounting records in accordance with section 130 of the Act; and
 - * to prepare accounts which accord with the accounting records and to comply with the accounting requirements of the Act have not been met; or
- (2) to which, in my opinion, attention should be drawn in order to enable a proper understanding of the accounts to be reached.

David P Brookes FCCA
35 Gordon Close
Ashford
Kent
TN24 8RQ

Date : *10/4/17*

ASHFORD BAPTIST CHURCH

STATEMENT OF FINANCIAL ACTIVITIES

FOR THE YEAR ENDED 31ST DECEMBER 2016

	Note	Restricted Funds £	Unrestricted Funds £	Total £	2015 £
<u>INCOMING RESOURCES</u>					
Offerings					
General fund collections		1,112	13,112	14,224	16,278
Special Offerings		583	5,153	5,736	8,976
Covenants and Gift Aid		1,772	137,956	139,728	156,374
		<u>3,467</u>	<u>156,221</u>	<u>159,688</u>	<u>181,628</u>
Subscriptions and activity income		8,874	439	9,313	11,225
Investment Income		0	42	42	55
Legacies, donations and fund raising		0	7,057	7,057	3,567
Other Income		0	2,455	2,455	26,169
		<u>12,341</u>	<u>166,214</u>	<u>178,555</u>	<u>222,644</u>
Incoming resources from charitable activities					
<u>RESOURCES EXPENDED</u>					
<u>Costs of generating funds</u>					
Direct charitable expenditure	2	14,683	155,040	169,723	194,239
Management and Administration	3	0	9,269	9,269	10,364
		<u>14,683</u>	<u>164,309</u>	<u>178,992</u>	<u>204,603</u>
Total resources expended					
Net (Outgoing)/Incoming Resources		(2,342)	1,905	(437)	18,041
Fund Balances brought forward at 1 January 2015		7,906	157,754	165,660	147,619
Transfers between funds		0	0	0	0
at 31 December 2016		<u>£5,564</u>	<u>£159,659</u>	<u>£165,223</u>	<u>£165,660</u>

ASHFORD BAPTIST CHURCH

BALANCE SHEET

AS AT 31ST DECEMBER 2016

	Note	£	<u>2016</u> £	£	<u>2015</u> £
<u>FIXED ASSETS</u>					
Tangible Assets	4		16,031		20,145
<u>CURRENT ASSETS</u>					
Debtors		1,873		1,594	
Income tax recoverable		10,114		7,000	
Cash at bank and in hand		139,047		150,576	
			151,034		159,170
<u>CURRENT LIABILITIES</u>					
			1,842		13,655
			<u>£165,223</u>		<u>£165,660</u>
<u>REPRESENTED BY :</u>					
Restricted Funds			5,564		7,906
Unrestricted Funds			159,659		157,754
	6		<u>£165,223</u>		<u>£165,660</u>

Approved by the deacons and signed on their behalf by

Treasurer _____ Date

Deacon _____ Date

The notes on pages 4 to 7 form part of these Financial Statements

ASHFORD BAPTIST CHURCH

NOTES TO THE FINANCIAL STATEMENTS

FOR THE YEAR ENDED 31ST DECEMBER 2016

1. ACCOUNTING POLICIES

Accounting convention

The financial statements have been prepared under the historic cost convention and in accordance with applicable accounting standards and the Statement of Recommended Practice "Accounting by Charities"

Donations and other income

Non-covenanted donations and other income are brought into income in the year during which they are received, with the exception of donations given for a specific purpose which are carried forward as deferred income and matched with the relevant expenditure.

Legacies

Legacies are credited to the income and expenditure account in the year in which they are received.

Depreciation

Depreciation is provided to write off the cost of the asset over its estimated useful economic life.

Assets are depreciated at the following rates :

Computer Equipment	at	33.3 % on Cost
Fixtures, fittings and equipment	at	15 % on Written Down Value
Motor Vehicles	at	20 % on Cost

Depreciation is provided at rates calculated to write off the cost of each asset over its useful life. Items of equipment are capitalised where the purchase price exceeds £250.

Allocation of costs to direct charitable and other expenditure

Specific items of expenditure that relate to either direct charitable expenditure or other expenditure are attributed to the appropriate category. Items of expenditure which involve more than one category are apportioned on the following basis :

Manse Expenses - 25 % direct charitable, 75 % management and administration

Cash flow statement

Under Financial Reporting Standard No 1 the charity is exempt from the requirement to prepare a cash flow statement on the grounds of its size.

Operating Leases

Operating lease rentals are charged to the Profit and Loss Account as incurred.

ASHFORD BAPTIST CHURCH

DETAILED NOTES TO THE FINANCIAL STATEMENTS

FOR THE YEAR ENDED 31ST DECEMBER 2016

2) DIRECT CHARITABLE EXPENDITURE

	Restricted Funds £	Unrestricted Funds £	Total £	2015 £
Remuneration and Pension costs	0	60,512	60,512	74,242
Pulpit supplies and visiting speakers	105	620	725	4,361
Training	0	1,837	1,837	563
Motor and travel expenses	0	2,124	2,124	2,464
Church rates	298	2,031	2,329	2,537
Manse rates	0	844	844	986
Insurances	0	4,529	4,529	3,969
Heat and Light	784	7,403	8,187	4,599
Repairs, renewals and equipment	417	3,075	3,492	8,297
Music and PA	0	2,592	2,592	0
Postage and Telephone	0	1,758	1,758	3,013
Printing, stationery and advertising	40	4,697	4,737	2,847
Photocopier rental and expenses	0	2,333	2,333	2,448
Caretaking and cleaning materials	790	10,827	11,617	10,422
BMS and HMF contributions	884	24,000	24,884	24,676
Subscriptions and other gifts	2,656	17,146	19,802	39,259
Professional Fees	0	385	385	0
General expenses	0	538	538	394
Catering expenses	32	1,420	1,452	1,486
Acclivities	8,677	2,150	10,827	6,397
Bank Charges	0	105	105	30
Depreciation	0	4,114	4,114	1,358
Gain on disposal		0	0	(109)
	<u>14,683</u>	<u>155,040</u>	<u>169,723</u>	<u>194,239</u>

3) MANAGEMENT AND ADMINISTRATION OF THE CHARITY

	Restricted Funds £	Unrestricted Funds £	Total £	Total £
Manse rates	0	2,531	2,531	2,202
Manse insurance	0	309	309	537
Repairs and renewals	0	6,429	6,429	7,625
	<u>0</u>	<u>9,269</u>	<u>9,269</u>	<u>10,364</u>

ASHFORD BAPTIST CHURCH

DETAILED NOTES TO THE FINANCIAL STATEMENTS

FOR THE YEAR ENDED 31ST DECEMBER 2015

4)	<u>FIXED ASSETS</u>	<u>Motor Vehicles</u>	<u>Fixtures, Fittings and Equipment</u>	<u>Total</u>
	<u>COST:</u>			
	At 1st January 2016	18,991	41,039	60,030
	At 31st December 2016	18,991	41,039	60,030
	<u>DEPRECIATION:</u>			
	At 1st January 2016	950	38,935	39,885
	Charge for the Period	3,798	316	4,114
	At 31st December 2016	4,748	39,251	43,999
	<u>NET BOOK VALUE:</u>			
	At 31st December 2016	£14,243	£1,788	£16,031
	As at 31st December 2015	£18,041	£2,104	£20,145

The Trustees own the following freehold properties. Premises at Station Road/St John's Lane, the Manse at 23 Magazine Road, and Brook Chapel and leasehold land and buildings at Boughton Aluph Chapel. The original value of the buildings and the costs of improvements to them until 2016 have not been included in the Balance Sheet because, in the opinion of the Deacons, the cost of professionally valuing these assets to include a value in the accounts outweigh the benefits to the users of the accounts. They are insured for £2,957,982 (2015 : £2,878,098) which is an estimate of their replacement cost.

5)	<u>MOVEMENTS ON RESTRICTED FUNDS</u>				
	<u>Balances at 31/12/015</u>	<u>Income</u>	<u>Expenditure</u>	<u>Transfers between funds</u>	<u>Balances at 31/12/16</u>
Boughton Chapel - General	1,187	4,219	4,288	0	1,118
Boys Brigade - General	3,656	2,505	4,628	0	1,533
Brook Chapel	(2,796)	0	554	0	(3,350)
Coffee Morning	1,642	396	3	0	2,035
Craft Club	27	0	0	0	27
Girls Brigade	3,501	2,611	3,358	0	2,754
Lite Bite	756	877	918	0	715
Luncheon Club	1,904	1,734	934	0	2,704
Toddlers	471	0	0	0	471
Youth Camp	1,141	0	0	0	1,141
Youth Club	349	0	0	0	349
	11,839	12,342	14,683	0	9,498

ASHFORD BAPTIST CHURCH

DETAILED NOTES TO THE FINANCIAL STATEMENTS

FOR THE YEAR ENDED 31ST DECEMBER 2016

6) ANALYSIS OF CHURCH'S NET ASSETS BETWEEN FUNDS

	Restricted Funds £	Unrestricted Funds £	Totals £
Fixed assets	0	16,031	16,031
Debtors	0	1,873	1,873
Income tax recoverable	0	10,114	10,114
Cash at bank and in hand	9,498	129,549	139,047
Creditors	0	(1,842)	-1,842
	<u>9,498</u>	<u>155,725</u>	<u>165,223</u>

7) REMUNERATION

During the year the church employed three people to support its activities.

	<u>2016</u>	<u>2015</u>
Salaries	58,313	70,922
Social Security Costs	2,199	3,320
	<u>£60,512</u>	<u>£74,242</u>

Members of the diaconate are not employees and received no remuneration during the year. Some members received payment for repair work carried out at the church and the manse, for lay preaching and the reimbursement of expenditure incurred in relation to the activities of the church.

The church is heavily reliant upon volunteers who give their time, which cannot be valued.

8) FUTURE COMMITMENTS

There were no contractual commitments at 31 December 2016 (2015 : Nil) but it has been agreed that £50,000 from reserves will be set aside to replace the windows in the sanctuary.

ASHFORD BAPTIST CHURCH

DETAILED NOTES TO THE FINANCIAL STATEMENTS FOR THE YEAR ENDED 31ST DECEMBER 2016

1)	<u>INCOME TAX RECOVERABLE</u>	£
	Tax Recovered for 2015/2016	25,205
	Add : Proportion accrued from 6 April 2016 to 31 December 2016	10,114
		<hr/>
		35319
	Less : Proportion accrued 31 December 2015	(7,000)
		<hr/>
		28,319
		<hr/>
2)	<u>MOTOR EXPENSES</u>	
	Fuel	300
	Repairs	185
	Insurance	1,474
	Road fund licence	165
		<hr/>
	Cost of welfare bus	2,124
		<hr/>
3)	<u>REPAIRS, RENEWALS AND EQUIPMENT</u>	
	The following are transactions greater than £250	£
	Roofline Roofing (Manse)	4,200
	C Sait Fencing (Manse)	1,025
	Medash Signs	737
	Rexel (Hand dryers)	597
	Cube - Gas Maintenance	594
	Fire Extinguishers Service	328
	Shed (Manse)	325
	Chart Glass	264
		<hr/>
		8,070
	Sundry repairs, renewals and equipment	1,851
		<hr/>
		9,921
		<hr/>

ASHFORD BAPTIST CHURCH

DETAILED NOTES TO THE FINANCIAL STATEMENTS FOR THE YEAR ENDED 31ST DECEMBER 2016

4)	<u>SUBSCRIPTIONS AND DONATIONS</u>	£
	Donations and Subscriptions > £100	
	UFM (L Wilson)	5,681
	W.O.R.K	4,500
	Frizelles	1,908
	Girls Brigade Fees	1,134
	Hawkinge Baptist Church	1,000
	Tearfund	786
	L Wilson	600
	BU Membership	588
	Rev. A Boddington	500
	Furnace	500
	Boys Brigade Capitation Fees	467
	Orphans in Afrlca	320
	Donations and Subscriptions < £100	1,818
		<hr/>
		19,802
		<hr/>
5)	<u>CONTRIBUTIONS TO BMS AND HOME MISSION</u>	
	BMS	13,442
	Home Mission	11,442
		<hr/>
		24,884
		<hr/>
6)	<u>FIXED ASSETS</u>	
	No assets were purchased in the year.	

ASHFORD BAPTIST CHURCH

DETAILED NOTES TO THE FINANCIAL STATEMENTS

FOR THE YEAR ENDED 31ST DECEMBER 2016

	£
7) <u>DEBTORS</u>	
CCLI - Copyright Licence	812
Photocopier Refund	533
BT Refund	528
	<hr/>
	£1,873
	<hr/>
8) <u>CASH AT BANK AND IN HAND</u>	
Lloyds Bank PLC Current Account	32,699
HSBC Current Account	11,645
Instant Savings Account	88,285
Boughton Account	989
Girls' Brigade Account	2,754
Boys Brigade Account	1,534
Youth Camp Account	1,141
	<hr/>
	£139,047
	<hr/>
9) <u>CREDITORS</u>	
Total Clean	606
C Oliver	404
South Eastern Water	268
Southern Water	198
Refreshments	216
Get in the Picture	150
	<hr/>
	£1,842
	<hr/>



Ashford Baptist Church

St John's Lane ▪ Ashford ▪ Kent ▪ TN23 1PS

Tel: 01233 625542 ▪ Website: www.ashfordbaptist.org.uk ▪ Email: office@ashfordbaptist.org.uk

Ministers: Rev Lorna and Rev Rob Sylvester

STATISTICS

Total number of church members as at 31 December 2016: 135

Total number of baptisms in 2016: 3

Seb Hussain

Niamh O'Donnell

Lauren Povey

Number of children/young people with whom the church has regular contact through organised church activities:

Up to 11 years: 60

12-18 years: 64

Dedications: 1

Luna Oliver