



**PAROCHIAL CHURCH COUNCIL OF RUGBY**  
**SAINT ANDREW'S PARISH CHURCH**  
**REPORT FOR THE YEAR ENDED**

**31 DECEMBER 2017**

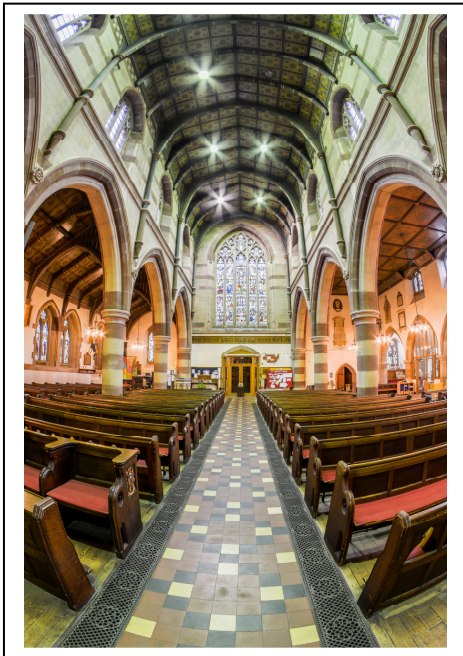


**Colossians 2:2**

**I want their hearts to be encouraged  
and united in love,  
so that they may have all the  
riches of assured understanding  
and have the knowledge of God's mystery,  
that is, Christ himself.**

## Aims and Purposes

St Andrew's Parish Church Council (PCC) has the responsibility of co-operating with the Incumbent, the Reverend Imogen Nay, in promoting in the ecclesiastical parish, the whole mission of the Church, pastoral, evangelistic, social and ecumenical. The Coventry Diocesan mission priorities are: **worshipping God, making new disciples and transforming communities.**



The five Anglican marks of mission are:

1. To proclaim the Good News of the Kingdom
2. To teach, baptise and nurture new believers
3. To respond to human need by loving service
4. To seek to transform unjust structures of society, to challenge violence of every kind and to pursue peace and reconciliation
5. To strive to safeguard the integrity of creation and sustain and renew the life of the earth

## Objectives and Activities

The PCC is committed to enabling as many people as possible to encounter God (Father, Son and holy Spirit) through a range of activities, events and services. The PCC maintains an overview of both the worship life of the church and its other activities, for example, its arts and cultural programme and its café.

When planning our activities for the year, the incumbent and the PCC have considered the Commission's guidance on public benefit, and, the specific guidance on charities for the advancement of religion. St Andrew's exists to serve the people of the ecclesiastical parish in which we are set, through providing them with opportunities to:

- learn about the Christian faith *and*
- develop a relationship with God through the sacramental, prayer and community life of the local church

We also support people to live out their faith as part of our parish community through the additional three Anglican marks of mission (see above 3-5). This includes:

- The provision of pastoral care for members of the congregation and those living in the parish, through home visiting, home communions, hospital visiting, baptisms, weddings and funerals
- Supporting charitable activities and fundraising in the church
- Providing opportunities for those who are vulnerable, and/or with additional support needs to take part in meaningful activity and gain work experience

To facilitate this work, it is essential that we maintain the fabric of the Church of St Andrew's, Rugby as well as maintain and steward our property, St Phillip's House.

# Review of the Year and other Activities

## Overview

Our *Mission and Vision 2017-2020* launched in December 2016, has provided the groundwork to enable the delivery of projects this year, with the aim to see our church grow and thrive. The PCC has invested in growing the staff team creating two new posts: one to help us reach out to children and young people through music, and the other to develop our arts and cultural programme. Jo Foote started as the Music Outreach Worker in January and Amber Merrick-Potter as the Events Manager in June. The other half of our strategy has been to invest in our building and to that end we installed a new LED lighting system and a new sound system. We have also been working to adapt the clergy vestry to enable it to function as a multi-purpose room, whilst also enhancing the beauty of the building. By installing a glass wall and removing the curtain we have exposed the original Butterfield arch and the wonderful baptistery window. The new room can be used as a vestry, sacristy, meeting room and as a room for our children's work to take place.

Alongside these developments, the PCC has also taken time to reflect upon our vision to 'be at the heart of things in Rugby'. The PCC discussed the word 'heart' in the Bible and felt it was important to remember the story of the Good Samaritan whilst these words from Colossians spoke to us: ***'I want their hearts to be encouraged and united in love'***. All together we felt a continued sense of call to be a ***'sacred place for Rugby'***.

The following report provides information about some of the events, activities and achievements of 2017, due to the confines of space, not every event, achievement or person can be mentioned, however every contribution that is made to our common life is valued highly.

The PCC would also like to take this opportunity to thank the Coventry Diocesan Mission Fund for its contribution to our mission work with children and families, both for the Children and Family Post and the Music Outreach Post; as well as to the Rugby Benevolent Fund for generously supporting our Events Manager post.

***May God continue to bless our work  
and enable us to give Him the glory.  
Amen***

## Safeguarding

Safeguarding is of paramount importance at St Andrew's Church and your Parish Safeguarding officers are Joyce Woodings and Rosemary Privett. Safeguarding at St Andrew's is everyone's business, not just the PCC's or the Safeguarding Officers. We know from the news that the Church of England has faced some severe criticism of it's handling of Safeguarding so all churches in Coventry Diocese are working hard to ensure that Safeguarding policies and procedures are in place. What is of most importance however is a change in culture which enables people to speak up and report if they have any concerns at all. The Diocese now has a number of Safeguarding trainers and Joyce Woodings is a Deanery trainer for Safeguarding, so takes part in the delivery of Safeguarding training, working with the Diocesan Safeguarding Officer and her assistant.

Some figures:

Number of DBS checks in 2017: 4

Any outstanding DBS checks: 1—waiting for ID

Number of people completing C1 in 2017: 4

Number of people completing C2 in 2017: 2

Number of people completing C0 in 2017: 4

Incidents reported to the Diocesan Safeguarding Office: 1

Anyone within St Andrews can complete the **C0 training on-line** [just go on to **Safeguarding** on the **Coventry Diocese website**] and we would encourage all in our church family to complete this—as it enhances both your knowledge and ours within church about Safeguarding. Please talk to Joyce if you want any more information.

## Children and Families

The Children and Family Team, with Wendy Coleman as our part-time Children and Family Worker, has seen our work with children and families grow and flourish during the year. Numbers of families worshipping with us on Sunday mornings has increased whilst for others faith has deepened through our Family Fun Service. We have developed the range of services held for children, for example, on Maundy Thursday children and their parents came to a service where we made bread, washed each other's feet and shared communion. It was a wonderful time of fellowship and important to enable children to access these wonderful liturgies and traditions.

Successful parties have been held at the Rectory enabling families to get to know each other better, these included: a bonfire, pancake and Advent party. The summer BBQ was well attended with a bouncy castle this year. We held a muddy puddle fundraising event for 'Save the Children' with Songs and Stories toddler group; this raised just over £100. We also held a soft play garden party in the summer for both the baby and toddler groups.



As part of or outreach we offered activities at the bike festival – bandana making and airbrushed tattoos. At the opening of the Christmas tree festival, we offered craft and tea for two local Rainbow groups; numbers attending this service increased significantly this year. We also held an extra Christingle service due to the overflowing numbers last year and this continues to be our most well-attended service of the year. The children really enjoyed taking part, dressing up for a live nativity during the service.

We had our first summer club at St. Andrew's based on the theme 'Songs from the movies', which was run with the Music Outreach Worker. The children learnt a song and we then watched the related movie; it was fully booked on both days. Wendy runs a Baking After-School Club at Northlands and was invited in to talk to YR1 and YR2 about being a Christian. Wendy has built up a Leading Worship Group at St. Andrew's Benn school, enabling children to organize and run assemblies for the school. Two local nursery groups continue to regularly visit the church and enjoy learning about Jesus. Wendy works alongside baptism families and sends out a regular family newsletter.

Tadpoles baby group numbers have been very up and down as parents go back to work or babies start to walk. The smaller numbers in these groups creates more pastoral support opportunities. Those that have attended

have expressed that they value the support they find in the group. Thanks to Louise Morley, a volunteer children's worker, who helps me regularly with this.

Thanks to the children's team, Peter and Rosemary Privett, Hannah Cossar, Rev'd Pam Gould and welcome to our new member Hannah Priest. Thanks also to Moira, Des, Laurie and Brenda for supporting Family Fun Service. Please continue to hold the work we are doing for the children and families in your prayers.

### *Fabric Report*

It has been a year of extraordinary achievement for the Fabric Group, not only was it the year for the Quinquennial Report, but also a year of significant projects: the LED lighting re-design, the new audio system, and a problem prone clergy vestry re-development. It has been exciting to see the effect of the new lighting, with limitless opportunities, and to have a new sound system after years of struggling, is a welcome addition. End of year 2017 we were still waiting for the glass wall dividing the clergy vestry and Lady Chapel to be installed, but with the benefit of a few months into 2018, we can say that it has finally been a success! Particular thanks to Ted Old for leading the lighting and sound project and to Bryan Acford for leading the glass wall project.



The Fabric Group will be focusing on the annual maintenance tasks identified in the Quinquennial Inspection over the next 5 years. Many thanks to all of them.

### *Hospitality*

The Church Café is at the centre of our Christian ministry of outreach and hospitality and is a triumph of dedicated volunteering and partnership working. However, it has faced some challenges this year. The Café Committee has been working hard to comply with regulations to achieve "certified kitchen status" with Rugby Council Environmental Health Authority and to achieve the 5 Star Status. Due to the local authority regulations, there have been some changes in the café, and sadly the biggest change is that the lovely homemade cakes that our church volunteers have made over the years are no longer allowed, as individual kitchens would need to be registered. Due to the increasing workload and pressure on volunteers the Committee decided to advertise for a Volunteer and Café Manager with a view to someone starting in the role in January 2018.

The café continues to provide much needed revenue to the church and increased its profit by **£4,500** this year. The PCC would like to thank all our volunteers and customers who make the St Andrew's Café the fantastic place that it is. Specific thanks are due to **Nannette, Carolyn** and **Jo** who over the years have managed and developed the café to be the friendly and popular place that it is. We continue to be indebted to **Brooke School** for the way that they run the café during the first part of the week. Please support the cafe - it is a major source of church income and according to a lot of people it serves the best tea and coffee in Rugby (!) at a very reasonable price.

### *Pastoral Care*

The pastoral care group at St Andrew's has met together every two months to pray and to co-ordinate pastoral care, either by organizing home visits or keeping in touch with those in need by telephone. **Home Communion** is taken to several residential homes, and private homes in our parish on a monthly basis and many thanks are due to those who faithfully deliver this ministry. We have increased the number of services in local centres this year by offering Age UK Claremont and Rugby Care Centre worship services and therefore are offering outreach, prayer, support and love to over 100 people each month who cannot or do not attend our church. We have also had a special group of people—not all of whom are part of the pastoral group—taking home communion to Bilton House to a long-standing member of the congregation. This ministry and friendship is a vital part of our life in Christ and a joy to be able to offer.

Our lay chaplains offer pastoral care and a warm welcome on a weekly basis in church to those who may not be members of our congregation, but need someone to pray with, light a candle with or just need someone to



talk to. Pastoral care is an essential part of building and sustaining our growing church family at St Andrew's and we welcome new members at any time. Joyce Woodings is the Pastoral Care contact person.

## Cultural and Community Events

The Events Team, from June 2017, has been led by Amber Merrick-Potter as the dedicated Events Manager which has enabled the range of our events to grow and develop. We have delivered a huge variety of events, from workshops, talks, through to film screenings and concerts. All were very popular, attracting returning and developing new audiences. Some highlights in the 2017 calendar included sell out audiences for **Men of Cornwall** and **The Manchester Carols**, whilst the family-friendly **Afternoon with the Snowman** was a welcome addition to our programme as was the Garden Gate Workshops. All the Christmas events benefitted from the magical atmosphere created by the popular annual **Christmas Tree Festival**.



We have continued to be at the heart of the town and central to some of Rugby's key events. This year's **Bikers' Festival**, **Festival of Culture** and **Food Festival** were extremely successful and saw record numbers of visitors to the town and in turn the church. We work closely with stakeholders and town partners and continue to develop our offer within these cultural events, making the most of our unique position, with the hope to raise much needed funds. This year also heralded in the long awaited professional lighting and sound systems. This has enhanced our beautiful building and our reputation as a professional venue is growing with distinguished choirs, musicians and speakers approaching us, or interested in including us in their tours

Special thanks to all the dedicated volunteers who contribute to our churches vibrant community and cultural events. New volunteers are welcomed, please contact Amber if you are able to help out with events.

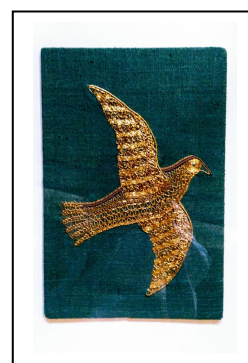
## St Phillip's House



At the end of the year we were pleased to welcome a family: Mum and Dad, son and daughter, as tenants in our Parish House. They have come to the UK as part of the Syrian Refugee Re-settlement Programme, a Home Office sponsored scheme. The Rector is part of the *Refugees Welcome in Rugby Group*, a group which has helped support the first four families that have arrived in Rugby as part of the scheme. The congregation (along with other individuals and groups) has been very generous in contributing to a **Refugee Support Fund** which has given a moving-in grant to each family and is able to be used for specific emergency support at other times. In January after sending our Christingle collection to the Children's Society we welcomed Maya, a Syrian refugee, who told us about her experiences and also about projects that the Children's Society is involved in in the Midlands.

## Worship, Prayer and Spirituality

A parish weekend away to Ty Mawr (a convent) in Wales; a full and rich Holy Week programme; a place of prayer and mourning after the Manchester Bombings; a place to welcome and give thanks for new life in baptism; a venue for Christian art exhibitions; a place to pray for our Mayor and councillors – in all these and many other ways, St Andrew's is a '**sacred place for Rugby**'. As part of our daily, weekly and monthly offering we open our doors 7-days a week to enable people to encounter God. The number of prayers written on our prayer board and the volume of candles that are lit are an indication of the necessity of this ministry. This is the core of our life and the reason that we gather together Sunday by Sunday.



This year we took part in the **Thy Kingdom Come** prayer initiative, led by both Archbishops and used some of the prayer material that comes with the programme. Tuesday Communion continues to be a place for faith

development and encounter, whilst home groups and Lent groups have also been held. Many members of the congregation use daily Bible reading notes, and a parish prayer diary has been collated by Rev'd Barry Collins. Morning Prayer is said in church Monday to Friday by a small but faithful band and many others join in at home with the prayers of the saints. Prayer is at the heart of our ability to serve God and one another.

During the year it has been noticeable that more people are joining us to worship at our 10.30am service; we are very rarely below 100 people and are regularly 125 people gathered together. It is noticeable that many children are gathering with us too. Numbers alone are not the sign of the health of a church community, but the fact that new people seem able to cross our threshold and find something here of God is reason to rejoice. The dedicated work of our ministry team, including the many retired clergy who serve among us, is vital to our continuing ability to offer the range and quality of worship that we do. The PCC would particularly like to thank the Rev'd Barry Collins, the Rev'd Bill Grittiths and the Rev'd Peter Privett for the time they offer so freely to our church.

## *Church Music*

Charles Gurnham took up the post of Director of Music in January 2017 but after a short time announced he would be leaving to study for a PGCE. We were delighted when Dr. Richard Dunster-Sigtermans agreed to take up the post and joined us in September. The choir has grown during the year and its contribution to worship is greatly appreciated by the different congregations. Richard has developed the quality and ability of our already well-accomplished choir and has entertained us with his excellence on the organ.



With the new post of Music Outreach Worker, Jo Foote has built up a Kids' Community Choir and a few older children have started to sing in the Junior Choir. The Kids' Choir sang at several different services and events and even entered the Rugby FM Choir Idol competition at Christmas. The Community Choir under Angela Youngman-Stewart has a healthy 50 members and is invited to sing at different venues around Rugby. We greatly enjoyed hearing all three choirs together at our Easter Sunday Celebration.

The varied musical life of the church, from the Anglican choral tradition to the kids' community choir enables both singers and listeners to worship God in a profound way. Thank you to all those who contribute to and appreciate the high-quality music that is offered here at St Andrew's.

## *Bell Ringing*

St Andrew's Church is pleased to continue the ancient art of bell ringing, which is ably overseen by the Bell Tower Captain, John Goddard. They are currently teaching 2 learners to ring rounds and call changes for their own band and have continued to be involved in teaching ringers from Newbold and Willoughby. Our bell-ringers have been joined by a family of 4 advanced ringers during the year, resulting in both improved ringing, and a much-increased capability.

There were no Full Peals rung during the year, but five Quarter Peals were rung - three in the NE Tower, and two in the West tower. These quarters comprised two in the NE Tower by visiting bands, a sponsored quarter celebrating a Golden Wedding Anniversary in the West tower, and a quarter in each tower celebrating the Queen and Prince Philip's 70th Wedding Anniversary. An attempt was made to ring a sponsored Quarter Peal of St Andrew's Triples on St Andrew's Day which did not come around after the prescribed 1260 changes, however, this still raised over £180 for church funds – we much appreciated this level of support from the congregation and others.

Around Christmas we rang carols on hand-bells at Te Hira, Granville House, Farmers Court, Trinity Court, Drovers Court, Claremont Centre and Bilton House care homes. We also rang carols at St Andrew's prior to the Christingle Services, at St Nicholas Radford Semele's Christmas Tree open day, and at a Visually Impaired Persons meeting at Southam Congregational Church. My thanks go to both ringers and clergy for all their support and efforts during the year.

## *Charity Work*

A lot of our charitable work happens around Christmas time, for instance, the Christingle collection for the Children's Society raised a fantastic **£1,028** over two services this year (2016-c.£700). The Christmas Tree Festival was once again brilliantly organised by Kirsty Chaplin, which saw dozens of local groups, clubs, societies and schools participating. Santa's Grotto returned to St Andrew's and it raised money for a variety of charities. From the Tree Festival and Grotto combined St Andrew's donated **£671** to Futures Unlocked and the Gift of Years project.

The annual Rotary Christmas Tree of Light was a focus point for remembering lost loved ones in the town and a service of remembrance was held in church. Money raised goes to Myton Hospice and is run by the Rotary. Andy and Laura Cope returned to put on the sell-out success of Manchester Carols, which in addition to telling the Christmas story in a fresh and creative way, raised **£1000** for Myton Hospice and the same for the church. The Charity Christmas Card Shop ran their shop in the church from Oct-Dec and raised many thousands of pounds for various charities. St Andrew's hosted a Lent Lunch which contributed to fundraising for CAFOD and Christian Aid and also took part in the annual Christian Aid week, with on-street collections and house to house collections. Few of these monies show up on our accounts but constitute gifts in kind.

## *Financial Review*

The General Fund has made a surplus this year of **£1,311**. Direct Giving has dropped by approximately **£2,000** which is of concern as it makes us ever more reliant on café and events income. Due to a legacy of £3000, a fundraising effort around St Andrew's Day, along with the café achieving £4500 more in profit compared to 2016, a small surplus has been achieved. The major change in the General Fund expenditure was on the fees of the Director of Music: in 2017 there is a whole year's charge compared to 2016 when there was a vacancy. Maintaining the building was also costly in 2017, as we spent around £9,000 on general maintenance and repairs. Taking the surplus from the deficit brought forward leaves a deficit on the General Fund of £5,336 to carry forward.

There was little movement on the Designated Funds apart from a transfer of £6364 towards funding salaries of Outreach workers. At the year end the Designated Funds after deducting the deficit for the year of £5,733 gives a total of £262,067 to carry forward.

There has been a lot of movement on the Restricted Funds with the cost of the new lighting, sound system and vestry alterations at £135,150 being financed by grants, VAT recovered and the balance of £92,793 being transferred from the Expendable Endowment Fund. Various other projects were funded by grants from the Diocese and contributions from Restricted Funds.

At the end of the year the balances on Restricted Funds had reduced from £86,997 to £84,109 and on the Expendable Endowment from £252,952 to £160,229.

## *Reserves Policy*

The Council consider that the reserves held at the end of the year were adequate for the church's needs over the next twelve months. Whilst the unrestricted fund is in deficit there are adequate funds held on deposit by designated funds to cover this and provide sufficient working capital. The majority of the restricted and endowment funds assets are also held on deposit, which can be realised at short notice.

At present, as mentioned above, the church still has a small deficit on unrestricted general funds. It is the intention of the PCC to move to a situation where some unrestricted general funds can be held in reserve to cover future expected general running costs, with the rest of the funds held being either designated or restricted for specific purposes. The PCC will shortly resolve to keep sufficient general reserves to cover at least three months running costs.



## *Structure, Governance and Management*

The Parochial Church Council of the Ecclesiastical Parish of St Andrew Rugby was formed when the Rugby Team Ministry was dissolved on 4th July 2013.

The method of appointment of Parochial Church Council members is set out in the Church Representation Rules. At St Andrew's Church the membership of the PCC consists of the incumbent, the churchwardens, treasurer and other clergy (if co-opted) and members of the congregation who are on the electoral roll. All those who attend our services or who live in the parish are encouraged to register on the Electoral Roll and vote for PCC members and Churchwardens.

PCC members are responsible for making decisions on all matters of general concern and importance to the parish including deciding on how the funds of the PCC are to be spent; PCC members are also trustees of the charity. New members receive information about their duties as a charity trustee.

The PCC met 10 times in the year. Given its wide responsibilities the PCC has a number of committees which deal with a particular aspect of church life; this includes the Standing Committee, the Finance Committee, Café Committee and the Fabric Group. These committees report back to the PCC on a regular basis and inform the decision-making process of the PCC.

Ensuring the Christian governance of our Church School, St Andrew Benn Primary School is an additional responsibility of the PCC with the Diocesan Board of Education and the PCC appoints Foundation Governors to the Board. The Conventional District of St Peter John is delegated to the oversight of the Priest in Charge, the Reverend Sheila Bridge and the PCC of St Peter John. Their accounts are separate and are not included in this report.

### *Administrative Information*

St Andrew's Church is situated in the town centre of Rugby, Warwickshire. It is part of the Diocese of Coventry within the Church of England. The Correspondence address is St Andrew's Church, Church Street, Rugby, CV21 3PT. The PCC is a body corporate (PCC Powers Measure 1996, Church Representation Rules 2011) and a registered charity, number 1160223. The Parochial Church Council (PCC) of the Ecclesiastical Parish of St Andrew Rugby was registered with the Charity Commission in March 2014.

PCC Members are elected for three years. The members listed below are those who have served at any time from the 1st January 2017 until the approval of the financial statements on Wed 18<sup>th</sup> April 2018.

**Ex officio members:**

- Incumbent : The Reverend Imogen Nay (Chairperson)
- Wardens: Joyce Woodings (and deanery synod rep) and Hash Mistry

**Elected members:**

- Ian Sheppard from April 2015, Assistant Church Warden
- Pat Eales Treasurer, Deanery Synod Representative
- Moira Gatward from July 2013, and again from April 2017
- Rex Pogson Deanery Synod Representative, Bishop's Council
- Tony Pratt Deanery Synod Representative
- Bryan Acford from April 2014, Asst Church Warden
- Ivan Finbow Gift Aid Officer, co-opted Sept 2015
- Chris Homer co-opted Jan 2016
- John Goddard Tower Captain, co-opted Jan 2016
- Gill Nelson from April 2017
- Mike Minton Choir Rep, from April 2017
- Hannah Priest from April 2017

**Committee Chairs**

Chair of Standing Committee, Rev'd Imogen Nay

Chair of Finance Committee, Ian Sheppard

Chair of Fabric Committee, Hash Mistry

Chair of Café Committee, Gill Nelson

*Approved by the PCC on the 18<sup>th</sup> April 2018*

*Signed: Rev'd Imogen Nay*

**ECCLESIASTICAL PARISH OF ST ANDREW RUGBY**

**ABRIDGED STATEMENT OF FINANCIAL ACTIVITIES FOR THE YEAR ENDED 31ST DECEMBER 2017**

	Note	Unrestricted £	Designated £	Restricted £	Endowment £	2017 Total £	2016 Total £
<b>INCOMING RESOURCES</b>							
Incoming resources from donors	2(a)	87,049	0	0		87,049	89,084
Other voluntary incoming resources	2(b)	53,768	0	42,285		96,053	61,850
Income from charitable/ancillary trading	2(c)	9,247	480	500		10,227	9,922
Other Ordinary Income	2(d)	0	0	16,081		16,081	3,623
Income from Investments	2(e)	7,297	254	4,690		12,241	12,728
<b>Total Incoming Resources</b>		<b>157,361</b>	<b>734</b>	<b>63,556</b>	<b>0</b>	<b>221,651</b>	<b>177,207</b>
<b>RESOURCES USED</b>							
Grants	3(a)	2,845	0	2,028		4,873	4,598
Activities directly relating to church	3(b)	112,014	0	162,027	0	274,041	131,838
Fund Raising & Publicity	3 (c )	7,459	109	0		7,568	7,686
Church management and administration	3(d)	23,401	0	1,476	0	24,877	23,409
<b>Total Resources Used</b>		<b>145,719</b>	<b>109</b>	<b>165,531</b>	<b>0</b>	<b>311,359</b>	<b>167,531</b>
<b>NET INCOMING/(OUTGOING) RESOURCES</b>							
		11,642	625	-101,975	0	-89,708	9,676
Inter Account transfer			-6,364	99,087	-92,723	0	0
Realised and Unrealised Gains on Investments							26,014
<b>NET MOVEMENT IN FUNDS</b>		<b>11,642</b>	<b>-5,739</b>	<b>-2,888</b>	<b>-92,723</b>	<b>-89,708</b>	<b>35,690</b>
Balance 1st January 2017		-6,647	267,806	86,997	252,952	601,108	565,418
<b>BALANCE 31st December 2017</b>		<b>£4,995</b>	<b>£262,067</b>	<b>£84,109</b>	<b>£160,229</b>	<b>£511,400</b>	<b>£601,108</b>

		Unrestrict ed	Designat ed	Restrict ed	Endowme nt	Total 2017	Total 2016
	Note	£	£	£	£	£	£
<b>FIXED ASSETS</b>							
Tangible Fixed Assets		886		4,428		5,314	7,085
Investment Assets	10		239,905	67,388	160,229	467,522	567,128
		886	239,905	71,816	160,229	472,836	574,213
<b>CURRENT ASSETS</b>							
Debtors		20,006		5,242		25,248	12,874
Inter Fund balances		-32,059	22,162	9,897			
Short Term Deposits				2,714		2,714	2,844
Cash at Bank and in Hand		24,820				24,820	21,176
		12,767	22,162	17,853	0	52,782	36,894
<b>LIABILITIES: AMOUNTS FALLING DUE WITHIN ONE YEAR</b>							
		18,989		5,560		24,549	9,999
<b>NET CURRENT ASSETS</b>							
		-6,222	22,162	12,293	0	28,233	26,895
<b>NET ASSETS</b>							
		-£5,336	£262,067	£84,109	£160,229	£501,069	£601,108

## FUNDS

Balance	5	£4,995	£262,067	£84,109	£160,229	£511,400	£601,108
---------	---	--------	----------	---------	----------	----------	----------

2 INCOMING RESOURCES		Unrestrict ed	Designate d	Restrict ed	Endowmen t	2017 Total	2016 Total
		£	£	£	£	£	£
2(a) Incoming resources from donors							
Planned Giving							
Contributions received		57,039				57,039	58,124
Income tax recoverable on giving		15,705				15,705	16,187
Gift Aid Donations		6,071				6,071	5,735
Collections (open plate) at all services		7,203				7,203	8,001
Childrens' Services		1,031				1,031	
Special Appeal						0	1,037
		87,049	0	0	0	87,049	89,084



2(b) Other voluntary incoming resources

Donations etc.	1,968		4,464	6,432	4,141
Legacies	3,000			3,000	15,000
Fund raising events	48,221	4		48,221	37,200
Sundry income	579			579	0
Grants			37,821	37,821	5,509
	53,768		42,285	0	96,053
					61,850

2(c) Income from charitable and ancillary trading

Magazine sales books and adverts	74			74	54
Printing	228			228	549
Fees	8,945	480	500	9,925	9,319
	9,247	480	500	0	10,227
					9,922

2(d) Other Ordinary Income

Insurance Claim					
VAT			15,952	15,952	598
Salaries Recouped				-	1,853
Other			129	129	1,172
	0	0	16,081	0	16,081
					3,623

2(e) Income from investments

Dividends and interest including any reclaimed tax	-3	254	4,690	4,941	4,928
Rent received	7,300			7,300	7,800
	7,297	254	4,690	0	12,241
					12,728

**TOTAL INCOMING RESOURCE**

£157,361	£734	£63,556	£0	£221,651	£177,207
----------	------	---------	----	----------	----------

<b>3 RESOURCES USED</b>		<b>Note</b>	<b>Unrestricted</b>	<b>Designated</b>	<b>Restricted</b>	<b>Endowment</b>	<b>Total '17</b>	<b>Total '16</b>
			<b>£</b>	<b>£</b>	<b>£</b>	<b>£</b>	<b>£</b>	<b>£</b>
<b>3(a) Grants</b>								
Missionary and charitable giving:								
Church overseas;								
- missionary societies			361				361	101
- relief and development agencies								
Home missions and other			1,098				1,098	4,432
Church societies								
Other grants (inc. Unallocated grants)			1,386		2,028		3,414	65
			2,845	0	2,028	0	4,873	4,598
<b>3(b) Activities directly relating to the work of the Church</b>								
Ministry:								
share to diocese etc.			66,389				66,389	66,681
clergy Expenses			2417				2,417	1,589
Fees to Diocese			2938				2,938	2,833
Bell-ringers					390		390	360
Upkeep of Church;								
verger's fees							-	82
running costs			23,351		39		23,390	23,194
Church maintenance			9,102		213		9,315	5,556
Major Repair Expenditure					133,675		133,675	7,204
Salary of organists and fees			0				0	4,850
Choir Fees and Expenses			480		465		945	506
Mission			1,093				1,093	375
Publicity			517				517	442
Princes Street Expenses			1,912				1,912	4,309
Outreach Salaries					26,372		26,372	7,735
Young people's work			1,268				1,268	3,091
Other payments			2,547		873		3,420	3,031
			112,014	0	162,027	0	274,041	131,838
<b>3(c) Fund Raising &amp; Publicity</b>								
Cost of Fund raising		4	7,459	109			7,568	7,686
<b>3(d) Church management and administration</b>								
Church centre: salaries and pension								
telephone			15,112				15,112	15,074
printing and stationery			389				389	501
copy charges			737				737	704
computer expenses			3,902				3,902	3,351
			430				430	317
Examiner's Fee			1,396				1,396	1,080
Professional Charges			1,140				1,140	-
Advert for organist							-	512
Depreciation			295		1,476		1,771	1,870
			23,401	0	1,476	0	24,877	23,409
<b>TOTAL RESOURCES USED</b>			<b>£145,719</b>	<b>£109</b>	<b>£165,531</b>	<b>£0</b>	<b>£311,359</b>	<b>£167,531</b>

	2017	2016	2017	2016
4 FUND RAISING	Income		Expenditure	
Café	29,160	23,179	4,259	2,867
Open Door	4,753	3,629	946	1,698
Recitals and Concerts	2,086	1,180	482	130
Cards books and candles	2,191	2,364	878	943
Use of Church and frontage	4,000	2,752		
Festival of trees	671	1,015		
Special Events		198		900
Other and sales of products	5,360	2,883	894	1,148
	48,221	37,200	7,459	7,686

#### 5 MOVEMENT IN FUNDS

	As at 01.01.17	Interest Allocated	Other Income	Expenditure	Unrealised Gains	Transfer	As at 31.12.17
<b>Unrestricted Funds</b>	£	£	£	£		£	£
General	-6,647	-7	157,368	156,050			-5,336
<b>Designated Funds</b>							
RTM Fund	33,393	70				-6,364	27,099
Christmas Tree Fund	413			109			304
Community House Fund	146,000						146,000
Legacies Fund	87,649	184					87,833
Volunteers fund	351		480				831
	£267,806	£254	£480	£109	£0	-£6,364	£262,067
<b>Restricted Funds</b>							
Special Fund	23,954	50				-3,693	20,311
Bell Ringers' Fund	2,844	4	764	898			2,714
Music and Organ Fund	3,463	7	500	465			3,505
FOSSAC Fund	2,846	6					2,852
Choir Scholarship Fund	812	2					814
Child and Family Fund	10,759	23	5,002	13,144		7,382	10,022
Mission and Vision Fund	8,659	4,533	40,952	135,150		92,723	11,717
Refugee Fund			3,078	1,943			1,135
Music Outreach Fund			3,820	6,099		2,570	291
Community Outreach Fund			3,794	7,588		3,794	0
Wannell Trust	2,872			243			2,629
St Philips Fund	30,788	65	955			-3,689	28,119
	£86,997	£4,690	£58,865	£165,530		£99,087	£84,109
<b>Endowment Fund</b>							
Expendable Fund	£252,952					-£92,723	£160,229

**PAROCHIAL CHURCH COUNCIL OF ST ANDREW'S CHURCH, RUGBY**  
**(Registered Charity No: 1160223)**

**Independent Examiner's Report to the Members of the Parochial Church Council**

I report on the financial statements of the Parochial Church Council of St Andrew's Church, Rugby (the PCC) for the year ended 31 December 2017 which are set out on pages 10 to 20.

**Respective responsibilities of the PCC and the examiner**

The members of the PCC are responsible for the preparation of the financial statements. They consider that an audit is not required for this year under section 144(2) of the Charities Act 2011 (the 2011 Act) and that an independent examination is needed.

It is my responsibility:

- to examine the financial statements under section 145 of the 2011 Act;
- to follow the procedures laid down in the General Directions given by the Charity Commission under section 145(5)(b) of the 2011 Act; and
- to state whether particular matters have come to my attention.

**Basis of independent examiner's report**

My examination was carried out in accordance with General Directions given by the Charity Commission. An examination includes a review of the accounting records kept by the PCC and a comparison of the financial statements presented with those records. It also includes consideration of any unusual items or disclosures in the financial statements, and seeking explanations from the PCC concerning any such matters. The procedures undertaken do not provide all the evidence that would be required in an audit, and consequently no opinion is given as to whether the financial statements present a 'true and fair' view and the report is limited to those matters set out in the statement below.

**Independent examiner's statement**

Your attention is drawn to the fact that the PCC has prepared the financial statements in accordance with Accounting and Reporting by Charities: Statement of Recommended Practice applicable to charities preparing their accounts in accordance with the Financial Reporting Standard applicable in the UK and Republic of Ireland (FRS 102) in preference to the Accounting and Reporting by Charities: Statement of Recommended Practice issued on 1 April 2005 which is referred to in the extant regulations but has since been withdrawn.

I understand that this has been done in order for the financial statements to provide a true and fair view in accordance with the Generally Accepted Accounting Practice effective for reporting periods beginning on or after 1 January 2015.

In connection with my examination, no other matter except that referred to in the previous paragraph has come to my attention:

- [1] which gives me reasonable cause to believe that in any material respect the requirements:
- to keep accounting records in accordance with section 130 of the 2011 Act; and
  - to prepare financial statements, which accord with the accounting records and comply with the requirements of the 2011 Act and the Regulations
- have not been met; or
- [2] to which, in my opinion, attention should be drawn in order to enable a proper understanding of the financial statements to be reached.

**Wende Hubbard FCCA**

For and on behalf of Burgis & Bullock

Chartered Accountants  
Statutory Auditor

.....  
1 The Goldsmith Way  
Eliot Business Park  
Nuneaton  
Warwickshire  
United Kingdom  
CV10 7RJ

25