

Gainsborough Adventure Playground Ltd Annual Report 2017/18

Gainsborough Adventure Playground Ltd
Riseholme Road, Gainsborough
Lincolnshire, DN21 1NL
01427 617165
gapaltd@outlook.com
Company No 06442668
Charity No 1130827
Ofsted No EY407208
Registered Company in England & Wales



Chairs Remarks

Another year has passed, my fourth year as chair, it has been a difficult year at times. I dread to think where we would be without the time, commitment, work and effort that Lisa and the staff put in to make GAPA a success. I would also like to thank the other Directors, Trustees & Volunteers who help out, to keep GAPA running as smoothly and efficiently as possible.

We had to make a few tough decisions, especially with the GAPA staff now being reduced to four personnel. I think the changes that were made have proved successful and have benefitted the staff in their working environment. Without doubt it has been a huge benefit to the children who attend GAPA.

We are now entering the end of our first year since the merger with Hillcrest, there have been teething problems but on the whole things seem to be going well. We have been meeting with Hillcrest regarding a new licence for occupation. This is still in the hands of Solicitors but both parties are hoping for an agreement before the end of term, Friday 20th July 2018.

I would like to thank everyone for making GAPA a success and look forward to another year as a director and if re-elected another year as chair.

Richy Doran
Director

The GAPA Team

Richy Doran	Director/Chair	Tom Skelton	Trustee
Natalie Croft	Trustee/Treasurer	Claire Jones	Manager
Carol Vessey	Director	Michelle Young	Playworker
Margaret Duffett	Director	Katie Bratley	Playworker
Sam Swinton	Director	Ollie Stephenson	Volunteer
Vera Swinton	Trustee	Tracy Jackson	Volunteer
Karen Farmer	Trustee	Hayden Young	Volunteer
Audrey Fletcher	Director	Jennifer Laws	Volunteer
Lisa Pinkney	Company Manager	Gabriela Simpson	Volunteer

*GAPA is a playground where your adventures come alive,
Where talent is nurtured and young minds thrive.
Nothing is impossible if you just believe,
Freedom is yours until the day you leave.
The staff are so welcoming they are always there for you,
If you have a problem they will help you through.
I spent many years there having so much fun,
Regardless of the whether it's raining or the skies are full of sun.
My Childhood was amazing thanks to GAPA and the staff,
Whenever you're feeling down they would always make you laugh.
If there was a way I'd go back to the very start,
But for now I will cherish the memories I made there and keep him in my heart.
The playleaders are the heart of GAPA they are what makes it unique,
I was there every day it was open week after week.
If fun and freedom to explore new things is what you're looking for,
Then go try out GAPA for a day I guarantee you'll be back for more.*

Amy Fordham

Company Managers Report

GAPA has gone through big changes during the year and in April we started consultation with Hillcrest Early Years Academy, who from September took over the management of the nursery. All the nursery staff TUPE transferred over to Hillcrest so they could continue to work in the nursery and to use their knowledge and close relationships with the children and families to enable a smooth transition for all. It was a great opportunity for the nursery with the skills and expertise that comes from the Academy and the introduction of a teacher the children will be getting the best start to their learning journeys and their readiness for school. I would like to thank all the staff that have worked in the GAPA Nursery since it first opened in 2008 with the support of Sure Start funding and lots of hard work from Carrie-Ann Cunningham it became a well-loved facility attracting children from Gainsborough, Scotter, Hemswell, Lea, Morton, Blyton etc. The quality of the play and experiences on offer to the children were fantastic and carried out by truly dedicated, committed and wonderfully playful people. Thank you to Alison Smith who from the very start helped, advised and supported us and to all the other workers from the Early Years team at Lincolnshire County Council for their support, training and advice.

Thank you to everyone that has supported GAPA over the last year not just the people that been involved in running fundraising events but to all the people that have shown their support by buying raffle tickets, visiting us on stalls, dropped money in our charity buckets or danced at our charity night it is all very much appreciated. This year we held our charity night at The United Services Club, not only did we not have to

pay for the venue but once again the band, Shine the 90's Experience, gave up their time for free. We raised £578, and special thanks to Frank Charlton and his very successful auction which helped us to reach this amazing amount! The Shine are a great group of guys and their support is really valued and has become a very important part of the GAPA's social and fundraising diary.



The 0 - 4 year service relaunched its Sunflower Family Group and due to its success it now runs on a Monday and Wednesday morning during term time. Families can also stay after the group and have lunch, it is lovely to see everyone sat together enjoying freshly prepared hot meals and I would like to thank all the volunteers that help in the group without them we would be unable to have so much fun.

The Adventure Playground has also gone through a period of change and has been taken back to its original aims of having the children at the heart of everything it does. We have changed the opening hours are

open for longer and have introduced a session on a Monday, a youth club on a Friday evening and an Outreach session at Affordable Foods on Queensway. The children are enjoying the new hours and we have seen an increase in the numbers of older children using the service not just at night but in the school holidays.

The GAPA team now has 4 members of staff and 7 volunteers that come in on a regular basis to support the staff. Every single member of the team has worked so hard this year and I am always amazed how they are willing to change and adapt their roles, hours etc to enable the service to meet the needs of the children and to provide an exciting and varied programme that continues to have a positive impact on all using the service. We have a strong management board that is extremely proactive and has ensured the aims and objectives of the charity are always met. Thank you to Richy for the support you have given me in your role as Chair and to all the Directors and trustees. Thank you to you all.

GAPA Service

This year we have been funded through many grants, service level agreements and donations. WLDC and Children in Need has continued to support GAPA and we are now entering the second year of the 3 year service level agreement and grant agreement. We have also received grants and donations from:

Cllr Initiative Fund	Gainsborough Mothers Union
Unite the Union	Hexadex
Gainsborough Dispensary Charity	Nationwide Building Society
Positive Fures	Gainsborough Home School Group
RB Fruits	Gainsborough Masons
Johnsons Fish and Chip Shop	

We have also had lots of support from local businesses and the general public who have provided cash, prizes and handmade items that are all used to generate income for the playground. As well as our own fundraising the children have been involved in fundraising for other charities including Comic Relief, Children in Need and Cancer Research. A big thank you to Morrison's and Tesco's who have both provided us with donations and we have been able to Bag Pack at Tesco's which raised £380. Customers of Nationwide Building Society in Gainsborough nominated three local charities to receive a donation and then voted for who they wanted to win the first prize, GAPA received the top prize of £1200.

In May, 14 Directors and Senior Managers from Hexadex Ltd came to carry out site work as part of a team building activity. They spent the day with the playworkers on the site and totally refurbished the sensory garden for the children. It was a great day and something we are going to look into in the future as we feel that we could offer team day events to other companies to generate revenue.

We were selected in August by Marks and Spencer's Gainsborough branch to be their Charity of the Year. As well as fundraising for us during the year we are also supplied with surplus produce which is used in the preparation of the meals for the children and families.

We have been able to take the children on many fantastic trips thanks to funding from the Gainsborough Dispensary Charity, Cllr Initiative fund, Unite the Union and tireless fundraising events, the trips have included visits to Skegness Aquarium, Mablethorpe, Tattershall Lake Aqua Park, Highfield Adventure Playground and Hartsholme Park. Some children never get the chance to visit these places so it is great to be able to offer them the opportunity and to be able to offer places to parents/carers so families can experience days out together. This year has been full of highlights and the children have been given lots of exciting and varied activities in particular was the opportunity to visit Winter Wonderland in Derbyshire, the children and families thoroughly enjoyed the day out and all got to see Santa and his reindeer after a stroll through the snowy forest to his log cabin. Also through the Councillor Initiative fund a group of young people had the chance to visit Tattershall Lake Aqua Park the day was fantastic and really challenged and pushed the boundaries of everyone. It was probably one of the best trips we have been on and Thank you to Cllr Mike Devine for supporting GAPA and enabling us to give the young people of Gainsborough such fantastic opportunities.



GAPA's open access service for children aged 5 – 14 years is open, afterschool, Saturdays and during the holidays. There is a large indoor space and two and a half acres of open space that enables us to fulfil basic childhood needs. – running, jumping, climbing, swinging, racing, yelling, rolling and making a big mess. GAPA's environment fulfills children's basic need for freedom, adventure, and experimentation, risk taking, and just being children. Over the last year we have opened all year round after school and on Saturdays and have held 5 busy Playschemes in the school holidays. Easter Playscheme ran for 2 weeks the Playscheme was free for all children attending but we did put on a paid for workshops

and held a Spring Fayre to offset some of the costs. The workshops last for 2 hour and cost £5 per child unlike the open access adventure playground children this is classed as child care and children are not allowed to leave the site. The May, October and February playschemes ran for one week they were well attended and saw trips including Sherwood Forest, Skegness Aquarium. Also many workshops were also available costing £5 per child. We held our Summer Playscheme for 5 weeks across the summer holidays. The Playscheme was another great success and allowed the children to be involved in lots of exciting free play activities. We took the children and families on trips to Mablethorpe, Tattershall Lakes, Highfield Adventure Playground and Hartsholme Park in Lincoln. The buses for the trips were part funded by Gainsborough Dispensary Charity and this enabled us to offer the seats for a subsidized rate so families could afford to take their children out of Gainsborough and spend quality time together in places they may not have any other opportunities to visit. GAPA worked with Positive Activities to hold a fun day during the summer holidays. During the day over 300 people visited the site and joined in the fantastic activities that were on offer from all the partners of the steering group which includes agencies from across Lincolnshire. It was a great success and plans are underway for next years.

The Christmas Playscheme saw the playground open for most of the holidays with the exceptions of the Bank Holidays again the sessions before Christmas were well attended and we were lucky enough to secure funding for a trip to Winter Wonderland in Derbyshire to see Santa!

We have evaluated the service and consulted with the children who use the service and changed the service to enable us to meet their needs. We have new opening times which now sees us open on a Monday, longer on a Wednesday and Thursday and we now run a youth club on a Friday night. We have also set up an outreach group at Affordable Foods on a Friday after school to allow us to reach new children. Affordable Foods is a surplus food store on Queensway the staff are very accommodating and have a fantastic space which we are able to use. We have also started a Walking Bus every day from St Georges School, parents can book their child onto the bus via the school and playworkers collect them and bring them to GAPA after school we make a 50p charge per child for this.

Monday	Sunflower Family Group	9:30am - 11:30am
	Playsession	3:30pm – 6:30pm
Tuesday	Playsession	3:30pm - 6pm
Wednesday	Sunflower Family Group	9:30am - 11:30am
	Playsession	3:30pm - 6:30pm
Thursday	Playsession	3:30pm - 6:30pm
Friday	Affordable Foods	3pm - 4:30pm
	Playsession	3:30pm - 6:00pm
	Youth Club	6pm - 8pm

Since we came back from the Christmas break in January the open access play sessions have been very quiet in the evenings but since the new hours started mid-February the numbers of children attending are increasing and the last few weeks of March have been really busy with lots of older children using the site regularly. We are continuing to monitor the new hours and attendances and will evaluate the findings over the summer holidays. If we feel we need to make any further changes these will be discussed with the children and implemented in September as we feel it is important to offer a service which is meeting the needs of local children and Young People. So far all the comments we have had from the children have been very positive and they have absolutely loved the changes.

We continue to provide services for children aged 0 – 4 years and run the Sunflower Family Group. The group is extremely busy with up to 20 different families attending each week. We use both the indoor and outside space and in true GAPA fashion even bad weather doesn't stop us playing outside. A meeting was held with the parents that attend the group and staff also talked to them during the group to get feedback and ideas for future events and activities. A lot of the parents said that GAPA's



Sunflower Group was their favourite group of the week and loved that we could offer outdoor play with fires, nature walks etc. As a result of the feedback and due to the huge success of the Sunflower Family Group on a Wednesday we have now opened another group on a Monday. After both Sunflower groups we now provide a hot meal at 12noon which costs £1.50 for children and £3 for adults. It has proved to be very popular and we will continue to do this whilst there is a demand.

Staff, Apprentices and Volunteers

GAPA currently employs 4 staff who through some very tough times and uncertainty remain extremely loyal to GAPA and all go above and beyond what is expected of them. We are all looking forward and putting all their time and effort into sustaining the Open Access Adventure Playground and developing new ideas and ensuring the children are at the centre of everything that we do.

GAPA has offered lots of volunteering opportunities this year with 910 hours of time given, volunteers have been made up of over 51 different parents, members of the community, and local business such as Hexadex and Marks & Spencer's.

The voluntary hours are made up from people who carry out many different roles within the playground from grass cutting, delivering leaflets, general maintenance to helping with activities for the children. We do not count the hours of all the parent/carers that visit GAPA each day and end up giving us a helping hand such as washing up, nipping to Morrison's when we run out of milk etc. This informal help is a great support to the workers and as well as helping us also gives the parents a sense of belonging and they feel that they are valued within the organisation.

We have recruited 5 new volunteers this year. Gabriela, Jennifer, Ollie and Hayden volunteer during the play sessions and Ollie and Hayden also come in early to help with site work which includes site checks, litter picking, grass cutting and general maintenance. The 5th new volunteer Sam usually comes to GAPA once a week with his carer to cut the grass. Sam is 21 and has Cerebral Palsy so has restricted mobility and very little verbal communication but is able to confidently operate the sit and ride mower. Sam is working hard to build up his skills and experience of controlling vehicles as he would one day like to hold a license to operate a fork lift truck. The weekly grass cutting allows Sam to work towards his goal as well as giving him the opportunity to work on his core strength and keep him active and out in the fresh air and enables him to positively contribute to his community in spite of any disabilities.

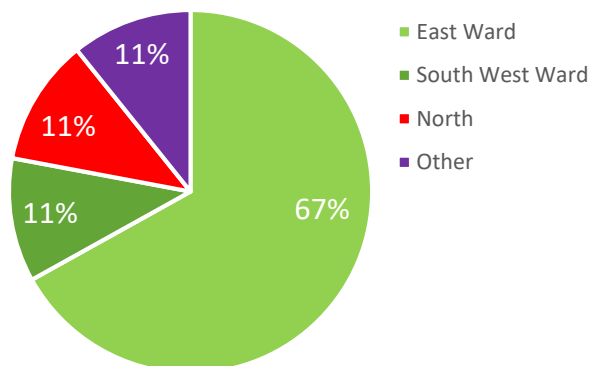


Tracy Jackson and Tracy Coombes still volunteers during the day and have helped to run the Family Groups we hold for children aged 0 – 4years. Unfortunately we have lost long term volunteer Tracy Coombes due to a change in her family circumstances, Tracy has said she will still help when she can and will continue to support fundraising events such as the Bingo sessions we run termly for adults in the local community.

Lisa Pinkney
Company Manager

Details of the 372 children registered with GAPA as at 31st March 2018

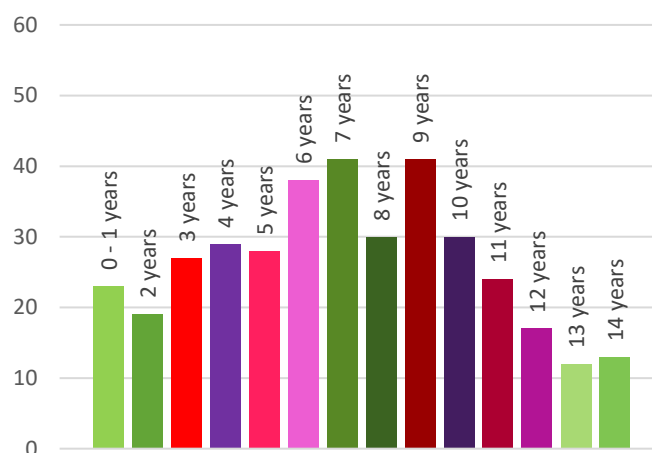
Where children live



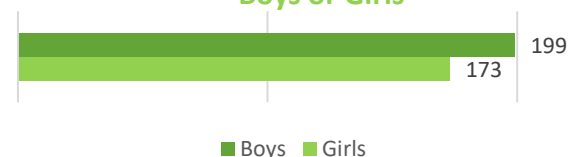
Other

Morton	Lincoln
Laughton	Lea
Northorpe	Retford
Beckingham	Scotton
Blyton	Hemswell
Heapham	Willoughton
Worksop	Scunthorpe
Worlaby	Misterton
Bottesford	Loughborough

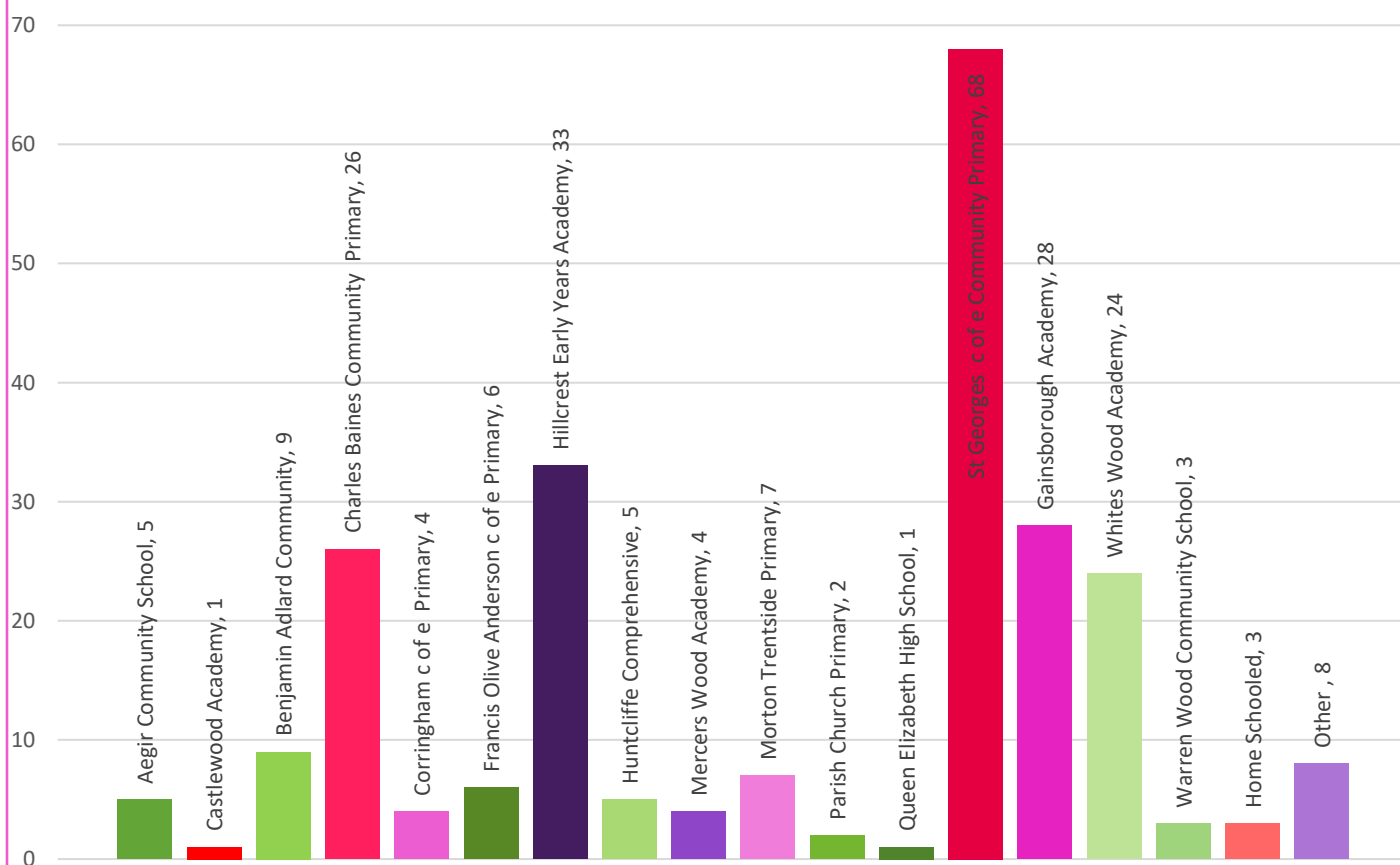
Ages of Children



Boys or Girls



Schools Children Attend



Monthly Attendances by children for 2017/18

Month	0 - 4 years	5 - 7 years	Over 8 years	Total
April	153	288	486	927
May	111	217	453	781
June	146	234	372	752
July	130	244	325	699
August	221	350	489	1060
September	125	158	399	682
October	117	222	351	690
November	159	210	397	766
December	97	143	310	550
January	49	63	324	436
February	51	104	359	514
March	52	113	417	582
Total Attendances for 2017/18	1411	2346	4682	8439
Total Attendances for 2016/17	1188	2193	5117	8498

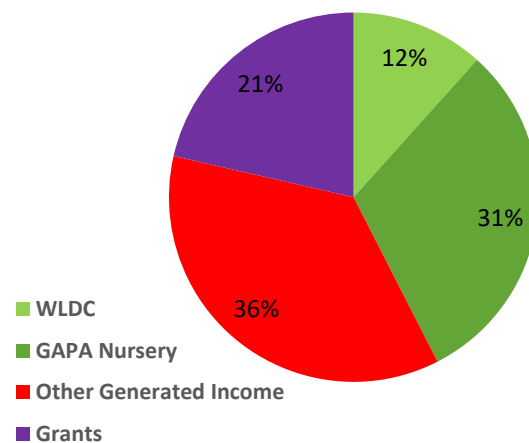
Monthly Attendances by parents for 2017/18

Month	Parents
April	722
May	1138
June	1243
July	735
August	426
September	189
October	163
November	210
December	131
January	46
February	60
March	46
Total Attendances	5109

Attendances by volunteers for 2017/18

Month	No
April	55
May	181
June	99
July	64
August	37
September	66
October	48
November	80
December	50
January	57
February	67
March	137
Total hours for 2017/18	941

GAPA Income for 2017/18



Focus Groups

We decided that instead of a questionnaire we would hold a focus group to try to get a true feel of how our customers, the children, feel about GAPA and to find out if the activities on offer at GAPA are being enjoyed by the children and what, if any, changes the children would like to make to the service.

This is a group of 5 boys aged 5-8 years, they all attend regularly through term time and the school holidays. We began the group by making paper aeroplanes (at the boys request), and seeing who could get theirs to fly the furthest. While we were doing this I explained to the boys that I had some questions to ask them about what they think about GAPA, and if they want us to make anything different. AGS quickly asked why, and said he didn't want to do any writing - which the other boys agreed with. I assured them that there was no writing involved, and told them that for us to make sure we are doing a good job we needed to find out what they think of the things we do here – I explained that I needed them to really think about their answers and to talk to each other about what they think. I told them that no matter what their answers were, even if there were things that were bad, we wanted the truth as if we don't know when things aren't working properly we can't fix them.

The first question I asked was "Do you like coming to GAPA?"

JB shouted "I love it" and jumped up with his hands in the air, AGS "Yeah, I always ask my Mum if I can come, but sometimes she says no, like if she has stuff to do and doesn't want to come pick me up – but then I get her to ring my Nan and she most of the time says she will get me, which is good coz I get bored at home." JB "Yeah I get bored too, but my mum won't bring me, I can only come when my step-mum brings me." DM "I'm ok coz I live really near so I can come all the time when I want to, which is every day, but I always have to be picked up case its dark." AGS "But do you like it?" DM "Yeah I like it, I wouldn't come all the time if I didn't." LB "I would come every day if I could, I really like it." AGS "I'd live here if I could!" While the boys were talking OR was nodding his head and smiling, then said "Me too."

I then asked "What do you like about coming to GAPA?"

AGS "I like that there's always something to play with, there's always loads to do." DM "And if I want to make something I can, and I can paint it and take it home, and you always help if I get stuck." LB "I like having fires and building dens, coz we built the one outside ages ago and it's still there so I can play in it when I want." JB "Yeah and sometimes we cook on the fires, my favourite is marshmallows and hot chocolate and I cooked my own marshmallow on my stick." OR "I like playing with my friends." AGS "Yeah coz sometimes I only see them here don't I OR?" OR "Uh huh, coz we go to different schools." AGS "I like coming to the parties, do you remember when we had that one where we dressed up and put our heads in jelly?" Me "The Halloween one?" AGS "Yeah that was funny, you got really messy and I won the apple game when I had to get as many as I could with my mouth and I won a prize, can't remember what but the parties are good."

I then asked "Is there anything you don't like about GAPA?"

At this question all of the boys looked at each other and shook their heads. I told them that it is ok if there are things they don't like, and to remember that we can't fix something if we don't know about it. AGS "Sometimes people have ripped one of my pictures before, and I didn't like that but I told Michelle and she helped me stick it together and told them off." LB "I don't like it when its tidy time I don't want to tidy but you say we can't have tuck if we don't help so I have to." DM "Sometimes I don't like it when it's dark outside, coz there are scary noises." AGS "But we play out in the dark all the time." DM "yeah but I don't like it on my own." AGS "Ash yeah no I wouldn't like it on my own either in case there's a killer clown out there." JB "But if we are together then its ok coz it'll run away from us." OR nods his head and says "Yeah coz we are like power rangers dino force."

Lastly I asked "Is there anything you would change about GAPA?"

AGS "I want it to be open all the time and not be closed some days when I'm not at school." OR "Yeah me too, and I want it to be closer to where I live so I can come more." DM "Yeah that'd be ace if I could walk out my house and be at GAPA like it was in my garden." AGS "Then all our houses would be next to it." LB "I would like more go karts and scooters and skates, coz then I wouldn't have to wait as long for a go." OR "Yeah that's a good idea, more scooters."

This is a group of 5 girls aged 11 – 13 years, they all attend regularly through term time and the school holidays – though one of the girls only attends on Saturdays and during school holidays as she lives in a different town.

I explained to the group that I had some questions to ask them about what they think about GAPA, and if they want us to make anything different. I told them that for us to make sure we are doing a good job we needed to find out what they think of the things we do here – I explained that I needed them to really think about their answers and to talk to each other about what they think. I told them that no matter what their answers were, even if there were things that were bad, we wanted the truth, as if we don't know when things aren't working properly we can't fix them.

The first question I asked was "Do you like coming to GAPA?"

NJ "Yeah, I love it here, I've been coming since I was little, it's harder to come to now though coz I get home from school later and my bus stop is miles away so I only get an hour here. I always come on Tuesdays though, coz the youth club is on till later."

RH "I know what you mean, I would come more if I lived here – I really like it."

MY "I only live across the road so I don't have that problem, but some of my friends do. I like coming, its fun and we can all get together without annoying our mums haha."

LD "Haha yeah, my Mum'd never let me have everyone in our house she'd go mental!"

CH "Do you remember when we spilt nail varnish on your carpet? We were banned from your bedroom after that."

LB "Yeah, she was well mad. That's why I like coming here, we can relax and I don't end up grounded."

CH "It's great here."

I then asked "What do you like about coming to GAPA?"

CH "It depends on my mood. Sometimes I like sitting and talking with my friends, sometimes I like playing in the woods and stuff like that."

MY "I like that we can do what we want - I mean not everything like we still have to follow the rules, but like if we want to listen to music we can, if we want to make things we can, if we want to sit and talk we can. Do you know what I mean? There isn't anything that we have to do – we do it coz we want to."

NJ "Yeah, I get it I think. It's like sometimes I come in and they're like hey we're making this, and I'm like erm no thanks I'm gonna sit over here."

RH "I like it because I can come here with my brothers, I only see them on weekends, I can play with them for a bit, but don't have to be with them all the time – coz they are really annoying."

NJ "Oh, my favourite thing is the trips. We go all over, I go on them all the time it's funny."

RH "Yeah we go on the trips sometimes."

MY "Me too, my favourite is the seaside one." LD "I like meeting my friends, and listening to music and stuff like that. It's good when we play man hunt and stuff as well."

I then asked "Is there anything you don't like about GAPA?"

NJ "I don't think so, but sometimes it's crazy in here." Me "What do you mean by crazy?"

NJ "Well sometimes there's really little kids everywhere, and we kept getting told to close the door and there's nowhere to sit sometimes coz it's full of Mums and they can be really shouty."

MY "OMG yeah." RH "I don't think there's anything I don't like, I just wish there was one where I live so I could go everyday its well boring living in a village there's nothing to do at all."

NJ "What haven't you even got parks?"

RH "Yeah there's a park but it's for little kids and its rubbish and my Grandma won't let me go very much anyway."

LD "Nah I love it here, but the little kids get annoying sometimes but if I tell someone they're doing my head in they sort it out."

CH "I think its fun here."

I then asked "Is there anything you would change about GAPA?"

CH "Yes! Be open more!"

NJ "Defo! It should be open later and on more days."

MY "That'd be great if it was open more."

LD "You should totally do that." Me "RH?" RH "I can't think of anything I want to change, I just like coming and hanging out."

Lastly I asked "What would you be doing if you weren't coming to GAPA?"

NJ "I'd be at home eating and playing on my phone, watching tutorials and keeping up a streak."

Me "A streak?"

NJ "Yeah, you know a Snapchat streak where you send each other messages and you get a streak of replies going."

Me "OK".

RH "I'd be wandering round the town with my Mum and brothers, doing the shopping with her."

CH "I'd be in bed playing on my tablet and eating sweets."

LD "I'd be at home on my sofa, but the problem is that that's not healthy. We've done about it at school that we need to be active so we need to come here and play."



This is a group of 6 young people, both boys and girls, aged 10-13 years. I explained to the group that WM was going to ask them a few questions about GAPA and what we do here. I told them that for us to make sure we are doing a good job we needed to find out what they think of the things we do here – I explained that I needed them to really think about their answers and to talk to each other about what they think. I told them that no matter what their answers were, even if there were things that were bad, we wanted the truth, as if we don't know when things aren't working properly we can't fix them. I then handed the group over to WM, and sat away from the table.

WM "Right guys I need to ask some questions so here goes. I haven't been coming here for that long, just a few months, I started coming after I came to the youth club with MY. What made you first come here?"

TY "I came with you."

MY "My Mum said I should come over, that there were kids my age to play with."

WM "How long ago was that?"

MY "A few years now."

IC "Someone at school told me to come up for a game of table tennis."

ES "I came with my little sister coz we weren't allowed to play out otherwise."

JC "My mates were coming up here so I came with them."

WM "OK, so what made you come back and, you know, keep coming?"

MY "It was fun, I mean, it still is haha, but we'd do fun things like every day so I kept coming and some of my friends from school came as well so that was good."

TY "I come coz this is where we all come, it's like every day at school we're like what're we doing tonight? Let's go to GAPA and play pool or man hunt. That game is so funny hiding from the little kids."

WM "Yeah we always say we are coming here but why do we?"

JC "Well where else would we go? At least here there's loads to do and they let us play music through the speakers, and don't have a go at us if it's loud."

TY "Yeah and stuff like when it was snowing, they gave us crates for sledges down the hill."

WM "I know haha, that was ace."

ES "I come coz otherwise I'd have to go home at like 5 o'clock coz my mum doesn't want me out."

WM "Why?"

ES "She says I get in too much trouble, coz there's loads of nasty kids about."

MY "Yeah and when you're here there's always someone who'll sort it out."

ES "Yeah, and Claire's walked me home before coz some were waiting for me near the path."

IC "Yeah, she walked me home once coz it was dark and I didn't want to go through the subway on my own."

WM "OK, so what would you do if GAPA wasn't here? Like where would you go?"

MY "I don't even know what I'd do, I mean where else is there?" IC "I know right? I'd probably be at home or at a mate's house, that's where I went before."

JC "Yeah same."

TY "Same."

WM "Same, or I'd have to take my brothers out with me."

MY "Yeah but they come here with you."

WM "Yeah, but they're not with me all the time annoying me and shouting for me all the time here are they?"

MY "Nah, that's coz they're hiding from you in manhunt and you don't go find them haha."

WM "I do find them, eventually haha."

ES "I'd be at home playing on my phone, that's what I do when its shut."

Case Studies

Lisa is a mother of 3, she has 2 sons aged 6 and 2 and a daughter aged 12. She also has 2 stepsons aged 10 and 6 who she looks after every Saturday during term time and midweek during the school holidays. Her partner has a very strained relationship with his children's mum so it is Lisa who arranges contact with the boys; she collects them and takes them home so the boys don't have to witness their parents arguing as their relationship is very aggressive. The family have been coming to GAPA for around a year, they attend every Saturday during term time and several times per week during the holidays, including the family trips.

Before coming to GAPA Lisa really struggled to find things to do with all of the children to keep them entertained, she says it was hard to find something that would suit all off the ages. If she found something the younger children liked then the older children moaned and whined that they were bored – but if she found something for the older children, the younger ones often weren't able to join in. She says it was like a vicious circle, but staying at home with them was even worse as there just wasn't enough space for them all to play and they'd do nothing but argue and fight over everything from toys to who sat where on the sofa. Unfortunately she says that they mostly had no choice but to stay in, as the park took an hour to walk to with all of the children and everything else was just too expensive to do very often – just taking them all swimming cost about £30. Lisa says the stress of trying to entertain all 5 of the children was horrific and she used to dread picking the boys up – to the extent that she would feel sick and anxious before collecting them and she even considered not having them some days.

Lisa was told about GAPA by a friend of a friend one day while she was in town with all of the children and she decided to try it, she says at this point she was nearly at the end of her tether. She says that from the minute she walked through the door she felt herself relax, she says that the staff greeted them all straight away and that she was made to feel really welcome. The children were all introduced to children their ages who showed them around and played with them and straight away they had lots of things to do, she couldn't believe how friendly everyone was and how quickly the children settled in – she says she barely saw the older ones, which gave her time to play with her youngest without having to referee arguments. Lisa says that coming to GAPA has really helped her, she no longer has the stress of trying to find something to do with the children that she can afford which means they are able to just have fun. She says that all of the children love it at GAPA, they ask to come all the time and she brings them whenever she is able – whether it's just her 3 or all 5. Lisa says that not only are the play sessions brilliant, but GAPA gives her the opportunity to take the children on days out during the holidays. She says that there is no way she would've been able to take them to Mablethorpe without the GAPA trip and she is looking forward to the Christmas trip with them as well.

Lisa says that if it wasn't for GAPA she doesn't know what would've happened with her and the children, she honestly doesn't think she would pick her stepsons up as often if GAPA wasn't here for her to bring them to as she was really at the end of her tether with the situation. She says that GAPA has made her enjoy having them all together and that they get along much better with each other and have a much better relationship because they can play without all of the stress and arguing.

HW is a single mother of one, she has an 18 year old son who lives at home with her. She also looks after her twin nieces, who she has a permanent residency order for. They have lived with her for the past few years, although the residency order only became final last year. Their mother was unable to cope with them and there were signs of neglect. This has caused great stress within the family, as other family members also wanted to look after the girls, and this has meant that some family relationships have broken down. The girls have monitored contact with their Mum and have regular visitation with their Dad, who lives out of town, but who they go and stay with in school holidays and some weekends.

HW started to bring the girls to GAPA around 2 years ago. She says that they were really shy and introverted when they began living with her and it took a while to get them to come. When the girls first started coming to GAPA they were quite withdrawn, they stayed together and didn't really get involved with the other children at all. They were unsure of how to interact with anyone other than themselves. HW says that apart from when they were at school she didn't think that they went anywhere to play with others and she was worried about them. She spoke with the play workers about her concerns and they reassured her that they would spend time with them and work out a plan to get them involved in the sessions and games. The girls were very reliant on adults being involved in their games so the play workers developed ways of involving the other children. They joined the girls in group discussions about planning the sessions and activities and played lots of team games with them and the other children. Gradually the girls began to become more and more involved and began to make clear friendship groups, becoming less reliant on adult interaction.

During this time HW and the staff were speaking regularly and giving each other regular updates regarding the girls' behaviour and whether GAPA was making a difference. HW says that at first she had to fight the girls to get them to come, but gradually they started to get really excited about it. She says that one moment that will stick with her is when she came to collect them one night and they dragged her outside to show her a den that they had helped make. She says that they were so proud of themselves and were really happy, and it was the first time she had seen them like that – she says she nearly cried.

From then she says the girls have come on in leaps and bounds, and that it has affected other areas of their life as well. The girls' school have noticed a massive difference in them, which is really helping them during their lessons. HW says the difference at home is massive, they are more confident, happier, have friends and are able to play with others without withdrawing and crying. She says they are also more able to talk things through with her, rather than having tantrums. During this time HW had to have surgery on her back, which left her in a lot of pain which she is still recovering from. HW says that she does not know what she would have done if GAPA wasn't here for the girls to come to. She says she was so happy when GAPA started to offer the school walking bus, as that really helped her. She has since returned to work and says that GAPA has been a real life line for her, especially if she was either feeling unwell or had to attend late meetings. She says she doesn't believe the girls would be anyway near the outgoing, happy children they are now if it wasn't for coming to GAPA. She says the support and understanding the staff offers is brilliant, from dietary requirements to illness, she says they are always available to listen and always offer help where they can.

REGISTERED COMPANY NUMBER: 06442668 (England and Wales)
REGISTERED CHARITY NUMBER: 1130827

**REPORT OF THE TRUSTEES AND
UNAUDITED FINANCIAL STATEMENTS FOR THE YEAR ENDED
31 MARCH 2018
FOR
GAINSBOROUGH ADVENTURE PLAYGROUND
LIMITED**

Rigel Wolf Ltd
Chartered Accountants
Orion House
28A Spital Terrace
GAINSBOROUGH
Lincolnshire
DN21 2HQ

**GAINSBOROUGH ADVENTURE PLAYGROUND
LIMITED**

**CONTENTS OF THE FINANCIAL STATEMENTS
FOR THE YEAR ENDED 31 MARCH 2018**

	Page
Report of the Trustees	1 to 3
Independent Examiner's Report	4
Statement of Financial Activities	5
Balance Sheet	6 to 7
Notes to the Financial Statements	8 to 12
Detailed Statement of Financial Activities	13 to 14

**GAINSBOROUGH ADVENTURE PLAYGROUND
LIMITED**

**REPORT OF THE TRUSTEES
FOR THE YEAR ENDED 31 MARCH 2018**

The trustees who are also directors of the charity for the purposes of the Companies Act 2006, present their report with the financial statements of the charity for the year ended 31 March 2018. The trustees have adopted the provisions of Accounting and Reporting by Charities: Statement of Recommended Practice applicable to charities preparing their accounts in accordance with the Financial Reporting Standard applicable in the UK and Republic of Ireland (FRS 102) (effective 1 January 2015).

OBJECTIVES AND ACTIVITIES

Objectives and aims

The objectives of the Company are to relieve young people and their families resident in Gainsborough and the surrounding area who are in need, by providing services or facilities calculated to relieve the needs of such persons.

To promote for the benefit of the inhabitants of Gainsborough and the surrounding area the provision of facilities for recreation or other leisure time occupation of individuals who have need of such facilities by reason of their youth, age, infirmity or disablement, financial hardship or social and economic circumstances or for the public at large in the interests of social welfare and with the object of improving the condition of life of the said inhabitants.

To develop the capacity and skills of the members of the socially and economically disadvantaged community of Gainsborough and the surrounding area in such a way that they are better able to identify, and help meet, their needs and to participate more fully in society.

Significant activities

In furtherance of the objects of the Company and without prejudice to the generality therefore the committee may,

provide, maintain and equip a playground or playgrounds affording opportunities for adventure and enterprise.

assist the provision, maintenance and equipment of such playground(s) as aforesaid, and raise and borrow money for these purposes.

employ staff to assist the Company in managing the play areas established.

make and maintain contact with and enlist general support from other persons and organisations who are interested in the design, establishment, development or management of playgrounds.

**GAINSBOROUGH ADVENTURE PLAYGROUND
LIMITED**

**REPORT OF THE TRUSTEES
FOR THE YEAR ENDED 31 MARCH 2018**

FINANCIAL REVIEW

Reserves policy

The Management Committee will consider the level of reserves that is prudent for the Gainsborough Adventure Playground Limited to have. Consideration will be given to redundancy, liabilities, solicitor's and accountants' fees and any other significant factors that should be taken into account if the playground was to close or experience fluctuations/ interruptions in income and expenditure.

Reserve Needs

The Management Committee has reviewed the playground's need for reserves in line with the guidance issued by the Charity Commission and have decided to set the amount at £43,500 to meet contractual liabilities should the playground have to close.

At 31st March 2018 the company is holding £76,004 in its reserve account.

Breakdown of Reserve

	£
Redundancy pay for eight employees	25,000
3 months manager's salary and running costs to pay outstanding bills and wind down the Company	13,500
Legal and accountants' fees	<u>5,000</u>
Total	43,500

Monitoring and Review of Reserves Policy

The Management Committee will consider current costs and examine the level of reserves each year.

The Management Committee and the playground manager will review this reserve policy each year.

STRUCTURE, GOVERNANCE AND MANAGEMENT

Governing document

The charity is controlled by its governing document, a deed of trust, and constitutes a limited company, limited by guarantee, as defined by the Companies Act 2006.

Management

A Management Committee consisting of not more than 26 members shall be elected annually at the Annual General Meeting.

The Management Committee shall be responsible for the Annual General Meeting and between General Meetings shall direct and manage the affairs of the Company, and shall be deemed to have delegated to them all necessary authority for the purpose of achieving the objectives of the Company.

The Management Committee shall have power to appoint trustees to hold any necessary land on behalf of the Company. Such trustees to be answerable to the Management Committee.

The Management Committee shall elect the following honorary officers at the first meeting immediately after the Annual General Meeting:-

Chairperson

Vice Chairperson

Secretary

Treasurer

Such other officers as may be from time to time decided.

A quorum of the Management Committee shall be four. The Management Committee will meet on a bi-monthly basis.

**GAINSBOROUGH ADVENTURE PLAYGROUND
LIMITED**

**REPORT OF THE TRUSTEES
FOR THE YEAR ENDED 31 MARCH 2018**

REFERENCE AND ADMINISTRATIVE DETAILS

Registered Company number
06442668 (England and Wales)

Registered Charity number
1130827

Registered office
Riseholme Road
GAINSBOROUGH
Lincolnshire
DN21 1NL

Trustees

Mrs C A Vessey	
Mrs M Duffet	
Mrs A Fletcher	
Miss G A Burton	- resigned 9.6.17
Mr R P Doran	Chair
Miss S D Swinton	

Independent examiner

Simon Smith
FCA FCCA
Rigel Wolf Ltd
Chartered Accountants
Orion House
28A Spital Terrace
GAINSBOROUGH
Lincolnshire
DN21 2HQ

COMMENCEMENT OF ACTIVITIES

The company commenced to trade on 1 April 2010, having taken over the assets and liabilities of the former Gainsborough Adventure Playground Association.

Approved by order of the board of trustees on 15 June 2018 and signed on its behalf by:

Mr R P Doran - Trustee

**INDEPENDENT EXAMINER'S REPORT TO THE TRUSTEES OF
GAINSBOROUGH ADVENTURE PLAYGROUND
LIMITED**

Independent examiner's report to the trustees of Gainsborough Adventure Playground Limited ('the Company')

I report to the charity trustees on my examination of the accounts of the Company for the year ended 31 March 2018.

Responsibilities and basis of report

As the charity's trustees of the Company (and also its directors for the purposes of company law) you are responsible for the preparation of the accounts in accordance with the requirements of the Companies Act 2006 ('the 2006 Act').

Having satisfied myself that the accounts of the Company are not required to be audited under Part 16 of the 2006 Act and are eligible for independent examination, I report in respect of my examination of your charity's accounts as carried out under section 145 of the Charities Act 2011 ('the 2011 Act'). In carrying out my examination I have followed the Directions given by the Charity Commission under section 145(5) (b) of the 2011 Act.

Independent examiner's statement

I have completed my examination. I confirm that no matters have come to my attention in connection with the examination giving me cause to believe:

1. accounting records were not kept in respect of the Company as required by section 386 of the 2006 Act; or
2. the accounts do not accord with those records; or
3. the accounts do not comply with the accounting requirements of section 396 of the 2006 Act other than any requirement that the accounts give a true and fair view which is not a matter considered as part of an independent examination; or
4. the accounts have not been prepared in accordance with the methods and principles of the Statement of Recommended Practice for accounting and reporting by charities [applicable to charities preparing their accounts in accordance with the Financial Reporting Standard applicable in the UK and Republic of Ireland (FRS 102)].

I have no concerns and have come across no other matters in connection with the examination to which attention should be drawn in this report in order to enable a proper understanding of the accounts to be reached

Simon Smith
FCA FCCA
Rigel Wolf Ltd
Chartered Accountants
Orion House
28A Spital Terrace
GAINSBOROUGH
Lincolnshire
DN21 2HQ

2 July 2018

**GAINSBOROUGH ADVENTURE PLAYGROUND
LIMITED**

**STATEMENT OF FINANCIAL ACTIVITIES
FOR THE YEAR ENDED 31 MARCH 2018**

	Notes	Unrestricted funds £	Restricted fund £	31.3.18 Total funds £	31.3.17 Total funds £
INCOME AND ENDOWMENTS FROM					
Donations and legacies		48,966	-	48,966	51,267
Other trading activities	2	54,349	-	54,349	115,158
Investment income	3	25,403	-	25,403	676
Total		<u>128,718</u>	<u>-</u>	<u>128,718</u>	<u>167,101</u>
EXPENDITURE ON					
Raising funds		12,626	-	12,626	14,212
Charitable activities					
Playground		122,744	5,920	128,664	173,896
Total		<u>135,370</u>	<u>5,920</u>	<u>141,290</u>	<u>188,108</u>
NET INCOME/(EXPENDITURE)		<u>(6,652)</u>	<u>(5,920)</u>	<u>(12,572)</u>	<u>(21,007)</u>
RECONCILIATION OF FUNDS					
Total funds brought forward		100,257	254,981	355,238	376,245
TOTAL FUNDS CARRIED FORWARD		<u><u>93,605</u></u>	<u><u>249,061</u></u>	<u><u>342,666</u></u>	<u><u>355,238</u></u>

CONTINUING OPERATIONS

All income and expenditure has arisen from continuing activities.

The notes form part of these financial statements

**GAINSBOROUGH ADVENTURE PLAYGROUND
LIMITED**

**BALANCE SHEET
AT 31 MARCH 2018**

	Notes	Unrestricted funds £	Restricted fund £	31.3.18 Total funds £	31.3.17 Total funds £
FIXED ASSETS					
Tangible assets	8	16,158	249,061	265,219	273,002
CURRENT ASSETS					
Stocks	9	24	-	24	73
Debtors	10	4,602	-	4,602	5,183
Cash at bank and in hand		81,260	-	81,260	78,414
		<u>85,886</u>	<u>-</u>	<u>85,886</u>	<u>83,670</u>
CREDITORS					
Amounts falling due within one year	11	(8,439)	-	(8,439)	(1,434)
NET CURRENT ASSETS		<u>77,447</u>	<u>-</u>	<u>77,447</u>	<u>82,236</u>
TOTAL ASSETS LESS CURRENT LIABILITIES		93,605	249,061	342,666	355,238
NET ASSETS		<u>93,605</u>	<u>249,061</u>	<u>342,666</u>	<u>355,238</u>
FUNDS	12				
Unrestricted funds				93,605	100,257
Restricted funds				<u>249,061</u>	<u>254,981</u>
TOTAL FUNDS				<u>342,666</u>	<u>355,238</u>

The notes form part of these financial statements

**GAINSBOROUGH ADVENTURE PLAYGROUND
LIMITED**

**BALANCE SHEET - CONTINUED
AT 31 MARCH 2018**

The charitable company is entitled to exemption from audit under Section 477 of the Companies Act 2006 for the year ended 31 March 2018.

The members have not required the company to obtain an audit of its financial statements for the year ended 31 March 2018 in accordance with Section 476 of the Companies Act 2006.

The trustees acknowledge their responsibilities for

- (a) ensuring that the charitable company keeps accounting records that comply with Sections 386 and 387 of the Companies Act 2006 and
- (b) preparing financial statements which give a true and fair view of the state of affairs of the charitable company as at the end of each financial year and of its surplus or deficit for each financial year in accordance with the requirements of Sections 394 and 395 and which otherwise comply with the requirements of the Companies Act 2006 relating to financial statements, so far as applicable to the charitable company.

These financial statements have been prepared in accordance with the special provisions of Part 15 of the Companies Act 2006 relating to charitable small companies.

The financial statements were approved by the Board of Trustees on 15 June 2018 and were signed on its behalf by:

Mr R P Doran -Trustee

**GAINSBOROUGH ADVENTURE PLAYGROUND
LIMITED**

**NOTES TO THE FINANCIAL STATEMENTS
FOR THE YEAR ENDED 31 MARCH 2018**

1. ACCOUNTING POLICIES

Basis of preparing the financial statements

The financial statements of the charitable company, which is a public benefit entity under FRS 102, have been prepared in accordance with the Charities SORP (FRS 102) 'Accounting and Reporting by Charities: Statement of Recommended Practice applicable to charities preparing their accounts in accordance with the Financial Reporting Standard applicable in the UK and Republic of Ireland (FRS 102) (effective 1 January 2015)', Financial Reporting Standard 102 'The Financial Reporting Standard applicable in the UK and Republic of Ireland' and the Companies Act 2006. The financial statements have been prepared under the historical cost convention.

Income

All income is recognised in the Statement of Financial Activities once the charity has entitlement to the funds, it is probable that the income will be received and the amount can be measured reliably.

Expenditure

Liabilities are recognised as expenditure as soon as there is a legal or constructive obligation committing the charity to that expenditure, it is probable that a transfer of economic benefits will be required in settlement and the amount of the obligation can be measured reliably. Expenditure is accounted for on an accruals basis and has been classified under headings that aggregate all cost related to the category. Where costs cannot be directly attributed to particular headings they have been allocated to activities on a basis consistent with the use of resources.

Tangible fixed assets

Depreciation is provided at the following annual rates in order to write off each asset over its estimated useful life.

Long leasehold	- 2% on cost
Office equipment	- 25% on reducing balance
Fixtures and fittings	- 25% on reducing balance
Play area equipment	- 25% on reducing balance

Stocks

Stocks are valued at the lower of cost and net realisable value, after making due allowance for obsolete and slow moving items.

Taxation

The charity is exempt from corporation tax on its charitable activities.

Fund accounting

Unrestricted funds can be used in accordance with the charitable objectives at the discretion of the trustees.

Restricted funds can only be used for particular restricted purposes within the objects of the charity. Restrictions arise when specified by the donor or when funds are raised for particular restricted purposes.

Further explanation of the nature and purpose of each fund is included in the notes to the financial statements.

Pension costs and other post-retirement benefits

The charitable company operates a defined contribution pension scheme. Contributions payable to the charitable company's pension scheme are charged to the Statement of Financial Activities in the period to which they relate.

**GAINSBOROUGH ADVENTURE PLAYGROUND
LIMITED**

**NOTES TO THE FINANCIAL STATEMENTS - CONTINUED
FOR THE YEAR ENDED 31 MARCH 2018**

2. OTHER TRADING ACTIVITIES

	31.3.18	31.3.17
	£	£
Fundraising events	3,078	2,136
Food sales	9,924	7,813
Trips and other activities	1,367	1,060
Playgroup/Nursery fees	38,107	96,699
Group fees	291	3,950
Pupil Premium	1,582	3,500
	<u>54,349</u>	<u>115,158</u>

3. INVESTMENT INCOME

	31.3.18	31.3.17
	£	£
Hire of building	25,366	630
Deposit account interest	37	46
	<u>25,403</u>	<u>676</u>

4. NET INCOME/(EXPENDITURE)

Net income/(expenditure) is stated after charging/(crediting):

	31.3.18	31.3.17
	£	£
Depreciation - owned assets	<u>11,299</u>	<u>11,925</u>

5. TRUSTEES' REMUNERATION AND BENEFITS

There were no trustees' remuneration or other benefits for the year ended 31 March 2018 nor for the year ended 31 March 2017.

Trustees' expenses

There were no trustees' expenses paid for the year ended 31 March 2018 nor for the year ended 31 March 2017.

6. STAFF COSTS

The average monthly number of employees during the year was as follows:

	31.3.18	31.3.17
Administration	1	1
Support	11	14
	<u>12</u>	<u>15</u>

No employees received emoluments in excess of £60,000.

**GAINSBOROUGH ADVENTURE PLAYGROUND
LIMITED**

**NOTES TO THE FINANCIAL STATEMENTS - CONTINUED
FOR THE YEAR ENDED 31 MARCH 2018**

7. COMPARATIVES FOR THE STATEMENT OF FINANCIAL ACTIVITIES

	Unrestricted funds £	Restricted fund £	Total funds £
INCOME AND ENDOWMENTS FROM			
Donations and legacies	51,267	-	51,267
Other trading activities	115,158	-	115,158
Investment income	676	-	676
Total	167,101	-	167,101
EXPENDITURE ON			
Raising funds	14,212	-	14,212
Charitable activities			
Playground	167,976	5,920	173,896
Total	182,188	5,920	188,108
NET INCOME/(EXPENDITURE)	(15,087)	(5,920)	(21,007)
RECONCILIATION OF FUNDS			
Total funds brought forward	115,344	260,901	376,245
TOTAL FUNDS CARRIED FORWARD	100,257	254,981	355,238

8. TANGIBLE FIXED ASSETS

	Long leasehold £	Office equipment £	Fixtures and fittings £	Play area equipment £	Totals £
COST					
At 1 April 2017	295,997	7,689	23,762	42,857	370,305
Additions	-	-	1,655	1,861	3,516
At 31 March 2018	295,997	7,689	25,417	44,718	373,821
DEPRECIATION					
At 1 April 2017	41,016	5,336	17,088	33,863	97,303
Charge for year	5,920	587	2,079	2,713	11,299
At 31 March 2018	46,936	5,923	19,167	36,576	108,602
NET BOOK VALUE					
At 31 March 2018	249,061	1,766	6,250	8,142	265,219
At 31 March 2017	254,981	2,353	6,674	8,994	273,002

Property assets of the Company are included at the cost of acquisition less accumulated depreciation.

**GAINSBOROUGH ADVENTURE PLAYGROUND
LIMITED**

**NOTES TO THE FINANCIAL STATEMENTS - CONTINUED
FOR THE YEAR ENDED 31 MARCH 2018**

8. TANGIBLE FIXED ASSETS - continued

They principally comprise the main operating base in purpose built premises on a leasehold site, subject to restrictions of its use to the current purpose.

Therefore, the property should not be viewed as an asset which could be liquidated in sale or used as security for borrowing.

9. STOCKS

	31.3.18	31.3.17
	£	£
Stocks	24	73
	<u> </u>	<u> </u>

10. DEBTORS: AMOUNTS FALLING DUE WITHIN ONE YEAR

	31.3.18	31.3.17
	£	£
Trade debtors	488	350
Prepayments and accrued income	4,114	4,833
	<u> </u>	<u> </u>
	4,602	5,183
	<u> </u>	<u> </u>

11. CREDITORS: AMOUNTS FALLING DUE WITHIN ONE YEAR

	31.3.18	31.3.17
	£	£
Trade creditors	57	-
Social security and other taxes	1,304	-
Accruals and deferred income	7,078	1,434
	<u> </u>	<u> </u>
	8,439	1,434
	<u> </u>	<u> </u>

12. MOVEMENT IN FUNDS

	At 1.4.17	Net movement in funds	At 31.3.18
	£	£	£
Unrestricted funds			
General fund	100,257	(6,652)	93,605
Restricted funds			
Property	254,981	(5,920)	249,061
	<u> </u>	<u> </u>	<u> </u>
TOTAL FUNDS	355,238	(12,572)	342,666
	<u> </u>	<u> </u>	<u> </u>

**GAINSBOROUGH ADVENTURE PLAYGROUND
LIMITED**

**NOTES TO THE FINANCIAL STATEMENTS - CONTINUED
FOR THE YEAR ENDED 31 MARCH 2018**

12. MOVEMENT IN FUNDS - continued

Net movement in funds, included in the above are as follows:

	Incoming resources £	Resources expended £	Movement in funds £
Unrestricted funds			
General fund	128,718	(135,370)	(6,652)
Restricted funds			
Property	-	(5,920)	(5,920)
TOTAL FUNDS	<u>128,718</u>	<u>(141,290)</u>	<u>(12,572)</u>

Comparatives for movement in funds

	At 1.4.16 £	Net movement in funds £	At 31.3.17 £
Unrestricted Funds			
General fund	115,344	(15,087)	100,257
Restricted Funds			
Property	260,901	(5,920)	254,981
TOTAL FUNDS	<u>376,245</u>	<u>(21,007)</u>	<u>355,238</u>

Comparative net movement in funds, included in the above are as follows:

	Incoming resources £	Resources expended £	Movement in funds £
Unrestricted funds			
General fund	167,101	(182,188)	(15,087)
Restricted funds			
Property	-	(5,920)	(5,920)
TOTAL FUNDS	<u>167,101</u>	<u>(188,108)</u>	<u>(21,007)</u>

As detailed in note 7 the property assets of the Company are considered to be subject to restrictions of their use other to their current purpose.

The trustees therefore consider that the net value of these property assets should be designated as a restricted fund. This has therefore been shown as a separate item in the financial statements.

13. RELATED PARTY DISCLOSURES

There were no related party transactions for the year ended 31 March 2018.

**GAINSBOROUGH ADVENTURE PLAYGROUND
LIMITED**

**DETAILED STATEMENT OF FINANCIAL ACTIVITIES
FOR THE YEAR ENDED 31 MARCH 2018**

	31.3.18 £	31.3.17 £
INCOME AND ENDOWMENTS		
Donations and legacies		
Donations	6,398	4,414
Grant - WLDC	15,000	15,000
Grant - Lincolnshire Playing Fields Association	500	-
Grant - Children in Need	24,190	19,578
Grant - Police and Crime Commissioner	350	-
Grant - Playgroup Deprivation	2,053	12,000
Grant - Other	475	275
	<hr/> 48,966	<hr/> 51,267
Other trading activities		
Fundraising events	3,078	2,136
Food sales	9,924	7,813
Trips and other activities	1,367	1,060
Playgroup/Nursery fees	38,107	96,699
Group fees	291	3,950
Pupil Premium	1,582	3,500
	<hr/> 54,349	<hr/> 115,158
Investment income		
Hire of building	25,366	630
Deposit account interest	37	46
	<hr/> 25,403	<hr/> 676
Total incoming resources	<hr/> 128,718	<hr/> 167,101
EXPENDITURE		
Other trading activities		
Food purchases	5,417	6,534
Activity costs	6,726	7,158
Fundraising expenses	483	520
	<hr/> 12,626	<hr/> 14,212
Support costs		
Management		
Support staff wages	63,796	100,414
Pensions	496	-
Rates and water	1,141	1,899
Insurance	3,788	3,846
Light and heat	3,096	4,659
Telephone	465	672
Postage and stationery	820	923
Board management costs	273	566
Carried forward	73,875	112,979

This page does not form part of the statutory financial statements

**GAINSBOROUGH ADVENTURE PLAYGROUND
LIMITED**

**DETAILED STATEMENT OF FINANCIAL ACTIVITIES
FOR THE YEAR ENDED 31 MARCH 2018**

	31.3.18 £	31.3.17 £
Management		
Brought forward	73,875	112,979
Property repairs	4,523	8,439
Maintenance charges	1,382	986
Cleaning	1,758	1,936
Subscriptions	3,255	2,679
Uniforms	36	-
Training	104	1,074
Mileage and travel	147	484
Sundry costs	97	-
Long leasehold	5,920	5,920
Plant and machinery	587	785
Fixtures and fittings	2,079	2,221
Computer equipment	2,713	2,999
	<hr/> 96,476	<hr/> 140,502
Finance		
Administration wages	31,600	32,854
Governance costs		
Accountancy fees	540	540
Professional fees	48	-
	<hr/> 588	<hr/> 540
Total resources expended	<hr/> 141,290	<hr/> 188,108
 Net expenditure	 <hr/> <hr/> (12,572)	 <hr/> <hr/> (21,007)

This page does not form part of the statutory financial statements