

Charity Registration No. 1029448

Company Registration No. 02733012 (England and Wales)

STROUD COURT COMMUNITY TRUST LIMITED
ANNUAL REPORT AND FINANCIAL STATEMENTS
FOR THE YEAR ENDED 31 MARCH 2018

STROUD COURT COMMUNITY TRUST LIMITED

CONTENTS

	Page
Trustees' report	1 - 5
Independent auditor's report	6 - 7
Statement of financial activities	8
Balance sheet	9
Statement of cash flows	10
Notes to the financial statements	11 - 26

STROUD COURT COMMUNITY TRUST LIMITED

TRUSTEES' REPORT (INCLUDING DIRECTORS' REPORT)

FOR THE YEAR ENDED 31 MARCH 2018

The Trustees present their report and financial statements for the year ended 31 March 2018.

The financial statements have been prepared in accordance with the accounting policies set out in note 1 to the financial statements and comply with the Trust's Memorandum and Articles of Association, the Companies Act 2006 and "Accounting and Reporting by Charities: Statement of Recommended Practice applicable to charities preparing their accounts in accordance with the Financial Reporting Standard applicable in the UK and Republic of Ireland (FRS 102)" (as amended for accounting periods commencing from 1 January 2016)

Objectives and activities

Objects and aims

The objects and aims of the Trust is to provide welfare services to resident and non-resident autistic adults.

Objectives, strategies and activities

The Trust via its Chief Executive and senior management team monitors, evaluates and where appropriate adopts new approaches and interventions as and when required. When vacancies arise the Trust assesses potential candidates in line with the admissions policy and procedure and determines whether services and support can be delivered to that individual as required.

The Trustees have paid due regard to guidance issued by the Charity Commission in deciding what activities the Trust should undertake.

Public benefit

The Trust is established for the provision of welfare and care services to autistic adults. This is primarily achieved through care of autistic adults through registered care homes.

The Trustees have referred to the guidance contained in the Charity Commission's general guidance on public benefit when reviewing the aims and objectives and in planning future activities.

Services provided in care facilities are expensive. The funding capacity would be outside the scope of all but a very few families. However, those fees are almost invariably fully paid, directly or indirectly, by the State.

The Trustees confirm that they have complied with the requirements of section 4 of the Charities Act 2011 to have due regard to the public benefit guidance published by the Charity Commission for England and Wales.

Achievements and performance

During the year the Trust provided care for 33 full-time residents. It has updated several of its policies in line with current regulations and best practice requirements.

The Trust has continued to review, and where possible improve, the terms and conditions of employment for staff in order to attract and retain sufficient numbers of high quality individuals.

The Trust recognises that environmental factors have a significant impact on the well being of all clients, and has determined to improve the quality of all accommodation across site in line with improved autism understanding and best evidence-based practice. This is a long term commitment requiring a long term fund raising strategy. The nature of long term fund raising is that it is not restricted to financial periods. The trustees believe the overall performance year on year to be satisfactory.

The fundraising performance is considered satisfactory as in addition to donations received, several significant sources for the development appeal can be accessed once building work commences.

STROUD COURT COMMUNITY TRUST LIMITED

TRUSTEES' REPORT (CONTINUED)(INCLUDING DIRECTORS' REPORT)

FOR THE YEAR ENDED 31 MARCH 2018

Volunteers

The organisation has benefited greatly from a twelve month project by volunteers of Nailsworth Rotary Club, funded by donations from The Gloucestershire Masonic Charity Action and Old Wycliffian Lodge, to restore a one hundred and thirty meter walkway from the main house down to a sheltered and private valley. The refurbishment of the pathway and installation of a sturdy wooden handrail has made the valley area far more accessible to residents.

Details of donations received are shown in note 2 to the accounts.

The Trust has limited investments which were placed on short term deposit without taking significant risk. The fund is retained to protect against unforeseen operating circumstances and for use in the ongoing development.

The Trust provides long term residential care and as such seeks to fill any vacancy arising as soon as possible with a suitable individual. Quality of care with financial stability are key measures. In addition to independent assessments, key performance indicators are employee absence rates and staff turnover.

In common with other organisations in the care sector recruitment remains a significant challenge. This is an area in which the trustees and management team have and continue to take positive actions. On a positive note, once employed, retention rates remain high.

Financial review

Policy on reserves

Reserves are set aside to provide financial stability and to support long term strategic aims of the Trust. The Trustees have identified two levels of reserves as being necessary.

The Trustees consider it prudent that unrestricted reserves should be sufficient to cover short term working capital. £624,000 will be retained in line with Stroud Court Community Trust's Reserves Policy Statement to cover three months operational activity.

Principal funding sources

Fees are obtained from local authorities and primary care trusts. Fees are used to fund the day to day operations of the Trust. The Trust does not allocate donations to operational costs but always seeks to recover in full the cost of services from statutory purchasers. Donations and other income are used to enhance the quality of life of clients by providing funding for specific equipment, capital items and services that are not normally recoverable through fees.

The present level of funding and assets held are adequate to support the continuation of the Trust and the Trustees consider the financial position of the charity to be satisfactory.

Financial instruments

Objectives and policies

The Charity's activities expose it to a number of financial risks including credit risk, cash flow risk and liquidity risk. The use of financial derivatives is governed by the charity's policies approved by the board of trustees, which provide written principles on the use of financial derivatives to manage these risks. The charity does not use derivative financial instruments for speculative purposes.

Major risks and management of those risks

Operations and finance

The Trustees have assessed the major risks to which the Trust is exposed, in particular those related to the operations and finances of the Trust and are satisfied that systems and procedures are in place to manage exposure to the major risks. A report is produced each year of the major risks, what the implications maybe, whether it is significant and who is responsible for monitoring it.

STROUD COURT COMMUNITY TRUST LIMITED

TRUSTEES' REPORT (CONTINUED)(INCLUDING DIRECTORS' REPORT) FOR THE YEAR ENDED 31 MARCH 2018

Credit risk

The Charity's principal financial assets are bank balances and cash, trade and other receivables, and investments.

The Charity's credit risk is primarily attributable to its trade receivables. The amounts presented in the balance sheet are net of allowances for doubtful receivables. An allowance for impairment is made where there is an identified loss event which, based on previous experience, is evidence of a reduction in the recoverability of the cash flows.

The credit risk on liquid funds and derivative financial instruments is limited because the counterparties are banks with high credit-ratings assigned by international credit-rating agencies.

The Charity has no significant concentration of credit risk, with exposure spread over a large number of counterparties and customers.

Liquidity risk

In order to maintain liquidity to ensure that sufficient funds are available for ongoing operations and future developments, the Charity uses a mixture of long-term and short-term debt finance.

Further details regarding liquidity risk can be found in the Statement of accounting policies in the financial statements.

Structure, governance and management

Nature of governing document

The charity is controlled by its governing document, a deed of trust, and constitutes a charitable company, limited by guarantee, as defined by the Companies Act 2006.

The Trust is registered as a charitable company limited by guarantee and was constituted under a Memorandum of Association dated 21 July 1992, and is a registered charity number 1029448.

Also the company is regulated under the Health and Social Care Act 2008 (Regulated Activities) Regulations 2014 and the Care Quality Commission (Registration) Regulations 2009.

The principal object of the Trust is to provide welfare services to resident and non-resident people with autistic spectrum disorders. Work is undertaken by the Chief Executive and the management team to enhance and develop the care environment that has been established during the past twenty six years.

There have been no changes in the objectives since the last annual report.

The Trustees, who are also the directors for the purpose of company law, and who served during the year were:

Mr S.R.H. Bruton	(Retired 14 October 2017)
Mrs J.W. Lusty	
Mr A.D E. Bateson	
Mrs V.J. Fenwick	
Mr G Slade	
Mrs J Lewis	
Mr P Cadle	
Mrs M Bruton-Cox	
Mrs E. Blundell	(Appointed 14 October 2017)

STROUD COURT COMMUNITY TRUST LIMITED

TRUSTEES' REPORT (CONTINUED)(INCLUDING DIRECTORS' REPORT)

FOR THE YEAR ENDED 31 MARCH 2018

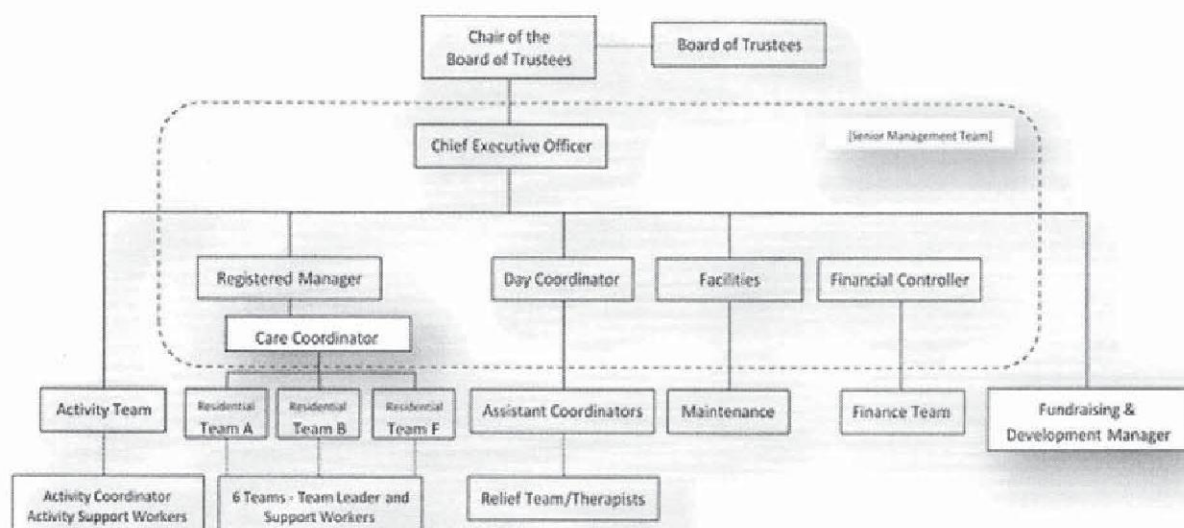
Recruitment and appointment of Trustees

The management of the Trust is the responsibility of the Trustees who are elected and co-opted under the terms of the Memorandum and Articles of Association.

The Memorandum states that one third of the Trustees are required to retire by rotation. This year P. Cadle, M. Bruton-Cox and J. Lusty retire and will offer themselves for re-election depending on support from at least two members of the remaining trustees.

None of the Trustees has any beneficial interest in the company. All of the Trustees are members of the company and guarantee to contribute £1 in the event of a winding up.

Organisational structure



The charity is organised so that the Trustees and management team meet regularly to manage its affairs. In total there are nine Trustee positions (one currently vacant), thirteen administration staff, two household staff and four maintenance staff. All the remaining employees work directly with service users to fulfil the charity's objectives.

The day-to-day management of the charity is delegated to C Atkins (Chief Executive), S Barnard (Registered Manager), A Palmer and V Davies.

Trustees set and monitor the strategic aims whilst the senior management team (SMT) carry out the day to day operations. The trustees formally meet quarterly to review and assess performance. The SMT, in addition to daily activity, meet monthly to review and assess matters.

Induction and training of trustees

The Trust works in partnership with the National Autistic Society and follows their guidelines for the induction and training of Trustees.

STROUD COURT COMMUNITY TRUST LIMITED

TRUSTEES' REPORT (CONTINUED)(INCLUDING DIRECTORS' REPORT)

FOR THE YEAR ENDED 31 MARCH 2018

Key management personnel remuneration

Remuneration is set in accordance with market rates.

Statement of Trustees' responsibilities

The Trustees, who are also the directors of Stroud Court Community Trust Limited for the purpose of company law, are responsible for preparing the Trustees' Report and the financial statements in accordance with applicable law and United Kingdom Accounting Standards (United Kingdom Generally Accepted Accounting Practice).

Company Law requires the Trustees to prepare financial statements for each financial year which give a true and fair view of the state of affairs of the Trust and of the incoming resources and application of resources, including the income and expenditure, of the charitable company for that year.

In preparing these financial statements, the Trustees are required to:

- select suitable accounting policies and then apply them consistently;
- observe the methods and principles in the Charities SORP;
- make judgements and estimates that are reasonable and prudent;
- state whether applicable UK Accounting Standards have been followed, subject to any material departures disclosed and explained in the financial statements; and
- prepare the financial statements on the going concern basis unless it is inappropriate to presume that the Trust will continue in operation.

The Trustees are responsible for keeping adequate accounting records that disclose with reasonable accuracy at any time the financial position of the Trust and enable them to ensure that the financial statements comply with the Companies Act 2006. They are also responsible for safeguarding the assets of the Trust and hence for taking reasonable steps for the prevention and detection of fraud and other irregularities.

Auditor

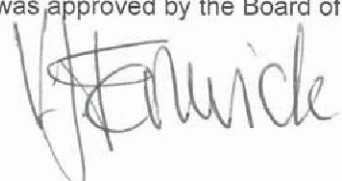
The auditors, Baldwins Audit Services, Churchill House, 59 Lichfield Street, Walsall, West Midlands, WS4 2BX, will be proposed for re-appointment at the annual general meeting.

The Directors' report has been prepared in accordance with the special provisions relating to small companies within Part 15 of the Companies Act 2006.

Disclosure of information to auditor

Each of the Trustees has confirmed that there is no information of which they are aware which is relevant to the audit, but of which the auditor is is unaware. They have further confirmed that they have taken appropriate steps to identify such relevant information and to establish that the auditor is aware of such information.

The Trustees' report was approved by the Board of Trustees.



Mrs V.J. Fenwick

Trustee

Dated: 9 August 2018

STROUD COURT COMMUNITY TRUST LIMITED

INDEPENDENT AUDITOR'S REPORT

TO THE MEMBERS OF STROUD COURT COMMUNITY TRUST LIMITED

Opinion

We have audited the financial statements of Stroud Court Community Trust Limited (the 'Trust') for the year ended 31 March 2018 which comprise the Statement of Financial Activities, the Balance Sheet, the Statement of Cash Flows and the notes to the financial statements, including a summary of significant accounting policies. The financial reporting framework that has been applied in their preparation is applicable law and United Kingdom Accounting Standards, including Financial Reporting Standard 102 *The Financial Reporting Standard applicable in the UK and Republic of Ireland* (United Kingdom Generally Accepted Accounting Practice).

In our opinion, the financial statements:

- give a true and fair view of the state of the charitable company's affairs as at 31 March 2018 and of its incoming resources and application of resources, for the year then ended;
- have been properly prepared in accordance with United Kingdom Generally Accepted Accounting Practice; and
- have been prepared in accordance with the requirements of the Companies Act 2006.

Basis for opinion

We conducted our audit in accordance with International Standards on Auditing (UK) (ISAs (UK)) and applicable law. Our responsibilities under those standards are further described in the Auditor's responsibilities for the audit of the accounts section of our report. We are independent of the Trust in accordance with the ethical requirements that are relevant to our audit of the accounts in the UK, including the FRC's Ethical Standard, and we have fulfilled our other ethical responsibilities in accordance with these requirements. We believe that the audit evidence we have obtained is sufficient and appropriate to provide a basis for our opinion.

Conclusions relating to going concern

We have nothing to report in respect of the following matters in relation to which the ISAs (UK) require us to report to you where:

- the Trustees' use of the going concern basis of accounting in the preparation of the financial statements is not appropriate; or
- the Trustees have not disclosed in the financial statements any identified material uncertainties that may cast significant doubt about the Trust's ability to continue to adopt the going concern basis of accounting for a period of at least twelve months from the date when the financial statements are authorised for issue.

Other information

The other information comprises the information included in the annual report, other than the financial statements and our auditor's report thereon. The Trustees are responsible for the other information. Our opinion on the financial statements does not cover the other information and, except to the extent otherwise explicitly stated in our report, we do not express any form of assurance conclusion thereon.

In connection with our audit of the financial statements, our responsibility is to read the other information and, in doing so, consider whether the other information is materially inconsistent with the financial statements or our knowledge obtained in the audit or otherwise appears to be materially misstated. If we identify such material inconsistencies or apparent material misstatements, we are required to determine whether there is a material misstatement in the financial statements or a material misstatement of the other information. If, based on the work we have performed, we conclude that there is a material misstatement of this other information, we are required to report that fact.

We have nothing to report in this regard.

Opinions on other matters prescribed by the Companies Act 2006

In our opinion, based on the work undertaken in the course of our audit:

- the information given in the Trustees' Report, which includes the Directors' Report prepared for the purposes of company law, for the financial year for which the financial statements are prepared is consistent with the financial statements; and
- the Directors' Report included within the Trustees' Report has been prepared in accordance with applicable legal requirements.

STROUD COURT COMMUNITY TRUST LIMITED

INDEPENDENT AUDITOR'S REPORT (CONTINUED)

TO THE MEMBERS OF STROUD COURT COMMUNITY TRUST LIMITED

Matters on which we are required to report by exception

In the light of the knowledge and understanding of the Trust and its environment obtained in the course of the audit, we have not identified material misstatements in the Directors' Report included within the Trustees' Report.

We have nothing to report in respect of the following matters in relation to which the Companies Act 2006 requires us to report to you if, in our opinion:

- adequate accounting records have not been kept, or returns adequate for our audit have not been received from branches not visited by us; or
- the financial statements are not in agreement with the accounting records and returns; or
- certain disclosures of trustees' remuneration specified by law are not made; or
- we have not received all the information and explanations we require for our audit; or
- the Trustees were not entitled to prepare the financial statements in accordance with the small companies regime and take advantage of the small companies' exemptions in preparing the Trustees' Report and from the requirement to prepare a Strategic Report.

Responsibilities of Trustees

As explained more fully in the Statement of Trustees' Responsibilities, the Trustees, who are also the directors of the Trust for the purpose of company law, are responsible for the preparation of the financial statements and for being satisfied that they give a true and fair view, and for such internal control as the directors determine is necessary to enable the preparation of financial statements that are free from material misstatement, whether due to fraud or error.

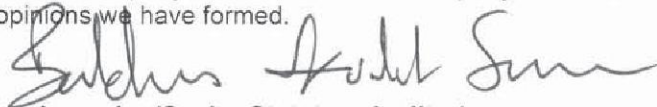
In preparing the financial statements, the Trustees are responsible for assessing the Trust's ability to continue as a going concern, disclosing, as applicable, matters related to going concern and using the going concern basis of accounting unless the Trustees either intend to liquidate the company or to cease operations, or have no realistic alternative but to do so.

Auditor's responsibilities for the audit of the financial statements

Our objectives are to obtain reasonable assurance about whether the financial statements as a whole are free from material misstatement, whether due to fraud or error, and to issue an auditor's report that includes our opinion. Reasonable assurance is a high level of assurance, but is not a guarantee that an audit conducted in accordance with ISAs (UK) will always detect a material misstatement when it exists. Misstatements can arise from fraud or error and are considered material if, individually or in the aggregate, they could reasonably be expected to influence the economic decisions of users taken on the basis of these financial statements.

A further description of our responsibilities for the audit of the financial statements is located on the Financial Reporting Council's website at: <http://www.frc.org.uk/auditorsresponsibilities>. This description forms part of our auditor's report.

This report is made solely to the charitable company's members, as a body, in accordance with Chapter 3 of Part 16 of the Companies Act 2006. Our audit work has been undertaken so that we might state to the charitable company's members those matters we are required to state to them in an auditors' report and for no other purpose. To the fullest extent permitted by law, we do not accept or assume responsibility to anyone other than the charitable company and the charitable company's members as a body, for our audit work, for this report, or for the opinions we have formed.



Mark Handscombe (Senior Statutory Auditor)
for and on behalf of Baldwins Audit Services

9 August 2018

Churchill House
59 Lichfield Street, Walsall
West Midlands, WS4 2BX

STROUD COURT COMMUNITY TRUST LIMITED

STATEMENT OF FINANCIAL ACTIVITIES INCLUDING INCOME AND EXPENDITURE ACCOUNT FOR THE YEAR ENDED 31 MARCH 2018

	Notes	Unrestricted funds general £	Unrestricted funds designated £	Restricted funds £	Total 2018 £	Total 2017 £
<u>Income and endowments from:</u>						
Donations and legacies	3	20,093	-	46,337	66,430	99,093
Charitable activities	4	2,405,050	-	43,091	2,448,141	2,338,841
Investments	5	8,349	-	-	8,349	25,441
Other income	6	6,843	-	-	6,843	1,349
Total income		2,440,335	-	89,428	2,529,763	2,464,724
<u>Expenditure on:</u>						
Raising funds	7	33,345	-	-	33,345	33,675
Charitable activities	8	2,545,141	-	38,349	2,583,490	2,481,375
Total resources expended		2,578,486	-	38,349	2,616,835	2,515,050
Net (expenditure)/income for the year/ Net (outgoing)/incoming resources		(138,151)	-	51,079	(87,072)	(50,326)
<u>Other recognised gains and losses</u>						
Actuarial gain on defined benefit pension schemes		124,000	-	-	124,000	211,000
Net movement in funds		(14,151)	-	51,079	36,928	160,674
Fund balances at 1 April 2017		1,428,809	407,438	273,450	2,109,697	1,949,023
Fund balances at 31 March 2018		1,414,658	407,438	324,529	2,146,625	2,109,697

The statement of financial activities includes all gains and losses recognised in the year.

All income and expenditure derive from continuing activities.

The statement of financial activities also complies with the requirements for an income and expenditure account under the Companies Act 2006.

STROUD COURT COMMUNITY TRUST LIMITED

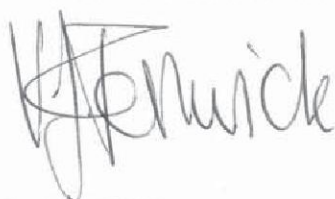
BALANCE SHEET

AS AT 31 MARCH 2018

	Notes	2018 £	£	2017 £	£
Fixed assets					
Tangible assets	13		909,577		951,396
Current assets					
Debtors	14	100,939		93,868	
Cash at bank and in hand		1,445,556		1,450,989	
		1,546,495		1,544,857	
Creditors: amounts falling due within one year	15	(188,447)		(167,556)	
Net current assets			1,358,048		1,377,301
Total assets less current liabilities			2,267,625		2,328,697
Creditors: amounts falling due after more than one year	16		(160,000)		(160,000)
Provisions for liabilities			-		(59,000)
Net assets excluding pension surplus/(deficit)			2,107,625		2,109,697
Defined benefit pension surplus	18		39,000		-
Net assets			2,146,625		2,109,697
Income funds					
Restricted funds	19		324,529		273,450
<u>Unrestricted funds</u>					
Designated funds	20	407,438		407,438	
General unrestricted funds		1,414,658		1,428,809	
			1,822,096		1,836,247
			2,146,625		2,109,697

The financial statements were approved by the Trustees on 9 August 2018

Mrs V.J. Fenwick
Trustee



Company Registration No. 02733012

STROUD COURT COMMUNITY TRUST LIMITED

STATEMENT OF CASH FLOWS

FOR THE YEAR ENDED 31 MARCH 2018

	Notes	2018 £	£	2017 £	£
Cash flows from operating activities					
Cash absorbed by operations	24		(6,532)		(32,095)
Investing activities					
Purchase of tangible fixed assets		(7,250)		(38,240)	
Interest received		8,349		25,441	
Net cash generated from/(used in) investing activities			1,099		(12,799)
Net cash used in financing activities			-		-
Net decrease in cash and cash equivalents			(5,433)		(44,894)
Cash and cash equivalents at beginning of year			1,450,989		1,495,883
Cash and cash equivalents at end of year			1,445,556		1,450,989

STROUD COURT COMMUNITY TRUST LIMITED

NOTES TO THE FINANCIAL STATEMENTS

FOR THE YEAR ENDED 31 MARCH 2018

1 Accounting policies

Charity information

Stroud Court Community Trust Limited is a private company limited by guarantee incorporated in England and Wales. The registered office is Stroud Court, Longfords, MINCHINHAMPTON, Glos, GL6 9AN.

1.1 Accounting convention

The financial statements have been prepared in accordance with the Trust's Memorandum and Articles of Association, the Companies Act 2006 and "Accounting and Reporting by Charities: Statement of Recommended Practice applicable to charities preparing their accounts in accordance with the Financial Reporting Standard applicable in the UK and Republic of Ireland (FRS 102)" (as amended for accounting periods commencing from 1 January 2016). The Trust is a Public Benefit Entity as defined by FRS 102.

The financial statements are prepared in sterling, which is the functional currency of the Trust. Monetary amounts in these financial statements are rounded to the nearest £.

The financial statements have been prepared under the historical cost convention. The principal accounting policies adopted are set out below.

1.2 Going concern

At the time of approving the financial statements, the Trustees have a reasonable expectation that the Trust has adequate resources to continue in operational existence for the foreseeable future. Thus the Trustees continue to adopt the going concern basis of accounting in preparing the financial statements.

1.3 Charitable funds

General funds are unrestricted funds which are available for use at the discretion of the Trustees in furtherance of the general objectives of the Charity and which have not been designated for other purposes.

Designated funds comprise unrestricted funds that have been set aside by the Trustees for particular purposes. The aim and use of each designated fund is set out in the notes to the financial statements.

Restricted funds are funds which are to be used in accordance with the specific restrictions imposed by donors which have been raised by the Charity for particular purposes. The cost of raising and administering such funds are charged against the specific fund. The aim and use of each restricted fund is set out in the notes to the financial statements.

1.4 Incoming resources

Voluntary income including donations, gifts, legacies and grants that provide core funding or are of a general nature is recognised when the Charity has entitlement to the funds, certainty or receipt and the amount can be measured with sufficient reliability.

Donations and legacies are recognised on a receivable basis where there is certainty of receipt and the amount can be reliably measured.

Turnover is measured at the fair value of the consideration received or receivable and represents amounts receivable for goods and services provided in the normal course of business, net of discounts, VAT and other sales related taxes.

STROUD COURT COMMUNITY TRUST LIMITED

NOTES TO THE FINANCIAL STATEMENTS (CONTINUED)

FOR THE YEAR ENDED 31 MARCH 2018

1 Accounting policies

(Continued)

1.5 Resources expended

Expenditure

All expenditure is recognised in the period in which a liability is incurred and has been classified under headings that aggregate all costs relating to that category. Where costs cannot be directly attributed to particular headings they have been allocated on a basis consistent with the use of resources, with central staff costs allocated on the basis of time spent, and depreciation charges allocated on the portion of the asset's use. Other support costs are allocated based on the spread of staff costs.

Raising funds

These are costs associated with attracting voluntary income and the costs of trading for fundraising purposes.

Charitable activities

Charitable expenditure comprises those costs incurred by the Charity in the delivery of its activities and services for beneficiaries. It includes both costs that can be allocated directly to such activities and those costs of an indirect nature necessary to support them.

Support costs

Support costs are those costs incurred in support of expenditure on the objects of the Charity and include project management and governance carried out at headquarters. These have been allocated entirely to the main charitable activity of the Charity.

1.6 Tangible fixed assets

Individual fixed assets costing £1,000 or more are initially recorded at cost and include any incidental expenses of acquisition.

Depreciation is recognised so as to write off the cost or valuation of assets less their residual values over their useful lives on the following bases:

Freehold land and buildings	2% on cost
Furniture and equipment	20% on cost
Motor vehicles	25% on cost

The gain or loss arising on the disposal of an asset is determined as the difference between the sale proceeds and the carrying value of the asset, and is recognised in net income/(expenditure) for the year.

1.7 Impairment of fixed assets

At each reporting end date, the Trust reviews the carrying amounts of its tangible assets to determine whether there is any indication that those assets have suffered an impairment loss. If any such indication exists, the recoverable amount of the asset is estimated in order to determine the extent of the impairment loss (if any).

Intangible assets with indefinite useful lives and intangible assets not yet available for use are tested for impairment annually, and whenever there is an indication that the asset may be impaired.

1.8 Cash and cash equivalents

Cash and cash equivalents include cash in hand, deposits held at call with banks, other short-term liquid investments with original maturities of three months or less, and bank overdrafts. Bank overdrafts are shown within borrowings in current liabilities.

STROUD COURT COMMUNITY TRUST LIMITED

NOTES TO THE FINANCIAL STATEMENTS (CONTINUED)

FOR THE YEAR ENDED 31 MARCH 2018

1 Accounting policies

(Continued)

1.9 Financial instruments

The Trust has elected to apply the provisions of Section 11 'Basic Financial Instruments' and Section 12 'Other Financial Instruments Issues' of FRS 102 to all of its financial instruments.

Financial instruments are recognised in the Trust's balance sheet when the Trust becomes party to the contractual provisions of the instrument.

Financial assets and liabilities are offset, with the net amounts presented in the financial statements, when there is a legally enforceable right to set off the recognised amounts and there is an intention to settle on a net basis or to realise the asset and settle the liability simultaneously.

Basic financial assets

Basic financial assets, which include debtors and cash and bank balances, are initially measured at transaction price including transaction costs and are subsequently carried at amortised cost using the effective interest method unless the arrangement constitutes a financing transaction, where the transaction is measured at the present value of the future receipts discounted at a market rate of interest. Financial assets classified as receivable within one year are not amortised.

Basic financial liabilities

Basic financial liabilities, including creditors and bank loans are initially recognised at transaction price unless the arrangement constitutes a financing transaction, where the debt instrument is measured at the present value of the future payments discounted at a market rate of interest. Financial liabilities classified as payable within one year are not amortised.

Debt instruments are subsequently carried at amortised cost, using the effective interest rate method.

Trade creditors are obligations to pay for goods or services that have been acquired in the ordinary course of operations from suppliers. Amounts payable are classified as current liabilities if payment is due within one year or less. If not, they are presented as non-current liabilities. Trade creditors are recognised initially at transaction price and subsequently measured at amortised cost using the effective interest method.

Derecognition of financial liabilities

Financial liabilities are derecognised when the Trust's contractual obligations expire or are discharged or cancelled.

1.10 Employee benefits

The cost of any unused holiday entitlement is recognised in the period in which the employee's services are received.

Termination benefits are recognised immediately as an expense when the Trust is demonstrably committed to terminate the employment of an employee or to provide termination benefits.

STROUD COURT COMMUNITY TRUST LIMITED

NOTES TO THE FINANCIAL STATEMENTS (CONTINUED)

FOR THE YEAR ENDED 31 MARCH 2018

1 Accounting policies

(Continued)

1.11 Retirement benefits

Pensions and other post retirement obligations

The Trust operates a defined contribution pension scheme. Contributions to this scheme are charged to the SOFA in the period in which they become payable.

The Trust operates a defined benefit scheme, which is closed to new members. This scheme is part of the Gloucestershire County Council Pension Fund, which is a multi-employer scheme whereby the Trusts shares of the underlying assets and liabilities are identified at the date of the latest triennial valuation undertaken by the scheme's actuary. The scheme is accounted for as a defined benefit scheme in accordance with FRS 102.

The scheme is funded and the assets are held separately from those of the Trust in separate trustee administered funds. Pension scheme assets are measured at fair value and liabilities are measured on an actuarial basis. The actuarial valuations are obtained triennially and are updated at each balance sheet date. The amounts charged to operating results are the current service costs and gains and losses on settlements and curtailments. They are included as part of staff costs. Past service costs are recognised immediately, the costs are recognised over the period until vesting occurs. The expected return on assets and the interest cost are shown as a net finance amount. Actuarial gains and losses are recognised immediately in other gains and losses.

2 Critical accounting estimates and judgements

In the application of the Trust's accounting policies, the Trustees are required to make judgements, estimates and assumptions about the carrying amount of assets and liabilities that are not readily apparent from other sources. The estimates and associated assumptions are based on historical experience and other factors that are considered to be relevant. Actual results may differ from these estimates.

The estimates and underlying assumptions are reviewed on an ongoing basis. Revisions to accounting estimates are recognised in the period in which the estimate is revised where the revision affects only that period, or in the period of the revision and future periods where the revision affects both current and future periods.

STROUD COURT COMMUNITY TRUST LIMITED

NOTES TO THE FINANCIAL STATEMENTS (CONTINUED)

FOR THE YEAR ENDED 31 MARCH 2018

3 Donations and legacies

	Unrestricted general funds	Restricted funds	Total 2018	Total 2017
	£	£	£	£
Donations and gifts	20,093	46,337	66,430	48,342
Legacies receivable	-	-	-	50,751
	20,093	46,337	66,430	99,093
For the year ended 31 March 2017	52,134	46,959		99,093
Donations and gifts				
Jack Lane Charitable Trust	-	1,000	1,000	500
Gloucestershire Masonic Charity Action	-	4,000	4,000	920
D'Oyly Carte Charitable Trust	-	3,000	3,000	-
Boshier-Hinton Foundation	-	-	-	4,888
Barnwood Trust	-	1,000	1,000	6,500
M. Edwards and V. Wood	-	-	-	5,000
Charles Irving	-	7,362	7,362	1,500
Langtree Trust	-	750	750	-
Batchworth Trust	5,000	-	5,000	-
Childwick Trust	-	20,000	20,000	-
Other	15,093	9,225	24,318	29,034
	20,093	46,337	66,430	48,342
Legacies receivable				
B.S. Mawer legacy	-	-	-	50,751
	-	-	-	50,751

STROUD COURT COMMUNITY TRUST LIMITED

NOTES TO THE FINANCIAL STATEMENTS (CONTINUED)

FOR THE YEAR ENDED 31 MARCH 2018

4 Charitable activities

	2018 £	2017 £
Fees received	2,448,141	2,338,841
Analysis by fund		
Unrestricted funds - general	2,405,050	
Restricted funds	43,091	
	2,448,141	
For the year ended 31 March 2017		
Unrestricted funds - general		2,297,440
Restricted funds		41,401
		2,338,841

5 Investments

	2018 £	2017 £
Interest receivable on bank deposits	8,349	25,441

6 Other income

	2018 £	2017 £
Other income	6,843	1,349

7 Raising funds

	2018 £	2017 £
<u>Fundraising and publicity</u>		
Staff costs	33,345	33,675
	33,345	33,675

STROUD COURT COMMUNITY TRUST LIMITED

NOTES TO THE FINANCIAL STATEMENTS (CONTINUED)

FOR THE YEAR ENDED 31 MARCH 2018

8 Charitable activities

	2018 £	2017 £
Staff costs	1,792,482	1,775,963
Food	91,169	90,515
Resident costs	38,218	47,580
Medical	2,819	2,236
Registration fees	5,919	5,635
Therapists	25,897	27,120
Agency staff	259,765	164,443
Training	18,961	12,486
Welfare	4,436	4,613
Recruitment	2,744	6,857
Motor and travel	21,139	20,549
Legal and professional fees	24,945	18,725
Interest on defined benefit pension scheme	89,000	110,000
Expected return on pension scheme assets	(87,000)	(100,000)
Subscriptions and books	1,752	1,768
Other expenditure - mobility	16,298	23,501
	<u>2,308,544</u>	<u>2,211,991</u>
Share of support costs (see note 9)	266,946	261,384
Share of governance costs (see note 9)	8,000	8,000
	<u>2,583,490</u>	<u>2,481,375</u>
Analysis by fund		
Unrestricted funds - general	2,545,141	
Restricted funds	38,349	
	<u>2,583,490</u>	
For the year ended 31 March 2017		
Unrestricted funds - general		2,457,008
Restricted funds		24,367
		<u>2,481,375</u>

STROUD COURT COMMUNITY TRUST LIMITED

NOTES TO THE FINANCIAL STATEMENTS (CONTINUED)

FOR THE YEAR ENDED 31 MARCH 2018

9 Support costs

	Support costs	Governance costs	2018	2017	Basis of allocation
	£	£	£	£	
Depreciation	49,068	-	49,068	37,399	Estimated usage
Light and heat	38,500	-	38,500	39,532	Estimated usage
Rates and water	13,514	-	13,514	14,661	Estimated usage
Insurance	23,491	-	23,491	21,998	Estimated usage
Maintenance	80,777	-	80,777	88,289	Estimated usage
Household equipment and furniture	16,583	-	16,583	9,594	Estimated usage
Telephone	8,434	-	8,434	8,432	Estimated usage
Printing, postage and stationery	7,130	-	7,130	6,190	Estimated usage
Sundry expenses	50	-	50	12	Estimated usage
Cleaning	14,652	-	14,652	17,174	Estimated usage
Garden	1,334	-	1,334	1,561	Estimated usage
Admin fees	13,267	-	13,267	16,348	Estimated usage
Bank charges	146	-	146	194	Estimated usage
Audit and accountancy fees	-	8,000	8,000	8,000	Governance
	<u>266,946</u>	<u>8,000</u>	<u>274,946</u>	<u>269,384</u>	
Analysed between Charitable activities	<u>266,946</u>	<u>8,000</u>	<u>274,946</u>	<u>269,384</u>	

Governance costs includes payments to the auditors of £3,500 (2017- £3,250) for audit fees and £4,500 for non-audit services (2017 - £4,750).

10 Trustees

None of the Trustees (or any persons connected with them) received any remuneration or benefits from the Trust during the year.

No trustees have received any reimbursed expenses from the charity during the year,

STROUD COURT COMMUNITY TRUST LIMITED

NOTES TO THE FINANCIAL STATEMENTS (CONTINUED)

FOR THE YEAR ENDED 31 MARCH 2018

11 Employees

Number of employees

The average monthly number employees during the year was:

	2018 Number	2017 Number
Administration	13	13
Household	2	2
Maintenance	4	4
Residential/Day care	47	50
	<u>66</u>	<u>69</u>

Employment costs

	2018 £	2017 £
Wages and salaries	1,576,058	1,585,327
Social security costs	123,027	117,246
Other pension costs	126,742	107,065
	<u>1,825,827</u>	<u>1,809,638</u>

The number of employees whose annual remuneration was £60,000 or more were:

	2018 Number	2017 Number
£70,000 - £80,000	<u>1</u>	<u>1</u>

12 Taxation

The Charity is a registered charity and is therefore exempt from taxation.

STROUD COURT COMMUNITY TRUST LIMITED

NOTES TO THE FINANCIAL STATEMENTS (CONTINUED)

FOR THE YEAR ENDED 31 MARCH 2018

13 Tangible fixed assets

	Freehold land and buildings	Furniture and Motor vehicles equipment		Total
	£	£	£	£
Cost				
At 1 April 2017	1,221,979	381,250	134,138	1,737,367
Additions	-	7,250	-	7,250
At 31 March 2018	1,221,979	388,500	134,138	1,744,617
Depreciation and impairment				
At 1 April 2017	340,445	364,500	81,026	785,971
Depreciation charged in the year	24,440	6,954	17,675	49,069
At 31 March 2018	364,885	371,454	98,701	835,040
Carrying amount				
At 31 March 2018	857,094	17,046	35,437	909,577
At 31 March 2017	881,534	16,750	53,112	951,396

14 Debtors

	2018	2017
	£	£
Amounts falling due within one year:		
Trade debtors	39,282	40,673
Other debtors	5,708	4,227
Prepayments and accrued income	55,949	48,968
	100,939	93,868

15 Creditors: amounts falling due within one year

	2018	2017
	£	£
Other taxation and social security	30,157	27,912
Trade creditors	94,011	80,977
Other creditors	1,875	-
Accruals and deferred income	62,404	58,667
	188,447	167,556

STROUD COURT COMMUNITY TRUST LIMITED

NOTES TO THE FINANCIAL STATEMENTS (CONTINUED)

FOR THE YEAR ENDED 31 MARCH 2018

16 Creditors: amounts falling due after more than one year

	2018 £	2017 £
Other creditors	160,000	160,000

Other loans after five years

By an agreement dated 5 August 1982, the Secretary of State for Health agreed that if, and so long as, Stroud Court is occupied and used by the Trust for the purposes of a residential community for autistic people, the Secretary of State will not require the Trust to repay the £160,000 loan and interest covenanted to be paid secured by way of a second charge on the property, Stroud Court, dated 5 August 1982.

It is considered by the Board that the property will remain a residential community for autistic people for the foreseeable future. The estimated interest accrued at 31 March 2018, for which no provision has been made in the financial statements as a result, amounted to £452,000 (2017 - £448,000).

The aggregate amount of debts, at the balance sheet date, in respect of which security has been given by the company is as shown above. The deferred loan is secured against the freehold property as described above.

Provisions for liabilities	Notes	2018 £	2017 £
Retirement benefit obligations	18	-	59,000
		-	59,000

18 Retirement benefit schemes

The Trust operates a defined contribution pension scheme for all qualifying employees. The assets of the scheme are held separately from those of the Trust in an independently administered fund.

Defined benefit schemes

The Trust operates a funded defined benefit pension scheme, which is now closed to new members. The Trust also operates a defined contribution pension scheme. The assets of both schemes are held independently of the Trust.

The defined benefit scheme is part of the Gloucestershire County Council Pension Fund, which is a multi-employer scheme whereby the Trust's share of the underlying assets and liabilities are identified by the scheme actuary at the date of each triennial valuation.

The LPGS is a funded defined-benefit scheme, with the assets held in separate trustee-administered funds. The total contribution made for the year ended 31 March 2018 was £89,000 (2017 - £110,000), of which employer's contributions totalled £70,000 (2017 - £89,000) and employee's contributions totalled £19,000 (2017 - £21,000).

Contributions payable to the scheme at the end of the year are Nil (2017 - Nil).

The total employer contributions in the next year are expected to be £74,000.

STROUD COURT COMMUNITY TRUST LIMITED

NOTES TO THE FINANCIAL STATEMENTS (CONTINUED)

FOR THE YEAR ENDED 31 MARCH 2018

18 Retirement benefit schemes

(Continued)

Key assumptions

	2018 %	2017 %
Discount rate	2.70	2.60
Expected rate of increase of pensions in payment	2.40	2.40
Expected rate of salary increases	2.70	2.70

Mortality assumptions

The assumed life expectations on retirement at age 65 are:

	2018 Years	2017 Years
Retiring today		
- Males	22	22
- Females	25	25
Retiring in 20 years		
- Males	24	24
- Females	26	26

Amounts recognised in the profit and loss account:

	2018 £	2017 £
Current service cost	94,000	78,000
Net interest on defined benefit liability/(asset)	2,000	10,000
Total costs	96,000	88,000

Amounts taken to other comprehensive income:

	2018 £	2017 £
Actual return on scheme assets	(148,000)	(484,000)
Less: calculated interest element	87,000	100,000
Return on scheme assets excluding interest income	(61,000)	(384,000)
Actuarial changes related to obligations	(63,000)	173,000

STROUD COURT COMMUNITY TRUST LIMITED

NOTES TO THE FINANCIAL STATEMENTS (CONTINUED)

FOR THE YEAR ENDED 31 MARCH 2018

18 Retirement benefit schemes

(Continued)

The amounts included in the balance sheet arising from the Trust's obligations in respect of defined benefit plans are as follows:

	2018 £	2017 £
Present value of defined benefit obligations	3,479,000	3,421,000
Fair value of plan assets	(3,518,000)	(3,362,000)
(Surplus)/deficit in scheme	(39,000)	59,000

Movements in the present value of defined benefit obligations:

	2018 £
Liabilities at 1 April 2017	3,421,000
Current service cost	94,000
Benefits paid	(81,000)
Contributions from scheme members	19,000
Actuarial gains and losses	(63,000)
Interest cost	89,000
At 31 March 2018	3,479,000

The defined benefit obligations arise from plans which are wholly or partly funded.

Movements in the fair value of plan assets:

	2018 £
Fair value of assets at 1 April 2017	3,362,000
Interest income	87,000
Return on plan assets (excluding amounts included in net interest)	61,000
Benefits paid	(81,000)
Contributions by the employer	70,000
Contributions by scheme members	19,000
At 31 March 2018	3,518,000

STROUD COURT COMMUNITY TRUST LIMITED

NOTES TO THE FINANCIAL STATEMENTS (CONTINUED)

FOR THE YEAR ENDED 31 MARCH 2018

18 Retirement benefit schemes

(Continued)

The fair value of plan assets at the reporting period end was as follows:

	2018 £	2017 £
Equity instruments	2,357,060	2,387,020
Debt instruments	809,140	672,400
Property	281,440	235,340
Cash and cash equivalents	70,360	67,240
	<u>3,518,000</u>	<u>3,362,000</u>

19 Restricted funds

The income funds of the charity include restricted funds comprising the following unexpended balances of donations and grants held on trust for specific purposes:

	Balance at 1 April 2017 £	Movement in funds		Balance at 31 March 2018 £
		Incoming resources £	Resources expended £	
Mobility	108,277	43,091	(16,254)	135,114
The Quality Care appeal	103,264	28,605	-	131,869
Other restricted funds	54,942	12,732	(18,455)	49,219
Pool light and sound system	6,967	-	(2,640)	4,327
Interactive projector	-	5,000	(1,000)	4,000
	<u>273,450</u>	<u>89,428</u>	<u>(38,349)</u>	<u>324,529</u>

The Mobility fund represents income received from residents to pay for their travel and trip costs.

The Quality Care appeal represents income raised in order to carry out redevelopment work to buildings and grounds.

Other restricted funds are donations received in order to purchase equipment or provide support to the residents of Stroud Court.

The pool light and sound system fund represents the grant received specifically to purchase equipment for the pool.

The interactive projector fund represents the grant received specifically to purchase the interactive projector.

STROUD COURT COMMUNITY TRUST LIMITED

NOTES TO THE FINANCIAL STATEMENTS (CONTINUED)

FOR THE YEAR ENDED 31 MARCH 2018

20 Designated funds

The income funds of the charity include the following designated funds which have been set aside out of unrestricted funds by the trustees for specific purposes:

	Balance at 1 April 2017 £	Movement in funds		Balance at 31 March 2018 £
		Incoming resources £	Resources expended £	
Redevelopment fund	403,311	-	-	403,311
Other designated funds	4,127	-	-	4,127
	<u>407,438</u>	<u>-</u>	<u>-</u>	<u>407,438</u>

Other designated funds represent unrestricted donations received which have been set aside by the Trustees for particular purposes.

21 Analysis of net assets between funds

	General funds £	Redevelopment designated fund £	Other designated funds £	Restricted funds £	Total £
Fund balances at 31 March 2018 are represented by:					
Tangible assets	901,250	-	-	8,327	909,577
Current assets/(liabilities)	950,609	403,312	4,127	-	1,358,048
Long term liabilities	(160,000)	-	-	-	(160,000)
Pension scheme liability	39,000	-	-	-	39,000
	<u>1,730,859</u>	<u>403,312</u>	<u>4,127</u>	<u>8,327</u>	<u>2,146,625</u>

22 Charity status

The Charity is a Company limited by guarantee and consequently does not have share capital. Each of the Trustees is liable to contribute an amount not exceeding £1 towards the assets of the Company in the event of liquidation.

23 Related party transactions

Remuneration of key management personnel

The remuneration and benefits of key management personnel is as follows.

	2018 £	2017 £
Aggregate compensation	<u>253,859</u>	<u>242,048</u>

STROUD COURT COMMUNITY TRUST LIMITED

NOTES TO THE FINANCIAL STATEMENTS (CONTINUED)

FOR THE YEAR ENDED 31 MARCH 2018

23 Related party transactions

(Continued)

Transactions with related parties

During the year the Trust entered into the following transactions with related parties:

Michael Pain

During the year the Charity was invoiced £11,765 inclusive of VAT (2017: £11,765) for consultancy work carried out by Amber Business Services Limited, a company in which Michael Pain is a director. At the balance sheet date the amount due Michael Pain was £Nil (2017 - £Nil).

During the year, the following Trustees had relatives who were clients at Stroud Court:

J.W. Lusty
G.R. Kirk
A.D.E. Bateson
S.R.H. Bruton
G. Slade
J. Lewis
M. Bruton Cox
P. Cadle

24 Cash generated from operations

	2018 £	2017 £
Deficit for the year	(87,071)	(50,325)
Adjustments for:		
Investment income recognised in statement of financial activities	(8,349)	(25,441)
Depreciation and impairment of tangible fixed assets	49,068	45,849
Difference between pension charge and cash contributions	26,000	(1,000)
Movements in working capital:		
(Increase) in debtors	(7,071)	(29,895)
Increase in creditors	20,891	28,717
Cash absorbed by operations	(6,532)	(32,095)