

REGISTERED COMPANY NUMBER: 03785409 (England and Wales)
REGISTERED CHARITY NUMBER: 1076888

**Report of the Trustees and
Unaudited Financial Statements for the Year Ended 30 September 2018
for
THE SPIRES CENTRE**

Tudor John LLP
Chartered Accountants
Nightingale House
46-48 East Street
Epsom
Surrey
KT17 1HQ

THE SPIRES CENTRE

Contents of the Financial Statements for the year ended 30 September 2018

	Page
Report of the Trustees	1 to 10
Independent Examiner's Report	11
Statement of Financial Activities	12 to 13
Balance Sheet	14 to 15
Cash Flow Statement	16
Notes to the Cash Flow Statement	17
Notes to the Financial Statements	19 to 29
Detailed Statement of Financial Activities	30 to 31

THE SPIRES CENTRE (REGISTERED NUMBER: 03785409)

**Report of the Trustees
for the year ended 30 September 2018**

The trustees who are also directors of the charity for the purposes of the Companies Act 2006, present their report with the financial statements of the charity for the year ended 30 September 2018. The trustees have adopted the provisions of Accounting and Reporting by Charities: Statement of Recommended Practice applicable to charities preparing their accounts in accordance with the Financial Reporting Standard applicable in the UK and Republic of Ireland (FRS 102) (effective 1 January 2015).

THE SPIRES CENTRE (REGISTERED NUMBER: 03785409)

**Report of the Trustees
for the year ended 30 September 2018**

OBJECTIVES AND ACTIVITIES

Summary of the charity's objects

Spires is an award-winning charity that has been working with homeless and disadvantaged people in Streatham, South London, since 1990. Working with some of the most isolated and vulnerable people in our society, we currently support over 900 men and women every year.

'Inspiring positive change since 1990'

Our vision is to be the best support that we can in helping people move from lives of distress, isolation and insecurity to a future of greater stability and hope. The majority of our clients are homeless or have insecure accommodation, with many also facing complex issues such as long-term unemployment, problems with poor mental and physical health, addiction and substance abuse, or are imprisoned by sex work and suffering from sexual violence and trauma.

With the help of our 70+ strong volunteer team, we provide a range of services including our Rough Sleepers Space every weekday; twice-weekly women-only sessions; and a full adult learning timetable offering free classes and workshops. In addition to our centre services, our Spires Streetlink project provides outreach sessions to support women involved in sex work. Our Streetlink work aims to improve sex workers' personal and sexual safety and empower them to make lasting and positive life choices.

We provide a holistic approach in our support and recognise that effective partnership working with external agencies plays a significant role in being able to offer our clients a flexible and inclusive service that helps to empower each individual to tackle the root causes of their problems and to inspire long-lasting change.

Significant activities

The core of Spires' work is the provision of developmental services for individuals who are homeless and disadvantaged by their life circumstances. Although our centre allows us to deal with people's immediate needs (food, showers and a change of clothes), our aim is to break the cycle of homelessness and disadvantage and to help our clients build resilience and the need for crisis intervention. Therefore, all of our services focus on longer-term solutions. These services include one-to-one key worker support, housing and benefits advice, tenancy support, mental health support, access to onsite primary healthcare clinics, drug and alcohol advice and referrals, and specialist work with women involved in sex work and other vulnerable women as well a range of entry level adult learning activities.

Many individuals access Spires because they know they will get professional support and advice and good links with external specialist agencies. Others come because they struggle to fit into broader society, have little support or encouragement to move forward with their lives and have little opportunity elsewhere to build a social network of support. The aim for all of our service users, whatever their starting point, is that they will receive a level of support that will increase their confidence and enable them to make change and manage their own lives in a positive and fulfilling way.

Spires has always been committed to finding solutions, particularly for those who are not eligible for support from statutory services and this continues to be a priority. With rough sleeping continuing to increase it is of paramount importance that we offer our clients the chance to develop the tools and build the confidence to find their own solutions to overcoming homelessness and social exclusion.

Some clients may only need to visit us once. They have their immediate needs provided for and can be referred straight into the appropriate agency. Our more isolated and entrenched clients however will often take a lot longer. They have particularly chaotic lifestyles, and for them progress can be attending a meeting on time, visiting our outreach nurse or attending one of our drop-in adult learning classes.

Our Spires Streetlink project continues to be the major provider of outreach services to street-based sex workers in South London, delivering high quality services to women in need. Since 2016 these outreach and centre services have been expanded to also support women and other individuals sex working indoors. Our centre services now also include the Spires Sanctuary, an evening drop in held once a week for sex workers, transgender and people from the LGBTQ community who are involved in indoor sex work.

THE SPIRES CENTRE (REGISTERED NUMBER: 03785409)

Report of the Trustees for the year ended 30 September 2018

OBJECTIVES AND ACTIVITIES

Linking our clients to appropriate service providers both within Spires and those from external agencies remains a key objective for this project. Having been working with those involved in sex work or those at risk of becoming involved since 1998, our experience tells us that it is a harsh reality that the majority of the women we work with are facing multiple complex issues. Sexual and domestic violence as well as issues of unemployment, addiction and insecure housing are common themes. Many women have also been in care and are dealing with the trauma of child abuse; others have been in and out of prison. To that end, we have forged many local partnerships over the years with other voluntary and statutory services including the police, refuges and local authorities to ensure that our clients get the best support possible.

Our Adult Learning Centre underpins all of our client work at Spires and we continue to specialise in offering adult learning opportunities for people in the community who are often excluded from conventional learning. We believe that education and employment are the main routes out of poverty and an important way of stopping the vicious circle of homelessness. As part of the Lambeth Adult Learning Service our aim is to ensure there are no barriers to learning. Even our clients with the most vulnerable and chaotic lifestyles are encouraged to participate. We deliver easily accessible courses, while also offering an opportunity to learn in a positive and supportive environment. Our tutors help people to acquire the skills that will enable them to progress further with either more training or employment opportunities.

Through all of our services at Spires, we believe that by offering consistent, practical support and long term guidance, we will enable our clients to have the opportunity to be able to climb out of their cycle of poverty and disadvantage and rebuild their lives.

FINANCIAL REVIEW

Review of the charity's financial performance and position

The Statement of Financial Activities shows that incoming resources of £579,763 were at a similar level to 2017 (an increase of £3,074). Net outgoing resources in the year were £589,530 (an increase of £17,198 on 2017)

The table of restricted income include in note 5 to the Financial Statements sets out the levels of grant funding received.

Net assets in the balance sheet of £309,341 at the year end include functional fixed assets of £29,419 which to all intents and purposes are sunk costs. £65,533 of this relates to restricted funds, the balance being unrestricted funds.

Principal funding sources

A combination of funding from grant-making trusts and contracts with statutory funders has enabled the continuation of Spires' essential services to individuals in need. Spires remains equally appreciative of financial and in-kind support from many individuals, church communities, schools and supporters that continue to support our work each year so generously.

Grants from trusts account for approximately 60% of our annual income, with contracts and other assistance completing the picture at Spires. In an uncertain climate this combination of funding has enabled us to continue to deliver all our services and provide the security needed to make plans for the period ahead. The challenge for all small organisations like Spires is to achieve adequate and longer term funding in to the future.

An award by the Big Lottery Reaching Communities fund that started in May 2018 secures the future of our Streetlink work for the next three years.

Principal financial management policies

Spires has a simple financial structure and model revolving around the need to sustain a breakeven position, hopefully supported by a prudent level of free reserves. Surplus funds are maintained on bank deposit so as to maximise the opportunity to earn interest.

The Trustees review cash flow projections for a year ahead at each meeting and efforts to maintain grant funding are tailored according to the relative risk of activities running out of financial support. A key challenge is balancing the effort made to raise funds in relation to each activity's relative 'attraction' to potential funding sources.

Reserves policy

Free reserves are unrestricted funds not invested in fixed assets, designated for specific purposes or otherwise committed. The Trustees have established a policy of aiming to maintain free reserves of between three and six months of total resources expended, which equates to a figure of between £147,500 and £295,000. The Trustees are of opinion that reserves within this range are necessary to provide effective management and maintenance services. In the current year free reserves are a surplus of £71,990.

THE SPIRES CENTRE (REGISTERED NUMBER: 03785409)

**Report of the Trustees
for the year ended 30 September 2018**

FINANCIAL REVIEW

Although this currently falls below the policy figure, it should be noted that the creation of the designated funds 'Special Projects Fund' and the 'Emergency Support Fund' (p25) do not legally restrict the Trustees' discretion in how to apply the unrestricted funds which have been earmarked. In the event funds were needed to ensure the continuation of our services it would be possible to use these funds, thus meeting our reserves policy. Over the next three years we will actively work to increase our unrestricted reserves and we feel confident to continue funding our services. Each year we budget in accordance with strategic goals and plans.

FUTURE PLANS

As we continue to develop our strategic direction for the next three years (2019-2022), our main aim for the future is to plan and aim for growth of our services whilst ensuring we maintain and protect the core aspects of our work with rough sleepers and vulnerable women through our Streetlink model.

Spires' clients' needs are often complex and challenging and increasingly seem to fall outside of statutory services remits, so we have developed partnerships with other organisations and this work will continue to be a cornerstone in our approach in the future.

Spires' collaborative approach has enabled us to achieve positive outcomes for our service users and our intention is to build on these working partnerships allowing us to offer our clients real opportunities to rebuild their lives so they can live positive and independent lives once more.

The on-going challenge for Spires, along with so many charitable organisations, is the constant need to raise sufficient funding to enable the continued provision of our services. With homelessness levels still increasing and public services unable to meet all demands, our work is a vital lifeline for many of our vulnerable clients. The board recognises and wishes to maintain the self-referral and free nature of our service as it is seen by all to be fundamental to Spires' values and its success, and so the securing of funding is integral to achieving this aim. Part of our remit going forward will be to look at how we can diversify our income and secure new revenue streams to ensure we can maintain our vital services.

As part of our wider business development strategy over the next year we will also be looking at how we can use evaluation to learn how to be more effective and to improve the services we provide. We recognise that being able to improve the way in which we can demonstrate the difference we're making to our clients lives will mean we can then put forward to funders and commissioners the case for further growth and new services that can support even more people in need.

STRUCTURE, GOVERNANCE AND MANAGEMENT

Governing document

The charity is controlled by its governing document, a deed of trust, and constitutes a limited company, limited by guarantee, as defined by the Companies Act 2006.

Report of the Trustees
for the year ended 30 September 2018

STRUCTURE, GOVERNANCE AND MANAGEMENT

Review of the year

It has been a year of mixed emotions with our Streetlink project being awarded significant funding from the Big Lottery Reaching Communities fund and our saying goodbye, after eight years, to Lucy Barratt, who had been Chief Executive for the last five years. We also said goodbye to Trustee Janis Wharton, who had been a wonderful support to service delivery staff, and to Chloe Warner, who had worked closely with finance staff in establishing our new accounting system. We wish all three well for in future and thank them for their contributions.

Our Rough Sleeper's Service

The number of people using our rough sleeper space is increasing year on year and we are thankful to our funders, and the many people in the local community who make donations of their time, money, food and clothing to meet our service users basic needs. Staff have worked hard and together with our partners have made referrals for housing, sorted out benefit issues, found training and volunteering opportunities, advocated for and supported many to find a place of security and stability.

Case Study – John – Moving from distress to greater stability and hope.*

When John came to Spires he was in a very low mood, dishevelled and extremely embarrassed about his situation. He had been sleeping rough and initially we gave him a sleeping bag, fresh clothes and some food before one of our support workers sat with him and let him talk, in his own time, about the circumstances that brought him to Spires.

John had originally trained and worked as a baker. Although this remained his first love and primary trade, he told us he had been working in property maintenance for a family-owned south London company for several years, until his contract was suddenly and unexpectedly terminated just after Christmas.

It was the loss of this work that brought John to Spires' door, guided by the local Jobcentre staff who assured him that we would help him make an application for state benefits – something he had never previously done - and help with finding suitable housing. While this was in progress his support worker made a referral to a night shelter. While he waited for a bed space John continued to attend the centre every day for food, a shower and restorative conversation with the staff who, he said; 'are so friendly and really seem to care about me'. In no time he was smiling again, engaging with other service users as well as staff and seemed generally more at ease with himself and his new environment. He acquired a bicycle and was soon riding miles each day in search of work, in between attending the necessary meetings with the DWP and other administrative agencies.

After about two weeks a bed became available in the night shelter, where he remained before being referred to the YMCA. John is now receiving Jobseekers Allowance and in hostel accommodation funded by housing benefit. Nevertheless, he is anxious to return to work as soon as possible and is applying for jobs on a daily basis. He still comes to Spires from time to time (on his bike from Surbiton!) and continues to be enthusiastic about his future.

**name has been changed to protect beneficiary's identity*

Our Streetlink Service

We have seen an increase in the number of street-based sex workers accessing the services of the Indoor Sex Work Project, however, we realise that these are not separate populations. Many women we originally made contact with through outreach on the streets are now also working from their phones, advertising on the internet or working from flats. The majority of these women have multiple, complex support needs including problematic drug use, homelessness, mental health concerns and are experiencing regular, multiple forms of violence. At present of the 30 individuals we are working with regularly, 15 fall into this category and they require ongoing, in depth one-to-one case management. As a result a greater proportion of the overall project team resources are required for these women.

We have maintained regular outreach with sex workers during the year and continue to offer them ongoing support as needed. The new funding from the Big Lottery Fund has helped secure this project for the next three years. We can also report that we have met and exceeded the outcomes relating to our Comic Relief Funding that ends in April 2019.

Included in the Big Lottery award we have been allocated a £10,000 "Building Capabilities" grant that will help Spires identify areas in which we can build our resilience as a business.

Counselling – Wellbeing – Creative Writing

We have developed our counselling service to support some of our most vulnerable service users and have recruited a team of volunteer counsellors. We hope to develop the team further in the year ahead.

The team coordinator has also established a creative writing circle that is enabling women to express themselves in safe and therapeutic space.

Report of the Trustees
for the year ended 30 September 2018

Adult Education

Adult Education is one of the vehicles out of homelessness and provides a real opportunity for many of our service users to engage in meaningful occupation. We provided a range of entry level adult learning classes, including ESOL and IT, and 89.5% of learners achieved their goals for the year. Bearing in mind the challenges faced by many of the people enrolling in the courses, which include homelessness, mental health, substance misuse and learning disability, this was an amazing achievement. Regrettably, we did not achieve our target of 240 new learners for the year and this resulted in a clawback of some of the funding. We will take steps to ensure that we get a full cohort for the next academic year.

Governing Document

Spires is a private charitable company limited by guarantee, having no share capital, governed by its memorandum and articles of association. The liability of each member in the event of a winding up is £10. The charitable company does not use 'Limited' in its name by virtue of section 30 of The Companies Act 2006. The affairs of the company are managed by the Trustees who are obliged to meet at least four times a year for this purpose. The Trustees may number between three and ten.

The post of Trustee

Trustees are recruited through advertising followed by an application and interview. Subsequent appointment is by an ordinary resolution of the Board.

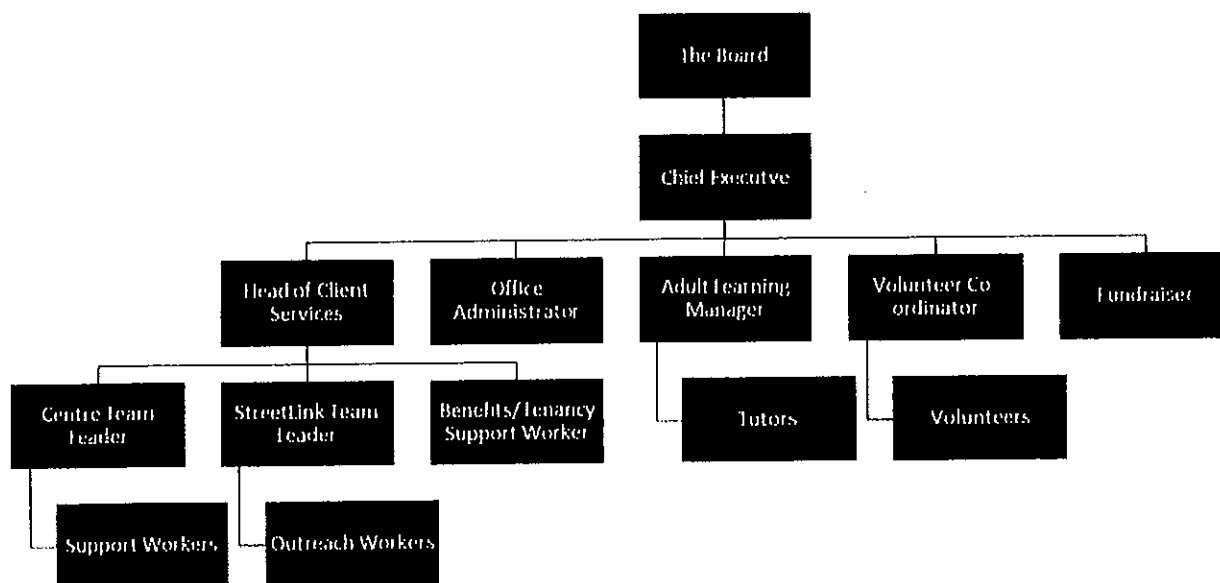
Trustees are subject to periodic retirement and reappointment.

Trustee induction and training

New Trustees visit the Centre to meet staff, volunteers and clients and to understand fully the nature of Spires work. Access to the staff handbook and all policies and procedures relating to governance and delivery of Spires work is essential. Further specific skills training deemed necessary to undertake the role of Trustee may be arranged in conjunction with Spires Chair of Trustees and Spires Chief Executive.

Management and organisation

The Trustees meet every two months to coordinate the general strategy, direction and management of Spires, receiving detailed reports from Spires' Chief Executive and other officers as required. The day-to-day affairs of Spires are delegated to the Chief Executive. The organisation chart is as follows:



THE SPIRES CENTRE (REGISTERED NUMBER: 03785409)

**Report of the Trustees
for the year ended 30 September 2018**

STRUCTURE, GOVERNANCE AND MANAGEMENT

Related parties

Spires is committed to working in partnership with other agencies both statutory and voluntary. These relationships enable Spires's staff to access any additional specialist help our clients need, and prevents duplication of work. Key partnerships include other organisations supporting homeless and vulnerable people, specialist drug and alcohol treatment and support agencies, primary healthcare services, providers of both emergency and permanent accommodation, local authority social care teams and adult education and training partners and providers. Membership and agency link organisations are listed in section 1 of this report.

Risk management

The trustees have assessed the major risks to which the charitable company is exposed and are satisfied that systems are in place to mitigate the exposure to those risks. A full risk register is held at head office and this is fully reviewed annually with priority and new risks identified and reviewed at each trustee meeting.

Spires management and staff team are continuously involved in planning, implementing and reviewing clients' support plans to reflect identified risks, and the on-going employment of safe and effective work practices in line with Spires policies and procedures. Spires' management also ensures that all staff that key work clients are trained to carry out full risk assessments and know when to seek extra support and more specialist internal and external advice.

REFERENCE AND ADMINISTRATIVE DETAILS

Registered Company number

03785409 (England and Wales)

Registered Charity number

1076888

Registered office

8 Tooting Bec Gardens
Streatham
London
SW16 1RB

Trustees

Ms Janis Wharton (Resigned 31st July 2018)
Mr John Clark McKelvie
MR Andrew Campbell
Mrs Louise Eyles
Mr Andrew Johnson
Ms Sherine Krause
Miss Chloe Warner (Resigned 31st July 2018)
Ms Helen Schofield

The respective Incumbents are Trustees/Directors by virtue of their office.

The Directors of the charitable company are Trustees for the purposes of charity law and throughout this report are collectively referred to as Trustees.

Company Secretary

Mrs Lucy Barrett

THE SPIRES CENTRE (REGISTERED NUMBER: 03785409)

**Report of the Trustees
for the year ended 30 September 2018**

REFERENCE AND ADMINISTRATIVE DETAILS

Independent examiner

Tudor John LLP
Chartered Accountants
Nightingale House
46-48 East Street
Epsom
Surrey
KT17 1HQ

Bankers:

National Westminster Bank plc
Streatham Branch
54 Streatham High Road
London
SW16 1XE

Bank of Scotland
600 Gorgie Road
Edinburgh
EH11 3XP and

Barclays Bank
136 Streatham High Road
Streatham
SW16 1BN

Report of the Trustees
for the year ended 30 September 2018

REFERENCE AND ADMINISTRATIVE DETAILS

The Spires Centre is a member of:

Homeless Link
Institute of Fundraising
Lambeth Community Empowerment Network
Lambeth MARAC
Lambeth VAWG Forum (Violence Against Women and Girls)
Lambeth Voluntary Action Council
National Council for Voluntary Organisations (NCVO)
Prostitution Action Group - Lambeth
National Ugly Mugs
Women's Resource Centre

Principal Agency Links:

999 Club - Deptford
Ace of Clubs
Alcohol Recovery Project ARP Choices Project
Alone in London
Battersea Drug & Alcohol Services
Brixton Hill Safer Neighbourhood Panel
Brixton Soup Kitchens
City Road (Intervention Detox)
Clearing House (Pan London)
Community Drugs Project
Community Safety Services
Crime Reduction Initiative (CRI)
Croydon Night Watch
Croydon Reach – Thames Reach
Elevating Lives
Emmaus Lambeth
Equinox
Evolve (Blenheim CDP)
Faith in Action - Merton
Family Learning
First Steps Trust
Foundation 66
Gaia (Refuge)
Glass Door Homeless Charity
Harrison Housing
His Church Charity
Housing for Women
Job Centre Plus
Kairos Community
Kingston University
Lambeth Adult Learning
Lambeth Alcohol Services - Lorraine Hewitt House
Lambeth Community Mental Health Services
Lambeth Housing - Vulnerable Adult Pathway
Lambeth Prostitution Group
Lambeth Safer Streets Team
Lambeth Social Services (Adult & CYPS)
Lambeth Tenancy Services
London Housing Trust (LHT)
London Probation – Stockwell
Mainliners / Addaction (services for drug users)
Martha Jones House – Thames Reach

THE SPIRES CENTRE (REGISTERED NUMBER: 03785409)

**Report of the Trustees
for the year ended 30 September 2018**

REFERENCE AND ADMINISTRATIVE DETAILS

Maudsley AAU
MET Police - Lambeth
MET Police - Lewisham
MET Police - Sexual Offences, Exploitation & Child Abuse Command (SOECAO)
NHS - Three Boroughs Primary Healthcare Team
ODAAT
Open College Network London Region (OCN London)
Open Doors - East London
Prince's Trust
Probation
Rape Crisis
Rights of Women - Legal
Shelter from the Storm
Shrine (Sexual and Reproductive Health Rights, Inclusion and Empowerment)
SNAP Team (Support Needs Assessment & Placement) - Croydon
SOFAR (Ex Services)
South Bank University
South London & Maudsley NHS Trust (SLAM)
St. Georges Hospital GUM Clinic
St Giles Trust
St. Mungo's (Chrysalis Project)
St Leonard's Church
START (Mental Health Services for Rough Sleepers)
STOLL (Ex Services)
Street Link
Terrence Higgins Trust
Thames Reach / Bondway
Thames Reach - SWITCH (Supporting homeless women with multiple needs)
The Beth Centre - Women in Prison
The Challenge Network
The Nehemiah Project
The Pavement
The Passage
The Robes Project
Thrale Almshouses
Trust (working with women involved in sex work)
Ugly Mugs (UKNSWP)
Violence Against Women & Girls Forum & Strategy Group - Lambeth
Volunteer Centre Croydon
Volunteer Centre Lambeth
Volunteer Centre Merton
Volunteer Centre Wandsworth
Wandsworth Drugs Project
Wandsworth Public Health Team
West London Churches (Winter Shelter)
Women in Prison
Wrap up London (Hands on London)

THE SPIRES CENTRE (REGISTERED NUMBER: 03785409)

**Report of the Trustees
for the year ended 30 September 2018**

REFERENCE AND ADMINISTRATIVE DETAILS

Funders: We would like to thank the many people have contributed to our work over the last 12 months. We are particularly grateful to the individuals and organisations that have been substantial funders of The Spires Centre:

Adult Learning Service, London Borough of Lambeth
Anthony Lampard
Arthur Green
Big Lottery Fund
Bishop Thomas Grant School
Church of the English Martyrs
Clutton Brock Charitable Trust
Comic Relief
Emmaus Lambeth and Surrey
Faculty of Health, Social Care and Education
George Benda
Gowling WLG Charitable Trust
Helen Lockhart
Highfields Trust
Holy Trinity & St. Mattias
Jonathon Feroze
Judge Charles Gibson
LHA London
Little Company of Mary Generalate
Liz Robinson
Lloyds Bank Foundation
Marsh Christian Trust
Mazar's Charitable Trust
Men who buy sex
Mr Andrew Campbell
Mr Andrew Lindsay
Mr Chris Hitchings
Mr Colin Johns
Mr Leo Martin
Mrs Sally Byng
Rev Amanda Hodgson
Rontex Ltd
Sian Henderson
South London & Maudsley NHS - 380 Streatham High Rd
South London & Maudsley NHS - Luther King Ward
South London & Maudsley NHS Foundation Trust
St Luke's Church Battersea
St Mary's Parochial Church Council
St. Mary's Church, Merton
Stavros Niarchos Foundation
Streets of London
Streetsmart Action for the Homeless
The Alchemy Foundation
The Alexandra Trust
The Chaucer Foundation
The White Benevolent Fund
Thomas's Clapham

THE SPIRES CENTRE (REGISTERED NUMBER: 03785409)

**Report of the Trustees
for the year ended 30 September 2018**

Thrale Almshouse
White Stuff Foundation
Woodroffe Benton Charitable Trust
Worshipful Company of Basketmakers
Wyndham Charitable Trust

Approved by order of the board of trustees on 11 June '19 and signed on its behalf by:

Sherine Krause

Ms Sherine Krause - Chair

**Independent Examiner's Report to the Trustees of
The Spires Centre (Registered number: 03785409)**

Independent examiner's report to the trustees of The Spires Centre ('the Company')

I report to the charity trustees on my examination of the accounts of the Company for the year ended 30 September 2018.

Responsibilities and basis of report

As the charity's trustees of the Company (and also its directors for the purposes of company law) you are responsible for the preparation of the accounts in accordance with the requirements of the Companies Act 2006 ('the 2006 Act').

Having satisfied myself that the accounts of the Company are not required to be audited under Part 16 of the 2006 Act and are eligible for independent examination, I report in respect of my examination of your charity's accounts as carried out under section 145 of the Charities Act 2011 ('the 2011 Act'). In carrying out my examination I have followed the Directions given by the Charity Commission under section 145(5) (b) of the 2011 Act.

Independent examiner's statement

Since your charity's gross income exceeded £250,000 your examiner must be a member of a listed body. I can confirm that I am qualified to undertake the examination because I am a registered member of ICAEW which is one of the listed bodies

I have completed my examination. I confirm that no matters have come to my attention in connection with the examination giving me cause to believe:

1. accounting records were not kept in respect of the Company as required by section 386 of the 2006 Act; or
2. the accounts do not accord with those records; or
3. the accounts do not comply with the accounting requirements of section 396 of the 2006 Act other than any requirement that the accounts give a true and fair view which is not a matter considered as part of an independent examination; or
4. the accounts have not been prepared in accordance with the methods and principles of the Statement of Recommended Practice for accounting and reporting by charities [applicable to charities preparing their accounts in accordance with the Financial Reporting Standard applicable in the UK and Republic of Ireland (FRS 102)].

I have no concerns and have come across no other matters in connection with the examination to which attention should be drawn in this report in order to enable a proper understanding of the accounts to be reached

Tudor John

Tudor John Chartered Accountants
ICAEW
Tudor John LLP
Chartered Accountants
Nightingale House
46-48 East Street
Epsom
Surrey
KT17 1HQ

Date: 13 Sept 2019

THE SPIRES CENTRE

**Statement of Financial Activities
(Incorporating an Income and Expenditure Account)
for the year ended 30 September 2018**

		Unrestricted funds	Restricted funds	2018 Total funds	2017 Total funds
	Notes	£	£	£	£
INCOME AND ENDOWMENTS FROM					
Donations and legacies	2	185,459	2	185,461	176,763
Charitable activities	5				
Rough Sleeper Service		10,379	105,165	115,544	89,224
Adult Learning Service		-	71,547	71,547	91,833
Tenancy Support		29,753	-	29,753	28,414
Spires Streetlink		1,667	135,975	137,642	159,269
Other		-	-	-	300
Community engagement		144	25,000	25,144	25,000
Other trading activities	3	5,394	8,808	14,202	3,953
Investment income	4	470	-	470	1,933
Total		<u>233,266</u>	<u>346,497</u>	<u>579,763</u>	<u>576,689</u>
EXPENDITURE ON					
Raising funds	6	32,107	-	32,107	32,713
Charitable activities	7				
Rough Sleeper Service		59,512	113,973	173,485	200,696
Adult Learning Service		-	81,822	81,822	78,569
Tenancy Support		45,123	-	45,123	41,986
Spires Streetlink		87,132	135,975	223,107	187,775
Community engagement		<u>8,885</u>	<u>25,001</u>	<u>33,886</u>	<u>30,593</u>
Total		<u>232,759</u>	<u>356,771</u>	<u>589,530</u>	<u>572,332</u>
NET INCOME/(EXPENDITURE)		507	(10,274)	(9,767)	4,357
RECONCILIATION OF FUNDS					
Total funds brought forward		<u>243,301</u>	<u>75,807</u>	<u>319,108</u>	<u>314,750</u>
TOTAL FUNDS CARRIED FORWARD		<u><u>243,808</u></u>	<u><u>65,533</u></u>	<u><u>309,341</u></u>	<u><u>319,107</u></u>

The notes form part of these financial statements

THE SPIRES CENTRE (REGISTERED NUMBER: 03785409)

Balance Sheet
At 30 September 2018

	Not es	Unrestricted funds £	Restricted funds £	Total 2018 funds £	Total 2017 funds £
FIXED ASSETS					
Tangible assets	13	16,878	12,541	29,419	36,519
CURRENT ASSETS					
Debtors	14	60,339	-	60,339	41,747
Cash at bank and in hand		<u>242,384</u>	<u>52,992</u>	<u>295,376</u>	<u>323,138</u>
		302,723	52,992	355,715	364,885
CREDITORS					
Amounts falling due within one year	15	(75,793)	-	(75,793)	(82,296)
NET CURRENT ASSETS		<u>226,930</u>	<u>52,992</u>	<u>279,922</u>	<u>282,589</u>
TOTAL ASSETS LESS CURRENT LIABILITIES		243,808	65,533	309,341	319,108
NET ASSETS		<u>243,808</u>	<u>65,533</u>	<u>309,341</u>	<u>319,108</u>
FUNDS	16				
Unrestricted funds				243,808	243,301
Restricted funds				<u>65,533</u>	<u>75,807</u>
TOTAL FUNDS				<u>309,341</u>	<u>319,108</u>

The notes form part of these financial statements

THE SPIRES CENTRE (REGISTERED NUMBER: 03785409)

**Balance Sheet - continued
At 30 September 2018**

The charitable company is entitled to exemption from audit under Section 477 of the Companies Act 2006 for the year ended 30 September 2018.

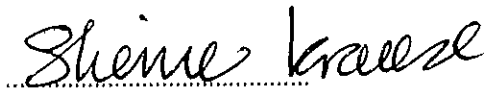
The members have not required the company to obtain an audit of its financial statements for the year ended 30 September 2018 in accordance with Section 476 of the Companies Act 2006.

The trustees acknowledge their responsibilities for

- (a) ensuring that the charitable company keeps accounting records that comply with Sections 386 and 387 of the Companies Act 2006 and
- (b) preparing financial statements which give a true and fair view of the state of affairs of the charitable company as at the end of each financial year and of its surplus or deficit for each financial year in accordance with the requirements of Sections 394 and 395 and which otherwise comply with the requirements of the Companies Act 2006 relating to financial statements, so far as applicable to the charitable company.

These financial statements have been prepared in accordance with the special provisions of Part 15 of the Companies Act 2006 relating to charitable small companies.

The financial statements were approved by the Board of Trustees on 11 June 19..... and were signed on its behalf by:



Ms Sherine Krause - Chair

THE SPIRES CENTRE

Cash Flow Statement
for the year ended 30 September 2018

	Notes	2018 £	2017 £
Cash flows from operating activities:			
Cash generated from operations	1	(28,573)	(52,853)
Interest paid		<u>764</u>	<u>(1,322)</u>
Net cash provided by (used in) operating activities		<u>(27,809)</u>	<u>(54,175)</u>
Cash flows from investing activities:			
Interest received		<u>47</u>	<u>763</u>
Net cash provided by (used in) investing activities		<u>47</u>	<u>763</u>
Change in cash and cash equivalents in the reporting period		(27,762)	(53,412)
Cash and cash equivalents at the beginning of the reporting period		<u>323,138</u>	<u>376,550</u>
Cash and cash equivalents at the end of the reporting period		<u>295,376</u>	<u>323,138</u>

The notes form part of these financial statements

THE SPIRES CENTRE

Notes to the Cash Flow Statement
for the year ended 30 September 2018

1. RECONCILIATION OF NET INCOME/(EXPENDITURE) TO NET CASH FLOW FROM OPERATING ACTIVITIES

	2018	2017
	£	£
Net income/(expenditure) for the reporting period (as per the statement of financial activities)	(9,767)	4,357
Adjustments for:		
Depreciation charges	7,100	9,326
Loss on disposal of fixed assets	-	990
Interest received	(47)	(763)
Interest paid	(764)	1,322
Increase in debtors	(18,592)	(23,675)
Decrease in creditors	<u>(6,503)</u>	<u>(44,410)</u>
Net cash provided by (used in) operating activities	<u>(28,573)</u>	<u>(52,853)</u>

THE SPIRES CENTRE

Notes to the Financial Statements for the year ended 30 September 2018

1. ACCOUNTING POLICIES

BASIS OF PREPARING THE FINANCIAL STATEMENTS

The financial statements of the charitable company, which is a public benefit entity under FRS 102, have been prepared in accordance with the Charities SORP (FRS 102) 'Accounting and Reporting by Charities: Statement of Recommended Practice applicable to charities preparing their accounts in accordance with the Financial Reporting Standard applicable in the UK and Republic of Ireland (FRS 102) (effective 1 January 2015)', Financial Reporting Standard 102 'The Financial Reporting Standard applicable in the UK and Republic of Ireland' and the Companies Act 2006. The financial statements have been prepared under the historical cost convention.

INCOME

All income is recognised in the Statement of Financial Activities once the charity has entitlement to the funds, it is probable that the income will be received and the amount can be measured reliably.

EXPENDITURE

Liabilities are recognised as expenditure as soon as there is a legal or constructive obligation committing the charity to that expenditure, it is probable that a transfer of economic benefits will be required in settlement and the amount of the obligation can be measured reliably. Expenditure is accounted for on an accruals basis and has been classified under headings that aggregate all cost related to the category. Where costs cannot be directly attributed to particular headings they have been allocated to activities on a basis consistent with the use of resources.

TANGIBLE FIXED ASSETS

Depreciation is provided at the following annual rates in order to write off the cost less estimated residual value of each asset over its estimated useful life.

Improvements to property	- 10% on cost
Fixtures and fittings	- 25% on reducing balance
Motor vehicles	- 25% on reducing balance

Assets costing less than £500 are not capitalised but expense through the SoFA.

TAXATION

As a registered charity, the company is not liable to income tax on its various forms of income on the basis that it is applied for charitable purposes. Income tax is recoverable on gift and donations and is accounted for as it becomes receivable.

FUND ACCOUNTING

Unrestricted funds can be used in accordance with the charitable objectives at the discretion of the trustees.

Restricted funds can only be used for particular restricted purposes within the objects of the charity. Restrictions arise when specified by the donor or when funds are raised for particular restricted purposes.

Restricted incoming resources which relate to fixed assets expenditure are transferred to unrestricted funds following their utilisation to the extent that such expenditure relates to the furtherance of direct charitable (unrestricted) activities. Depreciation is thereafter accounted for as an expense within unrestricted funds.

Accumulated funds represent aggregate retained amounts, both restricted and unrestricted, which finance the company's operation. They comprise investment in fixed assets and working capital.

Further explanation of the nature and purpose of each fund is included in the notes to the financial statements.

HIRE PURCHASE AND LEASING COMMITMENTS

Rentals paid under operating leases are charged to the Statement of Financial Activities on a straight line basis over the period of the lease.

THE SPIRES CENTRE

**Notes to the Financial Statements - continued
for the year ended 30 September 2018**

1. ACCOUNTING POLICIES - continued

PENSION COSTS AND OTHER POST-RETIREMENT BENEFITS

The charitable company operates a defined contribution pension scheme. Contributions payable to the charitable company's pension scheme are charged to the Statement of Financial Activities in the period to which they relate.

2. DONATIONS AND LEGACIES

	2018	2017
	£	£
Donation	181,072	172,092
Donations received under gift aid	<u>4,389</u>	<u>4,671</u>
	<u>185,461</u>	<u>176,763</u>

3. OTHER TRADING ACTIVITIES

	2018	2017
	£	£
Fundraising Trusts	-	3,713
Fundraising Events	<u>14,202</u>	<u>240</u>
	<u>14,202</u>	<u>3,953</u>

4. INVESTMENT INCOME

	2018	2017
	£	£
Rents received	423	1,170
Deposit account interest	<u>47</u>	<u>763</u>
	<u>470</u>	<u>1,933</u>

5. INCOME FROM CHARITABLE ACTIVITIES

		2018	2017
	Activity	£	£
Donations	Rough Sleeper Service	10,379	17,140
Grants	Rough Sleeper Service	105,165	72,084
Donations	Adult Learning Service	-	3,672
Grants	Adult Learning Service	71,547	88,161
Consultancy	Tenancy Support	29,753	28,414
Donations	Spires Streetlink	-	700
Consultancy	Spires Streetlink	1,667	3,067
Grants	Spires Streetlink	135,975	155,502
Consultancy	Other	-	300
Donations	Community engagement	144	-
Grants	Community engagement	<u>25,000</u>	<u>25,000</u>
		<u>379,630</u>	<u>394,040</u>

THE SPIRES CENTRE

**Notes to the Financial Statements - continued
for the year ended 30 September 2018**

5. INCOME FROM CHARITABLE ACTIVITIES - continued

Grants received, included in the above, are as follows:

	2018	2017
	£	£
Alexandra Trust	1,250	-
Big Lottery	88,844	99,491
Comic Relief	47,131	49,761
London Borough of Lambeth	71,547	88,161
Lloyds TSB	25,000	25,000
Streetsmart	9,167	12,500
Thrale Almshouse and Relief	4,750	-
Lillian Nash	-	6,250
29th May 1961 Charitable Trust	3,333	5,417
Basekmakers Charity	5,000	2,917
Chaucer Foundation	14,165	-
White Stuff Foundation	-	5,000
Stavros Niarchos Foundation	45,000	41,250
Mrs Smith & Mount Trust	-	5,000
LHA London	10,000	-
Streets of London	10,000	-
Gowling WLG Charitable Trust	1,000	-
Highlands Trust	1,500	-
	<u>337,687</u>	<u>340,747</u>

6. RAISING FUNDS

Raising donations and legacies

	2018	2017
	£	£
Staff costs	29,622	31,273
Fundraising	<u>2,485</u>	<u>1,440</u>
	<u>32,107</u>	<u>32,713</u>

7. CHARITABLE ACTIVITIES COSTS

	Direct costs	Support costs (See note 8)	Totals
	£	£	£
Rough Sleeper Service	90,450	83,035	173,485
Adult Learning Service	55,201	26,621	81,822
Tenancy Support	29,261	15,862	45,123
Spires Streetlink	142,646	80,461	223,107
Community engagement	<u>18,024</u>	<u>15,862</u>	<u>33,886</u>
	<u>335,582</u>	<u>221,841</u>	<u>557,423</u>

THE SPIRES CENTRE

**Notes to the Financial Statements - continued
for the year ended 30 September 2018**

8. SUPPORT COSTS

	Management	Governance	Totals
	£	costs £	£
Rough Sleeper Service	79,152	3,883	83,035
Adult Learning Service	25,376	1,245	26,621
Tenancy Support	15,120	742	15,862
Spires Streetlink	76,698	3,763	80,461
Community engagement	<u>15,120</u>	<u>742</u>	<u>15,862</u>
	<u>211,466</u>	<u>11,817</u>	<u>221,841</u>

9. NET INCOME/(EXPENDITURE)

Net income/(expenditure) is stated after charging/(crediting):

	2018	2017
	£	£
Depreciation - owned assets	7,100	9,326
Other operating leases	25,705	20,311
Deficit on disposal of fixed asset	<u>-</u>	<u>990</u>

10. TRUSTEES' REMUNERATION AND BENEFITS

There were no trustees' remuneration or other benefits for the year ended 30 September 2018 nor for the year ended 30 September 2017.

TRUSTEES' EXPENSES

There were no trustees' expenses paid for the year ended 30 September 2018 nor for the year ended 30 September 2017.

11. STAFF COSTS

	2018	2017
	£	£
Wages and salaries	360,316	362,713
Social security costs	31,117	31,974
Other pension costs	<u>13,624</u>	<u>9,908</u>
	<u>405,057</u>	<u>404,595</u>

No member of staff received remuneration in excess of £60,000.

The average number of employees during the year was 14 (2017 14)

THE SPIRES CENTRE

Notes to the Financial Statements - continued
for the year ended 30 September 2018

12. COMPARATIVES FOR THE STATEMENT OF FINANCIAL ACTIVITIES

	Unrestricted funds £	Restricted funds £	Total funds £
INCOME AND ENDOWMENTS FROM			
Donations and legacies	176,762	1	176,763
Charitable activities			
Rough Sleeper Service	-	89,224	89,224
Adult Learning Service	-	91,833	91,833
Tenancy Support	28,414	-	28,414
Spires Streetlink	2,800	156,469	159,269
Other	300	-	300
Community engagement	-	25,000	25,000
Other trading activities	3,240	713	3,953
Investment income	<u>1,933</u>	<u>-</u>	<u>1,933</u>
Total	213,449	363,240	576,689
EXPENDITURE ON			
Raising funds	32,713	-	32,713
Charitable activities			
Rough Sleeper Service	108,038	92,658	200,696
Adult Learning Service	(1)	78,570	78,569
Tenancy Support	41,986	-	41,986
Spires Streetlink	31,307	156,468	187,775
Community engagement	<u>4,880</u>	<u>25,713</u>	<u>30,593</u>
Total	218,923	353,409	572,332
NET INCOME/(EXPENDITURE)	(5,474)	9,831	4,357
RECONCILIATION OF FUNDS			
Total funds brought forward	<u>248,776</u>	<u>65,974</u>	<u>314,750</u>
TOTAL FUNDS CARRIED FORWARD	<u>243,302</u>	<u>75,805</u>	<u>319,107</u>

THE SPIRES CENTRE

**Notes to the Financial Statements - continued
for the year ended 30 September 2018**

13. TANGIBLE FIXED ASSETS

	Improvements to property £	Fixtures and fittings £	Motor vehicles £	Totals £
COST				
At 1 October 2017 and 30 September 2018	<u>43,487</u>	<u>54,200</u>	<u>14,282</u>	<u>111,969</u>
DEPRECIATION				
At 1 October 2017	22,314	44,126	9,010	75,450
Charge for year	<u>3,263</u>	<u>2,519</u>	<u>1,318</u>	<u>7,100</u>
At 30 September 2018	<u>25,577</u>	<u>46,645</u>	<u>10,328</u>	<u>82,550</u>
NET BOOK VALUE				
At 30 September 2018	<u>17,910</u>	<u>7,555</u>	<u>3,954</u>	<u>29,419</u>
At 30 September 2017	<u>21,173</u>	<u>10,074</u>	<u>5,272</u>	<u>36,519</u>

14. DEBTORS: AMOUNTS FALLING DUE WITHIN ONE YEAR

	2018 £	2017 £
Trade debtors	34,584	26,417
Other debtors	14,199	7,102
Prepayments	<u>11,556</u>	<u>8,228</u>
	<u>60,339</u>	<u>41,747</u>

15. CREDITORS: AMOUNTS FALLING DUE WITHIN ONE YEAR

	2018 £	2017 £
Trade creditors	8,709	16,268
Social security and other taxes	11,403	9,062
Accruals and Deferred Income	<u>55,681</u>	<u>56,968</u>
	<u>75,793</u>	<u>82,298</u>

THE SPIRES CENTRE

Notes to the Financial Statements - continued
for the year ended 30 September 2018

16. MOVEMENT IN FUNDS

	At 1.10.17 £	Net movement in funds £	At 30.9.18 £
Unrestricted funds			
General fund	88,361	507	88,868
Special Projects fund	<u>154,940</u>	-	<u>154,940</u>
	243,301	507	243,808
Restricted funds			
Direct Charitable Activities	12,541	-	12,541
Emergency Support Fund	50,000	-	50,000
London Borough of Lambeth	<u>13,266</u>	<u>(10,274)</u>	<u>2,992</u>
	75,807	(10,274)	65,533
	<u>319,108</u>	<u>(9,767)</u>	<u>309,341</u>
TOTAL FUNDS			

Net movement in funds, included in the above are as follows:

	Incoming resources £	Resources expended £	Movement in funds £
Unrestricted funds			
General fund	233,266	(232,759)	507
Restricted funds			
Rough SLeeperS Space	8,808	(8,808)	-
29th May 1961 Trust	3,333	(3,333)	-
Big Lottery Reaching Communities	88,844	(88,844)	-
Comic Relief	47,131	(47,131)	-
Lloyds Bank Foundation for England and Wales	25,001	(25,001)	-
London Borough of Lambeth	71,548	(81,822)	(10,274)
Stavros Niarchos Foundation	45,000	(45,000)	-
Streetsmart Action for the Homeless	9,167	(9,167)	-
The Worshipful Company of Basket Makers	5,000	(5,000)	-
LHA London	10,000	(10,000)	-
Streets of London	10,000	(10,000)	-
The Chaucer Foundation	14,165	(14,165)	-
Thrale	4,750	(4,750)	-
The Alexandra Trust	1,250	(1,250)	-
Gowling WLG Charitable Trust	1,000	(1,000)	-
Highlands Trust	<u>1,500</u>	<u>(1,500)</u>	-
	346,497	(356,771)	(10,274)
	<u>579,763</u>	<u>(589,530)</u>	<u>(9,767)</u>
TOTAL FUNDS			

THE SPIRES CENTRE

Notes to the Financial Statements - continued
for the year ended 30 September 2018

16. MOVEMENT IN FUNDS - continued

Comparatives for movement in funds

	At 1.10.16 £	Net movement in funds £	At 30.9.17 £
Unrestricted Funds			
General fund	93,837	(5,476)	88,361
Special Projects fund	<u>154,940</u>	<u>-</u>	<u>154,940</u>
	248,777	(5,476)	243,301
Restricted Funds			
Direct Charitable Activities	15,974	(3,433)	12,541
Emergency Support Fund	50,000	-	50,000
London Borough of Lambeth	<u>-</u>	<u>13,266</u>	<u>13,266</u>
	65,974	9,833	75,807
	<u>314,751</u>	<u>4,357</u>	<u>319,108</u>
TOTAL FUNDS			

Comparative net movement in funds, included in the above are as follows:

	Incoming resources £	Resources expended £	Movement in funds £
Unrestricted funds			
General fund	213,449	(218,925)	(5,476)
Restricted funds			
Direct Charitable Activities	21,779	(25,212)	(3,433)
29th May 1961 Trust	5,417	(5,417)	-
Big Lottery Awards for All	713	(713)	-
Big Lottery Reaching Communities	99,490	(99,490)	-
Comic Relief	49,761	(49,761)	-
Lloyds Bank Foundation for England and Wales	25,000	(25,000)	-
London Borough of Lambeth	88,163	(74,897)	13,266
Mrs Alice Lilian Nash Will Trust	6,250	(6,250)	-
Mrs Smith & Mount Trust	5,000	(5,000)	-
Stavros Niarchos Foundation	41,250	(41,250)	-
Streetsmart Action for the Homeless	12,500	(12,500)	-
The White Benevolent Fund	5,000	(5,000)	-
The Worshipful Company of Basket Makers	<u>2,917</u>	<u>(2,917)</u>	<u>-</u>
	363,240	(353,407)	9,833
	<u>576,689</u>	<u>(572,332)</u>	<u>4,357</u>
TOTAL FUNDS			

THE SPIRES CENTRE

**Notes to the Financial Statements - continued
for the year ended 30 September 2018**

16. MOVEMENT IN FUNDS - continued

A current year 12 months and prior year 12 months combined position is as follows:

	At 1.10.16 £	Net movement in funds £	At 30.9.18 £
Unrestricted funds			
General fund	93,837	(4,969)	88,868
Special Projects fund	154,940	-	154,940
Restricted funds			
Direct Charitable Activities	15,974	(3,433)	12,541
Emergency Support Fund	50,000	-	50,000
London Borough of Lambeth	<u>-</u>	<u>2,992</u>	<u>2,992</u>
	<u>65,974</u>	<u>(441)</u>	<u>65,533</u>
TOTAL FUNDS	<u>314,750</u>	<u>(5,410)</u>	<u>309,341</u>

THE SPIRES CENTRE

Notes to the Financial Statements - continued for the year ended 30 September 2018

16. MOVEMENT IN FUNDS - continued

A current year 12 months and prior year 12 months combined net movement in funds, included in the above are as follows:

	Incoming resources £	Resources expended £	Movement in funds £
Unrestricted funds			
General fund	446,715	(451,684)	(4,969)
Restricted funds			
Rough Sleepers Space	8,808	(8,808)	-
Direct Charitable Activities	21,779	(25,212)	(3,433)
29th May 1961 Trust	8,750	(8,750)	-
Big Lottery Awards for All	713	(713)	-
Big Lottery Reaching Communities	188,334	(188,334)	-
Comic Relief	96,892	(96,892)	-
Lloyds Bank Foundation for England and Wales	50,001	(50,001)	-
London Borough of Lambeth	159,711	(156,719)	2,992
Mrs Alice Lilian Nash Will Trust	6,250	(6,250)	-
Mrs Smith & Mount Trust	5,000	(5,000)	-
Stavros Niarchos Foundation	86,250	(86,250)	-
Streetsmart Action for the Homeless	21,667	(21,667)	-
The White Benevolent Fund	5,000	(5,000)	-
The Worshipful Company of Basket Makers	7,917	(7,917)	-
LHA London	10,000	(10,000)	-
Streets of London	10,000	(10,000)	-
The Chaucer Foundation	14,165	(14,165)	-
Thrale	4,750	(4,750)	-
The Alexandra Trust	1,250	(1,250)	-
Gowling WLG Charitable Trust	1,000	(1,000)	-
Highlands Trust	1,500	(1,500)	-
	<u>709,737</u>	<u>(710,178)</u>	<u>(441)</u>
TOTAL FUNDS	<u>1,156,452</u>	<u>(1,161,862)</u>	<u>(5,410)</u>

Direct Fund - this fund represents funding received directly in respect of performing the Charitable activities. The value at the end of the year represents the net book value of assets specifically funded for use in these Charitable activities.

Fundraiser - this is money received towards the cost of employing a fundraiser to help generate funds and enable the Charity to improve its financial position.

Emergency Support Fund - this money has been given to the Charity to cover any expenses which may arise in the event that the Charity was forced to close. It is not available for use as day to day funding of the activities.

Special Projects Fund - this money has been provided to support the aims and objects of Spires, money can be withdrawn from the fund only after all trustees have been consulted and a majority have indicated agreement to the expenditure. Trustees have agreed that as far as possible the money should be used for special projects or in exceptional circumstances to support a shortfall in the annual revenue of Spires. In order to preserve the special projects nature of the fund any revenue payments required should be kept to a minimum and in any case must not exceed £50,000 in any one year and only be made available in the most serious of circumstances.

THE SPIRES CENTRE

**Notes to the Financial Statements - continued
for the year ended 30 September 2018**

17. RELATED PARTY DISCLOSURES

There were no related party transactions requiring disclosure during the year.

18. DEFERRED INCOME

Incoming resources deferred and accrued at 30th September 2018 are made up of the following:

	2018	2017
Accrued income b/fwd at 1st October 2017	(4,063)	(6,867)
Deferred income b/fwd at 1st October 2017	45,167	110,067
Received in the year	368,826	331,944
Accrued income c/fwd at 30th September 2018	7,617	4,063
Deferred income c/fwd at 30th September 2018	<u>(37,917)</u>	<u>(45,167)</u>
Released in the year	<u>379,630</u>	<u>394,040</u>

THE SPIRES CENTRE

**Detailed Statement of Financial Activities
for the year ended 30 September 2018**

	2018 £	2017 £
INCOME AND ENDOWMENTS		
Donations and legacies		
Donation	181,072	172,092
Donations received under gift aid	<u>4,389</u>	<u>4,671</u>
	185,461	176,763
Other trading activities		
Fundraising Trusts	-	3,713
Fundraising Events	<u>14,202</u>	<u>240</u>
	14,202	3,953
Investment income		
Rents received	423	1,170
Deposit account interest	<u>47</u>	<u>763</u>
	470	1,933
Charitable activities		
Donations	10,523	21,512
Consultancy	31,420	31,781
Grants	<u>337,687</u>	<u>340,747</u>
	<u>379,630</u>	<u>394,040</u>
Total incoming resources	579,763	576,689
EXPENDITURE		
Raising donations and legacies		
Wages	25,967	27,764
Social security	2,633	2,802
Pensions	1,022	707
Fundraising	<u>2,485</u>	<u>1,440</u>
	32,107	32,713
Charitable activities		
Wages	303,272	339,726
Social security	29,596	26,323
Pensions	13,396	9,856
Catering	4,724	6,224
Tutors and other services	15,508	18,607
Temporary staff	38,067	7,375
Vehicle running costs	8,596	4,894
Carried forward	413,159	413,005

This page does not form part of the statutory financial statements

THE SPIRES CENTRE

**Detailed Statement of Financial Activities
for the year ended 30 September 2018**

	2018	2017
	£	£
Charitable activities		
Brought forward	413,159	413,005
Promotional material	<u>50</u>	<u>371</u>
	413,209	413,376
Support costs		
Management		
Other operating leases	25,705	20,311
Rates and water	138	2,119
Insurance	13,214	12,927
Light and heat	7,542	7,973
Telephone	10,333	10,972
Postage and stationery	10,655	11,089
Sundries	562	1,308
Cleaning	16,629	15,949
Repairs and renewals	22,636	18,827
Training and recruitment	13,374	4,411
Staff Travel	4,509	1,823
Depreciation of tangible and heritage assets	7,100	9,327
Loss on sale of tangible fixed assets	<u>-</u>	<u>990</u>
	132,397	118,026
Governance costs		
Accountancy and legal fees	12,581	6,895
Bank interest	<u>(764)</u>	<u>1,322</u>
	<u>11,817</u>	<u>8,217</u>
Total resources expended	589,530	572,332
Net (expenditure)/income	<u>(9,767)</u>	<u>4,357</u>

This page does not form part of the statutory financial statements