



Report & Financial Statements

 2018



The Friends 1935-2018

The Object of the Friends is
“to relieve patients ... of the Hospital
who are sick, convalescent, disabled,
handicapped, infirm ...
and generally to support the
charitable work of the ...
Hospital.”

Report & Financial Statements

For year ended 31 December 2018

Contents

Governance, Administration & Objectives	4
Chairman's Report	5
Helping & Caring	6
Events & Fundraising	10
Subscriptions & Donations	11
Giving	12
Financial Summary	13
Reserves Policy and Trustees' Responsibilities	14
Auditor's Report	15
Statement of Financial Activities	17
Balance Sheet at 31 December	18
Notes to the Financial Statements	19



THE FRIENDS IN NUMBERS

20,000

Hours of their time are volunteered by the Friends at Chelsea each year. They make 25,000 sandwiches for patients and serve more than 40,000 drinks.

180

Volunteers work in 11 different departments throughout the hospital.

£155,000

Was spent in 2018 for the benefit of patients and staff by the Friends, Chelsea.

£1.1m +

Has been donated by the Friends at Chelsea during the past 5 years.

£18,000

was the largest amount spent on a single item by the Friends at Chelsea in 2018 - for a Bronchoscope trainer (Head & Neck unit).



Governance, Administration & Objectives



June Torrance, President

This is the Trustees' Report and Financial statements for the year ended 31 December 2018. It is presented in accordance with current statutory requirements, the requirements of the Charity's governing document, the provisions of the Charities Act 2011 and the Statement of Recommended Practice applicable to the Charities preparing their accounts in accordance with the Financial Reporting Standard applicable in the UK and the Republic of Ireland (FRS 102) - (Charities SORP (FRS 102)).

Trustees:

Lady Rose	Trustee (retired 1 March 2018)
Mrs J. Bellamy	Honorary Treasurer & Trustee
Mrs W. de Capell Brooke	Trustee
Mrs S. Franklin	Trustee (appointed 10 May 2018)
Mrs J. Gulbenkian	Trustee (resigned 18 January 2019)
Mrs A. Pardoe MBE	Honorary President & Trustee
Mrs M. Stacey	Chairman & Trustee
Mrs. June Torrance	President

Charity No:

222613

Principal Office:

The Royal Marsden, Chelsea
203 Fulham Road
London, SW3 6JJ

Auditors:

Haines Watts
3rd Floor Aissela
46 High Street
Esher
Surrey, KT10 9QY

Bank:

HSBC Bank plc
95 Gloucester Road
London, SW7 4SX

Website:

www.formc.uk

Email:

friends.chelsea@rmh.nhs.uk

The Objectives of Friends of The Royal Marsden, Chelsea

- To supplement the service provided by The Royal Marsden Hospital for the health, welfare and comfort of the patients...by the provision of facilities, buildings and equipment which may be required for the treatment of such patients, or for the efficient running of the Hospital.
- To provide, or to assist in the provision of, amenities in The Royal Marsden Hospital for patients and staff, including the provision and running of hospital shops, canteens, libraries, flower services, the establishment of clubs, health and recreation centres, hostels and rest and convalescent homes for the use and benefit of such persons.

Chairman's Report



Marie Stacey, Chairman

Welcome,

2018 was a very busy year for the Friends and I cannot believe that the time has come for me to write the Chairman's Report already.

Helping and Caring

We currently have around 180 volunteers who come in either on a weekly or bi-weekly basis. Challenges this year have included registration of all our volunteers for the Disbarring and Checking Service (DBS) and also the completion of a Volunteer Workbook which is now mandatory. We also had to prepare and ensure compliance with the General Data and Processing Regulation (GDPR), which came into effect at the end of May.

Giving

Our 2018 events calendar this year was very busy and we were fortunate to secure a three year sponsorship from Rathbone Investment Management. Events included: Dog Tails in the Park, a dog walk in Kensington Gardens; afternoon tea at Dunsborough Park, where our volunteers baked cakes and made sandwiches for the event; Churchill War Rooms, where 100 guests attended a private evening with drinks (Pol Roger Champagne, thanks to an anonymous donor) and canapés; our annual Quiz Night (as popular and competitive as ever); The Grand Sale at The Horticultural Halls in November and, in December, The Festival of Carols which we share annually with the Brompton and Chelsea & Westminster hospitals. On top of all this, the Young Friends go from strength to strength with a successful ball in March, which resulted in a full page feature in Tatler. They also had another successful fundraiser later in the year.

In terms of financial support the Friends have funded, amongst other things, the purchase of a Bronchoscope Trainer for Head and Neck Surgery, two electric operating tables for Day Surgery, ECG machines for both Radiotherapy and Outpatients, a High Frequency Jet Ventilator for Anaesthesiology, two blood pressure monitor carts and a training microscope for plastic surgery. The Outpatients' Cafe underwent a complete refurbishment over the Easter period which was funded by us following the donation of the kitchen units by Howdens (Fulham). In addition, every inpatient received a gift on Christmas Day from the Friends, given to them by a volunteer who went in specially on Christmas morning.

There are significant outstanding commitments, approved in 2018, that have not yet been fulfilled including, amongst other things, refurbishment of the visitor rooms in CCU, Blood Sample Labelling Printers for Outpatients and a Speech and Language Therapy Endoscopic Evaluation System.

I do not have the space to let you know of all that we do here at the Friends. It is only possible as a result of the contribution from our volunteers, the members of the Committee and our Trustees, Patrons and Sponsors.

Thank you.



Helping & Caring



THE FRIENDS' CAFE Raised £31,000

The Friends Cafe (also known as the Outpatients Cafe) on the first floor of Wallace Wing, underwent a major refurbishment in 2018 thanks to Howdens (Fulham) who generously donated the kitchen units. The Friends funded the refurbishment costs of around £32,000 to include new floors, equipment and counters.

The refurbished Cafe provides a welcoming environment in the busy Outpatients Department for patients and visitors to enjoy a cup of tea and a snack either before or after their appointment.

Many of our volunteers have the same shift in the Cafe either every week or every other week and build up a rapport with patients on regular visits to Outpatients which is valued by both volunteers as well as by patients and staff.

All profits from the Cafe go towards the funding of equipment, services and amenities for the hospital.



THE FRIENDS' SHOP & SHOP TROLLEY Raised £19,500

The Shop is an important resource within the hospital and the only retail outlet for both patients and staff other than the Shop Trolley (see below).

The Shop is run by a dedicated team of volunteers who order the stock and ensure the smooth running together with a team of volunteers who work in the shop every weekday between 10.00 am and 3.45pm.

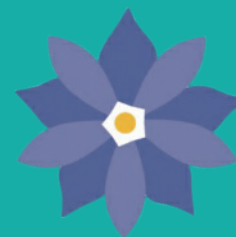
The Shop sells cards, small handpicked seasonal gifts, essential toiletries, newspapers, confectionary and healthy snacks.

Our Shop Manager works closely with the hospital to ensure that the range of snacks offered within the shop satisfies the criteria laid down by the NHS for healthy eating for both patients and staff visiting the shop.

All profits from the Shop go towards the funding of equipment, services and amenities for the hospital.

“In 2018, the Cafe, Shop & Shop Trolley made a net profit of £50,000 which was used to fund equipment services & amenities for the hospital.”

Helping & Caring



“The Trolley services, Flowers and Garden all add to the patient experience at The Royal Marsden, Chelsea.”

THE SHOP TROLLEY

The Shop Trolley carries a wide selection of items from the Shop including daily newspapers, confectionary, healthy snacks and gifts. Teams of two volunteers take the trolley around the wards in the hospital every morning and afternoon Monday and Thursday and Friday mornings.

It brings the Shop to the patients twice a day as well as providing an opportunity for volunteers to meet and chat with the patients. Our volunteers will also go to the Shop and buy an item for a patient if it is not available on the Shop Trolley. The funds raised by the Shop Trolley go towards buying medical equipment, services and amenities for the hospital.

THE HOBBIES TROLLEY

The Hobbies Trolley is run by the Friends for the benefit of patients on the wards. This trolley is taken round by a single volunteer, four afternoons a week.

The Hobbies Trolley stocks games, puzzles, books and similar items. It provides a welcome diversion for patients who can chat to our Trolley volunteers.

Many hospitals no longer allow or encourage fresh flowers on patients bedside tables but at The Royal Marsden there is a rota of around fourteen volunteers who, three or four days a week, look after the patients fresh flowers by changing the water, cleaning the vases and freshening or rearranging the displays.

We would like to thank OKA for their continued support by way of their generous donation of arrangements of seasonal faux flowers in the reception areas of the hospital.

GARDEN & TERRACES

The Friends plant and maintain garden areas which are enjoyed by patients, visitors and staff. In 2018, they were awarded second place in the Small Gardens London Hospitals Garden Competition from The London Garden Society at The Guildhall, London. In addition, the Friends maintain the seasonal pots, planters and containers around the hospital and outside the Critical Care Unit. They also look after the pick your own herbs planter for staff. All terraces and planters are maintained without the use of natural or artificial pesticides.



Helping & Caring



HORDER WARD

Every weekday lunchtime and evening and on Saturday lunchtimes our volunteers help the catering assistant serve lunchtime and evening meals.

As with many of our services, our volunteers offer their time to chat to the patients and their families.

They also keep the Day Room tidy and ensure that the toys and books and play area for children, donated by the Friends, are kept in good condition for children who visit patients on the ward.

MAGAZINES & BOOKS

Volunteers, supporters and patients donate good quality, second hand paperback books to the Friends for resale at a nominal sum in the Outpatients Cafe, the Shop and the Medical Day Unit.

Conde Nast Publications provide quality magazines to us free of charge for distribution within the various reception areas within the hospital and we are very grateful to them for their continued support.



MEET & GREET

The Meet & Greet service operates from every weekday between 10am and 3pm.

Meet & Greet volunteers know the hospital intimately and offer a navigation service to make the whole process less stressful for patients and visitors. The service also operates during busy times from Main Reception as well as from Wallace Wing.

TEA TROLLEY

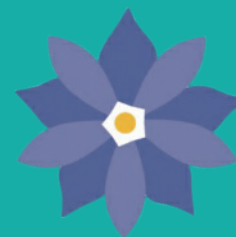
Meet and Greet volunteers offer a complimentary tea, coffee and biscuits trolley in the Medical Day Unit every weekday morning. The service is available to patients and also their carers and is much appreciated as it is not always possible for them to get to the Cafe or Shop.

OUTPATIENT SUPPORT

The Outpatients Department is one of the busiest departments in the hospital and volunteers are on hand between 10.30am and 3.30pm to help patients and to supply hot drinks, from the Cafe, to the clinical staff.

“ Every day, except Sunday, Volunteers give of their time for which they expect nothing in return. ”

Helping & Caring



RECRUITMENT

We have a wonderful team of volunteers and are always looking to recruit new ones. You can be a Friend without becoming a volunteer by payment of an annual subscription.

All volunteers are DBS checked and must complete a Workbook prepared by the hospital. This ensures all our volunteers are compliant in terms of safe guarding patients, governance, fire safety and other related matters.

WEBSITE & NEWSLETTER

The Friends website, www.formc.uk, and newsletter ensure that volunteers are kept up to date with news and activities.

FESTIVAL OF CAROLS

This is a popular event held annually, for over 25 years, at Holy Trinity, Sloane Street, organised in conjunction with The Royal Brompton and Chelsea & Westminster hospitals. Guest speakers included Earl Cadogan, Greg Hands MP and Charles Alexander, Chairman of The Royal Marsden NHS Foundation Trust.

CELEBRATE A LIFE

The Friends support The Royal Marsden's 'Celebrate a Life' Christmas service. For the past three years the event has been sponsored by Event Factor, who very kindly donate mulled wine and mince pies which are distributed by us to all attendees.

CHRISTMAS DAY

In 2018, every inpatient received a Lulu Guinness tote bag, card, cracker, DVD and tin of Christmas biscuits. These were given out by a volunteer on Christmas morning. A volunteer pianist also plays in the hospital on Christmas Day.

“ Every year, volunteers give some 20,000 hours to the hospital as well as raise funds for the benefit of all in the hospital. ”

PUBLIC BENEFIT

The activities described on pages 6-9 clearly benefit The Royal Marsden hospital and its patients. The Trustees have also had regard to the Charity Commission's guidance on public benefits.



Events & Fundraising



Rathbones

Look forward

RATHBONE INVESTMENT MANAGEMENT SPONSORSHIP

We are delighted to be a beneficiary charity of Rathbone Investment Management.

2018 was the first full year of a three year sponsorship agreement whereby selected events are underwritten by Rathbone Investment Management enabling all profits from ticket sales to go directly to the Friends.

Christopher McCarthy, Event Manager said:

"We are delighted to be able to support and work with the Friends and look forward to continuing our collaboration in 2019."

DOG TAILS IN THE PARK

Raised £3,000

Sponsored by Rathbone
Investment Management

Dog Tails in the Park was the first charity dog walk held in Kensington Gardens. The event was suggested by our much loved Committee member, the late Hon Mrs Jacaranda "Jac" Craig, and was both popular and poignant. All dogs received a goody bag upon completion and it was a great day for dogs and owners alike.

CHURCHILL WAR ROOMS

Raised £16,500

Sponsored by Rathbone
Investment Management

Our major fundraiser in 2018 was a private evening at Churchill War Rooms in October. We were fortunate to have an additional anonymous donor for the Pol Roger Champagne served at the reception. It was a sell out event and every attendee left with a gift bag.

QUIZ NIGHT

Raised £3,500

Our ever popular and highly competitive annual Quiz Night in October was organised by our Hon President Mrs A Pardo MBE. As ever, there was a waiting list for tables.

YOUNG FRIENDS

Raised £15,500

The Young Friends had a very good year by holding a successful Ball in Hammersmith which resulted in a full page feature in the Tatler magazine. They also organised a very successful Match/Unmatched social event at Embargo in Fulham.

OTHER EVENTS

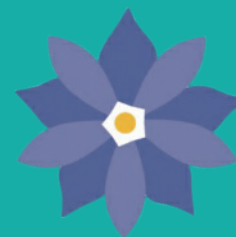
Raised £6,000

In September we were fortunate to once again be invited to provide tea and cake at an annual Open Day at Dunsborough Park in Surrey. Volunteers baked or sponsored all the cakes and sandwiches with an enthusiastic team of volunteers to help on the day.

We participated in the Christmas Grand Sale at The Horticultural Halls in November selling Lulu bags, Christmas cards and raffle tickets.

We also held our annual Festival of Carols, together with Chelsea and Westminster and The Royal Brompton hospitals, in December.

Subscriptions & Donations



SUBSCRIPTIONS, DONATIONS & LEGACIES

Raised £135,500

Subscriptions, Donations and Legacies continue to form the backbone of our fundraising.

In order to become a volunteer at the hospital it is necessary to first become a Friend. Some Friends choose not to volunteer but it is the combined effort of both Friends, and Friends who volunteer, that we are able to continue with our work at the hospital. Their annual subscriptions really do make a difference.

COLLECTION TINS

Raised £12,500

The collection tins are placed both inside the hospital and in local retail outlets with the consent of the owner.

CAMPBELL-PATERSON TRUST

Raised £23,500

Since 1979 the Friends of The Royal Marsden, Chelsea have benefited from income generated by the late Mrs Campbell-Paterson's Will Trust.

FUTURE PLANS

Our major 2019 event, the biennial Summer Drinks Party takes place on 15th May at the Chelsea Gardener and will be sponsored by Rathbone Investment Management.

Once again we will be providing tea and cakes at Dunsborough Park in 2019 and plans are underway for Quiz Night in October as well as the Festival of Carols in December.

The Young Friends are planning an event for late 2019 with details yet to be announced.

We also have other events under active consideration which are at an early planning stage.

It is a challenging climate to raise funds and also provide volunteers on a regular basis to the hospital.

Both volunteers and the hospital are supportive of our activities and our fundraising plans are designed to ensure that we can continue to fund equipment and services for the hospital for the benefit of all its patients, their families and staff.

“ Fundraising is part, but not all, but nevertheless an important part of what the Friends do for the hospital. ”



Giving

Where the money goes

	£	£
HOSPITAL EQUIPMENT & SUPPLIES		
Head & Neck Surgery- Bronchoscope Trainer	18,000	
Radiology- High Frequency Jet Ventilator	15,664	
Day Surgery- 2 Electric Operating Tables	15,562	
Anaesthesiology- High Frequency Jet Ventilator	14,839	
Endoscopy- Breath Test Machine	14,499	
Outpatients- 2 Nasoendoscopes	9,996	
Surgical Unit- ILP Lifter	8,075	
Anaesthesiology- AVL Video Laryngoscope	5,300	
Outpatients- 2 ECG Machines	4,590	
Surgical Unit- LED Headlights	4,160	
Clinical Assessment Unit- 4 Patient Monitors	4,601	
Radiotherapy- Patient Hoist	3,700	
RDAC/Day Surgery/Horder Ward- 3 Patient Monitors	3,451	
Radiotherapy- ECG Machine	2,295	
Outpatients- 2 Blood Pressure Monitor Carts	2,058	
Daycare Unit- Pressure Relieving Cushions	1,508	
Plastic Surgery- Training Microscope	1,278	
Speech & Language Therapy- Portable Suction Unit	933	
Anaesthesiology- Cannulation Training Device	721	
Pain Management Team- 15 Tens Machines	222	
		131,452
HOSPITAL AMENITIES		
Arts Forum	5,000	
Markus Ward Enhancements	2,279	
PET/CT- Uptake Rooms Enhancements	1,118	
Facilities- Maintenance of Roof Terraces and Gardens	924	
Brachytherapy - Treatment Room Enhancements	626	
Piano Costs	396	
Relatives Viewing Room Enhancements	388	
Horder Ward - Family Room Enhancements	278	
Fresh Flowers	201	
Hospital Christmas Decorations	110	
PALS/Bereavement Office Enhancements	87	
		11,407
PATIENT AMENITIES		
RDAC/Radiotherapy Coffees	7,682	
Christmas Presents for Patients & Staff	982	
Patient Wellbeing- Aromatherapy Supplies	893	
Therapy- Darzi Patient Experience Project	818	
Patient Wellbeing- Refreshments for Patient Wellbeing Events	487	
Physical/Occupational Therapy Supplies	476	
Miscellaneous Costs	397	
		11,735
TOTAL 2018 SPEND		154,594

The object of the Friends is "to relieve patients of the Hospital who are sick, convalescent, disabled, handicapped, infirm and generally to support the charitable work of the ... Hospital."

To achieve this, our role is twofold. We provide volunteers to help throughout the Hospital where requested and we also fundraise to fund the purchase of equipment and the provision of services.

At each Committee meeting, a senior member of the clinical staff of The Royal Marsden, Chelsea is in attendance and it is they who provide a prepared wish list of items requested by departments within the hospital.

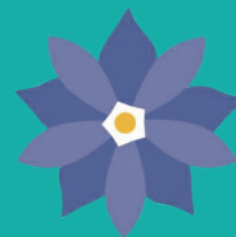
The list states the amount requested together with a short description of the item or service to be provided. Should the Committee decide more information is required then a decision will be deferred until the following meeting.

There are eight Committee Meetings each year, which take place in February, March, May, June, September, October, November and December. The meetings are held at the hospital at the beginning of each month and all Committee members are expected to attend.

By the end of 2018, the Friends had funded, or committed to, the purchase of equipment and/or services to the hospital in the sum of some £226,000.

This breaks down, in percentage terms to: 78% equipment, 12% hospital amenities, 10% patient amenities.

Financial Summary



In 2018, before it paid for any amenities to benefit the hospital and its patients, the net income of Friends of The Royal Marsden, Chelsea was **£246,032** (2017: £193,955).

ACTIVITIES	2018 £ '000	2017 £ '000	Percentage change year over year
Donations and Subscriptions	86	79	10%
Net income: Legacies and Will Trusts	85	28	204%
Net income: Café	31	32	-4%
Net income: Shop and Shop Trolley	19	18	6%
Net income: Fundraising Events	33	59	-44%
Sponsorship	14	0	100%
Net income: Miscellaneous	4	1	300%
Investment Income	2	1	100%
Less: Salary and Support costs	(28)	(24)	17%
TOTAL	246	194	27%

The table shows that:

- Income from Donations and Subscriptions has increased 10%.
- Income from Legacies and Will Trusts has increased significantly. This was due to a large legacy.
- Net income from core activities decreased overall by 11%:
The Café (-4%), The Shop & Shop Trolley (+6%), Events (-44%) and Sponsorship (+100%).
- Salary and Support Costs have increased by 17%.
- Net Income, before Charitable Expenditure, increased by 27%.

Financial Position at the Year End

The Friends of The Royal Marsden is in a strong financial position at year end, with an increase in Accumulated Funds from £478,176 at 31 December 2017 to £564,758, at 31 December 2018. Cash and Deposits at the year end are £541,938 an increase from £455,710 at the end of 2017. This solid financial position will enable the Friends to continue to fulfil its objectives as stated on page 4.

Reserves Policy

Generally, the Restricted and Unrestricted funds of Friends of The Royal Marsden, Chelsea are available to be spent as the Friends decide, the only exceptions being that:

- The Restricted Funds: The funds provided by the Campbell-Paterson Will Trust must be spent on purchases of medical equipment;
- The Friends have chosen to ring-fence Mrs Rosemary Green's 2013 donation (£56,000) as it was Mrs Green's wish that the funds be used to pay for items that improve the patients' environment. These funds have a remaining balance of £28,600.

After taking the above into account, the Friends of The Royal Marsden, Chelsea does not hold any reserves. However, it does aim to maintain a level of funds, £250,000 at present, that it considers necessary to protect current activities in a way that enables the Charity to meet its responsibilities and to ensure that it continues to operate on a 'Going Concern' basis without risk. The Charity does not consider that it has sufficient funds to initiate any sizeable long term projects. If, however, such a project was to be presented, and deemed suitable, the Friends of The Royal Marsden, Chelsea, would consider amending its reserve policy to fulfill such a commitment.

Structure, Governance and Management

The Friends of The Royal Marsden, Chelsea are governed by the Objects and Rules as amended and altered by the members of the Friends of The Royal Marsden at the Extraordinary General Meeting of the Friends held on 29 November 2007 and effective from 1 January 2008. The Objects and Rules have been amended and re-registered by the Charities Commission on the 6th November 2015. Trustees are nominated by the Committee of the Friends and shall comprise the President of the Friends and a minimum of three members nominated by the Committee for appointment at the Annual General Meeting. The Trustees have delegated the conduct and management of the affairs of the Friends to the Committee in accordance with the Objects and Rules.

Remuneration to Charity Trustees

The Charity paid no remuneration or other benefits in kind to a Charity Trustee.

Relationships with other Charities

The Royal Marsden NHS Foundation Trust has its own fundraising charity which concentrates on major capital projects and the support of research funds. The Trustees of Friends of The Royal Marsden, Chelsea, consider that the income generating activities of their charity, as operated by the dedication of its volunteers, in providing highly visible services, are complementary to the work of the main hospital charity. A significant number of volunteers are recruited from former patients and their families and friends. The Friends of The Royal Marsden, Chelsea meet from time to time with the Friends of other large London hospitals to discuss matters of common interest and to share ideas for providing services and fundraising.

Trustees Responsibilities in Relation to the Financial Statements

The Trustees are responsible for preparing the Trustees' Annual Report and the Financial Statements in accordance with applicable law and United Kingdom Accounting Standards (United Kingdom Generally Accepted Accounting Practice).

The law applicable to charities in England & Wales requires the Trustees to prepare financial statements for each financial year which give a true and fair view of the state of affairs of the Charity and of the incoming resources and application of resources of the Charity for that period. In preparing these financial statements, the Trustees are required to:

- Select suitable accounting policies and then apply them consistently;
- Observe the methods and principles in the Charities SORP 2015 (FRS 102);
- Make judgements and estimates that are reasonable and prudent;
- State whether applicable accounting standards have been followed, subject to any material departures disclosed and explained in the Financial Statements;
- Prepare the Financial Statements on the going concern basis unless it is inappropriate to presume that the Charity will continue in operation.

The Trustees are responsible for keeping proper accounting records that disclose with reasonable accuracy at any time the financial position of the Charity and enable them to ensure that the Financial Statements comply with the Charities Act 2011, the Charity (Accounts and Reports) Regulations 2008 and the provisions of the Trust Deed. They are also responsible for safeguarding the assets of the Charity and hence for taking reasonable steps for the prevention and detection of fraud and other irregularities.

The Trustees are responsible for the maintenance and integrity of the charity and financial information included on the Charity's website. Legislation in the United Kingdom governing the preparation and dissemination of Financial Statements may differ from legislation in other jurisdictions.



Marie Stacey, Chairman, On behalf of the Trustees 8th April 2019

Independent Auditor's Report to the Trustees of Friends of The Royal Marsden, Chelsea

Opinion

We have audited the financial statements of Friends of the Royal Marsden, Chelsea for the year ended 31 December 2018 which comprise of the Statement of Financial Activities, the Balance Sheet, and notes to the financial statements, including a summary of significant accounting policies. The financial reporting framework that has been applied in their preparation is applicable law and United Kingdom Accounting Standards, including Financial Reporting Standard 102 *The Financial Reporting Standard applicable in the UK and Republic of Ireland* (United Kingdom Generally Accepted Accounting Practice).

In our opinion the financial statements:

- give a true and fair view of the state of the charity's affairs as at 31 December 2018, and of its incoming resources and application of resources, for the year then ended;
- have been properly prepared in accordance with United Kingdom Generally Accepted Accounting Practice; and
- have been prepared in accordance with the requirements of the Charities Act 2011.

Basis for opinion

We conducted our audit in accordance with International Standards on Auditing (UK) (ISAs (UK)) and applicable law. Our responsibilities under those standards are further described in the Auditor's responsibilities for the audit of the financial statements section of our report. We are independent of the charity in accordance with the ethical requirements that are relevant to our audit of the financial statements in the UK, including the FRC's Ethical Standard, and we have fulfilled our other ethical responsibilities in accordance with these requirements. We believe that the audit evidence we have obtained is sufficient and appropriate to provide a basis for our opinion.

Conclusions relating to going concern

We have nothing to report in respect of the following matters in relation to which the ISAs (UK) require us to report to you where:

- *the trustees' use of the going concern basis of accounting in the preparation of the financial statements is not appropriate; or*
- *the trustees have not disclosed in the financial statements any identified material uncertainties that may cast significant doubt about the charity's ability to continue to adopt the going concern basis of accounting for a period of at least twelve months from the date when the financial statements are authorised for issue.*

Other information

The trustees are responsible for the other information. The other information comprises the information included in the trustees' annual report, other than the financial statements and our auditor's report thereon. Our opinion on the financial statements does not cover the other information and, except to the extent otherwise explicitly stated in our report, we do not express any form of assurance conclusion thereon.

In connection with our audit of the financial statements, our responsibility is to read the other information and, in doing so, consider whether the other information is materially inconsistent with the financial statements or our knowledge obtained in the audit or otherwise appears to be materially misstated. If we identify such material inconsistencies or apparent material misstatements, we are required to determine whether there is a material misstatement in the financial statements or a material misstatement of the other information. If, based on the work we have performed, we conclude that there is a material misstatement of this other information, we are required to report that fact.

We have nothing to report in this regard.

Matters on which we are required to report by exception

We have nothing to report in respect of the following matters in relation to which the Charities (Accounts and Reports) Regulations 2008 require us to report to you if, in our opinion:

- the information given in the financial statements is inconsistent in any material respect with the trustees' report; or
- sufficient accounting records have not been kept; or
- the financial statements are not in agreement with the accounting records; or
- we have not received all the information and explanations we require for our audit.

Independent Auditor's Report to the Trustees of Friends of The Royal Marsden, Chelsea

Responsibilities of trustees

As explained more fully in the trustees' responsibilities statement set out on page 14, the trustees are responsible for the preparation of financial statements which give a true and fair view, and for such internal control as the trustees determine is necessary to enable the preparation of financial statements that are free from material misstatement, whether due to fraud or error.

In preparing the financial statements, the trustees are responsible for assessing the charity's ability to continue as a going concern, disclosing, as applicable, matters related to going concern and using the going concern basis of accounting unless the trustees either intend to liquidate the charity or to cease operations, or have no realistic alternative but to do so.

Auditor's responsibilities for the audit of the financial statements

We have been appointed as auditor under section 145 of the Charities Act 2011 and report in accordance with regulations made under section 154 of that Act.

Our objectives are to obtain reasonable assurance about whether the financial statements as a whole are free from material misstatement, whether due to fraud or error, and to issue an auditor's report that includes our opinion. Reasonable assurance is a high level of assurance but is not a guarantee that an audit conducted in accordance with ISAs (UK) will always detect a material misstatement when it exists. Misstatements can arise from fraud or error and are considered material if, individually or in the aggregate, they could reasonably be expected to influence the economic decisions of users taken on the basis of these financial statements.

A further description of our responsibilities for the audit of the financial statements is located on the Financial Reporting Council's website at: www.frc.org.uk/auditorsresponsibilities. This description forms part of our auditor's report.

Use of our report

This report is made solely to the charity's trustees, as a body, in accordance with Part 4 of the Charities (Accounts and Reports) Regulations 2008. Our audit work has been undertaken so that we might state to the charity's trustees those matters we are required to state to them in an auditor's report and for no other purpose. To the fullest extent permitted by law, we do not accept or assume responsibility to anyone other than the charity and the charity's trustees as a body, for our audit work, for this report, or for the opinions we have formed.

Jane Wills FCA MA
Senior Statutory Auditor
For and on behalf of Haines Watts Kingston LLP
Chartered Accountants
3rd Floor Aissela
46 High Street
Esher
Surrey
KT10 9QY

Signed: 

Date: 16th April, 2019

Statement of Financial Activities for the Year Ended 31 December

Statement of Financial Activities for the Year Ended 31 December 2018

	Note	Unrestricted Funds 2018 £	Restricted Funds 2018 £	Total Funds 2018 £	Total Funds 2017 £
INCOME and ENDOWMENTS					
INCOME FROM					
Donations and Legacies	2	148,173	30,399	178,572	114,598
Charitable Activities					
Refreshment Bars, Shop and Fundraising	2	205,731	-	205,731	212,643
Other Trading Activities	2	13,694	-	13,694	-
Investments	2	1,818	93	1,911	1,386
TOTAL INCOME and ENDOWMENTS		369,416	30,492	399,908	328,627
EXPENDITURE ON					
Trading and Fundraising Costs	3	147,011	6,865	153,876	134,672
Charitable Activities	3	141,450	18,000	159,450	192,426
TOTAL RESOURCES EXPENDED		288,461	24,865	313,326	327,098
NET MOVEMENT IN FUNDS		80,955	5,627	86,582	1,529
RECONCILIATION OF FUNDS					
TOTAL FUNDS BROUGHT FORWARD AT 1 JANUARY 2018		421,384	56,792	478,176	476,647
TOTAL FUNDS CARRIED FORWARD AT 31 DECEMBER 2018		502,339	62,419	564,758	478,176

The Statement of Financial Activity includes all gains and losses recognised in the year.

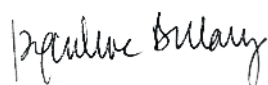
The notes on pages 19-23 form part of these Financial Statements.

Balance Sheet at at 31 December

	Notes	Unrestricted Funds 2018 £	Restricted Funds 2018 £	Total Funds 2018 £	Total Funds 2017 £
FIXED ASSETS					
Tangible Fixed Assets	6	38,111	-	38,111	2,635
Total Fixed Assets		38,111	-	38,111	2,635
CURRENT ASSETS					
Stocks		6,434	-	6,434	9,372
Debtors and Prepayments	7	14,017	36,746	50,763	49,825
Short Term Deposits		327,176	11,676	338,852	337,038
Cash at Bank and in hand		174,975	28,111	203,086	118,672
Net Current Assets		522,602	76,533	599,135	514,907
LIABILITIES					
Creditors: amounts falling due within one year	8	58,374	14,114	72,488	39,366
NET ASSETS		502,339	62,419	564,758	478,176
REPRESENTED BY:					
Restricted and Unrestricted Funds		502,339	62,419	564,758	478,176
ACCUMULATED FUNDS AT 31 DECEMBER 2018		502,339	62,419	564,758	478,176

The notes on pages 19-23 form part of these Financial Statements.

The Financial Statements were approved by the Trustees on 8th April, 2019 and signed on their behalf by:



Mrs J. Bellamy
Trustee



Mrs M. Stacey
Trustee

Notes to the Financial Statements for the Year Ended 31 December

1. Accounting Policies

The principal accounting policies adopted, judgements and key sources of estimation uncertainty in the preparation of the Financial Statements are as follows:

1.1 Basis of Preparation

The Financial Statements have been prepared in accordance with Accounting and Reporting by Charities: Statement of Recommended Practice applicable to charities preparing their accounts in accordance with the Financial Reporting Standard applicable in the UK and Republic of Ireland (FRS 102) (effective 1 January 2015) - (Charities SORP (FRS 102)), the Financial Reporting Standard applicable in the UK and Republic of Ireland (FRS 102), and the Charities Act.

Friends of The Royal Marsden, Chelsea meets the definition of a public benefit entity under FRS 102. Assets and liabilities are initially recognised at historical cost or transaction value unless otherwise stated in the relevant accounting policy note(s).

The Charity has applied Update Bulletin 1 as published on 2 February 2016 and does not include a cash flow statement on the grounds that it is applying FRS 102 Section 1A.

1.2 Fund Accounting

Unrestricted Funds are funds that are available for use at the discretion of the Trustees to advance the general objectives of the Charity and that have not been designated for other purposes.

There is one Restricted Fund, the WL Campbell-Paterson Will Trust, under which the Friends of The Royal Marsden, Chelsea are required to use all income from the Trust to provide medical equipment to The Royal Marsden NHS Foundation Trust. However, with the consent of the Charity Commissioners, the Friends of The Royal Marsden, Chelsea have agreed that Mrs Barbara Marriott, the only daughter of the deceased, should receive, during her lifetime, one quarter of the net income received from the WL Campbell-Paterson Will Trust by the Friends of The Royal Marsden, Chelsea. Also ring-fenced but still held in unrestricted funds is £28,600, which is the amount remaining of the £56,000 donation Mrs Rosemary Green made in 2013. These funds are earmarked for spending that will directly benefit the well-being of the patients.

1.3 Accounting Policies

INCOMING RESOURCES: All incoming resources are included in the Statement of Financial Activities when the Friends of The Royal Marsden, Chelsea are entitled to the income and the amount can be measured with sufficient reliability. Legacies are included when the Friends are advised by the personal representative of an estate that payment will be made or property transferred and the amount involved can be quantified.

Where incoming resources have related expenditure, as with fundraising, the incoming resources and related expenditure are reported gross in the Statement of Financial Activities.

Donations are only included in the Statement of Financial Activities when the Friends of The Royal Marsden, Chelsea have unconditional entitlement to the resources.

Incoming resources from tax reclaims are included in the Statement of Financial Activities at the same time as the gift to which they relate.

Donated services and facilities are only included in incoming resources, with an equivalent amount in resources expended, where the benefit to the Charity is reasonably quantifiable, measurable and material. The value placed on these resources is the estimated value to the Charity of the service or facility received.

The value of any voluntary help received is not included in the accounts but is described in the Trustees' Annual Report.

Investment income is included in the accounts when receivable.

RESOURCES EXPENDED: All expenditure is accounted for on an accrual basis and included under expense categories that aggregate costs for allocation to activities. Where costs cannot be directly attributed to particular activities, they have been allocated on a basis consistent with the use of the resources.

VALUE ADDED TAX: Income and Expenditure are shown net of recoverable VAT.

ASSETS: Tangible fixed assets are capitalised if they can be used for more than one year and cost more than £500. They are stated at cost less depreciation. Depreciation is provided at rates calculated to write off the cost of fixed assets, less their estimated residual value, over their expected useful lives on the following basis: Café equipment - 25% straight line over four years; Café refurbishment - 10% straight line over ten years. Stocks are valued at the lower of cost or market value.

FINANCIAL INSTRUMENTS: Financial assets and financial liabilities are recognised in the balance sheet when the charity becomes a party to the contractual provisions of the instrument. Trade and other debtors and creditors are classified as basic financial instruments and measured at initial recognition at transaction price. Cash and cash equivalents are classified as basic financial instruments and comprise cash in hand and at bank. Financial liabilities are classified in accordance with the substance of the contractual arrangements entered into and the definitions of a financial liability.

Notes to the Financial Statements for the Year Ended 31 December

	Unrestricted Funds 2018 £	Restricted Funds 2018 £	Total Funds 2018 £	Unrestricted Funds 2017 £	Restricted Funds 2017 £	Total Funds 2017 £
2. INCOME FROM DONATIONS and LEGACIES						
Subscriptions	32,102	-	32,102	27,366	-	27,366
Donations	54,202	-	54,202	51,312	-	51,312
Legacies	61,869	-	61,869	2,059	-	2,059
WL Campbell-Paterson Will Trust	-	38,255	38,255	-	42,151	42,151
less 25% to Mrs B Marriott	-	(7,856)	(7,856)	-	(8,290)	(8,290)
TOTAL DONATIONS AND LEGACIES	148,173	30,399	178,572	80,737	33,861	114,598
OTHER TRADING ACTIVITIES						
Friends Café	83,580	-	83,580	77,327	-	77,327
Friends Shop & Trolley	57,862	-	57,862	53,328	-	53,328
Churchill War Rooms	19,657	-	19,657	-	-	-
Young Friends Ball	22,309	-	22,309	-	-	-
Dogtails in the Park	3,026	-	3,026	-	-	-
Young Friends Matching Event	3,659	-	3,659	-	-	-
Grand Sale	2,163	-	2,163	-	-	-
Summer Drinks Party	-	-	-	42,299	-	42,299
Ride London	-	-	-	16,346	-	16,346
Marathon Income	-	-	-	4,929	-	4,929
Carol Concert	2,580	-	2,580	2,840	-	2,840
Quiz Evening	3,546	-	3,546	5,870	-	5,870
Dunsborough Park Outing	1,511	-	1,511	1,809	-	1,809
Lulu Guinness Bags	3,192	-	3,192	4,058	-	4,058
Hobbies Trolley	919	-	919	1,156	-	1,156
Miscellaneous Income	1,630	-	1,630	2,585	-	2,585
Easyfundraising	97	-	97	96	-	96
TOTAL INCOME FROM CHARITABLE ACTIVITIES	205,731	-	205,731	212,643	-	212,643
OTHER TRADING ACTIVITIES						
Sponsorship	13,694	-	13,694	-	-	-
TOTAL OTHER TRADING ACTIVITIES	13,694	-	13,694	-	-	-
INCOME from INVESTMENTS	1,818	93	1,911	1,345	41	1,386

Notes to the Financial Statements for the Year Ended 31 December

	Unrestricted Funds 2018 £	Restricted Funds 2018 £	Total Funds 2018 £	Unrestricted Funds 2017 £	Restricted Funds 2017 £	Total Funds 2017 £
3. TRADING AND FUNDRAISING COSTS						
Friends Café	52,652	-	52,652	45,753	-	45,753
Friends Shop & Trolley	38,537	-	38,537	35,677	-	35,677
Salary & Support Costs *	22,841	-	22,841	21,512	-	21,512
Portfolio Fees	-	6,782	6,782	-	7,178	7,178
Churchill War Rooms	14,400	-	14,400	-	-	-
Young Friends Ball	9,608	-	9,608	-	-	-
Dogtails in the Park	2,177	-	2,177	-	-	-
Young Friends Matching Event	695	-	695	-	-	-
Grand Sale	79	-	79	-	-	-
Summer Drinks Party	-	-	-	15,914	-	15,914
Ride London	-	-	-	617	-	617
Marathon	-	-	-	420	-	420
Carol Concert	115	-	115	-	-	-
Dunsborough Park Outing	169	-	169	374	-	374
Lulu Guinness Bags	1,297	-	1,297	1,502	-	1,502
Miscellaneous	2,476	83	2,559	2,009	775	2,785
Input VAT Recovered	(3,696)	-	(3,696)	-	-	2,785
Marketing	5,661	-	5,661	2,941	-	2,941
TOTAL TRADING AND FUNDRAISING COSTS	147,011	6,865	153,876	126,719	7,953	134,672

CHARITABLE ACTIVITIES

AMENITIES AND EQUIPMENT PROVIDED

Head&Neck Surgery- Bronchoscope Trainer	-	18,000	18,000			
Radiology- High Frequency Jet Ventilator	15,664	-	15,664			
Day Surgery- 2 Electric Operating Tables	15,562	-	15,562			
Anaesthesiology- High Frequency Jet Ventilator	14,839	-	14,839			
Endoscopy- Breath Test Machine	14,499	-	14,499			
Outpatients- 2 Nasoendoscopes	9,996	-	9,996			
Surgical Unit- ILP Lifter	8,075	-	8,075			
Anaesthesiology- AVL Video Laryngoscope	5,300	-	5,300			
Outpatients- 2 ECG Machines	4,590	-	4,590			
Surgical Unit- LED Headlights	4,160	-	4,160			
Clinical Assessment Unit- Patient Monitors x 4	4,601	-	4,601			
Radiotherapy- Patient Hoist	3,700	-	3,700			
RDAC/Day Surgery/Horder Ward- 3 Patient Monitors	3,451	-	3,451			
Radiotherapy- ECG Machine	2,295	-	2,295			
Outpatients- 2 Blood Pressure Monitor Carts	2,058	-	2,058			
Plastic Surgery- Training Microscope	1,278	-	1,278			
Speech&Language Therapy- Portable Suction Unit	933	-	933			
Anaesthesiology- Cannulation Training Device	721	-	721			
Arts Forum	5,000	-	5,000			
Markus Ward Enhancements	2,279	-	2,279			
PET/CT- Uptake Rooms Enhancements	1,118	-	1,118			
Facilities- Maintenance of Roof Terraces and Gardens **	924	-	924			
Brachytherapy- Treatment Room Enhancements	626	-	626			
Piano Costs **	396	-	396			
Relatives Reviewing Room Enhancements	388	-	388			
Horder Ward- Family Room Furbishment	278	-	278			
Fresh Flowers	201	-	201			
Hospital Christmas Decorations	110	-	110			
PALS/Bereavement Office Enhancements	87	-	87			
RDAC/Radiotherapy Support	7,682	-	7,682			
Daycare Unit- Pressure Relieving Cushions	1,508	-	1,508			
Christmas & Presents for Patients & Staff	982	-	982			
Patient Wellbeing- Aromatherapy Supplies	893	-	893			
Therapy- Darzi Patient Experience Project	818	-	818			
Patient Wellbeing- Refreshments for Patient Wellbeing Events	487	-	487			
Physical/Occupational Therapy Supplies	476	-	476			
Miscellaneous Costs	397	-	397			
Pain Management Team- 15 Tens Machines	222	-	222			

TOTAL AMENITIES AND EQUIPMENT PROVIDED	136,594	18,000	154,594	159,041	28,500	187,541
---	----------------	---------------	----------------	----------------	---------------	----------------

GOVERNANCE COSTS

AGM costs	581	-	581	635	-	635
Audit costs	4,275	-	4,275	4,250	-	4,250
TOTAL GOVERNANCE COSTS	4,856	-	4,856	4,885	-	4,885

TOTAL CHARITABLE ACTIVITIES	141,450	18,000	159,450	163,926	28,500	192,426
------------------------------------	----------------	---------------	----------------	----------------	---------------	----------------

* Included in Support Costs is £850 payable to the auditors in relation to other financial services provided during the year.

** Ringfenced from the Rosemary Green Fund

Notes to the Financial Statements for the Year Ended 31 December

4. STAFF COSTS

	2018 £	2017 £
Staff Costs were as follows:		
Salary	18,100	17,860
Employers Pension Costs	401	98
Total Staff Costs	18,501	17,958

The average number of employees during the year was two (2017- two).

5. TRANSACTIONS WITH TRUSTEES

During the year, no Trustee received any remuneration (2017- none).

During the year, no Trustee received any benefits in kind (2017- none).

During the year, no Trustee expenses were reimbursed or paid by the charity (2017- none).

6. TANGIBLE FIXED ASSETS

	Café Equipment 2018 £
COST	
Balance brought forward	14,924
Additions during the year	40,563
Disposals during the year	(7,531)
Balance carried forward	47,956
ACCUMULATED DEPRECIATION	
Balance brought forward	12,289
Charge during the year	5,087
Disposals during the year	(7,531)
Balance carried forward	9,845
NET BOOK VALUE AS AT 31 DECEMBER 2018	38,111
NET BOOK VALUE AS AT 1 JANUARY 2018	2,635

7. DEBTORS

	Unrestricted Funds 2018 £	Restricted Funds 2018 £	Total Funds 2018 £	Total Funds 2017 £
Trade Debtors	5,531	-	5,531	1,256
Prepayments	1,365	-	1,365	2,673
Other Debtors	7,121	36,746	43,867	45,896
Total	14,017	36,746	50,763	49,825

Notes to the Financial Statements for the Year Ended 31 December

8. CREDITORS

	Unrestricted Funds 2018 £	Restricted Funds 2018 £	Total Funds 2018 £	Total Funds 2017 £
Trade Creditors	3,092	-	3,092	6,678
Accruals	46,398	-	46,398	3,983
Other Creditors	8,884	14,114	22,998	28,705
Total	58,374	14,114	72,488	39,366

9. CHARITABLE COMMITMENTS

At 31 December 2018, the Friends of the Royal Marsden, Chelsea agreed to fund the following items for the hospital:

	£
Speech & Language Therapy- Endoscopic Evaluation System	29,375
Outpatients- Blood Sampling Labelling Printers	14,727
CCU Visitor Rooms- Refurbishment	12,500
RDAC/Radiotherapy- Complementary Hot Drinks	8,000
Horder Ward- Enhancements for Family Room	1,965
Therapy- Darzi Patient Experience Project	1,362
Refreshments for Well-being Events	900
Various items for Complimentary Therapies	900
Roof Terraces- Maintenance*	925
Piano- Maintenance*	500
TOTAL OUTSTANDING COMMITMENTS AT 31 DECEMBER 2018	71,154

* Money donated by the Rosemary Green Fund

10. OPERATING LEASES

Total future minimum lease payments under non-cancellable operating leases fall due as follows:

	2018 £	2017 £
Within one year	444	444
Between one and 5 years	-	-
More than five years	-	-
TOTAL OPERATING LEASES	444	444

Total operating lease expenditure included in the Statement of Financial Activities is £444 (2017: £444).

11. DONATED SERVICES

The Friends of The Royal Marsden, Chelsea received various free services from the hospital which, although theoretically possible, would be difficult to value, and therefore this is not considered to be worthwhile. These donated services consist of:

- Space for a small shop, shop stock, a small café, a small office and storage;
- Payment on postage of outgoing mail;
- Two computers, both of which are linked to the hospital network; two printers and, as necessary, computer service support.

12. RELATED PARTIES

Included in Income and Endowments is £1,367 (2017: £3,660) donated by Trustees during the year.

The Friends 1935-2018

In recognition, of all those volunteers who give their loyalty and support to The Royal Marsden, Chelsea. Thank you.

Helping, Caring,
Giving



Friends of The Royal Marsden, Chelsea
203 Fulham Road
London
SW3 6JJ
020 7352 3875
friends.chelsea@rmh.nhs.uk
www.formc.uk

Designed & Produced by volunteers at Friends of The Royal Marsden, Chelsea