



**The Parochial Church Council of the Ecclesiastical Parish
of
St Luke with St Bartholomew**

Reading Reg. Charity No. 1158694

**Annual Parochial Church Meeting
14th April 2019**

**Agenda
Minutes of 2018 Meeting
Parish Reports
Parish Accounts**



THE ANNUAL PAROCHIAL CHURCH MEETING 2018

12 noon Sunday 14th April 2019, Parish Hall

AGENDA

Meeting of Parishioners for the Choice of Churchwardens

(Anyone on the electoral roll of the church, OR resident in the parish may vote in this meeting)

1. Election of Churchwardens

Annual Parochial Church Meeting

(Only those on the electoral roll of the parish may vote in this meeting.

Others may ask questions and join in discussion at the discretion of the Chairman)

1. Apologies for absence

2. Minutes of the 2018 APCM (see attached papers)

3. Elections of PCC Officers and Ordinary Members

- i. Election of PCC members
- ii. Appoint Sidesmen
- iii. Appoint independent examiner if necessary

4. Outline of the Annual Reports:

Vicar's Report

Warden's Report

Electoral Roll Update

Treasurer's Report

Lunch is served

5. Questions on the tables

Dessert is served

6. Feedback, Questions and Any Other Business

7. Dates of meetings, to be agreed by the members of the PCC in the Turner Room

8. Closing Prayers



ANNUAL REPORT OF THE PAROCHIAL CHURCH COUNCIL OF ST LUKE WITH ST BARTHOLOMEW FOR THE YEAR ENDED APRIL 2019

Vicar's Report

This report is bursting with stories of life from the ministry of this parish, and it is wonderful to read. It is a ministry we all share in, from gathering for midday prayer or to ask questions of life and the bible to planting and cooking tomatoes with school children, from caring for those who are unwell to welcoming people into the faith. All of this and so much more is made possible because of the way our faith helps us see everything we have as a gift that we can give back in thanks to God and to delight in the world around us. It is this sharing in God's delight that shapes our hearts and minds to find their purpose and fulfilment in being a (w)holy generous people.

This year has required us to make some big decisions, and none as big as the closing of St Bart's. That holy building was at the heart of a flourishing worshipping community for over a century, and has been a place of blessing for those who gathered there. It was a difficult decision to close the building, but it also felt like the right decision. To see the building, now, still holy and filled with God's presence, as a place of creativity for young people training in performing arts is a real joy. And to know, also, that we can continue to provide a ministry of chaplaincy is a great opportunity. As sad as it is to see the building cease to be a Church, it is wonderful to be able to be a part of the next phase of its life. As we close the doors on worship at the end of August, let's not stop praying for the ministry we can offer there, and for the young people who will come through those doors over the coming years.

This, of course, asks us to think again about how the St Luke's building might be altered as it becomes the focus of ministry and mission for our whole parish. We have had some very good conversations about that, and they will continue once the money for such changes becomes available. Any changes made to St Luke's will need to take account of the fact that not only is it our only Church building, but of the changing nature of how people engage with worship and spirituality, especially in an area like this with such a high degree of transience. The need for smaller, flexible worship services is increasing as people's availability every Sunday is decreasing; a parish Church needs to ask how it can accommodate that change physically as well as liturgically.

This year also saw the Parish request membership of Inclusive Church. This is a network of Churches seeking to deepen their welcome and hospitality to those who are often marginalised by Churches and wider society. Parish Churches are pretty unique in the diversity of people who gather in them, and it is really good to join with other Churches who are asking how we can celebrate that diversity, and ensure the boundaries of this Church are as wide as possible. After the Easter period, we will be looking at the Inclusive Church Welcome course, and I hope as many of us as possible take up the opportunity to join in.

This is, of course, the last report I will write as Vicar. This isn't the time to say goodbye, and there will be time for that over the August Bank Holiday. After I announced that I was to leave, someone asked me what I hoped I would be leaving behind. I'm not sure whether or not I am the best person to answer that question, but I can say that my only hope over the last few years has been to help people see the Church as an Us that includes the faithful laity, the clergy, those on the fringe of our communal life, and those who are far beyond the reaches of that life at the moment. It is an Us in which everyone can participate, and by doing so everything, from serving at the altar and singing in the choir to sweeping the floor after toddlers and giving out an umbrella becomes an opportunity to discover more deeply God's blessing that has been shared through Christ with all of humanity: 'You are my child, the beloved, with whom I am well pleased.'

Graeme

ANNUAL REPORT OF THE PAROCHIAL CHURCH COUNCIL OF ST LUKE WITH ST BARTHOLOMEW FOR THE YEAR ENDED APRIL 2019

Administrative information

St Luke's and St Bartholomew's are two churches joined into one parish, situated in Reading, Berkshire. They are part of the Diocese of Oxford within the Church of England. The correspondence address is ***The Vicarage, 50 London Road, Reading, RG1 5AS.***

The Parochial Church Council (PCC) is a charity which is registered with the Charity Commission.

Members of the PCC from the last APCM (29th April 2018) until the date this report was approved are:

Rev'd Dr Graeme Fancourt Vicar, chairman

Rev'd Christine Blackman Associate Priest

Rev'd Serena Tajima Curate

Kirsten Bayes Church Warden, St Luke's

Jane Kenyon Church Warden, St Bart's

Steve Allen Deputy Warden, St Luke's

Deanery Synod representatives (until 31st May 2020):

Leslie Green

Hilary Jakeman

Sally-Ann McDowell Treasurer

Marion Pitman Deputy Warden, St Bart's

Other elected members:

Alan Tonkyn

Paul Carnell

Roger Cox

Mary Evans

Nicola Taylor

Officers who resigned during this current year:

Ed Hopper

Simon Peatman Secretary

Chris Pyrah

Due to the resignation of Simon the PCC does not currently have a Secretary in post.

Structure, governance and management

The method of appointment of PCC members is set out in the Church Representation Rules. All Church attendees are encouraged to register on the Electoral Roll and stand for election on the PCC. Changes to the structure of the PCC were approved ahead of the last APCM and have been implemented this year. More details may be found in the review of the year, below.

Objectives and activities

St Luke with St Bartholomew's PCC has the responsibility of co-operating with the Vicar in promoting in the ecclesiastical parish the whole mission of the Church, pastoral, evangelistic, social and ecumenical. It also has the maintenance responsibilities for the Churches of St

Luke's, Erleigh Road, Reading; St Bartholomew's, London Road, Reading; and the Parish Hall, Erleigh Road, Reading.

Church attendance

The number on the Electoral Roll is not known at the time of preparing the Annual Report; however, the number last year was **161**. The number for this year will be announced at the APCM. The average weekly attendance in October was **81** (of which **12** under the age of 16) at St Luke's and **5** (of which **0** under the age of 16) at St Bart's. The combined attendance across all Christmas services in 2018 was **352**.

Review of the year

The PCC has met on 5 occasions since the last APCM. The Standing Committee prepares the agenda for each PCC meeting by email but in general does not meet formally unless circumstances demand it.

The PCC has spent a great deal of time working on the closure of St Bart's, which will now go ahead on August 24. The PCC appointed Nicola Taylor as our Safeguarding Officer, and she has led us through a review of our safeguarding policy and practices. The PCC has also spent some time looking at options for the reordering of St Luke's, if the money is made available to us from the sale of St Bart's. The sale is unlikely to take place for a number of years, so the work we have done will be picked up again when appropriate.

APCM 2019: Churchwardens' Report

St Luke's Church. I have greatly enjoyed my first year as Warden. The Parish relies on many teams of volunteers, whether serving on the PCC, safeguarding, managing the finances, working on the buildings, the garden, organising the work around services, hospitality, Sunday club, toddler group, the coffee mornings, and I have been impressed and thankful for everyone's continued dedication.

We are also blessed with a wonderful team of clergy, and I continue to give thanks for their ministry, during what has been a difficult few months for the parish.

For me, the main highlights this year were the introduction of the Parish giving scheme, which will help move the Parish finances to a sounder footing; and the wonderful Parish weekend, very well organised by Sarah, our administrator.

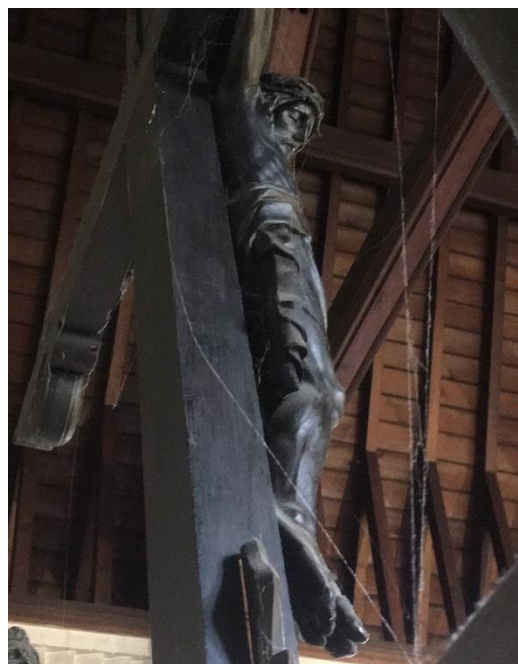
The coming year will be a busy one. Our Quinquennial inspection is due this year and will require a degree of preparation. The changes at St Bart's and the potential reordering of St Luke's will be a key focus in the year. We will need to clear space in St Luke's, both to de clutter and create space for any changes. And we will need to make sure we deliver our Safeguarding plan, so that everyone who takes part in a parish activity has a safe and happy experience.

Kirsten Bayes

St Bartholomew's Church is a place of quiet..
calm... peace.. silence...
that transcends everything, even when Read
College is in full swing Monday to Friday!

It was the birthplace of my Christian faith and
where I became part of a family greater than I could
ever have imagined.

This year, the decision to close it, was a very
difficult one, full of sadness, but, I know that
whatever happens in the future, God will always be
there, touching whoever comes in !



Jane Kenyon

Administrator's Report 2018/19

This new year did not start well for me with an extended absence from work so I would like to begin by saying thank you. I received an enormous amount of support and encouragement from the church community for which I am so grateful. Huge thanks go to our amazing clergy team who kept the office running smoothly over this period and enabled me to step back in to the job in such a gentle and loving way. Particular thanks must go to Graeme and Jane Kenyon who visited, messaged and encouraged me with an enormous amount of patience and kindness and continued to believe in me even when I didn't think I would be able to return. It was a joy to get back to work, everyone has been so supportive, and I was delighted to be here again, serving our community.

Visitors to both the church and the office continue to be frequent and regular with a wide variety of both church and non-church members calling in. The regulars we saw last year mostly continue to visit but there are constantly new people calling in to chat, sit, pray, listen, socialise, support or to find out more about the building and our activities. It is always a privilege being able to open the doors but particularly at times of great challenges in our society when people can feel lost, confused and are looking for answers. After the recent, tragic event at Reading University we were able to offer a place of comfort to a number of students and local residents in the days after.

These contacts, however brief, should never be underestimated. The opportunity to come alongside people presents itself daily and I am immensely blessed to be in a position where I meet so many varied and interesting people. The challenge of completing work around visitors remains of course and I am fortunate to have supportive colleagues and to be able to have quiet time when the church is closed to complete many of my tasks.

The church continues to be enjoyed by a number of groups on a regular basis. REInspired enjoy using the church as part of their work with local schools and the behaviour of the children attending this is, as always, outstanding and respectful. The church has also been used by Reading Festival Chorus and Reading Bach Choir for concerts and Reading School and Reading University for their Christmas Services. Sarah Knight and Serena launched the new Thursday Craft group which now has several regulars who are non-churchgoers. It is providing a lovely, grown up, social space for people to chat and get to know each other better. People are learning new skills and enjoying the opportunity to support one another. There is no charge for attending and there is always coffee and cake!

There have been several activities associated with Occasional Offices. We held two weddings and five baptisms, and this year has already been busy with baptism enquiries for the coming months. Sadly, we had a very difficult year of funerals and remembering with love several members of both congregations.

General Admin

Regular weekly admin is associated with producing newsletters, service PowerPoints, printing of intercessions, readings and occasionally music for the choir. The news sheet continues to be well used and I do try to cram in as much as possible to keep everyone up to date with services, events and information. Plans are underway to update the information on the external notice boards and to overhaul the content of internal boards. The issue previously reported with the delivery of our mail has been resolved and, when the office is open, the postman bypasses the letterbox and hand delivers to the office! We are in the process of updating all service booklets, this should be complete before Easter.

Hall Bookings

There is an online calendar where people can look to see availability and the online booking enquiry system seems to be working well.

The hall is in use most days with a very wide range of activities taking place. Most of our regular evening bookings have continued – Tango (including regular weekend classes), Karate and 5 Rhythms Dance group plus WI meetings (monthly). The Church Coffee morning and book sales continue the 1st Saturday of the month. The Capoeira group ceased to run due to lack of members and increasing cost, but we welcomed a new Lindy Hop group in their place. St Luke's Toddler Group continues very successfully on Wednesday mornings. Local councillor surgeries run throughout the year in the Turner Room and all three main political parties hold meetings here on a regular basis. Sunday Club make use of the hall most Sunday mornings. A children's dance group DiddiDance run a class on Tuesday mornings.

The NHS Holiday Club continues to make full use of the hall during school holidays doing their best to work considerably alongside our regular evening bookings. Family Aid use the whole building for one week in December for their annual Tots and Teens Toy Sort. It is an event which supports many families in need in our community. Last year over 1500 local children received Christmas presents as a result of this group. In addition to this there was again a surplus of toys due to huge generosity of local companies and individuals. For the second year, via a contact at Wycliffe, surplus good quality toys, games, books and toiletries were sent to a community in the North East where there is a huge number of families relying heavily on Foodbanks and a large influx of refugees. Family Aid make a financial donation to the church each year to help with running cost of the hall.

The Friday (NCT) group, Crawlers and Explorers, goes from strength to strength. The group has been making donations for use of the hall and a number of party bookings have resulted from attendees. As a result of hosting this group we have been able to assist them in providing a regular venue for monthly Paediatric First Aid courses and Breast-Feeding Peer Support Groups. Occasionally the first aid training will run at the rear of St Luke's to accommodate higher income groups in the hall.

The hall continues to be a very popular venue for children's parties, and we have repeat bookings and bookings due to people attending parties here. There were several other events taking place including charity concerts, strategy game events (increased from one to three over the year), plays, quizzes, baptism and first communion celebrations, yoga workshops, a wedding anniversary party and a barn dance! The Whiteknights Studio Trail included the hall again last year with local quilters exhibiting their handywork.

A National NCT has been running an ongoing training course which originally came to the Parish Hall as their regular venue was unable to cover some dates. They really love the venue and we will now host the bulk of their sessions which have been booked through to summer 2020.

The Local Producers Market continues the third Saturday of most months. There are a number of regular traders and the Rural Pie Company remains very popular among the church congregations! Footfall is variable but when the Garden Group run by Naomi German is on there is always a healthy interest in the market. Some good contacts are made through the market which has led to a few hall bookings and interest in other activities here.

My quest for regular business clients to improve the income stream for the hall continues. Parking is the main challenge here and the restrictive parking conditions make it extremely difficult to attract business from out of area. The early part of 2019 has been busy for the hall, and rates have been increased for one-off bookings.

My continued thanks to everyone who supports and encourages me in my role. It is such a pleasure to be part of the team at St Luke's and St Bart's and I am looking forward to continuing working with you and serving the Parish and Community.

Sarah Collins

Annual report from PCC Buildings Committee March 2019

This year we welcomed Serena as our chair of the committee.

Much of our time has been spent in maintaining the three buildings to their existing condition.

All the statutory inspections and annual maintenance contracts on our three properties are up to date. Routine repairs, maintenance and replacements of expired equipment have been carried out as the need required.

The Hall hire agreement has been revised, the entrance door lock replaced, heating control issues resolved, main hall strip lighting replaced with LED tubes and the secondary glazing removed in the main hall. Access to the garden has also been made easier.

During the cold weather it was necessary to replace the sump pump in the boiler room at St Luke's to prevent flooding and to lag the water pipe which had frozen. Replacing some of the lighting in the Nave has already led to energy savings and it is proposed to continue to install LED lights where appropriate in the church and hall.

At St Bartholomew's we have successfully dealt with a problem with tree roots, improved the security to the boiler room and repaired several water leaks on the north elevation roof.

Later this year the churches will receive their quinquennial inspections and we have to plan for some minor pointing of brickwork at St Luke's and the parish hall.

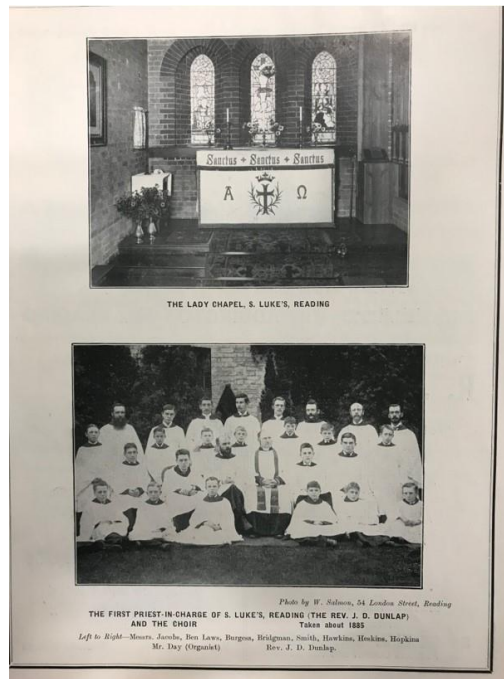
We again owe a huge thank you to Roger Cox for project managing and in many cases undertaking the many tasks involved in maintaining and refurbishing our three properties.

We would also like to thank Sarah for the day to day management of the Hall and overseeing the cleaning of both hall and St Luke's. This task has now improved following the return to work of Sarah our cleaner.

The decision to close St Bartholomew's and the potential reordering of St Luke's has led to interesting discussions but little major change.

We have recently started to prepare a statement of need and a statement of significance in preparation if reordering of St Luke's was to happen. One aspect of this was to research St Luke's Church building history to see if any of its features were designed by significant artists or architects. The result of this research has shown that the only significant features of the church are the reredos behind the high altar and the stained-glass windows at the East end of church, including those in the Lady chapel. The following photos show two of the important features of the church:





May I conclude this report by thanking all members of the congregation who have assisted the buildings group in maintaining the fabric of our three buildings.

Leslie Green
March 2019

Finance

Treasurer's Report

This report is based on the accounts produced by the treasurer directly using the accounting software.

At the summary level, in 2018 our income was greater than our expenditure. This is mainly due to the reduction in parish share we have had due to Fr G Fancourt now also being Area Dean. However, we also saw an increase in income due to increased rent from Read College for the use of St Bartholomew's as well as a small increase in hall rent.

INCOME

Total Income was about £127,000 (compared to £117,000 in 2017).

Income from donors

In 2018, this was about £46,000 (compared with £49,000 in 2017).

Income from buildings rent (hall and churches):

In 2018, income from buildings rent was about £52,000 (compared with £43,370 in 2017). In addition to the rent from Read College, we have actually had a small increase in hall rent (about £2,000).

Other income:

There was about £29,000 in other income during 2018. This included, for example, coffee mornings, weddings, funerals, dividends and Christmas Fair.

EXPENDITURE

Total expenditure was about £107,600 (compared to £137,000 in 2017).

Utilities and insurance (excluding water)

Insurance in the two churches was about £10,500 which is about £2,000 higher than in 2017, but this reflects the insurance marketplace where costs have increased.

Electricity in the two churches was about £3,000 which is slightly lower than in 2017.

Gas was lower (by about £3,000) in the two churches (about £8,000).

Hall gas and electricity for the hall was slightly lower than in 2017.

Charitable giving:

As in recent years, we did not give 10% of our planned giving to charities in 2018. Our plan is to continue to donate to some local charities regularly and then do one off fund raising for others throughout the year. We did, however, still manage to give about £3,700 to charities which is a slight reduction from 2017 (£3,950).

Parish Share:

Our Parish share has had a 50% reduction due to only having 0.5 priest as Fr Graeme is now Area Dean. Our parish share was just under £21,000 in 2018 because of this.

Parish Administrator:

Costs for Parish Administrator appear higher as there is now tax, National Insurance and pension to cover. (Total cost just under £19,000, which includes salary and these additional items). However, a proportion of the administrator costs are covered by the Deanery and so can be seen in the full accounts as a restricted donation (just under £8,000)

BALANCE OF FUNDS

Our usable funds have increased from 2017 where they were £82,000 to around £98,500 as we have received more than we have spent.

We do also have some untouchable funds, which were valued at £335,615 on 31 Dec 2018. These are the Lawrence Bequest, the Curacy fund, the Schoolrooms fund, and the Cockburn Bequest.

Reserves Policy

The usable funds that we hold in reserve have been increased due to an increase in rent of buildings. The reserves policy was not discussed in 2018, however our accounts show that we still meet the reserves policy as set in 2011.

The reserves policy is still to maintain reserves of at least £5,000 per building for emergency maintenance to the buildings. The maximum amount to be held in reserves was agreed to be £100,000, although we could potentially hold more if the PCC determined there was a valid reason for doing so.

All reserves are held as funds invested with the Central Board of Finance of the Church of England for the time being.

Sally-Ann McDowell

Safeguarding

- Nicola Taylor was appointed as the Parish Safeguarding Officer in May 2018.
- There have been changes in guidelines from the diocese, new training has been rolled out and there is an increased focus on Safeguarding within the Church of England.
- The Parish Safeguarding Policy was reviewed and approved in September 2018.
- A Safeguarding Audit was carried out In September 2018. This is an activity required annually and it identified a number of actions:
 - Details and documents that we need to have on display and/or available at church – all actioned.
 - Training – a number of gaps in training were identified. Individuals were notified of the training required for their roles in the parish and most of this training has now been completed either online or by attending a course jointly organised with other local parishes in February 2019.
 - DBS checks – a few gaps in our DBS checks have been identified and are being actioned.
 - Process Review – we need to carry out a review of our processes to ensure safeguarding measures are adequate (for example recruitment, visiting etc). There are no major areas of concern at present. This activity will be carried out as soon as possible.
 - Parish safeguarding log - this has been created to record training and DBS checks for all staff and volunteers.
- Costs in 2018 – calls for DBS checks, small outgoings to cover printing required for training courses.
- Overall, we are in a good position now, but there is still further work to do. As this is all work that will be done by volunteers, there will be no financial cost to the parish other than cost for DBS checks.

Worship Spaces

Music Director's report 2018/19

The choir continues to work hard rehearsing and singing at services, despite dwindling numbers at times; due to the loss of key members and many members struggling to commit on a regular basis with changing personal circumstances. I am therefore extremely grateful that every Sunday, we are able to come together to lead the music in the service, however big or small a group we are. We have undertaken some exciting projects in the past year, including working with local composer Vernon Speed to perform his Cantata and hymns for the first time. We also teamed up with the choir at Christchurch to experience an Evensong service with them and for them to experience a Sunday morning with us. Both great community experiences giving us an insight into the way we and other choirs work.

We continue to be affiliate members of 'The Royal Schools of Church Music' and work on the 'Voice for Life' medals. We have been using the new edition of 'Ancient and Modern' hymn books for the choir and are introducing and exploring more new hymns. We hope to introduce some new responses into services over the coming year as well. The choir continue to rehearse on Sunday mornings at St. Luke's at 9.45am and on the last Friday of each month, juniors 7-8pm and adults 7.30-8.30pm. We also have theory sessions throughout the year after church on occasional Sundays.

As ever thank you to those who assist with the other musical aspects; the band for Messy Mass, Gordon and Timothy for accompanying. Also thanks to Sarah for her support ensuring the appropriate music is organised for every service.

Gemma Bagshaw

Cell of Our Lady of Walsingham

During the past year, we have managed to continue much as before, despite the loss of our dear friend Pat Townsend [whose death, mentioned at last year's APCM itself, occurred just too late for inclusion in the report]. With Ray, Pat had been a member from the beginning of the Cell in 1997, and, until she started to become ill, faithfully attended the monthly Cell Mass – even on one occasion delaying going on holiday to do so! We still miss her, her presence, her reading at the Masses, and her appreciable - and appreciated – contribution to the 'Walsingham Intercessions' book with her amazing knowledge of so many details (all recorded in the “famous” book which she had at home).

As always, we have greatly benefited from the ministry of The Revd Christine, in celebrating and preaching at our Cell Masses and in her personal interest in us. We thank God for her and for her commitment to the Cell as we have made our regular “mini-pilgrimage” to the Shrine of Our Lady of Walsingham, as if we were actually there, giving thanks and offering intercessions and thus taking part in the Shrine's work and witness of prayer. blessing, and healing. We

have also again gladly welcomed non-members who have joined in our worship, one of them supporting us as often as she possibly could despite the demands of frequent stints as a live-in carer.

At the time of writing, a review of the Cell is about to be undertaken, in conjunction with the Membership Secretary at the Shrine. We ask the Parish's prayers for this, as we seek God's will for our future. In the meantime, do please continue to let us know of thanksgivings and intercessions to offer on your behalf – either by writing them in the 'Walsingham Intercessions' book on the table by the Lady Chapel entrance, or by speaking to one of the Clergy or to me as Secretary. Better still, why not come along and take part yourself?

Libby Stroud
Cell Secretary

Social Spaces

Hospitality

We continue to receive good feedback from people visiting the church for services or during the day. Thank you to all those who volunteer and do the rotas to make this happen: whether that is greeting people arriving at church, bringing food, serving tea or coffee, or simply saying hello to new faces. Please continue to invite friends and colleagues to church so they can experience this warm welcome!

The committee has been quiet this year, but you will nevertheless have noted the changes as the back of St Luke's, removing the cards and tidying up the children's area. We also worked with the Minster on two very successful "Open Table" services, as part of links to Reading Pride.

This year we will be reviewing the hospitality elements of the reordering; considering how we welcome local communities including students, people with disabilities, LGBT+ people and people from other faiths in the area; as well as ensuring we provide a safe environment for all those who visit us.

Hospitality Coordinator - Kirsten Bayes

St Luke's Toddler Group : Report for APCM 2019

Our Toddler group continues to flourish. Since the writing of the 2018 Report a whole year ago, there have been 40 Wednesday mornings on which a stalwart little band of volunteers have arrived at the Parish Hall shortly after 8 a.m., to spend the next hour setting out tables and chairs and mats and buggies for dolls and a slide and a crawl-through tunnel and a mini-trampoline and a garage and boxes of books and cars and farm animals and dressing up clothes and playdough and puzzles – the list goes on! – until everything is ready and at 9.15 the babies and the toddlers begin to arrive with their Mums, Dads, Grannies Granddads and Carers. Numbers (just counting the children) have varied from 16 to 17 up to 30 +. We have noticed a considerable increase since Reading Council closed down nearly all of the Council run nurseries, including a major one when the Children's Centre in Hamilton Road ceased to function. We do not need to advertise ourselves! – 'word of mouth' is powerful, and nowadays there is an app which, with a single tap, reveals to newcomers to Reading all that's still going on for small children in our town. We didn't put ourselves on it! – but 'We saw you on 'Hoop' is now by far the commonest reply to the question 'How did you get to hear about us?'

For an hour and a half the children enjoy 'free play': they do colouring or they cut shapes from playdough or they set out the train set or arrange the farm animals or they slide or bounce or pedal on trikes or sit on their parents' knees and listen to a story; the small babies kick their legs on the mat while 'crawlers' make a bid to escape from their grown-up and to start exploring the world, while the Mums and the Dads and the Grannies and Grandads talk and

talk with each other and with us until the cry goes up that it's 'putting-away time' and with the help of quite a few of the adults everything is quickly packed away in our cupboard. Then we all sit in a semi-circle on big chairs and small chairs, ready for 'Action Songs': We sing, and we clap, and we march, and we lie on the floor pretending to be 'sleeping bunnies' until it's 'home time'. And a lot of tired but happy children wave us goodbye as they go and we do the final clearing up and thank this Wednesday's kind lady from St Luke's who has been patiently serving teas and coffees and squash all morning, and then we go home, also weary but satisfied at a job well done!

Being with the toddlers and their adults is a demanding, but really enjoyable job! It is wonderful to see the children grow in height and confidence, and a delight to talk with so many friendly, mostly cheerful, adults from many countries... If YOU enjoy meeting and conversing with new people, you might think of joining our list of coffee makers where we need more volunteers like you!

We do not 'push' the fact that we are worshippers at St Luke's, but are very happy that in the last year or so we have had several enquiries from parents about Baptism, and that now the small children who gather by the altar on Sundays to light the candles or to 'help' the celebrant, include some who began their Christian journey at St Luke's Toddler Group.

Our finances: we ask for just £1 per family per week. For the year starting at the beginning of April 2018 to the end of March 2019 (just one week to go) we expect all these weekly £1s to total a little over £800 - sufficient funds for us to maintain our many good quality toys, repairing or replacing them as necessary; to enable us to provide a free Christmas party, with food and a lovely entertainer, and a gift for each child of a picture book of the Christmas story; and to give each child a small chocolate egg at Easter. We have made a donation at the end of each term to the PCC to help heat the Hall for the 3 hours we are there each Wednesday: £75 at the end of Summer Term, £100 at Christmas and we will give £100 again at the end of the Spring term. A year or so ago we asked for 2 new toddler height tables to replace 2 old and worn tables which were no longer suitable for little children to sit at for their drink and biscuits. These tables, used by many other users of the Hall, were paid for by the PCC. Most of the photocopying we need, we do ourselves at home, and claim repayment from the Toddler 'kitty'. We reckon that photocopying done for us at the Parish Office cannot amount to even £5 per year. Due to the fact that as we are St Luke's Toddler Group we are privileged to have free use of the Hall, we believe that we have virtually no call on the Parish Finance.

Penny Starr, Toddler Group Coordinator

Fair Trade

"And what does the LORD require of you but to do justice, and to love kindness, and to walk humbly with your God?" Micah 6:8

This was one of the Bible verses which inspired the people who started Traidcraft 40 years ago, and it remains a Christian trading and development organisation. Much of its business is conducted by Fair Traders like me, based in churches or Fair Trade shops such as the World Shop on London St. in Reading, but it also supplies goods to other shops, large & small.

You will have heard, I am sure, that Traidcraft very nearly went to the wall last year. This is hardly surprising, when even well established businesses like Marks & Spencer have had difficulties. However, Traidcraft has bounced back with a reduced, but still amazing, range of goods. If you look at the current leaflet of Easter goods, you will be able to choose from a large range of chocolate treats and greetings cards.

There is a Traidcraft stall regularly at the church coffee morning, in the parish hall every first Saturday of the month, and a stall in St. Luke's church after the family service every second Sunday of the month. In between times, people can order items from me, and I occasionally run a stall at one of our neighbouring churches.

There is great camaraderie among Fair Traders. I buy items from the Fair Trader who runs a stall every year at Caversham Court Gardens, when Christmas trees are being sold there, & when I needed some items in a hurry, I was able to call on the local network!

There is a modest profit on some items, especially those I buy in bulk, & many people make a donation when they purchase goods. I send all this to Traidcraft Exchange, the development charity set up a few years ago to give even more help to people who want to work their way out of poverty. In January this year, from your generosity, I was able to send £144.

Your shopping choices are more powerful than you think, and if you choose Fair Trade you are making sure that not only do you get top quality goods, but you can trace every transaction which got the goods from the producer to you. You know then that every person involved was treated with respect & paid properly. It's a win:win:win situation!

Hilary Jakeman

Coffee Mornings

Since this time last year, nine more First Saturday of the month coffee mornings have been held in the Church Hall, raising a total of over £1,300 which has been passed on to a variety of charities, some local, some national, some international.

Thus we have supported :

2018 April : Traidcraft Exchange : to help Traidcraft producers worldwide educate their children £154

May: Ronald MacDonald House, Radcliffe Hospital, Oxford – provides overnight accommodation for families with a child staying in hospital (MU charity) £140

June: Cystic Fibrosis Research UK £133.50

July: Medical Aid to Palestine £150

September: Reading Family Aid £100

October: Traidcraft : sells, using fair trade principles, artisan goods made by craftsmen and women worldwide. £134

November : Chocolatada: to help the children of a poor riverside settlement in Huancayo, Peru, enjoy a Christmas treat of a hot chocolate ,a piece of Christmas bread and a toy. £300

2019

Feb : Launchpad Reading (help for the homeless and jobless).

£136

March : Church Action on Poverty

£100

The coffee mornings are held 11 a.m to noon, 1st Saturday of the month – do come! Cakes, jams, Books, Bric-a-Brac ,Traidcraft items for sale, and a raffle! Enjoy a coffee and a chat with fellow parishioners and local residents. We are very pleased to welcome visitors from Pembroke Lodge just opposite. The coffee morning offers a fine opportunity for ‘outreach’! We would welcome more parishioners and clergy too to talk with newcomers – our volunteer group is small – and it is very difficult to add up prices and chat at the same time! We would also appreciate if a few more parishioners could do a little baking to add to the currently limited range of home-made goods we can offer.

If any food goods are left over on Saturday morning they are brought across, still fresh, for sale after the 10.30 Sunday Service – a chance for people to contribute to that month’s charity. We thank you for your generosity! We will be happy to consider any suggestions you might like to make re the choice of charities – Do you have a favourite charity you’d like us to support?

John Starr

Pastoral Care Team Report

The Pastoral Care Team has continued to offer support to parishioners at home, in Care Homes or in hospital. The team consists of Serena Tajima, Mary Evans and me, Sheila Cox. We have lost 3 members of the team during the year. Monica Gibson has moved out of the area to be nearer her son. Chris Pyrah and Simon Peatmen have moved on to new jobs. I'd like to thank all the team for their support and visiting during the year.

We continue arranging Senior Citizens' Teas every other month. About 12 of us gather at different houses each meeting. The team would like to thank the drivers providing lifts to the teas and the generous hosts. Also, to those drivers who kindly offer lifts to church each Sunday.

Sheila tries to keep the prayer list up to date of those members who need praying for. Please contact her or Sarah if names need adding on or taking away from the weekly sheet. Thanks must also go to members of the church who give support to each other without necessarily any recognition.

Sheila Cox - Pastoral Care Leader

Thinking Spaces

Small Groups

There is a real need & demand in Redlands parish for a daytime Bible study group. This year, 9 of us are meeting every Tuesday in Lent, to look at "Dangerous Stories, scripture from the margins". This is an excellent set of 5 Bible studies produced by Church Action on Poverty.

At the time of writing we have met only twice, and have looked at John 10, 1-14, and Luke 15, 1-10, with the next session using Luke 15, 11-32. At the end of each session, there is a list of matters on which it would be good to act! There is also helpful, & thought provoking, background historical material.

We look forward to the next meetings of a very worthwhile series.

Hilary & Francis Jakeman

The Group, which meets at Shelagh and Alan Tonkyn's house, has consisted of ten regular members this year. Outside Lent, the Group meets once a month; in Lent it turns into one of two Lent Groups (see below) and meets every week.

From May until November, our discussions were based on a series of introductory sessions in the Bible Society 'Lyfe' course, involving a video introduction by a range of theologians, and a Bible reading with follow-up questions. The themes were: Prayer, Holiness and Authenticity, the Holy Spirit, Compassion Ministries, the Bible and God's Word, and God in Everyday Life.

Amongst the questions we considered were:

- What does your current practice or rhythm of prayer look like?
- Discuss what it might mean to be 'holy'. Does the idea of living a holy life sound inviting?
- The Holy Spirit is often said to be the 'forgotten' person of the Trinity – why might this be?
- How good are you at encouragement, serving and compassion – does it come easily and naturally to you?
- What captivates or amazes you most about Jesus?
- How can we begin to consider all our work (paid or unpaid) as a 'vocation' or 'calling from God'?

After our pre-Christmas social meeting in December, we turned our attention in January and February to Paul's Epistle to the Philippians. Questions we considered included:

- What kind of outlook and expectation should a Christian have, according to St Paul, and how does this contrast with the outlook of those categorised as 'enemies of the cross of Christ'? How can we reconcile attention to 'earthly things' with living as a Christian?

At the beginning of Lent, as happened last year, two of our members (Francis and Hilary Jakeman) left us to form a daytime Lent Group, based on materials from Church Action on

Poverty. Our Group continued, with one additional member, for evening discussions based on a Bible Reading Fellowship course ('Lent with New Daylight'), looking at the themes of 'Place', 'Exile', and 'Towards Calvary and Beyond'. So far, we have looked, as individuals, at Bible passages dealing with seven OT and seven NT places which were significant in mankind's encounter with God, using our weekly meetings to review and discuss.

During the year we were saddened by the death of Bernard Harrington, who was a founder, and very faithful, member of our House Group, and whose Christian kindness and courtesy were an inspiration to us all. However, we were greatly cheered by the presence at our Christmas social meeting of Margaret Carter, another inspiring founder member who continues to be a faithful congregation member – now mainly at St Luke's church.

Alan Tonkyn

Over Breakfast

This year 'Over Breakfast' began. This is an opportunity for those who cannot meet during the days or evenings of the week to gather together at 9am on a Sunday morning. We meet on the first Sunday of each month at the back of Church and enjoy pastries and coffee whilst we study and discuss the Bible together. So far, we have discussed the way the early Church understood the life, death, resurrection, and Kingdom of Jesus, and are currently working through the book of Revelation as a way of 'seeing' Christ, the world, the church, and the future.

Graeme

Creative Spaces

Erleigh Road Community Garden

The garden continued to thrive, and it was a real pleasure to see so many people get involved and help maintain this peaceful and green community space. We ran regular gardening sessions twice a week from March to October on a Wednesday afternoon and Saturday morning and Mary very kindly continued to provide her lovely refreshments on Saturdays. We had a good harvest and picked the first apples and pears from the newly planted fruit trees. We also harvested strawberries, rhubarb, lettuce, courgettes, pumpkins, spinach, French beans and more.

We welcomed back pupils from Redlands Primary School who learned about different aspects of gardening and the children thoroughly enjoyed using the space. In addition to this we held one-off events such as apple pressing, pumpkin carving, art and garden wildlife sessions. Mary ran cookery workshops for children using produce from the garden including pizza making and apple and blackberry muffins.

In October the RHS came along to the garden to create short film about growing your own food in a community space. Some pupils from Redlands came along to take part in this too and we harvested vegetables which were then used to make a very tasty minestrone soup. We're very proud of the end result and the film is currently being used to promote both the RHS's Community Gardening and School Gardening campaigns.

As Spring is here the garden sessions have started up again and are on Tuesdays from 3.30-4.30pm and Saturday mornings 10-11.30am. They are drop in, free sessions and everyone is welcome. For further information please email Naomi at garden@redlandsparish.org.uk.

Naomi German

APCM Read Chaplain Report

This year has been a really positive year. Read college celebrated 10 years since they started, and they now feel like a well-established college with an excellent reputation. This is underlined by the fact that Read will have filled all their spaces for the next academic year and may in fact be oversubscribed. Their Foundation Courses in Musical Theatre and Acting had a 100% success rate in 2017 with Read students now at almost every major Dance and Drama College in London and across the UK. Their 6th form courses in Acting and Musical Theatre also have 100% success rate since the courses started.

Pastorally I continue to go into college on Tuesdays 2-4pm, Wednesdays 11am-1pm and Thursdays 2-4pm. Read also employ a counsellor who comes once a week. Overall emotionally the college feels a lot calmer than it did this time last year and I feel the pastoral support on offer has helped. It is clear that Helen Read has really pushed the importance of creating a culture that sees value in talking and that this will help to deal with issues before they become more difficult to deal with.

It is such a joy to spend time with all the students and staff at Read and spending more time at the college has meant that more students feel comfortable to come and speak to me. In terms of using St Bart's church it is clear how much the students and staff love the building. Read college have out grown the building now but really want to stay and try to work around that. While decisions are being made about the building and whether Read will be able to buy it, I have been asked to join their buildings committee so that we are all kept in the loop of what is happening.

I'm really looking forward to the rest of the year ahead especially when the students perform at the end of term. This year the actors will be performing their showcase piece on 25th May at South Hill park and the Musical Theatre students will be performing their Showcase on 3rd July at the Arlington Arts Centre. Further details will be in the notice sheet closer to the time if anyone wanted to get tickets to see them perform.

Bertie pops in to Read when he gets a spare moment and the students always enjoy having a cuddle or playing with him.



Serena

St Luke with St Bartholomew, Reading

End of Year Financial Statements

Year ending 31 Dec 2018

Introduction

As per last year, the accounts have been produced directly from the accounting system (Finance Co-ordinator v4.30). Note, some figures may not tie up but this is simply due to showing only the pound.

Statement of Financial Activities

	Unrestricted funds	Restricted funds	Endowment funds	Total funds	Prior year total funds
Income and endowments from:					
Donations and legacies	48,108	7,936	—	56,045	55,721
Income from charitable activities	19,061	—	—	19,061	16,203
Other trading activities	2,056	—	—	2,056	2,542
Investments	35,083	—	14,624	49,708	42,298
Total income	104,310	7,936	14,624	126,871	116,765
Expenditure on:					
Expenditure on charitable activities	84,768	7,936	14,624	107,329	136,828
Other expenditure	250	—	—	250	100
Total expenditure	85,018	7,936	14,624	107,579	136,928
Net income / (expenditure) resources before transfer	19,292	0	—	19,291	(20,162)
Transfers					
Gains / losses on investment assets	—	—	(26,213)	(26,213)	26,877
Gains on revaluation, fixed assets, charity's own use	—	—	—	—	—
Net movement in funds	19,292	0	(26,213)	(6,921)	6,714
Total funds brought forward	75,432	—	361,828	437,261	430,546
Total funds carried forward	94,724	0	335,615	430,339	437,261
Represented by					
Unrestricted					
General fund	94,724	—	—	94,724	75,432
Restricted					
Administrator	—	0	—	0	—
Endowment					
Cockburn Bequest	—	—	108,454	108,454	110,106
Curacy Fund	—	—	6,057	6,057	6,149
Lawrence Bequest	—	—	152,576	152,576	176,002
Schoolrooms Fund	—	—	68,527	68,527	69,570

Balance sheet

Class and code	Description	This year	Last year
Fixed assets			
	Schoolrooms Fund	68,526	69,570
	Cockburn Bequest	108,453	110,104
	Lawrence Bequest	152,570	175,996
	Nuttall Bequest	—	—
	Curacy Fund	6,055	6,147
	Total Fixed assets	335,606	361,819
Current assets			
	NatWest St Lukes	22,923	5,753
	NatWest Hall	4,972	4,694
	Lloyds St Barts	20,685	9,244
	Santander St Lukes	3,469	1,586
	CCLA (CBF) St Lukes deposit account	31,780	25,680
	CCLA (CBF) St Barts deposit account	1,939	1,930
	CCLA (CBF) Hall deposit account	2,172	2,161
	Cash in hand	428	333
	Accounts Receivable	10,263	30,354
	Total Current assets	98,634	81,739
Liabilities			
	Accounts Payable	3,901	6,297
	Total Liabilities	3,901	6,297
	Net Asset surplus(deficit)	430,339	437,261
Reserves			
	Excess / (deficit) to date	19,291	—
	Starting balances	437,261	410,383
	Gains/(losses) on investment assets	(26,213)	26,877
	Total Reserves	430,339	437,261
	Represented by funds		
	Unrestricted	94,724	75,432
	Designated	—	—
	Restricted	0	—
	Endowment	335,615	361,828
	Total	430,339	437,261

Statement of assets and liabilities

	General	Designated	Restricted	Endowment	This year	Last year
Fixed assets - Tangible assets						
Schoolrooms Fund -	—	—	—	68,526	68,526	69,570
Cockburn Bequest -	—	—	—	108,453	108,453	110,104
Lawrence Bequest -	—	—	—	152,570	152,570	175,996
Curacy Fund -	—	—	—	6,055	6,055	6,147
Totals	—	—	—	335,606	335,606	361,819
Current assets - Cash at bank and in hand						
NatWest St Lukes -	39,579	—	10,980	(27,637)	22,923	5,753
NatWest Hall -	16,655	—	(11,392)	(291)	4,972	4,694
Lloyds St Barts -	6,101	—	270	14,314	20,685	9,244
Santander St Lukes -	6,270	—	—	(2,801)	3,469	1,586
CCLA (CBF) St Lukes deposit account -	15,193	—	—	16,587	31,780	25,680
CCLA (CBF) St Barts deosit account -	1,939	—	—	—	1,939	1,930
CCLA (CBF) Hall deposit account -	2,172	—	—	—	2,172	2,161
Cash in hand -	428	—	—	—	428	333
Totals	88,341	—	(141)	171	88,371	51,385
Current assets - Debtors						
Accounts Receivable -	10,263	—	—	—	10,263	30,354
Totals	10,263	—	—	—	10,263	30,354
Liabilities - Agency accounts						
Agency collections -	141	—	(141)	—	—	—
Totals	141	—	(141)	—	—	—
Liabilities - Creditors: Amounts falling due in one year						
Accounts Payable -	3,738	—	—	162	3,901	6,297
Totals	3,738	—	—	162	3,901	6,297
Grand total	94,724	—	0	335,615	430,339	437,261

Fund movement by type

	Opening	Incoming	Outgoing	Transfers	Gains/losses	Closing
Admin - Administrator						
Restricted	—	7,936	7,936	—	—	0
Sub-total for Admin	—	7,936	7,936	—	—	0
Cockburn - Cockburn Bequest						
Endowment	110,106	3,650	3,650	—	(1,651)	108,454
Sub-total for Cockburn	110,106	3,650	3,650	—	(1,651)	108,454
Curacy - Curacy Fund						
Endowment	6,149	149	149	—	(92)	6,057
Sub-total for Curacy	6,149	149	149	—	(92)	6,057
Lawrence - Lawrence Bequest						
Endowment	176,002	8,518	8,518	—	(23,426)	152,576
Sub-total for Lawrence	176,002	8,518	8,518	—	(23,426)	152,576
PWE - Parish Weekend						
Restricted	—	—	—	—	—	—
Sub-total for PWE	—	—	—	—	—	—
School - Schoolrooms Fund						
Endowment	69,570	2,306	2,306	—	(1,043)	68,527
Sub-total for School	69,570	2,306	2,306	—	(1,043)	68,527
General - General fund						
Unrestricted	75,432	104,310	85,018	—	—	94,724
Sub-total for General	75,432	104,310	85,018	—	—	94,724
Grand total	437,261	126,871	107,579	—	(26,213)	430,339

PARISH OF ST LUKE WITH ST BARTHOLOMEW, READING

NOTES TO THE FINANCIAL STATEMENTS FOR THE YEAR ENDED 31 DECEMBER 2018

1. ACCOUNTING POLICIES

The financial statements have been prepared in accordance with the Church Accounting Regulations 1997 to 2001 together with applicable accounting standards and the Charities SORP (FRS 102).

The financial statements have been prepared under the historical cost convention as modified by the annual revaluation of listed investments to market value.

Funds

General funds represent the funds of the PCC that are not subject to any restrictions regarding their use and are available for application on the general purposes of the PCC. Funds designated for a particular purpose by the PCC are also unrestricted.

The accounts include all transactions, assets and liabilities for which the PCC is responsible in law. They do not include the accounts of church groups that owe their main affiliation to another body nor those that are informal gatherings of Church members.

Incoming Resources

Voluntary income and capital sources:

- Collections are recognised when received by or on behalf of the PCC.
- Planned giving receivable under covenant is recognised only when received.
- Income Tax recoverable on covenants or gift aid donations is recognised when the income is recognised.
- Grants and legacies to the PCC are accounted for as soon as the PCC is notified of its legal entitlement and the amount due.
- Income from fund raising events is accounted for net of incidental expenses.

Other ordinary income:

- Rental income from the letting of church premises is recognised when the rental is due.

Income from investments:

- Dividends and interest are accounted for when receivable. Tax recoverable on such income is recognised in the same accounting year.

Resources used

Grants:

- Grants and donations are accounted for when paid over, or when awarded, if that award creates a binding obligation on the PCC.

Activities directly relating to the work of the Church:

- The diocesan quota or parish share is accounted for when payable.

Fixed assets

Consecrated land and buildings and movable church furnishings:

- Consecrated and beneficed property is excluded from the accounts by s.10 (2)(b) of the Charities Act 2011.
- No value is placed on movable church furnishings held by the churchwardens on special trust for the PCC and which require a faculty for disposal since the PCC considers this to be inalienable property. All expenditure incurred during the year on consecrated or benefice buildings and movable church furnishings, whether maintenance or improvement, is written off as expenditure in the SOFA and separately disclosed..

Investments:

- Investments are stated at market valuation.

Current assets:

- Short-term deposits include cash held on deposit either with the CBF Church of England Funds or at the bank.

Analysis of income and expenditure

					Total	
	Unrestricted	Designated	Restricted	Endowment	This year	Last year
INCOME AND ENDOWMENTS						
Donations and legacies						
Giving	36,329	—	—	—	36,329	38,320
Tax recoverable on Gift Aid	9,739	—	—	—	9,739	9,180
Recurring grants	—	—	—	—	—	2,828
Non-recurring one-off grants	—	—	7,936	—	7,936	—
Other funds generated	210	—	—	—	210	—
Total	48,108	—	7,936	—	56,045	55,721
Income from charitable activities						
Fees for weddings and funerals	1,903	—	—	—	1,903	995
Church hall lettings - objectives	17,158	—	—	—	17,158	15,208
Total	19,061	—	—	—	19,061	16,203
Other trading activities						
Rummage sales etc	1,024	—	—	—	1,024	1,280
Bookstall sales - fund raising	1,032	—	—	—	1,032	1,262
Total	2,056	—	—	—	2,056	2,542
Investments						
Dividends	—	—	—	14,624	14,624	14,038
Bank and building society interest	163	—	—	—	163	92
Rent from lands or buildings	34,920	—	—	—	34,920	28,167
Total	35,083	—	—	14,624	49,708	42,298
INCOME TOTAL	104,310	—	7,936	14,624	126,871	116,765

EXPENDITURE

Expenditure on charitable activities

Charitable giving	3,658	—	—	—	3,658	3,952
Ministry parish share etc	8,801	—	—	11,982	20,784	27,618
Assistant staff costs	5,474	—	—	—	5,474	4,735
Salary of parish administrator	11,052	—	7,936	—	18,989	12,666
Working expenses of incumbent	2,570	—	—	138	2,709	1,965
Vicar's telephone	—	—	—	—	—	97
Education	33	—	—	—	33	213
Parish training and mission	676	—	—	2,306	2,983	6,123
Church running - insurance	10,560	—	—	—	10,560	7,962
Church office - telephone	922	—	—	—	922	1,194
Organ / piano tuning	474	—	—	—	474	460
Church maintenance	3,683	—	—	—	3,683	8,413
Cleaning	4,323	—	—	—	4,323	4,996
Upkeep of services	6,170	—	—	177	6,347	6,329
Upkeep of churchyard	2,778	—	—	—	2,778	830

Administration	5,555	—	—	20	5,575	9,394
Church running - electric	3,057	—	—	—	3,057	3,448
Church running - gas	8,017	—	—	—	8,017	11,431
Church running - water	288	—	—	—	288	321
Hall running - electricity	895	—	—	—	895	1,160
Hall running - gas	2,695	—	—	—	2,695	3,210
Hall running - insurance	—	—	—	—	—	2,342
Hall running - maintenance	2,571	—	—	—	2,571	1,540
Hall running - water	504	—	—	—	504	605
Church major repairs - structure	—	—	—	—	—	4,875
Church major repairs - installation	—	—	—	—	—	6,868
Hall + major repairs - installation	—	—	—	—	—	983
Hall + interior and exterior decorating	—	—	—	—	—	3,087
Total	84,768	—	7,936	14,624	107,329	136,828

Other expenditure

Governance costs examination/audit fee	250	—	—	—	250	100
Total	250	—	—	—	250	100
EXPENDITURE TOTAL	85,018	—	7,936	14,624	107,579	136,928
GRAND TOTAL	19,792	—	0	—	19,291	(20,162)

4 FIXED ASSETS FOR USE BY THE PCC

INVESTMENT ASSETS

Investments held by the Central Board of Finance – Investment units.

Cost at 31 December 2018 was £64,633 (market value £335,606) and at 31 December 2017 £64,633 (market value £361,819).

5 ANALYSIS OF NET ASSETS BY FUND

	Unrestricted Funds	Restricted Funds	Endowment Funds	Total
Fixed assets and investment	-	-	335,606	335,606
Current assets	98,634	-	-	98,634
Current liabilities	(3,901)	-	-	(3,901)
Fund balance	£94,733	-	£335,606	£430,339

See note 7 below for identification of funds.

6 LIABILITIES: AMOUNTS FALLING DUE WITHIN ONE YEAR

	2018	2017
Accruals and deferred income	£3,901	£6,297
	=====	=====

7 FUND DETAILS

The endowment fund comprises the Church School Rooms Fund, Curacy Fund, Lawrence and Cockburn Bequests.

This report dated 22 May 2019:

Approved by the Parochial Church Council on 25 JUN 2019 and signed on its behalf by:

John Wain

Barry

Kris L B

Joe Key



Section A

Independent Examiner's Report

Report to the trustees/
members of

Charity Name

The Parochial Church Council of the Ecclesiastical Parish of St Luke with St Bartholomew

On accounts for the year
ended

31st December 2018

Charity no
(if any)

1158694

Set out on pages

See accompanying Annual Report and Financial Statements (including SOFA, Balance Sheet & Notes)

I report to the trustees on my examination of the accounts of the above charity ("the Trust") for the year ended **31/12/2018**.

Responsibilities and
basis of report

As the charity's trustees, you are responsible for the preparation of the accounts in accordance with the requirements of the Charities Act 2011 ("the Act").

I report in respect of my examination of the Trust's accounts carried out under section 145 of the 2011 Act and in carrying out my examination, I have followed all the applicable Directions given by the Charity Commission under section 145(5)(b) of the Act.

Independent
examiner's statement

I have completed my examination. I confirm that no material matters have come to my attention in connection with the examination (other than that disclosed below *) which gives me cause to believe that in, any material respect:

- the accounting records were not kept in accordance with section 130 of the Charities Act; or
- the accounts did not accord with the accounting records; or
- the accounts did not comply with the applicable requirements concerning the form and content of accounts set out in the Charities (Accounts and Reports) Regulations 2008 other than any requirement that the accounts give a 'true and fair' view which is not a matter considered as part of an independent examination.

I have no concerns and have come across no other matters in connection with the examination to which attention should be drawn in this report in order to enable a proper understanding of the accounts to be reached.

** Please delete the words in the brackets if they do not apply.*

Signed:

Date: 22/05/2019

Name:

Michael Dix

Relevant professional
qualification(s) or body

Chartered Member (Institute of Chartered Accountants England & Wales)

(if any):

Address:

19 Harrington Close
Reading
RG6 3BU

Section B

Disclosure

Only complete if the examiner needs to highlight material matters of concern (see CC32, Independent examination of charity accounts: directions and guidance for examiners).

Give here brief details of any items that the examiner wishes to disclose.

None to report



Section A

Independent Examiner's Report

**Report to the trustees/
members of**

Charity Name

The Parochial Church Council of the Ecclesiastical Parish of St Luke with St Bartholomew

**On accounts for the year
ended**

31st December 2018

**Charity no
(if any)**

1158694

Set out on pages

See accompanying Annual Report and Financial Statements (including SOFA, Balance Sheet & Notes)

I report to the trustees on my examination of the accounts of the above charity ("the Trust") for the year ended **31/12/2018**.

**Responsibilities and
basis of report**

As the charity's trustees, you are responsible for the preparation of the accounts in accordance with the requirements of the Charities Act 2011 ("the Act").

I report in respect of my examination of the Trust's accounts carried out under section 145 of the 2011 Act and in carrying out my examination, I have followed all the applicable Directions given by the Charity Commission under section 145(5)(b) of the Act.

**Independent
examiner's statement**

I have completed my examination. I confirm that no material matters have come to my attention in connection with the examination (other than that disclosed below *) which gives me cause to believe that in, any material respect:

- the accounting records were not kept in accordance with section 130 of the Charities Act; or
- the accounts did not accord with the accounting records; or
- the accounts did not comply with the applicable requirements concerning the form and content of accounts set out in the Charities (Accounts and Reports) Regulations 2008 other than any requirement that the accounts give a 'true and fair' view which is not a matter considered as part of an independent examination.

I have no concerns and have come across no other matters in connection with the examination to which attention should be drawn in this report in order to enable a proper understanding of the accounts to be reached.

** Please delete the words in the brackets if they do not apply.*

Signed:

Date: 22/05/2019

Name:

Michael Dix

**Relevant professional
qualification(s) or body**

Chartered Member (Institute of Chartered Accountants England & Wales)

(if any):

Address:

19 Harrington Close
Reading
RG6 3BU

Section B	Disclosure
------------------	-------------------

Only complete if the examiner needs to highlight material matters of concern (see CC32, Independent examination of charity accounts: directions and guidance for examiners).

Give here brief details of any items that the examiner wishes to disclose.

Give here brief details of any items that the examiner wishes to disclose.	None to report
--	----------------