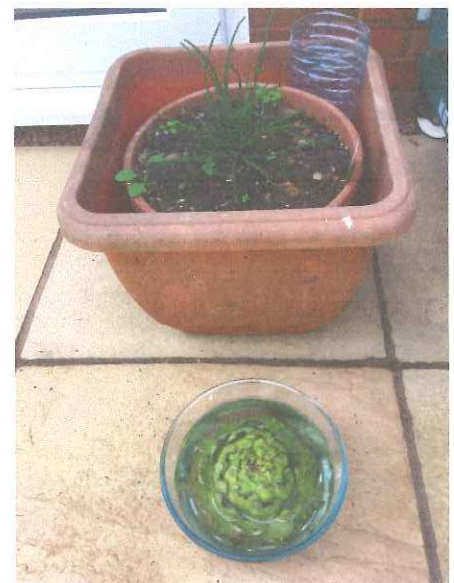


## Summary of the 2018 – 2019 Activities

### A mixture of research:

Perennial edibles at the Mill and Dovehouse



Just some of the many plants that  
found good homes

Plus anaerobic digester development at the University of Sheffield.

Our trustee is completing a PhD focused on micro-scale anaerobic digestion and will later use this research to develop an appropriate green waste solution at Forest Harvest. Further research and practical work is planned as a joint project with a London-based charity (LEAP) to test the potential of cassava waste in Nigeria, again on the theme of urban micro-scale anaerobic digestion.

### Trustees attending lectures on no-dig and hydroponics:



The new field next to the Mill ready for no-dig





This knowledge was put into practice with the development of a "Tower of Babel".

A recycled car roof pod collects the grey water which is timed to feed the plants at intervals using gravity and a float valve.

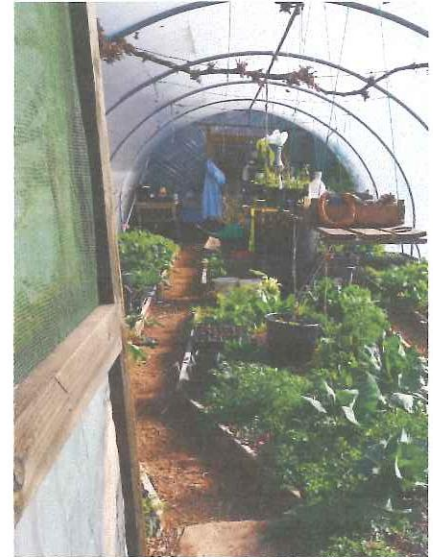
The 50% transparent solar panel provides a greenhouse effect for the plants and at the same time light to work by.

This was demonstrated at the Fuse festival which has thousands of attendees, and for the judges of Bloom at St. Michaels church. The RHS gave it a high recommendation:

*".....the self water planters and the hydroponic feature at St. Michaels church were great innovation's for both environment and education of the groups and community."*



## Visiting other sites:



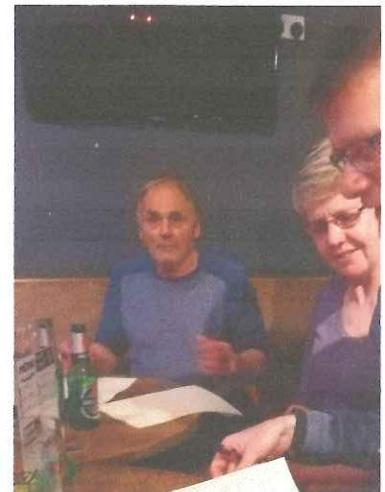
Forest Garden in Leicestershire

Mike's Community Garden and young Woodland in Yoxall

## Helping in the local Community and spreading the word:

Support Staffordshire Volunteers, 18 to 25 years of age and not in employment, were given jobs and encouragement at Dovehouse Community Garden over a couple of weeks in the Summer. Four Forest Harvest trustees are involved with the Dovehouse which moved into it's second year with the signing of the lease arranged by the Lichfield City Council.

Signing by the Dovehouse Committee of the Lichfield City Council Lease



After last year's success of demonstrating Forest Harvest's home crafted Coracles at the Alrewas Arts Festival, this year it was the turn of the Alrewas scouts who paddled on the mill stream having fun trying not to get swept under the bridge. Skills were soon honed!



Forest Harvest worked closely with the other groups from Lichfield in Bloom working towards and achieving another RHS gold.

Advice was given on developing a two-acre natural meadow in the Festival Gardens without the use of weed killers, soil disruption or introducing non-native species.

The fertility was reduced by cutting and removing the trimmings which helped the native wild plants to compete.

The RHS judges commented:

*"The new meadow at the festival gardens are well laid out from their concept and instigation, it offers visitor and resident the opportunity to view less formal wild species of flowers along side the softer grass such as bents and fescues, linked to this the historic beds and structures of the friary opposite the old library offer a another aspect of informal historic landscape."*



Just some of the wildlife that returned to the area as the meadow developed.



The BBC2 Lichfield episode of the Britain in Bloom series was enjoyed by organisers and volunteers from the various bloom groups including Forest Harvest a major contributor. Around 1million viewers watched when it was first screened in April 2019.

## Fund Raising:



Sales of plants, honey and other hand produced items were

sold at jumbles, festivals and during our own open days at Woodmill.

Tree stumps from the forest garden were sold as outdoor ornaments and seats.



A polytunnel and a greenhouse were donated from residents for use at the Dovehouse Community Garden, an octagonal greenhouse for use at the Mill.



The successful application to the South Staffordshire Community Energy Fund gave Forest Harvest £1,000 to further assess and develop new technology.

This really helped towards the solar panels and the use of alternative growing methods such as hydroponics and aquaponics.

The Lichfield BID contributed £3,200 to FH for planters at the 7 entrances to the City,

Running workshops at the Mill also helped to raise finance as well as spreading the word of sustainability.

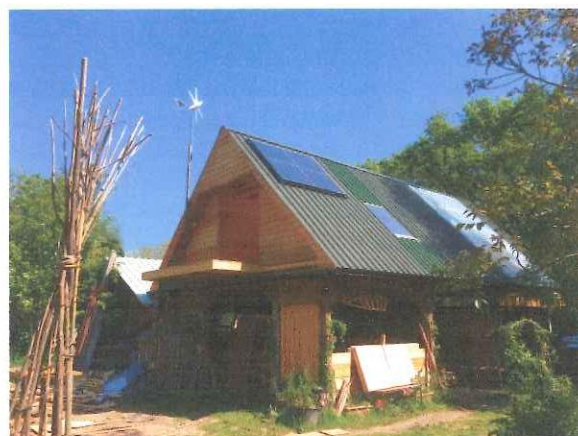
This bee awareness course for potential new beekeepers used the newly refurbished upstairs woodstore which provides a warmer and dryer space for winter workshops.



Another development in 2019 is this observatory for the wildlife enjoying the tree canopy, and to see the birds and bats enjoying feeding along a glade highway.

Further building development is planned so more courses can be run over the winter when the weather is bad.

Also new this year is a wind turbine and roof solar panels demonstrating new technology for sustainable living and a greenhouse to extend the growing season.



The trustees have met the targets set out in year 3 of the strategic plan except for the arts programme which has been delayed because of a delay in the building work. This work has been re-scheduled for year 4 when the building will be completed as a safe venue for all-year-round workshops and as a building to demonstrate practices to live sustainably.





CHARITY COMMISSION  
FOR ENGLAND AND WALES

FOREST HARVEST

1172085

## Receipts and payments accounts

CC16a

For the period  
from

01/10/2018

To

30/09/2019



### Section A Receipts and payments

	Unrestricted funds to the nearest £	Restricted funds to the nearest £	Endowment funds to the nearest £	Total funds to the nearest £	Last year to the nearest £
<b>A1 Receipts</b>					
Course Fees	170	-	-	170	65
Donations	-	-	-	-	1,528
Product Sales	49	-	-	49	146
Open Days	50	-	-	50	100
festivals	150	-	-	150	134
Grants	4,200	-	-	4,200	2,100
	-	-	-	-	-
	-	-	-	-	-
<b>Sub total (Gross income for AR)</b>	<b>4,619</b>	<b>-</b>	<b>-</b>	<b>4,619</b>	<b>4,073</b>
<b>A2 Asset and investment sales, (see table).</b>					
	-	-	-	-	-
	-	-	-	-	-
<b>Sub total</b>	<b>-</b>	<b>-</b>	<b>-</b>	<b>-</b>	<b>-</b>
<b>Total receipts</b>	<b>4,619</b>	<b>-</b>	<b>-</b>	<b>4,619</b>	<b>4,073</b>
<b>A3 Payments</b>					
Rent	1	-	-	1	1
Insurance	280	-	-	280	230
IT	43	-	-	43	38
Professional Membership	-	-	-	-	32
Grey water collection	24	-	-	24	48
Repairs	319	-	-	319	1,517
Donations	22	-	-	22	108
Horticulture	43	-	-	43	75
grant expenditure	4,184	-	-	4,184	1,870
<b>Sub total</b>	<b>4,916</b>	<b>-</b>	<b>-</b>	<b>4,916</b>	<b>3,919</b>
<b>A4 Asset and investment purchases, (see table)</b>					
	-	-	-	-	-
	-	-	-	-	-
<b>Sub total</b>	<b>-</b>	<b>-</b>	<b>-</b>	<b>-</b>	<b>-</b>
<b>Total payments</b>	<b>4,916</b>	<b>-</b>	<b>-</b>	<b>4,916</b>	<b>3,919</b>
<b>Net of receipts/(payments)</b>	<b>- 297</b>	<b>-</b>	<b>-</b>	<b>- 297</b>	<b>154</b>
<b>A5 Transfers between funds</b>	<b>-</b>	<b>-</b>	<b>-</b>	<b>-</b>	<b>-</b>
<b>A6 Cash funds last year end</b>	<b>439</b>	<b>-</b>	<b>-</b>	<b>439</b>	<b>-</b>
<b>Cash funds this year end</b>	<b>142</b>	<b>-</b>	<b>-</b>	<b>142</b>	<b>154</b>

## Section B Statement of assets and liabilities at the end of the period

Categories	Details	Unrestricted funds to nearest £	Restricted funds to nearest £	Endowment funds to nearest £
<b>B1 Cash funds</b>	Cash & Bank	142	-	-
		-	-	-
		-	-	-
	<b>Total cash funds</b>	142	-	-
	(agree balances with receipts and payments account(s))	OK	OK	OK
		Unrestricted funds to nearest £	Restricted funds to nearest £	Endowment funds to nearest £
<b>B2 Other monetary assets</b>		-	-	-
		-	-	-
		-	-	-
		-	-	-
		-	-	-
		-	-	-
		-	-	-
<b>B3 Investment assets</b>		Fund to which asset belongs	Cost (optional)	Current value (optional)
			-	-
			-	-
			-	-
			-	-
			-	-
<b>B4 Assets retained for the charity's own use</b>		Fund to which asset belongs	Cost (optional)	Current value (optional)
	<b>7 Self Watering Planters</b>	2835	-	-
			-	-
			-	-
			-	-
			-	-
			-	-
			-	-
			-	-
			-	-
<b>B5 Liabilities</b>		Fund to which liability relates	Amount due (optional)	When due (optional)
			-	
			-	
			-	
			-	
			-	

Signature	Print Name	Date of approval
	HELEN TREKER	9-11-19
	ANTHONY JONES	9-11-19

Signed by one or two trustees on behalf of all the trustees