



London
North West
Healthcare
Charity

Annual review 2018/19





London North West Healthcare Charity

Enhancing the lives of our patients and staff

Our vision is to make a positive and lasting impact on the lives of our patients, their families and the local community by supporting our incredible NHS staff to deliver the best healthcare possible.

Contents

About us	4
A year of achievement	5
Our biggest investment in recent times	6
Making our wards dementia friendly	7
The Forget Me Not Appeal	8
Research and clinical	9
Grants	11
A busy year	12
Thank you	15
Reference and administrative details	16
Our structure, governance and management	17
Financial review	19
Policies and procedures	20
Plans for the future	23
Annual accounts	28

A warm welcome

It has been an exciting year for London North West Healthcare Charitable Fund.



We have been busy laying the foundations for our fundraising work, which helps make a difference on our wards, in our research and most of all, to the many thousands of patients our hospitals treat every year.

And we couldn't do that without you.

Our supporters are extraordinary. They give their time, money and lots more to help the million people across North West London, in and out of hospital.

We are extremely grateful for the many donations we have received this year. You can read about many of the projects these are funding within this annual review.

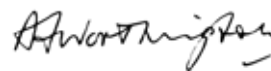


Over the past 12 months, we have concentrated our efforts on creating a more proactive fundraising function. We've recruited new staff to our team and a great deal of work has been going on behind the scenes to activate our fundraising. We've introduced new policies and procedures and launched a brand new, user friendly website and online donation facility to encourage our supporters to get involved, make a donation and find out more about us.

New promotional materials are helping us raise awareness of our charity and ensure fundraisers get the most out of their events; there are new leaflets and guides to fundraising, donation tins, posters, pop ups and branded t-shirts. Our new donor database is helping us keep in touch with our supporters.

Working hand in hand with the hospital's clinical strategy and transformation team, we propose to develop a 5 year business plan on how we intend to support our hospitals in 2019/20 and beyond.

Thank you for supporting our charity.



Peter Worthington

Chairman
London North West University
Healthcare NHS Trust

About us

We are London North West Healthcare Charitable Fund.

We are the official dedicated charity for London North West University Healthcare NHS Trust, raising vital funds for Northwick Park, Central Middlesex Hospital and Ealing Hospital, as well as local community services in Brent, Ealing and Harrow.

With your help, we are able to support our amazing staff to deliver the best possible healthcare for our patients by funding innovation, new facilities, medical research and cutting edge technology above and beyond that made possible by standard NHS funding.





A year of achievement

This annual review provides a guide to our achievements and performance in 2018/19.

London North West Healthcare Charitable Funds objectives are to support London North West University Healthcare NHS Trust by providing funds to benefit patients and staff by funding complementary equipment and services for which the organisation are unable to provide through NHS exchequer sources.

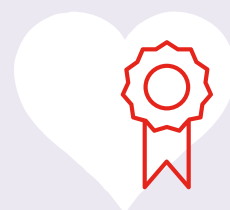
When considering which projects we undertake, our corporate trustee board and, particularly, the members of the Charitable Fund Management Committee have referred to the Charity Commission's general guidance on public benefit and ensure that the projects are in line with our charitable aims and objectives. In 2018/19 the charity's public benefit can be noted through the funding of £2.1m on additional items of equipment purchased for Trust wards and departments, funding external educational courses and seminars to keep healthcare professionals up to date with the latest techniques, assisting with fundraising projects relating to health and welfare of the general public and providing staff with amenities such as staff room provisions, staff

recognition awards which promotes staff motivation, encourages a better working environment and improves staff morale.

London North West University Healthcare NHS Trust operates an equal opportunities policy which extends to the charity. The charity benefits all members of the general public regardless of their ethnicity, religion, disability, colour, race, sex and sexual orientation.

London North West Healthcare Charitable Fund is committed to working alongside London North West University Healthcare NHS Trust as an addition to the service which they provide. To maximise the benefit to the general public the charity acts within the guidelines and policies of London North West University Healthcare NHS Trust.

The charity has achieved this by the donations received by you, our donors and supporters. You will see from our highlights below how our charity has made a difference.



Our biggest investment in recent times

£1.5m for new vascular centre

London North West Healthcare Charitable Fund has made its single, largest donation in recent times - £1.5 million to fund a new state of the art Vascular Unit at Northwick Park, combining vibrant, modern design with cutting edge, innovative healthcare.

Vascular conditions affect the arteries and veins that carry blood around the body, impacting on a variety of conditions such as strokes, diabetes-related diseases and aneurysms.

The charity funded £1.3m towards the cost of the unit with a view to funding the remaining £200,000 for the development by December 2019.

The West London Vascular and Interventional Centre is the first dedicated treatment centre in West London with a catchment area covering Brent, Ealing, Harrow and Hillingdon whose populations experience higher than average levels of vascular disease.

The new unit revolutionises the way patients in north London are treated and comprises a welcoming reception area, spacious waiting room, eight adjoining 'Jack and Jill' clinical and consultation rooms, treatment rooms and screening area, all designed for patients at every stage of their treatment and recovery.

It includes the most advanced radiology equipment and has been designed to be dementia friendly.

Professor Martin Malina, oversaw the development of the centre. He said: "This centre is the first place in the UK to bring vascular surgeons and interventional radiologists together, providing a one stop service for patients under one roof."

Jackie Trant, Vascular Nurse Practitioner, added: "This concept of fully integrated care is a pioneering approach

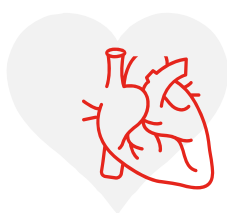


and we are delighted that thanks to charitable funding this new unit is transforming patient care."

Patient Gordon Sheridan, 67, from Pinner, has been treated at the vascular centre. A keen horse rider, he suffered crippling legs pains due to constricted arteries, which made it difficult to walk. He had not been able to ride for several years.

Gordon said: "It was incredibly painful to walk any distance."

Gordon underwent a minimally invasive procedure that involved inserting a wire into his groin to deliver two mesh tubes, called stents, into the arteries at the top of each leg.



Dr Lorenzo Patrone, a Vascular and Interventional Radiologist at the West London Vascular and Interventional Centre, inserted the stents to force the arteries back open, improving the blood flow to Gordon's legs. He said:

"The surgery was completed within a month from referral to treatment and we're delighted that Gordon is now fully recovered and able to walk and ride, with no trace of the disease."

Sharing expertise

Consultants at the centre are also sharing their expertise with medical professionals around the world and with patients looking for a second opinion after being given an initial diagnosis of amputation.

They are using social media to connect and share information and are regularly contributing to Vascupedia - a 'Wikipedia' for vascular diseases and treatments. So far, 22,000 unique visitors have engaged with the centre from 131 different countries.

Dr Lorenzo Patrone added: "It's very effective in educating vascular specialists all around the world to new technologies and treatment options.

"We're also in the process of installing cameras in our theatre, allowing us to record cases and live streaming operations at international congresses or vascular webinars."

As at 31st March the charity funded £1.3m towards the cost of the unit with a view to funding the remaining £200,000 for the development by December 2019.

Making our wards dementia friendly and the Forget Me Not Appeal

Around 850,000 people in the UK are living with dementia. One in 14 of us over 65 will develop the condition, with dementia affecting one in six people over the age of 80.

So it is of little surprise that supporting people with dementia is one of the biggest challenges the NHS faces. London North

West Healthcare Charitable Fund is playing a vital role in improving dementia care across North West London.

Dementia friendly ward

London North West Healthcare Charitable Fund contributed vital funds to create a dementia friendly ward at Northwick Park, featuring non-slip, vinyl wooden effect flooring to help patients feel more safe and secure. Door frames in bays and side rooms have been painted in pastel colours to create clear, welcoming entrances, while specially designed signage has helped reduce confusion, isolation and anxiety. The use of different colours on the ward has created a comforting atmosphere overall.

Dementia Team Forget Me Not Appeal

A group of nifty knitters, including veterans and enthusiastic newcomers, produced a woolly supply of Forget Me Not Flowers to raise funds for the Trust's dementia teams and awareness of the condition.



Led by Dementia Lead Emma Smith, London North West Healthcare Charitable Fund was proud to support the hospital's Dementia Champions who raise awareness how dementia can affect memory, language, behaviour and cognitive abilities. The knitted flowers enabled the team to raise funds for sundry items for patients.

Wendy George, Head of London North West Healthcare Charitable Fund said:

"The dementia friendly ward and Forget Me Not Appeal would not have been possible without the generosity of our supporters. The dementia team are amazed at the support they have received and we would all like to thank everyone who has got behind this project."

Enhancing our environment

Medical equipment

Donations are often used to provide pieces of equipment which improve the care that nursing staff can provide.

We've funded many items to enhance the environment and improve medical care at London North West University Healthcare NHS Trust.

The total cost of medical equipment donated to London North West University Healthcare NHS Trust in 2018/19 was £139,486.

£49,596 was spent on furniture for wards, including 17 specialist high back chairs for elderly and palliative care patients at Central Middlesex and Ealing Hospitals, 25 stacking chairs for visitors and two meeting style tables for the education room at Meadow House hospice, new bench style seating for the

children's outpatients department at Northwick Park and four reclining chairs for mothers nursing their babies in the neonatal unit at Northwick Park.

New medical equipment included a new piece of technology for physiotherapists at Northwick Park, which uses shock wave therapy to speed up the tendon healing process for patients undergoing intensive rehabilitation.

Meanwhile, Northwick Park's cardiac department did not have a dedicated echo machine for complex cases. A generous £5,000 patient donation has made possible a hand held echo machine for complex cardiac emergency cases, which prompts early diagnosis and improves angiography diagnostic services and patient outcomes.

Physiotherapist Andre Nolan said: **"Thanks to charitable donations, we have been able to buy new equipment to improve our service so that patients don't have to go elsewhere for treatment. We offer a wide range of rehabilitation techniques on site, which is much better for patients and staff."**



Research and clinical

Supporting research

In 2015, the Charitable Fund Management Committee agreed to support a five-year programme of clinical and health services research in rehabilitation at Northwick Park's Regional Hyper Acute Rehabilitation Unit. The charity invested £268,550 to support four research projects, led by Professor Lynne Turner-Stokes, DM FRCP MBE.

The programme, which started in November 2016, is focussing on the needs of patients with complex disabilities and their carers. It will deliver:

- A UK-wide database for the audit of rehabilitation service
- A data registry for patient with prolonged disorders of consciousness

- The dissemination of key research findings through publication in peer reviewed journals, lectures and conference abstracts



- The implementation of research findings through policy and service development, including the further development of integrated care pathways and national clinical guidelines.

Key achievements in 2018/19 included:

National clinical audit of specialist rehabilitation following major injury

The delivery of a final report for National Clinical Audit of Specialist Rehabilitation following major injury which was commissioned by the Healthcare Quality Improvement Partnership and approved by National Health Service England for publication in April 2019.



The report identified gaps in services, but also proposed solutions to help improve the quality of rehabilitation for patients following major trauma.

Key findings in the report included:

- A shortfall of approximately 330 specialist (Level 1 and 2) rehabilitation beds in England for major trauma alone.
- Specialist rehabilitation is highly cost-efficient for patients following major injury leading to mean net estimated life-time savings of just over £500,000 per patient. The net savings from this small national one-year cohort alone amounted to £582 million.
- The cost of providing the shortfall of 330 beds would be £53 million, but even after this investment, specialist rehabilitation would still generate net savings in excess of £500 million recurring annually.

National clinical guidelines for prolonged disorders of consciousness (PDOC)

This year, Professor Turner-Stokes led the Royal College of Physicians Guidelines Development Group (GDG) to update the national clinical guidelines for PDOC, based on consensus and review of both medical literature and case law. The final draft is currently under

review by the Royal College of Physicians Council and publication is expected in early 2020. The guidelines have recommended the development of a national clinical register for patients in PDOC to be included in the UK Rehabilitation Outcomes Collaborative (UKROC) database. UKROC was set up by the Regional Rehabilitation Unit at Northwick Park in 2008 through a Department of Health Programme Grant to develop a national database for collating case episodes for inpatient rehabilitation.

UKROC database and other international collaborations

The Regional Rehabilitation Unit at Northwick Park continued to work with colleagues in Australia and New Zealand to extend developments from the UKROC database internationally. Working with centres in Melbourne and Perth, they have adapted the costing algorithm within the Northwick Park Dependency and Care Needs Assessment for use in the Australia healthcare system using standardised national costs.

Professor Lynne Turner-Stokes said: **“These programmes demonstrate that the research we do here in Northwick Park has international applicability to improve the quality of life for severely disabled patients, not only in the UK but in other countries as well.”**

Grants

Fundraising

Joy Family grant

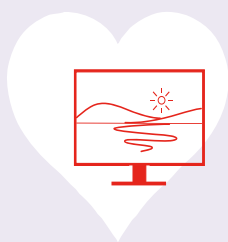
The Joy Family Charitable Trust has awarded an amazing £20,433 to the Infectious Diseases Unit at Northwick Park.

The donation will fund 16 televisions for each isolation room, including the waiting area in Elgar Ward and will make a huge difference to patients who need to be treated in isolation, often for long periods of time.

Most patients treated in the Infectious Diseases Unit are elderly and isolation can bring negative emotional and psychological effects.

Mrs Al-Makhadi is an 85 year old patient on Elgar Ward. Although she enjoys her spacious room and view outside of her window, she admitted the new TV takes her mind off being in hospital. She said: "There are so many programmes to watch that I am happy all day and the time flies by. In the past, if you wanted to watch TV you had to pay for it, so this is wonderful. I'm quite sure that the other patients feel the same, a very big thank you to those who made it possible."

Seventy year old Mr Young was admitted to Elgar Ward after being diagnosed with bacterial infection *Clostridium difficile*. Before this, he was on Crick Ward for several days, where there was little to alleviate the boredom. He confessed to feeling lonely and depressed, especially when his wife went home after visits. He said: "The televisions are a godsend – I can find out what's happening by watching the news and even access teletext! The nights are easier, as I have some noise in the background to keep me company."



Geraldine Dammen, Trust and Foundations Fundraising Manager said: **"As a small, local Charity, every single penny we receive makes a huge difference to the lives of our patients and staff. We are extremely grateful for the amazingly generous donations from The Joy Family Charitable Trust and Oshwal Association of the UK. We hope to work with them again in the near future."**

Oshwal Association grant

Meanwhile, thanks to a generous £13,925 grant from Oshwal Association of the UK (OAUk), a new haemodialysis machine was purchased for Northwick Park's Renal Unit.

Haemodialysis involves diverting blood into an external machine, where it's filtered before being returned to a patient whose kidneys are not working properly.

Renal Consultant Neil Duncan says: "We cannot thank OAUk enough for their amazing donation. OAUk has shown a deep interest in trying to give patients the very best possible."

The grant has also funded a bariatric chair. Feedback from renal patients includes:

"I could not make myself comfortable before. Dialysis is hard enough, so thank you so much for making this change possible. It has made all the difference and makes it easier for me during treatment."

"I can stretch my legs out."

"The chair is so snuggly."



A busy year

Our supporters and fundraisers chose to donate their time and money in a variety of ways, and no matter how big or small, every contribution counts. Here are some of the amazing things they have done to help this year.

The great outdoors

Patient welfare

Meadow House Hospice has been providing specialist palliative and end-of-life care to residents in Ealing and Hounslow for over 30 years. The hospice receives charitable support to fund the much needed extras for patients.

Why was it needed?

The Meadow House Hospice garden was pleasant but mostly inaccessible and unsuitable for wheelchair users. Feedback from patients, family and friends expressed an interest in seeing the garden improved.

Such a difference


Thanks to generous donations from our donors and a £12,000 grant from Tesco's Bag of Help grant giving scheme, a new outdoor space has been created as a therapeutic retreat - quiet, peaceful and sheltered, surrounded by bushes and shrubs, with a pergola, garden building and water feature.

New paths make it wheelchair accessible and trees and flowers are planted on the other side of the hospice where patient rooms do not look out onto the main garden.

The family of a patient said: "It looks beautiful. The new seated area is a great space where we can relax as a family and I know that we will use the garden a lot in the coming weeks."



Jimmy Mir, Meadow House Hospice's Service Improvement Manager added: **"The garden at Meadow House has always been at the heart of our hospice. Over the years, it had been well used by patients, visitors and staff, but had grown tired-looking. Refurbished paths give better access to wheelchair users and the large gazebo is a perfect place for quiet reflection. These improvements will enhance the lives of all who visit for many years to come. We are extremely grateful to Tesco for their support."**

 **A big thank you to Tesco Bags of Help for contributing £12,000 towards the project, which was completed in June 2019.**



Family room gets a makeover

Fundraising

Patients with leukaemia and their families and friends are delighted with a new family room, which has undergone a fabulous makeover.

Long-standing supporters of The Richard Thomas Leukaemia Fund donated £5,000 which funded new furniture, hot water dispenser and refreshments in a comfortable and relaxing setting away from the busy ward.

The Richard Thomas Leukaemia Fund was set up by Richard's family and friends in his memory in 1997. Since then, the fund has supported haematology services at Northwick Park in appreciation of the care Richard received. The recently refurbished haematology day-care department has been renamed The Richard Thomas Unit in honour of the fund's outstanding contribution.

Richard's sister, Lucy, said: "We are delighted to support the work of the

haematology team, who do such amazing work to help patients in their battle against leukaemia. We spent a lot of time in the hospital when Richard was poorly and it would have been helpful to us, as a family, to have had somewhere quiet to take a break."

Simon Pitts, Community Fundraising Manager added: **"The Richard Thomas Leukaemia Fund has supported Northwick Park for more than 20 years. We are extremely grateful for this continued support."**



Funding degrees for nurses

Training and education

Advanced nurse training is increasingly important with bowel cancer now ranking the fourth most common cancer in the UK.

We are delighted to have supported a new bespoke education programme for nurses in London North West University Healthcare NHS Trust.

This programme was needed because many nurses do not hold a degree and there are no specialist degree level pathways available in the UK for nurses working in this speciality. The new degree course in gastrointestinal care offers nurses a degree level award pathway, accredited by Birmingham City University.



As a result, 20 funded places were taken up for bespoke training with two nurses receiving 60 credit awards towards their degrees – one for BSc Gastrointestinal Care and one for Advanced Diploma Professional Studies Gastrointestinal Care.

London North West Healthcare Charitable Fund is proud to help the team fulfil their objectives to improve patient care and outcomes, increase the number of nurses with access to a degree, enable clinical staff to better address a range of complex issues and increase staff retention.

Jennie Burch, Head of Gastrointestinal Nurse Education, RN, MSc, PG Cert HE, BSc (Hons) said: **"We are delighted and would like to thank London North West Healthcare Charitable Fund for supporting our nurses with this further training. Patient care is our priority and we want to ensure our nurses have access to the best training."**

London North West Healthcare staff put their best foot forward

Fundraising

Summer Stride for 5

The idea for the Summer Stride for 5 came from a theatre matron working at Central Middlesex Hospital's Ambulatory Care and Diagnostic Centre (ACAD) who wanted to mark the 20th anniversary of the centre with a staff sponsored walk.

Word about the event spread and around 100 staff across our hospitals signed up and took part in the five mile walk to raise money for wards and departments.



The NHS staff pounded the streets from Northwick Park in Harrow to Central Middlesex in Park Royal, London on 1st June 2019 and raised over £4,000.

Events Manager Priti Patel explained: **"We set a target for ourselves of £3,000 but we raised just over £4,000. Our aim is to make the event even bigger and better in 2020/21 by inviting local people to join us."**

Recognising our staff

Staff welfare

We honoured all the Trust's staff – from nurses, volunteers and administrators to physiotherapists, porters and doctors - at the annual Staff Excellence Awards.

Fourteen awards were presented during the ceremony, which was funded by our charity as well as external sponsors.

This year was the biggest yet, with hundreds of nominations received from patients, carers, family and staff.

Among the winners were the respiratory team at Central Middlesex Hospital and Ward 3 North at Ealing Hospital, named Team of the Year.

A special lifetime achievement award was made to A&E Consultant Dr John Knottenbelt at Northwick Park. Congratulations to all the winners.





Thank you

We are grateful for the many generous donations which have been received this year, some of which are acknowledged here:

- Angelica Bush who took part in The Wolf Run - Cardiovascular Centre, Northwick Park.
- Pupils and Staff at Twyford Church of England High School, Ealing - Meadow House Hospice, Ealing Hospital.
- Transport for London cake bake sale and a 12-mile night walk across London bridges - Neonatal Unit, Northwick Park.
- Harrow Technology Company Talen Team Santa Run - Jack's Place, Northwick Park.
- EM Collins and Co Solicitors donation - Jack Place, Northwick Park.
- Pupils and Staff at Glebe Primary School, Harrow - Jacks Place, Northwick Park.
- Bakkavor, Park Royal, London cash donation and a donation of toys - Rainbow Children's Centre, Central Middlesex Hospital.
- Access Self Storage and Westside Radio donation of Easter eggs and toys - Jack's Place, Northwick Park.
- Harrow Heart Support Group - Cardiovascular Centre, Northwick Park.
- Pupils and Staff at St Bernadette Catholic Primary School, Harrow - Jacks Place, Northwick Park.
- Jubilee Road Garden Society, Perivale Middlesex - Meadow House Hospice, Ealing Hospital.



If you would like more detail on our expenditure, the impact we have made and where our money has been spent you can view our Achievements and Performance at lnwhcharity.org.uk or contact the fundraising team on 020 8869 3367.

Reference and administrative details

The London North West Healthcare Charitable Fund, registered charity 1083634, was entered on the Central Register of Charities on 1 April 2015.

London North West Healthcare Charitable Fund has a total of 246 funds as at 31 March 2019. Details of the types of funds held are shown in

the notes to accounts. The material funds are disclosed separately.

London North West University Healthcare NHS Trust is the corporate trustee of the London North West Healthcare Charitable Fund.

The London North West University Healthcare NHS Trust Board has the responsibility of ensuring that London North West University Healthcare NHS Trust fulfils its duties as the Corporate Trustee.

The London North West University Healthcare NHS Trust Board are listed below:

Executive Directors			
Jacqueline Docherty*	Chief Executive	Claire Gore	Director of Human Resources
Arshiya Khan	Chief Operating Chief Officer	Simon Crawford	Director of Strategy
Amanda Pye	Chief Nurse (to 28/02/19)	Sandra Adams*	Director of Corporate Affairs (to 22/02/19)
Martin Kuper*	Medical Director	David Searle	Director of Corporate Affairs (from 02/04/19)
Jon Bell*	Chief Financial Officer (to 16/08/19)	Mark Trumper	Director of Estates and Facilities (from 01/02/19)
Lisa Knight	Chief Nurse (from 29/04/19)	Barbara Beal	Interim Chief Nurse (from 03/07/18 to 17/05/19)
Gary Munn	Acting Director of Estates and Facilities (from 01/01/08 to 31/01/19)	Bimal Patel*	Interim Chief Financial Officer (from 19/08/19)

Non-executive Directors			
Peter Worthington	Chairman	Ruwan Weerasekera*	Non-Executive Director (to 31/03/19)
Janet Rubin	Non-Executive Director	Desmond Johnson*	Non-Executive Director (from 01/10/18)
Andrew Farrell	Non-Executive Director	Neville Manuel*	Non-Executive Director (from 01/06/19)
Andrew van Doorn*	Non-Executive Director	David Moss	Non-Executive Director (from 01/08/19)
Vineta Bhalla*	Non-Executive Director	David Taube	Non-Executive Director

*Members of London North West Healthcare Charitable Fund Management Committee.

Principle Office

Charitable Fund Office

Level 7, Finance Department
London North West
University Healthcare NHS
Trust
Northwick Park & St Mark's
Hospital
Watford Road
Harrow
Middlesex
HA1 3UJ

Professional Advisors

Bankers

Lloyds Bank
286 Station Road
Harrow
Middlesex
HA1 3EB

Investment Managers

CCLA Investment
Management Limited
COIF Charity Funds
85 Queen Victoria Street
London EC4V 4ET

Solicitors

Hempsons LLP
100 Wood Street
London EC2V 7AN

Auditors

Grant Thornton UK LLP
30 Finsbury Square
London
EC2A 1AG

Our structure, governance and management

The London North West Healthcare Charitable Fund was established by Trust Deed on 1 April 2015.

The charity is registered under an 'umbrella' arrangement where the registered charity is London North West Healthcare Charitable Fund and within the remit of the registered charity there are number of designated ward and department charitable funds.

The funds are managed on a day to day basis within the Trust's Standing Financial Instructions and London North West Charitable Fund Financial Guidelines and Procedures and the power of delegated authority set by the Corporate Trustee.

For further details on LNWH Charitable Fund charity's "umbrella" arrangement visit www.gov.uk/government/organisations/charity-commission

Corporate Trustee

London North West University Healthcare NHS Trust is the corporate trustee of the London North West Healthcare Charitable Fund.

The London North West University Healthcare NHS Trust Board has the responsibility of ensuring that London North West University Healthcare NHS Trust fulfils its duties as the Corporate Trustee in managing the charity.

The members of London North West University Healthcare NHS Trust Board who act on the behalf of the corporate trustee are recruited in accordance with NHS policy on the recruitment of directors.

Corporate Trustee workshops for members of London North West University Healthcare NHS Trust Board will be organised in 2019/20. These will bring members up to date on their responsibilities and integration of the governance prerequisites of the charity and the charity's fundraising function.

Related parties

All members of London North West University Healthcare Trust NHS Board gave their time freely and no remuneration was paid to the London North West University Healthcare NHS Trust Board in 2018/19. Details of related party transactions can be found in note 18 of the accounts.

London North West University Healthcare Trust Board, on the behalf of the corporate trustee, delegates responsibility for managing the funds to London North West Healthcare Charitable Fund Management Committee.

The London North West Healthcare Charitable Fund Management Committee have delegated responsibility to make and monitor arrangements for the control and management of the London North West Healthcare Charitable Fund and mandate to provide oversight, scrutiny and challenge to the growth and operation of the charity.

This includes:

- Making sure that best practice is followed when managing the charitable
- Funds and all the legal responsibilities are fulfilled.
- Keeping London North West University Healthcare NHS Trust Board
- Informed on the performance, activity and any risks faced by the charity.
- Monitoring, controlling and managing the use of charitable funds.
- Developing and championing a strategy for charity's fundraising.
- Reviewing London North West Healthcare Charitable Fund annual Accounts and trustees report and audit report before they are submitted to London North West University Healthcare NHS Trust Board.



The members of London North West Healthcare Charitable Fund Management Committee are as follows:

London North West Healthcare Charitable Fund Management Committee Members	
Vineta Bhalla	Committee Chair
Jacqueline Docherty	Chief Executive Officer
Andrew van Doorn	Non-Executive Director
Ruwan Weerasekera	Non-Executive Director (to 31/03/19)
Jon Bell	Chief Financial Officer
Bimal Patel	Interim Chief Financial Officer (from 19/08/19)
Neville Manuel	Non- Executive Director (from 1/06/19)
Professor Des Johnson	Non-Executive Director (from 01/10/18 to 31/03/19)
Sandra Adams	Director of Corporate Affairs (to 22/02/19)
Martin Kuper	Medical Director

Partnership working and networks

London North West Healthcare Charitable Fund is a member of NHS Charities Together formally known as the Association of NHS Charities. It is a collective group of NHS charities who together provide mutual support and information on issues related to NHS charities.

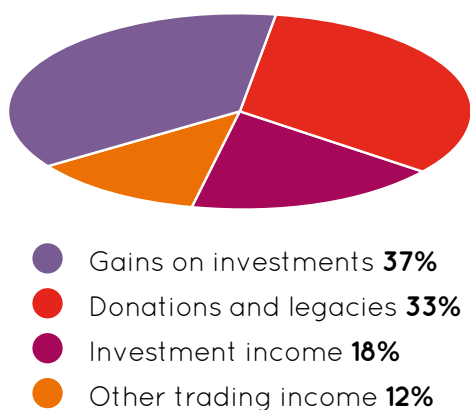
Financial review

The London North West Healthcare Charitable Fund received total income of £1.021m as at 31 March 2019, overall a slight decrease of 2.58% on same period last year. Income from the provision of training, supporting internal courses was down but there was a 5% increase in donations and legacies received from the public.

Investment income for 12 months ended 31 March 2019 was £281,000 up 1% on last year (2017/18: 279,000) and the net gains on investments totalled £513,000.

The pie chart below shows our three main sources of income in terms of percentage.

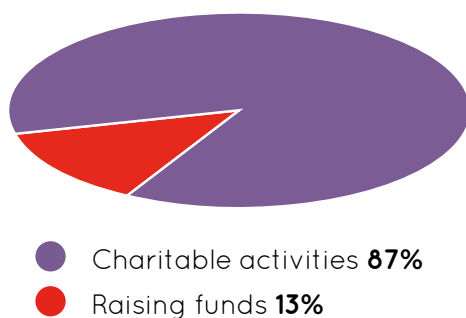
Income 2018/19



The charity's expenditure in 2018/19 totalled £2.513m (2017/18: £1.553m).

The pie chart below shows the largest spend areas in terms of percentage.

Spend 2018/19



The cost raising funds totalled £324,000 (2017/18: £223,000) for 12 months ended 31 March 2019. The increase was attributed to the appointment of fundraising staff within charity's fundraising function and associated fundraising cost relating to charity merchandise and branding, website maintenance and organisation membership fees to charity groups and regulatory organisations.

Charitable activities in 2018/19 totalled £2.184m (2017/18: £1.330m) includes expenditure categories totalling £1.986m (2017/18: £1.154m), the charity's administration support costs £198,000 (2017/18: £171,000). Expenditure on other costs relates to the fee for carrying out the charity's annual audit this totalled £5,000 (2017/18: £5,000). Note that the support costs are apportioned across each area of activity and is included in expenditure categories totals.

At 31 March 2019, the reserves of London North West Healthcare Charitable Fund decreased by £979,000 to £7.012m. Of the £7.012m, £4.651m is held in restricted funds and £2.361m in unrestricted funds.

Funds

Unrestricted funds

The unrestricted funds are general funds with no restriction on how they should be spent. LNWH Charity's unrestricted fund balance as at 31 March 2019 is £2.361m. The balance of the charity's reserve is the total balance of the charity's unrestricted funds. Details of the funds is shown in note 16.2.

Restricted funds

Restricted funds balance at as 31 March 2019 is £4.651m are for specific purposes and are allocated to support a variety of wards and departments. A full list of funds are available on request from the charity. Details of the funds are shown in note 16.1.

The full set of charity's financial accounts can be found on page 28.

Policies and procedures

Fundraising

London North West Healthcare Charitable Fund does not use professional fundraisers or involve commercial participators to organise fundraising activities on its behalf. There have been no complaints in relation to its fundraising activities in 2018/19.

London North West Healthcare Charitable Fund is registered with the Fundraising Regulator and adheres to the independent regulators Code of Fundraising Practice for the United Kingdom which ensures that fundraising remains respectful, open, honest and accountable to the public as well as the Charity Commission of England and Wales guidelines. Failures to comply with fundraising standards will result in the charity being reported to the Fundraising Regulator.

As a result LNWH Charitable Fund has updated its fundraising guidance and working practises. The charity has yet to undertake direct marketing but this will be carried out by the fundraising section to ensure that the charity is not unreasonably intrusive.

Safeguarding

London North West University Healthcare NHS Trust has implemented a Safeguarding Children's and Adults policy. All staff employed at LNWH NHS Trust are obliged to undertake mandatory safeguarding children and adults training to ensure they are aware of their part in protecting vulnerable people and the wider public by preventing, identifying and responding to abuse and exploitation.

Our charity staff and all Trust board members have undertaken LNWH NHS Trust safeguarding adults and children training and in addition to this a number of additional safeguarding policies related to the charity's activities have been introduced by London North West Healthcare charitable fund.

General Data Protection Regulation (GDPR) Policy

Our GDPR policy describes what rights that our donors have in relation to their personal data being held by the charity. How the charity collects the data, processing the data and how we handle the donors data fairly lawfully and transparent. The charity must obtain express consent from the individual donor or support to contact them for direct marketing purposes. The charity's policy is not to collect more personal data about someone than would reasonably be needed for the particular purposes it was collected for and maintain data security by protecting the confidentiality, integrity and availability of personal data.

Privacy policy

The London North West Healthcare Charitable Fund Privacy Policy includes the charity's website Cookie policy, which tells individuals about the personal data the charity may collect and use in relation to its fundraising activities. It also provides information about the legal basis on which we process personal data, how long we hold it for and certain legal rights you have.

Data Protection Impact Assessment for the charity and fundraising activities

Data Protection Impact Assessment (DPIA) is a tool that is used to identify the most effective way for organisations to comply with their data protection obligations and meet individuals' expectations of privacy.

London North West Healthcare Charitable Fund DPIA policy will help the charity to:

- Assess and reduce any privacy risks that may arise in relation to the fundraising and charitable projects that involve the processing of personal data relating to identifiable individuals; and
- Help the charity to design more efficient and effective processes for handling personal data in respect of these projects.



London North West Healthcare Charitable Fund website terms and conditions

The terms and conditions for the access and use of funds is available on the London North West Healthcare Charitable Fund website.

Data retention policy

The London North West Healthcare Charitable Fund data retention policy has been developed and is designed to ensure all the charity's business or operational information in connection with its fundraising activity is retained only for as long as it is needed.

Fundraising activity in 2018/19 has revolved around creating awareness and raising the charity's profile. The charity is currently developing a five year business plan for 2020 onward to setting targets with a view of benching our activity with our peers through NHS Charities Together.

Risk Management

London North West Healthcare Charitable Fund has adopted a framework under which to identify and monitor risks.

The charity carries out formal risk assessment by way of a risk register.

The risk register is a review of the charity's existing and proposed operational, governance and management, financial and legal and regulatory activities and ensures that new risks are identified and existing recorded risks are revised or removed if no longer applicable.

The Trust Board, on behalf of corporate trustee, delegates the charity's major strategic and operational risks review to London North West Healthcare Charitable Fund Management Committee although the Trust Board retains overall responsibility for the charity's risk register.

The risk management register was presented to the London North West Healthcare Charitable Fund Management Committee in February 2019.



Fundraising

Best practise, charity law and government policy and regulations is considered a major reputational risk which can result in a breach of Trust or loss of registration. The risk is mitigated by implementing fundraising policies and procedures including GDPR Policy and Data protection policy, having audited accounts procedure, submitting audited accounts and report to the Charity Commission on time, reviewing and updating the charity's literature and webpage and membership to NHS Charities Together who provides additional updates on policy changes.

Investment returns

Additional income is raised from investing cash balance and the loss of investment income is considered a major financial risk. The risk is mitigated by the charity's investments being monitored on a regular basis in order to detect and identify trends. Advice is received by expert investment management consultants who regularly attend meetings of the Charitable Fund Management Committee to advice on the current position of charity's investments.

Grant distribution framework

The decision on the London North West Healthcare Charitable Fund grant disbursement is made by London North West Healthcare Charitable Fund Management Committee. Grant applications are submitted and collated to the London North West Hospital Charitable Fund Office. Proposed grant applications are reviewed and recommended to London North West Hospital Charitable Fund Management Committee by London North West University Hospital Grant Peer Review Committee who are made up senior clinical and training and education staff at London North West University Healthcare NHS Trust.

Reserves policy

London North West Healthcare Charitable Fund current reserves policy specified that the London North West University Healthcare NHS Trust on the behalf of the Corporate Trustee, ensures that the unrestricted free reserves enable the charity to run efficiently and meet the needs of the beneficiaries.

The balance of the charity's free reserves is the total balance of the charity's unrestricted funds.

London North West Healthcare Charitable Funds current free reserves is appropriate:

- To avoid the necessity of realising fixed assets held for the charity's use; and to provide a pool which funds can be designated to specific projects.
- Fund the cost of fundraising staff
- In the event of financial losses, cover any losses incurred by the funds plus an additional 20% of those losses to reflect any future probability of increased volatility on investments.

The Charitable Fund Management Committee is currently reviewing the charity's reserves policy in line with development of a five year business plan for London North West Healthcare Charitable Fund and currently are using the reserves for pump priming fundraising staff and fund the remaining grant project.

As at 31 March 2019 the charity's free reserves totalled £2.476m. The current level of reserves is sufficient to cover the areas indicated.

Investment policy and performance

In accordance with London North West Healthcare Charitable Fund governing documents and Trust Deed. The corporate trustee, London North West University Healthcare Trust NHS Board, has the power to invest in such stocks, shares, investments and property in the UK, as deems appropriate. The London North West University Healthcare NHS Trust Board on behalf of Corporate Trustee has delegated its investment powers to a professional investment management company.

The charity's investment objectives set out in the investment portfolio are to:

- Invest within acceptable risks and to protect the values in real terms of portfolio over time
- Achieve an agreed annual income increasing over the long term.

London North West Healthcare Charitable Fund has a discretionary fund arrangement where an investment management company manages the portfolio with full discretion, with a duty of care and within an acceptable risk, in accordance with the charity's investment objectives.

The charity seized the opportunity in July 2019 to switch the investment fund units held in the charity's investment portfolio to more ethical investment units, designed for charities who want a more extensive approach to ethical investments. The funds have the same investment objectives and similar performance record as the investment units focusing on delivering income with long term capital growth.

The net return in the charity's portfolio as at 31 March 2019 was 10.3% in contrast with the comparator benchmark 8.54%. The ethical investment fund outperformed the comparator by 1.76%. The charity deposit fund held within the investment management portfolio return

was 0.53%, the comparative benchmark as 31 March 2019 was 0.52%. The deposit fund has consistently outperformed the comparator over the past few years.

Plans for the future

Changes in the Trust often influence the direction which the charity takes with regards to funding. When any changes take place, such as efficiency reviews and major capital projects, the charity adopts a sensible approach when committing the charity's reserves to certain projects. The level of charity activity is also dependent on donors' generosity.

Those areas identified for support in the coming year are as follows:

Fundraising

The London North West Healthcare Charitable Fund appointed three Fundraising Managers in summer 2018, whose specialities are Community, Events and Trusts and Foundations Fundraising. Raising charity awareness is crucial to fundraising and the charity plans to manage this in 2019/20 through co-ordinated participation events, reaching out and building relationships with the communities the Trust serves including local schools, businesses and the local population. A key aim is to ensure staff, patients and donors are aware of London North West Healthcare Charitable Fund's ambitions.

Equipment and service funding

The charity will continue to provide funding for equipment, where permissible, for wards and departments at London North West University Healthcare NHS Trust.

Training and education activities

The charity will continue to support London North West University Healthcare Trust staff and healthcare professionals with their training where possible.

Research and development

London North West Healthcare Charitable Fund will continue to help London North West University Healthcare Trust fund non-commercial research projects, where permissible, which will benefit patients directly.

Staff welfare

The charity will continue to provide staff with amenities such as staff rooms and fund staff motivation programmes.

Our five year business plan

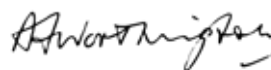
London North West Healthcare Charitable Fund is proposing to produce a five-year business plan to help the charity to achieve its aims including:

- Defining the operational aspect of delivering the charity's fundraising and Marketing strategy.
- Showcasing the social impact achieved by the charity
- Demonstrating the charity's financial stability and include a revised reserves policy for the charity.
- Supporting the Trust's Clinical Strategy which is integral to the charity Business plan, as project-specific campaigns and appeals are driven by organisational needs.
- The implementation of an annual expenditure plan for the charity.

Our gratitude

On behalf of the Trust Board and staff and patients at London North West University Healthcare NHS Trust we would like to thank all the donors and supporters whose charitable donations have supported services that the Trust provides.

Signed



Peter Worthington, Chairman
On the behalf of the Corporate Trustees
6 December 2019

Trustees' responsibilities statement

The trustees are responsible for preparing the Trustees' Annual Report and the financial statements in accordance with applicable law and regulations.

The Charities Act 2011 requires the trustees to prepare financial statements for each financial year. The trustees have to prepare the financial statements in accordance with United Kingdom Generally Accepted Accounting Practice (United Kingdom Accounting Standards and applicable law), including FRS 102 the Financial Reporting Standard applicable in the UK and Republic of Ireland.

The trustees must not approve the financial statements unless they are satisfied that they give a true and fair view of the state of affairs of the charity and of the incoming resources and application of resources, including the income and expenditure, of the charity for that period.

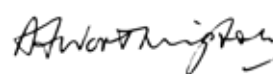
In preparing these financial statements, the trustees are required to:

- select suitable accounting policies and then apply them consistently;
- observe the methods and principles in the Charities SORP (FRS 102);
- make judgments and accounting estimates that are reasonable and prudent;
- state whether applicable UK Accounting Standards have been followed, subject to any material departures disclosed and explained in the financial statements;
- prepare the financial statements on the going concern basis unless it is inappropriate to presume that the charity will continue in business.

The trustees are responsible for keeping adequate accounting records that are sufficient to show and explain the charity's transactions and disclose with reasonable accuracy at any time the financial position of the charity and enable them to ensure that the financial statements comply with the Charities Act 2011, the Charity (Accounts and Reports) Regulations 2008 and the provisions of the trust deed.

They are also responsible for safeguarding the assets of the charity and hence for taking reasonable steps for the prevention and detection of fraud and other irregularities.

Signed



Peter Worthington, Chairman
On the behalf of the Corporate Trustees
6 December 2019

Independent auditor's report to the corporate trustee of London North West Healthcare Charitable Fund

Opinion

We have audited the financial statements of London North West Healthcare Charitable Fund (the 'charity') for the year ended 31 March 2019, which comprise Statement of Financial Activities, the Balance Sheet, the Statement of Cash Flow and the notes to the financial statements, including a summary of significant accounting policies. The financial reporting framework that has been applied in their preparation is applicable law and United Kingdom Accounting Standards, including Financial Reporting Standard 102; 'The Financial Reporting Standard applicable in the UK and Republic of Ireland' (United Kingdom Generally Accepted Accounting Practice).

In our opinion, the financial statements:

- give a true and fair view of the state of the charity's affairs as at 31 March 2019 and of its incoming resources and application of resources for the year then ended;
- have been properly prepared in accordance with United Kingdom Generally Accepted Accounting Practice; and
- have been prepared in accordance with the requirements of the Charities Act 2011.

Basis for opinion

We have been appointed as auditor under section 149 of the Charities Act 2011 and report in accordance with regulations made under section 154 of that Act. We conducted our audit in accordance with International Standards on Auditing (UK) (ISAs (UK)) and applicable law. Our responsibilities under those standards are further described in the 'Auditor's responsibilities for the audit of the financial statements' section of our report. We are independent of the charity in accordance with the ethical requirements that are relevant to our audit of the financial statements in the UK, including the FRC's Ethical Standard, and we have fulfilled our other ethical responsibilities

in accordance with these requirements. We believe that the audit evidence we have obtained is sufficient and appropriate to provide a basis for our opinion.

Conclusions relating to going concern

We have nothing to report in respect of the following matters in relation to which the ISAs (UK) require us to report to you where:

- the corporate trustee's use of the going concern basis of accounting in the preparation of the financial statements is not appropriate; or
- the corporate trustee has not disclosed in the financial statements any identified material uncertainties that may cast significant doubt about the charity's ability to continue to adopt the going concern basis of accounting for a period of at least twelve months from the date when the financial statements are authorised for issue.

Other information

The corporate trustee is responsible for the other information. The other information comprises the information included in the Trustees' Annual Report, set out on pages 3 to 25, other than the financial statements and our auditor's report thereon. Our opinion on the financial statements does not cover the other information and, except to the extent otherwise explicitly stated in our report, we do not express any form of assurance conclusion thereon. In connection with our audit of the financial statements, our responsibility is to read the other information and, in doing so, consider whether the other information is materially inconsistent with the financial statements or our knowledge obtained in the audit or otherwise appears to be materially misstated. If we identify such material inconsistencies or apparent material misstatements, we are required to determine

whether there is a material misstatement in the financial statements or a material misstatement of the other information. If, based on the work we have performed, we conclude that there is a material misstatement of this other information, we are required to report that fact.

We have nothing to report in this regard.

Matters on which we are required to report by exception

We have nothing to report in respect of the following matters where the Charities Act 2011 requires us to report to you if, in our opinion:

- the information given in the Trustees' Annual Report is inconsistent in any material respect with the financial statements; or
- the charity has not kept sufficient accounting records; or
- the financial statements are not in agreement with the accounting records and returns; or
- we have not received all the information and explanations we require for our audit.

Responsibilities of the corporate trustee for the financial statements

As explained more fully in the Trustee's Responsibilities Statement set out on page 25, the corporate trustee is responsible for the preparation of the financial statements which give a true and fair view, and for such internal control as the trustee determines is necessary to enable the preparation of financial statements that are free from material misstatement, whether due to fraud or error.

In preparing the financial statements, the corporate trustee is responsible for assessing the charity's ability to continue as a going concern, disclosing, as applicable, matters related to going concern and using the going concern basis of accounting unless the corporate trustee either intends to liquidate the charity or to cease operations, or has no realistic alternative but to do so.

Auditor's responsibilities for the audit of the financial statements

Our objectives are to obtain reasonable assurance about whether the financial statements as a whole are free from material misstatement, whether due to fraud or error, and to issue an auditor's report that includes our opinion. Reasonable assurance is a high level of assurance, but is not a guarantee that an audit conducted in accordance with ISAs (UK) will always detect a material misstatement when it exists.

Misstatements can arise from fraud or error and are considered material if, individually or in the aggregate, they could reasonably be expected to influence the economic decisions of users taken on the basis of these financial statements.

A further description of our responsibilities for the audit of the financial statements is located on the Financial Reporting Council's website at: www.frc.org.uk/auditorsresponsibilities. This description forms part of our auditor's report.

Use of our report

This report is made solely to the charity's trustees, as a body, in accordance with Section 154 of the Charities Act 2011. Our audit work has been undertaken so that we might state to the charity's trustees those matters we are required to state to them in an auditor's report and for no other purpose. To the fullest extent permitted by law, we do not accept or assume responsibility to anyone other than the charity and its trustees as a body, for our audit work, for this report, or for the opinions we have formed.

Grant Thornton UK LLP

Grant Thornton UK LLP

Statutory Auditor,
Chartered Accountants London

10 December 2019

Grant Thornton UK LLP is eligible to act as an auditor in terms of section 1212 of the Companies Act 2006.

London North West Healthcare Charitable Fund

Annual accounts for the year ended 31 March 2019

Statement of Financial Activities as at 31 March 2019

	Note ref.	Unrestricted Funds £000	Restricted Funds £000	Total Funds 2018-19 £000	Total Funds 2017-18 £000
Income from:					
Donations and Legacies	3.1	184	379	563	534
Other trading activities	3.2	-	177	177	235
Investments	12.1	108	173	281	279
Total Income		292	729	1,021	1,048
Expenditure on:					
Raising funds:					
Investment management costs	4	33	-	33	36
Fundraising costs	4	279	12	291	187
Sub total-raising funds	4	312	12	324	223
Expenditure on charitable activities:					
Research and Clinical Support		-	150	150	134
Medical Equipment Purchases		2	137	139	108
Staff Training and Education		2	295	297	319
Staff Welfare and Amenities		63	46	109	122
Patients Welfare and Amenities		24	99	123	55
Contribution to Building Costs		-	-	0	11
Grant Making Expenditure		1366	-	1,366	576
Sub total of charitable activities		1,457	727	2,184	1325
Expenditure on other		1	4	5	5
Total Expenditure		1,770	743	2,513	1,553
Net gains/(losses) on investments	11.1	513	-	513	99
Net income/(expenditure)		(965)	(14)	(979)	(406)
Transfers between funds	9	(1)	1	-	-
Net movement in funds		(966)	(13)	(979)	(406)
Reconciliation of funds:					
Total funds brought forward at 31 March 2018		3,327	4,664	7,991	8,397
Total funds carried forward at 31 March 2019		2,361	4,651	7,012	7,991

The Notes 1 to 19 form part of this set of financial statements.

The statement of financial activities includes all gains and losses recognised in the year.

All income and expenditure derive from continuing activities.

Balance Sheet as at 31 March 2019

	Note ref.	Total Funds 2019 £000	Total at 31 March 2018 £000
Fixed Assets:			
Common Investment Fund Units		6,986	8,127
Total fixed assets	11.1	6,986	8,127
Current Assets:			
Debtors	13.1	107	3
Cash at bank and in hand	13.2	156	163
Total current assets		263	166
Liabilities:			
Creditors: Amounts falling due within one year	14.1	(237)	(302)
Net current assets or liabilities		26	(136)
Total net assets		7,012	7,991
Funds of the charity:			
Restricted income funds	16.1	4,651	4,664
Unrestricted funds	16.2	2,361	3,327
Total charity funds		7,012	7,991

The Notes 1 to 19 form part of this set of financial statements.

The financial statements were approved by the Corporate Trustee and signed on their behalf.



Bimal Patel

Interim Chief Financial Officer

6 December 2019

Statement of Cash Flow as at 31 March 2019

Statement of Cash Flows

	Note ref.	Total Funds 2019 £000	Total at 31 March 2018 £000
Net cash (used in) operating activities	17.1	(1,943)	(594)
Purchase of Investments		(7,218)	(810)
Dividends and Interest from Investments		282	279
Proceeds from the sale of Investments		8,872	1,256
Net cash (used in) investing activities		1,936	725
Increase (decrease) in cash and cash equivalents in the year		(7)	131
Cash and cash equivalents at the beginning of the year	17.2	163	32
Total cash and cash equivalents at the end of the year	17.2	156	163

The Notes 1 to 19 form part of this set of financial statements.

Notes to the Accounts as at 31 March 2019

Accounting Policies

Note 1

1.1 Accounting Convention

The financial statements have been prepared in accordance with the Charities Statement of Recommended Practice Accounting and Reporting FRS102, effective 1st January 2015 and the Charities Act 2011 and under historical cost accounting convention modified to include the revaluation of investment property and managed investments. The charity constitutes a public benefit as defined by FRS102.

The financial statements are presented in sterling.

The statements have also been prepared in accordance with applicable United Kingdom accounting standards.

1.2 Incoming Resources

All income is recognised once the charity has entitlement to the income, it is probable that the income will be received and the amount of income receivable can be measured reliably.

Donations are recognised when the charity has been notified in writing of the amount and date of receipt.

In the event that a donation is subject to certain conditions before the charity is entitled to the funds, the income is deferred and not recognised until those conditions are fully met.

b) Investment Income

Investment income includes dividends and interest from investments. Interest is recognised normally upon notification of the interest paid.

Dividends are recognised once the dividend has been declared and notification of the received of the dividend due from our investment advisor.

c) Legacies

Legacies are accounted for as incoming resources once the receipt of the legacy becomes certain once confirmation has been received from the representatives of the estates that payment of the legacy will be made or property transferred and once all conditions attached to the legacy have been fulfilled.

1.3 Resources Expended

The funds held on trust accounts are prepared in accordance with the accruals concept. All expenditure is recognised once there is a legal or constructive obligation to make a payment to a third party.

The following policies address expenditure:

a) Charitable Activities

Costs of charitable activities comprise all costs incurred in pursuit of the charitable objects of the charity.

The charitable activities costs include direct and apportionment of support costs as shown in note 7.

b) Trustees and Connected Persons Transactions

The Trustees and Connected Persons Transactions, note 19, records the material transactions undertaken between LNWH Charitable Fund, trustees and other NHS organisations.

Details of the transfer are shown in note 18.

c) Allocation of Support Costs

Support Costs have been allocated to the charitable activities. Where the costs are shared between two or more charitable activities the support costs have been apportioned between categories.

Support Costs include financial administration costs which represents expenditure incurred in the management of the charity assets.

d) Cost of Generating Funds

The cost of generating funds are the costs associated with generating income for the funds held on trust.

Investment Management Fees

Investment fees costs represents costs incurred in relation to the management of fixed investments.

Fundraising Costs

Fundraising costs is represented by salary costs for fundraising team of three Fundraising Managers and other associated fundraising costs in respect of establishing the charity's marketing.

These costs include statutory audit and policy and procedure advice from professional bodies and organisations.

1.4 Funds Structure

Where there is a restriction on the purpose to which a fund may be put the fund is classified in the accounts as a restricted fund. Other funds are classified as unrestricted funds.

1.5 Fixed Assets

Investment fixed assets are shown at market value.

The gains and losses arising from the revaluation are can be found in the Statement of Financial Activities.

1.6 Unrealised Gains and Losses on Investments

Unrealised gains and losses on investments are calculated as the difference between the opening market value as at 1st April 2018 and the market value of investments as at 31 March 2019.

1.7 Pooling Scheme

An official pooling scheme is operated for investments relating to the following funds:

London North West Healthcare Charitable Fund
Central Middlesex Hospital Charitable Fund
Northwick Park Hospital General Charitable Fund
Heartbeat 2000
Respiratory and Research Fund
London North West Healthcare Expendable Common Investment Fund
St Marks Hospital
Brent Community Services General Charitable Fund
Northwick Park Hospital - Older People Services Fund
Wembley Hospital Fund
Ealing Hospital Charitable Fund
Childrens Centre Fund
Harrow Community Service General Charitable Fund
Harrow Community Service - Cancer Relief Fund
Brent Community Services - Physical Disability Service Fund
Margaret Emily Tristram Bequest

The Scheme was registered with the Charity Commission on 23/11/00 updated following the charity merger on 1 April 2015.

1.8 Taxation

As a registered charity, London North West Healthcare Charitable Fund is exempt from taxation of its income and gains falling within Section 505 Income and Corporation Taxes Act 1988 or section 256 Taxation of Chargeable Gains Act 1992, to the extent that these are expended on its charitable objects.

No tax charge has thus arisen in the year.

1.9 Going Concern

Following a review of London North West Healthcare Charitable Fund Reserves, committed expenditure and income forecast, London North West University Healthcare NHS Trust, Corporate Trustee, have reasonable expectation that the London North West Healthcare Charitable Fund has adequate resources to continue in operational existence for the foreseeable future.

London North West Healthcare Charitable Fund adopt the going concern basis in preparing its financial statements.

1.10 Significant Judgement and Estimates

In the course of preparing these financial statements no significant judgements and estimates have been made.

2. Prior year comparatives by type of fund

The SOFA provides prior year comparatives by type of fund in total; this note provides prior period comparatives for the Statement of Financial Activities and Balance Sheet for each of the fund types the London North West Healthcare Charitable Fund manages.

2.1 Unrestricted funds - Statement of Financial Activity for the year ended 31 March 2019

	2019 £000	2018 £000
Income from:		
Donation and Legacies	184	55
Income from the provision of training and education	-	-
Investment Income	108	143
Total Incoming resources	292	198
Expenditure on:		
Cost of raising funds	(312)	(208)
Charitable Activities	(1,457)	(658)
Other - Governance	(1)	(1)
Total expenditure	(1,770)	(867)
Net gains/(losses) on investments	513	99
Net income/(expenditure)	(965)	(570)
Transfers between funds	(1)	17
Net movement in funds	(966)	(553)
Reconciliation of funds:		
Total Funds brought forward	3,327	3,880
Total funds carried forward at 31 March 2019	2,361	3,327

2.2 Unrestricted Fund - Balance Sheet as at 31 March 2019

	2019 £000	2018 £000
Fixed Assets:		
Common Investment Fund Units	2,375	3,414
Total fixed assets	2,375	3,414
Current Assets:		
Debtors	15	-
Cash at bank and in hand	73	(66)
Total current assets	88	(66)
Liabilities:		
Creditors: Amounts falling due within one year	(102)	(21)
Net current assets / (liabilities)	(14)	(87)
Total net assets or liabilities for unrestricted funds	2,361	3,327
Total unrestricted funds	2,361	3,327

2.3 Restricted funds - Statement of Financial Activity for the year ended 31 March 2019

	2019 £000	2018 £000
Income from:		
Donation and Legacies	379	479
Income from the provision of training and education	177	235
Investment Income	173	136
Total Incoming resources	729	850
Expenditure on:		
Cost of raising funds	(12)	(15)
Charitable Activities	(727)	(667)
Other - Governance	(4)	(4)
Total expenditure	(743)	(686)
Net gains/(losses) on investments	-	-
Net income/(expenditure)	(14)	164
Transfers between funds	1	(17)
Net movement in funds	(13)	147
Reconciliation of funds:		
Total Funds brought forward	4,664	4,517
Total funds carried forward at 31 March 2019	4,651	4,664

2.4 Restricted funds - Balance Sheet as at 31 March 2019

	2019 £000	2018 £000
Fixed Assets:		
Common Investment Fund Units	4,610	4,713
Total fixed assets	4,610	4,713
Current Assets:		
Debtors	92	3
Cash at bank and in hand	84	229
Total current assets	176	232
Liabilities:		
Creditors: Amounts falling due within one year	(135)	(281)
Net current assets / (liabilities)	41	(49)
Total net assets or liabilities for unrestricted funds	4,651	4,664
Total restricted funds	4,651	4,664

3.1 Donations and Legacies

	Unrestricted Funds £000	Restricted Funds £000	Total 2018-19 £000	Total 2017-18 £000
Donations and Legacies	184	379	563	534
Total	184	379	563	534

Legacy income is only included where receipt is reasonably certain and the amount is known with certainty, or the legacy has been received.

3.2 Other Income

	Restricted Funds 2018-19 £000	Total 2018-19 £000	Total 2017-18 £000
Income from the provision of training and education	177	177	235
Total	177	177	235

4. Expenditure on raising funds

	Total Costs 2019 £000	Total Costs 2018 £000
Investment Management Costs	33	36
Fundraising Costs	291	187
Total	324	223

5. Staff Costs

The Staff Costs are included in the Support Costs note 6.1. London North West Healthcare University NHS Trust employs individuals to administer the charity.

The staff costs are accounted for on an accruals basis and are recharged from London North West University Healthcare NHS Trust.

The total employees employed by London North West University Healthcare NHS Trust to administer the charity was four. No employee had benefits in excess of £60,000. The support costs include an element of employer pension contribution to NHS superannuation scheme which is being paid by London North West University Healthcare NHS Trust.

The key management personnel, Head of Charitable Funds, 2018/19 remuneration totalled £59,964 excluding employees on-costs.

6. Analysis of support costs

6.1 Apportionment of Support Costs

Apportionment of Support Costs across	Research and Clinical Support £'000	Medical Equipment Purchases £'000	Staff Training and Education £'000	Staff Welfare and Amenities £'000	Patients Welfare and Amenities £'000	Grant Making Expenditure £'000	Total Allocated £'000
Salaries and related costs	36	32	69	12	22	28	199
Total	36	32	69	12	22	28	199

7. Analysis of Expenditure on Charitable Activities

	Activities undertaken £000	Support Costs £000	Total 2018-19 £000	Total 2017-18 £000
Research and Clinical Support	115	35	150	134
Medical Equipment Purchases	107	32	139	108
Staff Training and Education	228	69	297	319
Staff Welfare and Amenities	97	12	109	123
Patients Welfare and Amenities	100	23	123	55
Contribution to Building Costs	0	0	0	12
Grant-making expenditure	1,338	28	1,366	574
Total	1,985	199	2,184	1,325

7.1. Analysis of Grants

	Activities undertaken	Support Costs	2018-19	2017-18
	£000	£000	£000	£000
LNWH NHS Trust Grant Disbursement	1338	28	1366	574
Total	1338	28	1366	574

8. Changes in Resources Available for Charity

	Unrestricted Funds	Restricted Funds	Total Funds	Total Funds
	£000	£000	2018-19 £000	2017-18 £000
Net movement in funds for the year	(965)	(14)	(979)	(406)
Total	(965)	(14)	(979)	(406)

9. Transfer Between Funds

Fund	Transfer To Fund	Reason	Amount £000	Amount £000
NPH General Fund	(1) Medawar Prize Fund	Earmarked income	1	-
Total	(1)		1	-

10. Auditors Remuneration

The auditors remuneration costs of £5,000 (2018: £5,000), related solely to the audit with no other additional work undertaken.

11. Fixed Asset Investments

11.1 Movement in fixed asset investments

	2019 Total £000	2018 Total £000
Market Value brought forward	8,127	8,474
Add: additions to investment at cost	7,218	810
Less disposals at carrying value	(8,872)	(1,256)
Net losses/gains on revaluation	513	99
Market Value at 31st March	6,986	8,127
Historical Cost at 31 March	4,696	6,165

11.2 Fixed asset investments:

	2019 Total held in the UK £000	2018 Total held in the UK £000
Investments in Common Investment Fund	6,768	6,842
Cash Held as part of the investment portfolio	218	1,285
Total	6,986	8,127

12. Total Gross Income from Investments and Cash on Deposit

12.1 Income from Investments

	2019 Held in UK £000	2019 Total £000	2018 Total £000
Investments in Common Investment Fund	281	281	292
Total	281	281	292

13. Analysis of Current Assets

13.1 Analysis of Debtors

	2019 Total £000	2018 Total £000
Other Debtors	107	3
Total	107	3

13.2 Cash at bank and in hand

	2019 Total £000	2018 Total £000
Cash at bank and in hand	156	163
Total	156	163

14. Analysis of Current Liabilities and Long Term Creditors

14.1 Analysis of Creditors

	2019 Total £000	2018 Total £000
Trade Creditors	214	276
Other Creditors	23	26
Total	237	302

15. Analysis of principal SoFA components for previous reporting period

15.1 Analysis of principal SoFA component 2017/18

	Unrestricted	Restricted	London North West Healthcare Charitable Fund Total
	£000	£000	£000
Total Income	198	850	1,048
Total Expenditure	867	686	1,553
Net income/(expenditure)	(669)	164	(505)
Other Gains/(losses)	99	0	99
Transfer Between Funds	17	(17)	-
Net movement in funds	(570)	164	(406)
Total Funds brought forward	3,880	4,517	8,397
Total Funds carried forward	3,327	4,664	7,991

15.2 Analysis of net assets as at 1st April 2018

	Unrestricted	Restricted	1st April 2018 London North West Healthcare Charitable Fund
	£000	£000	£000
Common Investment Fund Units	3414	4713	8127
Debtors	-	3	3
Cash at bank and in hand	(66)	229	163
Creditors	(21)	(281)	(302)
Net Assets	3327	4664	7,991
Represented by:			
Unrestricted Funds			3,327
Restricted Funds			4,664
Total Funds			7,991

16. Analysis of Charitable Funds

16.1

Restricted Funds	Balance 31st March 2018 £000	Incoming Resources £000	Resources Expended £000	Transfers £000	Gains and Losses £000	Balance 31 March 2019 £000
A. Meadow House Hospice	730	244	(163)	(7)	-	804
B. Postgrad Pharmacy Fund	28	0	(18)	-	-	10
C. Maternity Services Fund	37	4	(4)	-	-	37
D. Orthopaedic Fund	10	0	(12)	4	-	2
E. Patrick Clements Clinic Fund	58	0	(10)	-	-	48
F. Regional Rehab Unit	206	20	(45)	13	-	194
G. Advance Life Support Fund (ALS)	11	53	(52)	(2)	-	10
H. Cancer Support Trust	105	3	(6)	29	-	131
Others (216)	3,479	406	(434)	(36)	-	3,415
Total	4,664	730	(744)	1	0	4,651

16.2

Unrestricted Funds	Balance 31st March 2018 £000	Incoming Resources £000	Resources Expended £000	Transfers £000	Gains and Losses £000	Balance 31 March 2019 £000
A. Central Middlesex Hospital General Fund	37	0	(1)	(21)	-	15
B. Northwick Park Hospital General Fund	272	69	(28)	(248)	-	65
Others (7)	3,018	222	(1,740)	268	513	2,281
Total	3,327	291	(1,769)	(1)	513	2,361

16.3. Detail of Material funds - Restricted

Name of Fund	Description of the nature and purpose of each fund
A. Meadow House Hospice	To support and promote patient welfare.
B. Postgrad Pharmacy Fund	Minor expenditure & training costs which cannot be met by the unit.
C. Maternity Services Fund	To provide amenities and facilities for maternity services.
D. Orthopaedic Fund	To support research & clinical care training within the department.
E. Patrick Clements Clinic Fund	To support research , education and team building in the department.
F. Regional Rehab Unit	General RRU Fund (General/Staff Education and Training).
G. Advance Life Support Fund (ALS)	Administration of course fees & expenses for running courses at Northwick Park Hospital.
H. Cancer Support Trust	To build, equip and maintain the Northwick Park Hospital Cancer Unit.

16.4. Detail of Material funds - Unrestricted

Name of Fund	Description of the nature and purpose of each fund
A. Central Middlesex Hospital General Fund	General purposes fund for Central Middlesex Hospital.
B. Northwick Park Hospital General Fund	To provide services and amenities for Northwick Park Hospital.

17. Notes to Cash Flow Statement**17.1 Reconciliation of net movement in funds to net cash flow from operating activities**

	31st March 2019 £000	31st March 2018 £000
Net Income/Expenditure	(979)	(406)
Deduct: Gains on Investments	(513)	(99)
Deduct: Dividends and Interest from investments	(282)	(279)
Increase in Debtors	(104)	(1)
Decrease/ (Increase) in Creditors	(65)	191
Total	(1,943)	(594)

17.2 Analysis of cash and cash equivalents

	31st March 2019 £000	31st March 2018 £000
Cash in hand and at Bank	156	163
Total Cash and Cash Equivalents	156	163

18. Trustee and Connected Persons Transactions

During the year none of the Trust Board or members of key management staff have undertaken any material transaction with London North West Healthcare Charitable Fund.

Capital and Revenue Payments

The charitable trust has made revenue and capital payments to the London North West University Healthcare NHS Trust to the value of £513,329, see note 18.2, There has been no other payments and transactions between London North West Healthcare Charitable Fund and the above mentioned NHS Trust.

The London North West University Healthcare NHS Trust Board members are listed below:

London North West University Healthcare NHS Trust Board

Executive Directors

Jacqueline Docherty	Chief Executive
Arshiya Khan	Chief Operating Officer
Simon Crawford	Director of Strategy
Jon Bell	Chief Financial Officer (to 16/08/19)
Amanda Pye	Chief Nurse (to 28/02/19)
Barbara Beal	Interim Chief Nurse (from 03/07/18 to 17/05/19)
Martin Kuper	Medical Director
Claire Gore	Director of Human Resources
Gary Munn	Acting Director of Estates and Facilities (from 01/01/08 to 31/01/19)
Mark Trumper	Director of Estates and Facilities (from 01/02/19)
Sandra Adams	Director of Corporate Affairs (to 22/02/19)
Bimal Patel	Interim Chief Financial Officer (from 19/08/19)
Lisa Knight	Chief Nurse (from 29/04/19)
David Searle	Director of Corporate Affairs (from 02/04/19)

Non-Executive Directors

Peter Worthington	Chairman
Ruwan Weerasekera	Non-executive Director (to 31/03/19)
Andrew Farrell	Non-executive Director
Janet Rubin	Non-executive Director
Vineta Bhalla	Non-executive Director
Andrew van Doorn	Non-executive Director
Desmond Johnson	Non-executive Director (from 01/10/19)
David Taube	Non-executive Director
David Moss	Non-executive Director (from 01/08/19)
Neville Manuel	Non-executive Director (from 01/06/19)

18.1 Trust Board Remuneration

No expense or remuneration has been received in the year by members of the London North West University Healthcare NHS Trust Board in respect of activities related to the charitable fund (2018:£nil)

18.2 Transactions with Trustees or connected persons

Name of party involved, a description of the transaction and description of nature of the of the relationship.	Amount 2018-19 £	Amount 2017-18 £
London North West University Healthcare NHS Trust recharges to to London North West Healthcare Charitable Fund	513,329	691,960
Total	513,329	691,960

19. Trustee indemnity insurance

Trustee indemnity insurance was not obtained.



**London
North West
Healthcare
Charity**

If you would like more detail on our expenditure, the impact we have made and where our money has been spent you can view our Achievements and Performance at lnwhcharity.org.uk or contact the fundraising team on 020 8869 3367.

Follow us at:



@LnwhCharity



LNWHCharity1/



lnwhcharity.org.uk/