



Reach Children's Hub 2019





I am delighted to present this report, setting out the story of the Reach Children's Hub so far. It is the latest stage in a journey which began with an application to open a school in Feltham in 2011. The Hub has emerged from Reach Academy Feltham, an all-through school that opened in 2012 and now serves 900 young people from 2-18.

The Reach Children's Hub offers a fantastic opportunity to broaden and deepen the work that has been done through the school since it opened.

- Through the Hub we are able to work with families before their children come to Nursery or Reception and our aim is to meet as many families as possible before their children are born through our antenatal offer.
- Through the Hub we are able to share our family support practices and approaches and we have already been able to offer Family Links and Peep classes to families in Nurseries across the community.
- Through the Hub we are able to scale the support we offer to young people and families and work beyond the Reach Academy Feltham community.

I would like to thank all those involved in developing our organisation, our supporters, trustees, partners, funders and, especially, our committed staff team. We are proud of the impact we have already had in our community and look forward to amplifying it dramatically in the years to come: making our vision of lives of choice and opportunity for young people in Feltham a reality.

A stylized, handwritten signature in white ink, appearing to read 'Jon McGoh'.

Jon McGoh, Chair of the Reach Foundation



OUR STORY, VISION & MISSION

Reach Academy was founded in 2012 with the mission to help young people in Feltham from all backgrounds enjoy lives of choice and opportunity. In 2014, Ofsted rated the school 'outstanding' in all areas and it now educates 900 children and young people aged 2 to 18 years old. Over 40% of pupils attending Reach Academy qualify for free school meals and 27% of places are allocated to pupils from low-income families who are eligible for additional funding, in order to ensure that the intake reflects the community.

The school has achieved consistently strong academic results. Its 6th form students have secured places at top universities and it is nationally and internationally recognised for its inclusive approach. The school offers Place2Be counselling, universal and targeted home support, and Family Links parenting courses.

After working in the area for the last seven years, the school's governors and leaders decided to broaden and deepen the impact of Reach Academy in the local community, by building a scalable model for social transformation in the form of Reach Children's Hub.

A local consultation with students, parents and over 30 community organisations identified the need for more family support, antenatal and early years' support, careers guidance, mental health support, and adult education. The evidence and experience from the school also identified two main obstacles to pupil progress: the achievement gap between socioeconomically disadvantaged and less disadvantaged children in the early years; and the barriers to learning faced by the most vulnerable and young people who have had adverse childhood experiences.

Building on these findings, Reach Children's Hub began operating in 2017 and offers an innovative cradle-to-career pipeline of support, from the antenatal stage through to early adulthood, for children, young people and families in Feltham. Our approach is underpinned by a belief in the importance of early support for families to ensure children are securely attached to their parents and carers, and ready to learn, as well as a recognition that children and young people can experience complex difficulties at any stage of life.

Our team deliver a range of programmes and activities directly to the people who need it the most.

Some are offered directly by the Hub but we also do outreach work in other settings, including local Nurseries, Primary and Secondary schools, and Sixth Forms. We choose to run programmes that are well-established and are proven to have impact, as well as pilot projects that are grounded in research and evidence and which we rigorously evaluate. We work with partner organisations who have strong track-records of achieving significant impact, such as Save the Children UK and Career Ready.

Alongside this, the Hub seeks to enhance the collective impact of organisations and stakeholders working in the area and to develop sustainable local leadership, which will support systems change. By building collaborative networks and evaluating our impact every step of the way, we hope that Reach Children's Hub will be an internationally replicable model for community impact work and have a profound impact on both policy and practice.



VISION & MISSION

VISION

A life of choice and opportunity for every young person in Feltham.

MISSION

To enable children and young people to enjoy lives of choice and opportunity, by supporting them to be safe and well supported; healthy; academically successful; and to have strong relationships and networks.

THE CORE OUTCOMES WE AIM TO ACHIEVE FOR CHILDREN AND YOUNG PEOPLE

Based on international research evidence, our local community consultation, and discussion with academic and professional experts from Educational Psychology, Health, Early Years, and Social Sciences, we believe that a life of choice and opportunity requires children and young people to:



BE SAFE AND WELL SUPPORTED

Children and young people are free from harm and know how to keep themselves safe. They are well-supported at home.



BE HEALTHY

Children and young people are physically, socially and emotionally healthy.



ACHIEVE WELL ACADEMICALLY

Children and young people achieve good academic results and leave school prepared for the next stage. Families are actively involved in their education.



DEVELOP STRONG RELATIONSHIPS & SOCIAL NETWORKS

Children and young people have strong peer and familial relationships and engage positively with their local community.

These four core outcomes guide our work with children and young people aged between 0 and 21.

WE HAVE A PARTICULAR FOCUS ON THREE LIFE STAGES:



Making a great start in life: Ensuring that all children we work with are healthy and well-supported in their first few years, and that their parents have all the help they need to provide a safe, nurturing environment.

Succeeding at school: Providing the support, guidance, advice and activities that young people and their families need to ensure success in school and positive engagement with their local community.

Achieving ambitions: Supporting young people to refine their goals, make positive choices about their life after school, and succeed in whichever path they choose, whether that is attending a top university, undertaking a quality apprenticeship, or going straight into the world of work.

OUR CRADLE-TO-CAREER PIPELINE

We work closely with Reach Academy to provide a cradle-to-career pipeline of support and provision for local children and young people.

HELPING CHILDREN AND YOUNG PEOPLE TO:



BE SAFE AND WELL SUPPORTED



ACHIEVE WELL ACADEMICALLY



BE HEALTHY



DEVELOP STRONG RELATIONSHIPS & SOCIAL NETWORKS



BIRTH & BEYOND SUPPORT

0-2 years



P8-9



EARLY LEARNING COMMUNITY

0-5 years



P10-11



FAMILY SUPPORT

All years



P20-21



FARM

All years



P18-19



YOUTH ENGAGEMENT

10-18 years



P12-13



FELTHAM FUTURES

16-21 years



P14-15

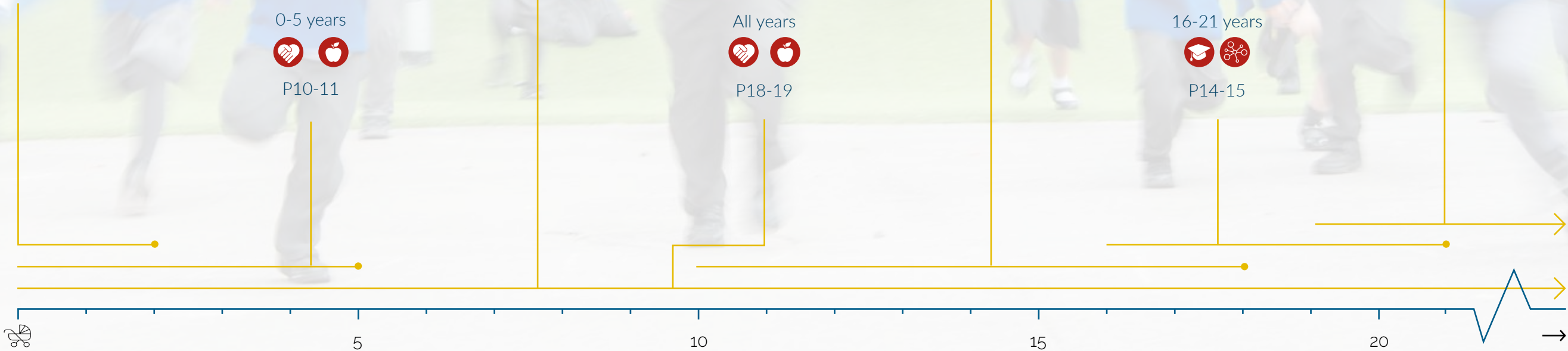



ADULT EDUCATION

19+ years



P16-17



A photograph showing a woman with long brown hair smiling warmly while holding a baby. The baby is wearing a white shirt and dark pants. Another woman, wearing a pink shirt, is partially visible on the right, looking down at a tablet computer. The background is slightly blurred, showing a bookshelf with books and a yellow container.

"It is absolutely great meeting with Aerin, I appreciate her support so much, having someone to talk to who is another adult is great, and just having the time to talk means a lot to me. It reminds me that I'm not just a mother but an adult too."

W, Local Mother

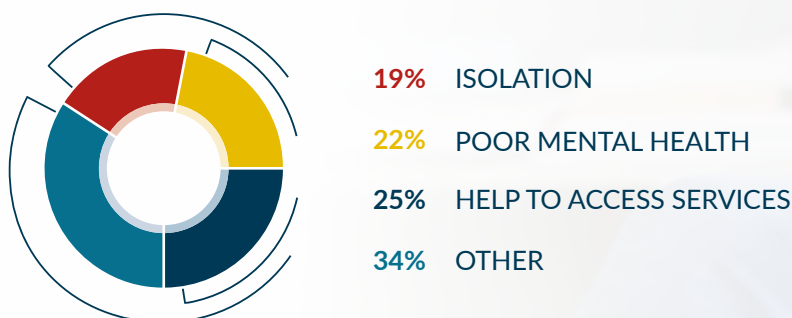
BIRTH & BEYOND COMMUNITY SUPPORTERS (IN PARTNERSHIP WITH THE NCT)

Between April 2018 and April 2019, The National Childbirth Trust (NCT) ran their Birth and Beyond Community Supporters project through Reach Children's Hub. The project works in five locations across England, funded by the Department of Digital, Culture, Media and Sport (DCMS) and Nesta, a global innovation foundation. We were the official partner for their Feltham project, and continue to support and facilitate it.

The project trains local mothers to act as peer supporters for new mothers in the Feltham and West Hounslow area and helps to:

- reduce social isolation
- boost confidence
- link new mothers with local support services

The project receives referrals from a range of local services, including health visiting and midwifery, and for a number of reasons:



- 36** Local mothers have been trained
- 298** Families have been supported nationwide
- 105** Families have been supported in Feltham
- 95%** Of interactions have been well or very well received
- 95%** Volunteers reported 95% of support sessions were good or excellent

"It was so helpful of Caroline to help me with the directions to the asylum hearing. I wouldn't have been able to do that myself. She is really kind to me."

M, Local Mother

The isolation and social anxiety of mothers involved in the project has notably reduced: for instance, one mother who did not leave the house unaccompanied prior to gaining the help of a peer supporter now has the confidence to shop and attend appointments on her own.

FELTHAM EARLY LEARNING COMMUNITY

Reach Children's Hub has partnered with Save the Children UK to develop an Early Learning Community in Feltham. The project began in September 2018 and is funded for three years, with the overall aim to **improve early learning outcomes and school-readiness for children growing up in poverty.**

The Early Learning Community will achieve this aim through:

- direct delivery of evidence-based interventions
- innovating to create new or improve existing services
- creating the conditions for systems change

IN YEAR 1, WE HAVE IMPLEMENTED THE FOLLOWING INTERVENTIONS:



WORKFORCE DEVELOPMENT

We held seven sessions of the Early Years Network, offering free monthly professional development, which were each attended on average by 20 participants from five different local settings. That number increased when a specific session interested a wider audience.

100% of attendees said that the Early Years Network has had a 'positive' or 'considerable positive' impact on their practice over the last six months and 100% 'agreed' or 'strongly agreed' that the Hub would be a valuable source of support in the future.

Sessions have included topics such as:

- The impact of attachment on children's behaviour
- How to deliver effective speech & language interventions
- Creating an emotionally healthy climate in Early Years' settings



SOCIAL GROUPS

148 children have attended free holiday activities with their parents and carers. Activities have included trips to local parks, community farm days and cultural experiences.

The Hub runs several social groups for parents: Coffee & Crafts, Walk & Talk and a support group for parents who do not speak English as their first language. Parents who regularly attend have developed greater confidence and strong relationships. Their social network is now self-sustaining: they have organised their own daily exercise sessions and are attending ESOL classes together.



PARENTING COURSES

56 families engaged with at least one of the parenting courses, which were delivered across five local settings; staff in those settings were given follow-up training by the Hub so that they can continue to deliver the courses in-house. Six parents have also been recruited and trained to deliver the Peep 'Learning Together' parenting course for 2019-2020.

"The impact [of Families Connect] on parents was beyond what we had expected and as a result we have seen greater parental engagement in all areas of the curriculum since. Our parents are now more confident supporting their children at home with reading, writing and numeracy. Furthermore, they have also started supporting their children to express their emotions and name emotions they may not have come across before."

Edward Pauling Primary School

96% of parents said they really enjoyed the Families Connect programme and that they benefitted from interacting with other parents as part of a group.



BUILDING BLOCKS

26 families have received a Building Blocks' grant to help with early learning packs and household items. The Family Nurse Partnership and health visiting team have become referral partners and are ensuring the grants reach families across the whole of the Early Learning Community.

"The grant has enabled Mum to buy a new bed so that the children can sleep separately from her and develop their bedtime routine. She is also more aware of the importance of developing her child's fine motor skills, as a result of the fun resources in the early learning pack."

Building Blocks Referral Partner

*"We are helping a lot of young people in the community
by raising awareness about social problems"*



*"It helps us stay happy and healthy"
"It helps people see that teenagers are not just bad"*

YOUTH ENGAGEMENT

Since September 2017, Reach Children's Hub has been running Girls Group – a support, empowerment and informal education group targeted at female students aged 14-17, who have been identified as at-risk or vulnerable.

"We love what we do and deserve to spread the love we have"



The Girls Group have participated in Leadership residentials and Sports leadership programmes funded by London Youth.



In 2018 we were involved in the White Ribbon Campaign; a global movement of men and boys working to end male violence against women and girls.



The Girls Group participated in the International Women's Day 2018 and 2019.



29 young people attended the Future Stars programme ran by Hounslow Action for Youth at Reach.

"Thank you for creating this group and including me in it and making me one of the first members. I feel really safe and loved in this group and really wish everyday life could be like this."

A focus group undertaken by our PhD researcher concluded that the members of Girls Group feel they are making significant progress in a range of areas, including:

- ✓ Feeling part of something and feeling accepted, supported and safe
- ✓ Learning new things
- ✓ Learning to express themselves
- ✓ Becoming better people
- ✓ Developing leadership skills
- ✓ Developing a greater understanding of exploitation, including Child Sexual Exploitation
- ✓ Better understanding of healthy relationships
- ✓ Feeling more confident
- ✓ Making more friends
- ✓ Helping more in the community

*"[Feltham Futures] is the best thing that
has happened to the sixth form"*



FELTHAM FUTURES

Feltham Futures supports young people to develop an ambitious and clear vision for their future, and to reach the most suitable, highest quality post-school destinations that they can. A dedicated Feltham Futures Coordinator works 1:1 and in groups with students, providing tailored advice, guidance and support, as well as delivering information sessions and careers events for whole cohorts. The project also incorporates programmes delivered by our strategic partners, such as Career Ready and OxFizz. We have established relationships with widening participation teams from local Universities, and businesses operating both locally and nationally.

1,000+

The project has engaged over 1,000 local young people in at least one activity related to careers, Universities or employability skills.

800

800 students took part in our Bright Futures Ahead day, meeting volunteers from over 50 organisations including British Airways, GSK, Quantumblack, BP and Chelsea Hospital.

150+

Over 150 students and parents from across 4 schools in Feltham attended our community careers fair, engaging with over 40 future destinations across the corporate, charity and university sectors.

63

With the support of the project, 63 Students across Y12 and 13 have independently visited universities in Oxford, Cambridge, Lancaster, Newcastle, Edinburgh, Bath, Surrey and London, both residentially and non-residentially.

20

20 students in Year 11 received 1:1 NEET prevention coaching.


56

Thanks to our partnership with Career Ready, 56 students across Reach Academy and Logic School will have undertaken paid work placements for 4-6 periods at organisations such as BP and QuantumBlack.

120

120 students across Years 9 and 10 attended sessions to improve their knowledge of the local labour market, meeting 30 professional volunteers from GSK.





"The course is having a positive impact on my children. I talk English at home with them, I can talk to teachers at school, and I can talk to the Doctor to understand [their] health."

A, ESOL student

ADULT EDUCATION

Between September 2017 and January 2019 we were able to support Hounslow Council Adult & Community Education team to run a number of Adult Education courses based in Reach Academy. The courses were attended by a mixture of Reach Academy parents and other adults from the local community – the majority of those who undertook the courses were not connected with the school.

“The TA Course is helping with parenting, as I have a better understanding of my child’s day at school. The Maths course is helping on a practical level, as my daughter was recently diagnosed with Type 1 Diabetes, so I need to calculate percentages in food content - I didn’t know how to do that until I started this course.”

A, Teaching Assistant Level 2 & Maths student

84

84 local adults benefited from a Hounslow Adult & Community Education course at Reach Academy through the Hub

5

We offered five different courses: Teaching Assistant Level 1, Teaching Assistant Level 2, Maths, English, and ESOL

20+

Over 20 of those enrolled on the courses were also able to undertake volunteering placements in Reach Academy

“The placement is giving me the opportunity to learn skills with older children, which I can then use at home in in my family. I’m using teaching skills at home to support my child.”

L, Teaching Assistant Level 2 student

100%

Of those surveyed in March 2018 from across all five courses, 100% of Adult Education students said they were either “satisfied” or “very satisfied” with what they achieved on the course

100%

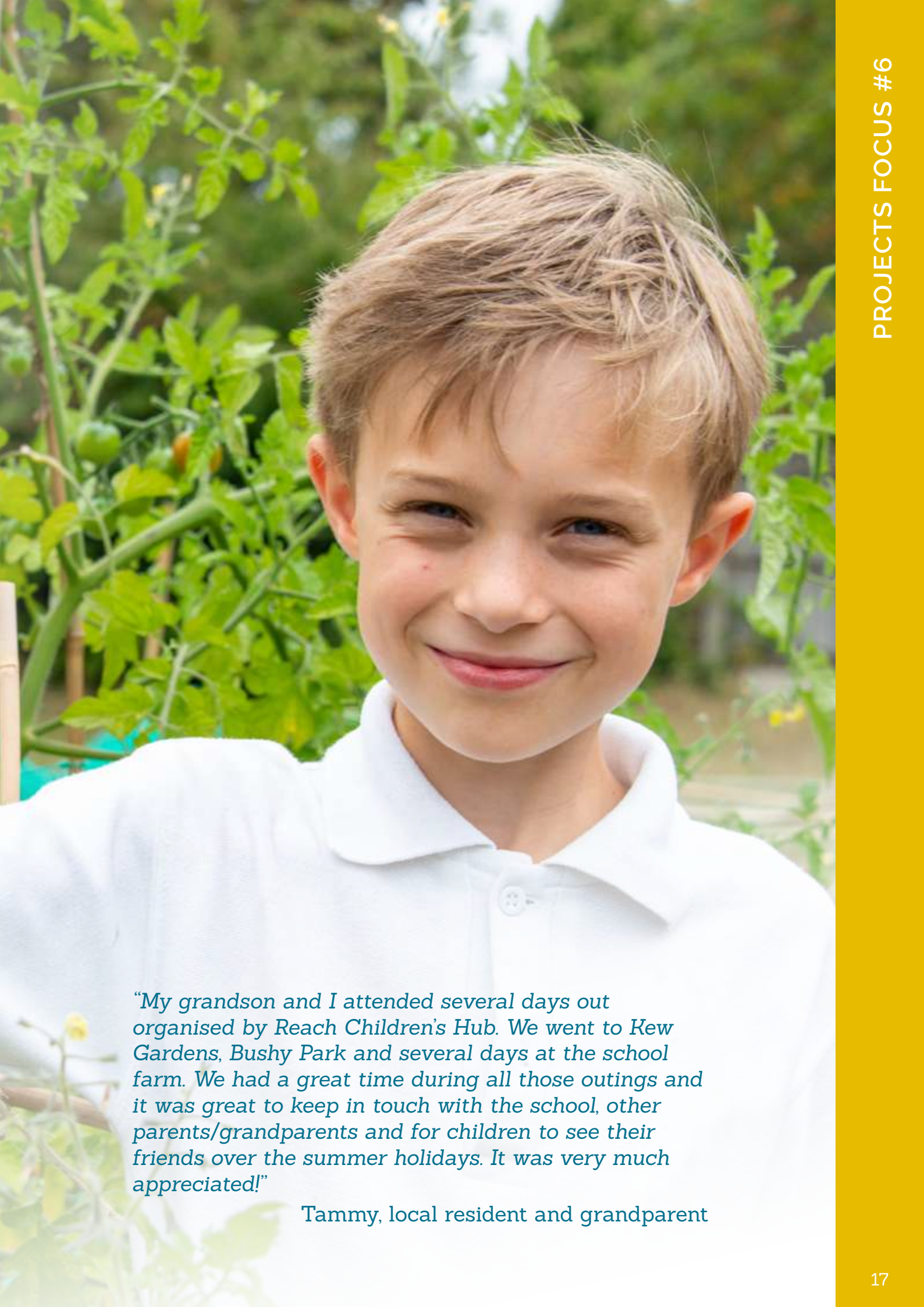
100% of survey respondents said that they were stretched to learn more than they expected, that they received feedback on their work which enhanced their learning, and that they were given helpful information on what to do next

90%+

Over 90% of respondents said they would recommend their Adult Education course to a friend

“The course is definitely helping with my children - I’m actually able to help them with their homework now!”

M, Maths student



"My grandson and I attended several days out organised by Reach Children's Hub. We went to Kew Gardens, Bushy Park and several days at the school farm. We had a great time during all those outings and it was great to keep in touch with the school, other parents/grandparents and for children to see their friends over the summer holidays. It was very much appreciated!"

Tammy, local resident and grandparent

COMMUNITY FARM

Our Community Farm is located at Reach Academy and managed by the Reach Children's Hub. It is a fantastic resource that has undergone several transformations since it was built in 2016 with support from Heathrow Community Fund and School Food Matters, on behalf of the Whole Kids Foundation. The farm currently consists of:

- an extensive outdoor learning and play area, complete with a mud kitchen and an assortment of climbing logs and tyres to encourage children's physical activity
- a wild, natural area designated for Forest School activities
- planters and garden patches for growing flowers and vegetables
- outdoor structures for housing small farm animals such as chickens and guinea pigs
- a polytunnel for seed propagation and cultivation

Pupils and staff at Reach Academy use the farm to support the curriculum, for extra-curricular activities and to host family events. The Hub runs activity days on the farm for families and works together with teams such as the Family Nurse Partnership and Refugees Welcome Hounslow to connect families in need of extra support. A range of vegetables are grown seasonally on the farm, harvested by children and then distributed to families and staff, including beetroot, lettuce, kale, broad beans, chard, tomatoes, herbs and garlic. Throughout the year we worked with Riana Development Network, a non-profit charitable organisation that supports local communities' and schools' gardening activities.

90

90 children enrolled in Reach Up, the school's on-site nursery, access the farm daily as part of their outstanding early years' provision

6-11

A cohort of pupils from Year 6 to Year 11 volunteer as Young Farmers and take care of the animals

360

360 children in the primary phase access the farm throughout the school year as part of the wider curriculum, which includes Forest School sessions

3-5


Small groups of 3-5 pupils are given separate intervention sessions on the farm

60+

Over 60 children have attended activity days on the farm during school holidays with their parents, carers and grandparents



We believe the Community Farm can provide a unique opportunity for people of all ages and from different backgrounds to make social connections and work together. Gardening and other outdoor activities can improve physical and mental well-being; promote healthy eating and a healthy lifestyle; and develop life skills such as resilience, teamwork and communication.



"The Parenting Puzzle course has helped me deal with situations differently by using the strategies we discussed: a more positive attitude and praise. It felt like all the parents who attended had known each other for ages. The sessions were friendly and non-judgemental; a real eye-opener."

Parent

FAMILY SUPPORT

At the Reach Children's Hub, we believe it is essential to engage with a child's whole support network and to build strong relationships with their key adults. We understand that people can experience complex difficulties at any stage of life and that every situation will be different. Therefore, our approach to Family Support is underpinned by a commitment to do whatever it takes to support individual parents and carers and to respond to their particular needs.

Our Family Support worker invests time building relationships based on love and trust, which enables her to effectively support families when they are at their most vulnerable. She currently works closely with the Inclusion Team at Reach Academy and manages referrals to work with specific families. Over the past 12 months, the Family Support worker and Inclusion Team have supported with issues as diverse as housing, immigration, substance abuse and domestic violence.

In addition to working 1:1 with families, our Family Support worker also delivers a range of Family Links courses, including the Parenting Puzzle, Talking Teens and the Nurturing Programme. Parents and carers are able to contact the Family Support worker directly, as we recognise that the intensity of support required will fluctuate over time and it is important that families do not feel abandoned and are able to contact someone during a crisis or if they need more informal support.

22

22 families accessed intensive, sustained support from our Family Support worker.

50+

Parents also attended workshops around Healthy Relationships, CSE, Diet and Oral Health and a network for Previously Looked After Children's parents and carers.

35

35 families attended a Family Links course at Reach Academy Feltham, with others accessing the courses through our Early Learning Community.

70+

More than 70 families accessed our programme of holiday trips and visits.

As well as helping parents and carers to create a nurturing home learning environment and support their child's development, good Family Support can improve health and wellbeing outcomes for the individuals themselves. Social isolation is often an underlying issue that exacerbates the difficulties parents face but through active signposting and accompanying them on outings or to appointments, individuals have reported **increased levels of confidence, resilience, wider social networks and more active engagement in their local community.**

Our analysis shows improvements in **attendance and academic outcomes** for children whose parents access intensive support.

NEXT STEPS:

- We will continue to offer Family Links courses to all Nursery and Reception parents at Reach Academy in September 2019.
- From January 2020, our Family Support worker and Early Years keyworker will be trained to deliver the Family Links 'Welcome to the World' antenatal group programme for parents expecting a baby.
- Our Family Support worker will deliver the 'Let's Talk' programme in Feltham, in partnership with the Hounslow Domestic and Sexual Violence Outreach Service.



THE LONG-TERM AMBITION

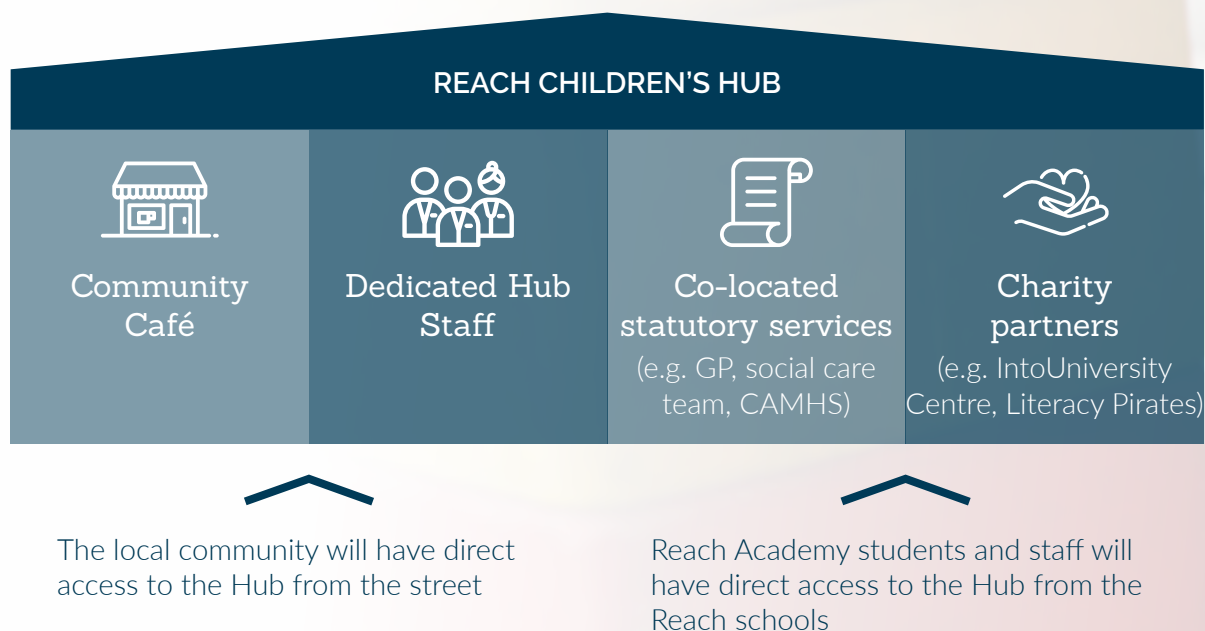
Our long-term ambition is to have a dedicated Hub building neighbouring Reach Academy Feltham's two schools (the Multi-Academy Trust has been approved to open a second school on an adjacent site to the current school, which will be completed by 2022).

The physical Reach Children's Hub will be a base for local cradle-to-career provision, and will bring together:

- The Hub's dedicated staff team, with expertise in Early Years, safeguarding, youth engagement, wellbeing and mental health, delivering the projects outlined in this report, as well as intensive support for young people and families referred by Reach Academy schools and other local schools
- Co-located statutory services, such as a satellite GP surgery, CAMHS provision, and social care
- Charity partners: the Hub would provide a space for mission-aligned local and national charities, which may include IntoUniversity and Literacy Pirates, among others
- Informal play space for young children
- An informal café space, providing a welcoming, friendly entry point into the Hub for the local community, as well as employment opportunities for local people, including those benefitting from the Hub's provision

The Hub building will have two entrances, one which is open to the local community, and one which is a dedicated entrance for pupils from the schools.

The diagram below provides an indication of how the Hub will be accessible for the community and for the Reach Academy schools:



As well as providing intensive support for students and families referred from the schools, the Hub will also provide training for school staff in areas such as mental health, wellbeing, and inclusion. When supporting students from the schools, Hub staff will adopt a closely coordinated approach with the schools' teachers and inclusion teams.

From antenatal classes to careers guidance, the Hub will be a place of care, nurture and support for local children and families from all backgrounds, from cradle to career.

PARTNERSHIPS

We know that in order to have the impact we aspire to we need to work closely with organisations that share our vision and values. We have developed strong relationships and formal partnerships with a range of aligned organisations, working both locally and nationally.

Over the past 12 months, we have worked with the following organisations based in Hounslow and Feltham:



Age UK Hounslow



Feltham Arts Association



Hounslow Action for Youth



Feltham Community Development Association



Metropolitan Police
(Designated Ward Officer)



Riana Development Network

We are also supporting the work of various departments within the London Borough of Hounslow and the Hounslow and Richmond Community Healthcare NHS Trust including:



Family Nurse Partnership



Refugees Welcome Hounslow



Domestic and Sexual Violence Outreach Service



Health Visitors



Children's Centres



Early Help Hub



Families First

The Hub is bringing resource and capacity into the area through our partnerships with organisations based outside of Hounslow:



Save the Children UK have committed to fund the development of the Early Learning Community in Feltham over three years.



We ran a successful 1 year pilot of the **National Childbirth Trust's** Birth and Beyond Community Support network, which has now been commissioned for another year by Hounslow's Clinical Commissioning Group.



We are collaborating with **Kingston University** on several projects: the National Collaborative Outreach Programme (NCOP) in Feltham; an innovative longitudinal project around attitudes to Higher Education in Primary-aged pupils; and the local delivery of their popular Foundation Degree in Early Years.



The Hub is a member of the Sponsoring Committee for Hounslow Citizens and are working with **Citizens UK** to oversee community organising in the West of the borough.



Career Ready, **OxFizz** and **Spark London** are all partners in the delivery of our Feltham Futures offer to students considering their post-school choices.



We have a long-standing partnership with **Family Links**, running the nurturing programme within Reach Academy and across Feltham as well as bringing their staff development offer to Feltham. We are also working with **PEEP** to offer training and classes to strengthen the home learning environment.



We have begun to explore future opportunities for partnerships to create a much-needed youth zone in Feltham with **OnSide**, an **IntoUniversity** centre and a literacy intervention centre run by **Literacy Pirates** (formerly Hackney Pirates).

We are extremely grateful for the funding and support we receive from the following organisations:



The Harlequins Foundation



The Heathrow Community Fund



Inspire Hounslow



The KPMG Foundation



The Mohn Westlake Foundation



The Rank Foundation



School Food Matters
on behalf of the
Whole Kids Foundation



The Winston Churchill Memorial Foundation

THE REACH FOUNDATION

53-55 HIGH STREET

FELTHAM

TW13 4AB

REACHACADEMYFELTHAM.ORG.UK/REACHCHILDRENSHUB



@REACHHUBFELTHAM



THE REACH FOUNDATION
(A Company Limited by Guarantee)

TRUSTEES' REPORT AND FINANCIAL STATEMENTS
FOR THE PERIOD ENDED 31 AUGUST 2019

THE REACH FOUNDATION
(A Company Limited by Guarantee)

CONTENTS

	Page
Reference and Administrative Details of the Company, its Trustees and Advisers	1
Trustees' Report	2 - 8
Independent Auditor's Report on the Financial Statements	11
Statement of Financial Activities	12
Balance Sheet	13
Notes to the Financial Statements	14 - 20

THE REACH FOUNDATION
(A Company Limited by Guarantee)

**REFERENCE AND ADMINISTRATIVE DETAILS OF THE COMPANY, ITS TRUSTEES AND ADVISERS
FOR THE PERIOD ENDED 31 AUGUST 2019**

Trustees	J Baxter N Jennings J McGoh T Roberts (appointed 5 December 2018) J Tacon M Trebilco
Company registered number	06546261
Charity registered number	1129683
Registered office	Reach Academy Feltham 53-55 High Street Feltham TW13 4AB
Independent auditor	MHA MacIntyre Hudson Chartered Accountants Registered Auditors 2 London Wall Place London EC2Y 5AU

THE REACH FOUNDATION
(A Company Limited by Guarantee)

TRUSTEES' REPORT
FOR THE PERIOD ENDED 31 AUGUST 2019

The Trustees present their annual report together with the audited financial statements of the Company for the period 1 April 2018 to 31 August 2019. The Annual Report serves the purposes of both a Trustees' report and a directors' report under company law. The Trustees confirm that the Annual Report and financial statements of the charitable company comply with the current statutory requirements, the requirements of the charitable company's governing document and the provisions of the Statement of Recommended Practice (SORP) applicable to charities preparing their accounts in accordance with the Financial Reporting Standard applicable in the UK and Republic of Ireland (FRS102) (effective 1 January 2015) as amended by Update Bulletin 1 (effective January 2015).

Since the Company qualifies as small under section 382 of the Companies Act 2006, the Strategic Report required of medium and large companies under the Companies Act 2006 (Strategic Report and Directors' Report) Regulations 2013 has been omitted.

Objectives and activities

a. Policies and objectives

In setting objectives and planning for activities, the Trustees have given due consideration to general guidance published by the Charity Commission relating to public benefit, including the guidance 'Public benefit: running a charity (PB2)'.

b. Strategies for achieving objectives

The Reach Foundation aims to have impact in communities. Starting in Feltham, the Foundation seeks to have a transformative impact on communities, making them beacons of social mobility and opportunity for young people, and developing evidenced-based best practice for effectively tackling the complex difficulties affecting vulnerable families. It also seeks to provide new models and challenge for the system. Across the range of its activities, the Foundation seeks to influence policy and practice through its well-documented, codified and stress-tested approach to delivering change.

The Foundation has created a cradle to career community hub in Feltham that works alongside Reach Academy Feltham to offer a pipeline of support that enables children and young people to live lives of choice and opportunity, by supporting them to be safe and well supported; healthy; academically successful; and to have strong relationships and networks.

TRUSTEES' REPORT (CONTINUED)
FOR THE PERIOD ENDED 31 AUGUST 2019

Objectives and activities (continued)

c. Activities undertaken to achieve objectives

The Foundation, through the Reach Children's Hub, delivers a range of activities that support young people in Feltham to:

- **Be safe and well supported:** Children and young people are free from harm and know how to keep themselves safe. They are well-supported at home.
- **Be healthy:** Children and young people are physically, socially and emotionally healthy.
- **Achieve well academically:** Children and young people achieve good academic results and leave school prepared for the next stage. Families are actively involved in their education.
- **Have strong relationships and social networks:** Children and young people have strong peer and familial relationships and engage positively with their local community.

The Hub has particular focus on three life stages:

- **Making a great start in life between conception and two:** Ensuring that all children we work with make a great start in life, and their parents have all the support they need to provide a safe, nurturing environment
- **Achieving success at school between two and 16:** Providing the support, guidance, advice and activities that young people and their families need to ensure success in school and positive engagement with their local community
- **Preparing for and pursuing high quality post-school destinations between 16 and 21:** Supporting young people to refine their ambitions, make positive choices about their life after school, and succeed in whichever path they choose, whether that's attending a top University, undertaking a quality apprenticeship, or going straight into the world of work.

d. Main activities undertaken to further the Company's purposes for the public benefit

Over the course of this year, the Foundation has:

- Delivered the Birth and Beyond Community Supporters Programme (in partnership with the National Childbirth Trust)
- Launched the Feltham Early Learning Community
- Delivered a range of youth engagement
- Offered support to young people to identify future career and education options via Feltham Futures
- Provided a range of adult education programmes
- Developed the use of a community farm in Feltham
- Provided Family Support in the community

Achievements and performance

a. Key performance indicators

The Foundation has secured funding that has covered all activities this year and has secured further funding to expand its activities in the coming year. It is in the process of refining its key performance indicators in collaboration with partners at the University of Manchester, New Philanthropy Capital and Collaborate CIC.

TRUSTEES' REPORT (CONTINUED)
FOR THE PERIOD ENDED 31 AUGUST 2019

Strategic report (continued)

Achievements and performance (continued)

b. Review of activities

Between April 2018 and April 2019, The National Childbirth Trust ran their Birth and Beyond Community Supporters project through Reach Children's Hub. The project trains local mothers to act as peer supporters for new mothers in the Feltham and West Hounslow area, helping to reduce social isolation, boost confidence, and ensure that vulnerable new mothers are linked with local support services. The project gets referrals from a range of local services, including health visiting and midwifery. Women have been referred to the project for a variety of reasons, including 25% so that they can be helped to access services; 22% due to poor mental health and 19% due to isolation.

- To date 36 local mothers have completed a 20-hour OCN accredited training programme to become Birth and Beyond Community Supporters, offering peer support to families around Feltham
- Across the country 298 families have been supported since the project went live, with 105 of these being Feltham families.
- "Since completing the NCT Birth and Beyond course, I have been given the opportunity to volunteer at one of our local feeding clinics. This has been so helpful, not only in giving me more confidence in putting everything I have learnt in to practice but also an insight of how useful this programme could be for mums and families in our community." Jo, volunteer in Feltham

Between September 2017 and January 2019 we were able to support Hounslow Council Adult & Community Education team to run a number of Adult Education courses based in Reach Academy. The courses were attended by a mixture of Reach Academy parents and other adults from the local community – the majority of those who undertook the courses were not connected with the school.

- 84 local adults benefited from a Hounslow Adult & Community Education course at Reach Academy through the Hub
- We offered five different courses: Teaching Assistant Level 1, Teaching Assistant Level 2, Maths, English, and ESOL
- Over 20 of those enrolled on the courses were also able to undertake volunteering placements in Reach Academy
- "The course is having a positive impact on my children. I talk English at home with them, I can talk to teachers at school, and I can talk to the Doctor to understand [their] health."

Established at the start of 2018, the Feltham Futures project works at the "top" of the cradle-to-career pipeline, supporting young people to develop an ambitious and clear vision for their future, and to reach the most suitable, highest quality post-school destinations that they can. A dedicated Feltham Futures Coordinator works 1:1 and in groups with students, providing tailored advice, guidance and support, as well as delivering information sessions and careers events for whole cohorts. The project also incorporates programmes delivered by our strategic partners, such as Career Ready and OxFizz. We have also established relationships with widening participation teams from local Universities, and businesses operating both locally and nationally. Feltham Futures is a place-based approach to post-school outcome support for young people across the local community.

Feltham Futures consists of a large range of varied activities, to ensure that as many local young people as possible can engage in projects, opportunities and support which are relevant to and appropriate for their interests and aspirations. Some of the activities are delivered directly by our Feltham Futures Coordinator, and others are delivered by partner organisations.

- In total, the project has engaged over 1000 local young people in at least one activity related to careers, Universities or employability skills.
- The project has engaged students from across four local schools.
- 800 students took part in our Bright Futures Ahead day, meeting volunteers from over 50 organisations

TRUSTEES' REPORT (CONTINUED)
FOR THE PERIOD ENDED 31 AUGUST 2019

Strategic report (continued)

Achievements and performance (continued)

- including British Airways, GSK, Quantumblack, BP and Chelsea Hospital.
- Over 150 students and parents from across 4 schools in Feltham attended our community careers fair, engaging with over 40 future destinations across the corporate, charity and university sectors.
- With the support of the project, 63 Students across Y12 and 13 have independently visited universities in Oxford, Cambridge, Lancaster, Newcastle, Edinburgh, Bath, Surrey and London, both residentially and non-residentially.
- 20 students in Year 11 received 1:1 NEET prevention coaching.
- Thanks to our partnership with Career Ready, 56 students across Reach Academy and Logic School will have undertaken paid work placements for 4-6 periods at organisations such as BP and QuantumBlack.
- 184 students from across Years 11-13 have undertaken a week's work experience supported by Spark, designed to encourage them into successful career pathways.
- 120 students across Years 9 and 10 attended sessions to improve their knowledge of the local labour market, meeting 30 professional volunteers from GSK.

Since September 2017, Reach Children's Hub has been running Girls' Group – a support, empowerment and informal education group targeted at female students who have been identified as at-risk or vulnerable. The group consists of girls aged 14-17, and has undertaken a wide range of activities for the community, including two highly successful International Women's Day events in 2018 and 2019, and a White Ribbon campaign in October 2018 which involved the group helping to distribute domestic violence information into every Hounslow school.

Members of the Girls' Group attended leadership residentials through London Youth at the start of 2019, after which they successfully pitched for £500 of funding to deliver sports activities in the local community. The feedback on the sessions was very positive, and we hope to continue and expand this provision. In addition, between January and April 2019, Hounslow Action for Youth (HAY) ran their Future Stars programme at Reach, for young people aged between 7 and 13. Future Stars is a performing arts programme developed and led by young people from HAY. Young people took part in a range of performing arts workshops including Dancing, Singing, Musical Theatre, Acting, Script Writing and much more.

- So far, the Girls' Group has supported 24 young people, aged between 12 and 17, 17 of whom have been Reach Academy students, and 7 of whom have been from other local schools
- 24 different local young people attended the sports sessions delivered by the Girls' Group using the London Youth funding
- 29 young people attended the Future Stars programme ran by HAY at Reach
- 'We love what we do and deserve to spread the love we have'

Reach Children's Hub have partnered with Save the Children UK to develop an Early Learning Community in Feltham. The project began in September 2018 and is funded for three years, with the overall aim to improve early learning outcomes and school-readiness for children growing up in poverty. The Early Learning Community will achieve this aim through direct delivery of evidence-based interventions, innovating to create new or improve existing services, and by creating the conditions for systems change.

In Year 1, the core project team have engaged the local community in a series of workshops, with support from Save the Children and Dartington Service Design Lab, to develop a theory of change and a strategic plan for the next 2-3 years. We have implemented the following interventions:

- Workforce development: Early Years Network offering free monthly professional development
- Parenting courses: Family Links, Families Connect, Peep 'Learning Together'
- Social groups: Coffee & Crafts, Walk & Talk, holiday activities
- Building Blocks: grants to individual families for early learning packs and household items

The project has attained the following scale:

TRUSTEES' REPORT (CONTINUED)
FOR THE PERIOD ENDED 31 AUGUST 2019

Strategic report (continued)

Achievements and performance (continued)

- We held 7 sessions of the Early Years Network, which were each attended on average by 20 participants from 5 different local settings; that number increased when a specific session interested a wider audience. 56 families engaged with at least one of the parenting courses, which were delivered across 5 local settings; staff in those settings were given follow-up training by the Hub so that they can continue to deliver the courses in-house. 6 parents have also been recruited and trained to deliver the Peep parenting course for 2019-2020.
- 122 children have attended holiday activities with their parents and carers
- 6 families have received a Building Blocks' grant. The Family Nurse Partnership have become a referral partner and will start issuing grants from September and discussions are ongoing with Children's Centres and the health visiting team, which will significantly increase the number of grants that can be issued in the area.
- "The impact [of Families Connect] on parents was beyond what we had expected and as a result we have seen greater parental engagement in all areas of the curriculum since. Our parents are now more confident in supporting their children at home with reading, writing and numeracy, but additionally in supporting their children to express their emotions and name emotions they may not have come across before." – Edward Pauling Primary School

At the Reach Children's Hub, we believe it is essential to engage with a child's whole support network and to build strong relationships with their key adults. We understand that people can experience complex difficulties at any stage of life and that every situation will be different. Therefore, our approach to Family Support is underpinned by a commitment to do whatever it takes to support individual parents and carers and to respond to their particular needs.

Our Family Support worker invests time building relationships based on love and trust, which enables her to effectively support families when they are at their most vulnerable. She currently works closely with the Inclusion Team at Reach Academy and manages referrals to work with specific families. Over the past 12 months, the Family Support worker and Inclusion Team have supported with issues as diverse as housing, immigration, substance abuse and domestic violence.

In addition to working 1:1 with families, our Family Support worker also delivers a range of Family Links' courses, including the Parenting Puzzle, Talking Teens and the Nurturing Programme. Parents and carers are able to contact the Family Support worker directly, as we recognise that the intensity of support required will fluctuate over time and it is important that families do not feel abandoned and are able to contact someone during a crisis or if they need more informal support.

Scale:

- 22 families accessed intensive, sustained support from our Family Support worker.
- 35 families attended a Family Links course at Reach Academy Feltham, with others accessing the courses through our Early Learning Community
- Parents also attended workshops around Healthy Relationships, CSE, Diet and Oral Health and a network for Previously Looked After Children's parents and carers.
- More than 70 families accessed our programme of holiday trips and visits.
- "The Parenting Puzzle course has helped me deal with situations differently by using the strategies we discussed: a more positive attitude and praise. It felt like all the parents who attended had known each other for ages. The sessions were friendly and non-judgemental; a real eye-opener." - parent

THE REACH FOUNDATION
(A Company Limited by Guarantee)

TRUSTEES' REPORT (CONTINUED)
FOR THE PERIOD ENDED 31 AUGUST 2019

Strategic report (continued)

Achievements and performance (continued)

Financial review

a. Going concern

After making appropriate enquiries, the Trustees have a reasonable expectation that the Company has adequate resources to continue in operational existence for the foreseeable future. For this reason, they continue to adopt the going concern basis in preparing the financial statements. Further details regarding the adoption of the going concern basis can be found in the accounting policies.

b. Reserves policy

The Trustees consider the level of reserves on a regular basis and are satisfied these are sufficient as at 31 August 2019.

Structure, governance and management

a. Constitution

The Reach Foundation is registered as a charitable company limited by guarantee and was set up by a Trust deed.

b. Methods of appointment or election of Trustees

The management of the Company is the responsibility of the Trustees who are elected and co-opted under the terms of the Trust deed.

Members' liability

The Members of the Company guarantee to contribute an amount not exceeding £1 to the assets of the Company in the event of winding up.

THE REACH FOUNDATION
(A Company Limited by Guarantee)

TRUSTEES' REPORT (CONTINUED)
FOR THE PERIOD ENDED 31 AUGUST 2019

Statement of Trustees' responsibilities

The Trustees (who are also the directors of the Company for the purposes of company law) are responsible for preparing the Trustees' Report and the financial statements in accordance with applicable law and United Kingdom Accounting Standards (United Kingdom Generally Accepted Accounting Practice).

Company law requires the Trustees to prepare financial statements for each financial period. Under company law the Trustees must not approve the financial statements unless they are satisfied that they give a true and fair view of the state of affairs of the Company and of its incoming resources and application of resources, including its income and expenditure, for that period. In preparing these financial statements, the Trustees are required to:

- select suitable accounting policies and then apply them consistently;
- observe the methods and principles of the Charities SORP (FRS 102);
- make judgements and accounting estimates that are reasonable and prudent;
- state whether applicable UK Accounting Standards (FRS 102) have been followed, subject to any material departures disclosed and explained in the financial statements;
- prepare the financial statements on the going concern basis unless it is inappropriate to presume that the Company will continue in business.

The Trustees are responsible for keeping adequate accounting records that are sufficient to show and explain the Company's transactions and disclose with reasonable accuracy at any time the financial position of the Company and enable them to ensure that the financial statements comply with the Companies Act 2006. They are also responsible for safeguarding the assets of the Company and hence for taking reasonable steps for the prevention and detection of fraud and other irregularities.

Disclosure of information to auditor

Each of the persons who are Trustees at the time when this Trustees' Report is approved has confirmed that:

- so far as that Trustee is aware, there is no relevant audit information of which the charity's auditor is unaware, and
- that Trustee has taken all the steps that ought to have been taken as a Trustee in order to be aware of any relevant audit information and to establish that the charity's auditor is aware of that information.

Approved by order of the members of the board of Trustees on 11/12/19 and signed on their behalf by:



J McGoh
Trustee

INDEPENDENT AUDITOR'S REPORT TO THE MEMBERS OF THE REACH FOUNDATION

Opinion

We have audited the financial statements of The Reach Foundation (the 'charitable company') for the year ended 31 August 2019 which comprise the Statement of Financial Activities, the Balance Sheet, the Statement of Cash Flows and the related notes, including a summary of significant accounting policies. The financial reporting framework that has been applied in their preparation is applicable law and United Kingdom Accounting Standards, including Financial Reporting Standard 102 'The Financial Reporting Standard applicable in the UK and Republic of Ireland' (United Kingdom Generally Accepted Accounting Practice).

In our opinion the financial statements:

- give a true and fair view of the state of the charitable company's affairs as at 31 August 2019 and of its incoming resources and application of resources, including its income and expenditure for the year then ended;
- have been properly prepared in accordance with United Kingdom Generally Accepted Accounting Practice; and
- have been prepared in accordance with the requirements of the Charities Act 2011.

Basis for opinion

We conducted our audit in accordance with International Standards on Auditing (UK) (ISAs (UK)) and applicable law. Our responsibilities under those standards are further described in the Auditor's responsibilities for the audit of the financial statements section of our report. We are independent of the charitable company in accordance with the ethical requirements that are relevant to our audit of the financial statements in the United Kingdom, including the Financial Reporting Council's Ethical Standard, and we have fulfilled our other ethical responsibilities in accordance with these requirements. We believe that the audit evidence we have obtained is sufficient and appropriate to provide a basis for our opinion.

Conclusions relating to going concern

We have nothing to report in respect of the following matters in relation to which the ISAs (UK) require us to report to you where:

- the Trustees' use of the going concern basis of accounting in the preparation of the financial statements is not appropriate; or
- the Trustees have not disclosed in the financial statements any identified material uncertainties that may cast significant doubt about the charitable company's ability to continue to adopt the going concern basis of accounting for a period of at least twelve months from the date when the financial statements are authorised for issue.

THE REACH FOUNDATION
(A Company Limited by Guarantee)

INDEPENDENT AUDITOR'S REPORT TO THE MEMBERS OF THE REACH FOUNDATION (CONTINUED)

Other information

The Trustees are responsible for the other information. The other information comprises the information included in the Annual Report, other than the financial statements and our Auditor's Report thereon. Our opinion on the financial statements does not cover the other information and we do not express any form of assurance conclusion thereon.

In connection with our audit of the financial statements, our responsibility is to read the other information and, in doing so, consider whether the other information is materially inconsistent with the financial statements or our knowledge obtained in the audit or otherwise appears to be materially misstated. If we identify such material inconsistencies or apparent material misstatements, we are required to determine whether there is a material misstatement in the financial statements or a material misstatement of the other information. If, based on the work we have performed, we conclude that there is a material misstatement of this other information, we are required to report that fact.

We have nothing to report in this regard.

Matters on which we are required to report by exception

We have nothing to report in respect of the following matters where the Charities (Accounts and Reports) Regulations 2008 requires us to report to you if, in our opinion:

- the information given in the Trustees' Report is inconsistent in any material respect with the financial statements; or
- sufficient accounting records have not been kept; or
- the financial statements are not in agreement with the accounting records and returns; or
- we have not received all the information and explanations we require for our audit.

Responsibilities of trustees

As explained more fully in the Trustees' Responsibilities Statement, the Trustees (who are also the directors of the charitable company for the purposes of company law) are responsible for the preparation of the financial statements and for being satisfied that they give a true and fair view, and for such internal control as the Trustees determine is necessary to enable the preparation of financial statements that are free from material misstatement, whether due to fraud or error.

In preparing the financial statements, the Trustees are responsible for assessing the charitable company's ability to continue as a going concern, disclosing, as applicable, matters related to going concern and using the going concern basis of accounting unless the Trustees either intend to liquidate the charitable company or to cease operations, or have no realistic alternative but to do so.

THE REACH FOUNDATION
(A Company Limited by Guarantee)

INDEPENDENT AUDITOR'S REPORT TO THE MEMBERS OF THE REACH FOUNDATION (CONTINUED)

Auditor's responsibilities for the audit of the financial statements

We have been appointed as auditor under section 144 of the Charities Act 2011 and report in accordance with the Act and relevant regulations made or having effect thereunder.

Our objectives are to obtain reasonable assurance about whether the financial statements as a whole are free from material misstatement, whether due to fraud or error, and to issue an Auditor's Report that includes our opinion. Reasonable assurance is a high level of assurance, but is not a guarantee that an audit conducted in accordance with ISAs (UK) will always detect a material misstatement when it exists. Misstatements can arise from fraud or error and are considered material if, individually or in the aggregate, they could reasonably be expected to influence the economic decisions of users taken on the basis of these financial statements.

A further description of our responsibilities for the audit of the financial statements is located on the Financial Reporting Council's website at: www.frc.org.uk/auditorsresponsibilities. This description forms part of our Auditor's Report.

Use of our report

This report is made solely to the charitable company's trustees, as a body, in accordance with Part 4 of the Charities (Accounts and Reports) Regulations 2008. Our audit work has been undertaken so that we might state to the charitable company's trustees those matters we are required to state to them in an Auditor's Report and for no other purpose. To the fullest extent permitted by law, we do not accept or assume responsibility to anyone other than the charitable company and its members, as a body, for our audit work, for this report, or for the opinions we have formed.

MHA MacIntyre Hudson
Chartered Accountants
Registered Auditors
2 London Wall Place
London
EC2Y 5AU

Date:

MHA MacIntyre Hudson are eligible to act as auditors in terms of section 1212 of the Companies Act 2006.

THE REACH FOUNDATION
(A Company Limited by Guarantee)

STATEMENT OF FINANCIAL ACTIVITIES (INCORPORATING INCOME AND EXPENDITURE ACCOUNT)
FOR THE PERIOD ENDED 31 AUGUST 2019

	Note	Unrestricted funds 2019 £	Restricted funds 2019 £	Total funds 2019 £	Total funds 2018 £
Income from:					
Donations and legacies	3	20,366	-	20,366	30,000
Charitable activities	4	324,391	40,000	364,391	-
Total income		344,757	40,000	384,757	30,000
Expenditure on:					
Charitable activities	5	355,422	25,000	380,422	16,250
Total expenditure		355,422	25,000	380,422	16,250
Net movement in funds		(10,665)	15,000	4,335	13,750
Reconciliation of funds:					
Total funds brought forward		13,750	-	13,750	-
Net movement in funds		(10,665)	15,000	4,335	13,750
Total funds carried forward		3,085	15,000	18,085	13,750

The Statement of Financial Activities includes all gains and losses recognised in the period.

The notes on pages 14 to 20 form part of these financial statements.

THE REACH FOUNDATION
(A Company Limited by Guarantee)
REGISTERED NUMBER: 06546261

BALANCE SHEET
AS AT 31 AUGUST 2019

	Note	31 August 2019 £	31 March 2018 £
Current assets			
Debtors	9	9,509	-
Cash at bank and in hand		138,856	17,200
		<u>148,365</u>	<u>17,200</u>
Creditors: amounts falling due within one year	10	(130,280)	(3,450)
Net current assets		<u>18,085</u>	<u>13,750</u>
Total net assets		<u><u>18,085</u></u>	<u><u>13,750</u></u>
Charity funds			
Restricted funds	11	15,000	-
Unrestricted funds	11	3,085	13,750
Total funds		<u><u>18,085</u></u>	<u><u>13,750</u></u>

The entity was entitled to exemption from audit under section 477 of the Companies Act 2006.

The members have not required the entity to obtain an audit for the period in question in accordance with section 476 of the Companies Act 2006.

However, an audit is required in accordance with section 144 of the Charities Act 2011.

The Trustees acknowledge their responsibilities for complying with the requirements of the Act with respect to accounting records and preparation of financial statements.

The financial statements have been prepared in accordance with the provisions applicable to entities subject to the small companies regime.

The financial statements were approved and authorised for issue by the Trustees on 11/12/19 and signed on their behalf by:

J McGoh
Trustee



18/12/19

NOTES TO THE FINANCIAL STATEMENTS
FOR THE PERIOD ENDED 31 AUGUST 2019

1. General information

The Reach Foundation is a Charitable Company limited by guarantee and incorporated in England and Wales. Its registered office is 53-55 High Street, Feltham, TW13 4AB.

2. Accounting policies

2.1 Basis of preparation of financial statements

The financial statements have been prepared in accordance with the Charities SORP (FRS 102) - Accounting and Reporting by Charities: Statement of Recommended Practice applicable to charities preparing their accounts in accordance with the Financial Reporting Standard applicable in the UK and Republic of Ireland (FRS 102) (effective 1 January 2015), the Financial Reporting Standard applicable in the UK and Republic of Ireland (FRS 102) and the Companies Act 2006.

The Reach Foundation meets the definition of a public benefit entity under FRS 102. Assets and liabilities are initially recognised at historical cost or transaction value unless otherwise stated in the relevant accounting policy.

2.2 Income

All income is recognised once the Company has entitlement to the income, it is probable that the income will be received and the amount of income receivable can be measured reliably.

Grants are included in the Statement of Financial Activities on a receivable basis. The balance of income received for specific purposes but not expended during the period is shown in the relevant funds on the Balance Sheet. Where income is received in advance of entitlement of receipt, its recognition is deferred and included in creditors as deferred income. Where entitlement occurs before income is received, the income is accrued.

2.3 Expenditure

Expenditure is recognised once there is a legal or constructive obligation to transfer economic benefit to a third party, it is probable that a transfer of economic benefits will be required in settlement and the amount of the obligation can be measured reliably. Expenditure is classified by activity. The costs of each activity are made up of the total of direct costs and shared costs, including support costs involved in undertaking each activity. Direct costs attributable to a single activity are allocated directly to that activity. Shared costs which contribute to more than one activity and support costs which are not attributable to a single activity are apportioned between those activities on a basis consistent with the use of resources. Central staff costs are allocated on the basis of time spent, and depreciation charges allocated on the portion of the asset's use.

Expenditure on charitable activities is incurred on directly undertaking the activities which further the Company's objectives, as well as any associated support costs.

All expenditure is inclusive of irrecoverable VAT.

2.4 Debtors

Trade and other debtors are recognised at the settlement amount after any trade discount offered. Prepayments are valued at the amount prepaid net of any trade discounts due.

NOTES TO THE FINANCIAL STATEMENTS
FOR THE PERIOD ENDED 31 AUGUST 2019

2. Accounting policies (continued)

2.5 Cash at bank and in hand

Cash at bank and in hand includes cash and short-term highly liquid investments with a short maturity of three months or less from the date of acquisition or opening of the deposit or similar account.

2.6 Liabilities and provisions

Liabilities are recognised when there is an obligation at the Balance Sheet date as a result of a past event, it is probable that a transfer of economic benefit will be required in settlement, and the amount of the settlement can be estimated reliably.

Liabilities are recognised at the amount that the Company anticipates it will pay to settle the debt or the amount it has received as advanced payments for the goods or services it must provide.

Provisions are measured at the best estimate of the amounts required to settle the obligation. Where the effect of the time value of money is material, the provision is based on the present value of those amounts, discounted at the pre-tax discount rate that reflects the risks specific to the liability. The unwinding of the discount is recognised in the Statement of Financial Activities as a finance cost.

2.7 Financial instruments

The Company only has financial assets and financial liabilities of a kind that qualify as basic financial instruments. Basic financial instruments are initially recognised at transaction value and subsequently measured at their settlement value with the exception of bank loans which are subsequently measured at amortised cost using the effective interest method.

2.8 Fund accounting

General funds are unrestricted funds which are available for use at the discretion of the Trustees in furtherance of the general objectives of the Company and which have not been designated for other purposes.

Restricted funds are funds which are to be used in accordance with specific restrictions imposed by donors or which have been raised by the Company for particular purposes. The costs of raising and administering such funds are charged against the specific fund. The aim and use of each restricted fund is set out in the notes to the financial statements.

3. Income from donations and legacies

	Unrestricted funds 2019 £	Total funds 2019 £	Total funds 2018 £
Grants	20,366	20,366	30,000

THE REACH FOUNDATION
(A Company Limited by Guarantee)

NOTES TO THE FINANCIAL STATEMENTS
FOR THE PERIOD ENDED 31 AUGUST 2019

4. Income from charitable activities

	Unrestricted funds 2019 £	Restricted funds 2019 £	Total funds 2019 £
Restricted grants	324,391	40,000	364,391
Total 2018	-	-	-

5. Analysis of expenditure on charitable activities

Summary by fund type

	Unrestricted funds 2019 £	Restricted funds 2019 £	Total funds 2019 £	Total funds 2018 £
Direct costs	355,422	25,000	380,422	16,250
Total 2018	16,250	-	16,250	

6. Analysis of expenditure by activities

	Activities undertaken directly 2019 £	Support costs 2019 £	Total funds 2019 £	Total funds 2018 £
Direct costs	375,942	4,480	380,422	16,250
Total 2018	15,050	1,200	16,250	

NOTES TO THE FINANCIAL STATEMENTS
FOR THE PERIOD ENDED 31 AUGUST 2019

6. Analysis of expenditure by activities (continued)

Analysis of support costs

	Activities 2019 £	Total funds 2019 £	Total funds 2018 £
Office costs	967	967	-
Other support costs	1,263	1,263	-
Governance costs	2,250	2,250	1,200
Total 2019	4,480	4,480	1,200

7. Auditor's remuneration

The auditor's remuneration amounts to an auditor fee of £2,250 (2018 - £1,200).

8. Trustees' remuneration and expenses

During the period, no Trustees received any remuneration or other benefits (2018 - £NIL).

During the period ended 31 August 2019, no Trustee expenses have been incurred (2018 - £NIL).

9. Debtors

	31 August 2019 £	31 March 2018 £
Due within one year		
Other debtors	9,509	-
	9,509	-

10. Creditors: Amounts falling due within one year

	31 August 2019 £	31 March 2018 £
Trade creditors	67,687	-
Accruals and deferred income	62,593	3,450
	130,280	3,450

THE REACH FOUNDATION
(A Company Limited by Guarantee)

NOTES TO THE FINANCIAL STATEMENTS
FOR THE PERIOD ENDED 31 AUGUST 2019

11. Statement of funds

Statement of funds - current period

	Balance at 1 April 2018 £	Income £	Expenditure £	Balance at 31 August 2019 £
Unrestricted funds				
General Funds - all funds	13,750	344,757	(355,422)	3,085
	<hr/>	<hr/>	<hr/>	<hr/>
Restricted funds				
Mohn Westlake Foundation	-	40,000	(25,000)	15,000
	<hr/>	<hr/>	<hr/>	<hr/>
Total of funds	13,750	384,757	(380,422)	18,085
	<hr/>	<hr/>	<hr/>	<hr/>

Restricted funds relate to the MOD project surrounding the provision of a second school for the Academy Trust.

THE REACH FOUNDATION
(A Company Limited by Guarantee)

NOTES TO THE FINANCIAL STATEMENTS
FOR THE PERIOD ENDED 31 AUGUST 2019

11. Statement of funds (continued)

Statement of funds - prior period

	Income £	Expenditure £	Balance at 31 March 2018 £
Unrestricted funds			
General Funds - all funds	30,000	(16,250)	13,750

12. Summary of funds

Summary of funds - current period

	Balance at 1 April 2018 £	Income £	Expenditure £	Balance at 31 August 2019 £
General funds	13,750	344,757	(355,422)	3,085
Restricted funds	-	40,000	(25,000)	15,000
	<u>13,750</u>	<u>384,757</u>	<u>(380,422)</u>	<u>18,085</u>

Summary of funds - prior period

	Income £	Expenditure £	Balance at 31 March 2018 £
General funds	30,000	(16,250)	13,750

NOTES TO THE FINANCIAL STATEMENTS
FOR THE PERIOD ENDED 31 AUGUST 2019

13. Analysis of net assets between funds

Analysis of net assets between funds - current period

	Unrestricted funds 31 August 2019 £	Restricted funds 31 August 2019 £	Total funds 31 August 2019 £
Current assets	133,365	15,000	148,365
Creditors due within one year	(130,280)	-	(130,280)
Total	3,085	15,000	18,085

Analysis of net assets between funds - prior period

	Unrestricted funds 31 March 2018 £	Total funds 31 March 2018 £
Current assets	17,200	17,200
Creditors due within one year	(3,450)	(3,450)
Total	13,750	13,750

14. Related party transactions

There were no related party transactions during the period.

MHA MacIntyre Hudson
New Bridge Street House
30-34 New Bridge Street
London
EC4V 6BJ

Dear Sirs

CONFIRMATION OF REPRESENTATIONS

This representation letter is provided in connection with your audit of the financial statements of The Reach Foundation for the year ended 31 August 2019. We note that your audit was performed for the purpose of expressing an opinion as to whether the financial statements give a true and fair view of the financial position of The Reach Foundation as of 31 August 2019 and of the results of its operations for the year then ended in accordance with the UK GAAP financial reporting framework.

We confirm to the best of our knowledge and belief that the following representations are made on the basis of having made appropriate enquiries of other trustees and officials of the charity with relevant knowledge and experience (and, where appropriate, of inspection of supporting documentation) sufficient to satisfy ourselves that the following representations can be properly given to you in connection with your audit of the charity's financial statements:

1. General

We have fulfilled our responsibilities as trustees, as set out in the terms of your engagement letter under the Companies Act 2006 for preparing financial statements which give a true and fair view in accordance with applicable law and UK GAAP and for making accurate representations to you. All the accounting records have been made available to you for the purpose of your audit and all the transactions undertaken by the charity have been properly reflected and recorded in the accounting records. All other records and related information, including minutes of trustees', members' and management meetings, have been made available to you. We have not withheld any information, the knowledge of which could cause you to take a materially different view in your report. The financial statements are free of material misstatements, including omissions.

2. Internal control and fraud

We acknowledge our responsibility for the design, implementation and maintenance of internal control systems to prevent and detect fraud and error. We have disclosed to you the results of our assessment of the risk that the financial statements may be materially misstated as a result of fraud.

3. We are not aware of any irregularities involving management, employees who have a significant role in internal control, volunteers or anyone else where those irregularities could have a material effect on the financial statements.

4. We confirm we have disclosed to you all information in relation to allegations of fraud or suspected fraud affecting the charity's financial statements communicated by current or former employees, analysts, regulators or others.

5. Audit adjustments

We have made adjustments, as requested by you, for all misstatements identified by your audit.

6. Going concern

We believe that the charity's financial statements should be prepared on a going concern basis on the grounds that current and future sources of funding or support will be adequate for the charity's needs. We have considered a period of twelve months from the date of approval of the financial statements. We believe that no further disclosures relating to the charity's ability to continue as a going concern need to be made in the financial statements.

7. Law and regulations

We are not aware of any events which involve possible non-compliance with statute, regulations, contracts, agreements or the company's Memorandum and Articles of Association which might prejudice the charity's going concern status or that might result in the charity suffering significant penalties or other loss.

8. Assets and liabilities

The charity has satisfactory title to all assets and there are no liens or encumbrances on the charity's assets, except for those that are disclosed in the notes to the financial statements.

9. We have recorded or disclosed, as appropriate, all liabilities, both actual and contingent and have disclosed in the notes to the financial statements all guarantees that we have given to third parties.

10. We have no plans or intentions that may materially alter the carrying value, and where relevant, the fair value measurements or classification of assets and liabilities reflected in the financial statements.

11. Accounting estimates

Significant assumptions used by us in making accounting estimates, including those measured at fair value, are reasonable.

12. Loans and arrangements with officers

The charity has not granted any advances or credit facilities, or made guarantees on behalf of, directors or trustees other than those disclosed in the financial statements.

13. Legal claims

All claims in connection with litigation that have been, or are expected to be, received have been properly accrued for in the financial statements.

14. Ultimate controlling party

There is no controlling party.

15. Transactions with related parties

Related party relationships and transactions have been appropriately accounted for and disclosed in the financial statements. We have disclosed to you all relevant information concerning such relationships and transactions and are not aware of any other matters which require disclosure in order to comply with the requirements of the Companies Act 2006, Charities Act 2011 or accounting standards.

16. Events after the balance sheet date

All events subsequent to the date of the financial statements which require adjustment or disclosure have been properly accounted for and disclosed.

17. Grants and donations

All grants, donations and other income, the receipt of which is subject to specific terms or conditions, have been notified to you. There have been no breaches of terms or conditions during the period in the application of such income.

Restricted grants and donations are as follows:

The Mohn Westlake Foundation
KPMG Foundation

18. Electronic publication of accounts

We do not intend to distribute or publish the financial statements in electronic form

19. We acknowledge our legal responsibilities regarding disclosure of information to you as auditors and confirm that:

- so far as each director is aware, there is no relevant audit information of which you as auditors are unaware, and
- each director has taken all the steps that they ought to have taken as a director to make themselves aware of any relevant audit information and to establish that you are aware of that information.

Yours faithfully



...Jon McGoh.....

Signed on behalf of the trustees

Date of approval of accounts by Board: ...11/12/19.....

