



EASTERN RAVENS

*"Supporting Children, Young People
& Families for over 50 years"*



Eastern Ravens Trust

Annual Report

2018 - 2019

Annual Report Year Ended 31st March 2019

Contents	Page
Chairperson's Report	3
Trust Manager's Report	4
Open Access Youth Provision	6
Reducing Crime & Anti-Social Behaviour	8
Roseworth Summer Programme	10
Young Carers Support Service	11
Awareness Raising	17
Building Blocks – Enhanced Support for Young Carers	22
Acknowledgements & Thanks	23

Registered Charity No: 519907
Company No: 02206156

Chairperson's Report

This is my twelfth annual report as Chair of the Trust and I am delighted to convey that we have had a further successful year in terms service delivery and funding. Like many VCSE organisations, new funding streams, particularly for core costs, are harder to secure but we remain in control of our financial viability.

Some of this year's achievements include:

- Confirmation of a 3-year contract with Stockton-on-Tees Borough Council to deliver the Young Carers Support Service effective 01.10.18.
- Additional funding to extend the dedicated young carers counselling service for another 6 months in partnership with ABC Counselling, Play Therapy & Family Solutions.
- Continuing as a delivery partner for Youth United Stockton for a further 12 months.
- Successful application to Santander's Discovery Grant programme to provide cooking workshops.
- Successful application to Middlesbrough & Teesside Philanthropic Foundation to deliver 'Young Carers Take a Break'.
- Continued delivery of the Youth Investment Fund open access youth provision in partnership with North Shore Academy.
- Providing Roseworth Big Local's children and young people's summer holiday programme in partnership with EPIC Teesside CIC and Involve Tees Valley.
- Surprise donation of £6745 from the workplace of a parent who is supported by the young carers service.
- At the end of this year, confirmed funding from The Ballinger Charitable Trust of £16k per annum for three years towards the core costs of the organisation.

None of this continued success would be possible without the hard work and commitment of many people – not least paid staff, volunteers, funders and Directors. On behalf of the children, young people and families who benefit from this, I again offer a simple but sincere 'Thank You' and urge you all to keep up the good work.

Jim Beall

Trust Manager's Report

What a remarkable year 2018 - 2019 has been for the Trust with such a lot happening and some new developments too. The main highlight of the year was the award of a 3-year contract from the local authority to continue providing the Young Carers Support Service. The staff team and I were overjoyed at the news which takes us into our 19th successful year of service delivery to young carers and their families. I was also delighted with the news that the dedicated young carers counselling service delivered in partnership with ABC Counselling, Play Therapy and Family Solutions was to be extended for a further 6 months from October to March. The service has made such a positive difference to young carers' lives.



Promoting our work on young carers' emotional health and well-being and sharing good practice has formed a part of my work this year and I was honoured to be invited to speak at a Westminster Briefing in London alongside national charities Carers Trust and The Children's Society. I also provided a presentation at the local authority's People Select Committee Mental Health and Wellbeing review and Teesside University's School of Health & Social Care Public Health Day for school nursing, health visiting and occupational health students.

Open access youth provision has once again remained an integral part of the organisation's offer. Funded jointly by the Youth Investment Fund (YIF) and Youth United Stockton, children and young people have taken part in a menu of interventions during term time and programmes of school holiday activities which supports their personal and social development. The YIF learning events and webinars have provided a great opportunity to increase my knowledge around the theory of change and the importance of measuring impact. Jan Brown took over the lead role in September and we also welcomed Barbara Hampson, Emma Hayes, Phillippa Oliphant and Gordon Wills to the team.

Partnership work has remained a key component of the Trust's success and we have gone from strength to strength. Following the end of the work with young people at risk of crime/anti-social behaviour via The 1989 Willan Charitable Trust, EPIC Teesside CIC, Involve Tees Valley and Eastern Ravens Trust worked together to develop a summer activity programme, including consultation with young people for Roseworth Big Local.

The findings from the work were reported back to the Roseworth Big Local Board with the aim of supporting and shaping future services for children and young people within the year.

Our new partnership with Tilery Primary School is focussed upon school holiday hunger/enrichment and supports the development of relationships with children from the disadvantaged community where we are based. The project also serves as a vehicle to signpost older children to our open-access youth provision and the opportunity to identify unknown young carers.



We continued to work with ARC Stockton which led to us working alongside a music developer and the production of a young carers song (see page 12 for more information). At the end of this reporting period we embarked upon a new project with ARC and a small group of performing arts students. I'm looking forward to seeing the end result in a few months' time.

We have once again continued with our fundraising to add value to our services and enhance our offer to children and young people. This year we chose to raise funds to enable young carers to attend the National Young Carers Festival in Southampton and



provide additional fun opportunities during school holidays. Our thanks go to parents, carers, family members and Virgin Media Teesside for their help in preparing our Christmas gifts to sell at Stockton Sparkles and to Natalie Trainer, Blackwell's Butchers Norton, the Roundel Thornaby, Catholic Club Billingham and Stockton West End Bowling Club who all dedicated time and/or space to support us.

I hope you enjoy reading the remainder of our annual report and gain a greater understanding into the work we undertake in supporting isolated and disadvantaged children, young people and families. I am so proud to be running an organisation that truly makes a difference to the lives of those in our Borough. Thank you to the Board of Directors for your ongoing support, dedication and commitment and thanks also to the staff team, this wouldn't be possible without your perseverance, enthusiasm and devotion. Together we are Eastern Ravens Trust, together we change lives. Thank you all.

Tracey Hamilton

Open Access Youth Provision

Our projects are funded by The National Lottery's Youth Investment Fund, a jointly funded programme with the Department for Culture Media and Sport alongside a service level agreement with Youth United Stockton which is the open access youth provision in the Stockton-on-Tees Borough. Serving the communities of Tilery, Portrack, Roseworth, Norton North and delivered from our base in the Community Zone, this year we have seen an increase in the numbers of young people accessing to 162 with between 15 and 45 attending each session.

The sessions are held 3 times per week during term time and young people have enjoyed meeting others and making new friends while taking part in a menu of activities indoors and outdoors. The activities are altered at each session to add variety and include pool competitions, art & crafts, table tennis, traditional board games, football, badminton and basketball.

***It's good,
keeps me
active & lots
of activities***




During the school holidays, young people have taken part in a range of additional social and learning opportunities that they would not normally have the chance to experience. This year has included fishing with The Angling Trust, paint-balling, laser tag, fun at the trampoline park, solving puzzles and riddles at the Escape Rooms and ice-skating.

November saw young people taking part in a 6-week cooking project to develop skills and learn how to prepare and cook healthy meals with Little Sprouts Health & Wellbeing. The young people genuinely appreciated the sessions and have fed back that they would like to do it again next year.

Prior to breaking up for the festive period, young people experienced a Christmas party 'with a difference'. They took part in rodeo bull challenges, had fun on the bouncy castle/inflatable slide and of course some Christmas fare. It was so good to see their smiling faces as they joined in and had fun together.

In January, we began working with Musinc, a musical inclusion project that works with young people from challenging backgrounds to support learning and the development of new skills. The young people learned how to make music using a variety of tools including plastic buckets and i-pads.

In ensuring young people are involved in project design/delivery, the steering group has also progressed well within this year. To support the group to develop improved relationships, we facilitated a 2-day residential where young people took part in a programme of teambuilding activities such as bottle rockets, abseiling and obstacle challenge. The group thoroughly enjoyed their residential.



***It has been
brilliant and a
great
experience***

During steering group meetings throughout the year, young people highlighted the following areas that they would like to change and improve:

- New equipment e.g. footballs, pool table, air hockey table
- Session times and days need to change – the different times are confusing
- Do some sessions differently e.g. quiz nights, movie nights, themed nights
- Social media to promote the project/sessions
- Residential
- Behaviour – implement a strike system
- Tuck shop up and running.

As a result of the issues raised, open access sessions changed to Monday, Tuesday and Thursday each at the same time 5-7pm. We were also able to broker involvement with Middlesbrough Football Foundation's #iwill project to implement their tuck shop. Young people costed the content, agreed pricing for sales and took a visit to a local warehouse to purchase their products. #iwill fully funded the initial outlay of the tuck shop for the young people.

Overall, the open access youth sessions have worked well and we have developed excellent relationships with young people. The team of youth work staff particularly appreciate conversations with young people around issues that are affecting them in their personal lives and are able to offer a listening ear and signposting to other services where required.

Reducing Crime and Anti-Social Behaviour

A small grant from the 1989 Willan Charitable Trust enabled us and our partners to explore and trial an innovative project which supported young people and families from the most deprived wards of Stockton-on-Tees with the overall aim of reducing crime and anti-social behaviour.

The project was developed to meet the needs of young people who were unable to take part in open access youth provision due to their conduct and behaviour. The initial outreach/mobile sessions were delivered by Primrose Hill Football Club in the Tilery/Portrack/Norton areas building upon the existing relationships of the partnership. We used sport, in particular football to target young people through local intelligence of those involved in anti-social behaviour in the communities and the Town Centre.

The first group we worked with were a group of males aged 13-15 from the Tilery & Portrack community. We met with them at a centre away from our base and engaged them in football, environmental activities and water sports which also included raising money for a local community group. The boys formed their own identity and became known as the Lustrum Lads and through their involvement with us, volunteered in testing for nitrates as part of a National Survey by the Environmental Agency. The group were successfully re-integrated back into open access youth provision. Two of the group continued to engage and volunteered their time during the school summer holiday programme delivering football coaching to 8-12 year olds and at the end of the summer, they joined other young people and became trained as peer mentors.

The mobile provision was then moved to the Low Grange area of Billingham and following the initial 6 weeks' engagement a group of 12 young people began to access activities at Charlton's Pond, a local nature reserve. The group participated in angling and environmental activities which included building fish havens to prevent predation of fish stocks by non indigenous birds. Six of the group, who range from age 12-16 have gone on to support family fun days at the pond and have supported groups from the national charity Forward Assist which included helping disabled veterans at river and sea fishing.

Following Billingham, we moved provision to Primrose Hill, an area blighted by drug dealing and gang rivalry. The area also saw the arrival of 70 migrant families due to the demolition of town centre housing. The centre for the community had closed 7 years previously as such there was no focal point or youth activities for young people.

We were able to engage young people and families through our project and some young people joined the local football club. Young people also took part in school holiday activities. This small grant has led to many positive outcomes for young people in taking a different path in their lives. Moreover, it has helped to develop the Primrose Hill Community Partnership, the re-opening of the community centre and further work in the Roseworth community.

Roseworth Summer Programme

Eastern Ravens Trust has worked in the Roseworth community on various projects since 2012 and we were delighted to once again provide a summer programme for Roseworth Big Local (RBL) working in partnership with EPIC Teesside CIC and Involve Tees Valley CIC this year. The brief included holiday interventions and non-formal consultation with young people using youth work styles/approaches through activities and conversations to discover young people's aspirations within:

- Employment
- Education
- Training
- Health
- Leisure.



An online questionnaire via survey monkey was created to ensure all staff had a structured approach to base their conversations/discussions. Activities included water sports activities, air trail, go climb and pop up youth club sessions with the youth bus at the multi-use games area on Rochester Road.

Examples of the findings as reported to the RBL Board:

- Notable difference between boys and girls, a real gender imbalance.
- Observations regarding attitudes - girls more focused and aware of options. Boys less likely to have ideas or less prepared to talk about them.
- Gender specific examples – boys: football, boxing, mechanics; girls: hair dresser, artist, dentist.
- Not enough to do.
- All activities are for [younger] kids on the estate, they have no place of their own.
- Skate park.
- Astro pitch.

We look forward to continuing our work in the Roseworth Community in the coming year and being able to support RBL further in their opportunities for young people and the community as a whole.



Young Carers Support Service

This service remains an integral part of our work here at the Trust and we began the year supporting 153 young carers aged 5 to 18 and their families. Over the following 12 months we received another 126 new referrals from professionals, family members, schools, colleges and health services. Our key workers manage caseloads of 50-60 young carers and their families at any one time with tiered services supporting the management of those caseloads. The service provides a menu of support which is tailored and specific to each individual household with the overall aim of identifying and addressing unmet needs which result in a child/young person undertaking a caring role.

Young carers are children and young people who provide regular and ongoing physical and emotional care, personal care or practical support to a family member(s) who is physically or mentally ill or who is disabled or misuses substances. Children and young people in a caring role undertake physical and emotional tasks which are often inappropriate for their age, this can include cooking, cleaning, doing the laundry and sitting with the person they care for. Although caring at a young age can be a positive experience, national research, our local knowledge and assessments tell us that young carers feel lonely, sad, stressed out and often struggle to cope.

Access to the service is via referral or Early Help Assessment/Involvement Form. The team holds weekly allocation meetings to discuss and disseminate new referrals, the only exception is where a young carer is identified as being at 'crisis point' and the referral is responded to within 24 hours.

Young Carers

Taking time out from caring is extremely important to young carers and this year we have had lots of positive activities taking place to support their emotional health and wellbeing. During term time, the drop-in's have included movie nights, art & craft sessions, indoor and outdoor games, sports and also a visit from 3 Local Authority Councillors in listening to the voice of the child. During Easter, February, May and October half-term holidays young carers took part in a number of local and regional off-site experiences similar to their peers and cooking workshops delivered by Little Sprouts Health & Wellbeing funded by the Santander Foundation.



The six-weeks summer holidays also saw young carers taking part in a programme of activities and for the majority, we provided a healthy lunch to combat holiday hunger. The national media reported how young carers are especially lonely and isolated during school holidays and we understand this can be a very stressful time for parents/carers, especially trying to find additional funds for a packed lunch when the child/young person is in receipt of free school meals. For some young carers, our holiday programme is the only time they will leave the house and experience several hours of freedom and fun from their caring role. For parents/carers, it is a relief to see their children having something to look forward to, knowing they can take part in activities that they cannot provide themselves.

The national Young Carers Festival (YCF) takes place each year at YMCA Fairthorne Manor in Southampton. The festival is home to around 1500 young carers who travel from all over the country to attend. Following our fundraising, we were able to take 17 young carers this year but before we got there, young carers worked for 5 weeks with a music developer to write their own song:

*“Optimism is the key, to be who we need to be
We are loved, we are one, we believe in everyone
We’ve got you covered every step of the way
We will do this every day
Love and care is the key, to our positivity
Unity, I’m all about it
Community, what about it?
We are one like a family
Friendship means loyalty
My friends, encourage me
Opportunity to be me
We stick together coz we are young carers - that’s forever.”*

The song was developed into a rap and the group performed it live at YCFM, the radio station on the festival site. The group were very proud of their performance which also received a lot of positive attention from other groups. The theme for the festival was ‘I’m here, right here – stand up and be counted’ so in true YCF style we also broke a world record for the most arm-linked people to stand up simultaneously. This and the variety of activities on offer including a silent disco, climbing wall, fairground rides, water sports, karaoke, live music and the biggest opportunity for young carers to have their voices heard, made for an amazing weekend.

Feedback from the weekend includes:

It's made me feel more confident in myself

Attending the festival has been a massive stress reliever & helped me make new friends

It's made me realise even though we are young carers, we can still have fun

It has made me a lot more confident to say who I care for and I am a young carer

Residential Activity – Peat Rigg

We have once again been fortunate to receive a free residential for 3 days at Peat Rigg Outdoor Centre via the Cohen Fund. Thirteen young carers aged 8-11 attended and they truly embraced the opportunity as they took part in archery, tarzan swing, night line, zip wire and low ropes challenges. Although excited for the opportunity, staff observed the usual anxieties around being away from home, which for some was the first time. One of the boys was extremely reluctant to attend. His mum is constantly ill, has multiple seizures and is regularly in hospital. He sits with her every day, rarely plays out and often misses out on the drop-in sessions as he just wants to be by her side. With support and encouragement, he agreed to attend the residential. However, he found it extremely difficult and was very emotional. We arranged for him to telephone his mum as many times as he wanted to which gave him the reassurance that he needed to stay and take part. During the residential he tried new foods, new drinks (he would only drink apple juice & pepsi) and lots of exciting new activities. He came home from Peat Rigg with a newfound sense of confidence and his Mum was extremely proud of everything he had achieved.



Whilst we understand that not all young carers require facilitated access to respite breaks due to hobbies and friendship groups in their communities, our provision is flexible and tailored. Throughout the year we have also provided advocacy, supported access to appointments, one to one sessions and low level emotional support with key issues which are impacting upon their lives.

Knowledge & Skills

Our learning opportunities this year have included Food Safety Level 2 and for one young carer this qualification was the stepping stone to an increase in pay from minimum wage at her part-time job at a soft play centre. The British Red Cross delivered basic first aid to 28 young carers and CAMHS came along and delivered some sessions to enable a better understanding of living with a family member with autism/mental health illness.

Family Support

The service helps the whole family, not just the young carer & the cared for person. Support is tailored and bespoke to each household which enables more success in improving outcomes for the young carer. The impact is much greater where we are successful in developing trusting relationships and where we can advocate involvement with external agencies to support the family holistically, this is where great results can be seen. Some of the agencies we have signposted/referred to are:

- Adult Social Care
- Butterwick Hospice
- Children's Social Care
- Eden Project
- Insight – Somewhere Else
- Justice First
- Rhema Church
- SBC Housing
- Step Forward Tees Valley
- Youth Direction

Case Study 1:

JA's mum's physical health has gradually deteriorated over the past year and mum was initially reluctant to accept a referral to adult social care for support as she never considered her health to be poor enough to need outside care. With encouragement, mum allowed her key worker to submit a referral on the understanding that she could refuse if she felt extremely uncomfortable. Mum now reports that 'her life has been transformed, having a carer means so much'.

'The carer does all the house work and keeps the place clean, she takes me to appointments which I need to go to but often avoided due to stress & worry'. 'It has given me a new hope'.

Case Study 2:

J was in a caring role for her grandparent who had special guardianship following time in care after being removed from her mum. Grandparent suffered from a range of physical illnesses which resulted in very poor mobility; she also experienced debilitating migraines. When J was referred to the service we discovered that she has been very socially isolated for a number of years. Our support plan involved J coming along to respite and holiday sessions to help her with her confidence around her peers and referrals to adult social care and occupational therapy for grandparent. This resulted in several adaptations which included a stair lift, ramps and powered wheelchair. J has grown in confidence, she has a social network of friends and now attends girl guides and a performing arts group every weekend, grandparent's health has stabilised. J stated that she wants others to have the support that her and her grandparent have had. Both J and grandparent thanked us for our help and support.

Case Study 3:

ED is in a primary caring role for her mum who has depression and has experienced domestic violence (which ED has witnessed). ED has provided emotional support to her mum for a number of years, she states that she has had to be the parent in the home. ED was referred to the service due to her lack of self-confidence/self-esteem, staying at home and not wanting to socialise which was having a negative impact on ED.

This has been a very difficult family to engage to the service. Mum would not agree to a home visit therefore consent was obtained to undertake the young carers assessment in school. ED had an awful attitude towards the Key Worker initially, however, this changed when it was explained that the service is voluntary and ED does not have to engage if she does not want to. ED completed her young carers assessment and then encouraged mum to allow the Key Worker to undertake the whole family assessment at home. ED now accesses the young carers drop-in and one to one support where required. ED has agreed to a referral for therapeutic support with our dedicated young carers counselling service.

The key working role involves close working with other professionals and throughout the year the team have regularly attended Early Help, Child in Need meetings, Core Groups, Initial and Review Child Protection Conferences in supporting families. Key workers have also provided support for parents/carers to access appointments e.g. GP, Community Psychiatric Nurses, Personal Independence Payment medicals and probation meetings.

Improving Identification

We have continued to raise the profile of young carers with organisations and teams who are in an excellent position to identify unknown and unsupported young carers. Our approach continues to be bespoke to each agency and can vary from a 2-hour formal presentation to an informal 10-minute discussion. Some of this year's examples include 2 x 20 minute workshops with social work teams and a full morning with SNAPs (Special Needs Activities with Parents Support).



***Eastern Ravens
provided excellent
information &
hearing from the
young carer was
effective***

***Very informative
and useful for
future referrals***

For young carers awareness day on 31.01.19, we held a drop-in for professionals/agencies to increase their knowledge and strengthen their working practice in relation to young carers. The session was attended by 24 individuals from various agencies which included:

- Adult Services Operational Lead
- Bridges Family Centre
- Catalyst
- CGL – Stockton Recovery Service
- Early Help Team
- Graded Care Coordinator
- Oakdene Primary School
- Occupational Therapists including Housing
- Principal Social Worker
- St John the Baptist Primary
- SBC Family Workers
- Student Social Workers
- Teeswide Safeguarding Adults Board
- Tilery Primary School

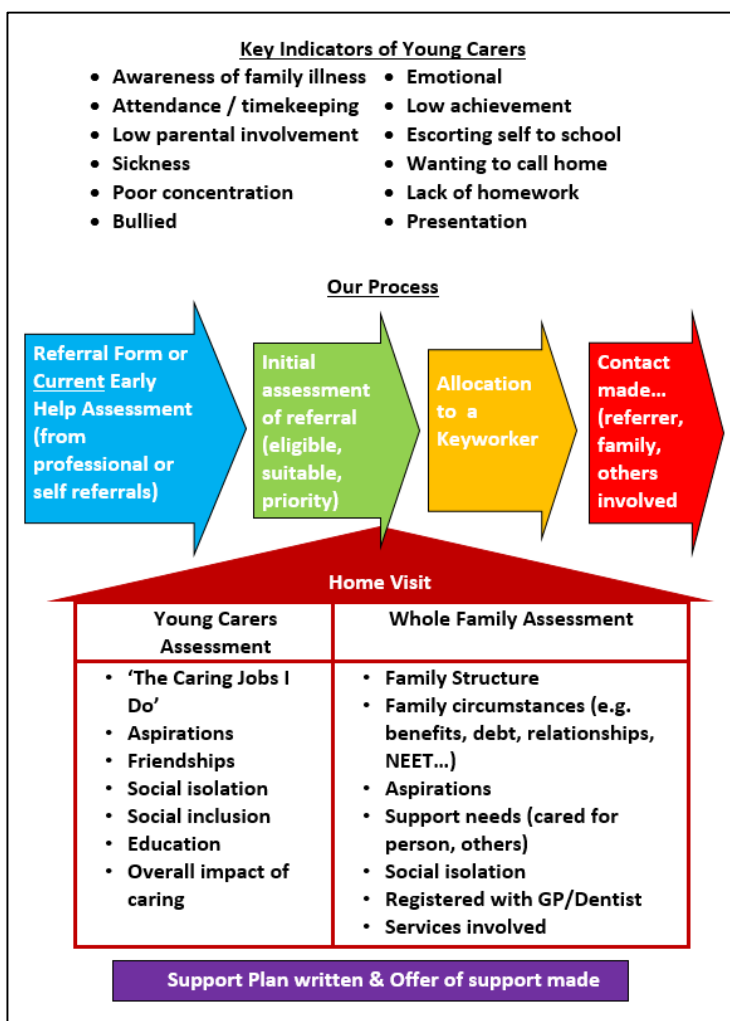
We have also attended a number of events with our information stand - Living with & Beyond Cancer, health & wellbeing with Stockton Riverside College and World Social Work Day. Our work to improve the identification of young carers has led to a number of referrals from agencies who have previously never referred into the service before.

Awareness Raising - Education

As always we continue to build strong, co-operative, supportive and professional links with schools. This year we have worked directly in 9 different schools delivering 9 whole school assemblies, 7 more in depth workshops and 3 twilight staff team training sessions. One of the twilight sessions included staff from several schools within an academy group. This equates to approximately 2700 pupils and over 100 staff.

The sessions serve to increase the general awareness of young carers and what they do, for both young people and staff; potentially increasing referrals and the identification of young carers. It has also been identified by young carers themselves, that such sessions can also make it easier for them to discuss their own caring role with staff and sometimes with their peers in school. Several referrals have highlighted that awareness was raised in school with the referral coming in as a direct result. In one case a child answered a question during assembly which made staff aware of her situation.

Staff twilight (early evening) sessions have been something we have encouraged for schools to access and they have gone really well with lots of discussion and positive feedback. We cover the signs to look for, the possible impacts on the young carer and examples of how we have supported families with positive outcomes. We also outline our referral process & criteria. Feedback from one school stated *'Many thanks for leading the training session for us last night. Everyone found it very useful and following the meeting there was quite a bit of discussion around pupils who staff have suspicions about. They are going to investigate further and if necessary send in a referral so it was genuinely very useful'*



We have also attended and delivered a session at a team meeting for the local authority's attendance team (including home school monitoring service) which has led to several referrals for home schooled young carers for the first time.

This year we introduced a follow up to our work in schools in the format of some text or the image below which can be used by schools on websites, facebook/twitter feeds and in newsletters. Schools have used it to inform parents about our visit & our service.

Stockton Young Carers Support Service

Young carers are children & young people aged 5 -18 who look after their family members for a number of reasons. This could be because of ill health, disability, learning difficulties and/or drug/alcohol misuse.

Eastern Ravens Trust can provide support and respite activities for young carers & also help the whole family.

If a child or young person in your family could be a young carer you can contact us or speak to someone in school.



Young Carers in Schools Award

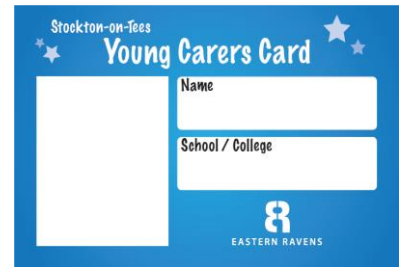
At the invite of Carers Trust, we took 4 young carers to North Shields for a day event of Quality Assurance for the Young Carers in Schools Award where we met with other young carers from across the north east. Their role was to assess a sample of submissions from schools across the country to be considered for the award. The young people contributed well throughout the day and each of them said it would be a good thing for their school to consider. They all got to see that young carers are a national issue & the things which affect them are the same as many others. Upon our return, one young carer spoke to his head teacher at Conyers School, Yarm and gave her a presentation about the award & how it would help others in school who are young carers like himself. Subsequently, we were approached by a member of staff to discuss this further. Since March 2019, we have been intensively supporting the school towards achieving the young Carers in Schools award which has included:

- Supporting the lead staff member
- Baseline assessment of current provision
- Provision of materials for display boards.

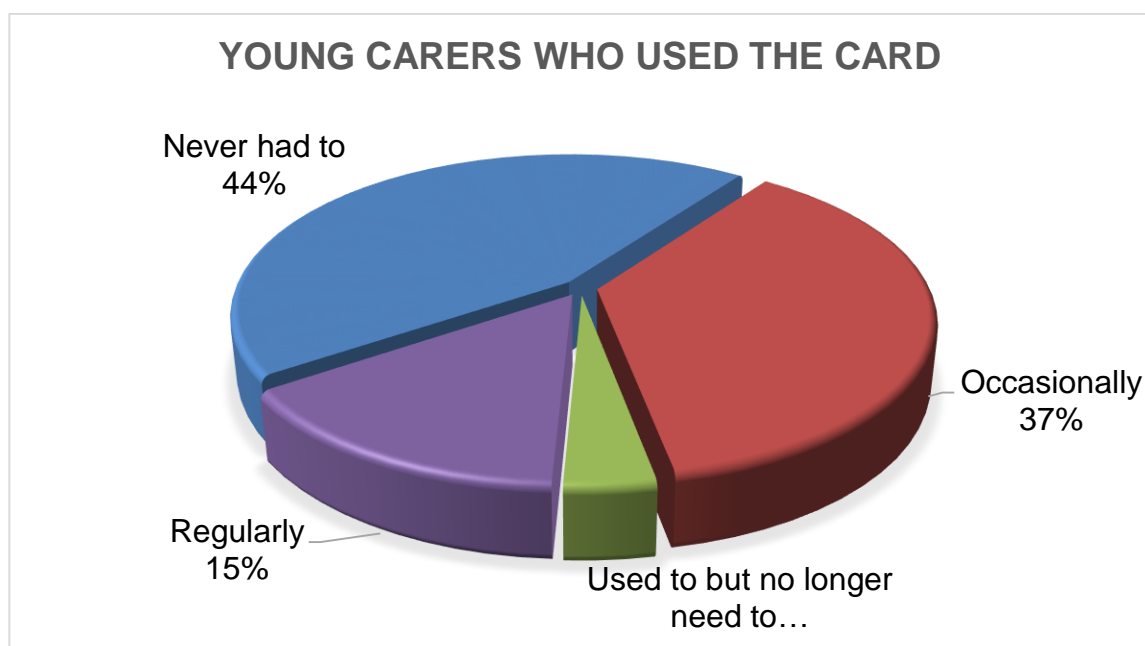
This support is ongoing and hopefully the school will be in a position to submit their evidence by summer 2019. If successful they will be the first in the whole of the Stockton-on-Tees Borough to complete the award.

Young Carers Card

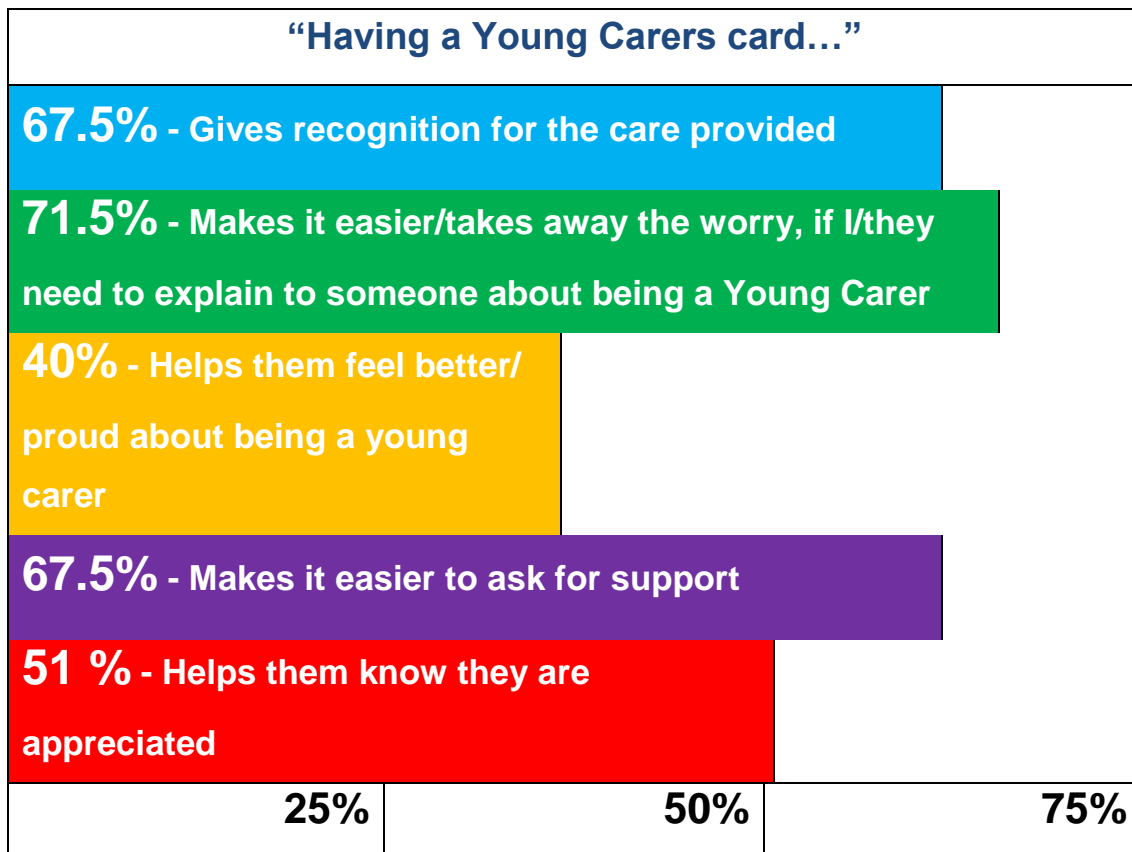
Although the young carers card has uses beyond school, it is primarily used in secondary schools by young carers to inform staff of their situation or highlight a need for support. We launched the young carers card in 2016 and by end of March, 113 young carers have been issued with a card, 46 in the last year.



In November we carried out a review of the card and its use by sending both parents and young carers a short online survey to complete. The results from both were very similar, below are some combined results.



58% of young carers who never use it say this is because the staff at school are aware of the situation and provide the help and support anyway.



Young Peoples Comments



Parents Comments

Secondary schools could do with more awareness for children that have a card. Discounts for children in the local area who have a young carers card.

Good to have as they show the child may have other things going on in their life

It's reassuring for me to know that she has it in case she needs to ask for support

It gives me as a parent confidence that if she is ever worried at school or needs to contact me or would just need extra support that her card would make it easier for her to explain her situation at home, luckily her school is very understanding but I still feel happier knowing that she has the card

Gives parents piece of mind, my child will have support at school.

I personally love the idea of the card but feel schools, teachers and pupils need to be educated a lot more about the reasons why some pupils are young carers, what situations they can/could find young carers involved in and what support they could give/show a young carer to help in making their lives a little bit easier to cope with every now and then.

Gives parents piece of mind, my child will have support at school.

Thanks to those who took the time to complete the survey we have been able to conclude the young carers card is a worthwhile tool to support young carers. We will continue to raise awareness with those who work with young people, the impact & issues which affect young carers & how to support them.

Building Blocks – Enhanced Support for Young Carers

Building Blocks is a partnership project with ABC Counselling, Play Therapy & Family Solutions (in conjunction with Time 4 You Psychological Service) to improve young carers' emotional health and wellbeing, build resilience and prevent mental health problems from emerging. The project was originally developed due to requests from young carers themselves and their parents/guardians during evaluation and feedback. Additionally, to combat the many barriers that we experienced in locating counselling services e.g. lack of/limited provision in school, lengthy waiting lists and parents/carers unable to facilitate access for a number of reasons.

The project provides a dedicated counselling and play therapy service for young carers aged 5 to 18 who are negatively impacted by their caring role. The model enables young carers to have significantly improved access to therapy at a much earlier stage and features a combined approach which includes face to face counselling sessions and the innovative use of digital technology for online counselling. Face to face sessions take place at ABC Family Centre after school and during school holidays with access to a dedicated transport service where required. The online counselling enables young carers to access a service at a convenient time and/or location for them e.g. in the comfort of their own home or a location of their choice, at the right time, when they need it most.

Within the year, 20 young carers were identified, referred and accessed counselling. We have continued to learn that young carers present with additional complex issues in addition to their caring role, signifying the hidden/long term emotional wellbeing needs that young carers have. As such, young carers require longer term counselling interventions. However, we have seen some excellent positive outcomes.

The counselling has boosted his confidence, what a wonderful service and positive experience

She is much happier and content in herself & has a newfound confidence, she glows when she walks in the room

AC has completed her counselling and it has massively raised her confidence, she now goes out to play & has lots of friends

She is feeling much more confident and content & is happier to spend time with her Dad who has young onset dementia

Acknowledgements & Thanks

The work of **EASTERN RAVENS TRUST** would not have been possible this year without the unrelenting commitment and enthusiasm of a remarkable team. Our thanks go to:

Board of Directors

Jim Beall – Chair
Kenny McGarvey – Vice Chair
Lesley Cooke
Evaline Cunningham
Sue Moppett
Pam Norman

Staff

Jan Brown
Lisa Coleman
John Greenan
Tracey Hamilton
Barbara Hampson
Emma Hayes
Pascalle Hatfield
Simon Honeywell
Phillippa Oliphant
Sue McGee
Hannah Newsome
Gordon Wills
Ann-Marie Wilson
Star Wilson

Thanks also go to our **funders, partners** and **stakeholders** and all who contributed to this report.

If you would like to know more about Eastern Ravens Trust
& our work, please give us a call:

01642 678454.

or

send us an email:

info@easternravenstrust.org

EASTERN RAVENS TRUST
(A company limited by guarantee not having a share capital)

REPORT AND FINANCIAL STATEMENTS

YEAR ENDED 31ST MARCH 2019

COMPANY NUMBER : 02206156

REGISTERED CHARITY : 519907

EASTERN RAVENS TRUST

Contents

Page

Report of the Council of Management

2

Report of the Independent Examiner

7

Statement of financial activities

8

Balance Sheet

9

Notes forming part of the financial statements

10

EASTERN RAVENS TRUST

REPORT OF THE BOARD OF DIRECTORS (DIRECTORS AND TRUSTEES)

YEAR ENDED 31ST MARCH 2019

The Trustees present their report and the audited financial statements of the charity for the year ended 31st March 2019. The trustees have adopted the provisions of the Statement of Recommended Practice (SORP) "Accounting and Reporting by Charities" (FRS 102) in preparing the annual report and financial statements of the charity.

The financial statements have been prepared in accordance with the accounting policies set out in the notes to the accounts and comply with the charity's governing document, the Charities Act 2011 and Accounting and Reporting by Charities: Statement of Recommended Practice applicable to charities preparing their accounts in accordance with the Financial Reporting Standard applicable in the UK and Republic of Ireland published on 16 July 2014 (as amended by Update Bulletin 1 published on 2 February 2016).

REFERENCE AND ADMINISTRATIVE INFORMATION

Charity name: Eastern Ravens Trust

Charity registration number: 519907

Company registration number: 02206156

Registered office and
operational address: Community Zone
North Shore Academy
Talbot Street
Stockton on Tees
TS20 2AY

Board of Directors:

Jim Beall	Chair
Kenny McGarvey	Vice-chair
Lesley Cooke	
Evaline Cunningham	
Sue Moppett	
Pamela Norman (Appointed 30 th November 2018)	

Company Secretary

Tracey Hamilton

Trust Manager

Tracey Hamilton

Independent Examiner

Mr J Gresham FCCA
Baldwins, New Garth House, Upper Garth Gardens, Guisborough, TS14 6HA

EASTERN RAVENS TRUST

REPORT OF THE COUNCIL OF MANAGEMENT (DIRECTORS AND TRUSTEES)

YEAR ENDED 31ST MARCH 2019

REFERENCE AND ADMINISTRATIVE INFORMATION (continued)

BANKERS

Nat West Bank plc, Stockton on Tees Branch, 123 High Street, Stockton TS18 1NW

STRUCTURE, GOVERNANCE & MANAGEMENT

Governing Document

Eastern Ravens Trust is a company limited by guarantee and a registered charity governed by its Memorandum and Articles of Association dated 16th December 1987 as amended by special resolutions dated 13th April 1997 and 22nd April 1998.

Recruitment and appointment of the Board of Directors

The Board of Directors (who are trustees of the charity) composes of not less than 5 but not more than 12, as the members of the Trust think fit. The Board of Directors are elected by the members of the Trust at each Annual General Meeting and hold office for a period of 3 years from the Annual General Meeting at which they are elected. At each Annual General Meeting one third of the Board of Directors retires but they can offer themselves for re-election. Those retiring are those longest in office since their last retirement. The Board of Directors has to meet at least 6 times a year. Trustees are recruited from the membership of the charity.

Trustee induction and training

New trustees are briefed on their legal obligations under company and charity law. They are provided with a copy of the Memorandum and Articles of Association and the most recent audited accounts, as well up to date management information. Trustees are encouraged to attend appropriate external training events where these will facilitate their role.

Risk management

The trustees monitor progress against budget and objectives and review their strategic objectives at their regular meetings. They also review the risks faced by the charity and implement strategies to mitigate those risks. This included the computerisation of the accounting records to ensure that management reports can be produced on a timely basis.

Organisational structure

The trustees are responsible for administering the charity and for its strategic direction. A manager is appointed by the trustees to manage the day to day operations of the charity.

Related parties

The charity does not have any relate parties other than trustees and their immediate families.

EASTERN RAVENS TRUST

REPORT OF THE COUNCIL OF MANAGEMENT (DIRECTORS AND TRUSTEES)

YEAR ENDED 31ST MARCH 2019

Objectives, activities, achievement and performance including public benefit statement

The principal activity of the Company in the year under review was the informal education of young people aged 8 to 16 years who are experiencing social exclusion and/or disadvantage.

The trustees have referred to the guidance contained in the Charity Commission's general guidance on public benefit when reviewing the charity's aims and objectives and in planning its future activities.

Chairperson's Report

This is my twelfth annual report as Chair of the Trust and I am delighted to convey that we have had a further successful year in terms service delivery and funding. Like many VCSE organisations, new funding streams, particularly for core costs, are harder to secure but we remain in control of our financial viability.

Some of this year's achievements include:

- Confirmation of a 3-year contract with Stockton-on-Tees Borough Council to deliver the Young Carers Support Service effective 01.10.18.
- Additional funding to extend the dedicated young carers counselling service for another 6 months in partnership with ABC Counselling, Play Therapy & Family Solutions.
- Continuing as a delivery partner for Youth United Stockton for a further 12 months.
- Successful application to Santander's Discovery Grant programme to provide cooking workshops.
- Successful application to Middlesbrough & Teesside Philanthropic Foundation to deliver 'Young Carers Take a Break'.
- Continued delivery of the Youth Investment Fund open access youth provision in partnership with North Shore Academy.
- Providing Roseworth Big Local's children and young people's summer holiday programme in partnership with EPIC Teesside CIC and Involve Tees Valley.
- Surprise donation of £6745 from the workplace of a parent who is supported by the young carers service.
- At the end of this year, confirmed funding from The Ballinger Charitable Trust of £16k per annum for three years towards the core costs of the organisation.

None of this continued success would be possible without the hard work and commitment of many people – not least paid staff, volunteers, funders and Directors. On behalf of the children, young people and families who benefit from this, I again offer a simple but sincere 'Thank You' and urge you all to keep up the good work.

Jim Beall

EASTERN RAVENS TRUST
REPORT OF THE COUNCIL OF MANAGEMENT (DIRECTORS AND TRUSTEES)
YEAR ENDED 31ST MARCH 2019

Investment powers

Under the Memorandum and Articles of Association, the charity has the power to make any investment which the Trustees see fit.

Reserves policy

The trustees aim to expend all funds on their charitable objects, but recognise the need to maintain a certain level of reserves as a cushion against possible future funding difficulties. Free reserves (i.e. those reserves not tied up in fixed assets, designated or restricted funds) of £70,000 would allow the charity to continue its operations for around 4 months, while alternative funding sources were sought.

At 31st March 2019, free reserves amounted to £ 20,924.

EASTERN RAVENS TRUST

REPORT OF THE COUNCIL OF MANAGEMENT (DIRECTORS AND TRUSTEES)

YEAR ENDED 31ST MARCH 2019

Statement of Trustees' Responsibilities

The trustees (who are also directors of Eastern Ravens Trust for the purposes of company law) are responsible for preparing the Trustees' Annual Report and the financial statements in accordance with applicable law and United Kingdom Accounting Standards (United Kingdom Generally Accepted Accounting Practice).

Company law requires the trustees to prepare financial statements for each financial year, which give a true and fair view of the state of affairs of the charitable company and of the incoming resources and application of resources, including the income and expenditure, of the charitable company for that period. In preparing these financial statements, the trustees are required to:

- select suitable accounting policies and then apply them consistently;
- observe the methods and principles in the Charities SORP;
- make judgements and estimates that are reasonable and prudent;
- state whether applicable UK Accounting Standards have been followed, subject to any material departures disclosed and explained in the financial statements;
- prepare the financial statements on the going concern basis unless it is inappropriate to presume that the charitable company will continue in operation.

The trustees are responsible for keeping adequate accounting records that disclose with reasonable accuracy at any time the financial position of the charitable company and enable them to ensure that the financial statements comply with the Companies Act 2006. They are also responsible for safeguarding the assets of the charitable company and hence for taking reasonable steps for the prevention and detection of fraud and other irregularities.

By order of the trustees:



J Beall
Trustee

20th September 2019

Independent Examiner's Report to the Trustees of Eastern Ravens Trust

I report on the accounts of the company for the year ended 31st March 2019 which are set out on pages 8 to 19.

Respective responsibilities of trustees and examiner

The trustees (who are also the directors of the company for the purposes of company law) are responsible for the preparation of the accounts. The trustees consider that an audit is not required for this year under section 144(2) of the Charities Act 2011 (the 2011 Act) and that an independent examination is needed.

Having satisfied myself that the charity is not subject to audit under company law and is eligible for independent examination, it is my responsibility to:

- examine the accounts under section 145 of the 2011 Act;
- follow the procedures laid down in the general Directions given by the Charity Commission under section 145(5)(b) of the 2011 Act; and
- state whether particular matters have come to my attention.

Basis of independent examiner's report

My examination was carried out in accordance with the general Directions given by the Charity Commission. An examination includes a review of the accounting records kept by the charity and a comparison of the accounts presented with those records. It also includes consideration of any unusual items or disclosures in the accounts, and seeking explanations from you as trustees concerning any such matters. The procedures undertaken do not provide all the evidence that would be required in an audit and consequently no opinion is given as to whether the accounts present a "true and fair view" and the report is limited to those matters set out in the statement below.

Independent examiner's statement

In connection with my examination, no matter has come to my attention:

- 1 which gives me reasonable cause to believe that, in any material respect, the requirements:
 - to keep accounting records in accordance with section 386 of the Companies Act 2006; and
 - to prepare accounts which accord with the accounting records, comply with the accounting requirements of section 396 of the Companies Act 2006 and with the methods and principles of the Statement of Recommended Practice: Accounting and Reporting by Charitieshave not been met; or
- 2 to which, in my opinion, attention should be drawn in order to enable a proper understanding of the accounts to be reached.

Mr J Gresham FCCA
Baldwins
Chartered Accountants
20th September 2019



New Garth House
Upper Garth Gardens
GUISBOROUGH
TS14 6HA

EASTERN RAVENS TRUST

STATEMENT OF FINANCIAL ACTIVITIES (INCLUDING INCOME & EXPENDITURE ACCOUNT) FOR THE YEAR ENDED 31ST MARCH 2019

	Note	Unrestricted Funds £	Restricted Funds £	Total Funds 2019 £	Total Funds 2018 £
INCOME					
Donations & legacies	2	10297	-	10297	2776
<i>Income from charitable activities</i>					
Youth activities	2	7335	194576	201911	200554
Investment income		82	-	82	5
TOTAL INCOME		<u>17714</u>	<u>194576</u>	<u>212290</u>	<u>203335</u>
EXPENDITURE					
<i>Expenditure on charitable activities</i>					
Cost of youth activities work	3	14495	207768	225630	189415
TOTAL EXPENDITURE	3	<u>14495</u>	<u>207768</u>	<u>225630</u>	<u>189415</u>
Net income/(expenditure) for the year		3219	(13192)	(9973)	13920
Transfers between funds	7	(7849)	7849	-	-
Net movement in funds		(4630)	(5343)	(9973)	13920
Total funds brought forward		<u>62591</u>	<u>39338</u>	<u>101929</u>	<u>88009</u>
Total funds carried forward		<u>57961</u>	<u>33995</u>	<u>91956</u>	<u>101929</u>

**EASTERN RAVENS TRUST
BALANCE SHEET AS AT 31ST MARCH 2019**

	NOTE	2019		2018	
		£	£	£	£
FIXED ASSETS	7		2764		5303
CURRENT ASSETS					
Debtors	8	-		34	
Cash at bank and in hand		109158		105526	
		<u>109158</u>		<u>105560</u>	
CREDITORS: AMOUNTS FALLING DUE WITHIN ONE YEAR	9	(19966)		(8934)	
		<u></u>		<u></u>	
NET CURRENT ASSETS			89192		96626
			<u></u>		<u></u>
NET ASSETS			91956		101929
			<u></u>		<u></u>
CAPITAL AND RESERVES					
Funds					
Restricted	10		33995		39338
Designated	10		34273		34273
Unrestricted	10		23688		28318
			<u></u>		<u></u>
			91956		101929
			<u></u>		<u></u>

For the year ending 31st March 2019 the company was entitled to exemption from audit under section 477 of the Companies Act 2006 relating to small companies.

Directors' responsibilities:

- The members have not required the company to obtain an audit of its accounts for the year in question in accordance with section 476;
- The directors acknowledge their responsibilities for complying with the requirements of the Act with respect to accounting records and the preparation of accounts.

The Financial Statements have been prepared in accordance with the special provisions of Part 15 of the Companies Act 2006 relating to small companies.

Approved by the Trustees on 20th September 2019 and signed on their behalf by

J Beall..........Trustee

EASTERN RAVENS TRUST
NOTES FORMING PART OF THE FINANCIAL STATEMENTS
FOR THE YEAR ENDED 31ST MARCH 2019

1. ACCOUNTING POLICIES

(a) General information and basis of preparation

Eastern Ravens Trust is a company limited by guarantee and registered in England. In the event of the charity being wound up, the liability in respect of the guarantee is limited to £1 per member of the charity. The address of the registered office is given in the charity information on page 2 of these financial statements. The nature of the charity's operations and principal activities are the informal education of young people aged 8 to 16 years who are experiencing social exclusion and/or disadvantage.

The charity constitutes a public benefit entity as defined by FRS 102. The financial statements have been prepared in accordance with Accounting and Reporting by Charities: Statement of Recommended Practice applicable to charities preparing their accounts in accordance with the Financial Reporting Standard applicable in the UK and Republic of Ireland (FRS 102) issued on 16 July 2014 (as updated through Update Bulletin 1 published on 2 February 2016), the Financial Reporting Standard applicable in the United Kingdom and Republic of Ireland (FRS 102), the Charities Act 2011, the Companies Act 2006 and UK Generally Accepted Practice as it applies from 1 January 2015.

The charity has applied Update Bulletin 1 as published on 2 February 2016 and does not include a cash flow statement on the grounds that it is applying FRS 102 Section 1A.

The financial statements are prepared on a going concern basis under the historical cost convention, modified to include certain items at fair value. The financial statements are presented in sterling which is the functional currency of the charity and rounded to the nearest £.

The significant accounting policies applied in the preparation of these financial statements are set out below. These policies have been consistently applied to all years presented unless otherwise stated.

The charity adopted SORP (FRS 102) in the current year but this has not affected the financial position or performance.

(b) Funds

Unrestricted funds are available for use at the discretion of the trustees in furtherance of the general objectives of the charity and which have not been designated for other purposes.

Designated funds comprise unrestricted funds that have been set aside by the trustees for particular purposes. The aim and use of each designated fund is set out in the notes to the financial statements.

Restricted funds are funds which are to be used in accordance with specific restrictions imposed by donors or which have been raised by the charity for particular purposes. The cost of raising and administering such funds are charged against the specific fund. The aim and use of each restricted fund is set out in the notes to the financial statements.

EASTERN RAVENS TRUST
NOTES FORMING PART OF THE FINANCIAL STATEMENTS
FOR THE YEAR ENDED 31ST MARCH 2019

1. ACCOUNTING POLICIES

(c) Income recognition

All incoming resources are included in the Statement of Financial Activities (SoFA) when the charity is legally entitled to the income after any performance conditions have been met, the amount can be measured reliably and it is probable that the income will be received.

For donations to be recognised the charity will have been notified of the amounts and the settlement date in writing. If there are conditions attached to the donation and this requires a level of performance before entitlement can be obtained then income is deferred until those conditions are fully met or the fulfilment of those conditions is within the control of the charity and it is probable that they will be fulfilled.

Donated facilities and donated professional services are recognised in income at their fair value when their economic benefit is probable, it can be measured reliably and the charity has control over the item. Fair value is determined on the basis of the value of the gift to the charity. For example the amount the charity would be willing to pay in the open market for such facilities and services. A corresponding amount is recognised in expenditure.

No amount is included in the financial statements for volunteer time in line with the SORP (FRS 102). Further detail is given in the Trustees' Annual Report.

For legacies, entitlement is the earlier of the charity being notified of an impending distribution or the legacy being received. At this point income is recognised. On occasion legacies will be notified to the charity however it is not possible to measure the amount expected to be distributed. On these occasions, the legacy is treated as a contingent asset and disclosed.

Investment income is earned through holding cash in a deposit account and is recognised when it is earned.

(d) Expenditure recognition

All expenditure is accounted for on an accruals basis and has been classified under headings that aggregate all costs related to the category. Expenditure is recognised where there is a legal or constructive obligation to make payments to third parties, it is probable that the settlement will be required and the amount of the obligation can be measured reliably. All direct costs relate to the charity's charitable activities.

EASTERN RAVENS TRUST
NOTES FORMING PART OF THE FINANCIAL STATEMENTS
FOR THE YEAR ENDED 31ST MARCH 2019

1. ACCOUNTING POLICIES

(e) Support costs allocation

Support costs are those that assist the work of the charity but do not directly represent charitable activities and include office costs, governance costs, administrative payroll costs. They are incurred directly in support of expenditure on the objects of the charity and include project management carried out at Headquarters. Where support costs cannot be directly attributed to particular headings they have been allocated to cost of raising funds and expenditure on charitable activities on a basis consistent with use of the resources.

The analysis of these costs is included in note 3.

Irrecoverable VAT is charged as an expense against the activity for which expenditure arose.

(f) Tangible fixed assets

Tangible fixed assets are stated at cost (or deemed cost) or valuation less accumulated depreciation and accumulated impairment losses. Cost includes costs directly attributable to making the asset capable of operating as intended.

Depreciation is provided on all tangible fixed assets, at rates calculated to write off the cost, less estimated residual value, of each asset on a systematic basis over its expected useful life as follows:

Equipment	25% straight line
-----------	-------------------

(g) Debtors and creditors receivable / payable within one year

Debtors and creditors with no stated interest rate and receivable or payable within one year are recorded at transaction price. Any losses arising from impairment are recognised in expenditure.

(h) Provisions

Provisions are recognised when the charity has an obligation at the balance sheet date as a result of a past event, it is probable that an outflow of economic benefits will be required in settlement and the amount can be reliably estimated.

EASTERN RAVENS TRUST
NOTES FORMING PART OF THE FINANCIAL STATEMENTS
FOR THE YEAR ENDED 31ST MARCH 2019

1. ACCOUNTING POLICIES

(i) Employee benefits

When employees have rendered service to the charity, short-term employee benefits to which the employees are entitled are recognised at the undiscounted amount expected to be paid in exchange for that service.

The charity operates a defined contribution plan for the benefit of its employees. Contributions are expensed as they become payable.

(j) Tax

The charity is an exempt charity within the meaning of schedule 3 of the Charities Act 2011 and is considered to pass the tests set out in Paragraph 1 Schedule 6 Finance Act 2010 and therefore it meets the definition of a charitable company for UK corporation tax purposes.

(k) Going concern

The financial statements have been prepared on a going concern basis as the trustees believe that no material uncertainties exist. The trustees have considered the level of funds held and the expected level of income and expenditure for 12 months from authorising these financial statements. The budgeted income and expenditure is sufficient with the level of reserves for the charity to be able to continue as a going concern.

EASTERN RAVENS TRUST
NOTES FORMING PART OF THE FINANCIAL STATEMENTS
FOR THE YEAR ENDED 31ST MARCH 2019

2. INCOMING RESOURCES	Unrestricted Funds £	Restricted Funds £	Total 2019 £	Total 2018 £
<i>Donations & legacies</i>				
Legacy	-	-	-	-
Sundry donations	10297	-	10297	2776
	<u>10297</u>	<u>-</u>	<u>10297</u>	<u>2776</u>
	<u>10297</u>	<u>-</u>	<u>10297</u>	<u>2776</u>
	£	£	£	£
<i>Income from charitable activities</i>				
SBC carers' grant	523	105123	105646	105423
Big Local – Roseworth	-	814	814	5266
Willan Trust	-	-	-	10000
YIF Big Lottery	-	48239	48239	58169
Philanthropy NPC	-	-	-	192
CCG Health Initiatives	-	14016	14016	9344
YUS Income	-	9280	9280	4640
Fundraising	5553	-	5553	2663
Miscellaneous	1259	-	1259	4857
M'bro & Teesside Philanthropic	-	3715	3715	-
Discovery Grant	-	4800	4800	-
Teesside University	-	3600	3600	-
Public Health	-	4989	4989	-
	<u>7335</u>	<u>194576</u>	<u>201911</u>	<u>200554</u>

Of total income of £212208 in 2019 (2018: £203335), £194576 (2018: £192542) was credited to restricted funds and £17715 (2018: £10793) was credited to unrestricted funds.

EASTERN RAVENS TRUST
NOTES FORMING PART OF THE FINANCIAL STATEMENTS
FOR THE YEAR ENDED 31ST MARCH 2019

3. EXPENDITURE

	Basis of allocation	Charitable Costs	Governance costs	2019 Total	2018 Total
Costs directly allocated to activities		£	£	£	£
Staff costs	Direct	111317	-	111317	103481
Professional fees	Direct	1070	-	1070	1193
Activities	Direct	55008	-	55008	31535
Transport costs	Direct	1325	-	1325	105
Room hire	Direct	70	-	70	346
Sessional staff	Direct	8443	-	8443	4626
Insurance	Direct	1035	-	1035	1500
Staff travel	Direct	2965	-	2965	2669
Training	Direct	339	-	339	266
Advertising	Direct	925	-	925	369
Independent Exam	Direct		1500	1500	1380
Miscellaneous	Direct	533	-	533	691
Support costs allocated to activities					
Staff costs	Staff time	20287	1068	21355	28501
Depreciation	Usage	2285	254	2539	2539
Premises costs	Usage	5400	600	6000	6005
Professional	Usage	742	741	1483	751
Office costs	Usage	5720	636	6356	3458
		<u>217464</u>	<u>4799</u>	<u>222263</u>	<u>189415</u>
Total					

Of the £222263 of expenditure in 2019 (2018: £189415) £207768 was charged to restricted funds (2018: £168187) and £14495 was charged to unrestricted funds (2018: £21228).

EASTERN RAVENS TRUST
NOTES FORMING PART OF THE FINANCIAL STATEMENTS
FOR THE YEAR ENDED 31ST MARCH 2019

4. NET (OUTGOING)/INCOMING RESOURCES FOR THE YEAR

This is stated after charging:	2019	2018
	£	£
Trustees' emoluments and expenses	Nil	Nil
Independent Examiner's Fee (including VAT)	1500	1380
Depreciation of tangible fixed assets	2539	2539
	<u> </u>	<u> </u>

5. STAFF COSTS & NUMBERS

	2019	2018
	£	£
Wages and Salaries	121491	122089
Social Security Costs	8037	7829
Pension costs	2754	1392
Recruitment costs	390	672
	<u> </u>	<u> </u>
	<u>132672</u>	<u>131982</u>

There were no employees whose emoluments as defined for taxation purposes amounted to over £60,000 (2018: NIL). The average number of employees during the year was 6 (2018: 6) being the manager and support staff. In addition sessional workers are employed.

6. TRANSFERS BETWEEN FUNDS

These relate to transfers which account for management and other charges from unrestricted to restricted funds.

EASTERN RAVENS TRUST
NOTES FORMING PART OF THE FINANCIAL STATEMENTS
FOR THE YEAR ENDED 31ST MARCH 2019

7. FIXED ASSETS

	Equipment £
COST	
At 1 st April 2018	10158
Additions	-
	<hr/>
At 31 st March 2019	10158
	<hr/> <hr/>
DEPRECIATION	
At 1 st April 2018	4855
Charge for the year	2539
	<hr/>
At 31 st March 2019	7394
	<hr/> <hr/>
NET BOOK VALUE	
At 31 st March 2019	2764
	<hr/> <hr/>
At 31 st March 2018	5303
	<hr/> <hr/>

There were no commitments to capital expenditure at 31st March 2019 or at 31st March 2018.

8. DEBTORS

	2019 £	2018 £
Other debtors and prepayments	-	34
	<hr/> <hr/>	<hr/> <hr/>

EASTERN RAVENS TRUST
NOTES FORMING PART OF THE FINANCIAL STATEMENTS
FOR THE YEAR ENDED 31ST MARCH 2019

9. CREDITORS: Amounts falling due within one year

	2019 £	2018 £
Trade creditors	1850	-
Accruals	1880	2895
Deferred Income	16000	6039
Pension	236	
	<u>19966</u>	<u>8934</u>

10. MOVEMENT IN FUNDS

	At 1 st April 2018 £	Incoming Resources £	Outgoing Resources £	Transfers £	At 31 st March 2019 £
Restricted Funds					
Young Carers	-	105123	(105123)	-	-
Tristar Homes Buzzin	12387	-	-	-	12387
Roseworth Big Local	-	814	(814)	-	-
YIF Big Lottery	22380	48239	(56022)	-	14597
YUS	-	9280	(9280)	-	-
CCG Health Initiatives	371	14016	(19058)	4671	-
Willan Trust	4200	-	(4867)	667	-
Mbro & Tees Philanthropic	-	3715	(6226)	2511	-
Discovery Grant	-	4800	(4800)	-	-
Teesside University	-	3600	-	-	3600
Public Health	-	4989	(1578)	-	3411
Total Restricted	39338	194576	(207768)	7849	33995
Unrestricted Funds					
General	28318	17714	(14495)	(7849)	23688
Designated					
Kathy Lindsey Memorial Fund	3181	-	-	-	3181
Lucy Evers Memorial Fund	10253	-	-	-	10253
Redundancy Standby Fund	20000	-	-	-	20000
Terry Wood Memorial Fund	839	-	-	-	839
Total Unrestricted	62591	17714	(14495)	(7849)	57641
Total Funds	101929	212290	(222263)	-	91956

EASTERN RAVENS TRUST
NOTES FORMING PART OF THE FINANCIAL STATEMENTS
FOR THE YEAR ENDED 31ST MARCH 2019

10. MOVEMENT IN FUNDS continued

PURPOSES OF RESTRICTED FUNDS

Young Carers	Bespoke & tailored support to young carers and their families within the Borough of Stockton-on-Tees.
Tristar Homes Buzzin'	This funding is to deliver a project that gives young people in need, accredited outcomes and life skills.
Roseworth Big Local	These grants from Big Local are to provide for positive activities for young people in the Roseworth Ward of Stockton.
Youth Investment Fund	Deliver, expand and create high quality youth services to improve outcomes for young people.
Youth United Stockton	Delivery of one open access youth session per week for 50 weeks.
CCG Health Initiatives	Dedicated face to face and online counselling service for young carers.
Willan Trust	Working with young people in disadvantaged communities to combat crime/anti-social behaviour.

PURPOSES OF DESIGNATED FUNDS

Kathy Lindsey Memorial Fund, may be used at the discretion of the trustees to make grants to families in need.

Lucy Evers Memorial Fund is to be used to provide one-off grants to support children and young people in achieving their aspirations where little or no assistance is available elsewhere.

Redundancy Standby Fund is a contingency against any future redundancy costs.

11. ANALYSIS OF NET ASSETS BETWEEN FUNDS

	Unrestricted Funds	Restricted Funds	Total
	£	£	£
Fixed Assets	2764	-	2764
Net Current Assets	55197	33995	89192
	<u>57961</u>	<u>33995</u>	<u>91956</u>

EASTERN RAVENS TRUST
(A company limited by guarantee not having a share capital)

REPORT AND FINANCIAL STATEMENTS

YEAR ENDED 31ST MARCH 2019

COMPANY NUMBER : 02206156

REGISTERED CHARITY : 519907

EASTERN RAVENS TRUST

Contents

	Page
Report of the Council of Management	2
Report of the Independent Examiner	7
Statement of financial activities	8
Balance Sheet	9
Notes forming part of the financial statements	10

EASTERN RAVENS TRUST

REPORT OF THE BOARD OF DIRECTORS (DIRECTORS AND TRUSTEES)

YEAR ENDED 31ST MARCH 2019

The Trustees present their report and the audited financial statements of the charity for the year ended 31st March 2019. The trustees have adopted the provisions of the Statement of Recommended Practice (SORP) "Accounting and Reporting by Charities" (FRS 102) in preparing the annual report and financial statements of the charity.

The financial statements have been prepared in accordance with the accounting policies set out in the notes to the accounts and comply with the charity's governing document, the Charities Act 2011 and Accounting and Reporting by Charities: Statement of Recommended Practice applicable to charities preparing their accounts in accordance with the Financial Reporting Standard applicable in the UK and Republic of Ireland published on 16 July 2014 (as amended by Update Bulletin 1 published on 2 February 2016).

REFERENCE AND ADMINISTRATIVE INFORMATION

Charity name: Eastern Ravens Trust

Charity registration number: 519907

Company registration number: 02206156

Registered office and
operational address: Community Zone
North Shore Academy
Talbot Street
Stockton on Tees
TS20 2AY

Board of Directors:

Jim Beall	Chair
Kenny McGarvey	Vice-chair
Lesley Cooke	
Evaline Cunningham	
Sue Moppett	
Pamela Norman (Appointed 30 th November 2018)	

Company Secretary

Tracey Hamilton

Trust Manager

Tracey Hamilton

Independent Examiner

Mr J Gresham FCCA
Baldwins, New Garth House, Upper Garth Gardens, Guisborough, TS14 6HA

EASTERN RAVENS TRUST

REPORT OF THE COUNCIL OF MANAGEMENT (DIRECTORS AND TRUSTEES)

YEAR ENDED 31ST MARCH 2019

REFERENCE AND ADMINISTRATIVE INFORMATION (continued)

BANKERS

Nat West Bank plc, Stockton on Tees Branch, 123 High Street, Stockton TS18 1NW

STRUCTURE, GOVERNANCE & MANAGEMENT

Governing Document

Eastern Ravens Trust is a company limited by guarantee and a registered charity governed by its Memorandum and Articles of Association dated 16th December 1987 as amended by special resolutions dated 13th April 1997 and 22nd April 1998.

Recruitment and appointment of the Board of Directors

The Board of Directors (who are trustees of the charity) composes of not less than 5 but not more than 12, as the members of the Trust think fit. The Board of Directors are elected by the members of the Trust at each Annual General Meeting and hold office for a period of 3 years from the Annual General Meeting at which they are elected. At each Annual General Meeting one third of the Board of Directors retires but they can offer themselves for re-election. Those retiring are those longest in office since their last retirement. The Board of Directors has to meet at least 6 times a year. Trustees are recruited from the membership of the charity.

Trustee induction and training

New trustees are briefed on their legal obligations under company and charity law. They are provided with a copy of the Memorandum and Articles of Association and the most recent audited accounts, as well up to date management information. Trustees are encouraged to attend appropriate external training events where these will facilitate their role.

Risk management

The trustees monitor progress against budget and objectives and review their strategic objectives at their regular meetings. They also review the risks faced by the charity and implement strategies to mitigate those risks. This included the computerisation of the accounting records to ensure that management reports can be produced on a timely basis.

Organisational structure

The trustees are responsible for administering the charity and for its strategic direction. A manager is appointed by the trustees to manage the day to day operations of the charity.

Related parties

The charity does not have any relate parties other than trustees and their immediate families.

EASTERN RAVENS TRUST

REPORT OF THE COUNCIL OF MANAGEMENT (DIRECTORS AND TRUSTEES)

YEAR ENDED 31ST MARCH 2019

Objectives, activities, achievement and performance including public benefit statement

The principal activity of the Company in the year under review was the informal education of young people aged 8 to 16 years who are experiencing social exclusion and/or disadvantage.

The trustees have referred to the guidance contained in the Charity Commission's general guidance on public benefit when reviewing the charity's aims and objectives and in planning its future activities.

Chairperson's Report

This is my twelfth annual report as Chair of the Trust and I am delighted to convey that we have had a further successful year in terms service delivery and funding. Like many VCSE organisations, new funding streams, particularly for core costs, are harder to secure but we remain in control of our financial viability.

Some of this year's achievements include:

- Confirmation of a 3-year contract with Stockton-on-Tees Borough Council to deliver the Young Carers Support Service effective 01.10.18.
- Additional funding to extend the dedicated young carers counselling service for another 6 months in partnership with ABC Counselling, Play Therapy & Family Solutions.
- Continuing as a delivery partner for Youth United Stockton for a further 12 months.
- Successful application to Santander's Discovery Grant programme to provide cooking workshops.
- Successful application to Middlesbrough & Teesside Philanthropic Foundation to deliver 'Young Carers Take a Break'.
- Continued delivery of the Youth Investment Fund open access youth provision in partnership with North Shore Academy.
- Providing Roseworth Big Local's children and young people's summer holiday programme in partnership with EPIC Teesside CIC and Involve Tees Valley.
- Surprise donation of £6745 from the workplace of a parent who is supported by the young carers service.
- At the end of this year, confirmed funding from The Ballinger Charitable Trust of £16k per annum for three years towards the core costs of the organisation.

None of this continued success would be possible without the hard work and commitment of many people – not least paid staff, volunteers, funders and Directors. On behalf of the children, young people and families who benefit from this, I again offer a simple but sincere 'Thank You' and urge you all to keep up the good work.

Jim Beall

EASTERN RAVENS TRUST
REPORT OF THE COUNCIL OF MANAGEMENT (DIRECTORS AND TRUSTEES)
YEAR ENDED 31ST MARCH 2019

Investment powers

Under the Memorandum and Articles of Association, the charity has the power to make any investment which the Trustees see fit.

Reserves policy

The trustees aim to expend all funds on their charitable objects, but recognise the need to maintain a certain level of reserves as a cushion against possible future funding difficulties. Free reserves (i.e. those reserves not tied up in fixed assets, designated or restricted funds) of £70,000 would allow the charity to continue its operations for around 4 months, while alternative funding sources were sought.

At 31st March 2019, free reserves amounted to £ 20,924.

EASTERN RAVENS TRUST

REPORT OF THE COUNCIL OF MANAGEMENT (DIRECTORS AND TRUSTEES)

YEAR ENDED 31ST MARCH 2019

Statement of Trustees' Responsibilities

The trustees (who are also directors of Eastern Ravens Trust for the purposes of company law) are responsible for preparing the Trustees' Annual Report and the financial statements in accordance with applicable law and United Kingdom Accounting Standards (United Kingdom Generally Accepted Accounting Practice).

Company law requires the trustees to prepare financial statements for each financial year, which give a true and fair view of the state of affairs of the charitable company and of the incoming resources and application of resources, including the income and expenditure, of the charitable company for that period. In preparing these financial statements, the trustees are required to:

- select suitable accounting policies and then apply them consistently;
- observe the methods and principles in the Charities SORP;
- make judgements and estimates that are reasonable and prudent;
- state whether applicable UK Accounting Standards have been followed, subject to any material departures disclosed and explained in the financial statements;
- prepare the financial statements on the going concern basis unless it is inappropriate to presume that the charitable company will continue in operation.

The trustees are responsible for keeping adequate accounting records that disclose with reasonable accuracy at any time the financial position of the charitable company and enable them to ensure that the financial statements comply with the Companies Act 2006. They are also responsible for safeguarding the assets of the charitable company and hence for taking reasonable steps for the prevention and detection of fraud and other irregularities.

By order of the trustees:



J Beall
Trustee

20th September 2019

Independent Examiner's Report to the Trustees of Eastern Ravens Trust

I report on the accounts of the company for the year ended 31st March 2019 which are set out on pages 8 to 19.

Respective responsibilities of trustees and examiner

The trustees (who are also the directors of the company for the purposes of company law) are responsible for the preparation of the accounts. The trustees consider that an audit is not required for this year under section 144(2) of the Charities Act 2011 (the 2011 Act) and that an independent examination is needed.

Having satisfied myself that the charity is not subject to audit under company law and is eligible for independent examination, it is my responsibility to:

- examine the accounts under section 145 of the 2011 Act;
- follow the procedures laid down in the general Directions given by the Charity Commission under section 145(5)(b) of the 2011 Act; and
- state whether particular matters have come to my attention.

Basis of independent examiner's report

My examination was carried out in accordance with the general Directions given by the Charity Commission. An examination includes a review of the accounting records kept by the charity and a comparison of the accounts presented with those records. It also includes consideration of any unusual items or disclosures in the accounts, and seeking explanations from you as trustees concerning any such matters. The procedures undertaken do not provide all the evidence that would be required in an audit and consequently no opinion is given as to whether the accounts present a "true and fair view" and the report is limited to those matters set out in the statement below.

Independent examiner's statement

In connection with my examination, no matter has come to my attention:

- 1 which gives me reasonable cause to believe that, in any material respect, the requirements:
 - to keep accounting records in accordance with section 386 of the Companies Act 2006; and
 - to prepare accounts which accord with the accounting records, comply with the accounting requirements of section 396 of the Companies Act 2006 and with the methods and principles of the Statement of Recommended Practice: Accounting and Reporting by Charitieshave not been met; or
- 2 to which, in my opinion, attention should be drawn in order to enable a proper understanding of the accounts to be reached.

Mr J Gresham FCCA
Baldwins
Chartered Accountants
20th September 2019



New Garth House
Upper Garth Gardens
GUISBOROUGH
TS14 6HA

EASTERN RAVENS TRUST

STATEMENT OF FINANCIAL ACTIVITIES (INCLUDING INCOME & EXPENDITURE ACCOUNT) FOR THE YEAR ENDED 31ST MARCH 2019

	Note	Unrestricted Funds £	Restricted Funds £	Total Funds 2019 £	Total Funds 2018 £
INCOME					
Donations & legacies	2	10297	-	10297	2776
<i>Income from charitable activities</i>					
Youth activities	2	7335	194576	201911	200554
Investment income		82	-	82	5
TOTAL INCOME		<u>17714</u>	<u>194576</u>	<u>212290</u>	<u>203335</u>
EXPENDITURE					
<i>Expenditure on charitable activities</i>					
Cost of youth activities work	3	14495	207768	225630	189415
TOTAL EXPENDITURE	3	<u>14495</u>	<u>207768</u>	<u>225630</u>	<u>189415</u>
Net income/(expenditure) for the year		3219	(13192)	(9973)	13920
Transfers between funds	7	(7849)	7849	-	-
Net movement in funds		(4630)	(5343)	(9973)	13920
Total funds brought forward		<u>62591</u>	<u>39338</u>	<u>101929</u>	<u>88009</u>
Total funds carried forward		<u>57961</u>	<u>33995</u>	<u>91956</u>	<u>101929</u>

**EASTERN RAVENS TRUST
BALANCE SHEET AS AT 31ST MARCH 2019**

	NOTE	2019		2018	
		£	£	£	£
FIXED ASSETS	7		2764		5303
CURRENT ASSETS					
Debtors	8	-		34	
Cash at bank and in hand		109158		105526	
		<u>109158</u>		<u>105560</u>	
CREDITORS: AMOUNTS FALLING DUE WITHIN ONE YEAR	9	(19966)		(8934)	
		<u></u>		<u></u>	
NET CURRENT ASSETS			89192		96626
			<u></u>		<u></u>
NET ASSETS			91956		101929
			<u></u>		<u></u>
CAPITAL AND RESERVES					
Funds					
Restricted	10		33995		39338
Designated	10		34273		34273
Unrestricted	10		23688		28318
			<u></u>		<u></u>
			91956		101929
			<u></u>		<u></u>

For the year ending 31st March 2019 the company was entitled to exemption from audit under section 477 of the Companies Act 2006 relating to small companies.

Directors' responsibilities:

- The members have not required the company to obtain an audit of its accounts for the year in question in accordance with section 476;
- The directors acknowledge their responsibilities for complying with the requirements of the Act with respect to accounting records and the preparation of accounts.

The Financial Statements have been prepared in accordance with the special provisions of Part 15 of the Companies Act 2006 relating to small companies.

Approved by the Trustees on 20th September 2019 and signed on their behalf by

J Beall..........Trustee

EASTERN RAVENS TRUST
NOTES FORMING PART OF THE FINANCIAL STATEMENTS
FOR THE YEAR ENDED 31ST MARCH 2019

1. ACCOUNTING POLICIES

(a) General information and basis of preparation

Eastern Ravens Trust is a company limited by guarantee and registered in England. In the event of the charity being wound up, the liability in respect of the guarantee is limited to £1 per member of the charity. The address of the registered office is given in the charity information on page 2 of these financial statements. The nature of the charity's operations and principal activities are the informal education of young people aged 8 to 16 years who are experiencing social exclusion and/or disadvantage.

The charity constitutes a public benefit entity as defined by FRS 102. The financial statements have been prepared in accordance with Accounting and Reporting by Charities: Statement of Recommended Practice applicable to charities preparing their accounts in accordance with the Financial Reporting Standard applicable in the UK and Republic of Ireland (FRS 102) issued on 16 July 2014 (as updated through Update Bulletin 1 published on 2 February 2016), the Financial Reporting Standard applicable in the United Kingdom and Republic of Ireland (FRS 102), the Charities Act 2011, the Companies Act 2006 and UK Generally Accepted Practice as it applies from 1 January 2015.

The charity has applied Update Bulletin 1 as published on 2 February 2016 and does not include a cash flow statement on the grounds that it is applying FRS 102 Section 1A.

The financial statements are prepared on a going concern basis under the historical cost convention, modified to include certain items at fair value. The financial statements are presented in sterling which is the functional currency of the charity and rounded to the nearest £.

The significant accounting policies applied in the preparation of these financial statements are set out below. These policies have been consistently applied to all years presented unless otherwise stated.

The charity adopted SORP (FRS 102) in the current year but this has not affected the financial position or performance.

(b) Funds

Unrestricted funds are available for use at the discretion of the trustees in furtherance of the general objectives of the charity and which have not been designated for other purposes.

Designated funds comprise unrestricted funds that have been set aside by the trustees for particular purposes. The aim and use of each designated fund is set out in the notes to the financial statements.

Restricted funds are funds which are to be used in accordance with specific restrictions imposed by donors or which have been raised by the charity for particular purposes. The cost of raising and administering such funds are charged against the specific fund. The aim and use of each restricted fund is set out in the notes to the financial statements.

EASTERN RAVENS TRUST
NOTES FORMING PART OF THE FINANCIAL STATEMENTS
FOR THE YEAR ENDED 31ST MARCH 2019

1. ACCOUNTING POLICIES

(c) Income recognition

All incoming resources are included in the Statement of Financial Activities (SoFA) when the charity is legally entitled to the income after any performance conditions have been met, the amount can be measured reliably and it is probable that the income will be received.

For donations to be recognised the charity will have been notified of the amounts and the settlement date in writing. If there are conditions attached to the donation and this requires a level of performance before entitlement can be obtained then income is deferred until those conditions are fully met or the fulfilment of those conditions is within the control of the charity and it is probable that they will be fulfilled.

Donated facilities and donated professional services are recognised in income at their fair value when their economic benefit is probable, it can be measured reliably and the charity has control over the item. Fair value is determined on the basis of the value of the gift to the charity. For example the amount the charity would be willing to pay in the open market for such facilities and services. A corresponding amount is recognised in expenditure.

No amount is included in the financial statements for volunteer time in line with the SORP (FRS 102). Further detail is given in the Trustees' Annual Report.

For legacies, entitlement is the earlier of the charity being notified of an impending distribution or the legacy being received. At this point income is recognised. On occasion legacies will be notified to the charity however it is not possible to measure the amount expected to be distributed. On these occasions, the legacy is treated as a contingent asset and disclosed.

Investment income is earned through holding cash in a deposit account and is recognised when it is earned.

(d) Expenditure recognition

All expenditure is accounted for on an accruals basis and has been classified under headings that aggregate all costs related to the category. Expenditure is recognised where there is a legal or constructive obligation to make payments to third parties, it is probable that the settlement will be required and the amount of the obligation can be measured reliably. All direct costs relate to the charity's charitable activities.

EASTERN RAVENS TRUST
NOTES FORMING PART OF THE FINANCIAL STATEMENTS
FOR THE YEAR ENDED 31ST MARCH 2019

1. ACCOUNTING POLICIES

(e) Support costs allocation

Support costs are those that assist the work of the charity but do not directly represent charitable activities and include office costs, governance costs, administrative payroll costs. They are incurred directly in support of expenditure on the objects of the charity and include project management carried out at Headquarters. Where support costs cannot be directly attributed to particular headings they have been allocated to cost of raising funds and expenditure on charitable activities on a basis consistent with use of the resources.

The analysis of these costs is included in note 3.

Irrecoverable VAT is charged as an expense against the activity for which expenditure arose.

(f) Tangible fixed assets

Tangible fixed assets are stated at cost (or deemed cost) or valuation less accumulated depreciation and accumulated impairment losses. Cost includes costs directly attributable to making the asset capable of operating as intended.

Depreciation is provided on all tangible fixed assets, at rates calculated to write off the cost, less estimated residual value, of each asset on a systematic basis over its expected useful life as follows:

Equipment	25% straight line
-----------	-------------------

(g) Debtors and creditors receivable / payable within one year

Debtors and creditors with no stated interest rate and receivable or payable within one year are recorded at transaction price. Any losses arising from impairment are recognised in expenditure.

(h) Provisions

Provisions are recognised when the charity has an obligation at the balance sheet date as a result of a past event, it is probable that an outflow of economic benefits will be required in settlement and the amount can be reliably estimated.

EASTERN RAVENS TRUST
NOTES FORMING PART OF THE FINANCIAL STATEMENTS
FOR THE YEAR ENDED 31ST MARCH 2019

1. ACCOUNTING POLICIES

(i) Employee benefits

When employees have rendered service to the charity, short-term employee benefits to which the employees are entitled are recognised at the undiscounted amount expected to be paid in exchange for that service.

The charity operates a defined contribution plan for the benefit of its employees. Contributions are expensed as they become payable.

(j) Tax

The charity is an exempt charity within the meaning of schedule 3 of the Charities Act 2011 and is considered to pass the tests set out in Paragraph 1 Schedule 6 Finance Act 2010 and therefore it meets the definition of a charitable company for UK corporation tax purposes.

(k) Going concern

The financial statements have been prepared on a going concern basis as the trustees believe that no material uncertainties exist. The trustees have considered the level of funds held and the expected level of income and expenditure for 12 months from authorising these financial statements. The budgeted income and expenditure is sufficient with the level of reserves for the charity to be able to continue as a going concern.

EASTERN RAVENS TRUST
NOTES FORMING PART OF THE FINANCIAL STATEMENTS
FOR THE YEAR ENDED 31ST MARCH 2019

2. INCOMING RESOURCES	Unrestricted Funds £	Restricted Funds £	Total 2019 £	Total 2018 £
<i>Donations & legacies</i>				
Legacy	-	-	-	-
Sundry donations	10297	-	10297	2776
	<u>10297</u>	<u>-</u>	<u>10297</u>	<u>2776</u>
	<u>10297</u>	<u>-</u>	<u>10297</u>	<u>2776</u>
	£	£	£	£
<i>Income from charitable activities</i>				
SBC carers' grant	523	105123	105646	105423
Big Local – Roseworth	-	814	814	5266
Willan Trust	-	-	-	10000
YIF Big Lottery	-	48239	48239	58169
Philanthropy NPC	-	-	-	192
CCG Health Initiatives	-	14016	14016	9344
YUS Income	-	9280	9280	4640
Fundraising	5553	-	5553	2663
Miscellaneous	1259	-	1259	4857
M'bro & Teesside Philanthropic	-	3715	3715	-
Discovery Grant	-	4800	4800	-
Teesside University	-	3600	3600	-
Public Health	-	4989	4989	-
	<u>7335</u>	<u>194576</u>	<u>201911</u>	<u>200554</u>

Of total income of £212208 in 2019 (2018: £203335), £194576 (2018: £192542) was credited to restricted funds and £17715 (2018: £10793) was credited to unrestricted funds.

EASTERN RAVENS TRUST
NOTES FORMING PART OF THE FINANCIAL STATEMENTS
FOR THE YEAR ENDED 31ST MARCH 2019

3. EXPENDITURE

	Basis of allocation	Charitable Costs	Governance costs	2019 Total	2018 Total
Costs directly allocated to activities		£	£	£	£
Staff costs	Direct	111317	-	111317	103481
Professional fees	Direct	1070	-	1070	1193
Activities	Direct	55008	-	55008	31535
Transport costs	Direct	1325	-	1325	105
Room hire	Direct	70	-	70	346
Sessional staff	Direct	8443	-	8443	4626
Insurance	Direct	1035	-	1035	1500
Staff travel	Direct	2965	-	2965	2669
Training	Direct	339	-	339	266
Advertising	Direct	925	-	925	369
Independent Exam	Direct		1500	1500	1380
Miscellaneous	Direct	533	-	533	691
Support costs allocated to activities					
Staff costs	Staff time	20287	1068	21355	28501
Depreciation	Usage	2285	254	2539	2539
Premises costs	Usage	5400	600	6000	6005
Professional	Usage	742	741	1483	751
Office costs	Usage	5720	636	6356	3458
		<u>217464</u>	<u>4799</u>	<u>222263</u>	<u>189415</u>
Total		<u><u>217464</u></u>	<u><u>4799</u></u>	<u><u>222263</u></u>	<u><u>189415</u></u>

Of the £222263 of expenditure in 2019 (2018: £189415) £207768 was charged to restricted funds (2018: £168187) and £14495 was charged to unrestricted funds (2018: £21228).

EASTERN RAVENS TRUST
NOTES FORMING PART OF THE FINANCIAL STATEMENTS
FOR THE YEAR ENDED 31ST MARCH 2019

4. NET (OUTGOING)/INCOMING RESOURCES FOR THE YEAR

This is stated after charging:	2019	2018
	£	£
Trustees' emoluments and expenses	Nil	Nil
Independent Examiner's Fee (including VAT)	1500	1380
Depreciation of tangible fixed assets	2539	2539
	<u> </u>	<u> </u>

5. STAFF COSTS & NUMBERS

	2019	2018
	£	£
Wages and Salaries	121491	122089
Social Security Costs	8037	7829
Pension costs	2754	1392
Recruitment costs	390	672
	<u> </u>	<u> </u>
	132672	131982
	<u> </u>	<u> </u>

There were no employees whose emoluments as defined for taxation purposes amounted to over £60,000 (2018: NIL). The average number of employees during the year was 6 (2018: 6) being the manager and support staff. In addition sessional workers are employed.

6. TRANSFERS BETWEEN FUNDS

These relate to transfers which account for management and other charges from unrestricted to restricted funds.

EASTERN RAVENS TRUST
NOTES FORMING PART OF THE FINANCIAL STATEMENTS
FOR THE YEAR ENDED 31ST MARCH 2019

7. FIXED ASSETS

	Equipment £
COST	
At 1 st April 2018	10158
Additions	-
	<hr/>
At 31 st March 2019	10158
	<hr/> <hr/>
DEPRECIATION	
At 1 st April 2018	4855
Charge for the year	2539
	<hr/>
At 31 st March 2019	7394
	<hr/> <hr/>
NET BOOK VALUE	
At 31 st March 2019	2764
	<hr/> <hr/>
At 31 st March 2018	5303
	<hr/> <hr/>

There were no commitments to capital expenditure at 31st March 2019 or at 31st March 2018.

8. DEBTORS

	2019 £	2018 £
Other debtors and prepayments	-	34
	<hr/> <hr/>	<hr/> <hr/>

EASTERN RAVENS TRUST
NOTES FORMING PART OF THE FINANCIAL STATEMENTS
FOR THE YEAR ENDED 31ST MARCH 2019

9. CREDITORS: Amounts falling due within one year

	2019 £	2018 £
Trade creditors	1850	-
Accruals	1880	2895
Deferred Income	16000	6039
Pension	236	
	<u>19966</u>	<u>8934</u>

10. MOVEMENT IN FUNDS

	At 1 st April 2018 £	Incoming Resources £	Outgoing Resources £	Transfers £	At 31 st March 2019 £
Restricted Funds					
Young Carers	-	105123	(105123)	-	-
Tristar Homes Buzzin	12387	-	-	-	12387
Roseworth Big Local	-	814	(814)	-	-
YIF Big Lottery	22380	48239	(56022)	-	14597
YUS	-	9280	(9280)	-	-
CCG Health Initiatives	371	14016	(19058)	4671	-
Willan Trust	4200	-	(4867)	667	-
Mbro & Tees Philanthropic	-	3715	(6226)	2511	-
Discovery Grant	-	4800	(4800)	-	-
Teesside University	-	3600	-	-	3600
Public Health	-	4989	(1578)	-	3411
Total Restricted	39338	194576	(207768)	7849	33995
Unrestricted Funds					
General	28318	17714	(14495)	(7849)	23688
Designated					
Kathy Lindsey Memorial Fund	3181	-	-	-	3181
Lucy Evers Memorial Fund	10253	-	-	-	10253
Redundancy Standby Fund	20000	-	-	-	20000
Terry Wood Memorial Fund	839	-	-	-	839
Total Unrestricted	62591	17714	(14495)	(7849)	57641
Total Funds	101929	212290	(222263)	-	91956

EASTERN RAVENS TRUST
NOTES FORMING PART OF THE FINANCIAL STATEMENTS
FOR THE YEAR ENDED 31ST MARCH 2019

10. MOVEMENT IN FUNDS continued

PURPOSES OF RESTRICTED FUNDS

Young Carers	Bespoke & tailored support to young carers and their families within the Borough of Stockton-on-Tees.
Tristar Homes Buzzin'	This funding is to deliver a project that gives young people in need, accredited outcomes and life skills.
Roseworth Big Local	These grants from Big Local are to provide for positive activities for young people in the Roseworth Ward of Stockton.
Youth Investment Fund	Deliver, expand and create high quality youth services to improve outcomes for young people.
Youth United Stockton	Delivery of one open access youth session per week for 50 weeks.
CCG Health Initiatives	Dedicated face to face and online counselling service for young carers.
Willan Trust	Working with young people in disadvantaged communities to combat crime/anti-social behaviour.

PURPOSES OF DESIGNATED FUNDS

Kathy Lindsey Memorial Fund, may be used at the discretion of the trustees to make grants to families in need.

Lucy Evers Memorial Fund is to be used to provide one-off grants to support children and young people in achieving their aspirations where little or no assistance is available elsewhere.

Redundancy Standby Fund is a contingency against any future redundancy costs.

11. ANALYSIS OF NET ASSETS BETWEEN FUNDS

	Unrestricted Funds	Restricted Funds	Total
	£	£	£
Fixed Assets	2764	-	2764
Net Current Assets	55197	33995	89192
	<u>57961</u>	<u>33995</u>	<u>91956</u>