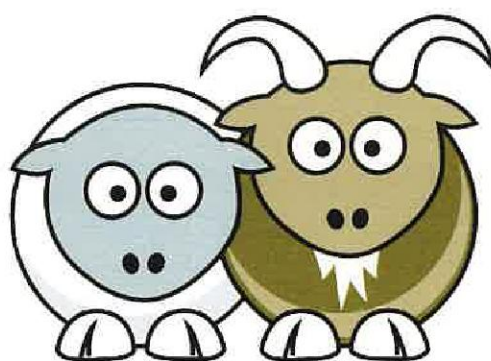


# Annual Report

2019



Stephens & George Centenary  
**CharitableTrust**

STEPHENS AND GEORGE CENTENARY CHARITABLE TRUST  
STATION ROAD, DOWLAIS, MERTHYR TYDFIL, CF48 3LP

CHARITY NUMBER: 1146009

TRUSTEES  
VANESSA JONES (CHAIR)  
HUW WILLIAMS (TREASURER)  
ANDREW PENDRIGH  
PETER LAWLOR  
LISA MYTTON

CHARITY COORDINATOR  
HELEN HUGHES



## **Mission statement**

The Stephens and George Centenary Charitable Trust puts young people at the heart of what we do and we will support them in their own ideas and passions in order to leave their own legacies within the community.

This is what we, at the Trust, strive for on a daily basis.

## **Chairperson report**

It is with continued pleasure to be here as Chairperson of the Charitable Trust.

Our initiatives are bearing fruit. The Charity's Financial Statements continue to show a positive upwards trend, with regard to funding, reserves and income.



We continue to cut our costs and outgoings whilst still delivering all of the services that we set out in our mission statement, and our aim is to be self sufficient within 5 years.

Helen and her staff highlighted literacy standards and consequently implemented vital procedures and influenced community behaviour, they are continuing to change cultural and social behaviour, which will without doubt change our society from one of poor literacy and poor personal demeanour, to a society of young people in the next generation, whose life skills, literacy and expectations will be far greater than we have had for several generations in Merthyr Tydfil.

*Vanessa Jones, Chair.*



## I. CONTENTS

---

Reading Support Programme .....	3
Chess Initiative .....	4
Volunteer Programme.....	7
Spread the Word Literature Festival .....	8
Bursary Award Scheme .....	9
Baby Bookworm Project.....	10
Newsletter Project .....	13
The Book Shop and Donation Scheme...	14
Dowlais Community Centre.....	15
Youth Camps and Clubs.....	16
Creative Libraries.....	17
A Year in the Life .....	18
Appendix 1: Financial Statements .....	22



## READING SUPPORT PROGRAMME

---

**Life is better when everyone can read well and express themselves confidently**



The Trust recruits, trains and supports volunteers to provide one-to-one literacy support at nurseries and primary schools to children who have fallen behind with their reading.

Trained reading support volunteers transform the lives of the children they interact with, turning them into confident, passionate and able readers.

The Trust has a robust training programme and are supported by the reading support mentor. We are also members of WCVA, VAMT & CWVYS and Chwarae Play so have access to professional training.

Childrens' earliest experiences define their outcomes in childhood and into adult life and those who fall behind before school often struggle to catch up. So, if we are looking to change the odds for the most disadvantaged children and improve their life chances, then we must focus on their early years.

**The Trust impacts on over 80 young people per week  
through the initiative.**



## CHESS INITIATIVE

---

The initiative is run in 13 schools in Merthyr Tydfil reaching out to over 350 children a week.

The Chess Initiative is supported by the Waterloo Foundation who fund the programme to extend into PRU units and Greenfield Special Needs School.

“More than 1 in 5 children are classified as Special Needs, chess has had a dramatic impact on their lives. It is exactly these children who will gain from chess. Improving their concentration levels which helps them to learn and develop in school raising their attainment levels”.

Chess has an important place in the life of Merthyr schools. No less than thirteen schools take part in our chess initiative, either by having lessons in class or through running lunchtime or after school clubs. The sessions are run by Russell Doddington or Hannah Richmond who has recently joined the team.



The aim of the initiative is to use chess to help develop children's thinking and learning skills. Through chess, they learn to solve problems, plan ahead, communicate effectively, learn from experience by recognising patterns, as well as gaining valuable social skills through playing and working together (and against each other of course). These skills not only help them with their work but offer them the chance to learn positive lessons for life.

Our chess syllabus is geared toward developing reasoning skills rather than simply learning the moves (for example, children are taught to look for choices and consider consequences and to plan ahead) and several cross-curricular skills and 'life skills' (for example by working together to achieve an aim) are developed.

As well as lessons, children are given opportunities to play competitively so that they can learn to win and lose well.

As a result of the work done in schools, Merthyr children have begun to participate in tournaments outside of their school. Local tournaments allow contact with parents. We also run a very successful tournament for schools in the Chess Initiative at the end of the academic year. All Wales tournaments allow children to match themselves against stronger and more experienced players. In both cases, horizons are widened and opportunities to make friends outside their immediate circles arise.

Merthyr children have begun to achieve success in Welsh junior chess competitions. Last year, Caedraw PS came second in the Welsh Primary Schools' Chess Championships and this year's joint under 11 Welsh Girls' champion also comes from that school. Several children did well in the second South Wales stage of the Delancey UK Schools' Chess Challenge (in which about 40,000 children take part nationwide).

With children, the chief measure of success is 'smiles on faces' and if that is what counts then we certainly succeed. However, we also get a steady stream of appreciative comments from schools as to the effect the activities have on the children, especially during lessons. And although the chief aim of the initiative is not to produce champions, it has been encouraging to see a number of schools and individuals do well in tournaments on a Wales-wide level. Some children have even gone on to represent Wales in their age group in matches against English regions or other countries.

The following schools have chess taught in lesson time:

Abercaniad Primary School, Caedraw Primary School, Gellifaelog Primary School, Greenfield School, Heolgerrig Primary School, Troedyrhiw Primary School, Ynysowen Primary School.

The following schools have clubs either during lunchtime or 'after school':

Abercanaid Primary School, Cyfarthfa Park Primary School, Cyfarthfa High School, Gwaunfarren Primary School, St Mary's RC Primary School, St Illtyd's RC Primary School, Ysgol Santes Tudful.

## **Ambassador Adams**



This year Michael Adams British Champion became the Ambassador of the Stephens and George Charitable Trust Chess Initiative.

### ***A foreword from Michael Adams:***

I was pleased and honoured to become an ambassador for the Stephens and George Charitable Trust. I recently had the opportunity to visit Caedraw Primary School as part of their Chess in Schools programme, to give a simul and show some chess puzzles as part of another project I am working on. The simul comprised of children from several schools, and there were a number of strong young players including Alex, Tabitha, Rio, Anshul, Jack and Nellie. The last of the games finished just shortly before the playing hall was due to be transformed, in a spectacularly efficient and seamless manner, into the canteen for lunch!

I was interesting to learn about the school's great success in Jaguar Primary School Challenge UK Final, a competition to design a 3D race car from scratch, where they won 4 out of 6 the six categories. There was a strong crossover with players who were successful in the South Wales Megafinals of the Delancy Chess Challenge. It is interesting to consider whether the two activities improve each other.





### *Background on Michael Adams*

Michael Adams is an English chess grandmaster. His highest ranking is world No. 4, achieved several times from October 2000 to October 2002. His peak Elo rating is 2761. He has achieved good results in World Chess Championship tournaments. Several times a World Championship Candidate, he reached the semifinals in 1997, 1999 and 2000. At the 2004 FIDE Championship, he reached the final, narrowly losing out to Rustam Kasimdzhanov in the tie-break games. He is also a seven-time British Chess Champion.



## VOLUNTEER PROGRAMME

---

We offer a range of training opportunities through the projects that we host. Run alongside this is accredited courses, youth work and play qualifications.

In the last year a number of our volunteers have gone on to full time employment in Schools, Accountancy firms, Youth work settings, Production line and office work at Stephens and George Print Group and other community projects as well as being employed at the Charitable Trust.

The Trust helps and develops placement students from Cardiff University undertaking a youth work degree.

The Trust would like to congratulate Elin Howells who has achieved a 1st Class Bachelors of Arts with Honors in Youth and Community Work. Elin had completed her final year at Cardiff Metropolitan University following a year's placement with the Trust. Well done Elin, we are very proud of you and wish you every success for your future career.

*George Hall states that "volunteering at the Charity has helped me gain my Level 2 Youth Work and Level 2 and 3 Playwork. I have also gained experience of how an organisation works as well as gaining confidence and improving self esteem. Volunteering has enabled me to work towards a career I enjoy".*



**The Trust has impacted on the lives of over 120 volunteers in 2018-2019 raising their life chances, their confidence as well as their qualifications and experience in youth work and play.**



## SPREAD THE WORD LITERATURE FESTIVAL

The Festival is now the largest event celebrating World Book Day in the UK.



The event each year is themed and there are over 120 workshops. The Trust takes over Merthyr Tydfil Town Centre and pops up the festival in 19 venues. (<http://www.walesonline.co.uk/whats-on/family-kids-news/merthyr-spread-word-festival-return-10727878>)

As well as reconstructing a themed area for children with street performers, props, marquees. Community Service partner with the Trust on the Festival, making all the props for the Festival from recycled materials, the materials are donated by Stephens and George Print Group. <https://www.walesonline.co.uk/whats-on/arts-culture-news/offenders-create-wonderland>

The Event commences with over 1000 children parading through the streets dressed as characters of books lead by street performers and musicians.

The Trust aim is to raise young people's life chances and the festival acts as a springboard showcasing opportunities and careers.

Last years theme was all about the Great Outdoors and the Charity partnered with Clybiau Plant to make dens. Giant sized dinosaurs roamed the town as well as over 40 authors, poets and illustrators who enthused the young people.



The Spread the Word Festival is supported by the Art Council of Wales.



Cyngor Celfyddydau Cymru  
Arts Council of Wales

## BURSARY AWARD SCHEME

---

The Stephens and George Charitable Trust Bursary Scheme: awards bursaries to young people who require support to progress in their education, to go on to further education or to local small Arts Organisations.

There are two types of bursaries

- A Bursary to support the costs of fees in attending school, university, college etc.
- A Bursary to support transport, meals, books and equipment costs.

The Trust have funded busaries to students at the Royal Welsh College, Oxford and Cambridge University and Monmouthshire Girls School and a local dance group for young people.

**ROYAL WELSH COLLEGE  
OF MUSIC & DRAMA  
COLEG BRENHINOL  
CERDD A DRAMA CYMRU**



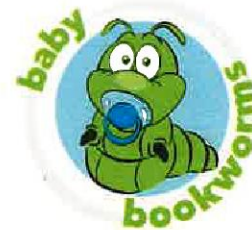


## BABY BOOKWORM PROJECT

---

Baby Bookworm is a literacy project run at the Stephens and George Charitable Trust, set up to encourage early literacy and inspire a love of words.

Literacy is key to individuals being able to actively participate and confidently communicate in the language rich world in which we live. When we can communicate confidently with spoken and written language, we can engage with the world for social, academic, economic and other benefits. Literacy is crucial to the success of individuals.



Early literacy includes speaking and listening skills such as taking turns, exploring sounds, sharing and collaboration, reflecting, following a story and looking at a book.. These skills are best learnt in a social environment and pre-school children benefit from being in a sociable group where they can enjoy these experiences and become confident with their peers. The project aims to provide interactive, multi-sensory activities in a language-rich environment that promotes positive relationships, supports language development and nurtures a love of language and books and prepares participants for school and beyond.



Baby Bookworm sessions consist of interactive and multi-sensory activities in a language-rich environment, promoting positive relationships, supporting language development and nurturing a love of language and books. We encourage parents and carers to actively engage with their child and enjoy the stories, songs and activities together and to share stories and songs at home. The sessions are a great way to meet new parents and carers and to share experiences and build support networks.

After five sessions every child receives a completed Baby Bookworm certificate that enables them to have a free book donated by the publishers Bloomsbury, Simon and Schuster, Little Tiger Press and Penguin.

During our Baby Bookworm sessions, participants enjoy healthy snacks.

The project also delivers sessions to local Primary School pupils and their parents. This support is aimed at developing literacy skills with activities which follows the Early Years Foundation Phase.



### **Tuesday: Baby Bookworm**

An active session aimed at babies and the very young, encouraging parents and carers to take part in activities that promote speaking and listening skills. This includes active play and games, stories and song, drama and free flow imaginary play, cwtching up with a book and sharing stories and songs. We design a craft based on the story's themes that helps children to think creatively, explore materials and parts, learn new concepts and vocabulary and practise pre-writing, encouraging fine and gross motor skills.

### **Tuesday Afternoon: Helping Your Child Become a Bookworm**

5 week Schools Programme

Designed to help parents support their child's literacy development. Each week has a skill focus, including: Exploring books, questioning, predicting, key words and sounds, text orientation, pre-writing skills and games, and storytelling.

### **Thursday Morning: Baby Bookworm at the Salvation Army**

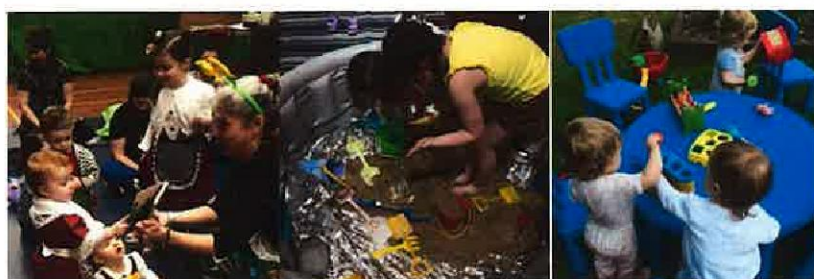
Delivered as part of the Salvation Army's playgroup session, children enjoy a story and then create artwork that explores the story's themes. The sessions take place in the Salvation Army's hall in Merthyr and enables the charity to have a good outreach with families from all the town.

### **Thursday Afternoon: Baby Bookworms Out To Lunch**

This session is enjoyed by pre-school children and children who have started to go to morning nursery. It focuses on meal times being a social time for talk and sharing, and it encourages families to try new foods and enjoy healthy cooking. The session also includes story, song and craft.

### **School Holidays: Holiday Fundays**

We also run camps throughout holidays which invite the Baby Bookworms and their siblings to enjoy stories and play that are based on a theme. Books are bought from publishing houses at a great discount and sold as part of the events and this is one way for us to generate funds.



*"I started to take my little boy to Baby Bookworm when he was 7 months old, it has been wonderful to see him grow up with the other children and now be ready for school. It helped with his English and as an only child, his friendships with others."*

*"We both look forward to these sessions, it's a joy to share such a well structured and enjoyable morning – can't wait to come back!"*

*"Baby Bookworm helped my child progress so much for pre-school – which she absolutely loves"*

*"One of the most lovely and well organised and structured groups we have been to"*





Baby Bookworm is coordinated by childrens' author and Early Years specialist, Sarah Kilbride and a team of volunteers who all bring a wealth of skills and experience.

Sarah is an Early Years teacher with experience of working in special schools and mainstream primary and secondary schools. Her skills include planning and delivering sessions tailored to participants' needs, Makaton sign language, and using drama to support learning.

Sarah is the author and creator of the series Princess Evie's Ponies and Being a Princess is Very Hard Work. Her latest book, A Cuddle and a Cwtch reached number 3 in the Welsh Book Council's Picture Book chart! Sarah has a useful network of authors, editors and publicists at major publishing houses that gives the charity access to discounts and book deals and contacts with regards to author visits and workshops.

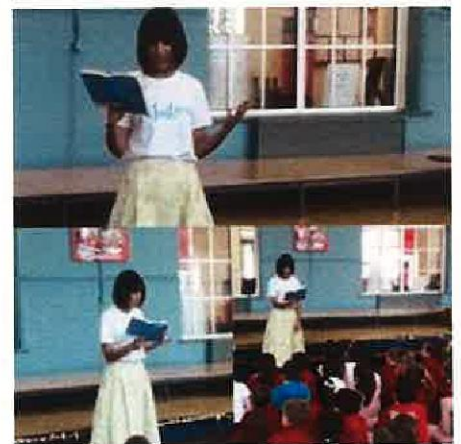


In 2018-2019 Lucy Owen Became the Ambassador for the Baby Bookworm Project.

Lucy Owen, TV news presenter Lucy is regularly welcomed into our homes as part of the BBC's Wales Today and X-Ray programmes.

She joined HTV Wales in 1995 as a newsreader for regional opt-outs during GMTV, and between 1996 and 2007, she co-presented Wales Tonight, the regional news programme, broadcast on ITV Wales from Cardiff.

Lucy Owen has penned numerous childrens books including a new childrens' called Sea House and she has run workshops at the Spread the Word Festival to enthuse the Young People.



## NEWSLETTER PROJECT

---

The Newsletter project is supported by Stephens and George Print Group and Children in Need.



The magazine is written by young people for young people from the age of 10 to 25 years, and is an innovative way to inspire and engage with young people to develop their interest and ability in reading and writing.

The Project supports aspiring writers and journalist in their ambitions and provides young people with empowering opportunities that improve their literacy skills.

As part of the project our creative writers and voluntary interns have the opportunity to meet iconic Welsh figures such as Jonny Duddle the Harry Potter illustrator, Politicians and Scientists. Trips to visit the Banksy Artwork, a graffiti tour and visit to the Hay Festival.

The Young people write about their experiences, design the questions and it is a fantastic way to educate young people with alternative opportunities, who may consider working within journalism or creative writing.





## THE BOOK SHOP AND BOOK DONATION SCHEME

---

The Trust aim is to raise literacy standards in Merthyr Tydfil and to make books accessible to all , the absence of a book shop in Merthyr Tydfil would have resulted in people in the community travelling outside the area.



The shops sells in the main second hand books donated from the general public, as well as 28 companies across Merthyr Tydfil such as the Welsh Assembly, Merthyr Tydfil County Council, The Orbit Centre, ASDA, Local Authority etc.

The Charity has an online eBay account as well as selling books on Ziffit, Music Magpie etc. and is run solely by volunteers.

We have become members of the Booksellers Association and this year we have expanded our Author School Tours to primary and secondary schools.

We have had PG Bell launch his new book at the Charity, Helen Lipscombe visited local schools and the amazing Thomas Lennon from Hollywood who enthused and inspired the young people around his stories of Hollywood and the film he wrote "Night at the Museum".



The Charity donates books Free of Charge to children in need or who do not have a book at home as part of its initiative to raise literacy standards.

## DOWLAIS COMMUNITY CENTRE

In 2016 the trust asset transferred the Dowlais Community Centre and has been able to develop its initiatives and ethos of the charity.



The Trust has developed the Community Centre and it has now become a hub in the local community with an array of classes and tutors and partnership agencies using the building from the Carers Association, PRU Unit, Home Schooling, Archery, Boxing Gym, the Urdd and lots more.

Community hubs can benefit the community in many more ways than only providing services. They can:

- Help build more cohesive and resilient communities
- Build better and more integrated services
- Transform existing, unused buildings
- Provide a focus for community-led regeneration

The Trust has received funding to create a Community Café and a more environmentally friendly building with Windows in the main hall providing natural light.

The Trust is striving every day to be a sustainable facility and hope that these improvements will enable us to achieve this.

Over 1000 people in the Community utilise the building on a weekly basis and it has become a hub in the local community.





## YOUTH CAMPS AND CLUBS

The Trust runs a well established Play project and Youth project in Merthyr Tydfil and are members of CWYVYS, Boys and Grls Club of Wales, as well as Clybiau Plant.

At the Youth Club & Half-Term Camps, there is a **no computer and no phone policy** and the focus of learning is around Arts, Literature, the outdoors, cooking, sport and gardening.

The Trust partners with with Cybiau Plant to train volunteers to become qualified playworkers.



The Project is funded for three years by Children In Need and through the ethos of play, Newsletter project and the outdoors we support young people to improve their life choices, well-being, and how they feel about themselves.



The Trust has worked with over 250 Children this year on the Youth and Play Clubs and Summer Camp programme improving young peoples life chances by giving them opportunities and new skills.

## CREATIVE LIBRARIES

---

The Trust has created themed libraries within several schools in the area; its goal – to encourage reading and writing as a form of creative self-expression is perfectly embodied in the creation of the Narnia Library and the Alice in Wonderland workrooms at the Goetre school in the Gurnos Estate, an outdoor theme at Greenfield School.



Young people are provided with an imaginative, beautiful surrounding which encourages them to read and write on their own initiative and shares the power and enjoyment that the written word can bring. These libraries were created from scratch using only donated materials and the time and resources of local residents who were entrusted with the goals of the Trust.

In order to cultivate a society in which an appreciation of reading and writing is prevalent and to encourage these media forms of creative self-expression, the Trust has created a series of imaginatively themed creative spaces for young people.

Allowing young people to be immersed in a literary and visually stimulating environment allows them the opportunity to discover literature in their own way and at their own pace. These spaces encourage them to consider picking up a book or writing a short story in these beautiful spaces instead of switching on the television.

The spaces have all been created from donated and recycled material, which ties in directly with MTCBC Re-use scheme. Volunteers donated their time and talent to build the spaces up from literally nothing but an empty room. Several of these volunteers have gone on to full time employment as a result of their work on these projects.

The Stephens & George Centenary Charitable Trust has been running since February 21st 2012 in response to the incredibly low literacy levels in the local community. The Trust's core aims are to provide future generations with the means to develop skilled, useful and fulfilling careers for themselves from within one of the UK's most disaffected areas.

As the Trust reaches the end of this year it begins to expand further into the community, collaborating with the local authority in basic skills workshops for second language English speakers. The forthcoming project aims to work with the parents of children whose second language is English and who may struggle in school as a result in this.

Looking to the future the Trust's long term goals involve forming a productive alliance with other local PLCs, private companies and government agencies to tackle the educational apathy and to turn around attitudes towards self-improvement in the local community. The trust recognises that communities have the ability to turn themselves around and provide solutions to their own problems if provided with adequate resources, motivation and opportunities.





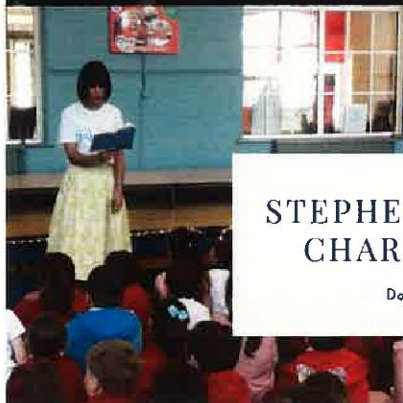
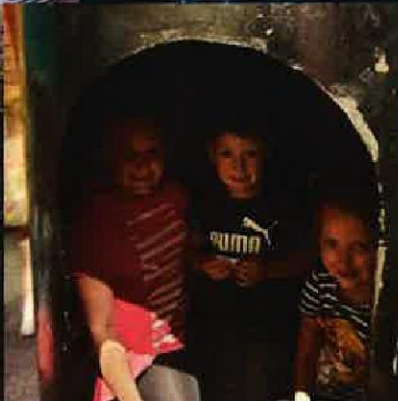
## A Year in the Life of Stephens and George Charitable Trust







# A YEAR IN THE LIFE OF STEPHENS AND GEORGE CHARITABLE TRUST



STEPHENS AND GEORGE  
CHARITABLE TRUST

Dowlais Community Centre





## AWARDS

### WELSH CHARITY AWARD: ORGANISATION OF THE YEAR FINALIST – HIGHLY COMMENDED



### GREEN FLAG AWARD – COMMUNITY GARDEN



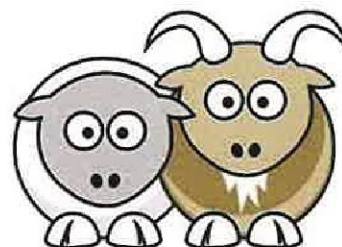
### BRONZE AWARD SMALL WORKPLACE HEALTH AWARD



### INVESTORS IN VOLUNTEERS



GIVE SOMETHING BACK TO  
YOUR COMMUNITY



Stephens & George Centenary  
**CharitableTrust**

T: 01685 375331 / 377688

E: [helen.hughes@stephensandgeorge.co.uk](mailto:helen.hughes@stephensandgeorge.co.uk)

W: [www.sg100charitabletrust.org.uk](http://www.sg100charitabletrust.org.uk)

FACEBOOK: @sgdccentre

INSTAGRAM: @stevensandgeorge

TWITTER: @stevegeorge100



**APPENDIX 1: FINANCIAL STATEMENTS FOR YEAR ENDED  
31 MARCH 2019**

---





**REGISTERED CHARITY NUMBER:**

**REPORT OF THE TRUSTEES AND  
UNAUDITED FINANCIAL STATEMENTS FOR THE YEAR  
ENDED 31 MARCH 2019  
FOR  
STEPHENS AND GEORGE CENTENARY CHARITABLE  
TRUST**

Bevan Buckland LLP  
Langdon House  
Langdon Road  
SA1 Swansea Waterfront  
Swansea  
SA1 8QY

**STEPHENS AND GEORGE CENTENARY CHARITABLE  
TRUST**

**CONTENTS OF THE FINANCIAL STATEMENTS  
FOR THE YEAR ENDED 31 MARCH 2019**

	<b>Page</b>
Report of the Trustees	<b>1</b>
Independent Examiner's Report	<b>2</b>
Statement of Financial Activities	<b>3</b>
Balance Sheet	<b>4</b>
Notes to the Financial Statements	<b>5 to 17</b>
Detailed Statement of Financial Activities	<b>18 to 19</b>

**STEPHENS AND GEORGE CENTENARY CHARITABLE  
TRUST**

**REPORT OF THE TRUSTEES  
FOR THE YEAR ENDED 31 MARCH 2019**

The trustees present their report with the financial statements of the charity for the year ended 31 March 2019. The trustees have adopted the provisions of Accounting and Reporting by Charities: Statement of Recommended Practice applicable to charities preparing their accounts in accordance with the Financial Reporting Standard applicable in the UK and Republic of Ireland (FRS 102) (effective 1 January 2015).

**STRUCTURE, GOVERNANCE AND MANAGEMENT**

**Governing document**

The charity is controlled by its governing document, a deed of trust, and constitutes an unincorporated charity.

**REFERENCE AND ADMINISTRATIVE DETAILS**

**Registered Charity number**

**Principal address**

Stephens & George Ltd  
Goat Mill Road  
Dowlais  
Merthyr Tydfil  
CF48 3TD

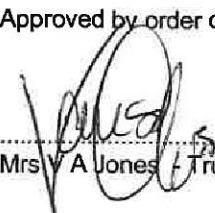
**Trustees**

Mrs V A Jones  
Councillor L Mytton  
A H Williams  
P J Lawlor  
A Pendrigh

**Independent examiner**

Bevan Buckland LLP  
Langdon House  
Langdon Road  
SA1 Swansea Waterfront  
Swansea  
SA1 8QY

Approved by order of the board of trustees on ..... 27/1/20 ..... and signed on its behalf by:

  
.....  
Mrs V A Jones - Trustee



**INDEPENDENT EXAMINER'S REPORT TO THE TRUSTEES OF  
STEPHENS AND GEORGE CENTENARY CHARITABLE  
TRUST**

**Independent examiner's report to the trustees of Stephens and George Centenary Charitable Trust**

I report to the charity trustees on my examination of the accounts of the Stephens and George Centenary Charitable Trust (the Trust) for the year ended 31 March 2019.

**Responsibilities and basis of report**

As the charity trustees of the Trust you are responsible for the preparation of the accounts in accordance with the requirements of the Charities Act 2011 ('the Act').

I report in respect of my examination of the Trust's accounts carried out under section 145 of the Act and in carrying out my examination I have followed all applicable Directions given by the Charity Commission under section 145(5)(b) of the Act.

**Independent examiner's statement**

I have completed my examination. I confirm that no material matters have come to my attention in connection with the examination giving me cause to believe that in any material respect:

1. accounting records were not kept in respect of the Trust as required by section 130 of the Act; or
2. the accounts do not accord with those records; or
3. the accounts do not comply with the applicable requirements concerning the form and content of accounts set out in the Charities (Accounts and Reports) Regulations 2008 other than any requirement that the accounts give a true and fair view which is not a matter considered as part of an independent examination.

I have no concerns and have come across no other matters in connection with the examination to which attention should be drawn in this report in order to enable a proper understanding of the accounts to be reached.

Henry Lloyd Davies  
Bevan Buckland LLP  
Langdon House  
Langdon Road  
SA1 Swansea Waterfront  
Swansea  
SA1 8QY

Date: .....

**STEPHENS AND GEORGE CENTENARY CHARITABLE  
TRUST**

**STATEMENT OF FINANCIAL ACTIVITIES  
FOR THE YEAR ENDED 31 MARCH 2019**

	Notes	Unrestricted funds £	Restricted funds £	2019 Total funds £	2018 Total funds £
<b>INCOME AND ENDOWMENTS FROM</b>					
Donations and legacies		107,572	(14,595)	92,977	352,565
<b>Total</b>		107,572	(14,595)	92,977	352,565
<b>EXPENDITURE ON</b>					
<b>Charitable activities</b>					
Dowlais community centre		27,017	34,182	61,199	38,105
Community advancement projects		90,064	43,664	133,728	105,280
<b>Total</b>		117,081	77,846	194,927	143,385
<b>NET INCOME/(EXPENDITURE)</b>		(9,509)	(92,441)	(101,950)	209,180
<b>Transfers between funds</b>	9	(7,180)	7,180	-	-
<b>Net movement in funds</b>		(16,689)	(85,261)	(101,950)	209,180
<b>RECONCILIATION OF FUNDS</b>					
<b>Total funds brought forward</b>		56,883	316,685	373,568	164,388
<b>TOTAL FUNDS CARRIED FORWARD</b>		40,194	231,424	271,618	373,568

The notes form part of these financial statements

**STEPHENS AND GEORGE CENTENARY CHARITABLE  
TRUST**

**BALANCE SHEET  
AT 31 MARCH 2019**

	Notes	Unrestricted funds £	Restricted funds £	2019 Total funds £	2018 Total funds £
<b>FIXED ASSETS</b>					
Tangible assets	6	1,790	110,848	112,638	73,363
<b>CURRENT ASSETS</b>					
Debtors	7	4,325	29,471	33,796	170,337
Cash at bank		59,299	91,105	150,404	144,815
		<u>63,624</u>	<u>120,576</u>	<u>184,200</u>	<u>315,152</u>
<b>CREDITORS</b>					
Amounts falling due within one year	8	(25,220)	-	(25,220)	(14,947)
<b>NET CURRENT ASSETS</b>		<u>38,404</u>	<u>120,576</u>	<u>158,980</u>	<u>300,205</u>
<b>TOTAL ASSETS LESS CURRENT LIABILITIES</b>		<u>40,194</u>	<u>231,424</u>	<u>271,618</u>	<u>373,568</u>
<b>NET ASSETS</b>		<u>40,194</u>	<u>231,424</u>	<u>271,618</u>	<u>373,568</u>
<b>FUNDS</b>	9				
Unrestricted funds				40,194	56,883
Restricted funds				<u>231,424</u>	<u>316,685</u>
<b>TOTAL FUNDS</b>				<u>271,618</u>	<u>373,568</u>

The financial statements were approved by the Board of Trustees on ..... and were signed on its behalf by:

.....  
Mrs V A Jones -Trustee



**STEPHENS AND GEORGE CENTENARY CHARITABLE  
TRUST**

**NOTES TO THE FINANCIAL STATEMENTS  
FOR THE YEAR ENDED 31 MARCH 2019**

**1. STATUTORY INFORMATION**

Stephens and George Centenary Charitable Trust is a charitable trust registered in England and Wales. The charity's registered number is 1146009 and charity address is Goat Mill Road, Dowlais, Merthyr Tydfil, CF48 3TD.

The presentation currency of the financial statements is the Pound Sterling (£).

**2. ACCOUNTING POLICIES**

**Basis of preparing the financial statements**

The financial statements of the charity, which is a public benefit entity under FRS 102, have been prepared in accordance with the Charities SORP (FRS 102) 'Accounting and Reporting by Charities: Statement of Recommended Practice applicable to charities preparing their accounts in accordance with the Financial Reporting Standard applicable in the UK and Republic of Ireland (FRS 102) (effective 1 January 2015)', Financial Reporting Standard 102 'The Financial Reporting Standard applicable in the UK and Republic of Ireland' and the Charities Act 2011. The financial statements have been prepared under the historical cost convention.

The trustees consider that there are no material uncertainties about the charity's ability to continue as a going concern.

**Financial reporting standard 102 - reduced disclosure exemptions**

The charity has taken advantage of the following disclosure exemption in preparing these financial statements, as permitted by FRS 102 'The Financial Reporting Standard applicable in the UK and Republic of Ireland':

- the requirements of Section 7 Statement of Cash Flows.

**Income**

All income is recognised in the Statement of Financial Activities once the charity has entitlement to the funds, it is probable that the income will be received and the amount can be measured reliably.

**Expenditure**

Liabilities are recognised as expenditure as soon as there is a legal or constructive obligation committing the charity to that expenditure, it is probable that a transfer of economic benefits will be required in settlement and the amount of the obligation can be measured reliably. Expenditure is accounted for on an accruals basis and has been classified under headings that aggregate all cost related to the category. Where costs cannot be directly attributed to particular headings they have been allocated to activities on a basis consistent with the use of resources.

**Tangible fixed assets**

Depreciation is provided at the following annual rates in order to write off each asset over its estimated useful life.

Freehold property	- 10% on cost
Fixtures and fittings	- 25% on cost

**Taxation**

The charity is exempt from tax on its charitable activities.

**STEPHENS AND GEORGE CENTENARY CHARITABLE  
TRUST**

**NOTES TO THE FINANCIAL STATEMENTS - CONTINUED  
FOR THE YEAR ENDED 31 MARCH 2019**

**2. ACCOUNTING POLICIES - continued**

**Fund accounting**

Unrestricted funds can be used in accordance with the charitable objectives at the discretion of the trustees.

Restricted funds can only be used for particular restricted purposes within the objects of the charity. Restrictions arise when specified by the donor or when funds are raised for particular restricted purposes.

Further explanation of the nature and purpose of each fund is included in the notes to the financial statements.

**Pension costs and other post-retirement benefits**

The charity operates a defined contribution pension scheme. Contributions payable to the charity's pension scheme are charged to the Statement of Financial Activities in the period to which they relate.

**Debtors**

Trade and other debtors are recognised at the settlement amount after any trade discount offered. Prepayments are valued at the amount prepaid net of any trade discounts due.

**Cash at bank and in hand**

Cash at bank and cash in hand includes cash and short term highly liquid investments with a short maturity of three months or less from the date of acquisition or opening of the deposit or similar account.

**Creditors and provisions**

Creditors and provisions are recognised where the charity has a present obligation resulting from a past event that will probably result in the transfer of funds to a third party and the amount due to settle the obligation can be measured or estimated reliably. Creditors and provisions are normally recognised at their settlement amount after allowing for any trade discounts due.

**3. TRUSTEES' REMUNERATION AND BENEFITS**

There were no trustees' remuneration or other benefits for the year ended 31 March 2019 nor for the year ended 31 March 2018.

**Trustees' expenses**

There were no trustees' expenses paid for the year ended 31 March 2019 nor for the year ended 31 March 2018.

**4. STAFF COSTS**

The average monthly number of employees during the year was as follows:

	2019	2018
Project operation and logistics	4	4
	<u>4</u>	<u>4</u>

No employees received emoluments in excess of £60,000.

The total remuneration paid to key management during the year was £45,569 (2018: 45,403)

**STEPHENS AND GEORGE CENTENARY CHARITABLE  
TRUST**

**NOTES TO THE FINANCIAL STATEMENTS - CONTINUED  
FOR THE YEAR ENDED 31 MARCH 2019**

**5. COMPARATIVES FOR THE STATEMENT OF FINANCIAL ACTIVITIES**

	Unrestricted funds £	Restricted funds £	Total funds £
<b>INCOME AND ENDOWMENTS FROM</b>			
Donations and legacies	97,788	254,777	352,565
<b>Total</b>	97,788	254,777	352,565
 <b>EXPENDITURE ON</b>			
<b>Charitable activities</b>			
Dowlais community centre	33,261	4,844	38,105
Community advancement projects	78,464	26,816	105,280
<b>Total</b>	111,725	31,660	143,385
 <b>NET INCOME/(EXPENDITURE)</b>	(13,937)	223,117	209,180
 <b>Transfers between funds</b>	24,079	(24,079)	-
 <b>Net movement in funds</b>	10,142	199,038	209,180
 <b>RECONCILIATION OF FUNDS</b>			
<b>Total funds brought forward</b>	46,741	117,647	164,388
 <b>TOTAL FUNDS CARRIED FORWARD</b>	56,883	316,685	373,568



**STEPHENS AND GEORGE CENTENARY CHARITABLE  
TRUST**

**NOTES TO THE FINANCIAL STATEMENTS - CONTINUED  
FOR THE YEAR ENDED 31 MARCH 2019**

**6. TANGIBLE FIXED ASSETS**

	Freehold property £	Fixtures and fittings £	Totals £
<b>COST</b>			
At 1 April 2018	67,587	12,283	79,870
Additions	50,084	319	50,403
At 31 March 2019	<u>117,671</u>	<u>12,602</u>	<u>130,273</u>
<b>DEPRECIATION</b>			
At 1 April 2018	-	6,507	6,507
Charge for year	7,845	3,283	11,128
At 31 March 2019	<u>7,845</u>	<u>9,790</u>	<u>17,635</u>
<b>NET BOOK VALUE</b>			
At 31 March 2019	<u>109,826</u>	<u>2,812</u>	<u>112,638</u>
At 31 March 2018	<u>67,587</u>	<u>5,776</u>	<u>73,363</u>

**7. DEBTORS: AMOUNTS FALLING DUE WITHIN ONE YEAR**

	2019 £	2018 £
Trade debtors	2,200	3,416
Other debtors	31,596	166,921
	<u>33,796</u>	<u>170,337</u>

**8. CREDITORS: AMOUNTS FALLING DUE WITHIN ONE YEAR**

	2019 £	2018 £
Trade creditors	6,732	2,599
Taxation and social security	1,910	1,653
Other creditors	16,578	10,695
	<u>25,220</u>	<u>14,947</u>

**STEPHENS AND GEORGE CENTENARY CHARITABLE  
TRUST**

**NOTES TO THE FINANCIAL STATEMENTS - CONTINUED  
FOR THE YEAR ENDED 31 MARCH 2019**

**9. MOVEMENT IN FUNDS**

	At 1.4.18 £	Net movement in funds £	Transfers between funds £	At 31.3.19 £
<b>Unrestricted funds</b>				
General fund	29,877	(8,633)	(7,499)	13,745
Capital fund - Office equipment	2,006	(876)	319	1,449
Designated fund - HUB Project	25,000	-	-	25,000
	<u>56,883</u>	<u>(9,509)</u>	<u>(7,180)</u>	<u>40,194</u>
<b>Restricted funds</b>				
Animal Grant	4,625	(807)	-	3,818
Baby Book Worm	2,303	(1,027)	-	1,276
Best Foot Forward Project	4,345	(2,205)	-	2,140
Big Music Project	3,356	(2,272)	-	1,084
Bookshop	454	-	-	454
Capital fund - Gym equipment	2,828	(1,806)	-	1,022
Chess in Schools Project	-	(2,252)	2,252	-
Children in Need	30,000	(2,850)	-	27,150
Clothworkers Foundation	10,000	-	-	10,000
Coalfields Regeneration	39	-	-	39
Coalfields Regeneration (Heat & Light)	4,251	-	-	4,251
Community Chest - Football & Netball	1,486	-	-	1,486
Creative Library	1,555	-	-	1,555
Festival of Learning	566	-	-	566
Gardening Project	112	(293)	181	-
Literacy Festival & World Book Day Fund	-	(1,261)	1,261	-
Literacy Workshops	700	-	-	700
Merthyr Valley Homes	911	(227)	-	684
Newsletter Project	945	-	-	945
Rhondda Cynon Taff - Welsh Church Act	46,698	(46,698)	-	-
Skiathos Fund	7,742	(2,212)	-	5,530
Sportslot	1,048	-	-	1,048
Stephens & George - Bursary	17,000	(4,443)	-	12,557
Stephens & George - Library	20,000	-	-	20,000
Stephens & George - Monmouth	10,405	-	-	10,405
Summer Camp	2,575	-	-	2,575
Vegetarian Society	370	-	-	370
WCVA - Active Inclusion	22,380	(25,445)	3,065	-
Welsh Assembly Government	117,250	(7,845)	421	109,826
Youth Camp	2,741	(15)	-	2,726
Eramus	-	572	-	572
Clybiau Plant Cymru	-	2,671	-	2,671
Coalfields Cafe	-	5,536	-	5,536
Voluntary Action Methyr Tydfil	-	438	-	438
	<u>316,685</u>	<u>(92,441)</u>	<u>7,180</u>	<u>231,424</u>
<b>TOTAL FUNDS</b>	<u>373,568</u>	<u>(101,950)</u>	<u>-</u>	<u>271,618</u>

**STEPHENS AND GEORGE CENTENARY CHARITABLE  
TRUST**

**NOTES TO THE FINANCIAL STATEMENTS - CONTINUED  
FOR THE YEAR ENDED 31 MARCH 2019**

**9. MOVEMENT IN FUNDS - continued**

Net movement in funds, included in the above are as follows:

	Incoming resources £	Resources expended £	Movement in funds £
<b>Unrestricted funds</b>			
General fund	107,572	(116,205)	(8,633)
Capital fund - Office equipment	-	(876)	(876)
	<u>107,572</u>	<u>(117,081)</u>	<u>(9,509)</u>
<b>Restricted funds</b>			
Baby Book Worm	6,288	(7,315)	(1,027)
Big Music Project	-	(2,272)	(2,272)
Capital fund - Gym equipment	-	(1,806)	(1,806)
Chess in Schools Project	8,373	(10,625)	(2,252)
Children in Need	-	(2,850)	(2,850)
Gardening Project	-	(293)	(293)
Literacy Festival & World Book Day Fund	13,900	(15,161)	(1,261)
Merthyr Valley Homes	-	(227)	(227)
Rhondda Cynon Taff - Welsh Church Act	(46,698)	-	(46,698)
WCVA - Active Inclusion	(9,716)	(15,729)	(25,445)
Welsh Assembly Government	-	(7,845)	(7,845)
Youth Camp	-	(15)	(15)
Eramus	1,618	(1,046)	572
Clybiau Plant Cymru	3,040	(369)	2,671
Coalfields Cafe	7,000	(1,464)	5,536
Voluntary Action Methyr Tydfil	1,600	(1,162)	438
Animal Grant	-	(807)	(807)
Best Foot Forward Project	-	(2,205)	(2,205)
Skiathos Fund	-	(2,212)	(2,212)
Stephens & George - Bursary	-	(4,443)	(4,443)
	<u>(14,595)</u>	<u>(77,846)</u>	<u>(92,441)</u>
<b>TOTAL FUNDS</b>	<u><u>92,977</u></u>	<u><u>(194,927)</u></u>	<u><u>(101,950)</u></u>



**STEPHENS AND GEORGE CENTENARY CHARITABLE  
TRUST**

**NOTES TO THE FINANCIAL STATEMENTS - CONTINUED  
FOR THE YEAR ENDED 31 MARCH 2019**

**9. MOVEMENT IN FUNDS - continued**

**Comparatives for movement in funds**

	At 1.4.17 £	Net movement in funds £	Transfers between funds £	At 31.3.18 £
<b>Unrestricted Funds</b>				
General fund	46,393	(13,557)	(2,959)	29,877
Capital fund - Office equipment	348	(380)	2,038	2,006
Designated fund - HUB Project	-	-	25,000	25,000
	<u>46,741</u>	<u>(13,937)</u>	<u>24,079</u>	<u>56,883</u>
<b>Restricted Funds</b>				
Animal Grant	5,000	(375)	-	4,625
Baby Book Worm	9,547	(7,244)	-	2,303
Best Foot Forward Project	4,505	(160)	-	4,345
Big Music Project	1,053	2,303	-	3,356
Bookshop	454	-	-	454
Capital fund - Gym equipment	2,304	(397)	921	2,828
Children in Need	-	30,000	-	30,000
Clothworkers Foundation	-	10,000	-	10,000
Coalfields Regeneration	39	-	-	39
Coalfields Regeneration (Heat & Light)	4,251	-	-	4,251
Community Chest - Football & Netball	1,486	-	-	1,486
Creative Library	1,555	-	-	1,555
Festival of Learning	766	(200)	-	566
Gardening Project	-	112	-	112
HUB Project	25,000	-	(25,000)	-
Literacy Workshops	700	-	-	700
Merthyr Valley Homes	-	911	-	911
Newsletter Project	945	-	-	945
Rhondda Cynon Taff - Welsh Church Act	-	46,698	-	46,698
Skiathos Fund	8,000	(258)	-	7,742
Sportslot	-	1,048	-	1,048
Starbucks UK Youth (Cafe Bar)	842	(842)	-	-
Stephens & George - Bursary	17,000	-	-	17,000
Stephens & George - Library	20,000	-	-	20,000
Stephens & George - Monmouth	11,405	(1,000)	-	10,405
Summer Camp	2,575	-	-	2,575
Vegetarian Society	220	150	-	370
WCVA - Active Inclusion	-	22,380	-	22,380
Welsh Assembly Government	-	117,250	-	117,250
Youth Camp	-	2,741	-	2,741
	<u>117,647</u>	<u>223,117</u>	<u>(24,079)</u>	<u>316,685</u>
<b>TOTAL FUNDS</b>	<u>164,388</u>	<u>209,180</u>	<u>-</u>	<u>373,568</u>

**STEPHENS AND GEORGE CENTENARY CHARITABLE  
TRUST**

**NOTES TO THE FINANCIAL STATEMENTS - CONTINUED  
FOR THE YEAR ENDED 31 MARCH 2019**

**9. MOVEMENT IN FUNDS - continued**

Comparative net movement in funds, included in the above are as follows:

	Incoming resources £	Resources expended £	Movement in funds £
<b>Unrestricted funds</b>			
General fund	97,788	(111,345)	(13,557)
Capital fund - Office equipment	-	(380)	(380)
	<u>97,788</u>	<u>(111,725)</u>	<u>(13,937)</u>
<b>Restricted funds</b>			
Big Music Project	2,603	(300)	2,303
Capital fund - Gym equipment	1,409	(1,806)	(397)
Chess in Schools Project	7,008	(7,008)	-
Children in Need	30,000	-	30,000
Clothworkers Foundation	10,000	-	10,000
Gardening Project	405	(293)	112
Literacy Festival & World Book Day Fund	7,950	(7,950)	-
Merthyr Valley Homes	911	-	911
Rhondda Cynon Taff - Welsh Church Act	46,698	-	46,698
Sportslot	1,492	(444)	1,048
Vegetarian Society	150	-	150
WCVA - Active Inclusion	25,000	(2,620)	22,380
Welsh Assembly Government	117,250	-	117,250
Youth Camp	3,901	(1,160)	2,741
Animal Grant	-	(375)	(375)
Baby Book Worm	-	(7,244)	(7,244)
Best Foot Forward Project	-	(160)	(160)
Festival of Learning	-	(200)	(200)
Skiathos Fund	-	(258)	(258)
Starbucks UK Youth (Cafe Bar)	-	(842)	(842)
Stephens & George - Monmouth	-	(1,000)	(1,000)
	<u>254,777</u>	<u>(31,660)</u>	<u>223,117</u>
<b>TOTAL FUNDS</b>	<u>352,565</u>	<u>(143,385)</u>	<u>209,180</u>

**STEPHENS AND GEORGE CENTENARY CHARITABLE  
TRUST**

**NOTES TO THE FINANCIAL STATEMENTS - CONTINUED  
FOR THE YEAR ENDED 31 MARCH 2019**

**9. MOVEMENT IN FUNDS - continued**

A current year 12 months and prior year 12 months combined position is as follows:

	At 1.4.17 £	Net movement in funds £	Transfers between funds £	At 31.3.19 £
<b>Unrestricted funds</b>				
General fund	46,393	(22,190)	(10,458)	13,745
Capital fund - Office equipment	348	(1,256)	2,357	1,449
Designated fund - HUB Project	-	-	25,000	25,000
<b>Restricted funds</b>				
Animal Grant	5,000	(1,182)	-	3,818
Baby Book Worm	9,547	(8,271)	-	1,276
Best Foot Forward Project	4,505	(2,365)	-	2,140
Big Music Project	1,053	31	-	1,084
Bookshop	454	-	-	454
Capital fund - Gym equipment	2,304	(2,203)	921	1,022
Chess In Schools Project	-	(2,252)	2,252	-
Children in Need	-	27,150	-	27,150
Clothworkers Foundation	-	10,000	-	10,000
Coalfields Regeneration	39	-	-	39
Coalfields Regeneration (Heat & Light)	4,251	-	-	4,251
Community Chest - Football & Netball	1,486	-	-	1,486
Creative Library	1,555	-	-	1,555
Festival of Learning	766	(200)	-	566
Gardening Project	-	(181)	181	-
HUB Project	25,000	-	(25,000)	-
Literacy Festival & World Book Day Fund	-	(1,261)	1,261	-
Literacy Workshops	700	-	-	700
Merthyr Valley Homes	-	684	-	684
Newsletter Project	945	-	-	945
Skiathos Fund	8,000	(2,470)	-	5,530
Sportslot	-	1,048	-	1,048
Starbucks UK Youth (Cafe Bar)	842	(842)	-	-
Stephens & George - Bursary	17,000	(4,443)	-	12,557
Stephens & George - Library	20,000	-	-	20,000
Stephens & George - Monmouth	11,405	(1,000)	-	10,405
Summer Camp	2,575	-	-	2,575
Vegetarian Society	220	150	-	370
WCVA - Active Inclusion	-	(3,065)	3,065	-
Welsh Assembly Government	-	109,405	421	109,826
Youth Camp	-	2,726	-	2,726
Eramus	-	572	-	572
Clybiau Plant Cymru	-	2,671	-	2,671
Coalfields Cafe	-	5,536	-	5,536
Voluntary Action Methyr Tydfil	-	438	-	438
	<u>117,647</u>	<u>130,676</u>	<u>(16,899)</u>	<u>231,424</u>
<b>TOTAL FUNDS</b>	<u>164,388</u>	<u>107,230</u>	<u>-</u>	<u>271,618</u>



**STEPHENS AND GEORGE CENTENARY CHARITABLE  
TRUST**

**NOTES TO THE FINANCIAL STATEMENTS - CONTINUED  
FOR THE YEAR ENDED 31 MARCH 2019**

**9. MOVEMENT IN FUNDS - continued**

A current year 12 months and prior year 12 months combined net movement in funds, included in the above are as follows:

	Incoming resources £	Resources expended £	Movement in funds £
<b>Unrestricted funds</b>			
General fund	205,360	(227,550)	(22,190)
Capital fund - Office equipment	-	(1,256)	(1,256)
	<u>205,360</u>	<u>(228,806)</u>	<u>(23,446)</u>
<b>Restricted funds</b>			
Baby Book Worm	6,288	(14,559)	(8,271)
Big Music Project	2,603	(2,572)	31
Capital fund - Gym equipment	1,409	(3,612)	(2,203)
Chess in Schools Project	15,381	(17,633)	(2,252)
Children in Need	30,000	(2,850)	27,150
Clothworkers Foundation	10,000	-	10,000
Gardening Project	405	(586)	(181)
Literacy Festival & World Book Day Fund	21,850	(23,111)	(1,261)
Merthyr Valley Homes	911	(227)	684
Sportslot	1,492	(444)	1,048
Vegetarian Society	150	-	150
WCVA - Active Inclusion	15,284	(18,349)	(3,065)
Welsh Assembly Government	117,250	(7,845)	109,405
Youth Camp	3,901	(1,175)	2,726
Eramus	1,618	(1,046)	572
Clybiau Plant Cymru	3,040	(369)	2,671
Coalfields Cafe	7,000	(1,464)	5,536
Voluntary Action Methyr Tydfi	1,600	(1,162)	438
Animal Grant	-	(1,182)	(1,182)
Best Foot Forward Project	-	(2,365)	(2,365)
Festival of Learning	-	(200)	(200)
Skiathos Fund	-	(2,470)	(2,470)
Starbucks UK Youth (Cafe Bar)	-	(842)	(842)
Stephens & George - Bursary	-	(4,443)	(4,443)
Stephens & George - Monmouth	-	(1,000)	(1,000)
	<u>240,182</u>	<u>(109,506)</u>	<u>130,676</u>
<b>TOTAL FUNDS</b>	<u>445,542</u>	<u>(338,312)</u>	<u>107,230</u>

**STEPHENS AND GEORGE CENTENARY CHARITABLE  
TRUST**

**NOTES TO THE FINANCIAL STATEMENTS - CONTINUED  
FOR THE YEAR ENDED 31 MARCH 2019**

**9. MOVEMENT IN FUNDS - continued**

**Purpose of Restricted Funds**

Animal Grant: Funding for engaging with Disadvantaged children through Animals as many young people may never have seen a sheep, a goat and Young people learn and develop through experiences

Baby Book Worm: Funding to be used to engage with parents and carers of pre-school children to give them a 'head start' in reading before attending school

Best Foot Forward Project: Funded by Ramblers Cymru, to enable to charity to help to create a healthier community who have a passion for walking

Big Music Project: Funded by Youth Cymru the project supports learning through Music. The project has worked alongside the Charities Spread the Word Festival creating a music Presence at the Festival on the parade, at venues and schools engaging people in all aspects of Music production

Bookshop: Monies to develop the Book shop which is the only Book shop in Merthyr Tydfil

Capital fund - Gym equipment: To fund the purchase of gym equipment to be used in the Community Centre

Chess in Schools Project: Funding received to enable the charity to co-ordinate chess in primary and secondary schools in Merthyr Tydfil, and also runs half term, Easter and Summer chess clubs

Children in Need: We are very privileged to be in receipt of Children In Need monies these monies are funding a play worker to develop our # no phones and computer ethos and also the Newsletter project and supporting young people to Feel better about themselves, make better choices and expand their life skills

Clothworkers Foundation: Monies towards the refurbishment of the Dowlais Community Centre

Clybiau Plant Cymru - Funding for afterschool resources and project extension

Coalfields Regeneration: Monies towards creating an energy efficient building by the installation of new lighting and heating

Community Chest - Football & Netball: To fund the purchase of new equipment and development of new inclusion physical activity sessions

Coalfields Cafe - To fund the staff costs at the community cafe

Creative Library: The fund the creation of community libraries, with eight being created to date, all with the aim to create a reading space to enthuse young people and raise literary standards.

Erasmus - To fund a European youth project for best practice in youth work

Festival of Learning: Monies for adult education workshops to promote lifelong learning

Gardening Project: The Trust has won a green Flag award and the monies are to enhance and develop the project

Literacy Festival & World Book Day Fund: As part of the Trust's aim to raise literacy standards an enthuse the community to embrace books, the Trust hosts the Spread the Word Festival, on World Books Day, this is an annual event.

Literacy Workshops: The trust is an Educational Charity and hosts workshops in the Community For young people to enthuse and develop their love of literature

**STEPHENS AND GEORGE CENTENARY CHARITABLE  
TRUST**

**NOTES TO THE FINANCIAL STATEMENTS - CONTINUED  
FOR THE YEAR ENDED 31 MARCH 2019**

**9. MOVEMENT IN FUNDS - continued**

Merthyr Valley Homes: A grant to develop the gardening project which has been awarded a green flag award and works with the most disadvantaged in the community

Newsletter Project: Initiated with an Arts Council of Wales Grant, which enabled the employment of a newsletter coordinator. The newsletter contains youth news, and is by young people for young people. The newsletter is published every 12 weeks

Rhondda Cynon Taff - Welsh Church Act: For the refurbishment of Dowlais Community Centre

Skiathos Fund: To assist with the development of workshops around complex issues

Sportslot: sports equipment for the gymnasium at the Dowlais Community Centre

Starbucks UK Youth (Café Bar): funding for Café furniture for the Café the trust is creating

Stephens & George - Bursary: To fund gifted young people to pursue their education. Bursaries have been awarded to young people in attendance at Monmouthshire School, Oxford and Cambridge Universities

Stephens & George - Library: ASDA funding for the creation of community libraries in Merthyr Tydfil to promote the charity's ethos to raise literacy standards

Stephens & George - Monmouth: To provide funds to cover school fees at Monmouth School for specific individuals

Summer Camp: for the development of the summer camps for trips and workshops for disadvantaged young people

Vegetarian Society: workshops to promote vegetarianism in the community

Voluntary Action Merthyr Tydfil - To fund a Health & Well Being awareness day

WCVA - Active Inclusion: to fund staff to work with 18 to 24 year olds to re-educate and retrain

Welsh Assembly Government: to refurbish the Dowlais Community Centre

Youth Camp - to fund the play work at the centre such as the after school and half term clubs. The ethos of the clubs is "No Phones, No Computers"

**Designated fund - HUB Project**

Relates to monies set aside for the potential purchase and subsequent renovations to a property. This property will be used as a hub for community projects.

**10. RELATED PARTY DISCLOSURES**

Donations of £45,569 (2018: £45,403) have been received from S & G Print Group Ltd, a company in which one of the Trustees' relatives is a Director.

Various donations in kind have also been received from S & G Print Group Ltd, including that of staff time and office accommodation. It is impossible to quantify the value of these donations, and they have not been included within the accounts.



**STEPHENS AND GEORGE CENTENARY CHARITABLE  
TRUST**

**NOTES TO THE FINANCIAL STATEMENTS - CONTINUED  
FOR THE YEAR ENDED 31 MARCH 2019**

**11. DONATIONS IN KIND**

As identified in the Trustees' report, the Trust has received many donations in kind, among which include the donation of staff resources, office accommodation, books, materials and various other commodities, without which the Trust could not have carried out its work.

These donations of resources are almost impossible to quantify, and as such, have not been included at a monetary value within the accounts.

**12. VOLUNTEER TIME**

The value of volunteer time is not quantified in terms of money, but the time contributed by volunteers is an invaluable resource.

The number of hours contributed by volunteers is estimated at:	2019	2018
	<u>3,500</u>	<u>3,500</u>

**STEPHENS AND GEORGE CENTENARY CHARITABLE  
TRUST**

**DETAILED STATEMENT OF FINANCIAL ACTIVITIES  
FOR THE YEAR ENDED 31 MARCH 2019**

	2019 £	2018 £
<b>INCOME AND ENDOWMENTS</b>		
<b>Donations and legacies</b>		
Grants	(18,356)	247,783
Admission fees and sundry sales	45,128	57,532
S&G Print Group Ltd	45,569	45,402
Sundry donations	20,636	1,848
	<u>92,977</u>	<u>352,565</u>
<b>Total incoming resources</b>	92,977	352,565
<b>EXPENDITURE</b>		
<b>Charitable activities</b>		
Wages	91,936	85,628
Social security	2,758	3,134
Pensions	866	710
Rates and water	2,829	2,646
Insurance	6,251	8,091
Light and heat	7,422	8,917
Telephone	1,105	1,335
Advertising	73	5
Sundries	3	-
Staff costs	3,354	1,346
Travel expenses	3,218	1,724
Bursaries and grants	-	1,000
Event costs	29,734	10,209
Classes	19,149	10,547
Sports	2,054	650
Property costs	6,964	1,520
IT costs	2,301	798
Deprecation of freehold property	7,845	-
Depreciation of fixtures & fittings	3,283	2,788
	<u>191,145</u>	<u>141,048</u>
<b>Support costs</b>		
<b>Finance</b>		
Bank charges	513	402
<b>Governance costs</b>		
Accountancy	1,500	1,440
Consultancy fees	1,769	495
	<u>3,269</u>	<u>1,935</u>
<b>Total resources expended</b>	194,927	143,385

This page does not form part of the statutory financial statements

**STEPHENS AND GEORGE CENTENARY CHARITABLE  
TRUST**

**DETAILED STATEMENT OF FINANCIAL ACTIVITIES  
FOR THE YEAR ENDED 31 MARCH 2019**

	2019 £	2018 £
<b>Net (expenditure)/income</b>	<b>(101,950)</b>	<b>209,180</b>