

**WATER FROM
THE ROCK**

Jeremiah 1: 9-10

Annual Report

1st April 2023 – 31st
March 2024



Annual Financial Report for WFTR

Compiled by Femi Oni (Founding CEO)

For The Board of Trustees of Water from the Rock (WFTR)

What is in this report?

- ✓ About WFTR & its organisational structure
- ✓ Budget Areas & Codes
- ✓ Faith-based financial Model
- ✓ Finances: Cash-in vs Cash-out
- ✓ Milestones
- ✓ Overview of Business plan for year ahead



ABOUT US

Resourcing the Body, Rebuilding the Gates

Jeremiah 1: 9-10

- A not-profit Christian organisation:
 - ✓ WFTR first conceived in 2003
 - ✓ Birthed in 2008
 - ✓ Established in 2015
 - ✓ CIO charity on 3rd Nov 2020

26/07/2024

ANNUAL REPORT FOR WFTR



WFTR Structure

- Primary purpose of the structure is to provide an atmosphere to seek vision (from God), make room for emerging leaders, and provide much needed resource for the Body of Christ integrously and as quickly as possible

Trustees Board

Ex-officios

Advisors

Operational Team

Executives

Team leaders

Primary Roles

- Trustees accountable to charity commission and ensure that the CEO leads & WFTR initiatives complies with the law
- CEO is accountable to the Trustees for how operations are running on the ground

Trustees Board

Ex-officios: carry executive authority, has £5K liability & has veto power

Advisors: provide expert advice and has voting power

Provide guidance & governance in line with charity law

Operational Team

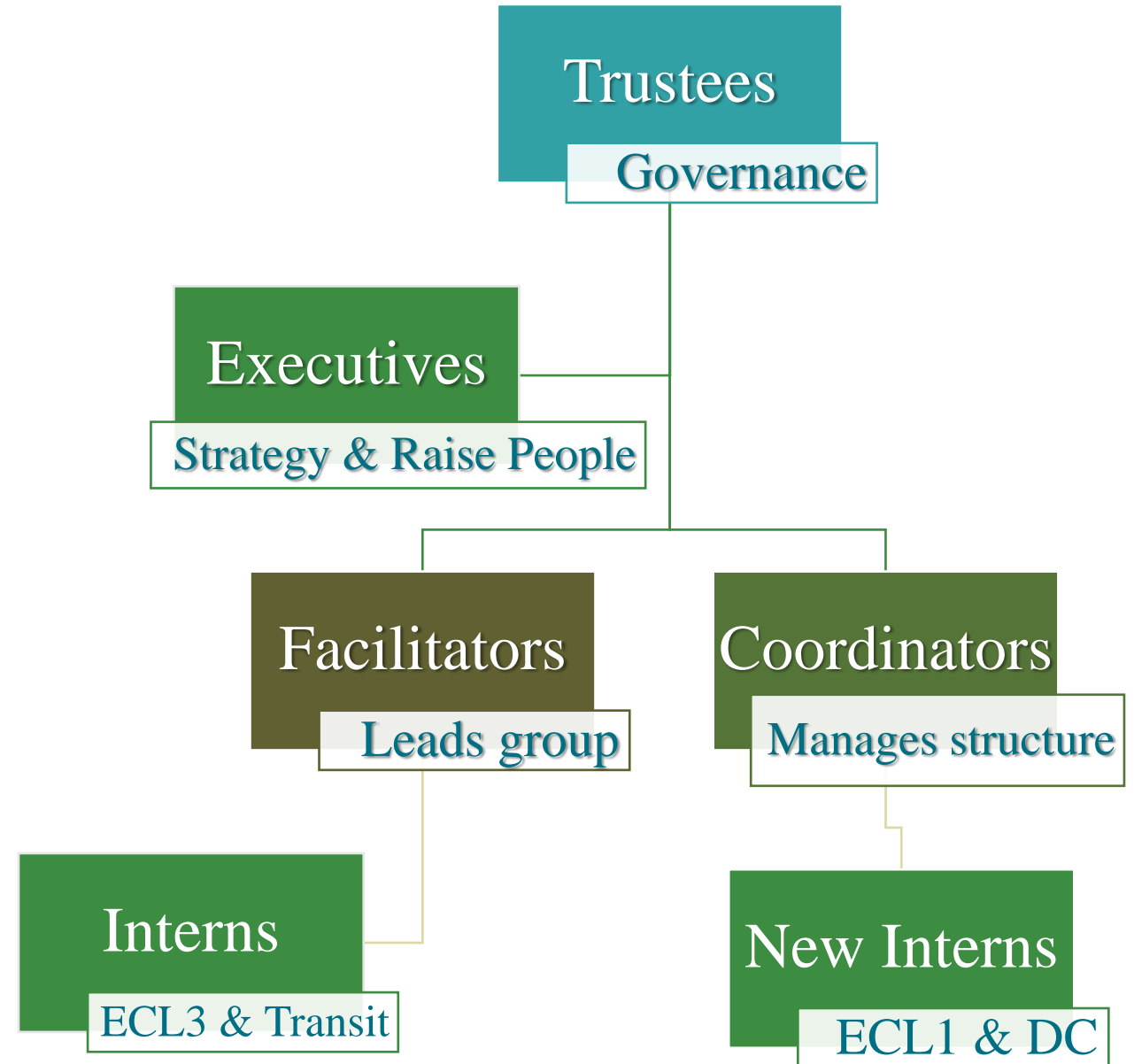
Executives: create strategy, spends budget & publish reports

Team leaders: Facilitate growth, coordinate initiatives

Turn vision into workable solution
Create admin structures

Relational context

- Trustees expect an annual report from the CEO of the previous year (by 1st June), as well as a business plan for the year ahead
- Executive directors create strategies that draw in resources to help bring meaningful changes to people's lives
- Facilitators are emerging leaders whilst coordinators steward tasks





The Faces Behind OUR GOVERNING TEAM

WFTR is governed by a Board of Trustees and run by an operational team headed by the founder & CEO



Femi Oni
Founder & CEO



Hannah James
Ex-official Trustee & DW Director



Priya Hodgins
Ex-officio Trustee and Executive for Policy Dev



Jon Skinner
Trustee and Executive for Digital Marketing



Maria Oni
Trustee and Executive for Pilgrims Tour



TBA (Nominated)
Trustee and Secretary for HR development



5 Budget Areas

CASH-IN & CASH-OUT

FOR THE PERIOD

1ST APRIL 2023 – 31ST MAR 2024



Section 1: Base Operations Report

People making it work on our operational base (fondly called The Rock House); Discipleship Interns



Section 2: Disciplers Workshop Report

Our flagship training program (incl. JD Rev; Managing Your World; Excel & ManUwell



Section 3: Pilgrim Tour Report

The Tour of Israel (every year) helping Christians to (re)connect with historical heritage



Section 4: Transit Report

Empower people to embrace change. Designed for emerging leaders, young couples & students



Section 5: Linking the Isolated Report

Connecting people to a Local church (Praise & Prayer Weekend; the Well). Sponsoring the Persecuted

OUR MANDATE: The boundaries of our work in terms of **who**; **where**; **how** and **what** makes us different

We run as a business, with Christian ethics. We make profit, but it is injected back into WFTR



People Groups we served: *Marginised*^{byFaith}; *Joshua Generation*; *Evangelical Community*

Our mandate also compels us to reach across denominational lines, and globally



BUSINESS MODEL for WFTR: As a Faith Based organisation



- ✓ *We depend on God to provide for us through the generosity of people*
- ✓ *We don't borrow for God's ideas. In line with our stewardship value, we: Classify our funds in 3 categories (see below) and RAISE a restricted emergency fund of £10,000 annually*

1

Budget Target

This is the total of what we are hoping to raise. It is the combination of what beneficiaries of services contribute, with what non-beneficiaries (partners) donate

This past year, our desire was for a budget target was for £110,000

26/07/2024

ANNUAL REPORT FOR WFTR

2

Actual Funds

This is what was in our account (excludes emergency funds)

Our actual funds this past year was £4,441.06 but with pledges, it rose to an estimated total £17,941.06

3

Faith Target

This is what we are believing God for. It was advertised to our partners in July 2023

Our faith target was a range of an additional £52,000-£72,000

Budget Codes: How they are developed and what they are

	Main Focus	Activities	Budget Codes
Base Operations	Offices; Resource centre	<i>Staff & Intern Residents; Exhibitions;</i>	RH Appeal/Invest DC Intern
Disciplers' Workshop	Training to equip people with life skills	<i>Managing Your World, Jesus Discipleship Rev; ManUwell and Excel</i>	DW/Excel Intern ManUwell JD Rev; MYW
Transit	Empowering people to change	<i>Destiny Encounter; W-Way Couples; Joshua; Jethro</i>	Transit DE
Pilgrim Tours	Pilgrimages	<i>Flights, Hotel, Tours</i>	Israel 2023-24
Linking Resources	Networking small groups to others	<i>Har Homa; The Well & sponsor of the persecuted</i>	Link: Link-IL

How we developed our Budget Codes



Base Operations

Offices and
Resource centre for
all our work



Disciplers Workshop

Our flagship
training initiatives
equipping ordinary
people to develop
life skills



Linking Resources

Connecting the
isolated with the
wider Body



Pilgrim Tours

Helping Christians
to (re)connect with
their historical
heritage



Transit

Helping people
and groups going
through
challenging
change



TOTAL CASH-IN & CASH-OUT

Cash-in is the total amount PAID into the WFTR a/c this past financial year

Cash-out is how much was spent for our operational costs as well as what we spent to provide a public service

What we had left at the end of the year

£4,441.06 (carried over from 2022-23)

£1,941.54 (bal. as of 1st April 2024)

£58,219.16

Amount Paid-in from:

- ✓ the Base Residents
- ✓ The WFTR Initiatives
- ✓ Known & Anonymous Donors

£60,718.68

Amount Paid-out to

Each Initiative

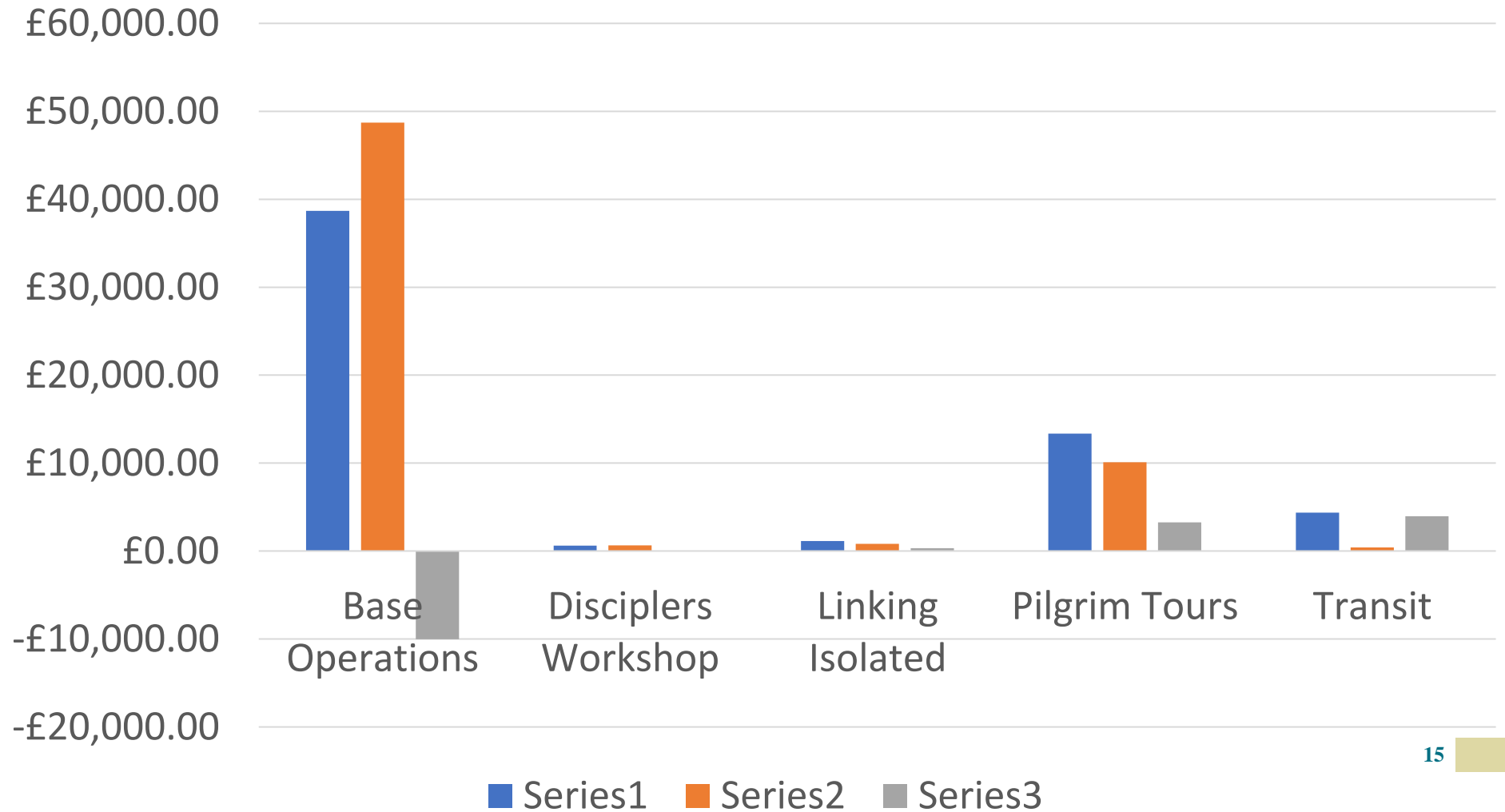
...More to follow in the next slide

Raw Budget Tracking for each Department

Category Area	Cash - IN	Cash - OUT	Shortfall or Surplus covered by donors
Base Operations	£38,693.18	£48,702.28	-£10,009.10
Disciplers' Workshop	£634.24	£708.84	-£74.60
Linking Resources	£1,141.02	£800.00	+£341.02
Pilgrim Tours	£13,369.44	£10,106.56	+£3,262.88
Transit	£4,381.28	£401.00	£3,980.28
TOTAL	£58,219.16	£60,718.68	-£2,499.52

The 5 Areas of the charity activities

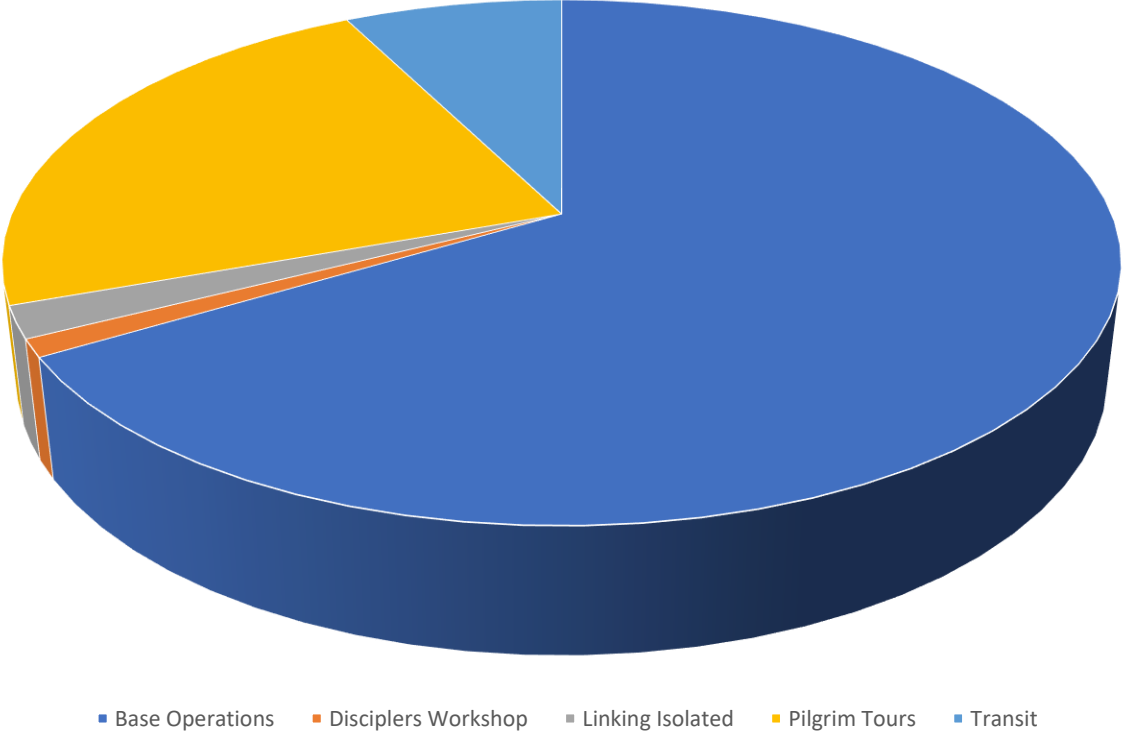
Cash-in vs Cash-out vs the Difference for Water from the Rock 2023-24



The donations that came IN each department 2023-24

Cash-in for each department

£38,693.18	Base Operations
£634.24	Disciplers Workshop
£1,141.02	Linking Isolated
£13,369.44	Pilgrim Tours
£4,381.28	Transit





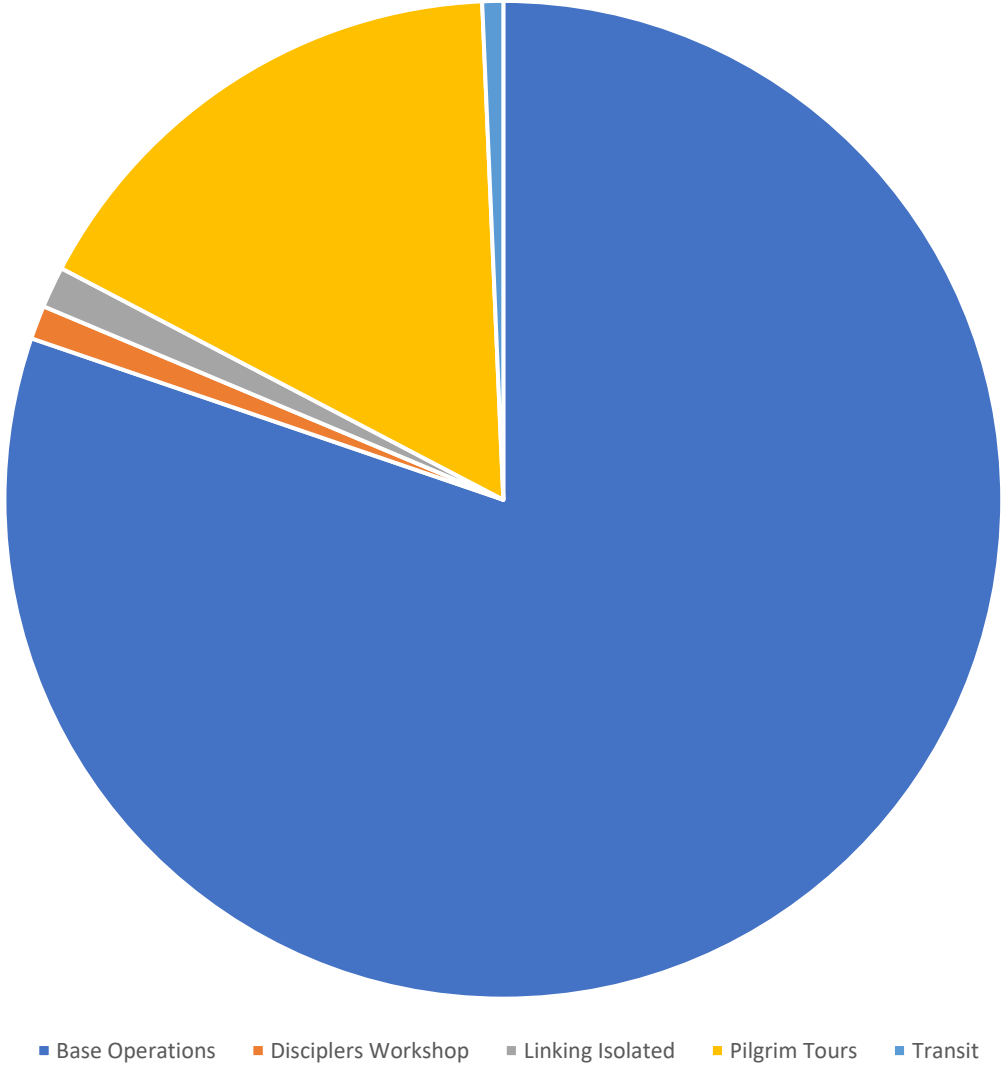
The donations that came **OUT** each department

Category Summary

Base Operations
Disciplers Workshop
Linking Isolated
Pilgrim Tours
Transit

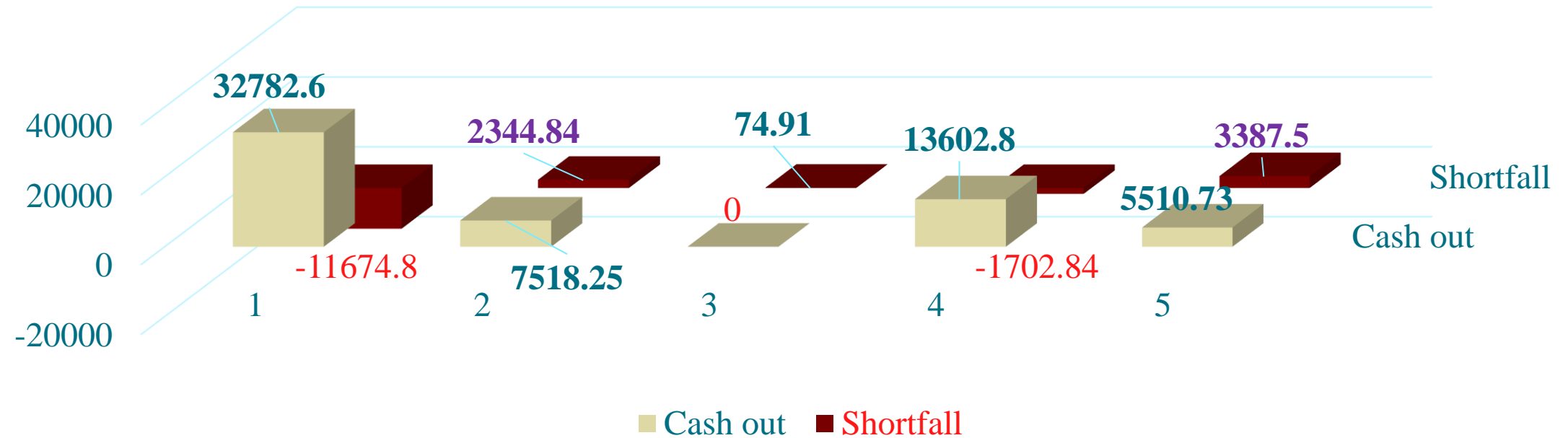
£60,718.68
£48,724.02
£663.30
£814.20
£10,106.16
£411.00

Cash-out (Spent) for each department



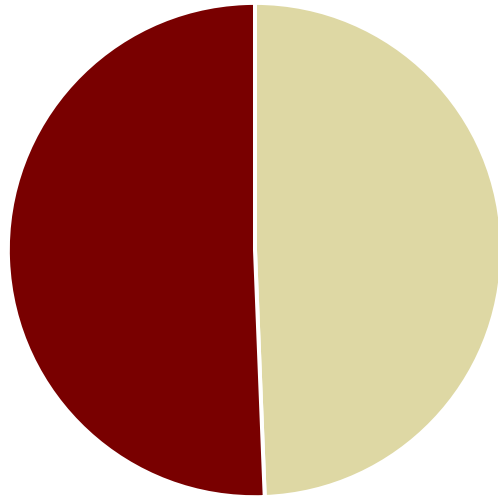
Cash was spent, and Shortfall amount that committed donors **fully** covered through the RH Appeal

Cash-OUT vs **Shortfall** for WFTR 2021-24
Figures in purple indicate surplus



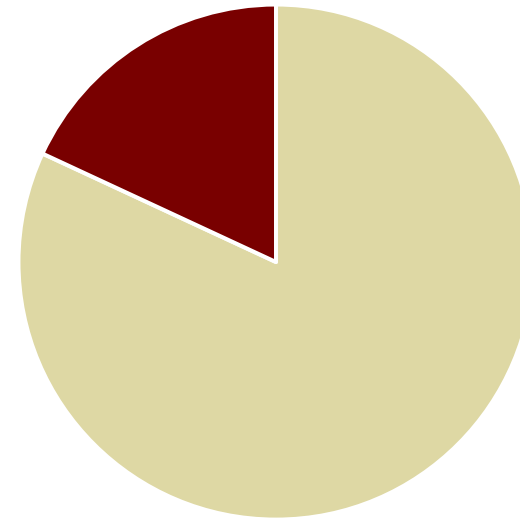
Sources of income for WFTR 2033-24

Charity activities vs Donations



■ Charity Activities ■ Donations ■ ■

UK vs Overseas



■ UK ■ Overseas ■ ■

Disclaimer: One of the overseas income was a hotel refund from our pilgrims tour in Sept2024. Therefore it is strictly not an income

ACHIEVEMENTS

While we cannot possibly quantify the full impact of our work on the lives of so many, the next two slides gives a little glimpse into how our work is touching many lives



Achievements (part 1 of 2)

Lives touched this past year



Base Life

Total 13 Interns

- ✓ 5 interns overcame mental illness
- ✓ 5 interns now in university
- ✓ 3 young people on career breakthrough



17 workshops

40 delegates from..

- ✓ 12 countries
- ✓ 10 denominations
- ✓ 84-90hrs 1-2-1 online support



Pilgrim Tour

8 Delegates

- ✓ From 5 churches
- ✓ 80% say best trip of their lives



Achievements (part 2 of 2)

Lives touched this past year



Transit

- ✓ 1 Village Church back on own feet
- ✓ 2 couples' relationship restored
- ✓ 7 young people find own direction via DE & the student platform (W-Way)



8 online workshops

5 interns

- ✓ 2 interns back in university, 2 free of addiction
- ✓ 17 new life skills
- ✓ 2 interns sponsored



ManUwell

5 Delegates

- ✓ 3 men Followed-up from previous
- ✓ All from 2022-23 say improved confidence intact

What people say after they have accessed a charity work of WFTR

Each area of charity activity in WFTR compiles a quarterly report based on actual information compiled from questionnaires of different events over the course of the year. Here are a group of snapshots of some of the results of some of those questionnaires

WATER FROM THE ROCK

"The "Managing Your World" online course was exactly what I needed at a crucial point in my life. Determined to work on myself while filled with guilt and childhood trauma, I found this course to be a lifeline. As a mum of three, learning to manage my own chaotic world was essential so I could positively influence my children's lives. The course offered invaluable insights and practical tools that have helped me become a better parent and helped me deal with parts of my childhood. Beyond the course itself, the support and value this community has poured into my life over the past few months have been truly transformative. Thank you for this on-going life-changing and enriching experience! "



Diana A

A wife, mother of three and a business owner who participated in the 6 weeks online workshop called Managing Your World (MYW)

WATER FROM THE ROCK

"Thanks so much for a great trip. So glad I could join the group. I wrote a few things that I think are important considerations for future trips but then had to remove as there's only a 400 character limit. Happy to provide further comments if you would welcome these. Overall the trip was great and I'm so thankful I could be part of it. Thank you Femi and Maria."

"I totally loved the team. Everybody so nice and wonderful. I was equally blessed by the place and by the people in the group."

"Nothing at all negative to say. The whole tour was fantastic from start to finish, would highly recommend to anyone thinking of going."

FO

*A delegate who was on our
2023 pilgrims' tour*



WATER FROM THE ROCK

Femi [*from Water from the Rock*] has helped Broadway United Reformed Church by Leading worship on three separate occasions. He is an impressive and spiritual preacher.



Judith G

Pulpit Supply Secretary

United Reformed village Church

(beneficiaries of the transit work of WFTR in village churches in the rural England)

Having reflected on a fruitful year, **we are Looking Ahead:** the next financial year

A summary of our plans for
the next 12months



GROWTH STRATEGY for 2024-25

What we hope to see the new season ahead

Time

12 months

- ✓ Continued renting of the Rock House
- ✓ Increase surplus
- ✓ Increase 3 – 12 months internships
- ✓ NEW initiatives in 2024

Money

Budgeting to new heights

- ✓ Faith target of **£85,500** (as outlined in our Business Plan)
- ✓ Actual funds already committed **£31,069** (as of 1st Apr 2025 from standing orders, charity activities contributions, etc.)

People

Growing people, Raising Leaders, Engaging churches & reaching out

- ✓ Appoint a new Trustee
- ✓ Help a new generation of leaders in stewarding their faith in an increasingly fragile world
- ✓ Develop Internships
Long-term emphasis on career & International Development

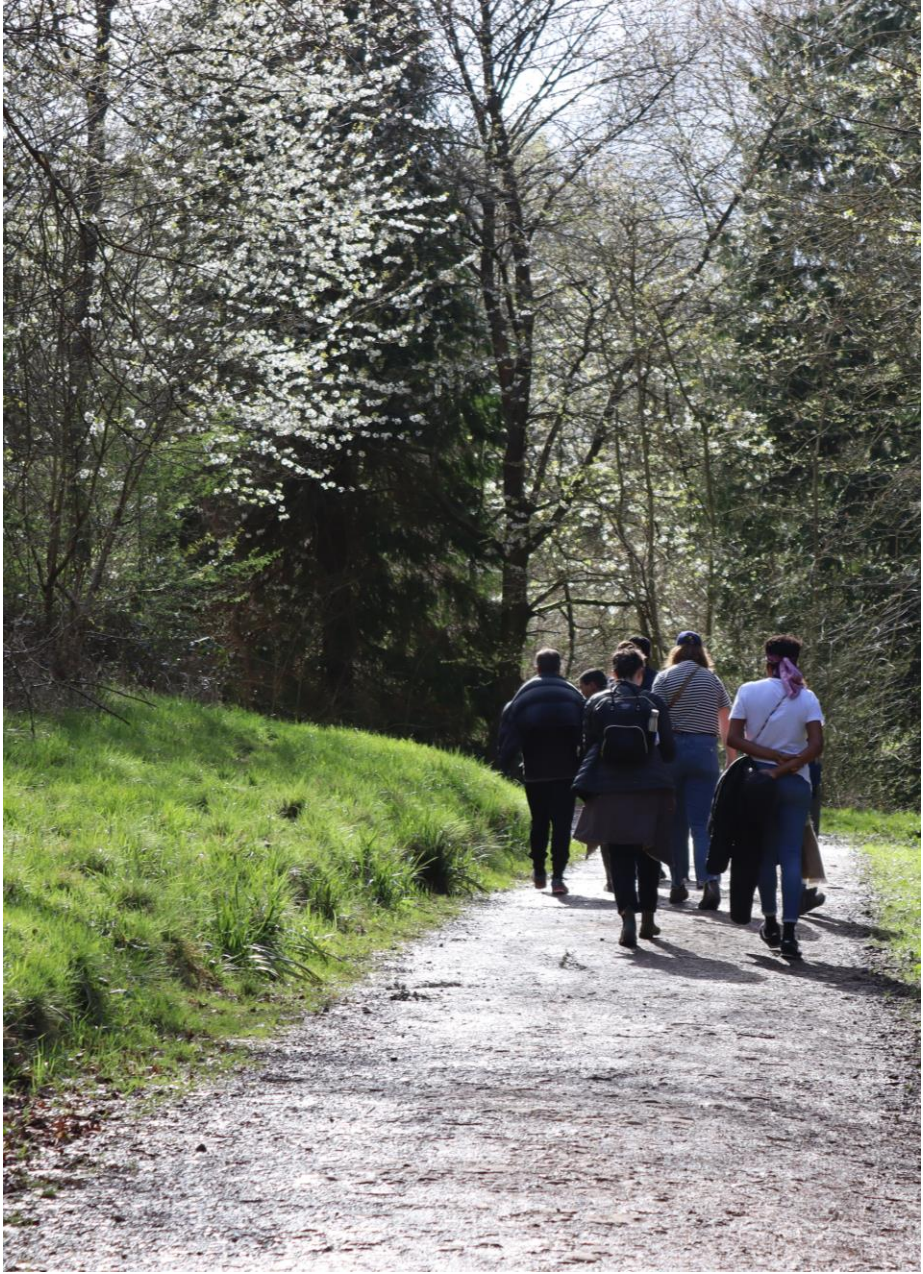


Thank you...
to the public who have allowed us to make a difference to their lives...and to our partners who have given so generously

What a Year it has been for us!

1. We operated at 100% of our capacity and did not allow the challenges of a stretch on our resources to reduce our commitment to our mandate, serving across 12 denominations, and attracting visitors from 12 nations
2. Our internships have directly helped interns to recover from very difficult life challenges, with many entering university for the first time and others embarking on satisfying & fulfilling lifelong careers or ministry
3. Enormous privilege for us to help people living in rural England, and providing spiritual support to parishes

Looking forward to an even more fruitful year ahead!



**WATER FROM
THE ROCK**

**THANK
YOU!**

To all our partners, as well as
our interns who have allowed
us to share their stories

Phone

+44 7904 164385

Email

info@wftherock.org

Website

www.wftherock.org

WFTR Accounts 1st April 2023 - 31st March 2024

Category Summary

Base Operations
Disciplers Workshop
Linking Isolated
Paid in
Pilgrim Tours
Transit

Donations/Paid out

xcheck

Date	Category	Chq no	Description
31-Mar-23	Opening Balance		
3-Apr-23	Base Operations		Healing waters offering for admin
3-Apr-23	Base Operations		RH APPEAL-O (from K.J. Riersmersma)
3-Apr-23	Linking Isolated		Stans vos
3-Apr-23	Base Operations		RH APPEAL-O (Christ Disc /AS)
6-Apr-23	Base Operations		Savage HM donation to Base life
11-Apr-23	Base Operations		Severn Trent Water
22-Apr-23	Base Operations		inpay as RFB Bill settlement
22-Apr-23	Disciplers Workshop		E piper MYW
23-Apr-23	Linking Isolated		international bank charges
25-Apr-23	Transit	404319	transit offering from gfc
25-Apr-23	Base Operations		HollyHseRent payment toHamptonEstates
25-Apr-23	Base Operations		BT Group PLC
28-Apr-23	Base Operations	DD	WARWICKSHIRE DC CTAX
2-May-23	Base Operations		Healing waters offering for admin
2-May-23	Base Operations		RH APPEAL-O (from K.J. Riersmersma)
2-May-23	Linking Isolated		Stans vos
2-May-23	Base Operations		RH APPEAL-O (Christ Disc /AS)
2-May-23	Base Operations		RH Appeal-O (from PH)
3-May-23	Base Operations		RH Appeal - O (from J.Ayeni)
9-May-23	Base Operations		Savage HM donation to Base life
9-May-23	Base Operations		RH Appeal - Natasha Beve
12-May-23	Transit		couples in transit from D.souter
16-May-23	Disciplers Workshop		thirtyoneeight (safeguarding training)
17-May-23	Base Operations	100183	Rh bill (to J.Beauchair) hollyhse electric
19-May-23	Base Operations		RH Appeal - Onis (from ranveig a)
19-May-23	Linking Isolated		international bank charges
22-May-23	Disciplers Workshop		JDRev workshop - conley m
23-May-23	Transit		bank charges
24-May-23	Base Operations		RH Appeal-O
25-May-23	Base Operations		HollyHseRent payment toHamptonEstates
29-May-23	Pilgrim Tours		pickup pilgrims instalment
30-May-23	Base Operations	DD	WARWICKSHIRE DC CTAX
31-May-23	Pilgrim Tours		ashforth pilgrims instalment
1-Jun-23	Base Operations		Healing waters offering for admin
1-Jun-23	Base Operations		RH APPEAL-O (from K.J. Riersmersma)
1-Jun-23	Base Operations		RH APPEAL-O (FROM CHRIST DISC T/AS)
1-Jun-23	Base Operations	100208	bt Group PLC x2months

3-Jun-23	Base Operations		402027	402027	402027	402027	michelle cristina
6-Jun-23	Base Operations						Savage HM donation to Base life
8-Jun-23	Pilgrim Tours						refund from ramat rechel
13-Jun-23	Transit						transit offering from gfc
22-Jun-23	Transit						couples in transit from D.souter
23-Jun-23	Transit						bank charges
26-Jun-23	Base Operations						HollyHseRent payment toHamptonEstates
26-Jun-23	Base Operations						RH Appeal - lala.z
26-Jun-23	Base Operations						RH Appeal (from oni a & m)
28-Jun-23	Base Operations		DD				WARWICKSHIRE DC CTAX
29-Jun-23	Transit		404319				transit offering from gfc
29-Jun-23	Pilgrim Tours						pickup pilgrims instalment
29-Jun-23	Pilgrim Tours						ashforth pilgrims instalment
30-Jun-23	Base Operations						RH Appeal - O (from PH)
3-Jul-23	Base Operations						Healing waters offering for admin
3-Jul-23	Base Operations						RH APPEAL-O (from K.J. Riersmersma)
3-Jul-23	Linking Isolated						S.Vos for Linking Resources
3-Jul-23	Base Operations						RH APPEAL-O (Christ Disc /AS)
6-Jul-23	Base Operations						bt group
6-Jul-23	Base Operations						Savage HM donation to Base life
6-Jul-23	Base Operations						inpay as RFB Bill settlement
11-Jul-23	Pilgrim Tours						j.skinner pilgrims instalments
14-Jul-23	Base Operations						RH Appeal (from oni a & m)
17-Jul-24	Pilgrim Tours						iris pilgrims instalment
17-Jul-23	Pilgrim Tours						international bank charges
21-Jul-23	Base Operations						rh appeal-o (from ranveig a)
21-Jul-23	Base Operations						international bank charges
21-Jul-23	Base Operations						rh appeal-o (from ranveig a)
21-Jul-23	Base Operations						international bank charges
23-Jul-23	Transit						total charges
24-Jul-23	Base Operations						rh appeal-o (from onis a & m)
25-Jul-23	Transit		402027				transit offering from gfc
25-Jul-23	Base Operations						HollyHseRent payment toHamptonEstates
26-Jul-23	Transit						transit-Aspire via Cornelieke for AnaC
27-Jul-23	Transit						transit-aspire from ktRead
28-Jul-23	Base Operations		DD				WARWICKSHIRE DC CTAX
28-Jul-23	Pilgrim Tours						pickup pilgrims instalment
1-Aug-23	Base Operations						Healing waters offering for admin
1-Aug-23	Pilgrim Tours						onis pilgrims instalment
1-Aug-23	Pilgrim Tours						onis pilgrims instalment
2-Aug-23	Linking Isolated						Stans vos
3-Aug-23	Pilgrim Tours						ashforth pilgrims instalment
7-Aug-23	Base Operations						BT GROUP PLC
7-Aug-23	Base Operations						Savage HM donation to Base life
7-Aug-23	Base Operations						RH Appeal-O (from PH)
8-Aug-33	Pilgrim Tours		100211				refund staff for BA flights for pilgrims
8-Aug-23	Transit						accomm for DE
23-Aug-23	Transit						total charges
24-Aug-23	Transit		403897				transit offering from gfc
24-Aug-23	Base Operations						rh appeal-o (from onis a & m)
24-Aug-23	Base Operations						RH Appeal-O (from PH)

25-Aug-23	Base Operations		HollyHseRent payment toHamptonEstates
25-Aug-23	Base Operations		RH Appeal - from Ari f
25-Aug-23	Base Operations		RH Appeal (for Ecl3 internPiper)
28-Aug-23	Pilgrim Tours		pickup pilgrims instalment
29-Aug-23	Base Operations	DD	WARWICKSHIRE DC CTAX
30-Aug-23	Base Operations		rh appeal-o (from River church)
31-Aug-23	Base Operations		RH Appeal-O (from PH)
1-Sep-23	Base Operations	100212	Reimbursed loan from Onis
1-Sep-23	Base Operations		Healing waters offering for admin
1-Sep-23	Base Operations		RH APPEAL-O (Christ Disc /AS)
4-Sep-23	Pilgrim Tours		ashforth pilgrims instalment
6-Sep-23	Base Operations		bt group plc
6-Sep-23	Base Operations		Savage HM donation to Base life
6-Sep-23	Pilgrim Tours		s.andea pilgrims instalments
7-Sep-23	Pilgrim Tours		pickup pilgrims instalment
8-Sep-23	Pilgrim Tours		j.skinner pilgrims instalments
11-Sep-23	Pilgrim Tours		oni-femi pilgrims instalment
11-Sep-23	Pilgrim Tours		goulding pilgrims instalment
12-Sep-23	Pilgrim Tours		hotel r.rachel for pilgrims tour
12-Sep-23	Pilgrim Tours		international bank charges for Pilgrims
12-Sep-23	Pilgrim Tours		hotel atlas for pilgrims tour
12-Sep-23	Pilgrim Tours		ashforth pilgrims instalment
12-Sep-23	Pilgrim Tours		s.andea pilgrims instalments
13-Sep-23	Pilgrim Tours		hsbc scs (charges for transfer)
18-Sep-23	Pilgrim Tours		oni-femi pilgrims instalment
23-Sep-23	Pilgrim Tours		total charges
25-Sep-23	Base Operations		HollyHseRent payment toHamptonEstates
28-Sep-23	Base Operations		WARWICKSHIRE DC CTAX
28-Sep-23	Base Operations		rh appeal-o (from River church)
2-Oct-23	Disciplers Workshop		thirtyoneeight (safeguarding training)
2-Oct-23	Base Operations		Healing waters offering for admin
2-Oct-23	Base Operations		RH APPEAL-O (Christ Disc /AS)
4-Oct-23	Pilgrim Tours		hotel atlas for pilgrims tour
4-Oct-23	Pilgrim Tours		international bank charges for Pilgrims
6-Oct-23	Pilgrim Tours	100213	Eurochange currency for pilgrims tour
6-Oct-23	Base Operations		Savage HM donation to Base life
9-Oct-23	Base Operations		BT Group plc
10-Oct-23	Base Operations		rh appeal-o (from skinner nz)
10-Oct-24	Base Operations		rh appeal-o (for p.oni for Ecl2)
10-Oct-23	Disciplers Workshop		DW-MYW for andrea w
10-Oct-23	Disciplers Workshop		dw-MYW for piper
10-Oct-23	Base Operations		inpay as RFB Bill settlement
17-Oct-23	Pilgrim Tours		refund I.Pickup for pilgrim hotel
22-Oct-23	Base Operations		rh appeal-beveridges
23-Oct-23	Pilgrim Tours		total charges
24-Oct-23	Linking Isolated		donations for displaced people IL
24-Oct-23	Base Operations		rh appeal-ECL2 donation for p.oni
24-Oct-23	Disciplers Workshop		dw-JDRev for praise o
25-Oct-23	Base Operations		HollyHseRent payment toHamptonEstates
30-Oct-23	Base Operations		WARWICKSHIRE DC CTAX
30-Oct-23	Base Operations		rh appeal-o (river church)

1-Nov-23	Base Operations		Healing waters offering for admin
1-Nov-23	Base Operations		RH APPEAL-O (FROM CHRIST DISC T/AS)
6-Nov-23	Base Operations	DD	BT Group plc
6-Nov-23	Base Operations		Savage HM donation to Base life
8-Nov-23	Linking Isolated		donation to IDP (Rosie R and others)
10-Nov-23	Pilgrim Tours		goulding pilgrims instalment
20-Nov-23	Base Operations		rh appeal-o (from ranveig a)
21-Nov-23	Disciplers Workshop	200001	offering for external assessor ECL-DW
22-Nov-23	Base Operations		RH Appeal (for Ecl3 internPiper)
23-Nov-23	Disciplers Workshop		total charges
23-Nov-23	Base Operations		HollyHse Electricityx10mnths (J.beauchair)
23-Nov-23	Base Operations		RH Appeal from S.williamson
23-Nov-23	Base Operations		RH appeal - O (from D adoyi)
24-Nov-23	Base Operations		RH appeal (from p.cranshaw)
26-Nov-23	Base Operations		RH Appeal (for Ecl3 internPiper)
26-Nov-23	Base Operations		rh appeal-o (from onis a & m)
27-Nov-23	Base Operations		HollyHseRent payment toHamptonEstates
28-Nov-23	Transit	402027	Transit Offering from gfc
28-Nov-23	Base Operations	DD	WARWICKSHIRE DC CTAX
28-Nov-23	Base Operations		rh appeal-o (river church)
28-Nov-23	Transit		donation for W-Way (from s.pistulka)
30-Nov-23	Transit		donation destiny encounter (k.jinadu/CAF)
1-Dec-23	Base Operations		Healing waters offering for admin
1-Dec-23	Base Operations		RH APPEAL-O (FROM CHRIST DISC T/AS)
4-Dec-23	Base Operations	DD	evangelical alliance membership fee
6-Dec-23	Base Operations		Savage HM donation to Base life
6-Dec-23	Linking Isolated		S.Vos for Linking Resources
7-Dec-23	Transit	401710	Transit Offering from gfc
7-Dec-23	Base Operations		BT Group plc
10-Dec-23	Base Operations		RH appeal (from Bevs)
12-Dec-23	Pilgrim Tours		goulding pilgrims instalment
19-Dec-23	Base Operations	DD	rh appeal-o (from River church)
19-Dec-23	Disciplers Workshop		speaker offering (to k.dean)
19-Dec-23	Base Operations		RH appeal (from Bevs)
21-Dec-23	Transit		delegate (w.buttrick) donate MCI-1 course
22-Dec-23	Base Operations	100214	fire extinguishers for RH room
23-Dec-23	Disciplers Workshop		total charges
26-Dec-23	Disciplers Workshop		myw delegate (s.pistulka) donate
26-Dec-23	Linking Isolated		donations for displaced people IL
27-Dec-23	Base Operations		HollyHseRent payment toHamptonEstates
28-Dec-23	Base Operations	DD	WARWICKSHIRE DC CTAX
28-Dec-23	Linking Isolated		Stans vos
29-Dec-23	Base Operations		RH APPEAL (from ACB)
29-Dec-23	Base Operations		RH APPEAL (from ACB)
2-Jan-24	Base Operations		Healing waters offering for admin
2-Jan-24	Base Operations		RH APPEAL-O (FROM CHRIST DISC T/AS)
3-Jan-24	Disciplers Workshop		DW - MYW for aldo (by hmj)
4-Jan-24	Base Operations		BT Group plc
8-Jan-24	Base Operations		Savage HM donation to Base life
9-Jan-24	Base Operations	100215	boiler juice (for hollyhse heating fuel)
10-Jan-24	Disciplers Workshop		dw - myw for d.anda

19-Jan-24	Disciplers Workshop		dw - myw for w.buttrick
20-Jan-24	Disciplers Workshop		speaker offering (to k.dean)
21-Jan-24	Base Operations		rh appeal-o (river church)
23-Jan-24	Transit	402027	Transit Offering from gfc
23-Jan-24	Base Operations		international bank charges
24-Jan-24	Base Operations		rh appeal-o (from onis a & m)
24-Jan-24	Base Operations		rh appeal-o (from onis a & m)
25-Jan-24	Base Operations		HollyHseRent payment toHamptonEstates
25-Jan-24	Base Operations		RH APPEAL (from ACB)
26-Jan-24	Transit		Transit Offering from ranveig a for MCI
26-Jan-24	Transit		international bank charges
29-Jan-24	Base Operations		WARWICKSHIRE DC CTAX
29-Jan-24	Base Operations	DD	Savage HM donation to Base life
29-Jan-24	Disciplers Workshop		dw - myw for IrisB
1-Feb-24	Base Operations		Healing waters offering for admin
1-Feb-24	Base Operations		RH APPEAL-O (Christ Disc /AS)
6-Feb-24	Base Operations		BT Group plc
6-Feb-24	Base Operations		Savage HM donation to Base life
7-Feb-24	Linking Isolated		donations for displaced people IL
12-Feb-24	Base Operations		RH appeal (from Bevs)
16-Feb-24	Disciplers Workshop		speaker offering (to k.dean)
23-Feb-24	Disciplers Workshop		international bank charges
25-Feb-24	Base Operations		rh appeal-o (from onis a & m)
25-Feb-24	Base Operations		rh appeal-o (from onis a & m)
26-Feb-24	Base Operations		HollyHseRent payment toHamptonEstates
27-Feb-25	Base Operations		rh appear-o (rivers church)
28-Feb-24	Base Operations		rh appeal-o (from onis a & m)
1-Mar-24	Base Operations		Healing waters offering for admin
2-Mar-24	Base Operations		rh appeal (from k.j riemersma)
1-Mar-24	Base Operations		rh appear-o (christ disc t/as)
2-Mar-24			Balanced
6-Mar-24	Base Operations		Savage HM donation to Base life
8-Mar-24	Base Operations		BT Group plc
11-Mar-24	Linking Isolated		S.Vos for Linking Resources
14-Mar-24	Transit		delegate (w.buttrick) donate MCI-1 course
14-Mar-24	Transit		delegate (w.buttrick) donate MCI-1 course
15-Mar-24	Base Operations	100216	boiler juice (for hollyhse heating fuel)
19-Mar-24	Transit	402027	transit donations from gfc
19-Mar-24	Transit		mci course donation (irisB)
19-Mar-24	Transit		international bank charges
20-Mar-24	Base Operations		RH APPEAL (from ACB)
21-Mar-24	Disciplers Workshop		speaker offering (to k.dean)
23-Mar-24	Base Operations		total charges
25-Mar-24	Base Operations		HollyHseRent payment toHamptonEstates
25-Mar-24	Base Operations		rh appeal for p.oni for ecl2
25-Mar-24	Base Operations		delegate (w.buttrick) donate MCI-1 course
26-Mar-24	Base Operations		rh appeal (from ACB)
27-Mar-24	Base Operations		rh appeal-o (river church)
	Closing Balance		

£58,219.16	£60,718.68	-£2,499.52	Bank Balance
£38,693.18	£48,724.02	-£10,030.84	£1,941.54
£634.24	£663.30	-£29.06	
£1,141.02	£814.20	£326.82	
£0.00	£0.00	£0.00	
£13,369.44	£10,106.16	£3,263.28	
£4,381.28	£411.00	£3,970.28	
£58,219.16	£60,718.68	-£2,499.52	
£0.00	£0.00	£0.00	

Paid in	Paid out	Balance	Notes
		£4,441.06	balanced with bank statement #223
£10.00		£4,451.06	
£43.03		£4,494.09	
£34.34		£4,528.43	
£100.00		£4,628.43	
£110.00		£4,738.43	
	£925.57	£3,812.86	
£76.00		£3,888.86	
£76.00		£3,964.86	
	£8.20	£3,956.66	
£400.00		£4,356.66	
	£3,250.00	£1,106.66	
	£28.37	£1,078.29	
	£304.57	£773.72	
£10.00		£783.72	
£43.03		£826.75	
£34.46		£861.21	
£100.00		£961.21	
£500.00		£1,461.21	balance with bank statement 224
£105.00		£1,566.21	
£110.00		£1,676.21	
£500.00		£2,176.21	
£50.00		£2,226.21	
	£145.00	£2,081.21	
	£286.00	£1,795.21	
£192.00		£1,987.21	
	£6.00	£1,981.21	
£90.00		£2,071.21	
	£5.80	£2,065.41	
£1,500.00		£3,565.41	
	£3,250.00	£315.41	
£485.00		£800.41	
	£304.00	£496.41	
£485.00		£981.41	balanced with bank statement # 226
£10.00		£991.41	
£42.01		£1,033.42	
£100.00		£1,133.42	
	£142.28	£991.14	

£155.01		£1,146.15	
£110.00		£1,256.15	
£73.16		£1,329.31	
£200.00		£1,529.31	
£125.00		£1,654.31	
	£5.40	£1,648.91	
	£3,250.00	-£1,601.09	
£2,000.00		£398.91	
£120.00		£518.91	
	£304.00	£214.91	
£250.00		£464.91	
£485.00		£949.91	
£485.00		£1,434.91	
£500.00		£1,934.91	balanced with bank statement # 227
£10.00		£1,944.91	
£42.00		£1,986.91	
£33.64		£2,020.55	
£100.00		£2,120.55	
	£31.14	£2,089.41	
£110.00		£2,199.41	
£250.00		£2,449.41	
£2,150.00		£4,599.41	
£70.00		£4,669.41	
£480.00		£5,149.41	
	£6.00	£5,143.41	
£144.67		£5,288.08	
	£6.00	£5,282.08	
£106.87		£5,388.95	
	£6.00	£5,382.95	
	£7.00	£5,375.95	
£55.00		£5,430.95	
£200.00		£5,630.95	
	£3,250.00	£2,380.95	
£156.00		£2,536.95	
£160.00		£2,696.95	
	£304.00	£2,392.95	
£485.00		£2,877.95	Balanced with bank statement # 230
£10.00		£2,887.95	
£400.00		£3,287.95	
£600.00		£3,887.95	
£33.67		£3,921.62	
£485.00		£4,406.62	
	£31.14	£4,375.48	
£160.00		£4,535.48	
£500.00		£5,035.48	
	£3,654.10	£1,381.38	
	£375.00	£1,006.38	
	£5.80	£1,000.58	
£200.00		£1,200.58	
£1,000.00		£2,200.58	
£500.00		£2,700.58	

	£3,250.00	-£549.42	
£1,000.00		£450.58	
£3,000.00		£3,450.58	
£485.00		£3,935.58	
	£304.00	£3,631.58	
£800.00		£4,431.58	
£500.00		£4,931.58	balanced with bank statement # 232
	£1,800.00	£3,131.58	
£10.00		£3,141.58	
£100.00		£3,241.58	
£485.00		£3,726.58	
	£31.14	£3,695.44	
£160.00		£3,855.44	
£500.00		£4,355.44	
£300.00		£4,655.44	
£150.00		£4,805.44	
£1,000.00		£5,805.44	
£1,000.00		£6,805.44	
	£2,830.32	£3,975.12	
	£30.00	£3,945.12	
	£2,117.13	£1,827.99	
£300.00		£2,127.99	
£225.00		£2,352.99	
	£16.41	£2,336.58	
£1,150.00		£3,486.58	
	£6.60	£3,479.98	
	£3,250.00	£229.98	
	£304.00	-£74.02	
£800.00		£725.98	balanced with bank statement # 235
	£60.50	£665.48	
£10.00		£675.48	
£100.00		£775.48	
£411.28		£1,186.76	
	£6.00	£1,180.76	
	£604.03	£576.73	
£160.00		£736.73	
	£31.14	£705.59	
£670.00		£1,375.59	
£1,000.00		£2,375.59	
£76.00		£2,451.59	
£52.50		£2,504.09	
£225.00		£2,729.09	
	£830.57	£1,898.52	
£300.00		£2,198.52	
	£5.00	£2,193.52	
£770.00		£2,963.52	
£300.00		£3,263.52	
£30.00		£3,293.52	
	£3,250.00	£43.52	
	£304.00	-£260.48	
£800.00		£539.52	balanced with bank statement #237

£10.00		£549.52	
£100.00		£649.52	
	£31.14	£618.38	
£160.00		£778.38	
	£700.00	£78.38	
£400.00		£478.38	
£19.68		£498.06	
	£40.00	£458.06	
£1,000.00		£1,458.06	
	£5.40	£1,452.66	
	£1,430.00	£22.66	
£100.00		£122.66	
£200.00		£322.66	
£500.00		£822.66	
£2,000.00		£2,822.66	
£650.00		£3,472.66	
	£3,250.00	£222.66	
£400.00		£622.66	
	£304.00	£318.66	
£800.00		£1,118.66	
£42.55		£1,161.21	
£100.00		£1,261.21	balanced with bank statement #239
£10.00		£1,271.21	
£100.00		£1,371.21	
	£85.00	£1,286.21	
£160.00		£1,446.21	
£33.50		£1,479.71	
£200.00		£1,679.71	
	£31.14	£1,648.57	
£500.00		£2,148.57	
£350.00		£2,498.57	
£800.00		£3,298.57	
	£100.00	£3,198.57	
£500.00		£3,698.57	
£40.00		£3,738.57	
	£51.34	£3,687.23	
	£6.20	£3,681.03	
£76.04		£3,757.07	
£100.00		£3,857.07	
	£3,250.00	£607.07	
	£304.00	£303.07	
£68.08		£371.15	
£35.72		£406.87	
£1,116.65		£1,523.52	balanced with bank statement #241
£10.00		£1,533.52	
£100.00		£1,633.52	
£76.00		£1,709.52	
	£31.14	£1,678.38	
£160.00		£1,838.38	
	£904.28	£934.10	
£76.00		£1,010.10	

£40.00		£1,050.10	
	£100.00	£950.10	
£800.00		£1,750.10	
£200.00		£1,950.10	
	£6.20	£1,943.90	
£300.00		£2,243.90	
£280.00		£2,523.90	
	£3,250.00	-£726.10	
£847.45		£121.35	
£151.73		£273.08	
	£6.00	£267.08	
	£304.00	-£36.92	
£100.00		£63.08	
£41.70		£104.78	balanced with bank statement #243
£10.00		£114.78	
£100.00		£214.78	
	£31.14	£183.64	
£160.00		£343.64	
	£100.00	£243.64	
£200.00		£443.64	
	£100.00	£343.64	
	£6.20	£337.44	
£2,000.00		£2,337.44	
£1,000.00		£3,337.44	
	£3,250.00	£87.44	
£800.00		£887.44	
£50.00		£937.44	balanced with bank statement #244
£10.00		£947.44	
£41.87		£989.31	
£100.00		£1,089.31	
		£1,089.31	
£160.00		£1,249.31	
	£31.14	£1,218.17	
£33.33		£1,251.50	
£100.00		£1,351.50	
£400.00		£1,751.50	
	£727.15	£1,024.35	
£300.00		£1,324.35	
£706.00		£2,030.35	
	£6.00	£2,024.35	
£555.40		£2,579.75	
	£100.00	£2,479.75	
	£5.00	£2,474.75	
	£3,250.00	-£775.25	
£158.00		-£617.25	
£650.00		£32.75	
£1,108.79		£1,141.54	
£800.00		£1,941.54	balanced with bank statement #247
		£1,941.54	balanced with bank statement #247

WATER FROM THE ROCK (charity No. 1192140)

for the year ended 31st March 2024

Statement of financial activities

Income and Expenditure

	Restricted £	Unrestricted £	Total £
Income			
<i>Base Operations</i>	38,693		38,693
<i>Disciplers Workshop</i>	634		634
<i>Transit</i>	4,381		4,381
<i>Pilgrim Tours</i>	13,369		13,369
<i>Linking Isolated</i>	1,141		1,141
Total receipts	58,219	-	58,219
Expenditure			
<i>Base Operations</i>	48,724		48,724
<i>Disciplers Workshop</i>	663		663
<i>Transit</i>	411		411
<i>Pilgrim Tours</i>	10,106		10,106
<i>Linking Isolated</i>	814		814
Total Payments	60,719	-	60,719
Net Movement In Funds	- 2,500	- -	2,500

Statement of assets and liabilities

As at 31st March 2024

	£
Assets	
<i>Cash at bank</i>	1,942
Total assets	1,942
Liabilities	0
Net Assets	1,942
Funds of the Charity	
<i>Restricted funds</i>	1,942
<i>Unrestricted funds</i>	-
Total Charity Funds	1,942



Report to the trustees/
members of

WATER FROM THE ROCK

On accounts for the year
ended

1st Apr 2023 – 31st Mar 2024

Charity no
(if any)

1192140

Set out on pages

(remember to include the page numbers of additional sheets)

I report to the trustees on my examination of the accounts of the above charity ("the Trust") for the year ended **31st Mar 2024**.

**Responsibilities and
basis of report**

As the charity trustees of the Trust, you are responsible for the preparation of the accounts in accordance with the requirements of the Charities Act 2011 ("the Act").

I report in respect of my examination of the Trust's accounts carried out under section 145 of the 2011 Act and in carrying out my examination, I have followed the applicable Directions given by the Charity Commission under section 145(5)(b) of the Act.

**Independent
examiner's statement**

I have completed my examination. I confirm that no material matters have come to my attention (other than that disclosed below *) in connection with the examination which gives me cause to believe that in, any material respect:

- accounting records were not kept in accordance with section 130 of the Act or
- the accounts do not accord with the accounting records

I have no concerns and have come across no other matters in connection with the examination to which attention should be drawn in order to enable a proper understanding of the accounts to be reached.

** Please delete the words in the brackets if they do not apply.*

Signed:

JSmcCurry

Date:

21-05-2024

Name:

DOREEN JENNIFER MCCURRY

Relevant professional
qualification(s) or body
(if any):

Address:

*48 TINTO AVENUE
KILMARNOCK
Ayrshire KA1 3SE*

Only complete if the examiner needs to highlight matters of concern (see CC32, Independent examination of charity accounts: directions and guidance for examiners).

Give here brief details of any items that the examiner wishes to disclose.

