

**REGISTERED COMPANY NUMBER: 05546205 (England and Wales)**  
**REGISTERED CHARITY NUMBER: 1111950**

**Report of the Trustees and  
Financial Statements for the Year Ended 31 July 2024  
for  
Christ Church London**

**Contents of the Financial Statements  
for the Year Ended 31 July 2024**

	<b>Page</b>
<b>SENIOR LEADER'S OVERVIEW</b>	1
<b>Report of the Trustees</b>	2 to 13
<b>Report of the Independent Auditors</b>	14 to 17
<b>Statement of Financial Activities</b>	18
<b>Balance Sheet</b>	19
<b>Cash Flow Statement</b>	20
<b>Notes to the Cash Flow Statement</b>	21
<b>Notes to the Financial Statements</b>	22 to 29

## **Christ Church London**

### **SENIOR LEADERS' OVERVIEW for the Year Ended 31 July 2024**

During the last year we have been preparing for a significant transition of the senior leadership from David Stroud to Andy Tilsley and Joel Wade. The transition was formally recognised at our annual summer retreat in August 2024, but had been operating for several months before this. We formed a Transition Team to ensure the process was as smooth and healthy as possible, and the team comprised Andy Tilsley, Joel Wade, David Stroud, Lars Due-Christensen and Sarah Cobbold. This team stopped meeting at the end of May when David began a sabbatical from June to August.

Joel and Andy established an interim leadership team while we were working through this process, composed of our service leaders and other ministry leaders: Helen Marasha, Adnan Khan, Vivian Lam, Joy Tilsley, Catherine Ishola, Louisa Richards, Sarah Cobbold and Natalie Powell. This team has worked really well and will become the new leadership team of the church.

Every part of the transition has progressed extremely smoothly and has been very warmly received by the church. Everyone involved is to be commended for the spirit in which this change has taken place and the church is in excellent health as it heads into a new and exciting chapter.

As part of this change, we have seen a number of movements amongst our personnel. Joel Wade has taken on leadership of the Central Service, with Adnan and Jessica Khan taking on leadership of our service in Mile End (Jess is not a member of staff). Joy Tilsley also came on staff and will continue to lead our Sutton service alongside Andy, providing some much needed capacity for Andy to lead more widely alongside Joel. At the end of David's sabbatical, he will be moving to a part-time role at Christ Church as the Founding Pastor. The last year also saw Lars Due-Christensen bring to an end 8 years of outstanding work for Christ Church London. Lars and his wife Mette have returned to Denmark, where they will continue to pioneer the STEPS ministry which developed so successfully during their time in London.

Amidst this significant change, the Central and Sutton services have moved to new venues. Our Central Service is now meeting at Mary Ward House, near Russell Square Station, very close to some of London's universities and with ample space for growth. Our Sutton service is moving to a High School in central Sutton with a capacity for 600 adults across the English and Cantonese speaking services. In March 2024, our Mile End Service also took the step to merge the evening service into the morning service, due to more and more people gravitating from the evening service. This has been a positive step, and provided opportunity to use our Coborn Street venue for various other ministry opportunities on Sundays including courses, social events, serenity services as well as hosting a Farsi-speaking Iranian service on Sunday afternoons, who want to explore a possible partnership with the church. We were also approached by a Cantonese speaking community about the possibility of starting a new Cantonese service in Central London, and they will begin to meet weekly from August as we explore that opportunity. Christ Church London now has six services on four sites across the capital.

We also took the church through a significant series on the subject of sex, sexuality, marriage and singleness through the Autumn of 2023. There were 12 sessions over 3 months, and guest speakers included Carl Trueman, David Bennett and Damilola Makinde. The series was received extremely well, and we received positive feedback from people with differing views and experiences in this area of life.

The last 12 months have also seen very significant developments for both STEPS and the Everything Network. STEPS was launched as its own charity in the Autumn of 2023 and the Everything Network became its own charity in the summer of 2024. Christ Church remains committed to supporting both of these ministries, both by running courses, sharing news, and financial donations, but we are also excited by the new opportunities this will afford for both new charities.

We are also very thankful for the annual Gift Day which raised £195,000 including Gift Aid and future pledges, surpassing our target of £150,000. We are, yet again, enormously grateful to both God and the church for their amazing generosity. There is so much more we could say, but we want to pay credit to the hard work of the staff team, who have navigated all these changes with grace, faith and a generous spirit, as well as the hundreds of people across the church who give so much time, energy and money to make all of this possible. We are inspired by their love for God and His church, and full of anticipation for the new chapter together.

ANDY TILSLEY & JOEL WADE

## **Christ Church London**

### **Report of the Trustees for the Year Ended 31 July 2024**

The trustees who are also directors of the charity for the purposes of the Companies Act 2006, present their report with the financial statements of the charity for the year ended 31 July 2024. The trustees have adopted the provisions of Accounting and Reporting by Charities: Statement of Recommended Practice applicable to charities preparing their accounts in accordance with the Financial Reporting Standard applicable in the UK and Republic of Ireland (FRS 102) (effective 1 January 2019).

#### **OBJECTIVES AND ACTIVITIES**

##### **PRINCIPAL ACTIVITIES AND STRATEGY**

The main objectives of Christ Church London are to advance the Christian faith and to provide assistance for persons in conditions of need, hardship, or distress.

As an outworking of these objectives, Christ Church London seeks to be a community in London that serves the capital and beyond. As a church we want to engage with people's questions and create an environment where anyone can explore matters of faith. We believe that God is interested in everything, so we want to help everyone discover how they can use their unique skills and passions to contribute to the strengthening of society, build community, and serve those who are in need. We want to be a church that is empowered by the Holy Spirit to live effective lives and sense God's direction in all we do.

The church's strategy for accomplishing these goals, and fulfilling its charitable objectives, focuses on the activities undertaken through its various ministry areas, taking into account the following guiding principles:

- Christ Church London functions on a 'gathered' and 'scattered' basis. We 'gather' on a Sunday in multiple locations to be inspired and equipped to live out the Christian faith. We then 'scatter' throughout the city during the week to serve our local communities and the people whom we live amongst.
- Christ Church London exists to provide community. The best place to grow and learn is with others, which is why we are a community that stretches across the city.
- The church works for the social and cultural renewal of the city. The church should help the city be a better place to live, and as a result, we support people and projects that make living here better for everyone and particularly for those who are less financially secure than others.
- The church works for the spiritual renewal of this city by helping those who are seeking faith to connect with Jesus Christ. Sunday services provide a context of engaging worship that helps people to connect with God. This is supported by regular teaching from the Bible, which helps people learn to live well.
- Christ Church London contributes globally as well as locally. We want to share our experience with others just as we learn from them. We do this by equipping people to use their gifts and abilities to start new churches, working with established ones, and giving financially wherever there is need and opportunity. In keeping with this we support two global charities: International Justice Mission and Compassion.

## Christ Church London

### Report of the Trustees for the Year Ended 31 July 2024

#### GOVERNANCE, TRUSTEES, AND STAFF

The current trustees set out below held office during the year ended 31 July 2024:

David Akinluyi	David is group COO of LSL Property Services and a director of his own company, covering business, technology, and financial service engagements.
Hannah Cockburn	Hannah is a chartered accountant, having trained with the National Audit Office and currently works as a civil servant at the Department for Education.
Chee Yeen Fung	Chee Yeen is a North London GP with educational and advisory roles at Imperial College School of Medicine, Health Education England, the General Medical Council, and the Medical Schools Council.
Mark Goodchild	Mark is a management consultant who works with purpose-driven businesses and in the healthcare sector.
Samuel Kay	Sam is a partner with a London law firm, where he works in the financial services sector advising investment funds and asset managers.
Smart Kemiki	Smart is the Managing Director of a real estate company that facilitates buying, selling, portfolio development, land acquisition and property management. He is also actively involved with other charities. Smart stepped down as a trustee in August 2023.
Emily Ribeiro	Emily is a civil servant at the Foreign, Commonwealth and Development Office. Her roles have included policy advice and programme management on the Middle East, South Asia, and Africa. She was awarded an MBE for public service in 2011.
David Stroud	David is the Senior Leader of Christ Church London. He has been involved in leading churches for over 30 years, and Christ Church London is his third church plant.
Michael Thomas	Mike is a management consultant who specialises in turning businesses around and managing major projects. He has worked in a diverse range of industries for over 40 years and is actively involved with other charities.

The trustees are also the officers of the company. The power of appointment or removal of trustees rests with the trustees. New trustees are selected from the church community. They are well known to the existing Board of Trustees and have demonstrated a high level of dedication and commitment towards the aims of the church. After their appointment, new trustees receive an induction pack, and spend time with the existing trustees to ensure they fully understand their responsibilities and the legal and financial framework in which the church operates. They are provided with additional training as required.

The trustees, who meet at least four times a year, retain responsibility for the overall strategic decisions of the charitable company, as well as the setting and monitoring of budgets. The Leadership Team, the staff, and volunteers overseeing different areas of the church make day-to-day decisions on expenditure and activities.

At the start of this reporting period, the leadership of Christ Church London was provided by a Senior Leadership Team made up of David Stroud, Andy Tilsley, Joel Wade and Lars Due-Christensen, supported by Sarah Cobbold.

Over the past 12 months, the role of senior leader has been passed from David Stroud to Andy Tilsley and Joel Wade, who hold joint responsibility for the overall spiritual leadership and pastoral care of the church, maintaining the historic orthodox understanding of the Christian faith, and setting out the vision and mission. They are supported by a Leadership Team made up of Adnan Khan, Catherine Ishola, Helen Marasha, Joy Tilsley, Louisa Richards, Natalie Powell, Sarah Cobbold and Vivian Lam.

## Christ Church London

### Report of the Trustees for the Year Ended 31 July 2024

This new Leadership Team replaces the previous Senior Leadership Team and Service Leadership Team and takes a strategic view of the direction of the church, its broad initiatives as well as local implementation and safeguards the church's core values of Presence, Formation and Mission across the various ministries, services, and operations of the church to ensure we are working toward the cultural, social, and spiritual renewal of the city. These values were introduced by Joel and Andy to the team in the Spring of 2024, to be communicated to the church during the Autumn term.

Staff Members who have served on these teams this year are:

David Stroud	As well as leading the Senior Leadership Team, David has overseen the development of the overall vision and strategy of the church. David led the Central service up until Easter 2024 and continues to support Andy and Joel in their new roles as co-Senior Leaders. He also leads the Everything Network, and hosts the Everything Conference and associated events throughout the year.
Andrew Tilsley	Andy leads both of our Sutton services with his wife Joy, as well as preaching at all services and occasionally at other churches. Andy is now co-Senior Leader with Joel Wade.
Joel Wade	Joel led both of our Mile End services until Easter 2024, at which point he took over the leadership of the Central service. Joel preaches across all of our services, leads the staff team and is now co-Senior Leader with Andy Tilsley.
Lars Due Christensen	Lars moved back to his home country of Denmark in September 2023, but continued to work part-time for Christ Church London until July 2024, supporting the leadership transition, preaching at the Stockwell service and leading the STEPS ministry.
Adnan Khan	Adnan served as Associate Pastor of our Mile End services until Easter 2024, at which point he and his wife Jessica (who is not on the CCL staff team) took over from Joel Wade as the Mile End Service Leader. He is also Discipleship Lead for the whole church.
Catherine Ishola	Catherine is based in our Sutton service and oversaw the Families and Kids work across the whole church until May 2024. She now focuses solely on the Kids work in Sutton and preaches across all of our services.
Helen Marasha	Helen leads our Stockwell Service with her husband Shaninga. Helen also oversees Social Action. (Shaninga is not on the CCL staff team).
Joy Tilsley	Joy leads our Sutton services with her husband Andy and joined the staff team in June 2024, to lead our Families and Kids work across the whole church.
Louisa Richards	Lou oversees Pastoral Care across the church, and as of July 2024, leads the HR strategy and implementation.
Natalie Powell	Natalie is Associate Pastor of our Central service, and is Head of Worship for the whole church.
Sarah Cobbold	Sarah oversees the day-to-day operational activities of the church including logistics, events, HR, safeguarding, compliance and general administration.
Vivian Lam	Vivian oversees the Cantonese-speaking service in Sutton, supported by Andy Tilsley.

## **Christ Church London**

### **Report of the Trustees for the Year Ended 31 July 2024**

#### **Public benefit**

When planning activities for the year and the services available to the local community, the trustees ensure they have due regard to the public benefit guidance published by the Charities Commission, namely:

- PB1 Public Benefit: the public benefit requirement (September 2013)
- PB2 Public Benefit: running a charity (September 2013)
  
- PB3 Public Benefit: reporting (September 2013)
- CC15d - Charity Reporting and Accounting: The essentials March 2016 (updated July 2021)

The great majority of the church's meetings and events are open to the public and are publicised on our website, social media, and by emailed announcements. Individuals in the church are encouraged to invite friends and family as it is a key aim of Christ Church London to attract newcomers into its various activities so that they can participate in and benefit from all that the church has to offer.

The majority of Christ Church London events and activities can be accessed free of charge. When a charge has to be made, every effort is made (e.g. by some form of subsidy) to ensure that the cost does not exclude those for whom the activity would be especially beneficial.

#### **AUDITORS**

In so far as the trustees are aware:

- there is no relevant audit information of which the charitable company's auditors are unaware; and
- the trustees have taken all steps that they ought to have taken to make themselves aware of any relevant audit information and to establish that the auditors are aware of that information.

## **Christ Church London**

### **Report of the Trustees for the Year Ended 31 July 2024**

#### **STRATEGIC REPORT Achievement and performance REVIEW OF THE YEAR'S ACTIVITIES SUNDAY SERVICES**

##### **ATTENDANCE**

Average weekly attendance across the whole church was 559 (2023: 535), which is made up of 433 adults and 126 children.

##### **MILE END**

- Adnan and Jessica Khan became the new Service Leaders of Mile End. Joel Wade has moved to take up the leadership of the Central service
- Morning and Evening services merged on Easter Sunday (31st March)
- Alpha course, training events for evangelism and Serenity services took the place of the evening service
- 5 Community Groups meeting across East London, with 80 people registered as part of a group.
- Hosted 77 guests as part of our partnership with GrowTH Night Shelter. 18 guests were able to secure new homes through Growth, and 3 guests committed their lives to Jesus
- We hosted an art exhibition in collaboration with Qavah Collected (100 guests), and The Last Supperclub (over 100 people), where Joshua Luke Smith delivered three short-talks on Easter themes, with musical performances from Aaliyah Jasz and Alicia Grace.

Average weekly attendance at the morning service was 74 adults and 11 children (2023: 67)

Average weekly attendance at the evening service was 41 adults and 1 child (2023: 53)

##### **CENTRAL**

- Joel Wade became the new Service Leader of the Central Service. David Stroud will remain part of the church and operate in a Founding Pastor role.
- Moved from our venue at London School of Economics in Holborn to Mary Ward House in Russell Square.
- Planted a new Cantonese speaking Sunday community.
- 2 Community groups in Bermondsey/Stockwell and Central London - total of 56 people registered
- Raised money for the Pimlico Foundation at our carol service, a charity focused on supporting and mentoring disadvantaged young people in the Pimlico area

Average weekly attendance was 62 adults and 9 children (2023: 81).

##### **STOCKWELL**

- Formed a new local Leadership Team (6 people) and Core Team (community and ministry/team leaders) have met several times throughout the year and we are seeing the fruits of that.
- Hosted a wonderful Carol Service at Christmas where we had many first time guests as well as performances from the children & youth.
- Kids club ministry with attendance growing from an average of 18 to 26 kids a week.
- Dedicated nine children this year and have welcomed six babies into the church family.
- Ran a coffee morning for parents and children in the Autumn term from Dexter's Adventure Playground in Brixton.
- Set up a weekly Online Prayer Room that grew into a Sunday Prayer Gathering
- Ran three Encounter Prayer & Worship evenings this year with one focussing on prophecy.
- Peter Udall ran a worship workshop for us as we continue to build our worship team.
- Our community has been strengthened by our Young at Heart group aimed at people who want to socialise and make friends
- Hosted a Marriage MOT for all the services, and we were also delighted to celebrate three weddings in our service this year.
- With a number of people moving on from the service, and a relatively new leadership team, we took the opportunity to make a fresh start with our midweek communities, forming two groups bringing the total to seven Community Groups meeting in people's homes each week.

Average weekly attendance was 49 adults and 22 children (2023: 65).



## Christ Church London

### Report of the Trustees for the Year Ended 31 July 2024

#### SUTTON

- Continued to see growth in both the English and Cantonese speaking services, maximising space in both services plus children's & youth work - average attendance increased from 255 to 290.
- As a result we secured a new venue, Sutton High School, with a capacity for 600 adults plus ample space for children and young people. We served notice on our existing venues, to move to our new venue on 1st September 2024.
- As part of our venue move, we made the decision to integrate both English & Cantonese services twice a month from the Autumn of 2024, and spent the Summer term preparing both services for this move.
- We held a very successful Lunar New Year Celebration in February 2024, with over 300 people in attendance, including local councillors and the future MP for the local area, who won his seat in the July General Election.
- We regularly had over 40 young people (11-18) on an Alpha Course during the Autumn of 23, and took 25 of them on a youth weekend away at the end of October. In the summer of 2024 we also took 16 young people to Dreaming The Impossible Youth Event, and we now have over 60 11-18s as part of our community in Sutton.
- We ran regular events for Years 5-6 to help build community in preparation for them accessing our youth work shortly, and continued to see significant growth in the number of children and families coming every Sunday.

Average weekly attendance at the English service was 119 adults and 83 children (2023: 185)

Average weekly attendance at the Cantonese service was 88 adults (2023: 70)

#### EXTERNAL GIVING

Christ Church London is committed to supporting both global and local charities that alleviate poverty, illness, and hardship while promoting community and faith. We partner with a number of charities, providing both financial support and volunteer support to a number of local projects.

International donations made this year include £10,000 to Compassion UK's Child Survival Programs in Rwanda, which provide holistic care to mothers and children, and £10,000 to International Justice Mission (IJM) in the Dominican Republic, which has significantly reduced child trafficking in the region. A £3,000 donation was made to Christian Aid in response to the earthquake in Morocco in November 2023.

Locally, Christ Church London has given £10,000 to Refugee Education UK (REUK) to support educational initiatives for unaccompanied refugee children, and £2,000 to the Sutton Community Project, providing food and support to 120 families weekly. The church has continued to partner with GrowTH, a Tower Hamlets charity, which provided shelter to over 70 homeless guests, helping many of them find permanent homes, and Acts 435 which enables individuals in need of help to receive contributions directly from other members of the church. STEPS and Everything became independent charities on 1 February 2024, and we wanted to give them the best possible start as they launched.

STEPS Global was given £30,000 to aid its mission of helping people find freedom, peace, and deeper faith. Over the past year, STEPS Global has directly impacted over 480 lives and connected with more than 1,100 people through its programmes. New resources such as a podcast and Spanish translation have been developed and they have received hundreds of individual reports of how STEPS has healed, restored, and transformed lives, leading to greater peace, a renewed hope, and in almost all cases, a deeper faith. We continue to work closely with STEPS, running and promoting the courses within the church.

The Everything Network was given £46,500 to support them in their mission of building a movement of Christians seeking cultural renewal throughout society. Their key activities this year have been the Everything Leadership Development Cohort, which trains 40 young leaders over the course of the year to develop their sense of calling for the work of cultural renewal. Several of the cohort from this year have been attendees of Christ Church London. The Everything Supper Club is designed to connect senior leaders from many different sectors and enable them to collaborate to bring about renewal. And the annual Everything Conference is set up to gather, encourage and send-out change-making missionaries to work for cultural renewal in whatever sector or part of the world God has them. We continue to work closely with the Everything Network, partnering with them to run the Everything Conference and promoting their events and programmes within the church.

For both STEPS Global and the Everything Network we have created a Memorandum of Understanding which entails Christ Church London financially helping the launch of both charities up until 2025/26, subject to ongoing review with the trustees

## Christ Church London

### Report of the Trustees for the Year Ended 31 July 2024

#### OPERATIONS

Staff communication is handled both through email, Zoom and regular face-to-face meetings of individuals, teams and the whole office. Staff continue to work from a hybrid model, meeting as a full staff team one day per week, and then working from home or from our building in Mile End for the remainder of the week.

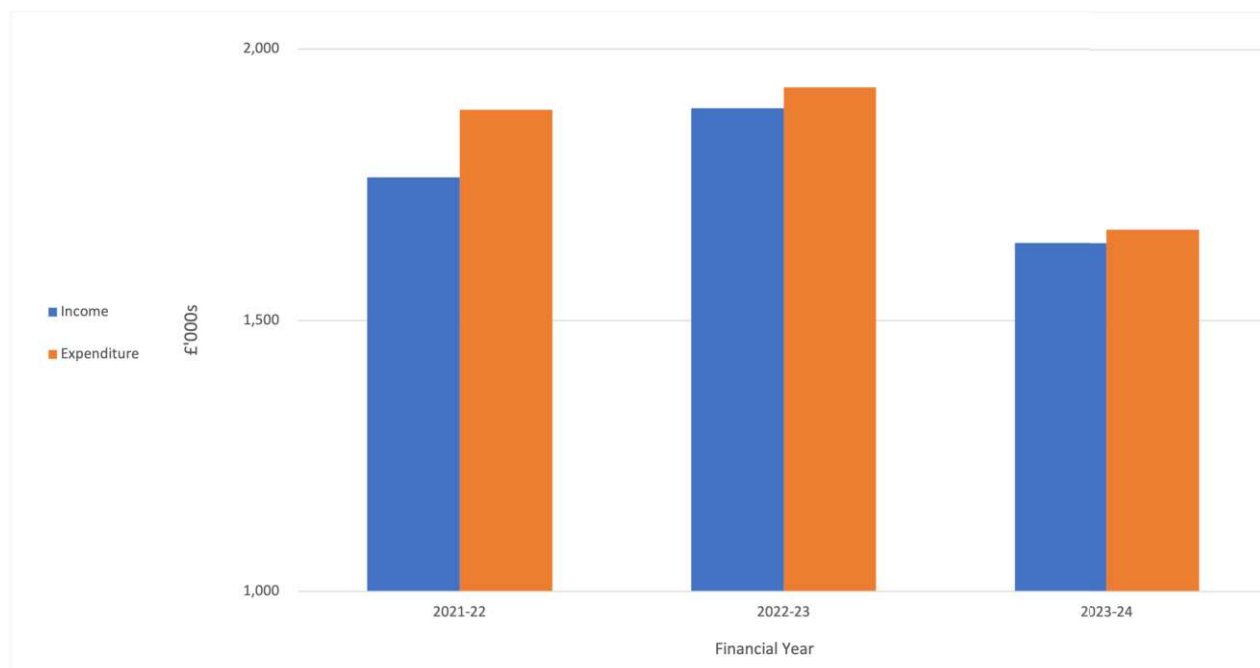
This year we have started meeting weekly at Coborn Street in Mile End. We start each team day with a time of prayer and worship, which has brought the team closer together and given us renewed focus on God, ahead of what is often a busy day of meetings. We also took time to talk through the new leadership transition at church, helping the staff to own the new values, and as part of this focus went through the course, 'Practicing the Way' as a team over the summer term.

Our risk management system is ongoing, and we undertake an annual review of policies and risks to ensure compliance.

#### Financial review INCOMING RESOURCES

Total incoming resources for the year were £1,643,000 compared to £1,891,000 received in the prior year. £1,349,000 of this income was received from the church community as general giving (2023: £1,311,000) (excluding Gift Days).

Other income includes funds that were received during the year from attendees at conferences, training events, and courses, preaching gifts and donations to social action projects.



**Christ Church London**

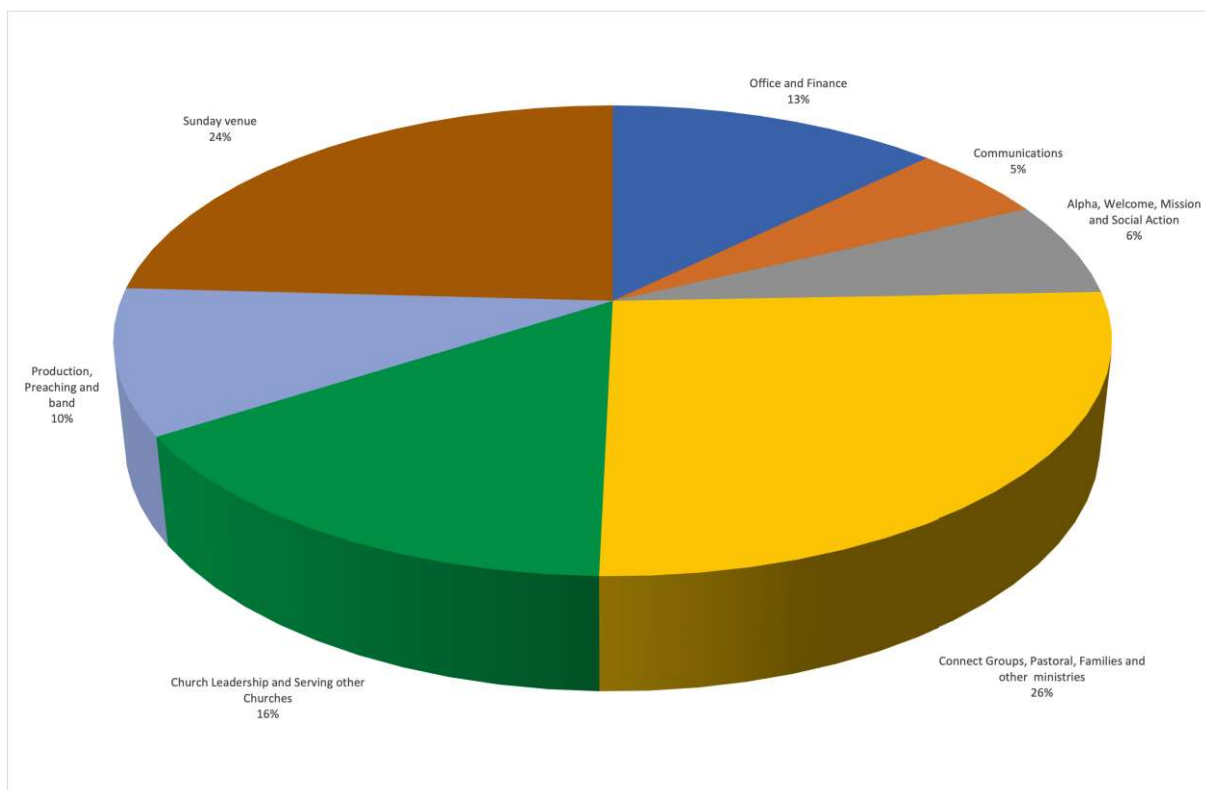
**Report of the Trustees  
for the Year Ended 31 July 2024**

**RESOURCE EXPENDITURE**

The expenditure of resources on the church's activities during the year of £1,668,000 (2023: £1,929,000) was in line with the church's charitable aims.

The categories used to present the church's expenditure in the financial statements summarises the activities and ministries undertaken by the church. Staff and administration/overhead costs have been allocated across activity and ministry areas on an estimated time basis. Support costs and Fundraising costs have been detailed separately. The cost categories comprise:

Sunday Venue	The cost for the year to 31 July 2024 £402,000 (2023: £355,000) includes the London School of Economics (Old Building and Peacock Theatre), Platanos College, Cryer Arts Theatre, and Coborn Street on Sundays. We continually review our venues to ensure they are fit for purpose.
Production, Preaching, and Band	Sunday costs (excluding venues - shown separately above) were £166,000 (2023: £175,000).
Connect Groups, Pastoral, Families, and Other Ministries	The combined cost for these ministries were £422,000 (2023: £557,000). This includes the STEPS and Everything ministries.
Alpha, Welcome, Mission, and Social Action	The combined cost for the year is £108,000 (2023: £202,000)
Church Leadership and serving other churches	Staff time spent in leading the church and serving in other contexts totalled £259,000 (2023: £278,000).
Communications	Communication, media, web, and IT came to £81,000 (2023: £122,000).
Office and Finance	The administrative functions of the church including office administration, finance, and staff welfare £211,000 (2023: £237,000). This includes the Coborn Street (Mile End) lease that does not relate to Sunday Venue Hire.



## **POLICIES AND PROCEDURES**

The following policies and procedures remained in place during the year, and followed a formal internal review by both key staff members and trustees:

- 1) Safeguarding policy and procedures.
- 2) Equipment set up and set down health and safety procedures associated with all the church's events, including Sunday services, training events and other events.
- 3) First aid, fire and evacuation procedures during Sunday services and training events.
- 4) Income protection and recording.
- 5) Data protection, retention and privacy policy in line with new legislation.
- 6) Data back-up for Information Technology systems.
- 7) On-going review of terms and conditions of contracts with external providers.
- 8) Formal staff appraisal process.
- 9) Code of conduct
- 10) Concerns (internal and external), accountability and whistleblowing

## **GRANT MAKING POLICY**

Gifts to external organisations and individuals are considered by the service leaders on the basis of need and fulfilment of the charitable objectives and decided by the Senior Leaders. There are no upper or lower limits of support. Grants are made in conjunction with regular contact, budgetary control and adequate reporting.

### **Reserves policy**

The trustees have set a policy of retaining reserves sufficient for the foreseeable needs of the Church. Where there is specific capital expenditure, foreseen amounts are set aside into designated funds so the general reserves are available to meet the costs of normal running and expansion of the Church and to ensure the Church can meet the commitments that have been entered into. The level of general reserves required is anticipated to be approximately three months of the level of general expenditure.

To ensure the minimum reserves level is guaranteed by the Financial Services Compensation Scheme (FSCS), this year we completed our project to diversify our accounts across several banks. This process was delayed by the COVID-19 pandemic, but we now have five accounts open and therefore have £425,000 under FSCS protection.

At 31 July 2024, the unrestricted reserves met the minimum amount required by the trustees.

## **FUNDS AND BALANCE SHEET**

Tangible fixed assets had a net book value at the end of the year of £13,400 (2023: £20,700). This is stated after deducting a depreciation charge of £13,300 for the year (2023: £15,900) and additions of £6,000 (2023: £16,100). The principal assets are sound and visual equipment used during the various church meetings and IT equipment used in the church office. Expenditure on repairs, which have not been capitalised, totalled £12,879 for the year.

Cash at bank funds held at the year-end were £1,101,000 (2023: £1,129,000), representing £462,000 of general funds, £440,000 designated funds and £199,000 of restricted funds. Details on the movement of funds and year-end balances can be found in note 17 to the Financial Statements.

## Christ Church London

### Report of the Trustees for the Year Ended 31 July 2024

#### **FUTURE OBJECTIVES**

Our key objectives for the next year will be to facilitate the multiplication of leaders, services and ministries:

- Formerly handover the senior leadership of the church from David Stroud to Andy Tilsley and Joel Wade.
- Launch of new values (Presence, Formation, Mission) during the Autumn term at our 20th Birthday Celebration and an October sermon and Community Group series.
- Form a new Leadership Team in September 2024 to support Andy Tilsley and Joel Wade for the new chapter and communicate this to the church.
- Renewed focus on the development of leaders across our services so there is an ongoing pipeline of women and men ready to serve the church whether as volunteers or staff members.
- Launch a new welcome and integration process, including new printed and online resources which clearly express the vision and values of the church to make it easier for new attendees to move to be regular attenders and contributors in the life of the church
- Explore and support the establishment of a new, permanent Cantonese speaking service in Central London
- Establish connections to the wider church through relational connection, leadership events and whole church events.
- Clarify the wider leadership structure of the church at a local service level
- Continue our property search by exploring current and future opportunities and ensuring sufficient staff and trustee time is available to be able to resource this well
- To contribute to the spiritual health of the church by giving clear discipleship teaching to those who are part of Christ Church London

#### **STRUCTURE, GOVERNANCE AND MANAGEMENT**

##### **Governing document**

The charity is controlled by its governing document, a deed of trust, and constitutes a limited company, limited by guarantee, as defined by the Companies Act 2006.

The charity is controlled by its governing document; the Memorandum and Articles of Association, and constitutes a limited company, limited by guarantee, as defined by the Companies Act 2006.

##### **Senior Leadership Team**

David Stroud  
Andrew Tilsley  
Lars Due Christensen  
Joel Wade

##### **Key management remuneration**

Salaries and remuneration for key management personnel are set by the Trustees following consultation and guidance from the Salaries Review committee, which is comprised of the Senior Leader (who is also a trustee) and three non-staff trustees with experience in charity, government, and commercial industries. The Senior Leader is not involved in reviewing or setting their own salary.

##### **EMPLOYEES AND VOLUNTEERS**

The work of Christ Church London relies on the commitment and hard work of its employed staff, as well as its volunteers. Christ Church London seeks to be a workplace that represents the diversity we see in the city. Our recruitment and development policies reflect our Christian values and adhere to UK legislation.

At year end, the church employed 13 full-time (2023: 12) and 13 part-time staff (2023: 10). Our staff team supports the vision of Christ Church London, alongside the extensive input and time of the church community who serve and give faithfully.

Christ Church London has ongoing relationships with a number of respected Christian leaders, who form a Council of Reference. The Senior Leaders and the Trustees remain responsible for the leadership and governance of the church. Further details are provided in Appendix 1.

## **Christ Church London**

### **Report of the Trustees for the Year Ended 31 July 2024**

#### **INTERNAL CONTROLS AND RISK MANAGEMENT**

The trustees have overall responsibility for the Christ Church London system of internal controls. Such a system can provide only reasonable, but not absolute, assurance against errors or frauds.

Christ Church London operates a planning and budgeting system with an annual budget approved by the trustees. Significant changes are subject to specific approval. A finance reporting system compares results with the budget on a monthly basis.

The trustees are satisfied that systems are in place to monitor, manage, and mitigate Christ Church London's exposure to major risks. They consider that maintaining Christ Church London reserves at the policy levels and reviewing internal controls and risks will provide Christ Church London with adequate risk assurance and sufficient resources in the event of adverse conditions. They also recognise that the nature of some of Christ Church London's work requires active acceptance and management of some risks when undertaking activities to achieve the objectives of the charitable company.

All areas of church life have been subject to a risk review using our risk management software system, and the trustees have reviewed the most significant risks.

All major insurable risks are subject to normal churches' and employers' insurance. Contractual risks are reviewed before entering, to assess that they could not significantly impact the church's ability to fulfil its objectives.

Website:  
[christchurchlondon.org](http://christchurchlondon.org)

#### **REFERENCE AND ADMINISTRATIVE DETAILS**

**Registered Company number**  
05546205 (England and Wales)

**Registered Charity number**  
1111950

**Registered office**  
1-3 Coborn Street  
London  
E3 2AB

**Trustees**  
Mark Goodchild (Chair)  
David Stroud  
David Akinluyi  
Smart Kemiki (Resigned Aug 2023)  
Emily Ribeiro  
Michael Thomas  
Chee Yeen Fung  
Samuel Kay  
Hannah Cockburn (Appointed 13 June 2023)

**Company Secretary**  
Claire Odunlami

**Christ Church London**

**Report of the Trustees  
for the Year Ended 31 July 2024**

**Auditors**

Brewers Chartered Accountants  
Bourne House  
Queen Street  
Gomshall  
Surrey  
GU5 9LY

**Bankers:**

HSBC Bank PLC  
281 Chiswick High Rd  
Chiswick  
London  
W4 4HJ

**STATEMENT OF TRUSTEES' RESPONSIBILITIES**

The trustees (who are also the directors of Christ Church London for the purposes of company law) are responsible for preparing the Annual Report and the financial statements in accordance with applicable law and United Kingdom Accounting Standards (United Kingdom Generally Accepted Accounting Practice).

Company law requires the trustees to prepare financial statements for each financial year which give a true and fair view of the state of affairs of the charitable company and of the incoming resources and application of resources, including the income and expenditure, of the charitable company for that period. In preparing those financial statements, the trustees are required to

- select suitable accounting policies and then apply them consistently;
- observe the methods and principles in the Charity SORP;
- make judgements and estimates that are reasonable and prudent;
- prepare the financial statements on the going concern basis unless it is inappropriate to presume that the charitable company will continue in business.

The trustees are responsible for keeping proper accounting records which disclose with reasonable accuracy at any time the financial position of the charitable company and to enable them to ensure that the financial statements comply with the Companies Act 2006. They are also responsible for safeguarding the assets of the charitable company and hence for taking reasonable steps for the prevention and detection of fraud and other irregularities.

In so far as the trustees are aware:

- there is no relevant audit information of which the charitable company's auditors are unaware; and
- the trustees have taken all steps that they ought to have taken to make themselves aware of any relevant audit information and to establish that the auditors are aware of that information.

**AUDITORS**

The auditors, Brewers Chartered Accountants, will be proposed for re-appointment at the forthcoming Annual General Meeting.

Report of the trustees, incorporating a strategic report, approved by order of the board of trustees, as the company directors, on 12 November 2024 and signed on the board's behalf by:

Mark Goodchild  
.....  
M Goodchild – Trustee

## **Report of the Independent Auditors to the Members of Christ Church London**

### **Opinion**

We have audited the financial statements of Christ Church London (the 'charitable company') for the year ended 31 July 2024 which comprise the Statement of Financial Activities, the Balance Sheet, the Cash Flow Statement and notes to the financial statements, including a summary of significant accounting policies. The financial reporting framework that has been applied in their preparation is applicable law and United Kingdom Accounting Standards (United Kingdom Generally Accepted Accounting Practice).

In our opinion the financial statements:

- give a true and fair view of the state of the charitable company's affairs as at 31 July 2024 and of its incoming resources and application of resources, including its income and expenditure, for the year then ended;
- have been properly prepared in accordance with United Kingdom Generally Accepted Accounting Practice; and
- have been prepared in accordance with the requirements of the Companies Act 2006.

### **Basis for opinion**

We conducted our audit in accordance with International Standards on Auditing (UK) (ISAs (UK)) and applicable law. Our responsibilities under those standards are further described in the Auditors' responsibilities for the audit of the financial statements section of our report. We are independent of the charitable company in accordance with the ethical requirements that are relevant to our audit of the financial statements in the UK, including the FRC's Ethical Standard, and we have fulfilled our other ethical responsibilities in accordance with these requirements. We believe that the audit evidence we have obtained is sufficient and appropriate to provide a basis for our opinion.

### **Conclusions relating to going concern**

In auditing the financial statements, we have concluded that the trustees' use of the going concern basis of accounting in the preparation of the financial statements is appropriate.

Based on the work we have performed, we have not identified any material uncertainties relating to events or conditions that, individually or collectively, may cast significant doubt on the charitable company's ability to continue as a going concern for a period of at least twelve months from when the financial statements are authorised for issue.

Our responsibilities and the responsibilities of the trustees with respect to going concern are described in the relevant sections of this report.

### **Other information**

The trustees are responsible for the other information. The other information comprises the information included in the Annual Report, other than the financial statements and our Report of the Independent Auditors thereon.

Our opinion on the financial statements does not cover the other information and, except to the extent otherwise explicitly stated in our report, we do not express any form of assurance conclusion thereon.

In connection with our audit of the financial statements, our responsibility is to read the other information and, in doing so, consider whether the other information is materially inconsistent with the financial statements or our knowledge obtained in the audit or otherwise appears to be materially misstated. If we identify such material inconsistencies or apparent material misstatements, we are required to determine whether this gives rise to a material misstatement in the financial statements themselves. If, based on the work we have performed, we conclude that there is a material misstatement of this other information, we are required to report that fact. We have nothing to report in this regard.

### **Opinions on other matters prescribed by the Companies Act 2006**

In our opinion, based on the work undertaken in the course of the audit:

- the information given in the Report of the Trustees for the financial year for which the financial statements are prepared is consistent with the financial statements; and
- the Report of the Trustees has been prepared in accordance with applicable legal requirements.



## **Report of the Independent Auditors to the Members of Christ Church London**

### **Matters on which we are required to report by exception**

In the light of the knowledge and understanding of the charitable company and its environment obtained in the course of the audit, we have not identified material misstatements in the Report of the Trustees.

We have nothing to report in respect of the following matters where the Companies Act 2006 requires us to report to you if, in our opinion:

- adequate accounting records have not been kept or returns adequate for our audit have not been received from branches not visited by us; or
- the financial statements are not in agreement with the accounting records and returns; or
- certain disclosures of trustees' remuneration specified by law are not made; or
- we have not received all the information and explanations we require for our audit.

### **Responsibilities of trustees**

As explained more fully in the Statement of Trustees' Responsibilities, the trustees (who are also the directors of the charitable company for the purposes of company law) are responsible for the preparation of the financial statements and for being satisfied that they give a true and fair view, and for such internal control as the trustees determine is necessary to enable the preparation of financial statements that are free from material misstatement, whether due to fraud or error.

In preparing the financial statements, the trustees are responsible for assessing the charitable company's ability to continue as a going concern, disclosing, as applicable, matters related to going concern and using the going concern basis of accounting unless the trustees either intend to liquidate the charitable company or to cease operations, or have no realistic alternative but to do so.

## **Report of the Independent Auditors to the Members of Christ Church London**

### **Our responsibilities for the audit of the financial statements**

Our objectives are to obtain reasonable assurance about whether the financial statements as a whole are free from material misstatement, whether due to fraud or error, and to issue a Report of the Independent Auditors that includes our opinion. Reasonable assurance is a high level of assurance, but is not a guarantee that an audit conducted in accordance with ISAs (UK) will always detect a material misstatement when it exists. Misstatements can arise from fraud or error and are considered material if, individually or in the aggregate, they could reasonably be expected to influence the economic decisions of users taken on the basis of these financial statements.

The extent to which our procedures are capable of detecting irregularities, including fraud is detailed below:

Based on our discussions with the charity's management and the Trustees, we identified that the following laws and regulations are significant to the entity:

Those laws and regulations considered to have a direct effect on the financial statements include UK financial reporting standards and Charity Law.

Those laws and regulations for which non-compliance may be fundamental to the operating aspects of the charity and therefore may have a material effect on the financial statements include compliance with the charitable objectives, public benefit, safeguarding and health and safety legislation. These matters were discussed amongst the engagement team at the planning stage and the team remained alert to non-compliance throughout the audit.

Audit procedures undertaken in response to the potential risks relating to irregularities (which include fraud and non-compliance with laws and regulations) comprised of: inquires of management and the Trustees as to whether the entity complies with such laws and regulations; enquiries with the same concerning any actual or potential litigation or claims; inspection of relevant legal correspondence; review of Trustee meeting minutes; testing the appropriateness of journal entries; and the performance of analytical review to identify unexpected movements in account balances which may be indicative of fraud.

No instances of material non-compliance were identified. However, the likelihood of detecting irregularities, including fraud, is limited by the inherent difficulty in detecting irregularities, the effectiveness of the entity's controls and the nature, timing and extent of the audit procedures performed. Irregularities that result from fraud might be inherently more difficult to detect than irregularities from error. As explained above there is an unavoidable risk that material misstatements may not be detected, even though the audit has been planned and performed in accordance with ISAs (UK).

A further description of our responsibilities for the audit of the financial statements is located on the Financial Reporting Council's website at [www.frc.org.uk/auditorsresponsibilities](http://www.frc.org.uk/auditorsresponsibilities). This description forms part of our Report of the Independent Auditors.

## Report of the Independent Auditors to the Members of Christ Church London

### Use of our report

This report is made solely to the charitable company's members, as a body, in accordance with Chapter 3 of Part 16 of the Companies Act 2006. Our audit work has been undertaken so that we might state to the charitable company's members those matters we are required to state to them in an auditors' report and for no other purpose. To the fullest extent permitted by law, we do not accept or assume responsibility to anyone other than the charitable company and the charitable company's members as a body, for our audit work, for this report, or for the opinions we have formed.



Andrew Skilton (Nov 15, 2024 16:21 GMT)

Andrew Skilton ACA (Senior Statutory Auditor)  
for and on behalf of Brewers Chartered Accountants  
Bourne House  
Queen Street  
Gomshall  
Surrey  
GU5 9LY

Date: **15/11/2024**  
.....

Christ Church London

Statement of Financial Activities  
for the Year Ended 31 July 2024

	Notes	Unrestricted funds £	Restricted funds £	31.7.24 Total funds £	31.7.23 Total funds £
<b>INCOME</b>					
Voluntary donations	2	1,571,236	-	1,571,236	1,844,972
<b>Charitable activities</b>	4				
Charitable activities		10,148	51,892	62,040	41,902
Investment income	3	<u>9,657</u>	<u>-</u>	<u>9,657</u>	<u>3,756</u>
<b>Total</b>		<u>1,591,041</u>	<u>51,892</u>	<u>1,642,933</u>	<u>1,890,630</u>
<b>EXPENDITURE ON</b>					
Raising funds	5	2,687	8,544	11,231	6,000
<b>Charitable activities</b>	6				
Charitable activities		1,370,706	37,347	1,408,053	1,633,756
Support Costs		<u>248,474</u>	<u>-</u>	<u>248,474</u>	<u>289,115</u>
<b>Total</b>		<u>1,621,867</u>	<u>45,891</u>	<u>1,667,758</u>	<u>1,928,871</u>
<b>NET INCOME/(EXPENDITURE)</b>		<b>(30,826)</b>	<b>6,001</b>	<b>(24,825)</b>	<b>(38,241)</b>
<b>RECONCILIATION OF FUNDS</b>					
Total funds brought forward		<u>929,749</u>	<u>192,730</u>	<u>1,122,479</u>	<u>1,160,720</u>
<b>TOTAL FUNDS CARRIED FORWARD</b>		<u><u>898,923</u></u>	<u><u>198,731</u></u>	<u><u>1,097,654</u></u>	<u><u>1,122,479</u></u>

Christ Church London

**Balance Sheet**  
31 July 2024

	Notes	Unrestricted funds £	Restricted funds £	31.7.24 Total funds £	31.7.23 Total funds £
<b>FIXED ASSETS</b>					
Tangible assets	12	<b>13,424</b>	-	<b>13,424</b>	20,709
<b>CURRENT ASSETS</b>					
Stocks	13	-	-	-	5,710
Debtors	14	<b>71,076</b>	-	<b>71,076</b>	100,991
Cash at bank and in hand		<b>902,220</b>	<b>198,731</b>	<b>1,100,951</b>	1,129,025
		<b>973,296</b>	<b>198,731</b>	<b>1,172,027</b>	1,235,726
<b>CREDITORS</b>					
Amounts falling due within one year	15	<b>(87,797)</b>	-	<b>(87,797)</b>	(133,956)
<b>NET CURRENT ASSETS</b>		<b>885,499</b>	<b>198,731</b>	<b>1,084,230</b>	1,101,770
<b>TOTAL ASSETS LESS CURRENT LIABILITIES</b>		<b>898,923</b>	<b>198,731</b>	<b>1,097,654</b>	1,122,479
<b>NET ASSETS</b>		<b>898,923</b>	<b>198,731</b>	<b>1,097,654</b>	1,122,479
<b>FUNDS</b>	16				
Unrestricted funds				<b>898,923</b>	929,749
Restricted funds				<b>198,731</b>	192,730
<b>TOTAL FUNDS</b>				<b>1,097,654</b>	1,122,479

The financial statements were approved by the Board of Trustees and authorised for issue on 12 November 2024 and were signed on its behalf by:

*Mark Goodchild*

Mark Goodchild (Nov 15, 2024 13:21 GMT)

M Goodchild – Trustee

Christ Church London

**Cash Flow Statement  
for the Year Ended 31 July 2024**

	Notes	31.7.24 £	31.7.23 £
<b>Cash flows from operating activities</b>			
Cash generated from operations	1	<u>(31,736)</u>	<u>5,746</u>
Net cash (used in)/provided by operating activities		<u>(31,736)</u>	<u>5,746</u>
<b>Cash flows from investing activities</b>			
Purchase of tangible fixed assets		<u>(5,995)</u>	(16,106)
Interest received		<u>9,657</u>	<u>3,756</u>
Net cash provided by/(used in) investing activities		<u>3,662</u>	<u>(12,350)</u>
<b>Change in cash and cash equivalents in the reporting period</b>		<b>(28,074)</b>	<b>(6,604)</b>
<b>Cash and cash equivalents at the beginning of the reporting period</b>		<b><u>1,129,025</u></b>	<b><u>1,135,629</u></b>
<b>Cash and cash equivalents at the end of the reporting period</b>		<b><u>1,100,951</u></b>	<b><u>1,129,025</u></b>

Christ Church London

Notes to the Cash Flow Statement  
for the Year Ended 31 July 2024

<b>1. RECONCILIATION OF NET EXPENDITURE TO NET CASH FLOW FROM OPERATING ACTIVITIES</b>		
	<b>31.7.24</b>	31.7.23
	£	£
<b>Net expenditure for the reporting period (as per the Statement of Financial Activities)</b>	<b>(24,825)</b>	(38,241)
<b>Adjustments for:</b>		
Depreciation charges	<b>13,280</b>	15,914
Interest received	<b>(9,657)</b>	(3,756)
Decrease in stocks	<b>5,710</b>	685
Decrease/(increase) in debtors	<b>29,915</b>	(23,889)
(Decrease)/increase in creditors	<b>(46,159)</b>	55,033
<b>Net cash (used in)/provided by operations</b>	<b><u>(31,736)</u></b>	<u>5,746</u>

**2. ANALYSIS OF CHANGES IN NET FUNDS**

	At 1.8.23	Cash flow	At 31.7.24
	£	£	£
<b>Net cash</b>			
Cash at bank and in hand	<u>1,129,025</u>	<u>(28,074)</u>	<u>1,100,951</u>
	<u>1,129,025</u>	<u>(28,074)</u>	<u>1,100,951</u>
<b>Total</b>	<u><u>1,129,025</u></u>	<u><u>(28,074)</u></u>	<u><u>1,100,951</u></u>

**Notes to the Financial Statements  
for the Year Ended 31 July 2024**

**1. ACCOUNTING POLICIES**

**Basis of preparing the financial statements**

The financial statements of the charitable company, which is a public benefit entity under FRS 102, have been prepared in accordance with the Charities SORP (FRS 102) 'Accounting and Reporting by Charities: Statement of Recommended Practice applicable to charities preparing their accounts in accordance with the Financial Reporting Standard applicable in the UK and Republic of Ireland (FRS 102) (effective 1 January 2019)', Financial Reporting Standard 102 'The Financial Reporting Standard applicable in the UK and Republic of Ireland' and the Companies Act 2006. The financial statements have been prepared under the historical cost convention.

**Income**

All income is recognised in the Statement of Financial Activities once the charity has entitlement to the funds, it is probable that the income will be received and the amount can be measured reliably.

**Expenditure**

Liabilities are recognised as expenditure as soon as there is a legal or constructive obligation committing the charity to that expenditure, it is probable that a transfer of economic benefits will be required in settlement and the amount of the obligation can be measured reliably. Expenditure is accounted for on an accruals basis and has been classified under headings that aggregate all cost related to the category. Where costs cannot be directly attributed to particular headings they have been allocated to activities on a basis consistent with the use of resources.

**Tangible fixed assets**

Depreciation is provided at the following annual rates in order to write off each asset over its estimated useful life.

**Stocks**

Stocks are valued at the lower of cost and net realisable value, after making due allowance for obsolete and slow moving items.

**Taxation**

The charity is exempt from corporation tax on its charitable activities.

**Fund accounting**

Unrestricted funds can be used in accordance with the charitable objectives at the discretion of the trustees.

Restricted funds can only be used for particular restricted purposes within the objects of the charity. Restrictions arise when specified by the donor or when funds are raised for particular restricted purposes.

Further explanation of the nature and purpose of each fund is included in the notes to the financial statements.



Christ Church London

Notes to the Financial Statements - continued  
for the Year Ended 31 July 2024

<b>2. DONATIONS</b>		<b>31.7.24</b>	31.7.23
		£	£
General donations		<b>1,348,865</b>	1,311,199
Special offerings (inc. Gift Day)		<b>195,959</b>	205,774
Social Action & Other Ministries donations		<b>26,412</b>	327,999
		<b><u>1,571,236</u></b>	<u>1,844,972</u>
<b>3. INVESTMENT INCOME</b>		<b>31.7.24</b>	31.7.23
		£	£
Bank interest		<b><u>9,657</u></b>	<u>3,756</u>
<b>4. INCOME FROM CHARITABLE ACTIVITIES</b>		<b>31.7.24</b>	31.7.23
		£	£
Including event income and income from property rental		<b><u>62,040</u></b>	<u>41,902</u>
<b>5. RAISING FUNDS</b>			
<b>Other trading activities</b>		<b>31.7.24</b>	31.7.23
		£	£
Other ministries		<b><u>11,231</u></b>	<u>6,000</u>
<b>6. CHARITABLE ACTIVITIES COSTS</b>			
	Direct	Support	Totals
	Costs	costs (see	
	£	note 7)	£
Charitable activities	<b>1,408,053</b>	-	<b>1,408,053</b>
Support Costs	<b><u>(5,995)</u></b>	<b><u>254,469</u></b>	<b><u>248,474</u></b>
	<b><u>1,402,058</u></b>	<b><u>254,469</u></b>	<b><u>1,656,527</u></b>

Christ Church London

Notes to the Financial Statements - continued  
for the Year Ended 31 July 2024

7. SUPPORT COSTS

Support costs, included in the above, are as follows:

	<b>31.7.24</b>	31.7.23
	Support	Total
	Costs	activities
	£	£
Communications	<b>43,051</b>	<b>58,077</b>
Office and Finance	<b><u>211,418</u></b>	<b><u>231,038</u></b>
	<b><u>254,469</u></b>	<b><u>289,115</u></b>

8. NET INCOME/(EXPENDITURE)

Net income/(expenditure) is stated after charging/(crediting):

	<b>31.7.24</b>	31.7.23
	£	£
Depreciation - owned assets	<b>13,280</b>	15,913
Auditors' remuneration	<b><u>6,500</u></b>	<b><u>6,300</u></b>

9. TRUSTEES' REMUNERATION AND BENEFITS

	<b>2024</b>	2023
	£	£
Trustees' remuneration (including salary, employer Social Security costs and pension contribution)	<b>115,816</b>	135,719

The above remuneration is in respect of the Senior Leader and is in accordance with our Memorandum and Articles of Association. The number of Trustees who received remuneration were 1 (2023: 2).

**Trustees' expenses**

Expenses paid to trustees for the year ended 31 July 2024 amounted to £1,777 (2023: £7,048). This includes reimbursed expenditure for carrying out executive responsibilities across the church's activities by the Senior Leader who also serve as a trustee.

**Key management personnel**

Christ Church London considers its Key Management Personnel to be the Senior Leaders, the Head of Operations, and the Head of Finance. Salaries for these employees were £311,398 (2023: £400,699). Employer Social Security costs and pension contributions were £38,148 and £33,438 (2023: £48,856 and £39,823) respectively.

10. STAFF COSTS

	<b>2024</b>	2023
	£	£
Salaries	<b>782,354</b>	881,646
Employer Social Security costs	<b>77,293</b>	94,065
Employer pension contributions	<b><u>77,124</u></b>	<b><u>86,399</u></b>
	<b><u>936,771</u></b>	<b><u>1,062,110</u></b>

Christ Church London

Notes to the Financial Statements - continued  
for the Year Ended 31 July 2024

10. STAFF COSTS - continued

The average monthly number of employees during the year was as follows:

	31.7.24	31.7.23
Full Time	12	13
Part Time	<u>14</u>	<u>13</u>
	<u><u>26</u></u>	<u><u>26</u></u>

The number of employees whose employee benefits (excluding employer pension costs) exceeded £60,000 was:

	31.7.24	31.7.23
£60,001 - £70,000	1	1
£70,001 - £80,000	1	1
£80,001 - £90,000	-	2
£90,001 - £100,000	<u>1</u>	<u>-</u>
	<u><u>3</u></u>	<u><u>4</u></u>

This is comprised of gross salary. The prior year also included employer social security costs.

11. COMPARATIVES FOR THE STATEMENT OF FINANCIAL ACTIVITIES

	Unrestricted funds £	Restricted funds £	Total funds £
<b>INCOME</b>			
Voluntary donations	1,516,973	327,999	1,844,972
<b>Charitable activities</b>			
Charitable activities	41,902	-	41,902
Investment income	<u>3,756</u>	<u>-</u>	<u>3,756</u>
<b>Total</b>	<u>1,562,631</u>	<u>327,999</u>	<u>1,890,630</u>
<b>EXPENDITURE ON</b>			
Raising funds	6,000	-	6,000
<b>Charitable activities</b>			
Charitable activities	1,307,768	325,988	1,633,756
Support Costs	<u>289,115</u>	<u>-</u>	<u>289,115</u>
<b>Total</b>	<u>1,602,883</u>	<u>325,988</u>	<u>1,928,871</u>
<b>NET INCOME/(EXPENDITURE)</b>	(40,252)	2,011	(38,241)
<b>RECONCILIATION OF FUNDS</b>			
Total funds brought forward	970,001	190,719	1,160,720

Christ Church London

Notes to the Financial Statements - continued  
for the Year Ended 31 July 2024

11. COMPARATIVES FOR THE STATEMENT OF FINANCIAL ACTIVITIES - continued

Unrestricted funds £	Restricted funds £	Total funds £
<u>929,749</u>	<u>192,730</u>	<u>1,122,479</u>

**TOTAL FUNDS CARRIED FORWARD**

12. TANGIBLE FIXED ASSETS

	Plant and machinery £	Computer equipment £	Totals £
<b>COST</b>			
At 1 August 2023	<b>171,695</b>	<b>111,491</b>	<b>283,186</b>
Additions	<u>550</u>	<u>5,445</u>	<u>5,995</u>
At 31 July 2024	<u>172,245</u>	<u>116,936</u>	<u>289,181</u>
<b>DEPRECIATION</b>			
At 1 August 2023	<b>168,611</b>	<b>93,866</b>	<b>262,477</b>
Charge for year	<u>1,050</u>	<u>12,230</u>	<u>13,280</u>
At 31 July 2024	<u>169,661</u>	<u>106,096</u>	<u>275,757</u>
<b>NET BOOK VALUE</b>			
At 31 July 2024	<u>2,584</u>	<u>10,840</u>	<u>13,424</u>
At 31 July 2023	<u>3,084</u>	<u>17,625</u>	<u>20,709</u>

13. STOCKS

	<b>31.7.24</b>	31.7.23
	£	£
Stocks - STEPS Books	<u>-</u>	<u>5,710</u>

14. DEBTORS: AMOUNTS FALLING DUE WITHIN ONE YEAR

	<b>31.7.24</b>	31.7.23
	£	£
Trade debtors	<b>1,192</b>	-
Gift Aid receivable	<b>14,520</b>	17,178
Church Suite Giving Receivable	<b>2,385</b>	-
Online Ticket Shop Control	<b>4,128</b>	-
Prepayments and accrued income	<u>48,851</u>	<u>83,813</u>
	<u>71,076</u>	<u>100,991</u>

Christ Church London

Notes to the Financial Statements - continued  
for the Year Ended 31 July 2024

15. CREDITORS: AMOUNTS FALLING DUE WITHIN ONE YEAR

	<b>31.7.24</b>	31.7.23
	£	£
Trade creditors	<b>34,345</b>	25,986
Credit card control	<b>2,886</b>	-
Accruals and deferred income	<b>22,837</b>	28,310
Income in advance	<b>27,729</b>	79,660
	<b><u>87,797</u></b>	<b><u>133,956</u></b>

16. LEASING AGREEMENTS

Minimum lease payments under non-cancellable operating leases fall due as follow:

	<b>31.7.24</b>	31.7.23
	£	£
Within one year	<b>100,000</b>	100,000
Between one and five years	<b>100,000</b>	200,000
	<b><u>200,000</u></b>	<b><u>300,000</u></b>

17. MOVEMENT IN FUNDS

	At 1.8.23 £	Net movement in funds £	At 31.7.24 £
<b>Unrestricted funds</b>			
General fund	<b>489,749</b>	<b>(30,826)</b>	<b>458,923</b>
Designated fund	<b>440,000</b>	-	<b>440,000</b>
	<b>929,749</b>	<b>(30,826)</b>	<b>898,923</b>
<b>Restricted funds</b>			
Restricted	<b>192,730</b>	<b>6,001</b>	<b>198,731</b>
	<b>1,122,479</b>	<b>(24,825)</b>	<b>1,097,654</b>
<b>TOTAL FUNDS</b>	<b><u>1,122,479</u></b>	<b><u>(24,825)</u></b>	<b><u>1,097,654</u></b>

Net movement in funds, included in the above are as follows:

	Incoming resources £	Resources expended £	Movement in funds £
<b>Unrestricted funds</b>			
General fund	<b>1,591,041</b>	<b>(1,621,867)</b>	<b>(30,826)</b>
<b>Restricted funds</b>			
Restricted	<b>51,892</b>	<b>(45,891)</b>	<b>6,001</b>
	<b>1,642,933</b>	<b>(1,667,758)</b>	<b>(24,825)</b>
<b>TOTAL FUNDS</b>	<b><u>1,642,933</u></b>	<b><u>(1,667,758)</u></b>	<b><u>(24,825)</u></b>

Christ Church London

Notes to the Financial Statements - continued  
for the Year Ended 31 July 2024

17. MOVEMENT IN FUNDS - continued

Comparatives for movement in funds

	At 1.8.22 £	Net movement in funds £	At 31.7.23 £
<b>Unrestricted funds</b>			
General fund	530,001	(40,252)	489,749
Designated fund	<u>440,000</u>	<u>-</u>	<u>440,000</u>
	970,001	(40,252)	929,749
<b>Restricted funds</b>			
Restricted	190,719	2,011	192,730
	<u>                    </u>	<u>                    </u>	<u>                    </u>
<b>TOTAL FUNDS</b>	<u><u>1,160,720</u></u>	<u><u>(38,241)</u></u>	<u><u>1,122,479</u></u>

Comparative net movement in funds, included in the above are as follows:

	Incoming resources £	Resources expended £	Movement in funds £
<b>Unrestricted funds</b>			
General fund	1,562,631	(1,602,883)	(40,252)
<b>Restricted funds</b>			
Restricted	327,999	(325,988)	2,011
	<u>                    </u>	<u>                    </u>	<u>                    </u>
<b>TOTAL FUNDS</b>	<u><u>1,890,630</u></u>	<u><u>(1,928,871)</u></u>	<u><u>(38,241)</u></u>

A current year 12 months and prior year 12 months combined position is as follows:

	At 1.8.22 £	Net movement in funds £	At 31.7.24 £
<b>Unrestricted funds</b>			
General fund	530,001	(71,078)	458,923
Designated fund	<u>440,000</u>	<u>-</u>	<u>440,000</u>
	970,001	(71,078)	898,923
<b>Restricted funds</b>			
Restricted	190,719	8,012	198,731
	<u>                    </u>	<u>                    </u>	<u>                    </u>
<b>TOTAL FUNDS</b>	<u><u>1,160,720</u></u>	<u><u>(63,066)</u></u>	<u><u>1,097,654</u></u>

## Christ Church London

### Notes to the Financial Statements - continued for the Year Ended 31 July 2024

#### 17. MOVEMENT IN FUNDS - continued

A current year 12 months and prior year 12 months combined net movement in funds, included in the above are as follows:

	Incoming resources £	Resources expended £	Movement in funds £
<b>Unrestricted funds</b>			
General fund	3,153,672	(3,224,750)	(71,078)
<b>Restricted funds</b>			
Restricted	379,891	(371,879)	8,012
	<hr/>	<hr/>	<hr/>
<b>TOTAL FUNDS</b>	<u>3,533,563</u>	<u>(3,596,629)</u>	<u>(63,066)</u>

#### 18. RELATED PARTY DISCLOSURES

Chee Yeen Fung is a trustee of Christ Church London. Chee Yeen is the sister of Yu Yeen Fung who was employed during the year as a Communications and Operations Coordinator. The total remuneration for Yu Yeen during the year amounted to £15,672. Chee Yeen was not involved in any decisions regarding Yu Yeen's remuneration.

David Stroud is a trustee of Christ Church London and Ad Omnia Renovanda Trust 'AORT' (previously known as the Everything Network). AORT received charitable status on 10 March 2024. During the financial year Christ Church London supported AORT through a donation of £46,500 and staff time. David was not involved in determining the level of support.

The cumulative total of donations given without conditions by the trustees and their related parties during the year was £329,927, including Gift Aid (2023: £333,090). The cumulative total of donations with restrictions to Everything and Families ministries was £73,085 (2023: £41,461).

#### 19. GUARANTEE STATUS

The company is limited by guarantee, which means that every member undertakes to contribute to the assets of the company in the event of a winding up, including any members up to one year after ceasing to be a member, such amounts as may be required not exceeding £10.

## **APPENDIX 1**

### **CHRIST CHURCH LONDON'S COUNCIL OF REFERENCE**

#### **ANDY CROUCH**

Andy Crouch is partner for theology and culture at Praxis, an organisation that works as a creative engine for redemptive entrepreneurship. He is the author of several books, the most recent of which is *The Life We're Looking For: Reclaiming Relationships in a Technological World*.

#### **DAVID DEVENISH**

David serves Newfrontiers internationally as part of the Newfrontiers Together Team. He has many years' experience of working with churches in the UK and other cultures around the world.

#### **REV NICKY AND PIPPA GUMBEL**

Nicky is the pioneer of the Alpha Course, which runs across the world, and was the Vicar of Holy Trinity Brompton, one of the largest Anglican Churches in the UK, for 17 years. Nicky and Pippa together write the Bible in One Year reading plan.

#### **DR KRISH KANDIAH OBE**

Krish founded Home For Good, a charity seeking to find loving homes for vulnerable children, and The Sanctuary Foundation, who support refugees to find welcome, work and worthwhile housing in the UK. He has authored 13 books, including *Paradoxology* and *Home for Good: Making a Difference for Vulnerable Children*.

#### **REV CANON PAUL MACONOCHIE**

Paul is the Leadership Development Director at Grace Gathering church in Indiana, USA. Paul also leads the 3D Movement National Team. He was previously the Senior Leader at Network Church Sheffield and has helped many churches re-engineer their small group structures.

#### **REV CANON JOHN AND ELEANOR MUMFORD**

John and Eleanor are co-ordinators of the Vineyard International Executive, after leading the Vineyard Church UK for over 20 years.

#### **DR AMY ORR-EWING**

Amy is an international author, speaker, and theologian who addresses the deep questions of our day with meaningful answers found in the Christian faith. She is the author of multiple books including, *Where is God in All the Suffering?* and the bestselling *Why Trust The Bible?*.