



# Ruth Hayman Trust

**A N N U A L R E P O R T**

APRIL 2023 - MARCH 2024

THE RUTH HAYMAN TRUST PROVIDES EDUCATIONAL GRANTS TO ADULTS WHO HAVE COME TO SETTLE IN THE U.K. AND WHOSE FIRST LANGUAGE IS NOT ENGLISH.

P.O. BOX 17685 LONDON N6 6WD [www.ruthhaymantrust.org.uk](http://www.ruthhaymantrust.org.uk) CHARITYCOMMISSION REGISTRATION NO 287268



**Eniby S. from Malawi**, who was awarded £1,500 for a nursing degree says: *"I'm delighted to inform you that I've now completed my nursing degree and have recently started working as a community nurse. It has always been my goal to give back to my community and this job gives me the opportunity to do so. I could not have achieved this without the timely support from the Ruth Hayman Trust. I hope I can help inspire others and support future applications to continue this incredible work".*

## **S U M M A R Y O F O U R Y E A R**

**Thanks to our generous supporters, we raised £100,390, a record amount.**

That's over £30,000 more than last year, allowing us to continue awarding grants of up to £1,500.

**We gave awards of more than £100,000.** 183 grants were awarded totalling £104,000 for fees,

books and equipment. Sadly, we did not have sufficient funds to fulfil all applicants' requests.

**We supported applicants from 42 countries living across the U.K.** to study on a wide range of courses. The majority of successful applicants were seeking sanctuary in the U.K. as refugees and asylum seekers.

**This year, 99% of our spending went directly to applicants.** We give our thanks to all those who covered administrative costs and particularly those who gave their services free.

## APPLICANTS WE SUPPORTED

***"I was over the moon when I got this grant. It's not just the money. It gave me the confidence to apply for other funding and now I have what I need for this year. When I started this year, I didn't have enough for the fees and was so stressed that it was affecting my studies. Now I'm catching up, and have enough money to take proper care of my own health."***

(S from Afghanistan was awarded £1,500 towards her second-year degree course in Medicine after an outstanding reference from her tutor.)

Like the student quoted above, our beneficiaries lack the means to study and progress to work without our grants. We support adults who have come to settle in the U.K. and whose first language is not English, especially those seeking sanctuary. Many of them have suffered severe financial and social hardship, including those who are survivors of modern slavery, domestic violence or trafficking.

During 2023-24, our successful applicants came from 42 different countries, the largest number from Iran (27) followed by Sudan (23), Ukraine (15), Afghanistan (12) and Syria (11). 82% of grants were awarded to those who had come to seek sanctuary. Successful applicants, most of whom were over 25 years old, live across England, Scotland, Wales and Northern Ireland with the greatest number from Greater London (39), followed by the South West (37), Northern Ireland (21), and the North East (21). There were 10 awards to applicants living in Scotland and 2 in Wales.

## AWARDS & COURSES

***"Financially, the assistance relieved a significant burden. And knowing that an organisation like the Ruth Hayman Trust was willing to invest in my education boosted my morale and my determination to persevere through the exam process."***

(Psychiatrist from Turkey, awarded £1,171 for the Clinical Assessment of Skills and Competencies (CASC) examination fee required to work in the UK as a psychiatrist.)

During 2023-24, we received 568 applications for support compared to 481 in the previous year. We awarded 183 grants worth £104,617 (adjusted in the accounts to £67,211 to take account of previous unpaid grants) compared to the record 207 awards last year. Thanks to our generous supporters and our successful Big Give campaign, we were able to maintain our maximum grant at £1,500. With your on-going support, we hope we can continue this level in the future.

This year we awarded more grants to asylum seekers on ESOL courses than in the previous year (39 compared to 11). This was mainly due to applications from a college in the South West where asylum seekers are not funded for ESOL as they are in some other areas such as London and Manchester. We also supported 21 applicants to take the IELTS or OET English examinations, required for overseas doctors and nurses to practise here or for university entrance.

We continued to support many students on vocational courses, especially leading to work in health and social care. We supported 18 applicants on a range of medical and health courses leading to work as doctors, nurses, phlebotomists, dentists and care workers. We also supported 7 doctors with fees for the PLAB exams required to work in the U.K. We awarded grants for a broad range of other vocational courses, qualifications and licences including interpreting, accounting, pharmacy, English language teaching, law, security, herbalism and beauty therapy.

All applications are carefully reviewed by our Grants Committee to check eligibility for our grants. Our top priority remains unchanged: to provide support for course, examination and registration fees, including membership of professional organisations. As with all other parts of the economy, inflation has had an effect on course fees, but this is also a reflection of the change in the types and levels of courses as learners are applying for more higher level courses with high fees. In many cases we were able to award the full amount requested, especially for English for Speakers of Other Languages (ESOL) and for asylum seekers. Asylum Seekers are not normally allowed to work and therefore lack the ability to fund any shortfall.

We made one Rose Grant Special Award of £500. This special award is given to applicants who show a strong commitment to the community or human rights as well as exceptional academic ability. It was awarded to an asylum seeker from Sri Lanka, aiming to work as a nurse in the U.K., for her volunteering work cooking for a range of community groups.

We also made one award for protective clothing required for a construction course to an asylum seeker from Iran, and 6 awards for essential course books.

In the field of higher education, where fees are very high, we have continued our policy of only awarding grants for courses with a clear vocational aim and to applicants who can provide evidence to show how they will find the rest of the money. Where the applicant still has a large proportion of money to find after our grant, we sometimes award a promise to pay the grant in the future once we are shown evidence that most of the money can be found.

Our grants are valid for 6 months and after that we require successful applicants to let us know the reason for an extension. We know applicants live complicated lives and can't always take part in the learning programme for which they applied. We continue to be flexible when extensions are requested, but are aware, unfortunately, that some grants still remain unused.

## DONATIONS & FUNDRAISING

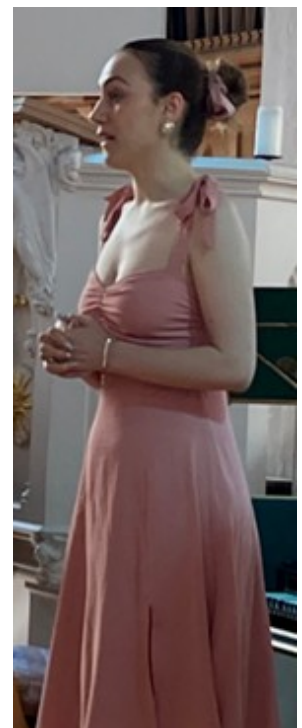
### Donations

We would like to thank all our donors, small and big, individuals, charities and trusts, without whom we wouldn't exist. We appreciate your continued support. Specifically, we'd like to thank the Blue Moon Trust, Ascentis, the Belpech Trust, the Ernest Hecht Charitable Fund, and the Good Gifts Catalogue.

### Musical evening

Many thanks to the baroque music group Fiori Musicali who generously donated the collection from their beautiful Highbury summer concert to the Trust. The group's founder, Penelope Rapson, is the daughter of a refugee who fled Czechoslovakia as a teenager at the start of WW2 and made a very successful career here as an aeronautical engineer. She wanted to support the Trust *"because I know from my own family what refugees can do when they get the chance."*

Sidorela, from Albania, spoke movingly at the Fiori Musicali concert in aid of the Trust about how grants from the Trust enabled her to gain confidence to help her study law and make a new life in the UK.





## The Big Give Christmas Challenge

This year our goal was to reach £30,000, a big increase from £20,000 the previous year, so we knew it would be challenging. In order to make the most of match-funding we needed to raise £15,000 in the Christmas Challenge week in December, which would then be matched by the Big Give and our own pledgers. Imagine our delight when we reached our target with a grand total of £30,040 not including Gift Aid. We're particularly grateful to the generous supporters who pledged and then paid the initial £7,500. Without their help, we wouldn't have been able to access the match-funding which allowed the doubling of other donations.

## Student Fundraising

We always encourage student fundraising and have received donations from projects like food sales held in ESOL classes. This year we had generous contributions from Newham Learning and Skills, Lewisham College, City and Islington College, and Manchester Adult Education Service.



*Manicure sessions by City and Islington students, in aid of the Ruth Hayman Trust*



*Lewisham College students proudly displaying certificates of thanks for raising £640.70 in the Christmas Challenge Week*



## NATECLA

Thank you to NATECLA members for your ongoing support. This year, at the National Conference in Birmingham, members donated £462 to the Trust through a raffle and sale of goods.

And thanks to trustee Jenny Wainman for devising the ever-popular Conference Quiz, with £500 kindly sponsored by National Open College Network.

## **FINANCE**

As demand for our grants increases, the need for fundraising continues. We're pleased to report that our running costs remain very low at £1,016, meaning that 99% of our expenditure went directly to support applicants. We're deeply indebted to our Patrons, Trustees, President, sponsors and volunteers for their contributions in work, money and kind.

At the Ruth Hayman Trust, our Reserve Policy is to hold funds between £20,000 and £25,000 in reserve for future grant awards. This amount would generally cover awards for one of the five grant-awarding meetings. As of 31 March 2024, the Trust held reserves of £35,616, somewhat above our policy, mainly owing to caution towards the end of year when, because of a temporary lack of Treasurer, our financial position lacked clarity.

Owing to the method by which our accounts are constructed, any grants, regardless of whether they are used or not, are considered "spent" for the 6 months they are valid and, only then, are unspent grants "recycled" into the income line. The Trustees are aware that our Reserves Policy requires reviewing in order to be more flexible, given the innate variability of our income.

We are deeply grateful to Anna Lancefield who examined our accounts.

## **MONITORING & QUALITY ASSURANCE**

The Trust requires applicants to show why they are unable to pay their fees or other costs themselves and to provide academic references showing the suitability of the course they're planning to attend. Grants are usually paid directly to the institution where the applicant wishes to study by bank transfer on production of an invoice. The only times we pay the applicant directly are for the Rose Grant Special Award, travel awards for disabled applicants, and where applicants can provide evidence that they have paid their fees since applying. Members of the Grants Committee spend considerable time checking application forms, ensuring that course details are correct, dealing with applicants' queries and revising grants where circumstances have changed. All applicants are asked to confirm that they have received the award and we also encourage them to let us know how they have progressed.

The Trust is aware that in some cases our awards are not used. As we mentioned above, we encourage applicants to contact us about any issues that might prevent their using our grant and we try to be as flexible as possible in finding solutions.

## TRUSTEES, PRESIDENT, PATRONS & VOLUNTEERS

**Trustees:** Sue Colquhoun, Sue De Cesare (from January 2024) Natasha Hayman (Vice Chair), Steve Hewitt (Chair), Caroline Hogarth, Jane Hoyle (from January 2024) Sham Kyriakakis (until July 2024) Naima Mohamed, Judith Nicholson (until July 2024), Hanna Ostling, Gomathi Panchapagesan, Sally Staples (Secretary), Mary Simpson, Jenny Wainman, Frances Weinreich, Jane Wilson.

Thank you to Stephanie Jones, who resigned as Treasurer in 2022, for all her excellent work over 4 years. Her shoes will be difficult to fill, but we're trying.

Thank you also to Judith Nicholson and Sham Kyriakakis who will be greatly missed for their work as Trustees. We're delighted to welcome Jane Hoyle and Sue De Cesare as new Trustees.

**President:** Sheila Rosenberg OBE

**Patrons:** We're most grateful to our supportive patrons, Rukhsana Ahmad, Hilary Blume DBE, Lord Alf Dubs, Lord Peter Hain, Sir Jeremy Isaacs, Tom Jupp OBE, Sue MacGregor CBE, the Hon. Adrienne Marks, Lord Bhikhu Parekh and Janet Suzman DBE.

**Volunteers** help us in many ways. Special thanks to Leonard Weinreich for designing Trust communications. And to John Cooper, who has continued to work to improve our online application system making a huge difference to the smooth running of the application process. Thank you also to Holly Dolan-Shakeri for her help with the accounts and to Victoria Robinson who designed Trust publicity and produced beautiful cards which were sold in aid of the Trust during Big Give Week.

## IMPACT ASSESSMENT

How much do our awards help beneficiaries change their lives for the better? We ask all successful applicants to acknowledge receipt of awards and explain how our awards have helped. We also receive letters and email messages describing the difference an award has made to their lives like the examples below:

***"I'm incredibly grateful for this grant, exactly what I needed to get started working in clinics again. I was feeling really down about being away from my career so it's a huge boost. I want to become a dentist again and I need to start somewhere. Studying and passing the ORE exam (required to work as a dentist in the UK) is my long-term goal. This course allows me to work and study at the same time, exactly what I need. Now I can be independent and it wouldn't be possible without your help."***

(M, female dentist, from Afghanistan, awarded £1,000 for a dental nursing course)

***"This grant really motivates me. It was so encouraging and helpful. I can't thank the people who gave the money enough. When I'm working here as a nurse, I would like to help people in my position now. I will certainly support this charity."***

(R from Sudan was a nurse in her own country. She was awarded £800 for an OSC course, a practical test of clinical skills and bedside manner, that will help her to find work in the U.K.)

When applicants re-apply for a further course, achievements on previous courses are checked to see whether they show progress. Furthermore, we receive letters from college tutors and student advisers recording the value of our awards.



## CONTRIBUTION TO PUBLIC BENEFIT

The Ruth Hayman Trust enables individuals with a first language other than English and inadequate financial means to study, gain skills and qualifications which ease their integration into U.K. life. In this way, they are enabled to contribute to both the U.K. economy and society. The Trust therefore advances equality of opportunity for people from diverse cultures and backgrounds and contributes to social cohesion.

The Trustees confirm they have complied with the public duty to have due regard to the guidance from the Charity Commission regarding public benefit.

## CHAIR'S MESSAGE

In these difficult times for all of us, it is heartening to see the generosity of our donors continue.

Whilst we were very grateful to receive some large donations from other trusts, every single donation, however small or large, is equally important and equally appreciated.

Without this generosity we would be unable to continue our work and support so many brilliant applicants, several of whose stories you can read above.

In particular, the fundraising during the Big Give Christmas Challenge where we smashed through our largest ever target was key to us reaching over £100,000 in donations for the first time.

However, the grants group still have the unenviable task of distributing this to our applicants and we're still unable fully to meet every applicant's request for funding.

So, we'll be redoubling our efforts in the coming year and looking for new ways to help you help us to raise as much money as possible as well as developing a longer term strategy for the Trust.

I must thank my fellow trustees for the tireless work they put in to keep the Trust running day-to-day, as an entirely volunteer-run organisation, we wouldn't exist without their hard work.

**Steve Hewitt**

**Chair**





Ruth Hayman Trust

*Providing educational grants to adults who have come to settle in the UK and whose first language is not English*

## **Report of the Trustees and Unaudited Financial Statements**

For the year ended 31 March 2024

*Charity number: 287268*





# Ruth Hayman Trust

*Providing educational grants to adults who have come to settle in the UK and whose first language is not English*

## Contents

Report of the Trustees	3
Independent Examiner's Report to the Trustees	4
Statement of Financial Activities	5
Statement of Financial Position	6
Notes to the Financial Statements	7-10
Detailed Statement of Financial Activities	11



## Report of the Trustees

For the year ended 31 March 2024

The Trustees have pleasure in presenting their report and the financial statements for the charity for the year ended 31 March 2024. The Trustees have adopted the provisions of Accounting and Reporting by Charities: Statement of Recommended Practice applicable to charities preparing their accounts in accordance with the Financial Reporting Standard applicable in the UK and the Republic of Ireland (FRS102) (effective 1 January 2015).

### Objectives and activities

The objective of the trust is to provide educational grants to adults who have come to settle in the UK and whose first language is not English.

### Reference and administrative information

Name of Charity	The Ruth Hayman Trust
Charity registration number	287268
Trustees	<p>The Trustees and officers serving during the year and since the year end were as follows:</p> <p>Sue Colquhoun Sue De Cesare (from January 2024) Natasha Hayman (Vice Chair) Steve Hewitt (Chair) Caroline Hogarth Jane Hoyle (from January 2024) Sham Kyriakakis (until July 2024) Naima Mohamed Judith Nicholson (until July 2024) Hanna Ostling Gomathi Panchapagesan Sally Staples (Secretary) Mary Simpson Jenny Wainman Frances Weinreich Jane Wilson</p>
Independent examiners	Anna Lancefield

Approved by the Board of Trustees and signed on its behalf by

S Hewitt (Chair of Trustees)

27/11/2024



## **Independent Examiners Report to the Trustees**

For the year ended 31 March 2024

I report to the Trustees on my examination of the accounts of the charity for the year ended 31 March 2024.

### **Responsibilities and basis of report**

As the charity trustees, you are responsible for the preparation of the accounts in accordance with the requirements of the Charities Act 2011 (“the 2011 Act”).

I report in respect of my examination of the charity’s accounts carried out under section 145 of the 2011 Act and in carrying out my examination I have followed all the applicable Directions given by the Charity Commission under section 145(5)(b) of the Act.

### **Independent examiners statement**

I have completed my examination. I confirm that no matters have come to my attention in connection with the examination giving me cause to believe that in any material respect:

1. Accounting records were not kept in respect of the Charity as required by section 130 if the 2011 Act; or
2. The accounts do not accord with those records; or
3. The accounts do not comply with the applicable requirements concerning the form and content of accounts set out in the Charities (Accounts and Reports) Regulations 2008 other than any requirements that the accounts give a ‘true and fair view’ which is not a matter considered as part of an independent examination

I have no concerns and have come across no other matters in connection with the examination to which attention should be drawn in this report in order to enable a proper understanding of the accounts to be reached.

Anna Lancefield  
3 Belle Vue Road, Herne Bay, Kent CT6 6BX



## Statement of Financial Activities

For the year ended 31 March 2024

	Notes	Unrestricted funds £	Restricted funds £	2024 £	2023 £
<b>Income from:</b>					
Donations	2	63,367	36,384	99,752	66,761
Other activities	3	<u>638</u>	<u>0</u>	<u>638</u>	<u>1,264</u>
<b>Total</b>		<u>64,005</u>	<u>36,384</u>	<u>100,390</u>	<u>68,025</u>
<b>Expenditure on:</b>					
Grants	4	30,041	37,170	67,211	125,998
Support costs	5	<u>1,016</u>	<u>0</u>	<u>1,016</u>	<u>1,482</u>
<b>Total</b>		<u>31,056</u>	<u>37,170</u>	<u>68,226</u>	<u>127,480</u>
<b>Net income/ (expenditure)</b>		<b>32,949</b>	<b>-786</b>	<b>32,163</b>	<b>-59,455</b>
<b>Reconciliation of funds</b>					
Total funds brought forward		<u>-13,036</u>	<u>16,914</u>	<u>3,453</u>	<u>62,908</u>
Total funds carried forward		<u><b>19,913</b></u>	<u><b>16,128</b></u>	<u><b>35,616</b></u>	<u><b>3,453</b></u>





## Statement of Financial Position

As at 31 March 2024

	Notes	2024	2023
		£	£
<b>Current Assets</b>			
Cash at bank and in hand		35,616	3,453
		<u>35,616</u>	<u>3,453</u>
<b>Net current assets</b>			
		<b>35,616</b>	<b>3,453</b>
<b>Total assets less current liabilities</b>			
		35,616	3,453
<b>Net assets</b>			
		<u>35,616</u>	<u>3,453</u>
<b>The funds of the charity</b>			
Restricted income funds	7	16,128	16,914
Unrestricted income funds	7	19,488	-13,461
<b>Total funds</b>		<u>35,616</u>	<u>3,453</u>

The financial statements were approved and authorised by the Board of Trustees and signed on its behalf by:

.....  
S Hewitt (Chair of Trustees)  
27/11/2024



## Notes to the Financial Statements

For the year ended 31 March 2024

### 1. Accounting Policies

#### Basis of accounting

The financial statement have been prepared under the historical cost convention, except for investments which are included at market value and the revaluation of certain fixed assets and in accordance with the Charities SROP (FRS 102) 'Accounting and Reporting by Charities: Statement of Recommended Practice' applicable to charities preparing their accounts in accordance with the Financial Reporting Standard applicable in the UK and Republic of Ireland (FRS 102), and the Charities Act 2011.

The Ruth Hayman Trust meets the definition of a public benefit entity under FRS 102. Assets and liabilities are initially recognised at historical cost or transaction value unless otherwise stated in the relevant accounting policy note(s).

### 2. Income from donations

	<b>Unrestricted funds</b>	<b>Restricted funds</b>	<b>2024</b>	<b>2023</b>
	£	£	£	£
Donations received	55,915	36,384	92,299	61,452
Gift Aid	7,453	0	7,453	5,308
	<u>63,367</u>	<u>36,384</u>	<u>99,752</u>	<u>66,761</u>

#### The income from donations is made up as follows:

Regular donors	7,930	7,900
Other unrestricted donations from individuals	9,085	15,994
Other restricted donations from individuals	0	0
Big Give (restricted)	30,376	24,233
Literary event	0	1,098
Student fundraising	0	411
Unrestricted donations from organisations	38,900	10,025
Restricted donations from organisations	6,008	1,790
	<u>92,229</u>	<u>61,452</u>



### 3. Income earned from other activities

	2024	2023
	£	£
<b>Unrestricted funds</b>		
Sales at NATECLA events	462	922
Fundraising via Amazon Smile	19	11
Fundraising via give as you live	63	248
Interest	94	84
	<u>638</u>	<u>1,264</u>

### 4. Expenditure on grants

	Unrestricted funds	Restricted funds	2024	2023
	£	£	£	£
Grant awards	30,041	37,170	67,211	125,222
Book token awards		0	0	776
	<u>30,041</u>	<u>37,170</u>	<u>67,211</u>	<u>125,998</u>

#### The grant awards are made up as follows:

Funds awarded in current year	104,617	159,034
Funds awarded in prior year and now invalid	<u>-37,406</u>	<u>-33,812</u>
	<u>67,211</u>	<u>125,222</u>

### 5. Analysis of support costs

	2024	2023
	£	£
CAF donate fees	131	174
CAF account fees	60	72
Other administrative costs	824	1,236
	<u>1,016</u>	<u>1,482</u>



## 6. Movement in funds

	Balance at 01/04/2023 £	Incoming resources £	Outgoing resources £	Balance at 31/03/24 £
<b>Current year</b>				
<b>Unrestricted Funds</b>				
General	-13,461	64,005	31,056	19,488
	<u>-13,461</u>	<u>64,005</u>	<u>31,056</u>	<u>19,488</u>
<b>Restricted funds</b>				
Hilden Trust	1,401	0	0	1,401
Good Gifts Catalogue	771	6,008	5,095	1,684
Jane Shackman	350	0	0	350
Big Give 2020	1,000	0	0	1,000
Big Give 2021	369	0	369	0
Big Give 2022	11,925	0	11,925	0
Big Give 2023	0	30,376	19,781	10,596
Literary event	1,098		0	1,098
	<u>16,914</u>	<u>36,384</u>	<u>37,170</u>	<u>16,128</u>
<b>Previous year</b>				
<b>Unrestricted funds</b>				
General	56,322	40,904	110,687	-13,461
	<u>56,322</u>	<u>40,904</u>	<u>110,687</u>	<u>-13,461</u>
<b>Restricted funds</b>				
Hilden Trust	1,561	0	160	1,401
Good Gifts Catalogue	4,556	1,790	5,575	771
Jane Shackman	0	0	-350	350
Big Give 2020	0	0	-1,000	1,000
Big Give 2021	469	0	100	369
Big Give 2022	0	24,233	12,308	11,925
Literary event	0	1,098	0	1,098
	<u>6,586</u>	<u>27,121</u>	<u>16,793</u>	<u>16,914</u>





## 7. Analysis of net assets between funds

	Net current assets/ (liabilities) £	Net assets £
<b>Current year</b>		
Unrestricted funds	19,913	19,913
Restricted funds	16,128	16,128
	<u>36,041</u>	<u>36,041</u>
<b>Previous year</b>		
Unrestricted funds	-13,461	-13,461
Restricted funds	16,914	16,914
	<u>3,453</u>	<u>3,453</u>



## Detailed Statement of Financial Activities\*

For the year ended 31 March 2024

	<b>2024</b>	<b>2023</b>
	<b>£</b>	<b>£</b>
<b>Income from donations</b>		
Donations	92,299	61,452
Gift Aid	7,453	5,308
	<u><b>99,752</b></u>	<u><b>66,761</b></u>
<b>Income from other activities</b>		
Events	462	922
Fundraising via give as you live and Amazon smile	82	259
Interest	94	84
	<u><b>638</b></u>	<u><b>1,264</b></u>
<b>Total incoming resources</b>	<u><b>100,390</b></u>	<u><b>68,025</b></u>
<b>Expenditure on grants</b>		
Grant awards	-67,211	-125,222
Book token awards	0	-776
	<u><b>-67,211</b></u>	<u><b>-125,998</b></u>
<b>Expenditure on support costs</b>		
Virgin Giving/ CAF Donate fees	-131	-174
CAF account fees	-60	-72
Other administrative costs	-824	-1,236
	<u><b>-1,016</b></u>	<u><b>-1,482</b></u>
<b>Total resources expended</b>	<u><b>-68,226</b></u>	<u><b>-127,480</b></u>
<b>Net income</b>	<u><b>32,163</b></u>	<u><b>-59,455</b></u>

\* This page does not form part of the statutory financial statements



Ruth Hayman Trust

*Providing educational grants to adults who have come to settle in the UK and whose first language is not English*

## **Report of the Trustees and Unaudited Financial Statements**

For the year ended 31 March 2024

*Charity number: 287268*



# Ruth Hayman Trust

*Providing educational grants to adults who have come to settle in the UK and whose first language is not English*

## Contents

Report of the Trustees	3
Independent Examiner's Report to the Trustees	4
Statement of Financial Activities	5
Statement of Financial Position	6
Notes to the Financial Statements	7-10
Detailed Statement of Financial Activities	11





## Report of the Trustees

For the year ended 31 March 2024

The Trustees have pleasure in presenting their report and the financial statements for the charity for the year ended 31 March 2024. The Trustees have adopted the provisions of Accounting and Reporting by Charities: Statement of Recommended Practice applicable to charities preparing their accounts in accordance with the Financial Reporting Standard applicable in the UK and the Republic of Ireland (FRS102) (effective 1 January 2015).

### Objectives and activities

The objective of the trust is to provide educational grants to adults who have come to settle in the UK and whose first language is not English.

### Reference and administrative information

Name of Charity	The Ruth Hayman Trust
Charity registration number	287268
Trustees	<p>The Trustees and officers serving during the year and since the year end were as follows:</p> <p>Sue Colquhoun Sue De Cesare (from January 2024) Natasha Hayman (Vice Chair) Steve Hewitt (Chair) Caroline Hogarth Jane Hoyle (from January 2024) Sham Kyriakakis (until July 2024) Naima Mohamed Judith Nicholson (until July 2024) Hanna Ostling Gomathi Panchapagesan Sally Staples (Secretary) Mary Simpson Jenny Wainman Frances Weinreich Jane Wilson</p>
Independent examiners	Anna Lancefield

Approved by the Board of Trustees and signed on its behalf by

S Hewitt (Chair of Trustees)

27/11/2024



## **Independent Examiners Report to the Trustees**

For the year ended 31 March 2024

I report to the Trustees on my examination of the accounts of the charity for the year ended 31 March 2024.

### **Responsibilities and basis of report**

As the charity trustees, you are responsible for the preparation of the accounts in accordance with the requirements of the Charities Act 2011 (“the 2011 Act”).

I report in respect of my examination of the charity’s accounts carried out under section 145 of the 2011 Act and in carrying out my examination I have followed all the applicable Directions given by the Charity Commission under section 145(5)(b) of the Act.

### **Independent examiners statement**

I have completed my examination. I confirm that no matters have come to my attention in connection with the examination giving me cause to believe that in any material respect:

1. Accounting records were not kept in respect of the Charity as required by section 130 if the 2011 Act; or
2. The accounts do not accord with those records; or
3. The accounts do not comply with the applicable requirements concerning the form and content of accounts set out in the Charities (Accounts and Reports) Regulations 2008 other than any requirements that the accounts give a ‘true and fair view’ which is not a matter considered as part of an independent examination

I have no concerns and have come across no other matters in connection with the examination to which attention should be drawn in this report in order to enable a proper understanding of the accounts to be reached.

Anna Lancefield  
3 Belle Vue Road, Herne Bay, Kent CT6 6BX



## Statement of Financial Activities

For the year ended 31 March 2024

	Notes	Unrestricted funds £	Restricted funds £	2024 £	2023 £
<b>Income from:</b>					
Donations	2	63,367	36,384	99,752	66,761
Other activities	3	<u>638</u>	<u>0</u>	<u>638</u>	<u>1,264</u>
<b>Total</b>		<u>64,005</u>	<u>36,384</u>	<u>100,390</u>	<u>68,025</u>
<b>Expenditure on:</b>					
Grants	4	30,041	37,170	67,211	125,998
Support costs	5	<u>1,016</u>	<u>0</u>	<u>1,016</u>	<u>1,482</u>
<b>Total</b>		<u>31,056</u>	<u>37,170</u>	<u>68,226</u>	<u>127,480</u>
<b>Net income/ (expenditure)</b>		<b>32,949</b>	<b>-786</b>	<b>32,163</b>	<b>-59,455</b>
<b>Reconciliation of funds</b>					
Total funds brought forward		<u>-13,036</u>	<u>16,914</u>	<u>3,453</u>	<u>62,908</u>
Total funds carried forward		<u><b>19,913</b></u>	<u><b>16,128</b></u>	<u><b>35,616</b></u>	<u><b>3,453</b></u>



# Ruth Hayman Trust

Providing educational grants to adults who have come to settle in the UK and whose first language is not English

## Statement of Financial Position

As at 31 March 2024

	Notes	2024 £	2023 £
<b>Current Assets</b>			
Cash at bank and in hand		35,616	3,453
		<u>35,616</u>	<u>3,453</u>
<b>Net current assets</b>		<b>35,616</b>	<b>3,453</b>
<b>Total assets less current liabilities</b>		35,616	3,453
<b>Net assets</b>		<u>35,616</u>	<u>3,453</u>
<b>The funds of the charity</b>			
Restricted income funds	7	16,128	16,914
Unrestricted income funds	7	19,488	-13,461
<b>Total funds</b>		<u>35,616</u>	<u>3,453</u>

The financial statements were approved and authorised by the Board of Trustees and signed on its behalf by:

.....  
S Hewitt (Chair of Trustees)  
27/11/2024



## Notes to the Financial Statements

For the year ended 31 March 2024

### 1. Accounting Policies

#### Basis of accounting

The financial statement have been prepared under the historical cost convention, except for investments which are included at market value and the revaluation of certain fixed assets and in accordance with the Charities SROP (FRS 102) 'Accounting and Reporting by Charities: Statement of Recommended Practice' applicable to charities preparing their accounts in accordance with the Financial Reporting Standard applicable in the UK and Republic of Ireland (FRS 102), and the Charities Act 2011.

The Ruth Hayman Trust meets the definition of a public benefit entity under FRS 102. Assets and liabilities are initially recognised at historical cost or transaction value unless otherwise stated in the relevant accounting policy note(s).

### 2. Income from donations

	<b>Unrestricted funds</b>	<b>Restricted funds</b>	<b>2024</b>	<b>2023</b>
	£	£	£	£
Donations received	55,915	36,384	92,299	61,452
Gift Aid	7,453	0	7,453	5,308
	<u>63,367</u>	<u>36,384</u>	<u>99,752</u>	<u>66,761</u>

#### The income from donations is made up as follows:

Regular donors	7,930	7,900
Other unrestricted donations from individuals	9,085	15,994
Other restricted donations from individuals	0	0
Big Give (restricted)	30,376	24,233
Literary event	0	1,098
Student fundraising	0	411
Unrestricted donations from organisations	38,900	10,025
Restricted donations from organisations	6,008	1,790
	<u>92,229</u>	<u>61,452</u>



### 3. Income earned from other activities

	2024	2023
	£	£
<b>Unrestricted funds</b>		
Sales at NATECLA events	462	922
Fundraising via Amazon Smile	19	11
Fundraising via give as you live	63	248
Interest	94	84
	<u>638</u>	<u>1,264</u>

### 4. Expenditure on grants

	Unrestricted funds	Restricted funds	2024	2023
	£	£	£	£
Grant awards	30,041	37,170	67,211	125,222
Book token awards		0	0	776
	<u>30,041</u>	<u>37,170</u>	<u>67,211</u>	<u>125,998</u>

#### The grant awards are made up as follows:

Funds awarded in current year	104,617	159,034
Funds awarded in prior year and now invalid	<u>-37,406</u>	<u>-33,812</u>
	<u>67,211</u>	<u>125,222</u>

### 5. Analysis of support costs

	2024	2023
	£	£
CAF donate fees	131	174
CAF account fees	60	72
Other administrative costs	824	1,236
	<u>1,016</u>	<u>1,482</u>



## 6. Movement in funds

	Balance at 01/04/2023 £	Incoming resources £	Outgoing resources £	Balance at 31/03/24 £
<b>Current year</b>				
<b>Unrestricted Funds</b>				
General	-13,461	64,005	31,056	19,488
	<u>-13,461</u>	<u>64,005</u>	<u>31,056</u>	<u>19,488</u>
<b>Restricted funds</b>				
Hilden Trust	1,401	0	0	1,401
Good Gifts Catalogue	771	6,008	5,095	1,684
Jane Shackman	350	0	0	350
Big Give 2020	1,000	0	0	1,000
Big Give 2021	369	0	369	0
Big Give 2022	11,925	0	11,925	0
Big Give 2023	0	30,376	19,781	10,596
Literary event	1,098		0	1,098
	<u>16,914</u>	<u>36,384</u>	<u>37,170</u>	<u>16,128</u>
<b>Previous year</b>				
<b>Unrestricted funds</b>				
General	56,322	40,904	110,687	-13,461
	<u>56,322</u>	<u>40,904</u>	<u>110,687</u>	<u>-13,461</u>
<b>Restricted funds</b>				
Hilden Trust	1,561	0	160	1,401
Good Gifts Catalogue	4,556	1,790	5,575	771
Jane Shackman	0	0	-350	350
Big Give 2020	0	0	-1,000	1,000
Big Give 2021	469	0	100	369
Big Give 2022	0	24,233	12,308	11,925
Literary event	0	1,098	0	1,098
	<u>6,586</u>	<u>27,121</u>	<u>16,793</u>	<u>16,914</u>





## 7. Analysis of net assets between funds

	Net current assets/ (liabilities) £	Net assets £
<b>Current year</b>		
Unrestricted funds	19,913	19,913
Restricted funds	16,128	16,128
	<u>36,041</u>	<u>36,041</u>
<b>Previous year</b>		
Unrestricted funds	-13,461	-13,461
Restricted funds	16,914	16,914
	<u>3,453</u>	<u>3,453</u>



## Detailed Statement of Financial Activities\*

For the year ended 31 March 2024

	<b>2024</b>	<b>2023</b>
	<b>£</b>	<b>£</b>
<b>Income from donations</b>		
Donations	92,299	61,452
Gift Aid	7,453	5,308
	<u><b>99,752</b></u>	<u><b>66,761</b></u>
<b>Income from other activities</b>		
Events	462	922
Fundraising via give as you live and Amazon smile	82	259
Interest	94	84
	<u><b>638</b></u>	<u><b>1,264</b></u>
<b>Total incoming resources</b>	<u><b>100,390</b></u>	<u><b>68,025</b></u>
<b>Expenditure on grants</b>		
Grant awards	-67,211	-125,222
Book token awards	0	-776
	<u><b>-67,211</b></u>	<u><b>-125,998</b></u>
<b>Expenditure on support costs</b>		
Virgin Giving/ CAF Donate fees	-131	-174
CAF account fees	-60	-72
Other administrative costs	-824	-1,236
	<u><b>-1,016</b></u>	<u><b>-1,482</b></u>
<b>Total resources expended</b>	<u><b>-68,226</b></u>	<u><b>-127,480</b></u>
<b>Net income</b>	<u><b>32,163</b></u>	<u><b>-59,455</b></u>

\* This page does not form part of the statutory financial statements